



# 25th IHF Women's Junior World Championship 2026



Preliminary Round - Group C, 2. round

Match Team Statistics  
Match No. 29

**Canada 11 - 46 Germany**  
(7 - 22) (4 - 24)

25.6.2026. 16:15  
Attendance: 390  
Zhongdu Campus  
Gymnasium

Referees: Ahmad Gheisarian (IRI) / Amir Gheisarian (IRI)

## Canada

#	Surname and name	S	Goals / shots								Attack					Def.			Penalties			TP					
			Tot.	%	9m	6m	Wing	7m	FB	Brk.	LD	As.	PC	E7	E2	TF	St.	C7	Blk	YC	2m		R	B			
4	REID Maxim	S	1/1	100				1/1																			24:37
5	CHAGNON Ophély	S													2												35:12
6	RENY Annabelle		0/1	0				0/1																			18:04
7	LECLAIR Amélie	S	0/2	0	0/1			0/1							3	1											30:59
8	BLAIS Doriane		0/1	0				0/1							1												18:58
9	LANDRY Gabrielle		1/1	100		1/1									2												12:54
13	BOULY Aurélie																										14:13
14	BOISCLAIR Florence	S	2/10	20	1/8			0/1		1/1					10												35:49
16	FLORESCU Alice																										13:11
19	HALUS-UDREA Clara Maria		0/2	0	0/2										2												17:04
21	ENGLISH Halyn		0/1	0				0/1							3												19:51
22	LEMAIRE Mahély	S	4/14	29	3/13			1/1						2	2	1		3									39:25
26	FOURNIER Chloé	S												1		1		1		1							36:32
33	ROY Roselyne	S														1											28:33
36	BOTAREL Petra-Sinziana		1/7	14	1/7									1				2									39:33
37	VRDOLJAK Katarina		2/2	100		2/2									1		1		1								35:05
	Team / bench																										
	<b>TOTAL</b>		11/42	26	5/31	3/3	1/4	1/3	0/0	1/1	0/0			4	3	3	1	30	2	2	1	0	5	0	0		

#	Surname and name	Saves / shots								
		Tot.	%	9m	6m	Wing	7m	FB	Brk.	LD
13	BOULY Aurélie	2/12	17	0/2	0/1	0/5		1/3	1/1	
16	FLORESCU Alice	4/17	24	1/3	0/1	0/1	0/1	2/9	1/2	
33	ROY Roselyne	7/29	24	2/6	2/7	2/4	0/1	0/5	1/6	
	<b>TOTAL</b>	13/58	22	3/11	2/9	2/10	0/2	3/17	3/9	0/0

Coach: **Stephane Berteau**

Number of attacks: 70, Efficiency: 16%, Average Duration: 35.27 seconds

### Attack by type of defense

	Shots	9m	6m	Wing	TF	E7	E2
On def. 6-0	10/39	5/31	3/3	1/4	30	3	1
Fastbreak	0/0				0	0	0

### Defense by type

	Total	9m	6m	Wing	Stl.	C7	2m
Def. 6-0	29/42	8/12	7/10	8/11	2	2	0
Fastbreak	15/20				0	0	5

### Attack with superiority / minority / goalkeeper out

	Attack				Reaction		
	Att.	Eff.	Shots	TF	FB	LD	Tot.
7 on 6 (GK out)	3	33%	1/1	2	0/0	0/0	0/0
6 on 6 (GK out)	6	0%	0/6	0	2/2	0/0	2/2
5 on 6 (GK out)	1	0%	0/0	1	0/0	0/0	0/0
6 on 6	58	16%	9/31	27			
6 on 5	2	50%	1/2	0			

Player superiority / GK out counted at the end of attack (in case it changes during attack)

### Defense with superiority / minority / goalkeeper out

	Attack				Reaction		
	Att.	Eff.	Shots	TF	FB	LD	Tot.
6 on 6 (GK out)	1	0%	0/0	1	0/0	0/0	0/0
6 on 6	59	66%	39/53	6			
6 on 5	9	67%	6/8	1			
6 on 4	1	100%	1/1	0			

Numbers show attacking numbers of opponent. Lower efficiency of opponent means better defense of this team

# Jersey number Tot. Total shooting 6m 6m (line) shooting 9m 9m shooting Wng Wing shooting FB Fastbreak sh. 7m 7m penalty sh.  
Brk. Breakthrough sh. LD Long distance sh. As. Assists PC Pass clear chance E7 Earned 7m pen. TF Technical faults St. Steals  
2m 2m punishments C7. Committed 7m E2 Earned 2m pun. YC. Yellow cards R/B Red/Blue cards Blk. Blocks S Starting Line-up

Handball statistics and livescore by Toma-soft ltd (www.toma-soft.hr)



# 25th IHF Women's Junior World Championship 2026



Preliminary Round - Group C, 2. round

## Match Team Statistics

Match No. 29

## Canada 11 - 46 Germany

(7 - 22) (4 - 24)

25.6.2026. 16:15

Attendance: 390

Zhongdu Campus

Gymnasium

Referees: Ahmad Gheisarian (IRI) / Amir Gheisarian (IRI)

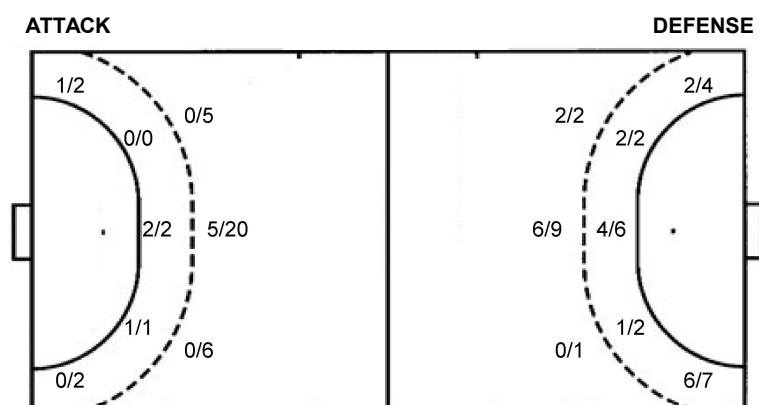
### Shot distribution by player

<b>4 M. Reid</b> 1/1	<b>5 O. Chagnon</b>	<b>6 A. Reny</b> 0/1	<b>7 A. Leclair</b> 0/1 0/1	<b>8 D. Blais</b> 0/1	<b>9 G. Landry</b> 1/1	<b>14 F. Boisclair</b> 1/2 0/2 1/4 0/1 1 miss.
<b>19 C. Halus-Udrea</b> 2 block	<b>21 H. English</b> 0/1	<b>22 M. Lemaire</b> 0/1 1/1 0/1 1/1 2/2 2 post 3 miss. 3 block	<b>26 C. Fournier</b>	<b>36 P. Botarel</b> 0/1 1/1 0/2 1 miss. 2 block	<b>37 K. Vrdoljak</b> 1/1 1/1	<b>TOTAL</b> 0/1 2/3 0/3 0/1 1/1 4/8 2/8 2/3 2 post 5 miss. 7 block

### Saves distribution goalkeepers

<b>13 A. Bouly</b> 1/5 0/1 0/1 0/1 0/2 1/1 0/1	<b>16 A. Florescu</b> 0/1 0/1 0/2 2/4 2/4 0/3 0/2	<b>33 R. Roy</b> 1/1 1/1 1/4 1/4 2/5 0/8 1/2 0/3	<b>TOTAL</b> 2/7 1/2 1/7 3/9 4/10 0/13 2/3 0/6
---	--	---	---

### Shots by position



### Shooting statistics

Position	Goals	Sav.	Miss.	Post	Blk.	Total	%
Back (9m)	5	12	5	2	7	31	16
Line (6m)	3	0	0	0	0	3	100
Wing	1	3	0	0	0	4	25
7m penalties	1	2	0	0	0	3	33
Fastbreak	0	0	0	0	0	0	0
Breakthrough	1	0	0	0	0	1	100
<b>Total</b>	<b>11</b>	<b>17</b>	<b>5</b>	<b>2</b>	<b>7</b>	<b>42</b>	<b>26</b>

7m penalties 1/3  
Fastbreak 0/0  
Breakthrough 1/1  
Long dist. 0/0

7m penalties 2/2  
Fastbreak 15/20  
Breakthrough 6/9  
Long dist. 0/0

# Jersey number Tot. Total shooting 6m 6m (line) shooting 9m 9m shooting Wng Wing shooting FB Fastbreak sh. 7m 7m penalty sh.  
Brk. Breakthrough sh. LD Long distance sh. As. Assists PC Pass clear chance E7 Earned 7m pen. TF Technical faults St. Steals  
2m 2m punishments C7. Committed 7m E2 Earned 2m pun. YC. Yellow cards R/B Red/Blue cards Blk. Blocks S Starting Line-up

Handball statistics and livescore by Toma-soft ltd (www.toma-soft.hr)



# 25th IHF Women's Junior World Championship 2026



Preliminary Round - Group C, 2. round

Match Team Statistics  
Match No. 29

**Canada 11 - 46 Germany**  
(7 - 22) (4 - 24)

25.6.2026. 16:15  
Attendance: 390  
Zhongdu Campus  
Gymnasium

Referees: Ahmad Gheisarian (IRI) / Amir Gheisarian (IRI)

## Germany

#	Surname and name	S	Goals / shots								Attack					Def.			Penalties				TP							
			Tot.	%	9m	6m	Wing	7m	FB	Brk.	LD	As.	PC	E7	E2	TF	St.	C7	Blk	YC	2m	R		B						
2	GUTZEIT Hannah	S	1/2	50						1/2					5	1		1	1	2										31:12
3	WALTHER Jana		5/5	100			5/5										1												29:56	
4	EGELING Lara	S	6/9	67		1/1	2/3		3/5					1						2									30:04	
5	NJINKEU Farrelle	S	6/8	75		0/1	1/2		5/5					1				1	1									30:02		
6	MITTAG Aida	S	1/2	50	0/1					1/1				3	1	1	1	1											28:09	
7	ROHR Chiara		4/6	67			0/1	1/1	1/2	2/2																			29:51	
8	LITVINOV Ruslana		2/3	67		1/1			1/1	0/1				2					3	1									20:52	
11	LAMMICH Lisa		0/1	0						0/1				2	1				1										14:52	
12	MUTH Merle-Sophie	S												6	3														58:59	
13	BORNHARDT Aylin	S	8/10	80		3/4		1/1	4/5					1			1	1		1	2								43:54	
14	KERN Marleen		2/2	100	2/2									2	1			1											24:06	
16	LINDEMANN Lena Marie																													
17	NIEMANN Emma		2/3	67	1/2					1/1				2	2		1		1	1	2		1						19:20	
18	KLOCKE Laura		3/5	60		2/3			1/2					1		1													16:07	
20	TUCHOLKE Marlene		3/4	75	2/3					1/1					1			1	1										16:44	
21	OTT Kim	S	3/4	75	3/4									2	1			2											25:52	
	Team / bench																													
	<b>TOTAL</b>		46/64	72	8/12	7/10	8/11	2/2	15/20	6/9	0/0			28	10	2	5	8	12	3	7	0	1	0	0					

#	Surname and name	Saves / shots								
		Tot.	%	9m	6m	Wing	7m	FB	Brk.	LD
12	MUTH Merle-Sophie	17/28	61	12/17	0/3	3/4	2/3		0/1	
16	LINDEMANN Lena Marie									
	<b>TOTAL</b>	17/28	61	12/17	0/3	3/4	2/3	3/0	0/1	0/0

Coach: **Christopher Nordmeyer**

Number of attacks: 70, Efficiency: 66%, Average Duration: 16.11 seconds

### Attack by type of defense

	Shots	9m	6m	Wing	TF	E7	E2
<b>On def. 6-0</b>	29/42	8/12	7/10	8/11	8	2	5
<b>Fastbreak</b>	15/20				0	0	0

### Defense by type

	Total	9m	6m	Wing	Stl.	C7	2m
<b>Def. 6-0</b>	10/39	5/31	3/3	1/4	12	3	0
<b>Fastbreak</b>	0/0				0	0	1

### Attack with superiority / minority / goalkeeper out

	Attack				Reaction		
	Att.	Eff.	Shots	TF	FB	LD	Tot.
<b>6 on 6 (GK out)</b>	1	0%	0/0	1	0/0	0/0	0/0
<b>6 on 6</b>	59	66%	39/53	6			
<b>6 on 5</b>	9	67%	6/8	1			
<b>6 on 4</b>	1	100%	1/1	0			

Player superiority / GK out counted at the end of attack (in case it changes during attack)

### Defense with superiority / minority / goalkeeper out

	Attack				Reaction		
	Att.	Eff.	Shots	TF	FB	LD	Tot.
<b>7 on 6 (GK out)</b>	3	33%	1/1	2	0/0	0/0	0/0
<b>6 on 6 (GK out)</b>	6	0%	0/6	0	2/2	0/0	2/2
<b>5 on 6 (GK out)</b>	1	0%	0/0	1	0/0	0/0	0/0
<b>6 on 6</b>	58	16%	9/31	27			
<b>6 on 5</b>	2	50%	1/2	0			

Numbers show attacking numbers of opponent. Lower efficiency of opponent means better defense of this team

# Jersey number Tot. Total shooting 6m 6m (line) shooting 9m 9m shooting Wng Wing shooting FB Fastbreak sh. 7m 7m penalty sh.  
Brk. Breakthrough sh. LD Long distance sh. As. Assists PC Pass clear chance E7 Earned 7m pen. TF Technical faults St. Steals  
2m 2m punishments C7. Committed 7m E2 Earned 2m pun. YC. Yellow cards R/B Red/Blue cards Blk. Blocks S Starting Line-up

Handball statistics and livescore by Toma-soft ltd (www.toma-soft.hr)



# 25th IHF Women's Junior World Championship 2026



Preliminary Round - Group C, 2. round

## Match Team Statistics

Match No. 29

## Canada 11 - 46 Germany

(7 - 22) (4 - 24)

25.6.2026. 16:15

Attendance: 390

Zhongdu Campus

Gymnasium

Referees: Ahmad Gheisarian (IRI) / Amir Gheisarian (IRI)

## Shot distribution by player

### 2 H. Gutzeit

1/1		
	0/1	

### 3 J. Walther

3/3		1/1
		1/1

### 4 L. Egeling

		1/1
1/2		1/3
2/2		1/1

### 5 F. Njinkeu

		1/1
2/3		
2/2		1/1

1 post

### 6 A. Mittag

1/1	0/1	

### 7 C. Rohr

0/1		1/2
		1/1
2/2		

### 8 R. Litvinov

0/1		1/1
		1/1

### 11 L. Lammich

		0/1

### 13 A. Bornhardt

		1/1
1/1		2/2
1/1	1/1	1/1

2 post 1/1 lob

### 14 M. Kern

1/1		1/1

### 17 E. Niemann

2/2		

1 block

### 18 L. Klocke

1/1		
		0/1
2/2		

1 post

### 20 M. Tucholke

1/1	1/1	
0/1		1/1

### 21 K. Ott

	0/1	
1/1		1/1
		1/1

## TOTAL

5/7	1/2	6/7
6/9		7/11
13/13	1/3	6/6

4 post 1 block 1/1 lob

## Saves distribution goalkeepers

### 12 M. Muth

	1/1	1/3
3/3	1/1	0/1
4/8	6/8	1/3

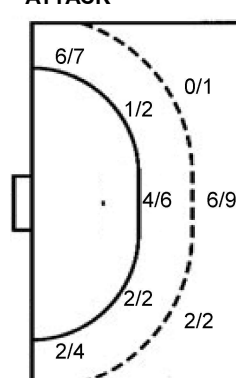
### 16 L. Lindemann


## TOTAL

	1/1	1/3
3/3	1/1	0/1
4/8	6/8	1/3

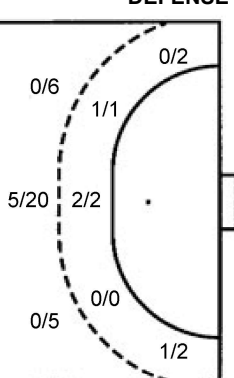
## Shots by position

### ATTACK



7m penalties 2/2  
Fastbreak 15/20  
Breakthrough 6/9  
Long dist. 0/0

### DEFENSE



7m penalties 1/3  
Fastbreak 0/0  
Breakthrough 1/1  
Long dist. 0/0

## Shooting statistics

Position	Goals	Sav.	Miss.	Post	Blk.	Total	%
Back (9m)	8	3	0	0	1	12	67
Line (6m)	7	2	0	1	0	10	70
Wing	8	2	0	1	0	11	73
7m penalties	2	0	0	0	0	2	100
Fastbreak	15	3	0	2	0	20	75
Breakthrough	6	3	0	0	0	9	67
<b>Total</b>	<b>46</b>	<b>13</b>	<b>0</b>	<b>4</b>	<b>1</b>	<b>64</b>	<b>72</b>

# Jersey number Tot. Total shooting 6m 6m (line) shooting 9m 9m shooting Wng Wing shooting FB Fastbreak sh. 7m 7m penalty sh.  
Brk. Breakthrough sh. LD Long distance sh. As. Assists PC Pass clear chance E7 Earned 7m pen. TF Technical faults St. Steals  
2m 2m punishments C7. Committed 7m E2 Earned 2m pun. YC. Yellow cards R/B Red/Blue cards Blk. Blocks S Starting Line-up

Handball statistics and livescore by Toma-soft ltd (www.toma-soft.hr)

