



25th IHF Women's Junior World Championship 2026



Preliminary Round - Group H, 2. round

Match Team Statistics

Match No. 23

Faroe Islands 23 - 22 Croatia

(14 - 11) (9 - 11)

25.6.2026. 16:15

Attendance: 120

Jinzhong University

Gymnasium

Referees: Raul Oyarzun Aylagas (ESP) / Aritz Zaragueta (ESP)

Shot distribution by player

2 R. Christiansen

3 H. Magnusardóttir

4 A. Jacobsen

7 J. Johannensen

1/1		1/1

8 R. Joensen

		1/3
2/2		3/3

1 miss. 1 block

9 R. Reginsdóttir

1/1		1/2
1/1		

1 post 1 block

10 S. Eystberg

1/2		1/1
2/2		1/1
1/1		

1 post 1 miss. 2 block

11 A. Djurhuus

13 K. Kjarbak

		1/1

1 post

15 M. Laursen

1/1		
		0/1

17 L. Ísfeld

1/1		

18 A. Hansen

1/1	0/1	

2/2 lob

19 E. Í Stórustovu

22 M. Jansdóttir

TOTAL

2/3		1/1
3/3		3/6
7/7	0/1	5/6

3 post 2 miss. 4 block 2/2 lob

Saves distribution goalkeepers

16 G. Á Neystabo

0/2		0/1
1/5	1/1	2/4
1/4	1/1	0/1

51 M. Beder

2/3		1/1
		1/3
2/5		0/2

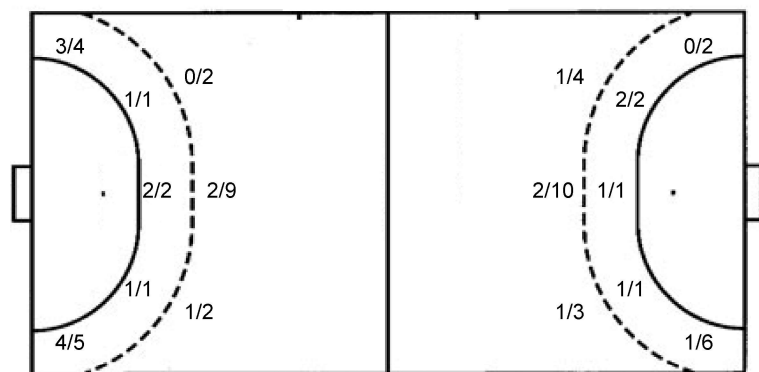
TOTAL

2/5		1/2
1/5	1/1	3/7
3/9	1/1	0/3

Shots by position

ATTACK

DEFENSE



7m penalties 3/4
Fastbreak 0/0
Breakthrough 6/8
Long dist. 0/0

7m penalties 3/4
Fastbreak 0/0
Breakthrough 9/11
Long dist. 1/1

Shooting statistics

Position	Goals	Sav.	Miss.	Post	Blk.	Total	%
Back (9m)	3	1	2	3	4	13	23
Line (6m)	4	0	0	0	0	4	100
Wing	7	2	0	0	0	9	78
7m penalties	3	1	0	0	0	4	75
Fastbreak	0	0	0	0	0	0	0
Breakthrough	6	2	0	0	0	8	75
Total	23	6	2	3	4	38	61

Jersey number Tot. Total shooting 6m 6m (line) shooting 9m 9m shooting Wng Wing shooting FB Fastbreak sh. 7m 7m penalty sh.
Brk. Breakthrough sh. LD Long distance sh. As. Assists PC Pass clear chance E7 Earned 7m pen. TF Technical faults St. Steals
2m 2m punishments C7. Committed 7m E2 Earned 2m pun. YC. Yellow cards R/B Red/Blue cards Blk. Blocks S Starting Line-up

Handball statistics and livescore by Toma-soft ltd (www.toma-soft.hr)



25th IHF Women's Junior World Championship 2026



Preliminary Round - Group H, 2. round

Match Team Statistics
Match No. 23

Faroe Islands 23 - 22 Croatia
(14 - 11) (9 - 11)

25.6.2026. 16:15
Attendance: 120
Jinzhong University
Gymnasium

Referees: Raul Oyarzun Aylagas (ESP) / Aritz Zaragueta (ESP)

Croatia

Players		Goals / shots										Attack					Def.			Penalties			TP		
#	Surname and name	S	Tot.	%	9m	6m	Wing	7m	FB	Brk.	LD	As.	PC	E7	E2	TF	St.	C7	Blk	YC	2m	R		B	
1	PUDIĆ Lara																								37:11
3	IVANČIĆ Una	S	0/2	0	0/2								1	1					1						43:21
6	RUSAN Lorena	S	1/3	33		1/1	0/2																		47:29
11	BRUSIĆ Mirna	S	7/8	88	2/3			3/3		2/2			1	3	1	1	2	1							54:11
12	KRALJEVIĆ Nika	S																							12:16
16	TURKALJ Marta																								8:12
18	ZUBAC Josipa	S	5/13	38	0/5		0/1			5/7				1	3	2	2	1							45:28
21	ĐELEKOVIĆ Tara	S	4/8	50	0/4	1/1				2/2	1/1		3	1		1		1	1	3	1	1			53:43
25	DANANIĆ Dora	S	2/6	33		1/1	1/5																		43:27
26	JANKOVIĆ Leona																1	1	1					1	15:02
31	MARINIĆ Lorena		2/2	100	1/1	1/1											1		1	1					50:26
34	MIKLIĆ Jana		1/3	33	1/2			0/1									3								9:14
	Team / bench																								
	TOTAL		22/45	49	4/17	4/4	1/8	3/4	0/0	9/11	1/1		5	6	4	4	9	4	4	4	1	1	1	0	

Goalkeepers		Saves / shots									
#	Surname and name	Tot.	%	9m	6m	Wing	7m	FB	Brk.	LD	
1	PUDIĆ Lara	5/19	26	1/4	0/2	1/4	1/3		2/6		
12	KRALJEVIĆ Nika	1/7	14		0/1	1/4			0/2		
16	TURKALJ Marta	0/3	0		0/1	0/1	0/1				
	TOTAL	6/29	21	1/4	0/4	2/9	1/4	0/0	2/8	0/0	

Coach: **Vedran Krkač**

Number of attacks: 48, Efficiency: 46%, Average Duration: 36.52 seconds

Attack by type of defense

	Shots	9m	6m	Wing	TF	E7	E2
On def. 6-0	18/40	4/17	4/4	1/8	9	4	4
Fastbreak	0/0				0	0	0

Defense by type

	Total	9m	6m	Wing	Stl.	C7	2m
Def. 6-0	20/33	3/13	4/4	7/8	4	3	0
Def. 5-1	0/1	0/0	0/0	0/1	0	1	0
Fastbreak	0/0				0	0	1

Attack with superiority / minority / goalkeeper out

	Attack				Reaction		
	Att.	Eff.	Shots	TF	FB	LD	Tot.
7 on 6 (GK out)	2	0%	0/1	1	0/0	0/0	0/0
6 on 6 (GK out)	2	0%	0/2	0	0/0	0/0	0/0
6 on 6	34	53%	18/30	4			
6 on 5	10	40%	4/6	4			

Player superiority / GK out counted at the end of attack (in case it changes during attack)

Defense with superiority / minority / goalkeeper out

	Attack				Reaction		
	Att.	Eff.	Shots	TF	FB	LD	Tot.
7 on 6 (GK out)	15	33%	5/12	3	0/0	1/1	1/1
7 on 5 (GK out)	3	100%	3/3	0	0/0	0/0	0/0
6 on 6 (GK out)	4	75%	3/4	0	0/0	0/0	0/0
6 on 6	22	41%	9/13	9			
6 on 5	1	100%	1/1	0			
5 on 6	2	100%	2/2	0			

Numbers show attacking numbers of opponent. Lower efficiency of opponent means better defense of this team

Jersey number Tot. Total shooting 6m 6m (line) shooting 9m 9m shooting Wng Wing shooting FB Fastbreak sh. 7m 7m penalty sh.
Brk. Breakthrough sh. LD Long distance sh. As. Assists PC Pass clear chance E7 Earned 7m pen. TF Technical faults St. Steals
2m 2m punishments C7. Committed 7m E2 Earned 2m pun. YC. Yellow cards R/B Red/Blue cards Blk. Blocks S Starting Line-up



25th IHF Women's Junior World Championship 2026



Preliminary Round - Group H, 2. round

Match Team Statistics

Match No. 23

Faroe Islands 23 - 22 Croatia

(14 - 11) (9 - 11)

25.6.2026. 16:15

Attendance: 120

Jinzhong University

Gymnasium

Referees: Raul Oyarzun Aylagas (ESP) / Aritz Zaragueta (ESP)

Shot distribution by player

3 U. Ivančić

1 post 1 miss.

6 L. Rusan

		0/1
1/2		

11 M. Brusić

1/1		3/3
1/1		2/2

1 miss.

18 J. Zubac

1/2		
2/3		1/2
	0/1	1/1

1 post 3 miss.

21 T. Đelekovičan

1/1		1/1
1/2	1/1	

3 block

25 D. Dananić

1/2		
	0/1	0/1
1/1		

1 post

26 L. Janković

31 L. Marinić

1/1		
1/1		

34 J. Miklić

		0/1
1/2		

TOTAL

3/5		1/2
4/5	0/1	4/7
6/9	1/2	3/3

3 post 5 miss. 3 block

Saves distribution goalkeepers

1 L. Pudić

1/3		0/1
0/2		3/6
0/3	1/1	0/2

12 N. Kraljević

0/1		
0/4		1/1

16 M. Turkalj

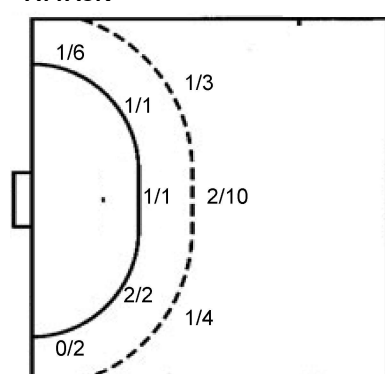
		0/3

TOTAL

1/3		0/1
0/3		3/6
0/7	1/1	1/6

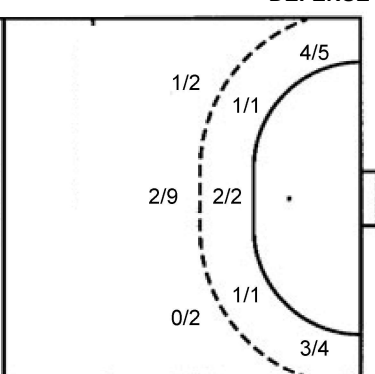
Shots by position

ATTACK



7m penalties 3/4
Fastbreak 0/0
Breakthrough 9/11
Long dist. 1/1

DEFENSE



7m penalties 3/4
Fastbreak 0/0
Breakthrough 6/8
Long dist. 0/0

Shooting statistics

Position	Goals	Sav.	Miss.	Post	Blk.	Total	%
Back (9m)	4	4	5	1	3	17	24
Line (6m)	4	0	0	0	0	4	100
Wing	1	6	0	1	0	8	13
7m penalties	3	1	0	0	0	4	75
Fastbreak	0	0	0	0	0	0	0
Breakthrough	9	1	0	1	0	11	82
Total	21	12	5	3	3	44	48

Jersey number Tot. Total shooting 6m 6m (line) shooting 9m 9m shooting Wng Wing shooting FB Fastbreak sh. 7m 7m penalty sh.
Brk. Breakthrough sh. LD Long distance sh. As. Assists PC Pass clear chance E7 Earned 7m pen. TF Technical faults St. Steals
2m 2m punishments C7. Committed 7m E2 Earned 2m pun. YC. Yellow cards R/B Red/Blue cards Blk. Blocks S Starting Line-up

Handball statistics and livescore by Toma-soft ltd (www.toma-soft.hr)

