



25th IHF Women's Junior World Championship 2026



Preliminary Round - Group G, 2. round

Match Team Statistics
Match No. 21

Poland 33 - 10 Chinese Taipei
(14 - 5) (19 - 5)

25.6.2026. 14:00
Attendance: 170
Jinzhong University
Gymnasium

Referees: Maryna Duplii (UKR) / Olena Karpushchenko (UKR)

Shot distribution by player

3 M. Wrzesińska

		1/1

2 post

4 M. Machnio

1/1		
1/1	0/1	

5 M. Mazurkiewicz

1/1		
2/2		

1 post 1 miss.

6 L. Kepka

	1/1	2/2

1 miss.

8 N. Gardian

	0/1	

9 J. Grzesista

		1/1
1/1		2/2

2 miss.

10 Z. Krupa

		1/2
		1/2

1 miss.

14 M. Schlabs

1/1		
1/1		

1 miss.

19 I. Trochimczyk

	0/1	
		1/1

22 M. Biesaga

	1/1	

42 Z. Chwojnicka

2/2		2/2
2/2		

44 Z. Zimnicka

2/2		1/1
0/1		
0/1		

1 post 1 miss. 1/1 lob

52 M. Kanczkowska

1/1		3/3

TOTAL

5/5	1/2	6/6
2/3	0/1	2/3
8/9	1/2	7/8

4 post 7 miss. 1/1 lob

Saves distribution goalkeepers

1 J. Kalbarczyk

0/1	1/1	0/1
	3/3	

12 N. Smelcerz

	1/1	
	1/1	1/1
1/3		2/3

30 M. Pentek

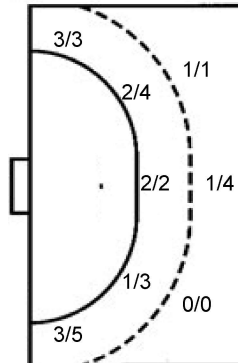
		2/2
	1/1	1/2
2/4	2/3	1/2

TOTAL

0/1	2/2	2/3
	2/2	2/3
3/7	5/6	3/5

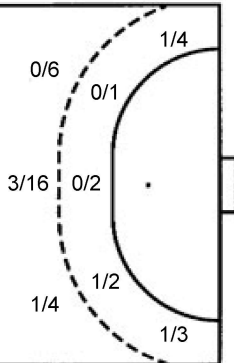
Shots by position

ATTACK



7m penalties 2/4
Fastbreak 7/7
Breakthrough 11/17
Long dist. 0/1

DEFENSE



7m penalties 0/1
Fastbreak 1/3
Breakthrough 2/6
Long dist. 0/0

Shooting statistics

Position	Goals	Sav.	Miss.	Post	Blk.	Total	%
Back (9m)	2	1	2	0	0	5	40
Line (6m)	5	1	0	3	0	9	56
Wing	6	1	1	0	0	8	75
7m penalties	2	1	0	1	0	4	50
Fastbreak	7	0	0	0	0	7	100
Breakthrough	11	3	3	0	0	17	65
Total	33	7	6	4	0	50	66

Jersey number Tot. Total shooting 6m 6m (line) shooting 9m 9m shooting Wng Wing shooting FB Fastbreak sh. 7m 7m penalty sh.
Brk. Breakthrough sh. LD Long distance sh. As. Assists PC Pass clear chance E7 Earned 7m pen. TF Technical faults St. Steals
2m 2m punishments C7. Committed 7m E2 Earned 2m pun. YC. Yellow cards R/B Red/Blue cards Blk. Blocks S Starting Line-up

Handball statistics and livescore by Toma-soft ltd (www.toma-soft.hr)



25th IHF Women's Junior World Championship 2026



Preliminary Round - Group G, 2. round

Match Team Statistics
Match No. 21

Poland 33 - 10 Chinese Taipei
(14 - 5) (19 - 5)

25.6.2026. 14:00
Attendance: 170
Jinzhong University
Gymnasium

Referees: Maryna Duplii (UKR) / Olena Karpushchenko (UKR)

Chinese Taipei

#	Surname and name	S	Goals / shots								Attack					Def.			Penalties				TP						
			Tot.	%	9m	6m	Wing	7m	FB	Brk.	LD	As.	PC	E7	E2	TF	St.	C7	Blk	YC	2m	R		B					
7	LIN Yi Jun		1/7	14	1/6		0/1								1	1		1	4	1	1								38:59
9	LIN Ling Xuan		0/1	0			0/1																						15:50
10	LIN Ching	S	2/8	25	0/3	1/1	1/1		0/1	0/2				1	2				4	1									36:31
12	LIN Jui Chi																												3:26
17	CHAO Chen Jiun		0/1	0			0/1													2									23:55
18	FU Yu Jun	S																											54:08
19	YANG Yu Xuan	S	1/3	33			0/1			1/2						1				1									42:47
24	CHANG Chia I		3/10	30	2/6	0/2			1/2					2	2			1	6										31:57
55	LIN Siang Ting	S	2/4	50	1/3					1/1				1				3	1					2				26:09	
57	LIN Pei Ying		0/3	0	0/3										2			2		1				1				26:25	
58	YEH Chih Ling	S	1/2	50			1/2																						33:40
59	ZHANG You Xuan	S	0/2	0	0/2													2	1	1									17:45
63	LIN Tsen Pei																												
74	CHOU Yu Chen		0/2	0	0/2														1										6:09
77	HSU Fang Ying	S	0/5	0	0/1	0/2		0/1		0/1				1	1			1	3					1				45:20	
81	CHIANG Cai Wei														1			1						1					16:59
	Team / bench																		1										
	TOTAL		10/48	21	4/26	1/5	2/7	0/1	1/3	2/6	0/0			5	10	1	4	26	7	4	0	0	5	0	0				

#	Surname and name	Saves / shots								
		Tot.	%	9m	6m	Wing	7m	FB	Brk.	LD
12	LIN Jui Chi	0/3	0			0/1			0/2	
18	FU Yu Jun	7/37	19	1/3	1/6	1/6	1/3	0/7	3/12	
	TOTAL	7/40	18	1/3	1/6	1/7	1/3	1/7	3/14	0/0

Coach: **Tsung Sheng Tan**

Number of attacks: 69, Efficiency: 14%, Average Duration: 32.09 seconds

Attack by type of defense

	Shots	9m	6m	Wing	TF	E7	E2
On def. 6-0	9/42	4/26	1/4	2/6	26	1	4
Fastbreak	1/3				0	0	0

Defense by type

	Total	9m	6m	Wing	Stl.	C7	2m
Def. 6-0	24/39	2/5	5/9	6/8	7	4	0
Fastbreak	7/7				0	0	5

Attack with superiority / minority / goalkeeper out

	Attack				Reaction		
	Att.	Eff.	Shots	TF	FB	LD	Tot.
7 on 6 (GK out)	1	0%	0/0	1	1/1	0/1	1/2
6 on 6 (GK out)	7	14%	1/3	4	0/0	0/0	0/0
6 on 6	51	16%	8/32	19			
5 on 6	3	0%	0/3	0			
7 on 5 (GK out)	1	0%	0/0	1	0/0	0/0	0/0
6 on 5	5	20%	1/4	1			
6 on 4	1	0%	0/1	0			

Player superiority / GK out counted at the end of attack (in case it changes during attack)

Defense with superiority / minority / goalkeeper out

	Attack				Reaction		
	Att.	Eff.	Shots	TF	FB	LD	Tot.
7 on 6 (GK out)	2	100%	2/2	0	0/0	0/0	0/0
6 on 6 (GK out)	6	33%	2/3	3	0/0	0/0	0/0
6 on 6	51	51%	26/38	13			
6 on 5	9	33%	3/6	3			

Numbers show attacking numbers of opponent. Lower efficiency of opponent means better defense of this team

Jersey number Tot. Total shooting 6m 6m (line) shooting 9m 9m shooting Wng Wing shooting FB Fastbreak sh. 7m 7m penalty sh.
Brk. Breakthrough sh. LD Long distance sh. As. Assists PC Pass clear chance E7 Earned 7m pen. TF Technical faults St. Steals
2m 2m punishments C7. Committed 7m E2 Earned 2m pun. YC. Yellow cards R/B Red/Blue cards Blk. Blocks S Starting Line-up

Handball statistics and livescore by Toma-soft ltd (www.toma-soft.hr)



25th IHF Women's Junior World Championship 2026



Preliminary Round - Group G, 2. round

Match Team Statistics

Match No. 21

Poland 33 - 10 Chinese Taipei

(14 - 5) (19 - 5)

25.6.2026. 14:00

Attendance: 170

Jinzhong University

Gymnasium

Referees: Maryna Duplii (UKR) / Olena Karpushchenko (UKR)

Shot distribution by player

7 Y. Lin

	0/1	
		1/1
0/1	0/1	0/1

1 miss. 1 block

9 L. Lin

	0/1	

10 C. Lin

	0/1	0/1
2/3		

1 post 1 miss.

17 C. Chao

1 post

19 Y. Yang

		0/1
1/2		

24 C. Chang

	0/1	
1/1	1/1	1/1

1 post 3 miss. 2 block

55 S. Lin

1/1		1/1

2 block

57 P. Lin

		0/1
0/1		

1 block

58 C. Yeh

	0/1	1/1

59 Y. Zhang

	0/1	
	0/1	

63 T. Lin

74 Y. Chou

2 miss.

77 F. Hsu

		0/1
		0/2

1 post 1 miss.

81 C. Chiang

TOTAL

1/1	0/2	1/3
	0/2	1/3
4/7	1/6	2/5

4 post 8 miss. 6 block

Saves distribution goalkeepers

12 J. Lin

0/1		0/1
0/1		

18 Y. Fu

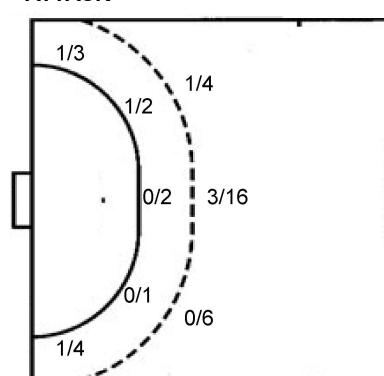
0/4	1/2	0/5
1/3	1/1	1/3
1/8	1/2	1/8

TOTAL

0/5	1/2	0/6
1/3	1/1	1/3
1/9	1/2	1/8

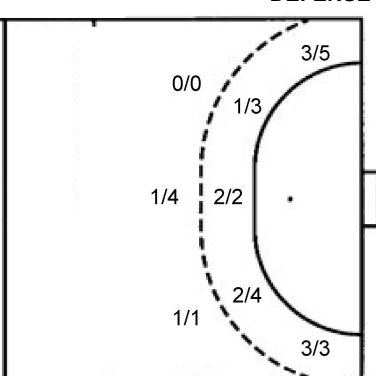
Shots by position

ATTACK



7m penalties 0/1
Fastbreak 1/3
Breakthrough 2/6
Long dist. 0/0

DEFENSE



7m penalties 2/4
Fastbreak 7/7
Breakthrough 11/17
Long dist. 0/1

Shooting statistics

Position	Goals	Sav.	Miss.	Post	Blk.	Total	%
Back (9m)	4	9	6	1	6	26	15
Line (6m)	1	2	1	1	0	5	20
Wing	2	4	0	1	0	7	29
7m penalties	0	1	0	0	0	1	0
Fastbreak	1	1	1	0	0	3	33
Breakthrough	2	3	0	1	0	6	33
Total	10	20	8	4	6	48	21

Jersey number Tot. Total shooting 6m 6m (line) shooting 9m 9m shooting Wng Wing shooting FB Fastbreak sh. 7m 7m penalty sh.
Brk. Breakthrough sh. LD Long distance sh. As. Assists PC Pass clear chance E7 Earned 7m pen. TF Technical faults St. Steals
2m 2m punishments C7. Committed 7m E2 Earned 2m pun. YC. Yellow cards R/B Red/Blue cards Blk. Blocks S Starting Line-up

Handball statistics and livescore by Toma-soft ltd (www.toma-soft.hr)

