



25th IHF Women's Junior World Championship 2026



Preliminary Round - Group F, 2. round

Match Team Statistics

Match No. 20

Czechia 33 - 23 Iceland

(16 - 11) (17 - 12)

25.6.2026. 14:00

Attendance: 325

Jinzhong City Gymnasium

Referees: Nenad Nikolovski (MKD) / Ismailj Metalari (MKD)

Czechia

#	Surname and name	S	Goals / shots								Attack					Def.			Penalties				TP					
			Tot.	%	9m	6m	Wing	7m	FB	Brk.	LD	As.	PC	E7	E2	TF	St.	C7	Blk	YC	2m	R		B				
2	KRAPKOVA Michaela	S	2/4	50			1/3				1/1																	27:33
5	RAMPOVA Claudia	S	2/2	100			1/1				1/1																	38:56
6	PAZDEROVA Tereza		2/3	67			2/2																					34:46
7	VRBKOVA Viktorie		2/2	100		1/1					1/1				3		2	2	1									28:22
9	CHALOUPKOVA Anna		2/2	100		2/2										1												21:35
10	MATEJKOVA Regina	S	3/4	75			1/1																					23:50
11	HOLENAKOVA Melisa	S	3/7	43					0/1		3/5	0/1			3			1	2	3	1							37:22
12	CHVATALOVA Adela																											0:51
13	PEJSOVA Viktorie	S	4/6	67	0/2	1/1					3/3				4	2												36:27
19	POSPISILOVA Tereza	S	3/3	100		3/3																						42:26
20	BABOROVSKA Natálie		2/4	50							2/4				2		1											12:04
21	POLANKOVA Markéta		1/1	100			1/1																					21:47
22	FILIPKOVA Tereza		7/13	54	2/5			1/3			4/4	0/1		1						2	1							29:32
25	KNEDLOVA Viktorie																											
26	CHODOUNSKA Anna																											7:51
27	BUCHTOVA Andrea	S														1												56:38
	Team / bench																											
	TOTAL		33/51	65	2/7	8/8	5/7	1/4	0/0	17/22	0/3	13	3	4	4	9	8	4	1	1	4	0	0					

#	Surname and name	Saves / shots								
		Tot.	%	9m	6m	Wing	7m	FB	Brk.	LD
12	CHVATALOVA Adela	0/2	0		0/1		0/1			
27	BUCHTOVA Andrea	17/36	47	6/7	1/4	6/9	0/2		4/14	
	TOTAL	17/38	45	6/7	1/5	6/9	0/3	0/0	4/14	0/0

Coach: Dušan Poloz

Number of attacks: 57, Efficiency: 58%, Average Duration: 25.63 seconds

Attack by type of defense

	Shots	9m	6m	Wing	TF	E7	E2
On def. 6-0	26/33	2/6	7/7	3/4	7	3	1
On def. 5-1	6/10	0/1	1/1	2/3	2	1	3
Fastbreak	0/0				0	0	0

Defense by type

	Total	9m	6m	Wing	Stl.	C7	2m
Def. 6-0	18/37	1/8	4/5	3/10	8	4	0
Fastbreak	0/0				0	0	4

Attack with superiority / minority / goalkeeper out

	Attack				Reaction		
	Att.	Eff.	Shots	TF	FB	LD	Tot.
7 on 6 (GK out)	3	67%	2/2	1	0/0	1/1	1/1
6 on 6 (GK out)	5	40%	2/4	1	0/0	1/1	1/1
6 on 6	42	62%	26/36	6			
6 on 5	7	43%	3/6	1			

Player superiority / GK out counted at the end of attack (in case it changes during attack)

Defense with superiority / minority / goalkeeper out

	Attack				Reaction		
	Att.	Eff.	Shots	TF	FB	LD	Tot.
7 on 6 (GK out)	15	47%	7/9	6	0/0	0/1	0/1
6 on 6 (GK out)	5	20%	1/4	1	0/0	0/1	0/1
6 on 6	29	34%	10/19	10			
6 on 5 (GK out)	1	0%	0/1	0	0/0	0/0	0/0
6 on 5	7	71%	5/6	1			

Numbers show attacking numbers of opponent. Lower efficiency of opponent means better defense of this team

Jersey number Tot. Total shooting 6m 6m (line) shooting 9m 9m shooting Wng Wing shooting FB Fastbreak sh. 7m 7m penalty sh.
 Brk. Breakthrough sh. LD Long distance sh. As. Assists PC Pass clear chance E7 Earned 7m pen. TF Technical faults St. Steals
 2m 2m punishments C7. Committed 7m E2 Earned 2m pun. YC. Yellow cards R/B Red/Blue cards Blk. Blocks S Starting Line-up



25th IHF Women's Junior World Championship 2026



Preliminary Round - Group F, 2. round

Match Team Statistics

Match No. 20

Czechia 33 - 23 Iceland

(16 - 11) (17 - 12)

25.6.2026. 14:00

Attendance: 325

Jinzhong City Gymnasium

Referees: Nenad Nikolovski (MKD) / Ismailj Metalari (MKD)

Shot distribution by player

2 M. Krapková

1/2		1/1
0/1		

5 C. Rampová

1/1	1/1	

6 T. Pazderová

1/1		

1 miss. 1/1 lob

7 V. Vrbková

1/1		

1/1 lob

9 A. Chaloupková

1/1		
	1/1	

10 R. Matějková

1/1		1/1
0/1		
		1/1

11 M. Holeňáková

1/1		
1/2		
1/3		

1 miss.

13 V. Pejšová

	0/1	1/2
1/1		2/2

19 T. Pospišilová

1/1		
1/1		
		1/1

20 N. Baborovská

1/1	0/1	
1/2		

21 M. Polanková

1/1		

22 T. Filipková

1/1		1/1
2/2		3/3

3 post 2 miss. 1 block

25 V. Knedlová

26 A. Chodounská

TOTAL

7/8	1/2	2/2
6/9	0/1	2/3
5/8	1/1	7/7

3 post 4 miss. 1 block 2/2 lob

Saves distribution goalkeepers

12 A. Chvátalová

		0/1

27 A. Buchtová

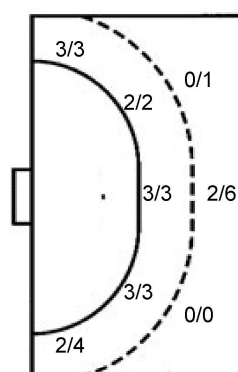
2/4	1/2	0/2
3/3	2/2	3/6
3/9	0/3	3/5

TOTAL

2/4	1/2	0/2
3/3	2/2	3/7
3/9	0/3	3/5

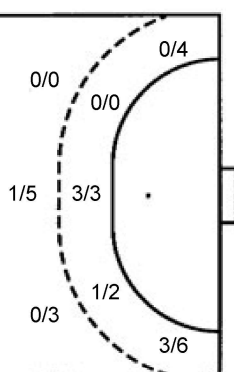
Shots by position

ATTACK



7m penalties 1/4
Fastbreak 0/0
Breakthrough 17/22
Long dist. 0/3

DEFENSE



7m penalties 3/4
Fastbreak 0/0
Breakthrough 10/14
Long dist. 2/2

Shooting statistics

Position	Goals	Sav.	Miss.	Post	Blk.	Total	%
Back (9m)	2	2	2	0	1	7	29
Line (6m)	8	0	0	0	0	8	100
Wing	5	2	0	0	0	7	71
7m penalties	1	1	0	2	0	4	25
Fastbreak	0	0	0	0	0	0	0
Breakthrough	17	5	0	0	0	22	77
Total	33	10	2	2	1	48	69

Jersey number Tot. Total shooting 6m 6m (line) shooting 9m 9m shooting Wng Wing shooting FB Fastbreak sh. 7m 7m penalty sh.
Brk. Breakthrough sh. LD Long distance sh. As. Assists PC Pass clear chance E7 Earned 7m pen. TF Technical faults St. Steals
2m 2m punishments C7. Committed 7m E2 Earned 2m pun. YC. Yellow cards R/B Red/Blue cards Blk. Blocks S Starting Line-up

Handball statistics and livescore by Toma-soft ltd (www.toma-soft.hr)



25th IHF Women's Junior World Championship 2026



Preliminary Round - Group F, 2. round

Match Team Statistics
Match No. 20

Czechia 33 - 23 Iceland
(16 - 11) (17 - 12)

25.6.2026. 14:00
Attendance: 325
Jinzhong City Gymnasium

Referees: Nenad Nikolovski (MKD) / Ismailj Metalari (MKD)

Iceland

#	Surname and name	S	Goals / shots								Attack				Def.			Penalties				TP			
			Tot.	%	9m	6m	Wing	7m	FB	Brk.	LD	As.	PC	E7	E2	TF	St.	C7	Blk	YC	2m		R	B	
4	THÓRHALLSDÓTTIR Ásthildur Jóna	S	0/3	0			0/3																	48:44	
9	EIRIKSDÓTTIR Ama Karítas		8/12	67	0/1	1/2		3/4						1		1	2							33:01	
10	GUDMUNDSDÓTTIR Bergrós Ásta		0/1	0	0/1									1										25:37	
11	ADALSTEINSDÓTTIR Emelía Ósk	S	1/1	100		1/1									1							1		37:21	
12	HALLGRÍMSDÓTTIR Sif	S	1/1	100													1							49:31	
13	GUDJÓNSDÓTTIR Gudmunda Audur		2/2	100		1/1											2	1				1		31:15	
14	VIKTORSÓTTIR Alexandra Ósk		3/6	50			3/6											1						37:22	
16	ELÍASARDÓTTIR Elísabet Millý																								
17	TRAUSTADÓTTIR Guðrún Hekla	S	7/9	78	1/3	1/1								1	3	1	1	2	2	1		2		44:52	
19	UNNARSDÓTTIR Birna María		1/2	50			0/1							1	1		1	2						23:02	
21	HJARDAR Ásdís Halla																								
22	GISLADÓTTIR Sara Rún																	1						4:15	
23	FRÓDADÓTTIR Sara Lind	S																1						13:37	
24	HAUKSDÓTTIR Inga Fanney														1		1							19:09	
26	PÁLSDÓTTIR Dagmar Guðrun	S	0/5	0	0/2													2	1					30:18	
35	BRAGADÓTTIR Hulda Hrönn	S	0/1	0	0/1									1		1	2					1		21:56	
Team / bench																							1		
TOTAL			23/43	53	1/8	4/5	3/10	3/4	0/0	10/14	2/2	4	6	4	3	18	1	4	1	2	4	0	0		

#	Surname and name	Saves / shots								
		Tot.	%	9m	6m	Wing	7m	FB	Brk.	LD
12	HALLGRÍMSDÓTTIR Sif	10/43	23	2/4	0/8	2/7	1/2		5/22	
16	ELÍASARDÓTTIR Elísabet Millý									
TOTAL		10/43	23	2/4	0/8	2/7	1/2	0/0	5/22	0/0

Coach: Halldór Stefán Haraldsson

Number of attacks: 57, Efficiency: 40%, Average Duration: 37.02 seconds

Attack by type of defense

	Shots	9m	6m	Wing	TF	E7	E2
On def. 6-0	18/37	1/8	4/5	3/10	18	4	3
Fastbreak	0/0				0	0	0

Defense by type

	Total	9m	6m	Wing	Stl.	C7	2m
Def. 6-0	26/33	2/6	7/7	3/4	1	3	0
Def. 5-1	6/10	0/1	1/1	2/3	0	1	0
Fastbreak	0/0				0	0	4

Attack with superiority / minority / goalkeeper out

	Attack				Reaction		
	Att.	Eff.	Shots	TF	FB	LD	Tot.
7 on 6 (GK out)	15	47%	7/9	6	0/0	0/1	0/1
6 on 6 (GK out)	5	20%	1/4	1	0/0	0/1	0/1
6 on 6	29	34%	10/19	10			
6 on 5 (GK out)	1	0%	0/1	0	0/0	0/0	0/0
6 on 5	7	71%	5/6	1			

Player superiority / GK out counted at the end of attack (in case it changes during attack)

Defense with superiority / minority / goalkeeper out

	Attack				Reaction		
	Att.	Eff.	Shots	TF	FB	LD	Tot.
7 on 6 (GK out)	3	67%	2/2	1	0/0	1/1	1/1
6 on 6 (GK out)	5	40%	2/4	1	0/0	1/1	1/1
6 on 6	42	62%	26/36	6			
6 on 5	7	43%	3/6	1			

Numbers show attacking numbers of opponent. Lower efficiency of opponent means better defense of this team

Jersey number Tot. Total shooting 6m 6m (line) shooting 9m 9m shooting Wng Wing shooting FB Fastbreak sh. 7m 7m penalty sh.
Brk. Breakthrough sh. LD Long distance sh. As. Assists PC Pass clear chance E7 Earned 7m pen. TF Technical faults St. Steals
2m 2m punishments C7. Committed 7m E2 Earned 2m pun. YC. Yellow cards R/B Red/Blue cards Blk. Blocks S Starting Line-up



25th IHF Women's Junior World Championship 2026



Preliminary Round - Group F, 2. round

Match Team Statistics

Match No. 20

Czechia 33 - 23 Iceland

(16 - 11) (17 - 12)

25.6.2026. 14:00

Attendance: 325

Jinzhong City Gymnasium

Referees: Nenad Nikolovski (MKD) / Ismailj Metalari (MKD)

Shot distribution by player

4 Á. Thórhallsdóttir

0/2		
	0/1	

9 A. Eiríksdóttir

1/1	1/1	
		3/4
0/1	1/1	1/2

1 post 1/1 lob

10 B. Gudmundsdóttir

0/1		

11 E. Adalsteinsdóttir

1/1		

13 G. Gudjónsdóttir

2/2		

14 A. Víktorsdóttir

		0/1
1/2	1/1	1/1

1 post

17 G. Traustadóttir

	0/1	2/2
		1/1
3/3	1/1	0/1

19 B. Unnarsdóttir

1/1		
	0/1	

21 Á. Hjardar

22 S. Gísladóttir

23 S. Fródadóttir

24 I. Hauksdóttir

26 D. Pálsdóttir

0/1		0/1
0/1		0/1

1 block

35 H. Bragadóttir

0/1		

TOTAL

2/4	1/2	2/2
0/3	0/2	4/7
7/10	3/3	2/5

2 post 1 block 1/1 lob

Saves distribution goalkeepers

12 S.

Hallgrímsdóttir

1/8	1/2	0/2
3/9	1/1	1/3
3/8	0/1	0/7

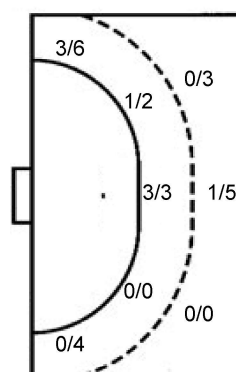
16 E. Elíasardóttir

TOTAL

1/8	1/2	0/2
3/9	1/1	1/3
3/8	0/1	0/7

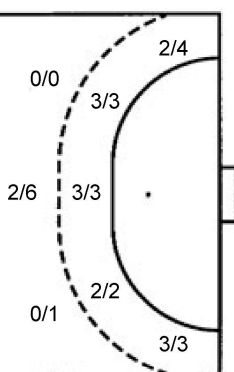
Shots by position

ATTACK



7m penalties 3/4
Fastbreak 0/0
Breakthrough 10/14
Long dist. 2/2

DEFENSE



7m penalties 1/4
Fastbreak 0/0
Breakthrough 17/22
Long dist. 0/3

Shooting statistics

Position	Goals	Sav.	Miss.	Post	Blk.	Total	%
Back (9m)	1	6	0	0	1	8	13
Line (6m)	4	1	0	0	0	5	80
Wing	3	6	0	1	0	10	30
7m penalties	3	0	0	1	0	4	75
Fastbreak	0	0	0	0	0	0	0
Breakthrough	10	4	0	0	0	14	71
Total	21	17	0	2	1	41	51

Jersey number Tot. Total shooting 6m 6m (line) shooting 9m 9m shooting Wng Wing shooting FB Fastbreak sh. 7m 7m penalty sh.
Brk. Breakthrough sh. LD Long distance sh. As. Assists PC Pass clear chance E7 Earned 7m pen. TF Technical faults St. Steals
2m 2m punishments C7. Committed 7m E2 Earned 2m pun. YC. Yellow cards R/B Red/Blue cards Blk. Blocks S Starting Line-up

Handball statistics and livescore by Toma-soft ltd (www.toma-soft.hr)

