



25th IHF Women's Junior World Championship 2026



Preliminary Round - Group E, 2. round

Match Team Statistics
Match No. 18

P.R. of China 27 - 18 Guinea
(17 - 8) (10 - 10)

25.6.2026. 18:30
Attendance: 2500
Jinzhong City Gymnasium

Referees: Bruna Correa (BRA) / Renata Correa (BRA)

P.R. of China

Players		Goals / shots										Attack				Def.			Penalties				TP			
#	Surname and name	S	Tot.	%	9m	6m	Wing	7m	FB	Brk.	LD	As.	PC	E7	E2	TF	St.	C7	Blk	YC	2m	R	B			
3	PAN Fengying		1/2	50	1/2							1				1	4								16:52	
5	ZHANG Jingwen		1/2	50	0/1	1/1										1									7:58	
6	FU Yujie	S	3/4	75		2/3	1/1								1										12:17	
8	LIANG Jing	S	3/6	50	2/4			0/1		1/1		3	2			3									44:21	
9	ZHANG Shuoyan	S	7/8	88	0/1	2/2		3/3		2/2		2	2	1	1	3		1							40:49	
10	HU Jiaxin		1/2	50				1/1		0/1			1	1	1	1									13:38	
12	WANG Xiaoyan														1		1								37:01	
15	YANG Yue	S	1/1	100		1/1									1										19:04	
16	HUANG Sitong	S										1													19:29	
23	ZHENG Yun	S										3	2			1	1	1				1	1		34:20	
24	ZHU Yifan											1			1	1									23:27	
26	LIU Yutong														2					1					24:18	
37	CHEN Xinyu		2/2	100		2/2						1												1	19:09	
39	SHA Yiyao	S	1/3	33		0/1			1/2								1								39:11	
55	LIU Yixuan		2/3	67			1/2		1/1																20:33	
56	CHENG Yahan		5/10	50		1/1	2/5	1/2	1/2			1					1								47:33	
	Team / bench																									
	TOTAL		27/43	63	3/8	9/11	4/8	5/7	3/5	3/4	0/0	13	8	7	2	15	3	2	1	0	2	1	0			

Goalkeepers		Saves / shots									
#	Surname and name	Tot.	%	9m	6m	Wing	7m	FB	Brk.	LD	
12	WANG Xiaoyan	10/24	42	6/8	3/6	0/1	0/2	0/1	1/6		
16	HUANG Sitong	2/6	33	2/2	0/1			0/1	0/2		
	TOTAL	12/30	40	8/10	3/7	0/1	0/2	0/2	1/8	0/0	

Coach: Zsadányi Sándor

Number of attacks: 57, Efficiency: 47%, Average Duration: 30.16 seconds

Attack by type of defense

	Shots	9m	6m	Wing	TF	E7	E2
On def. 6-0	10/18	3/6	3/4	3/6	13	4	1
On def. 5-1	7/10	0/2	4/4	1/2	2	3	1
Fastbreak	3/5				0	0	0

Defense by type

	Total	9m	6m	Wing	Stl.	C7	2m
Def. 6-0	12/27	2/11	2/5	1/1	3	2	0
Fastbreak	2/3				0	0	2

Attack with superiority / minority / goalkeeper out

	Attack				Reaction		
	Att.	Eff.	Shots	TF	FB	LD	Tot.
7 on 6 (GK out)	1	0%	0/0	1	1/1	0/0	1/1
6 on 6 (GK out)	5	40%	2/2	3	0/0	0/0	0/0
6 on 6	46	46%	21/35	11			
6 on 5	5	80%	4/5	0			

Player superiority / GK out counted at the end of attack (in case it changes during attack)

Defense with superiority / minority / goalkeeper out

	Attack				Reaction		
	Att.	Eff.	Shots	TF	FB	LD	Tot.
6 on 6	47	32%	15/28	19			
5 on 6	4	0%	0/1	3			
6 on 5	6	50%	3/4	2			

Numbers show attacking numbers of opponent. Lower efficiency of opponent means better defense of this team

Jersey number Tot. Total shooting 6m 6m (line) shooting 9m 9m shooting Wng Wing shooting FB Fastbreak sh. 7m 7m penalty sh.
Brk. Breakthrough sh. LD Long distance sh. As. Assists PC Pass clear chance E7 Earned 7m pen. TF Technical faults St. Steals
2m 2m punishments C7. Committed 7m E2 Earned 2m pun. YC. Yellow cards R/B Red/Blue cards Blk. Blocks S Starting Line-up



25th IHF Women's Junior World Championship 2026



Preliminary Round - Group E, 2. round

Match Team Statistics

Match No. 18

P.R. of China 27 - 18 Guinea

(17 - 8) (10 - 10)

25.6.2026. 18:30

Attendance: 2500

Jinzhong City Gymnasium

Referees: Bruna Correa (BRA) / Renata Correa (BRA)

Shot distribution by player

3 F. Pan 1 miss. 1/1	5 J. Zhang 1 miss. 1/1	6 Y. Fu 1/1 1/1	8 J. Liang 1/2 0/2	9 S. Zhang 1 post 1/1 1/1 1/1	10 J. Hu 0/1 1/1	15 Y. Yang 1/1
23 Y. Zheng	24 Y. Zhu	26 Y. Liu	37 X. Chen 1/1 1/1	39 Y. Sha 1/1 0/1	55 Y. Liu 0/1 2/2	56 Y. Cheng 2/3 1/3 0/1 1 post 1/1 lob

TOTAL

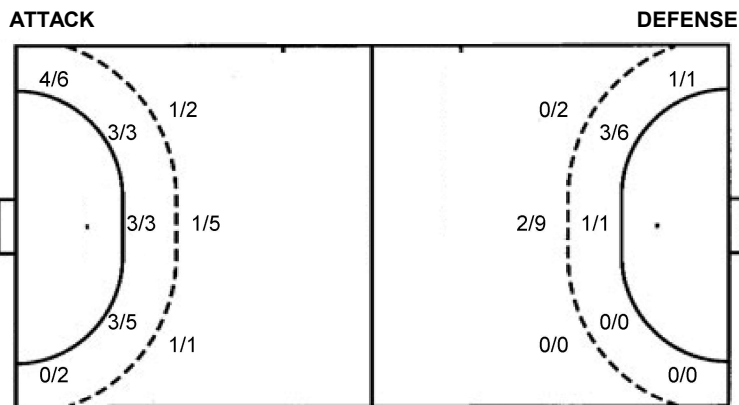
3/4	1/1	6/7
7/10	0/1	2/2
2/4	1/2	4/6

3 post 2 miss. 1/1 lob

Saves distribution goalkeepers

12 X. Wang 1/3 1/3 2/5	16 S. Huang 0/1 1/1 1/1	TOTAL 1/4 2/4 3/6	 2/3 1/4 2/3
--	---	-----------------------------------	-----------------------

Shots by position



7m penalties 5/7
Fastbreak 3/5
Breakthrough 3/4
Long dist. 0/0

7m penalties 2/2
Fastbreak 2/3
Breakthrough 7/10
Long dist. 0/0

Shooting statistics

Position	Goals	Sav.	Miss.	Post	Blk.	Total	%
Back (9m)	3	2	2	1	0	8	38
Line (6m)	9	1	0	1	0	11	82
Wing	4	3	0	1	0	8	50
7m penalties	5	2	0	0	0	7	71
Fastbreak	3	2	0	0	0	5	60
Breakthrough	3	1	0	0	0	4	75
Total	27	11	2	3	0	43	63

Jersey number Tot. Total shooting 6m 6m (line) shooting 9m 9m shooting Wng Wing shooting FB Fastbreak sh. 7m 7m penalty sh.
Brk. Breakthrough sh. LD Long distance sh. As. Assists PC Pass clear chance E7 Earned 7m pen. TF Technical faults St. Steals
2m 2m punishments C7. Committed 7m E2 Earned 2m pun. YC. Yellow cards R/B Red/Blue cards Blk. Blocks S Starting Line-up

Handball statistics and livescore by Toma-soft ltd (www.toma-soft.hr)



25th IHF Women's Junior World Championship 2026



Preliminary Round - Group E, 2. round

Match Team Statistics
Match No. 18

P.R. of China 27 - 18 Guinea
(17 - 8) (10 - 10)

25.6.2026. 18:30
Attendance: 2500
Jinzhong City Gymnasium

Referees: Bruna Correa (BRA) / Renata Correa (BRA)

Guinea

Players		Goals / shots									Attack				Def.			Penalties			TP				
#	Surname and name	S	Tot.	%	9m	6m	Wing	7m	FB	Brk.	LD	As.	PC	E7	E2	TF	St.	C7	Blk	YC	2m	R	B		
1	CAMARA Mama Adama	S										1													17:52
2	CAMARA Mabinty Delmaya	S	2/6	33	0/4			2/2					1		1	4									55:39
3	SOKPO Edite Ablavy		3/3	100		2/2	1/1									1									26:50
5	DIALLO Aissatou	S	3/7	43	0/3	0/1				3/3		2	1			4		2							49:22
6	KOLIE Celestine																								
7	RACINE DIALLO Maellie Hawa		2/5	40	1/1	0/1				1/3				2	2	3									41:35
8	SOUMAH Fatoumata Naby	S	1/3	33					0/1	1/2						4	1								39:14
9	DIALLO Mariama																	1							11:56
10	KEITA Nahan																								
11	MANSARE Yarie	S	3/4	75	0/1				2/2	1/1						3	1	2							33:06
12	KEITA Fatou	S														1									8:42
22	SOUMAH Aminata	S	3/5	60	1/2	2/3						1				3		1			1				53:24
23	RACINE DIALLO Jade Habie																								
26	DIALLO Mariame																1								6:05
29	DIABY Saran		1/1	100						1/1						1		1				1			34:07
78	DIARRA Boutie																								42:08
	Team / bench																								
	TOTAL		18/34	53	2/11	4/7	1/1	2/2	2/3	7/10	0/0	4	2	2	3	24	3	7	0	0	2	0	0		

Goalkeepers		Saves / shots								
#	Surname and name	Tot.	%	9m	6m	Wing	7m	FB	Brk.	LD
1	CAMARA Mama Adama	3/15	20	1/1	1/6	0/1	1/3	0/2	0/2	
78	DIARRA Boutie	8/23	35	1/4	0/4	3/6	1/4	2/3	1/2	
	TOTAL	11/38	29	2/5	1/10	3/7	2/7	2/5	1/4	0/0

Coach: **Titi Clementine Mara**

Number of attacks: 57, Efficiency: 32%, Average Duration: 32.93 seconds

Attack by type of defense

	Shots	9m	6m	Wing	TF	E7	E2
On def. 6-0	12/27	2/11	2/5	1/1	24	2	3
Fastbreak	2/3				0	0	0

Defense by type

	Total	9m	6m	Wing	Stl.	C7	2m
Def. 6-0	10/18	3/6	3/4	3/6	2	4	0
Def. 5-1	7/10	0/2	4/4	1/2	1	3	0
Fastbreak	3/5				0	0	2

Attack with superiority / minority / goalkeeper out

	Attack				Reaction		
	Att.	Eff.	Shots	TF	FB	LD	Tot.
6 on 6	47	32%	15/28	19			
5 on 6	4	0%	0/1	3			
6 on 5	6	50%	3/4	2			

Player superiority / GK out counted at the end of attack (in case it changes during attack)

Defense with superiority / minority / goalkeeper out

	Attack				Reaction		
	Att.	Eff.	Shots	TF	FB	LD	Tot.
7 on 6 (GK out)	1	0%	0/0	1	1/1	0/0	1/1
6 on 6 (GK out)	5	40%	2/2	3	0/0	0/0	0/0
6 on 6	46	46%	21/35	11			
6 on 5	5	80%	4/5	0			

Numbers show attacking numbers of opponent. Lower efficiency of opponent means better defense of this team

Jersey number Tot. Total shooting 6m 6m (line) shooting 9m 9m shooting Wng Wing shooting FB Fastbreak sh. 7m 7m penalty sh.
Brk. Breakthrough sh. LD Long distance sh. As. Assists PC Pass clear chance E7 Earned 7m pen. TF Technical faults St. Steals
2m 2m punishments C7. Committed 7m E2 Earned 2m pun. YC. Yellow cards R/B Red/Blue cards Blk. Blocks S Starting Line-up

Handball statistics and livescore by Toma-soft ltd (www.toma-soft.hr)



25th IHF Women's Junior World Championship 2026



Preliminary Round - Group E, 2. round

Match Team Statistics
Match No. 18

P.R. of China 27 - 18 Guinea
(17 - 8) (10 - 10)

25.6.2026. 18:30
Attendance: 2500
Jinzhong City Gymnasium

Referees: Bruna Correa (BRA) / Renata Correa (BRA)

Shot distribution by player

2 M. Camara

		0/2
1/1		1/1
0/1	0/1	

3 E. Sokpo

1/1		2/2

5 A. Diallo

2/2		
		0/1
0/1	0/1	1/1

1 block

6 C. Kolie

7 M. Racine Diallo

0/1		
0/1		1/1
1/1		

1 miss.

8 F. Soumah

		1/1

1 post 1 miss.

9 M. Diallo

10 N. Keita

11 Y. Mansare

1/1		
	0/1	1/1
	1/1	

12 F. Keita

22 A. Soumah

		1/1
1/2		
1/2		

23 J. Racine Diallo

26 M. Diallo

29 S. Diaby

		1/1

TOTAL

3/4		1/3
2/4	0/1	3/4
3/6	1/3	5/5

1 post 2 miss. 1 block

Saves distribution goalkeepers

1 M. Camara

0/1		1/5
1/6		
	0/1	1/2

78 B. Diarra

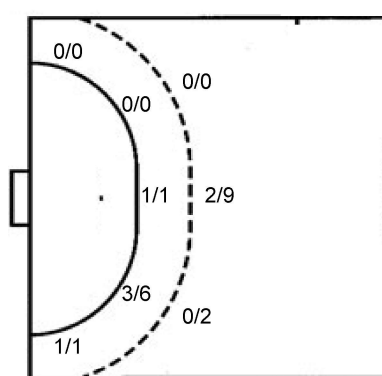
1/3	0/1	0/2
2/4	1/1	0/2
2/4	1/1	1/4

TOTAL

1/4	0/1	1/7
3/10	1/1	0/2
2/4	1/2	2/6

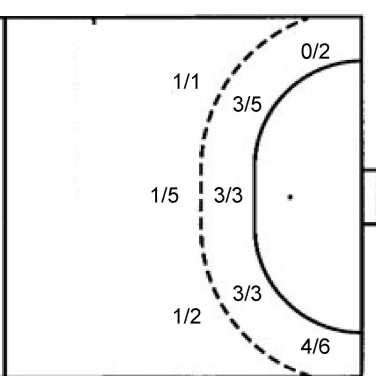
Shots by position

ATTACK



7m penalties 2/2
Fastbreak 2/3
Breakthrough 7/10
Long dist. 0/0

DEFENSE



7m penalties 5/7
Fastbreak 3/5
Breakthrough 3/4
Long dist. 0/0

Shooting statistics

Position	Goals	Sav.	Miss.	Post	Blk.	Total	%
Back (9m)	2	8	0	0	1	11	18
Line (6m)	4	3	0	0	0	7	57
Wing	1	0	0	0	0	1	100
7m penalties	2	0	0	0	0	2	100
Fastbreak	2	0	0	1	0	3	67
Breakthrough	7	1	2	0	0	10	70
Total	18	12	2	1	1	34	53

Jersey number Tot. Total shooting 6m 6m (line) shooting 9m 9m shooting Wng Wing shooting FB Fastbreak sh. 7m 7m penalty sh.
Brk. Breakthrough sh. LD Long distance sh. As. Assists PC Pass clear chance E7 Earned 7m pen. TF Technical faults St. Steals
2m 2m punishments C7. Committed 7m E2 Earned 2m pun. YC. Yellow cards R/B Red/Blue cards Blk. Blocks S Starting Line-up

Handball statistics and livescore by Toma-soft ltd (www.toma-soft.hr)



25th IHF Women's Junior World Championship 2026



Preliminary Round - Group E, 2. round

Match Team Statistics

Match No. 18

P.R. of China 27 - 18 Guinea

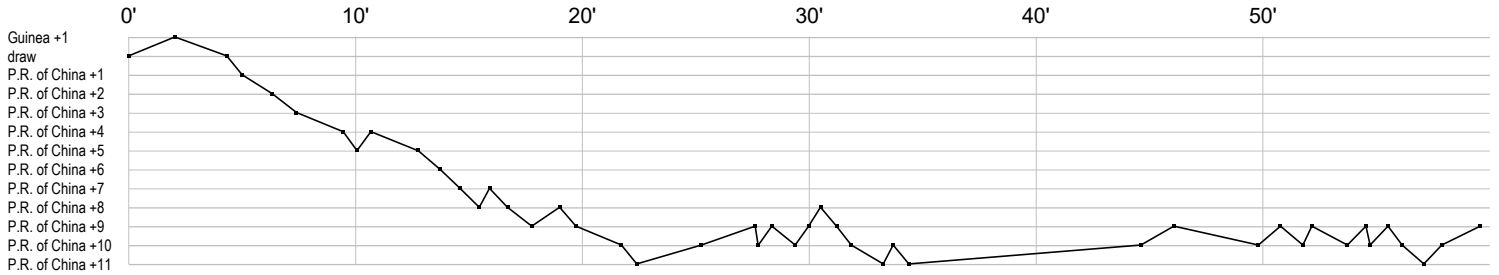
(17 - 8) (10 - 10)

25.6.2026. 18:30

Attendance: 2500

Jinzhong City Gymnasium

Referees: Bruna Correa (BRA) / Renata Correa (BRA)



P.R. of China

3 Pan F	t t			g i a t t				f	
5 Zhang J					g			t f	
6 Fu Y	e g g fg								
8 Liang J	ff g a a p					g a t	p t f		g t
9 Zhang S			g g f ei a g g			a	p t		g p g c g t
10 Hu J				f t e p g					
12 Wang X			s s	r r r r r s r		s t s	s p s	r s r	s r r r r sr r
15 Yang Y	e		g						
16 Huang S	r	s	r	ar s r					
23 Zheng Y				a a p		2c	b p	t	ar
24 Zhu Y				a		t			e
26 Liu Y				e					e x
37 Chen X				g 2		g a			
39 Sha Y		b	g		f			f	
55 Liu Y							f		g g
56 Cheng Y		g b g	f	g	f	g g	f f		f a

Guinea

1 Camara M	a ss r r r r sr r			r r r r r r r					
2 Camara M	t f t			t f t		g		f f i	g p
3 Sokpo E							t	g	g
5 Diallo A	pc	a t t	g		g g	f	f	t f t	c a f
6 Kolie C									
7 Racine Diallo				fif	t ei	t	g f t		g e
8 Soumah F	t t	t	g	f			bf		t
9 Diallo M									c
10 Keita N									
11 Mansare Y	b g c		t		gc t	g	t f		
12 Keita F			t						
22 Soumah A	t	g	c2	t	f	t			a g f g
23 Racine Diallo									
26 Diallo M									b
29 Diaby S				2	g c	t			
78 Diarra B				s r r r	s r r	r r r r	s ss	s	r r s r r r r

In game	g Goal scored	f Missed shot	a Assist	t Technical faults	b Steal
2 2min suspension	e Earned 7m	c Committed 7m	y Yellow card	r Red Card	k Blue card
i Earned 2min.	x Block	4 4min suspension	p Pass for clear chance	s Saved shot	r Received goal