



# 25th IHF Women's Junior World Championship 2026



Preliminary Round - Group F, 1. round

Match Team Statistics

## Czechia 44 - 21 USA

24.6.2026. 14:00

Match No. 12

(23 - 8) (21 - 13)

Attendance: 225

Jinzhong City Gymnasium

Referees: Moustafa Abdelkarim (EGY) / Ahmed Shawky Kedis (EGY)

### Czechia

#	Surname and name	S	Goals / shots							Attack				Def.		Penalties			TP						
			Tot.	%	9m	6m	Wing	7m	FB	Brk.	LD	As.	PC	E7	E2	TF	St.	C7		Blk	YC	2m	R	B	
2	KRAPKOVA Michaela	S	2/4	50			0/1		2/3															40:18	
5	RAMPOVA Claudia	S	7/11	64		1/1	0/1		6/8	0/1				1	1	1	3							36:13	
6	PAZDEROVA Tereza		2/4	50			1/2		1/2															35:44	
7	VRBKOVA Viktorie		6/9	67	2/3	2/2								2/4					1					32:40	
9	CHALOUPKOVA Anna		1/2	50		1/1		0/1						3	1				3	1		1		23:13	
10	MATEJKOVA Regina	S	2/3	67										2/3					1	1				34:34	
11	HOLENAKOVA Melisa	S	5/5	100		1/1		1/1	1/1	2/2				2					1	1				23:12	
12	CHVATALOVA Adela													2										27:32	
13	PEJSOVA Viktorie	S	4/4	100	2/2	1/1				1/1				7	1							1		29:28	
19	POSPISILOVA Tereza		4/5	80		4/5													1	1				38:50	
20	BABOROVSKA Natálie																								
21	POLANKOVA Markéta		1/1	100	1/1									1										13:34	
22	FILIPKOVA Tereza		8/10	80	0/1	3/3		1/1	0/1	4/4				2	1	1	1	1				1		27:41	
25	KNEDLOVA Viktorie	S																						7:49	
26	CHODOUNSKA Anna		2/3	67		1/1			0/1	1/1				2								1		20:38	
27	BUCHTOVA Andrea	S												2										28:34	
	Team / bench																								
	TOTAL		44/61	72	5/7	14/15	1/4	2/3	10/16	12/16	0/0			19	6	3	4	9	11	3	4	0	4	0	0

#	Surname and name	Saves / shots								
		Tot.	%	9m	6m	Wing	7m	FB	Brk.	LD
12	CHVATALOVA Adela	6/19	32	3/9	1/2	2/3	0/2	0/1	0/2	
27	BUCHTOVA Andrea	10/18	56	6/11	0/1	2/2	0/1		2/3	
	TOTAL	16/37	43	9/20	1/3	4/5	0/3	0/1	2/5	0/0

Coach: Dušan Poloz

Number of attacks: 66, Efficiency: 67%, Average Duration: 21.35 seconds

### Attack by type of defense

	Shots	9m	6m	Wing	TF	E7	E2
On def. 6-0	29/39	5/7	11/12	1/4	9	3	4
Fastbreak	10/16				0	0	0

### Defense by type

	Total	9m	6m	Wing	Stl.	C7	2m
Def. 6-0	17/40	11/26	2/3	1/5	11	3	0
Fastbreak	1/1				0	0	4

### Attack with superiority / minority / goalkeeper out

	Attack				Reaction		
	Att.	Eff.	Shots	TF	FB	LD	Tot.
7 on 6 (GK out)	2	100%	2/2	0	0/0	0/0	0/0
6 on 6 (GK out)	2	50%	1/1	1	0/0	0/1	0/1
4 on 6 (GK out)	1	100%	1/1	0	0/0	0/0	0/0
6 on 6	53	66%	35/46	7			
6 on 5	8	63%	5/7	1			

Player superiority / GK out counted at the end of attack (in case it changes during attack)

### Defense with superiority / minority / goalkeeper out

	Attack				Reaction		
	Att.	Eff.	Shots	TF	FB	LD	Tot.
6 on 6	56	32%	18/35	21			
5 on 6	5	20%	1/4	1			
6 on 5	3	0%	0/2	1			
6 on 4	1	100%	1/1	0			
6 on 3	1	100%	1/1	0			

Numbers show attacking numbers of opponent. Lower efficiency of opponent means better defense of this team

# Jersey number Tot. Total shooting 6m 6m (line) shooting 9m 9m shooting Wng Wing shooting FB Fastbreak sh. 7m 7m penalty sh.  
 Brk. Breakthrough sh. LD Long distance sh. As. Assists PC Pass clear chance E7 Earned 7m pen. TF Technical faults St. Steals  
 2m 2m punishments C7. Committed 7m E2 Earned 2m pun. YC. Yellow cards R/B Red/Blue cards Blk. Blocks S Starting Line-up



# 25th IHF Women's Junior World Championship 2026



Preliminary Round - Group F, 1. round

## Match Team Statistics

Match No. 12

## Czechia 44 - 21 USA

(23 - 8) (21 - 13)

24.6.2026. 14:00

Attendance: 225

Jinzhong City Gymnasium

Referees: Moustafa Abdelkarim (EGY) / Ahmed Shawky Kedis (EGY)

### Shot distribution by player

#### 2 M. Krapková

0/1		
1/1	0/1	1/1

#### 5 C. Rampová

1/1		2/2
2/2		
0/1		2/2

2 post 1 miss.

#### 6 T. Pazderová

2/2	0/1	
	0/1	

#### 7 V. Vrbková

1/2		1/1
1/1		3/3

1 post 1 block

#### 9 A. Chaloupková

	1/1	
0/1		

#### 10 R. Matějková

1/1		0/1
1/1		

#### 11 M. Holeňáková

3/3		
2/2		

#### 13 V. Pejšová

		3/3
		1/1

#### 19 T. Pospíšilová

1/1		
2/2		1/1

1 miss.

#### 20 N. Baborovská


#### 21 M. Polanková

		1/1

#### 22 T. Filipková

		1/1
0/1		2/2
1/1		3/3

1 post 1/1 lob

#### 25 V. Knedlová


#### 26 A. Chodounská

1/1		1/1
0/1		

### TOTAL

5/5	1/2	7/7
7/11	0/1	3/4
8/10	0/1	12/12

4 post 2 miss. 1 block 1/1 lob

### Saves distribution goalkeepers

#### 12 A. Chvátalová

	1/1	0/1
2/3		2/3
0/1	0/2	1/8

#### 27 A. Buchtová

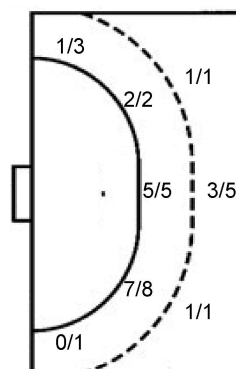
1/3		1/2
3/3		
1/4	2/2	2/4

#### TOTAL

1/3	1/1	1/3
5/6		2/3
1/5	2/4	3/12

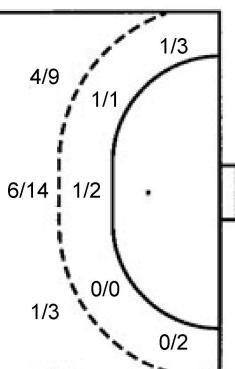
### Shots by position

#### ATTACK



7m penalties	2/3
Fastbreak	10/16
Breakthrough	12/16
Long dist.	0/0

#### DEFENSE



7m penalties	3/3
Fastbreak	1/1
Breakthrough	3/6
Long dist.	0/1

### Shooting statistics

Position	Goals	Sav.	Miss.	Post	Blk.	Total	%
Back (9m)	5	1	0	0	1	7	71
Line (6m)	14	0	1	0	0	15	93
Wing	1	2	1	0	0	4	25
7m penalties	2	1	0	0	0	3	67
Fastbreak	10	4	0	2	0	16	63
Breakthrough	12	2	0	2	0	16	75
<b>Total</b>	<b>44</b>	<b>10</b>	<b>2</b>	<b>4</b>	<b>1</b>	<b>61</b>	<b>72</b>

# Jersey number Tot. Total shooting 6m 6m (line) shooting 9m 9m shooting Wng Wing shooting FB Fastbreak sh. 7m 7m penalty sh.  
 Brk. Breakthrough sh. LD Long distance sh. As. Assists PC Pass clear chance E7 Earned 7m pen. TF Technical faults St. Steals  
 2m 2m punishments C7. Committed 7m E2 Earned 2m pun. YC. Yellow cards R/B Red/Blue cards Blk. Blocks S Starting Line-up

Handball statistics and livescore by Toma-soft ltd (www.toma-soft.hr)





# 25th IHF Women's Junior World Championship 2026



Preliminary Round - Group F, 1. round

## Match Team Statistics

Match No. 12

## Czechia 44 - 21 USA

(23 - 8) (21 - 13)

24.6.2026. 14:00

Attendance: 225

Jinzhong City Gymnasium

Referees: Moustafa Abdelkarim (EGY) / Ahmed Shawky Kedis (EGY)

### Shot distribution by player

2 R. Varytimiadou


3 D. Sanchez


4 H. Penszki

1/1		0/1
		1/1

6 I. Hannevik

		1/1

1 miss. 1 block

7 M. Tomlin

0/1		
		0/1

9 L. Poerschke

1/1	1/1	0/1

1 block

10 I. Da Cruz

0/2		0/1

1 miss.

11 H. Schlueter

1/2		

15 M. Doherty Dahllof

1/2		2/2
0/2		1/1
2/2	1/2	6/7

1 post 2 miss. 1 block

18 A. Schulz


19 L. Ready

1/1		

23 L. Braschoss

		0/1

44 L. Schlaepfer

	0/1	0/1
		1/1

66 Z. Chaouch


### TOTAL

2/3	0/1	2/3
1/6		1/3
4/5	2/4	9/12

1 post 4 miss. 3 block

### Saves distribution goalkeepers

1 J. Marques Molins


33 B. Coon

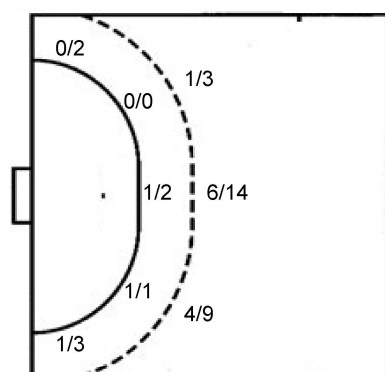
0/5	1/2	0/7
4/11	1/1	1/4
2/10	1/1	0/12

### TOTAL

0/5	1/2	0/7
4/11	1/1	1/4
2/10	1/1	0/12

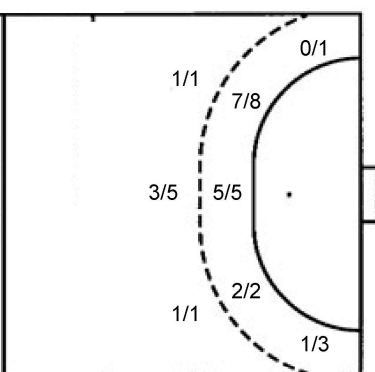
### Shots by position

#### ATTACK



7m penalties 3/3  
Fastbreak 1/1  
Breakthrough 3/6  
Long dist. 0/1

#### DEFENSE



7m penalties 2/3  
Fastbreak 10/16  
Breakthrough 12/16  
Long dist. 0/0

### Shooting statistics

Position	Goals	Sav.	Miss.	Post	Blk.	Total	%
Back (9m)	11	9	2	1	3	26	42
Line (6m)	2	1	0	0	0	3	67
Wing	1	4	0	0	0	5	20
7m penalties	3	0	0	0	0	3	100
Fastbreak	1	0	0	0	0	1	100
Breakthrough	3	2	1	0	0	6	50
<b>Total</b>	<b>21</b>	<b>16</b>	<b>3</b>	<b>1</b>	<b>3</b>	<b>44</b>	<b>48</b>

# Jersey number Tot. Total shooting 6m 6m (line) shooting 9m 9m shooting Wng Wing shooting FB Fastbreak sh. 7m 7m penalty sh.  
Brk. Breakthrough sh. LD Long distance sh. As. Assists PC Pass clear chance E7 Earned 7m pen. TF Technical faults St. Steals  
2m 2m punishments C7. Committed 7m E2 Earned 2m pun. YC. Yellow cards R/B Red/Blue cards Blk. Blocks S Starting Line-up

Handball statistics and livescore by Toma-soft ltd (www.toma-soft.hr)



# 25th IHF Women's Junior World Championship 2026



Preliminary Round - Group F, 1. round

## Match Team Statistics

Match No. 12

## Czechia 44 - 21 USA

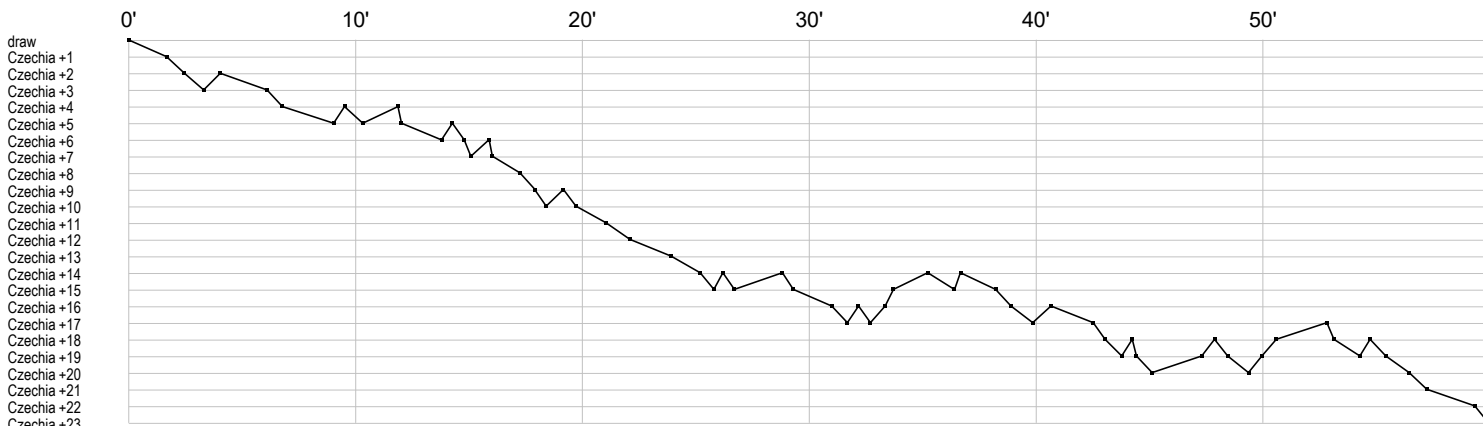
(23 - 8) (21 - 13)

24.6.2026. 14:00

Attendance: 225

Jinzhong City Gymnasium

Referees: Moustafa Abdelkarim (EGY) / Ahmed Shawky Kedis (EGY)



### Czechia

2 Krapková M	bg	f	t	f
5 Rampová C	f g g g b	b b g t g	f f f g g ei	
6 Pazderová T		g g	f	f
7 Vrbková V		g g 2	i f f	g bg f x g g i a x b
9 Chaloupková	f	bp	2c	a ba g b
10 Matějková R	c e		t g	g t t f
11 Holeňáková M	g at	g b g ga g		
12 Chvátalová A			r r r r r s sr ps r s s r r r r p r s r	
13 Pejšová V	a a g pa g	a ag	a t 2	g a
19 Pospišilová T	f	g g	x g	g c
20 Baborovská N			t g	p
21 Polanková M		i e g a	g g g p 2	g g f g g at f
22 Filipková T				
25 Knedlová V				
26 Chodounská	b	g	a	a f g
27 Buchtová A	s r s r r r r s a s s s r s r s			

### USA

1 Marques				
2 Varytmiadou	t c t		t	
3 Sanchez D				
4 Penszki H			g ei f	g
6 Hannevik I	t e	it	t g	e a t f f
7 Tomlin M		f		f c 2
9 Poerschke L		t g f		g t
10 Da Cruz I	t t t f f		a i bf a f a	
11 Schlueter H		f g		p t
15 Doherty	f g t f a t g g g g f t	f	t t g g b g p f p t t g f g g	g f g f f
18 Schulz A				t t
19 Ready L	c	g 2	2	2
23 Braschoss L		f		
33 Coon B	r r r s r r r r s r r r r r r r r r s r r r r r r s s s r s r r s r			
44 Schlaepfer L	f		b f g	t
66 Chaouch Z				

In game	<b>g</b> Goal scored	<b>f</b> Missed shot	<b>a</b> Assist	<b>t</b> Technical faults	<b>b</b> Steal
<b>2</b> 2min suspension	<b>e</b> Earned 7m	<b>c</b> Committed 7m	<b>y</b> Yellow card	<b>r</b> Red Card	<b>k</b> Blue card
<b>i</b> Earned 2min.	<b>x</b> Block	<b>4</b> 4min suspension	<b>p</b> Pass for clear chance	<b>s</b> Saved shot	<b>r</b> Received goal