



25th IHF Women's Junior World Championship 2026



Final Round, 5-6. place

Match Team Statistics

Match No. 114

Montenegro 34 - 28 Serbia

(19 - 13) (15 - 15)

5.7.2026. 13:45

Attendance: 3700

Jinzhong City Gymnasium

Referees: German Araujo (URU) / Nicolas Perdomo (URU)

Shot distribution by player

2 S. Andrijasević

0/1	1/1	

1 post

4 M. Dobrković

		1/1

7 N. Lekić

		1/1
1/1	2/2	

8 K. Kuzman

1/1		
		0/1

1 miss.

9 M. Ceklic

	0/1	1/1
	0/1	

10 B. Pelicić

2/2		

11 A. Guberinić

1/1		

13 N. Ramusović

2/2		1/1
2/2		1/1

17 E. Mitrović

		1/1
		0/2
3/3	0/1	4/4

1 post 1 miss. 1 block

20 K. Gasević

1/1		

23 I. Savić

		1/1
1/1		

2 post

24 M. Grujic

2/2		
1/1		

1 post

26 M. Knežević

2/2		

27 A. Orbović

		1/1

1 block

TOTAL

4/5	1/1	2/2
5/5	0/1	4/6
10/10	2/4	6/7

5 post 2 miss. 2 block

Saves distribution goalkeepers

1 T. Roncević

0/3	0/1	1/2
4/6		3/6
1/2	1/3	4/8

16 V. Zivković

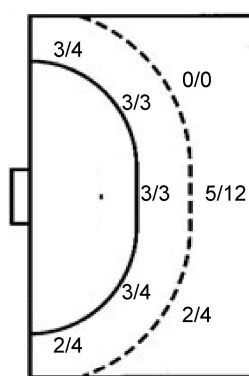
		0/2
		0/2
	0/1	0/1

TOTAL

0/3	0/1	1/4
4/6		3/8
1/2	1/4	4/9

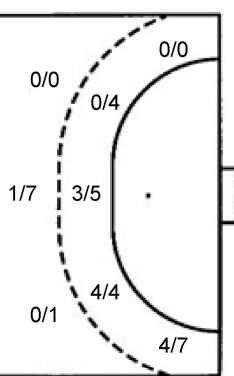
Shots by position

ATTACK



7m penalties 4/5
Fastbreak 0/1
Breakthrough 9/10
Long dist. 0/0

DEFENSE



7m penalties 4/5
Fastbreak 1/1
Breakthrough 6/10
Long dist. 5/8

Shooting statistics

Position	Goals	Sav.	Miss.	Post	Blk.	Total	%
Back (9m)	7	2	2	3	2	16	44
Line (6m)	9	1	0	0	0	10	90
Wing	5	1	0	2	0	8	63
7m penalties	4	1	0	0	0	5	80
Fastbreak	0	1	0	0	0	1	0
Breakthrough	9	1	0	0	0	10	90
Total	34	7	2	5	2	50	68

Jersey number Tot. Total shooting 6m 6m (line) shooting 9m 9m shooting Wng Wing shooting FB Fastbreak sh. 7m 7m penalty sh.
Brk. Breakthrough sh. LD Long distance sh. As. Assists PC Pass clear chance E7 Earned 7m pen. TF Technical faults St. Steals
2m 2m punishments C7. Committed 7m E2 Earned 2m pun. YC. Yellow cards R/B Red/Blue cards Blk. Blocks S Starting Line-up

Handball statistics and livescore by Toma-soft ltd (www.toma-soft.hr)



25th IHF Women's Junior World Championship 2026



Final Round, 5-6. place

Match Team Statistics
Match No. 114

Montenegro 34 - 28 Serbia
(19 - 13) (15 - 15)

5.7.2026. 13:45
Attendance: 3700
Jinzhong City Gymnasium

Referees: German Araujo (URU) / Nicolas Perdomo (URU)

Serbia

#	Surname and name	S	Goals / shots								Attack				Def.			Penalties			TP			
			Tot.	%	9m	6m	Wing	7m	FB	Brk.	LD	As.	PC	E7	E2	TF	St.	C7	Blk	YC		2m	R	B
8	MARINOVIĆ Tara																							8:56
9	ŽAKULA Sara																							25:42
10	PETKOVIĆ Ema	S	1/2	50		1/2																		11:48
11	NEDELJKOVIĆ Mia	S	5/6	83		1/1	1/2	2/2	1/1															36:58
12	GRUJIČIĆ Ivona	S	1/3	33																				48:23
13	JANKOVIĆ Lena	S	0/1	0	0/1																			17:43
15	RADOVIĆ Sara	S	3/8	38	1/4	0/2		1/1		1/1														28:57
18	JANKOVIĆ Tijana																							16:39
19	MILOSAVLJEVIĆ Leana		3/3	100		2/2																		11:15
22	OTAŠEVIĆ Milica	S	6/10	60		2/2		0/1		3/5	1/2	4	5	2										52:04
23	DUŠIĆ Tamara		1/3	33		0/2					1/1													33:25
26	TANOVIĆ Jana																							8:48
44	ĐEKIĆ Mia		0/1	0		0/1																		38:40
60	BULATOVIĆ Nikolina	S																						25:51
73	RANKOVIĆ Zorica		5/9	56	0/1		3/5			1/2	1/1													34:02
77	STANIĆ Lara		3/6	50	0/2	1/1		1/1		1/2														20:23
	Team / bench																							
	TOTAL		28/52	54	1/8	7/13	4/7	4/5	1/1	6/10	5/8	11	6	5	6	12	2	5	2	0	4	0	0	

#	Surname and name	Saves / shots								
		Tot.	%	9m	6m	Wing	7m	FB	Brk.	LD
12	GRUJIČIĆ Ivona	7/36	19	2/8	1/8	1/5	1/5	1/1	1/9	
26	TANOVIĆ Jana	0/5	0	0/1	0/2	0/1			0/1	
	TOTAL	7/41	17	2/9	1/10	1/6	1/5	1/1	1/10	0/0

Coach: Zoran Barbulović

Number of attacks: 60, Efficiency: 47%, Average Duration: 27.65 seconds

Attack by type of defense

	Shots	9m	6m	Wing	TF	E7	E2
On def. 6-0	18/36	1/8	7/11	4/7	12	5	6
Fastbreak	1/1				0	0	0

Defense by type

	Total	9m	6m	Wing	Stl.	C7	2m
Def. 6-0	29/43	7/16	8/9	5/8	2	5	0
Fastbreak	0/1				0	0	4

Attack with superiority / minority / goalkeeper out

	Attack				Reaction		
	Att.	Eff.	Shots	TF	FB	LD	Tot.
6 on 6 (GK out)	2	100%	2/2	0	0/0	0/0	0/0
6 on 6	43	37%	16/32	11			
7 on 5 (GK out)	1	0%	0/0	1	0/0	0/0	0/0
6 on 5 (GK out)	2	100%	2/2	0	0/0	0/0	0/0
6 on 5	9	67%	6/9	0			
5 on 5	2	100%	2/2	0			
6 on 4	1	0%	0/1	0			

Player superiority / GK out counted at the end of attack (in case it changes during attack)

Defense with superiority / minority / goalkeeper out

	Attack				Reaction		
	Att.	Eff.	Shots	TF	FB	LD	Tot.
7 on 6 (GK out)	27	52%	14/20	7	0/0	1/3	1/3
7 on 5 (GK out)	3	100%	3/3	0	0/0	0/0	0/0
6 on 6 (GK out)	6	50%	3/3	3	0/0	2/2	2/2
6 on 5 (GK out)	5	40%	2/4	1	0/0	1/1	1/1
5 on 6 (GK out)	1	0%	0/0	1	0/0	0/1	0/1
6 on 6	18	56%	10/14	4			
6 on 5	2	100%	2/2	0			

Numbers show attacking numbers of opponent. Lower efficiency of opponent means better defense of this team

Jersey number Tot. Total shooting 6m 6m (line) shooting 9m 9m shooting Wng Wing shooting FB Fastbreak sh. 7m 7m penalty sh.
Brk. Breakthrough sh. LD Long distance sh. As. Assists PC Pass clear chance E7 Earned 7m pen. TF Technical faults St. Steals
2m 2m punishments C7. Committed 7m E2 Earned 2m pun. YC. Yellow cards R/B Red/Blue cards Blk. Blocks S Starting Line-up

Handball statistics and livescore by Toma-soft ltd (www.toma-soft.hr)



25th IHF Women's Junior World Championship 2026



Final Round, 5-6. place

Match Team Statistics

Match No. 114

Montenegro 34 - 28 Serbia

(19 - 13) (15 - 15)

5.7.2026. 13:45

Attendance: 3700

Jinzhong City Gymnasium

Referees: German Araujo (URU) / Nicolas Perdomo (URU)

Shot distribution by player

8 T. Marinović

9 S. Žakula

10 E. Petković

	1/1	0/1

11 M. Nedeljković

1/1		3/4
1/1		

13 L. Janković

0/1		

15 S. Radović

1/1		1/1
		1/2

2 miss. 2 block

18 T. Janković

19 L. Milosavljević

1/1		2/2

22 M. Otašević

1/1		1/1
0/1		2/3
	1/1	1/1

1 post 1 miss.

23 T. Dušić

		0/1
		1/2

44 M. Đekić

		0/1

60 N. Bulatović

73 Z. Ranković

1/1	1/1	
0/1		1/2
	1/2	1/1

1 post

77 L. Stanić

0/1		1/1
1/2		1/1

1 miss.

TOTAL

3/3	1/1	4/5
2/6		5/8
1/2	4/5	7/11

2 post 4 miss. 2 block

Saves distribution goalkeepers

12 I. Grujičić

1/3	0/1	0/1
0/5	1/1	2/5
0/9	2/4	1/7

26 J. Tanović

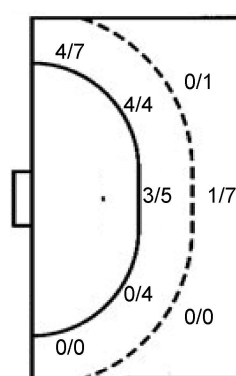
0/2		0/1
		0/1
0/1		

TOTAL

1/5	0/1	0/2
0/5	1/1	2/6
0/10	2/4	1/7

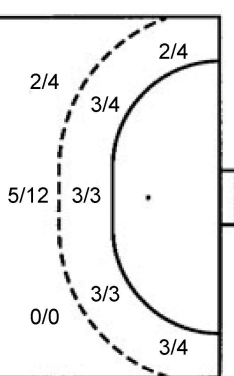
Shots by position

ATTACK



7m penalties 4/5
Fastbreak 1/1
Breakthrough 6/10
Long dist. 5/8

DEFENSE



7m penalties 4/5
Fastbreak 0/1
Breakthrough 9/10
Long dist. 0/0

Shooting statistics

Position	Goals	Sav.	Miss.	Post	Blk.	Total	%
Back (9m)	1	4	2	0	1	8	13
Line (6m)	7	4	1	0	1	13	54
Wing	4	2	0	1	0	7	57
7m penalties	4	1	0	0	0	5	80
Fastbreak	1	0	0	0	0	1	100
Breakthrough	6	3	0	1	0	10	60
Total	23	14	3	2	2	44	52

Jersey number Tot. Total shooting 6m 6m (line) shooting 9m 9m shooting Wng Wing shooting FB Fastbreak sh. 7m 7m penalty sh.
Brk. Breakthrough sh. LD Long distance sh. As. Assists PC Pass clear chance E7 Earned 7m pen. TF Technical faults St. Steals
2m 2m punishments C7. Committed 7m E2 Earned 2m pun. YC. Yellow cards R/B Red/Blue cards Blk. Blocks S Starting Line-up

Handball statistics and livescore by Toma-soft ltd (www.toma-soft.hr)

