



25th IHF Women's Junior World Championship 2026



Final Round, 25-26. place

Match Team Statistics

Match No. 112

Paraguay 22 - 27 Turkiye

(12 - 11) (10 - 16)

3.7.2026. 18:30

Attendance: 270

Jinzhong University

Gymnasium

Referees: Moustafa Abdelkarim (EGY) / Ahmed Shawky Kedis (EGY)

Shot distribution by player

4 M. Parra Corvalan

1/1	0/2	1/1
3/4		2/2

1 miss.

5 M. Bernal Villalba

6 L. Figueredo Vera

7 A. Almeida Galeano

	0/1	

10 V. Barrios Vazquez

		0/1
1/1		3/3

14 P. Santa Cruz

1/1		

19 K. Lopez Portillo

		1/1
1/1		

1 miss.

21 D. Mendez Caceres

	0/1	0/1
1/2		

1 block

26 S. Paredes Mujica

0/1		
		1/1

30 F. Ramirez Bernal

1/1		
	0/1	
		2/2

1 post

60 C. Lopez Rodas

		1/1

1/1 lob

77 L. Torres Chavez

0/1		
0/1		
	0/2	1/1

TOTAL

1/2	0/1	1/2
2/4	0/3	1/2
6/8	0/3	10/10

1 post 2 miss. 1 block 1/1 lob

Saves distribution goalkeepers

1 A. Perez

0/1		0/1
0/3		0/2
0/1		0/1

99 C. Ruiz Diaz

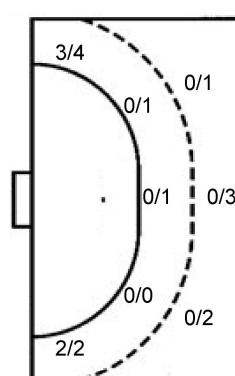
0/4		1/2
2/5	1/1	0/1
2/8	3/3	0/3

TOTAL

0/5		1/3
2/8	1/1	0/3
2/9	3/3	0/4

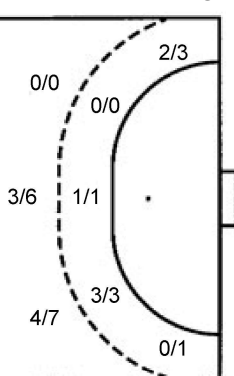
Shots by position

ATTACK



7m penalties 7/9
Fastbreak 0/0
Breakthrough 10/17
Long dist. 0/0

DEFENSE



7m penalties 3/4
Fastbreak 4/5
Breakthrough 7/8
Long dist. 0/0

Shooting statistics

Position	Goals	Sav.	Miss.	Post	Blk.	Total	%
Back (9m)	0	4	1	0	1	6	0
Line (6m)	0	2	0	0	0	2	0
Wing	5	1	0	0	0	6	83
7m penalties	7	1	0	1	0	9	78
Fastbreak	0	0	0	0	0	0	0
Breakthrough	10	6	1	0	0	17	59
Total	22	14	2	1	1	40	55

Jersey number Tot. Total shooting 6m 6m (line) shooting 9m 9m shooting Wng Wing shooting FB Fastbreak sh. 7m 7m penalty sh.
Brk. Breakthrough sh. LD Long distance sh. As. Assists PC Pass clear chance E7 Earned 7m pen. TF Technical faults St. Steals
2m 2m punishments C7. Committed 7m E2 Earned 2m pun. YC. Yellow cards R/B Red/Blue cards Blk. Blocks S Starting Line-up

Handball statistics and livescore by Toma-soft ltd (www.toma-soft.hr)



25th IHF Women's Junior World Championship 2026



Final Round, 25-26. place

Match Team Statistics
Match No. 112

Paraguay 22 - 27 Turkiye

(12 - 11) (10 - 16)

3.7.2026. 18:30
Attendance: 270
Jinzhong University
Gymnasium

Referees: Moustafa Abdelkarim (EGY) / Ahmed Shawky Kedis (EGY)

Turkiye

#	Surname and name	S	Goals / shots								Attack					Def.			Penalties			TP						
			Tot.	%	9m	6m	Wing	7m	FB	Brk.	LD	As.	PC	E7	E2	TF	St.	C7	Bik	YC	2m		R	B				
2	KAHRAMAN Aylin Meryem		2/3	67	2/2			0/1										1	1									3:46
3	BOZOVA Seval	S	1/1	100		1/1												2			1							32:15
5	YÜKSEL İlayda																											12:09
7	ÇINAR Kübra Nur		1/1	100		1/1																						42:22
11	DAGLI Sudenaz	S	0/2	0			0/1			0/1					1		1	1										15:34
13	HÜZMELİ Ela		4/4	100			2/2		2/2						1	1												46:38
14	SÖNMEZ Bugu		3/4	75	2/3					1/1					1	1												33:09
23	SEVEN Buket	S	8/8	100				2/2	2/2	4/4					4													48:56
28	DURDU Sümeyye		0/1	0			0/1								1													29:35
32	ÖZ Siddika	S	1/1	100		1/1									1													13:25
38	ÖZTÜRK Azra		0/1	0	0/1																							10:46
41	DIKME Gazel		4/7	57	1/3			1/1	0/1	2/2					1		1											30:44
45	YILMAZ Betül	S																										15:40
61	KESKIN Sude																											42:55
63	KARAGÖZLÜ Helin Su	S	1/2	50	0/1	1/1																						13:25
71	MUHÇU Hande	S	2/3	67	2/3																							28:41
	Team / bench																											
	TOTAL		27/38	71	7/13	4/4	2/4	3/4	4/5	7/8	0/0				9	3	4	3	13	6	9	1	0	4	0	0		

#	Surname and name	Saves / shots								
		Tot.	%	9m	6m	Wing	7m	FB	Brk.	LD
45	YILMAZ Betül	4/12	33	2/2	1/1	0/2	1/4		0/3	
61	KESKIN Sude	10/24	42	2/2	1/1	1/4	0/4		6/13	
	TOTAL	14/36	39	4/4	2/2	1/6	1/8	1/0	6/16	0/0

Coach: David Ginesta Montes

Number of attacks: 51, Efficiency: 53%, Average Duration: 22.57 seconds

Attack by type of defense

	Shots	9m	6m	Wing	TF	E7	E2
On def. 6-0	1/1	0/0	1/1	0/0	1	0	0
On def. 5-1	19/27	7/13	3/3	2/3	12	4	3
Fastbreak	4/5				0	0	0

Defense by type

	Total	9m	6m	Wing	Stl.	C7	2m
Def. 6-0	14/30	0/6	0/2	5/6	6	9	0
Fastbreak	0/0				0	0	4

Attack with superiority / minority / goalkeeper out

	Attack				Reaction		
	Att.	Eff.	Shots	TF	FB	LD	Tot.
7 on 6 (GK out)	1	100%	1/1	0	0/0	0/0	0/0
6 on 6 (GK out)	4	100%	4/4	0	0/0	0/0	0/0
6 on 6	41	49%	20/29	12			
6 on 5 (GK out)	1	0%	0/1	0	0/0	0/0	0/0
6 on 5	2	50%	1/2	0			
5 on 5	1	100%	1/1	0			
4 on 5	1	0%	0/0	1			

Player superiority / GK out counted at the end of attack (in case it changes during attack)

Defense with superiority / minority / goalkeeper out

	Attack				Reaction		
	Att.	Eff.	Shots	TF	FB	LD	Tot.
7 on 6 (GK out)	1	0%	0/0	1	0/0	0/0	0/0
6 on 6 (GK out)	1	100%	1/1	0	0/0	0/0	0/0
6 on 5 (GK out)	1	0%	0/0	1	0/0	0/0	0/0
6 on 4 (GK out)	1	100%	1/1	0	0/0	0/0	0/0
6 on 6	41	41%	17/26	15			
6 on 5	4	50%	2/4	0			
5 on 5	2	50%	1/2	0			

Numbers show attacking numbers of opponent. Lower efficiency of opponent means better defense of this team

Jersey number Tot. Total shooting 6m 6m (line) shooting 9m 9m shooting Wng Wing shooting FB Fastbreak sh. 7m 7m penalty sh.
Brk. Breakthrough sh. LD Long distance sh. As. Assists PC Pass clear chance E7 Earned 7m pen. TF Technical faults St. Steals
2m 2m punishments C7. Committed 7m E2 Earned 2m pun. YC. Yellow cards R/B Red/Blue cards Blk. Blocks S Starting Line-up



25th IHF Women's Junior World Championship 2026



Final Round, 25-26. place

Match Team Statistics

Match No. 112

Paraguay 22 - 27 Turkiye

(12 - 11) (10 - 16)

3.7.2026. 18:30

Attendance: 270

Jinzhong University

Gymnasium

Referees: Moustafa Abdelkarim (EGY) / Ahmed Shawky Kedis (EGY)

Shot distribution by player

2 A. Kahraman

1/1	0/1	1/1

3 S. Bozova

		1/1

5 I. Yüksel

7 K. Çınar

		1/1

11 S. Dağlı

0/1		

1 miss.

13 E. Hüzmele

1/1		1/1
		1/1
1/1		

14 B. Sönmez

2/2		
1/1	0/1	

23 B. Seven

3/3		1/1
2/2		
2/2		

28 S. Durdu

		0/1

32 S. Öz

1/1		

38 A. Öztürk

0/1		

41 G. Dikme

1/1		
1/3		
1/1	0/1	1/1

63 H. Karagözü

1/1		

1 miss.

71 H. Muhcu

	0/1	2/2

TOTAL

5/5		2/3
6/8	0/1	3/3
7/9	0/3	4/4

2 miss.

Saves distribution goalkeepers

45 B. Yılmaz

	1/1	1/2
1/2		1/2
0/1		0/3

61 S. Keskin

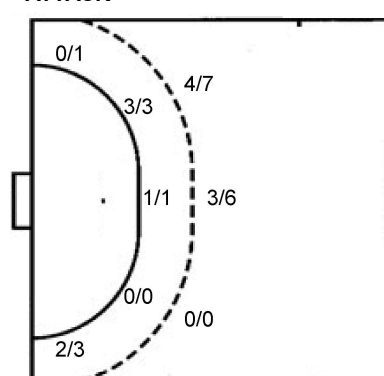
1/2		
1/2	3/3	
2/7	3/3	0/7

TOTAL

1/2	1/1	1/2
2/4	3/3	1/2
2/8	3/3	0/10

Shots by position

ATTACK



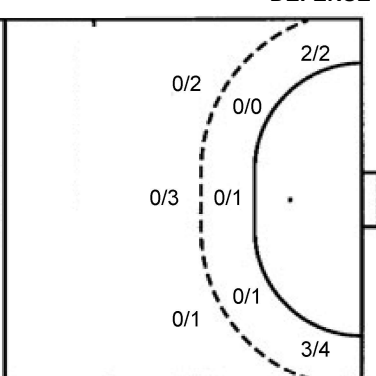
7m penalties 3/4

Fastbreak 4/5

Breakthrough 7/8

Long dist. 0/0

DEFENSE



7m penalties 7/9

Fastbreak 0/0

Breakthrough 10/17

Long dist. 0/0

Shooting statistics

Position	Goals	Sav.	Miss.	Post	Blk.	Total	%
Back (9m)	7	5	1	0	0	13	54
Line (6m)	4	0	0	0	0	4	100
Wing	2	2	0	0	0	4	50
7m penalties	3	1	0	0	0	4	75
Fastbreak	4	1	0	0	0	5	80
Breakthrough	7	0	1	0	0	8	88
Total	27	9	2	0	0	38	71

Jersey number Tot. Total shooting 6m 6m (line) shooting 9m 9m shooting Wng Wing shooting FB Fastbreak sh. 7m 7m penalty sh.
 Brk. Breakthrough sh. LD Long distance sh. As. Assists PC Pass clear chance E7 Earned 7m pen. TF Technical faults St. Steals
 2m 2m punishments C7. Committed 7m E2 Earned 2m pun. YC. Yellow cards R/B Red/Blue cards Blk. Blocks S Starting Line-up

Handball statistics and livescore by Toma-soft ltd (www.toma-soft.hr)

