



25th IHF Women's Junior World Championship 2026



Final Round, 23-24. place

Match Team Statistics
Match No. 105

Algeria 23 - 40 Faroe Islands
(15 - 23) (8 - 17)

3.7.2026. 11:45
Attendance: 120
Zhongdu Campus
Gymnasium

Referees: German Araujo (URU) / Nicolas Perdomo (URU)

Algeria

#	Surname and name	S	Goals / shots									Attack				Def.			Penalties				TP					
			Tot.	%	9m	6m	Wing	7m	FB	Brk.	LD	As.	PC	E7	E2	TF	St.	C7	Blk	YC	2m	R		B				
1	BOUSSEDER Zineb															1											34:31	
2	BOUALEM Mattilda Aya	S	1/1	100		1/1										1											25:31	
5	YELLES Racha		0/2	0	0/1						0/1				1		1	1	1		1						8:59	
6	SID Amira		0/5	0	0/3				0/1		0/1							2	1								23:17	
15	HAMMIDECHE Maroua		3/6	50	1/2	0/1					2/3				2			1									22:44	
18	TAIR Thalya	S	2/2	100			2/2											1						1			29:10	
19	SAHLI Amel	S													1	2			2		1			1			39:46	
22	DJERMOULI Louiza	S																									12:27	
24	ZEDIRI Meissa		2/3	67		0/1	1/1		1/1					1				2	1								44:09	
27	BERKANI Lylia	S	9/14	64	5/8			1/2		3/4				2			1	3			1						39:03	
28	AYA Amri	S	1/1	100			1/1																				29:51	
30	MESTOURI-THEODORE Timea		1/1	100			1/1											1									29:36	
31	MANSOURI Kinda		0/1	0	0/1													2									8:27	
69	LAKRAFED Jihane		3/7	43		2/5											2		1		2						34:29	
92	DJAIDER Malak	S	1/2	50	1/1					0/1				2		1		3		1							25:40	
99	KHAMTACHE Marwa Khatima																										11:59	
	Team / bench																											
	TOTAL		23/45	51	7/16	3/7	4/5	2/4	0/0	6/11	1/2	7	4	4	2	20	3	5	1	0	2	0	0	0	0	0		

#	Surname and name	Saves / shots								
		Tot.	%	9m	6m	Wing	7m	FB	Brk.	LD
1	BOUSSEDER Zineb	6/24	25	1/1	0/2	1/3	1/4	0/5	3/9	
22	DJERMOULI Louiza	1/11	9	0/1	0/2	1/6	0/1		0/1	
99	KHAMTACHE Marwa Khatima	2/11	18		0/1	1/4		0/1	1/5	
	TOTAL	9/46	20	1/2	0/5	3/13	1/5	0/6	4/15	0/0

Coach: Ait Ouarab Mourad

Number of attacks: 63, Efficiency: 37%, Average Duration: 28.43 seconds

Attack by type of defense

	Shots	9m	6m	Wing	TF	E7	E2
On def. 6-0	20/39	7/16	3/7	4/5	20	4	2
Fastbreak	0/0				0	0	0

Defense by type

	Total	9m	6m	Wing	Stl.	C7	2m
Def. 6-0	28/38	1/3	6/6	10/14	3	5	0
Fastbreak	6/6				0	0	2

Attack with superiority / minority / goalkeeper out

	Attack				Reaction		
	Att.	Eff.	Shots	TF	FB	LD	Tot.
6 on 6 (GK out)	2	50%	1/2	0	0/0	1/1	1/1
6 on 6	56	34%	19/37	19			
6 on 5	4	50%	2/3	1			
5 on 6	1	100%	1/1	0			

Player superiority / GK out counted at the end of attack (in case it changes during attack)

Defense with superiority / minority / goalkeeper out

	Attack				Reaction		
	Att.	Eff.	Shots	TF	FB	LD	Tot.
7 on 6 (GK out)	39	67%	26/30	9	0/0	1/1	1/1
6 on 6 (GK out)	3	67%	2/3	0	0/0	0/0	0/0
6 on 6	18	50%	9/12	6			
7 on 5 (GK out)	4	75%	3/3	1	0/0	0/0	0/0

Numbers show attacking numbers of opponent. Lower efficiency of opponent means better defense of this team

Jersey number Tot. Total shooting 6m 6m (line) shooting 9m 9m shooting Wng Wing shooting FB Fastbreak sh. 7m 7m penalty sh.
Brk. Breakthrough sh. LD Long distance sh. As. Assists PC Pass clear chance E7 Earned 7m pen. TF Technical faults St. Steals
2m 2m punishments C7. Committed 7m E2 Earned 2m pun. YC. Yellow cards R/B Red/Blue cards Blk. Blocks S Starting Line-up

Handball statistics and livescore by Toma-soft ltd (www.toma-soft.hr)



25th IHF Women's Junior World Championship 2026



Final Round, 23-24. place

Match Team Statistics

Match No. 105

Algeria 23 - 40 Faroe Islands

(15 - 23) (8 - 17)

3.7.2026. 11:45

Attendance: 120

Zhongdu Campus

Gymnasium

Referees: German Araujo (URU) / Nicolas Perdomo (URU)

Shot distribution by player

2 M. Boualem

	1/1	

5 R. Yelles

	0/1	0/1

6 A. Sid

		0/1
0/2		

2 miss.

15 M. Hammideche

		1/1
1/2		1/1

1 post 1 miss.

18 T. Tair

1/1		
		1/1

19 A. Sahli

24 M. Zediri

2/3		

27 L. Berkani

2/3	1/1	2/2
1/1		1/1
1/1		1/1

3 miss. 1 block

28 A. Aya

		1/1

30 T.

		1/1

Mestouri-Theodore

31 K. Mansouri

1 block

69 J. Lakrafed

		1/1
	1/1	0/1
		1/2

2 miss.

92 M. Djaider

		0/1
1/1		

TOTAL

3/4	2/2	3/4
1/3	1/1	2/4
5/7	0/1	6/8

1 post 8 miss. 2 block

Saves distribution goalkeepers

1 Z. Bousseder

1/2	1/1	0/2
3/5		0/2
1/8	0/2	0/2

22 L. Djermouli

0/1		
1/1		
0/2		0/5

99 M. Khamtache

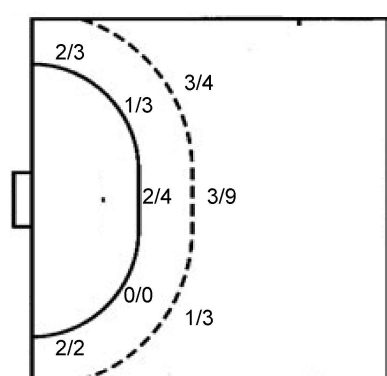
0/1		
1/1		0/1
0/3	0/1	1/3

TOTAL

1/4	1/1	0/2
5/7		0/3
1/13	0/3	1/10

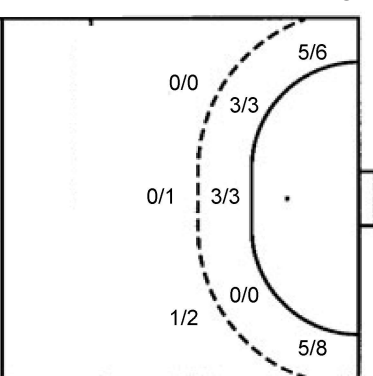
Shots by position

ATTACK



7m penalties 2/4
Fastbreak 0/0
Breakthrough 6/11
Long dist. 1/2

DEFENSE



7m penalties 4/5
Fastbreak 6/6
Breakthrough 11/15
Long dist. 2/3

Shooting statistics

Position	Goals	Sav.	Miss.	Post	Blk.	Total	%
Back (9m)	7	4	3	0	2	16	44
Line (6m)	3	2	2	0	0	7	43
Wing	4	1	0	0	0	5	80
7m penalties	2	2	0	0	0	4	50
Fastbreak	0	0	0	0	0	0	0
Breakthrough	6	2	2	1	0	11	55
Total	22	11	7	1	2	43	51

Jersey number Tot. Total shooting 6m 6m (line) shooting 9m 9m shooting Wng Wing shooting FB Fastbreak sh. 7m 7m penalty sh.
Brk. Breakthrough sh. LD Long distance sh. As. Assists PC Pass clear chance E7 Earned 7m pen. TF Technical faults St. Steals
2m 2m punishments C7. Committed 7m E2 Earned 2m pun. YC. Yellow cards R/B Red/Blue cards Blk. Blocks S Starting Line-up



25th IHF Women's Junior World Championship 2026



Final Round, 23-24. place

Match Team Statistics

Match No. 105

Algeria 23 - 40 Faroe Islands

(15 - 23) (8 - 17)

3.7.2026. 11:45

Attendance: 120

Zhongdu Campus

Gymnasium

Referees: German Araujo (URU) / Nicolas Perdomo (URU)

Shot distribution by player

2 R. Christiansen

1/1		1/1

3 H. Magnusardóttir

4 A. Jacobsen

1/2		1/1
1/1		

7 J. Johannensen

0/2		1/1
2/2	1/1	3/3

8 R. Joensen

	0/1	
1/1		2/2
4/4		2/3

1 block

9 R. Reginsdóttir

10 S. Eystberg

0/1		
1/1	1/1	1/1

11 A. Djurhuus

1/1		1/1
		1/1

13 K. Kjarbak

	1/1	

1/1 lob

15 M. Laursen

0/1		
1/1	1/1	

1 post 1 miss.

17 L. Ísfeld

1/2		1/1

18 A. Hansen

1/1		
0/1		
2/2		

2/2 lob

19 E. Í Stórustovu

	1/1	

22 M. Jansdóttir

		1/1

TOTAL

3/4	0/1	2/2
2/7	2/2	3/3
12/13	4/4	9/10

1 post 1 miss. 1 block 3/3 lob

Saves distribution goalkeepers

16 G. Á Neystabo

1/1		1/2
2/2		1/1
1/3	1/1	2/6

51 M. Beder

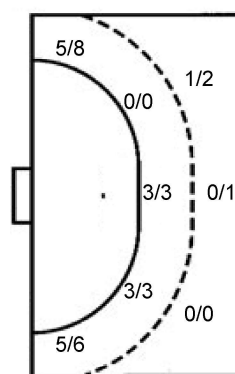
0/3	0/2	0/2
0/1		1/3
1/4		0/2

TOTAL

1/4	0/2	1/4
2/3		2/4
2/7	1/1	2/8

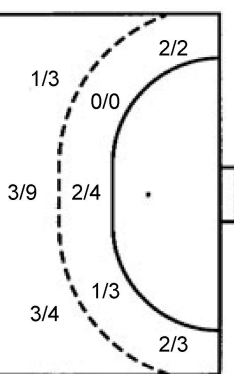
Shots by position

ATTACK



7m penalties 4/5
Fastbreak 6/6
Breakthrough 11/15
Long dist. 2/3

DEFENSE



7m penalties 2/4
Fastbreak 0/0
Breakthrough 6/11
Long dist. 1/2

Shooting statistics

Position	Goals	Sav.	Miss.	Post	Blk.	Total	%
Back (9m)	1	1	0	0	1	3	33
Line (6m)	6	0	0	0	0	6	100
Wing	10	3	0	1	0	14	71
7m penalties	4	1	0	0	0	5	80
Fastbreak	6	0	0	0	0	6	100
Breakthrough	11	4	0	0	0	15	73
Total	38	9	0	1	1	49	78

Jersey number Tot. Total shooting 6m 6m (line) shooting 9m 9m shooting Wng Wing shooting FB Fastbreak sh. 7m 7m penalty sh.
Brk. Breakthrough sh. LD Long distance sh. As. Assists PC Pass clear chance E7 Earned 7m pen. TF Technical faults St. Steals
2m 2m punishments C7. Committed 7m E2 Earned 2m pun. YC. Yellow cards R/B Red/Blue cards Blk. Blocks S Starting Line-up

Handball statistics and livescore by Toma-soft ltd (www.toma-soft.hr)

