



25th IHF Women's Junior World Championship 2026



Final Round, Semifinals

Match Team Statistics
Match No. 104

Denmark 30 - 29 Spain
(12 - 13) (13 - 12) (OT1: 5 - 4)

3.7.2026. 18:30
Attendance: 3800
Jinzhong City Gymnasium

Referees: Kristof Altmar (HUN) / Marton Horvath (HUN)

Denmark

Players		Goals / shots									Attack					Def.			Penalties				TP			
#	Surname and name	S	Tot.	%	9m	6m	Wing	7m	FB	Brk.	LD	As.	PC	E7	E2	TF	St.	C7	Blk	YC	2m	R	B			
2	ANTIVAKIS Cecillie Wiking	S	4/4	100		2/2	2/2																		68:01	
3	ANDERSEN Johanne Lasthein																								0:03	
5	ULRICHSEN Tilde Nygaard																									
6	SIBANDA Emilia Arroe	S	0/2	0		0/2												1						3	46:04	
7	HOPPE Kirstine Emilie	S	8/17	47	0/1	0/1		3/4		5/11		3	2	1		4									48:01	
10	JENSEN Isabella		0/3	0	0/3							1		3	1	2									29:52	
12	KOERTH Maria Liv Dahl																									
14	LÜTZHOFT Lina Thorstein	S	1/3	33		1/3										1		3	1						63:34	
15	PERSSON Julie Groth	S	5/7	71	2/3					3/4		1	3	1	1	4		1							60:47	
16	NIELSEN Freja Fonseca	S										1													63:27	
17	MARTENS Laura Duevang																								1:05	
18	RASMUSSEN Emma Hoirup																								0:01	
20	SOLLING FAGER Freja																									
22	JOHANSEN Julie Boendorf	S	5/6	83			4/5		1/1																68:02	
24	NORSKOV Cecillie Frydendahl		3/4	75	0/1			1/1		2/2		1	1			2									27:16	
29	BODKER Emilie Lolk		4/5	80	1/1	0/1				3/3		2				2									11:39	
Team / bench																									1	
TOTAL			30/51	59	3/9	3/9	6/7	4/5	1/1	13/20	0/0	9	6	5	2	15	0	5	1	1	3	0	0			

Goalkeepers		Saves / shots								
#	Surname and name	Tot.	%	9m	6m	Wing	7m	FB	Brk.	LD
12	KOERTH Maria Liv Dahl									
16	NIELSEN Freja Fonseca	10/37	27	2/4	4/14	1/9	0/3		3/7	
20	SOLLING FAGER Freja									
TOTAL		10/37	27	2/4	4/14	1/9	0/3	0/0	3/7	0/0

Coach: Ole Lund Bitsch

Number of attacks: 62, Efficiency: 48%, Average Duration: 33.21 seconds

Attack by type of defense

	Shots	9m	6m	Wing	TF	E7	E2
On def. 6-0	13/27	0/4	1/7	2/2	12	4	1
On def. 5-1	8/11	3/5	0/0	3/3	2	0	1
On def. 3-3	2/5	0/0	0/0	1/2	1	1	0
Fastbreak	1/1				0	0	0

Defense by type

	Total	9m	6m	Wing	Stl.	C7	2m
Def. 6-0	23/39	2/5	9/14	8/9	0	5	0
Fastbreak	0/1				0	0	3

Defense with superiority / minority / goalkeeper out

	Attack				Reaction		
	Att.	Eff.	Shots	TF	FB	LD	Tot.
7 on 6 (GK out)	3	67%	2/2	1	0/0	0/0	0/0
6 on 6 (GK out)	2	50%	1/1	1	0/0	0/0	0/0
6 on 6	50	42%	21/38	12			
6 on 5	6	83%	5/6	0			

Numbers show attacking numbers of opponent. Lower efficiency of opponent means better defense of this team

Attack with superiority / minority / goalkeeper out

	Attack				Reaction		
	Att.	Eff.	Shots	TF	FB	LD	Tot.
7 on 6 (GK out)	21	57%	12/16	5	0/1	1/3	1/4
6 on 6 (GK out)	5	60%	3/4	1	0/0	1/1	1/1
6 on 6	32	41%	13/23	9			
6 on 5	4	50%	2/4	0			

Player superiority / GK out counted at the end of attack (in case it changes during attack)

Jersey number Tot. Total shooting 6m 6m (line) shooting 9m 9m shooting Wng Wing shooting FB Fastbreak sh. 7m 7m penalty sh.
Brk. Breakthrough sh. LD Long distance sh. As. Assists PC Pass clear chance E7 Earned 7m pen. TF Technical faults St. Steals
2m 2m punishments C7. Committed 7m E2 Earned 2m pun. YC. Yellow cards R/B Red/Blue cards Blk. Blocks S Starting Line-up



25th IHF Women's Junior World Championship 2026



Final Round, Semifinals

Match Team Statistics

Match No. 104

Denmark 30 - 29 Spain

(12 - 13) (13 - 12) (OT1: 5 - 4)

3.7.2026. 18:30

Attendance: 3800

Jinzhong City Gymnasium

Referees: Kristof Altmar (HUN) / Marton Horvath (HUN)

Shot distribution by player

2 C. Antivakis

1/1		
		1/1
1/1		1/1

3 J. Andersen

5 T. Ulrichsen

6 E. Sibanda

0/2		

7 K. Hoppe

	0/1	
0/1	0/1	1/1
2/4	2/4	3/3

1 post 1 miss.

10 I. Jensen

	0/1	0/1

1 miss.

14 L. Lützhof

0/1		
		0/1
		1/1

15 J. Persson

2/2		1/2
1/1		1/1

1 miss.

17 L. Martens

18 E. Rasmussen

22 J. Johansen

1/1	2/2	
	1/1	

1 miss. 1/1 lob

24 C. Norskov

		2/2
1/1		

1 post

29 E. Bodker

3/3		
1/1		
0/1		

TOTAL

5/6	2/3	
3/6	0/2	5/8
5/8	3/5	6/6

2 post 4 miss. 1/1 lob

Saves distribution goalkeepers

12 M. Koerth

16 F. Nielsen

1/4	1/1	0/2
1/4		1/5
1/11	0/1	5/8

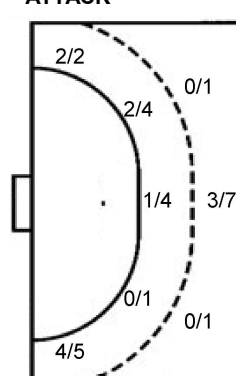
20 F. Solling Fager

TOTAL

1/4	1/1	0/2
1/4		1/5
1/11	0/1	5/8

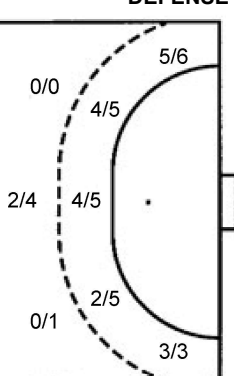
Shots by position

ATTACK



7m penalties 4/5
Fastbreak 1/1
Breakthrough 13/20
Long dist. 0/0

DEFENSE



7m penalties 3/5
Fastbreak 0/1
Breakthrough 4/11
Long dist. 2/4

Shooting statistics

Position	Goals	Sav.	Miss.	Post	Blk.	Total	%
Back (9m)	3	4	1	1	0	9	33
Line (6m)	3	6	0	0	0	9	33
Wing	6	0	1	0	0	7	86
7m penalties	4	1	0	0	0	5	80
Fastbreak	1	0	0	0	0	1	100
Breakthrough	13	4	2	1	0	20	65
Total	30	15	4	2	0	51	59

Jersey number Tot. Total shooting 6m 6m (line) shooting 9m 9m shooting Wng Wing shooting FB Fastbreak sh. 7m 7m penalty sh.
Brk. Breakthrough sh. LD Long distance sh. As. Assists PC Pass clear chance E7 Earned 7m pen. TF Technical faults St. Steals
2m 2m punishments C7. Committed 7m E2 Earned 2m pun. YC. Yellow cards R/B Red/Blue cards Blk. Blocks S Starting Line-up

Handball statistics and livescore by Toma-soft ltd (www.toma-soft.hr)



25th IHF Women's Junior World Championship 2026



Final Round, Semifinals

Match Team Statistics

Match No. 104

Denmark 30 - 29 Spain

(12 - 13) (13 - 12) (OT1: 5 - 4)

3.7.2026. 18:30

Attendance: 3800

Jinzhong City Gymnasium

Referees: Kristof Altmar (HUN) / Marton Horvath (HUN)

Spain

Players		Goals / shots									Attack					Def.			Penalties			TP			
#	Surname and name	S	Tot.	%	9m	6m	Wing	7m	FB	Brk.	LD	As.	PC	E7	E2	TF	St.	C7	Blk	YC	2m		R	B	
1	GASSAMA CISSOKHO Goundo	S																							59:44
2	ROS QUESADA Anna															1									3:12
3	FONKENG MFOTI OG Kelly Nnonzie	S	5/5	100		5/5						1		1					2						55:00
4	ARRUABARRENA GAZTANAZPI Libe															1	1	1				2			38:18
6	JULVE BENAGES Lucia		7/8	88		2/2	2/2	3/4										1							48:39
7	RODRIGUEZ LARIO Belen	S	4/9	44	1/1	1/1		0/1	0/1	1/4	1/1	9	4	2	2	2	3								46:06
8	JALLOW DIALLO Kadidiatou		0/2	0		0/1					0/1														17:07
9	CATALÁ MOLLÁ Martina	S	0/3	0		0/2					0/1	1		1		1	1								51:25
10	PATINO LINES Nerea		5/9	56	1/3	1/2				2/3	1/1	3	1			3	1								52:17
11	FIDALGO DURAN Carmen	S	2/7	29	0/1	1/2				1/4		4	1	1	1	5	1								41:07
13	BOMABA SANTOS Lidia Trinidad																								
15	LLUCH RICO Paula	S	5/6	83			5/6																		41:09
16	BERNABE COBOS Udane																								7:47
18	PEREZ RODRIGUEZ Eva Maria																								
19	PALANQUÉS MARTORELL Sara	S	1/1	100			1/1									1									22:02
20	RODRIGUEZ MAGALLON Laura																								5:15
Team / bench																						1			
TOTAL			29/50	58	2/5	10/15	8/9	3/5	0/1	4/11	2/4	18	6	5	3	14	6	5	0	1	2	0	0		

Goalkeepers		Saves / shots								
#	Surname and name	Tot.	%	9m	6m	Wing	7m	FB	Brk.	LD
1	GASSAMA CISSOKHO Goundo	15/39	38	4/6	6/9	0/4	1/3	0/1	4/16	
16	BERNABE COBOS Udane	0/6	0	0/1		0/2	0/2		0/1	
TOTAL		15/45	33	4/7	6/9	0/6	1/5	0/1	4/17	0/0

Coach: Joaquin Jaime Rocamora Cases

Number of attacks: 61, Efficiency: 48%, Average Duration: 34.67 seconds

Attack by type of defense

	Shots	9m	6m	Wing	TF	E7	E2
On def. 6-0	23/39	2/5	9/14	8/9	14	5	3
Fastbreak	0/1				0	0	0

Defense by type

	Total	9m	6m	Wing	Stl.	C7	2m
Def. 6-0	13/27	0/4	1/7	2/2	4	4	0
Def. 5-1	8/11	3/5	0/0	3/3	1	0	0
Def. 3-3	2/5	0/0	0/0	1/2	1	1	0
Fastbreak	1/1				0	0	2

Attack with superiority / minority / goalkeeper out

	Attack				Reaction		
	Att.	Eff.	Shots	TF	FB	LD	Tot.
7 on 6 (GK out)	3	67%	2/2	1	0/0	0/0	0/0
6 on 6 (GK out)	2	50%	1/1	1	0/0	0/0	0/0
6 on 6	50	42%	21/38	12			
6 on 5	6	83%	5/6	0			

Player superiority / GK out counted at the end of attack (in case it changes during attack)

Defense with superiority / minority / goalkeeper out

	Attack				Reaction		
	Att.	Eff.	Shots	TF	FB	LD	Tot.
7 on 6 (GK out)	21	57%	12/16	5	0/1	1/3	1/4
6 on 6 (GK out)	5	60%	3/4	1	0/0	1/1	1/1
6 on 6	32	41%	13/23	9			
6 on 5	4	50%	2/4	0			

Numbers show attacking numbers of opponent. Lower efficiency of opponent means better defense of this team

Jersey number Tot. Total shooting 6m 6m (line) shooting 9m 9m shooting Wng Wing shooting FB Fastbreak sh. 7m 7m penalty sh.
 Brk. Breakthrough sh. LD Long distance sh. As. Assists PC Pass clear chance E7 Earned 7m pen. TF Technical faults St. Steals
 2m 2m punishments C7. Committed 7m E2 Earned 2m pun. YC. Yellow cards R/B Red/Blue cards Blk. Blocks S Starting Line-up

Handball statistics and livescore by Toma-soft ltd (www.toma-soft.hr)



25th IHF Women's Junior World Championship 2026



Final Round, Semifinals

Match Team Statistics

Match No. 104

Denmark 30 - 29 Spain

(12 - 13) (13 - 12) (OT1: 5 - 4)

3.7.2026. 18:30

Attendance: 3800

Jinzhong City Gymnasium

Referees: Kristof Altmar (HUN) / Marton Horvath (HUN)

Shot distribution by player

2 A. Ros Quesada

3 K. Fonkeng Mfotio

1/1		
1/1		
2/2		1/1

4 L. Arruabarrena Gaztanazpi

6 L. Julve Benages

1/1		2/2
1/1		2/2
1/1		

1 miss.

7 B. Rodriguez Lario

	1/1	
1/1	1/1	

2 post 3 miss. 1/1 lob

8 K. Jallow Diallo

0/1		

1 miss.

9 M. Catalá Mollá

		0/2

1 miss.

10 N. Patino Limes

1/1		
1/1	1/1	
1/1		1/3

1 post 1 block

11 C. Fidalgo Duran

0/1		
0/1		1/2
1/1		0/1

1 miss.

13 L. Bomaba Santos

15 P. Lluch Rico

	0/1	
4/4		1/1

18 E. Perez Rodriguez

19 S. Palanqués Martorell

	1/1	

20 L. Rodriguez Magallon

TOTAL

3/4	0/1	2/2
3/4	2/2	4/5
10/11	1/1	3/8

3 post 7 miss. 1 block 1/1 lob

Saves distribution goalkeepers

1 G. Gassama Cissokho

1/6	1/2	
3/6	2/2	3/7
3/7	2/3	0/5

16 U. Bernabe Cobos

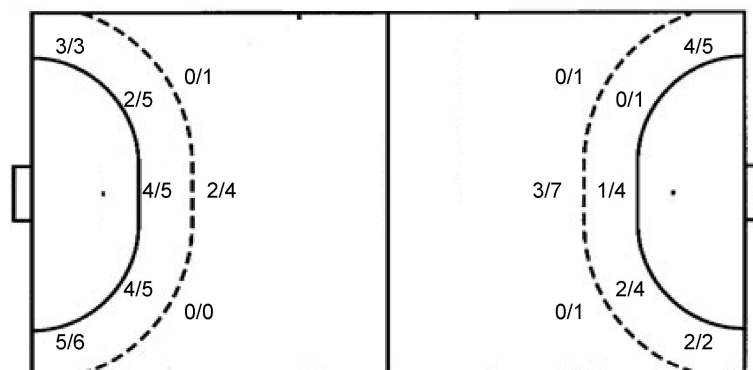
	0/1	
		0/1
0/1	0/2	0/1

TOTAL

1/6	1/3	
3/6	2/2	3/8
3/8	2/5	0/6

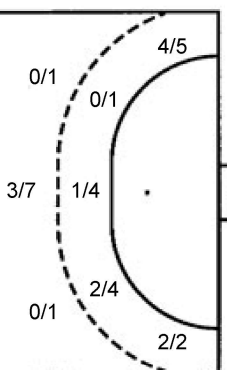
Shots by position

ATTACK



7m penalties 3/5
Fastbreak 0/1
Breakthrough 4/11
Long dist. 2/4

DEFENSE



7m penalties 4/5
Fastbreak 1/1
Breakthrough 13/20
Long dist. 0/0

Shooting statistics

Position	Goals	Sav.	Miss.	Post	Blk.	Total	%
Back (9m)	2	2	0	0	1	5	40
Line (6m)	10	4	0	1	0	15	67
Wing	8	1	0	0	0	9	89
7m penalties	3	0	2	0	0	5	60
Fastbreak	0	0	0	1	0	1	0
Breakthrough	4	3	3	1	0	11	36
Total	27	10	5	3	1	46	59

Jersey number Tot. Total shooting 6m 6m (line) shooting 9m 9m shooting Wng Wing shooting FB Fastbreak sh. 7m 7m penalty sh.
Brk. Breakthrough sh. LD Long distance sh. As. Assists PC Pass clear chance E7 Earned 7m pen. TF Technical faults St. Steals
2m 2m punishments C7. Committed 7m E2 Earned 2m pun. YC. Yellow cards R/B Red/Blue cards Blk. Blocks S Starting Line-up

Handball statistics and livescore by Toma-soft ltd (www.toma-soft.hr)

