



25th IHF Women's Junior World Championship 2026



Final Round, 13-14. place

Match Team Statistics
Match No. 102

P.R. of China 25 - 35 Hungary
(11 - 16) (14 - 19)

3.7.2026. 13:45
Attendance: 3600
Jinzhong City Gymnasium

Referees: Khasan Ismoilov (UZB) / Khasan Ismoilov (UZB)

P.R. of China

Players		Goals / shots									Attack					Def.			Penalties				TP		
#	Surname and name	S	Tot.	%	9m	6m	Wing	7m	FB	Brk.	LD	As.	PC	E7	E2	TF	St.	C7	Blk	YC	2m	R	B		
1	SUN Yihan																								11:35
3	PAN Fengying	S	5/8	63	2/3	0/1		2/3		1/1		2	2	3		4	1	2							47:48
5	ZHANG Jingwen		2/2	100		1/1		1/1																	6:17
6	FU Yujie																								
8	LIANG Jing	S	6/13	46	2/9	1/1			1/1	2/2		3		1	1	4		2							46:33
9	ZHANG Shuoyan	S	1/4	25	0/1			1/3				2	1	1		2									38:07
10	HU Jiaxin											1				2		1							9:14
12	WANG Xiaoyan															1									13:19
15	YANG Yue	S	1/1	100		1/1							1	2	1			1							42:40
16	HUANG Sitong	S																							26:06
21	XING Ziyao															1		1							13:22
24	ZHU Yifan		1/1	100						1/1		2		2		1		1							19:12
37	CHEN Xinyu		1/2	50		1/2						1				1									29:44
39	SHA Yiyao	S														1									23:44
55	LIU Yixuan		2/3	67			2/3																		34:13
56	CHENG Yahan	S	6/8	75		2/2	3/3	1/2	0/1																58:06
	Team / bench																								
	TOTAL		25/42	60	4/13	6/8	5/6	5/9	1/2	4/4	0/0	11	4	9	2	17	1	8	0	0	5	0	0		

Goalkeepers		Saves / shots								
#	Surname and name	Tot.	%	9m	6m	Wing	7m	FB	Brk.	LD
1	SUN Yihan	0/11	0	0/2	0/2		0/3	0/1	0/3	
12	WANG Xiaoyan	1/9	11	0/3	1/3	0/1	0/1		0/1	
16	HUANG Sitong	4/18	22		0/1	2/3	0/2	0/3	2/9	
	TOTAL	5/38	13	0/5	1/6	2/4	0/6	0/4	2/13	0/0

Coach: Zsadányi Sándor

Number of attacks: 58, Efficiency: 43%, Average Duration: 35.53 seconds

Attack by type of defense

	Shots	9m	6m	Wing	TF	E7	E2
On def. 6-0	17/29	4/13	4/6	5/6	17	9	2
Fastbreak	1/2				0	0	0

Defense by type

	Total	9m	6m	Wing	Stl.	C7	2m
Def. 6-0	18/20	5/5	3/3	1/2	0	4	0
Def. 5-1	2/6	0/0	1/3	0/1	0	0	0
Def. 3-2-1	3/8	0/0	1/1	1/3	1	4	0
Fastbreak	4/4				0	0	5

Attack with superiority / minority / goalkeeper out

	Attack				Reaction		
	Att.	Eff.	Shots	TF	FB	LD	Tot.
7 on 6 (GK out)	10	40%	4/7	3	0/0	1/2	1/2
7 on 5 (GK out)	2	0%	0/1	1	0/0	0/0	0/0
6 on 6 (GK out)	8	25%	2/6	2	1/1	1/1	2/2
6 on 6	38	50%	19/27	11			

Player superiority / GK out counted at the end of attack (in case it changes during attack)

Defense with superiority / minority / goalkeeper out

	Attack				Reaction		
	Att.	Eff.	Shots	TF	FB	LD	Tot.
6 on 6 (GK out)	1	0%	0/1	0	0/0	0/0	0/0
6 on 6	47	57%	27/35	12			
6 on 5 (GK out)	1	100%	1/1	0	0/0	0/0	0/0
6 on 5	11	64%	7/10	1			

Numbers show attacking numbers of opponent. Lower efficiency of opponent means better defense of this team

Jersey number Tot. Total shooting 6m 6m (line) shooting 9m 9m shooting Wng Wing shooting FB Fastbreak sh. 7m 7m penalty sh.
Brk. Breakthrough sh. LD Long distance sh. As. Assists PC Pass clear chance E7 Earned 7m pen. TF Technical faults St. Steals
2m 2m punishments C7. Committed 7m E2 Earned 2m pun. YC. Yellow cards R/B Red/Blue cards Blk. Blocks S Starting Line-up



25th IHF Women's Junior World Championship 2026



Final Round, 13-14. place

Match Team Statistics

Match No. 102

P.R. of China 25 - 35 Hungary

(11 - 16) (14 - 19)

3.7.2026. 13:45

Attendance: 3600

Jinzhong City Gymnasium

Referees: Khasan Ismoilov (UZB) / Khasan Ismoilov (UZB)

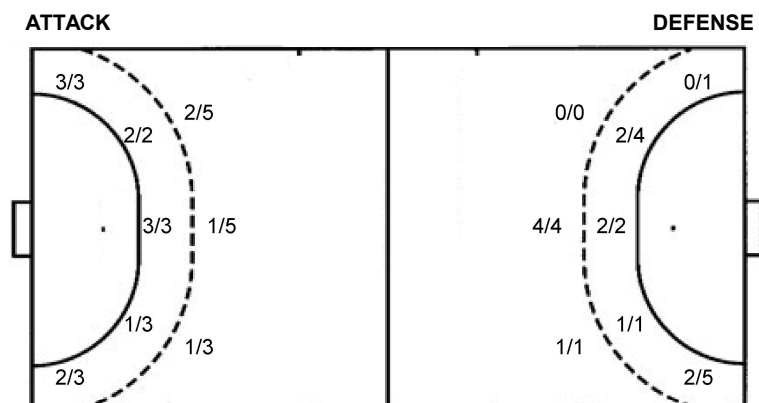
Shot distribution by player

3 F. Pan	5 J. Zhang	6 Y. Fu	8 J. Liang	9 S. Zhang	10 J. Hu	15 Y. Yang
1/1 0/1 0/1 2/2 2/2	1/1 1/1		1/1 0/1 0/1 1/1 2/2 1/1	1/2		1/1
1 block			2 post 1 miss. 2 block 1/1 lob	1 post 1 miss.		
21 Z. Xing	24 Y. Zhu	37 X. Chen	39 Y. Sha	55 Y. Liu	56 Y. Cheng	TOTAL
	1/1	1/1		0/1 1/1 1/1	1/1 1/2 1/2 1/1 2/2	3/3 1/2 1/1 2/4 0/2 2/4 8/8 4/5 3/3
	1 post					4 post 2 miss. 3 block 1/1 lob

Saves distribution goalkeepers

1 Y. Sun	12 X. Wang	16 S. Huang	TOTAL
0/1 0/2 0/4	0/1 0/1 1/4 0/2	0/2 0/1 1/5 0/3 0/2 1/1 2/4	0/4 0/2 1/5 0/5 1/10 1/1 2/10

Shots by position



7m penalties 5/9
Fastbreak 1/2
Breakthrough 4/4
Long dist. 0/0

7m penalties 6/8
Fastbreak 4/4
Breakthrough 11/16
Long dist. 2/3

Shooting statistics

Position	Goals	Sav.	Miss.	Post	Blk.	Total	%
Back (9m)	4	2	1	3	3	13	31
Line (6m)	6	1	0	1	0	8	75
Wing	5	1	0	0	0	6	83
7m penalties	5	3	1	0	0	9	56
Fastbreak	1	1	0	0	0	2	50
Breakthrough	4	0	0	0	0	4	100
Total	25	8	2	4	3	42	60

Jersey number Tot. Total shooting 6m 6m (line) shooting 9m 9m shooting Wng Wing shooting FB Fastbreak sh. 7m 7m penalty sh.
Brk. Breakthrough sh. LD Long distance sh. As. Assists PC Pass clear chance E7 Earned 7m pen. TF Technical faults St. Steals
2m 2m punishments C7. Committed 7m E2 Earned 2m pun. YC. Yellow cards R/B Red/Blue cards Blk. Blocks S Starting Line-up



25th IHF Women's Junior World Championship 2026



Final Round, 13-14. place

Match Team Statistics
Match No. 102

P.R. of China 25 - 35 Hungary
(11 - 16) (14 - 19)

3.7.2026. 13:45
Attendance: 3600
Jinzhong City Gymnasium

Referees: Khasan Ismoilov (UZB) / Khasan Ismoilov (UZB)

Hungary

Players		Goals / shots									Attack				Def.			Penalties				TP			
#	Surname and name	S	Tot.	%	9m	6m	Wing	7m	FB	Brk.	LD	As.	PC	E7	E2	TF	St.	C7	Blk	YC	2m	R	B		
7	VADKERTI Luca		2/2	100							2/2	6	3		1		1	1							49:42
8	FEHER Luca	S	1/2	50			0/1		1/1						1		2								30:18
16	HORVATH Zelda																								15:16
18	SZILAGYI Diána		0/1	0							0/1					1									28:58
26	KACSÓ Noémi		8/9	89		1/2		1/1	2/2	4/4		2	1	3	1	2									28:27
41	BALAZS Bítia	S	2/5	40			1/4		1/1			1					2								30:54
49	SZEIBERT Anna Rebeka	S	4/4	100	2/2					2/2							1	3	2		1				27:53
55	VARGA Katalin	S															1								10:53
57	KECELI-MÉSZÁROS Renáta	S	4/6	67	2/2					2/4		3		1		2									44:45
66	RÉDECSI Polett		1/2	50						1/2							1								21:25
67	TEPLÁN Korina		1/1	100			1/1									1	1	1							29:06
73	SZÁR Evelin															1	1	1							15:11
74	SERES Liza		3/4	75		3/4								1		2	1								33:06
77	KRISTON Kíra	S	1/3	33						1/3			1	1		1									14:11
78	PÁLMAI Liza		8/10	80	1/1	1/1		5/7		1/1			1	1		2									24:41
85	MAJOROS Gréta	S																							15:14
	Team / bench															1									
	TOTAL		35/49	71	5/5	5/7	2/6	6/8	4/4	11/16	2/3	12	6	8	2	13	7	9	3	0	1	0	0		

Goalkeepers		Saves / shots								
#	Surname and name	Tot.	%	9m	6m	Wing	7m	FB	Brk.	LD
16	HORVATH Zelda	2/12	17		0/2	0/3	2/6		0/1	
18	SZILAGYI Diána	5/14	36	1/3	1/3	1/3	1/2	1/2	0/1	
85	MAJOROS Gréta	1/7	14	1/3	0/2				0/2	
	TOTAL	8/33	24	2/6	1/7	1/6	3/8	1/2	0/4	0/0

Coach: **Beáta Bohus**

Number of attacks: 60, Efficiency: 58%, Average Duration: 25.62 seconds

Attack by type of defense

	Shots	9m	6m	Wing	TF	E7	E2
On def. 6-0	18/20	5/5	3/3	1/2	7	4	2
On def. 5-1	2/6	0/0	1/3	0/1	1	0	0
On def. 3-2-1	3/8	0/0	1/1	1/3	5	4	0
Fastbreak	4/4				0	0	0

Defense by type

	Total	9m	6m	Wing	Stl.	C7	2m
Def. 6-0	17/29	4/13	4/6	5/6	7	9	0
Fastbreak	1/2				0	0	1

Attack with superiority / minority / goalkeeper out

	Attack				Reaction		
	Att.	Eff.	Shots	TF	FB	LD	Tot.
6 on 6 (GK out)	1	0%	0/1	0	0/0	0/0	0/0
6 on 6	47	57%	27/35	12			
6 on 5 (GK out)	1	100%	1/1	0	0/0	0/0	0/0
6 on 5	11	64%	7/10	1			

Player superiority / GK out counted at the end of attack (in case it changes during attack)

Defense with superiority / minority / goalkeeper out

	Attack				Reaction		
	Att.	Eff.	Shots	TF	FB	LD	Tot.
7 on 6 (GK out)	10	40%	4/7	3	0/0	1/2	1/2
7 on 5 (GK out)	2	0%	0/1	1	0/0	0/0	0/0
6 on 6 (GK out)	8	25%	2/6	2	1/1	1/1	2/2
6 on 6	38	50%	19/27	11			

Numbers show attacking numbers of opponent. Lower efficiency of opponent means better defense of this team

Jersey number Tot. Total shooting 6m 6m (line) shooting 9m 9m shooting Wng Wing shooting FB Fastbreak sh. 7m 7m penalty sh.
Brk. Breakthrough sh. LD Long distance sh. As. Assists PC Pass clear chance E7 Earned 7m pen. TF Technical faults St. Steals
2m 2m punishments C7. Committed 7m E2 Earned 2m pun. YC. Yellow cards R/B Red/Blue cards Blk. Blocks S Starting Line-up



25th IHF Women's Junior World Championship 2026



Final Round, 13-14. place

Match Team Statistics

Match No. 102

P.R. of China 25 - 35 Hungary

(11 - 16) (14 - 19)

3.7.2026. 13:45

Attendance: 3600

Jinzhong City Gymnasium

Referees: Khasan Ismoilov (UZB) / Khasan Ismoilov (UZB)

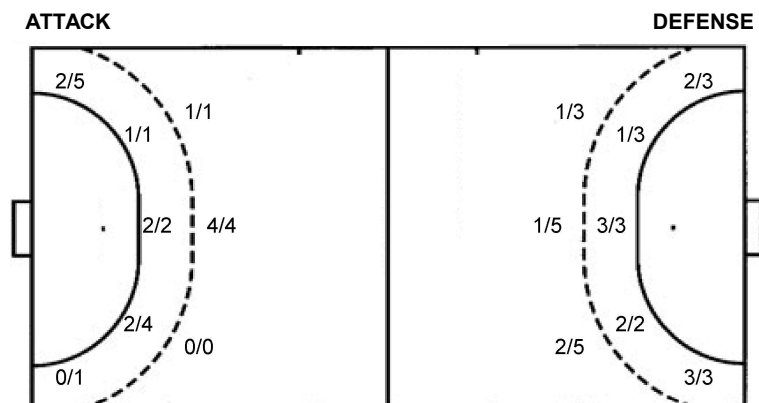
Shot distribution by player

7 L. Vadkerti 2/2	8 L. Fehér 1/1 1 miss.	26 N. Kacsó 1/1 2/2 1/1 3/4 1/1	41 B. Balázs 1/1 0/1 0/1 1/1	49 A. Szeibert 1/1 1/1 2/2	55 K. Varga	57 R. Keceli-Mészáros 1/1 1/1 2/2 1 post 1 miss.
66 P. Rédecsi 1/1 1 post	67 K. Teplán 1/1 lob	73 E. Szár	74 L. Seres 1/1 1/1 1 post	77 K. Kriston 1/1 0/2	78 L. Pálmai 1/1 1/1 1/1 2/2 3/3 2 post	TOTAL 4/4 2/2 4/5 5/5 9/10 2/3 8/10 6 post 2 miss. 1/1 lob

Saves distribution goalkeepers

16 Z. Horváth 0/1 0/1 0/1 1/2 0/4 1/2 0/1	18 D. Szilágyi 0/1 1/1 2/3 1/1 1/1 0/4 0/1 0/1	85 G. Majoros 0/1 0/1 1/1 0/1 0/2 0/1	TOTAL 0/3 1/2 0/1 2/4 2/2 2/4 0/8 1/5 0/3
---	--	---	---

Shots by position



7m penalties 6/8
Fastbreak 4/4
Breakthrough 11/16
Long dist. 2/3

7m penalties 5/9
Fastbreak 1/2
Breakthrough 4/4
Long dist. 0/0

Shooting statistics

Position	Goals	Sav.	Miss.	Post	Blk.	Total	%
Back (9m)	5	0	0	0	0	5	100
Line (6m)	5	1	0	1	0	7	71
Wing	2	2	1	1	0	6	33
7m penalties	6	0	0	2	0	8	75
Fastbreak	4	0	0	0	0	4	100
Breakthrough	11	2	1	2	0	16	69
Total	33	5	2	6	0	46	72

Jersey number Tot. Total shooting 6m 6m (line) shooting 9m 9m shooting Wng Wing shooting FB Fastbreak sh. 7m 7m penalty sh.
Brk. Breakthrough sh. LD Long distance sh. As. Assists PC Pass clear chance E7 Earned 7m pen. TF Technical faults St. Steals
2m 2m punishments C7. Committed 7m E2 Earned 2m pun. YC. Yellow cards R/B Red/Blue cards Blk. Blocks S Starting Line-up

Handball statistics and livescore by Toma-soft ltd (www.toma-soft.hr)

