



# 25th IHF Women's Junior World Championship 2026



Final Round, Semifinals

Match Team Statistics  
Match No. 100

**France 31 - 36 Germany**  
(15 - 15) (16 - 21)

3.7.2026. 16:00  
Attendance: 3600  
Jinzhong City Gymnasium

Referees: Mads Fremstad (NOR) / Jorgen Jorstad (NOR)

## France

Players		Goals / shots									Attack				Def.			Penalties				TP			
#	Surname and name	S	Tot.	%	9m	6m	Wing	7m	FB	Brk.	LD	As.	PC	E7	E2	TF	St.	C7	Bik	YC	2m	R	B		
1	GONZALEZ Leane											1					1								37:38
4	GROS Blandine	S	2/3	67		1/2	1/1								1		1								34:00
5	BARBARIN Jade		1/1	100					1/1								1	1							28:14
7	ABDOU Dawiya		5/7	71		0/1	2/2		3/3	0/1		2	1	2	1	1									39:57
8	NAAL Liyah		1/2	50				1/1		0/1		1	1												31:15
9	INJAI Zeina	S	4/10	40	3/6		0/1	1/2		0/1		2					5	1	1	1					33:06
10	KOESTNER Claire	S	6/11	55	2/5	0/1		1/1		2/2	1/2	3	3				6		3			1			48:13
11	BUREU-CRUZ Emma																								
13	FERDILUS Elea	S	2/4	50		2/4									1	1									35:57
14	ATANGANA Yvana																								6:08
16	GINDRO Romane	S																							9:38
17	CHANTELLE Melissa	S	4/6	67	0/1			1/2		3/3				1	1	1			1						29:13
18	VAMA Mara	S	1/1	100						1/1		1					1								23:17
19	LAMBET Lalie		1/1	100		1/1								1					2						18:40
21	KINGUE Prunelle		4/8	50	0/2				1/1	3/5		1		1		1				2					32:46
24	LANDRIAU Maelle																								11:57
	Team / bench																								
	<b>TOTAL</b>		31/54	57	5/14	4/9	3/4	4/6	5/5	9/14	1/2	11	5	6	3	19	5	5	3	1	1	0	0		

Goalkeepers		Saves / shots								
#	Surname and name	Tot.	%	9m	6m	Wing	7m	FB	Brk.	LD
1	GONZALEZ Leane	8/29	28	2/5	2/6	2/7	0/2	0/3	2/6	
16	GINDRO Romane	2/8	25	2/3		0/4	0/1			
24	LANDRIAU Maelle	2/11	18	1/3	0/3	1/4	0/1			
	<b>TOTAL</b>	12/48	25	5/11	2/9	3/15	0/4	0/3	2/6	0/0

Coach: **Baradat Eric**

Number of attacks: 69, Efficiency: 45%, Average Duration: 25.94 seconds

### Attack by type of defense

	Shots	9m	6m	Wing	TF	E7	E2
On def. 6-0	21/41	5/14	4/9	3/4	19	6	2
On def. 5-1	0/0	0/0	0/0	0/0	0	0	1
Fastbreak	5/5				0	0	0

### Defense by type

	Total	9m	6m	Wing	Stl.	C7	2m
Def. 6-0	23/42	6/17	5/8	10/14	4	4	0
Def. 3-2-1	3/3	0/0	1/1	2/2	1	1	0
Def. press.	2/3	0/0	0/0	0/0	0	0	0
Fastbreak	3/3				0	0	1

### Attack with superiority / minority / goalkeeper out

	Attack				Reaction		
	Att.	Eff.	Shots	TF	FB	LD	Tot.
6 on 6 (GK out)	1	0%	0/0	1	0/0	0/0	0/0
6 on 6	61	46%	28/47	14			
6 on 5	7	43%	3/3	4			

Player superiority / GK out counted at the end of attack (in case it changes during attack)

### Defense with superiority / minority / goalkeeper out

	Attack				Reaction		
	Att.	Eff.	Shots	TF	FB	LD	Tot.
7 on 6 (GK out)	2	50%	1/1	1	0/0	0/1	0/1
6 on 6 (GK out)	4	50%	2/3	1	0/0	1/1	1/1
6 on 6	58	50%	29/46	12			
5 on 6	2	100%	2/2	0			
6 on 5	2	100%	2/2	0			

Numbers show attacking numbers of opponent. Lower efficiency of opponent means better defense of this team

# Jersey number Tot. Total shooting 6m 6m (line) shooting 9m 9m shooting Wng Wing shooting FB Fastbreak sh. 7m 7m penalty sh.  
Brk. Breakthrough sh. LD Long distance sh. As. Assists PC Pass clear chance E7 Earned 7m pen. TF Technical faults St. Steals  
2m 2m punishments C7. Committed 7m E2 Earned 2m pun. YC. Yellow cards R/B Red/Blue cards Blk. Blocks S Starting Line-up



# 25th IHF Women's Junior World Championship 2026



Final Round, Semifinals

## Match Team Statistics

Match No. 100

## France 31 - 36 Germany

(15 - 15) (16 - 21)

3.7.2026. 16:00

Attendance: 3600

Jinzhong City Gymnasium

Referees: Mads Fremstad (NOR) / Jorgen Jorstad (NOR)

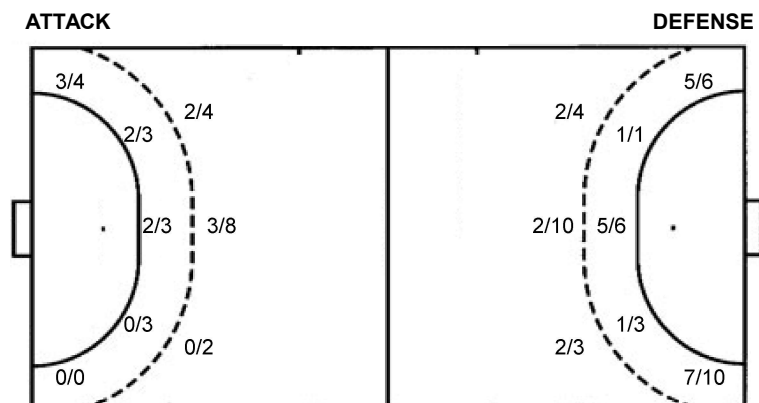
### Shot distribution by player

<b>4 B. Gros</b> 1 post 1/1	<b>5 J. Barbarin</b> 1/1 lob	<b>7 D. Abdou</b> 1/1 1/1 0/2 3/3	<b>8 L. Naal</b> 0/1 1/1	<b>9 Z. Injai</b> 2 block 0/1 1/3 0/1 1/1 1/1 1/1	<b>10 C. Koestner</b> 1 post 1 miss. 0/1 3/4 1/1 2/2	<b>11 E. Bureu-Cruz</b>
<b>13 E. Ferdilus</b> 2 post 2/2	<b>14 Y. Atangana</b>	<b>17 M. Chantelly</b> 1/1 0/2 2/2 1/1	<b>18 M. Vama</b> 1/1	<b>19 L. Lambet</b> 1/1	<b>21 P. Kingue</b> 1 miss. 1 block 1/1 1/1 0/1 0/1 2/2	<b>TOTAL</b> 2/2 1/1 1/3 3/7 0/2 2/4 9/11 2/4 10/10 4 post 2 miss. 3 block 1/1 lob

### Saves distribution goalkeepers

<b>1 L. Gonzalez</b> 0/2 2/3 0/1 2/4 2/4 1/5 1/5 0/5	<b>16 R. Gindro</b> 0/1 1/1 0/1 0/4 1/1	<b>24 M. Landriau</b> 0/1 0/2 0/2 2/2 0/4	<b>TOTAL</b> 0/4 3/4 0/3 2/5 2/4 1/11 3/7 1/10
---	--	---	---

### Shots by position



7m penalties 4/6  
Fastbreak 5/5  
Breakthrough 9/14  
Long dist. 1/2

7m penalties 4/5  
Fastbreak 3/3  
Breakthrough 4/6  
Long dist. 0/0

### Shooting statistics

Position	Goals	Sav.	Miss.	Post	Blk.	Total	%
Back (9m)	5	4	1	1	3	14	36
Line (6m)	4	2	0	3	0	9	44
Wing	3	1	0	0	0	4	75
7m penalties	4	2	0	0	0	6	67
Fastbreak	5	0	0	0	0	5	100
Breakthrough	9	5	0	0	0	14	64
<b>Total</b>	<b>30</b>	<b>14</b>	<b>1</b>	<b>4</b>	<b>3</b>	<b>52</b>	<b>58</b>

# Jersey number Tot. Total shooting 6m 6m (line) shooting 9m 9m shooting Wng Wing shooting FB Fastbreak sh. 7m 7m penalty sh.  
Brk. Breakthrough sh. LD Long distance sh. As. Assists PC Pass clear chance E7 Earned 7m pen. TF Technical faults St. Steals  
2m 2m punishments C7. Committed 7m E2 Earned 2m pun. YC. Yellow cards R/B Red/Blue cards Blk. Blocks S Starting Line-up

Handball statistics and livescore by Toma-soft ltd (www.toma-soft.hr)



# 25th IHF Women's Junior World Championship 2026



Final Round, Semifinals

Match Team Statistics  
Match No. 100

**France 31 - 36 Germany**  
(15 - 15) (16 - 21)

3.7.2026. 16:00  
Attendance: 3600  
Jinzhong City Gymnasium

Referees: Mads Fremstad (NOR) / Jorgen Jorstad (NOR)

## Germany

#	Surname and name	S	Goals / shots							Attack					Def.			Penalties				TP		
			Tot.	%	9m	6m	Wing	7m	FB	Brk.	LD	As.	PC	E7	E2	TF	St.	C7	Blk	YC	2m		R	B
3	WALTHER Jana		1/1	100			1/1																	16:08
4	EGELING Lara	S	3/5	60		0/1	3/4																	26:36
5	NJINKEU Farrelle	S	8/13	62		1/2	6/9		1/1	0/1					1									41:56
6	MITTAG Aida	S	0/3	0	0/2					0/1		1		1	1									18:25
7	ROHR Chiara		4/4	100			2/2		2/2			1			1	1								32:34
8	LITVINOV Ruslana	S	3/3	100						3/3		7	2	2		3	2	1	1					43:19
11	LAMMICH Lisa												2		1							1		18:50
13	BORNHARDT Aylin		9/10	90		5/5		4/5							1		1							30:51
14	KERN Marleen		1/5	20	1/5							4	1		2	1	1							32:32
16	LINDEMANN Lena Marie																							0:37
17	NIEMANN Emma	S	1/2	50	1/2							1						1						15:52
18	KLOCKE Laura	S	1/2	50		1/2								1		1	2			1				33:38
20	TUCHOLKE Marlene		4/8	50	4/8							3			1	3		1						43:34
21	OTT Kim													2		1					1			7:20
28	GOLDAMMER Katharina		1/1	100						1/1					1									1:10
35	STEINECKE Lina	S										1												56:32
	Team / bench																							
	<b>TOTAL</b>		36/57	63	6/17	7/10	12/16	4/5	3/3	4/6	0/0	18	3	5	1	14	8	6	3	0	3	0	0	

#	Surname and name	Saves / shots								
		Tot.	%	9m	6m	Wing	7m	FB	Brk.	LD
16	LINDEMANN Lena Marie	1/2	50				1/2			
35	STEINECKE Lina	13/42	31	4/9	2/6	1/4	1/4	0/5	5/14	
	<b>TOTAL</b>	14/44	32	4/9	2/6	1/4	2/6	0/5	5/14	0/0

Coach: Christopher Nordmeyer

Number of attacks: 68, Efficiency: 53%, Average Duration: 26.29 seconds

### Attack by type of defense

	Shots	9m	6m	Wing	TF	E7	E2
On def. 6-0	23/42	6/17	5/8	10/14	10	4	1
On def. 3-2-1	3/3	0/0	1/1	2/2	2	1	0
On def. press.	2/3	0/0	0/0	0/0	2	0	0
Fastbreak	3/3				0	0	0

### Defense by type

	Total	9m	6m	Wing	Stl.	C7	2m
Def. 6-0	21/41	5/14	4/9	3/4	8	6	0
Fastbreak	5/5				0	0	3

### Attack with superiority / minority / goalkeeper out

	Attack				Reaction		
	Att.	Eff.	Shots	TF	FB	LD	Tot.
7 on 6 (GK out)	2	50%	1/1	1	0/0	0/1	0/1
6 on 6 (GK out)	4	50%	2/3	1	0/0	1/1	1/1
6 on 6	58	50%	29/46	12			
5 on 6	2	100%	2/2	0			
6 on 5	2	100%	2/2	0			

Player superiority / GK out counted at the end of attack (in case it changes during attack)

### Defense with superiority / minority / goalkeeper out

	Attack				Reaction		
	Att.	Eff.	Shots	TF	FB	LD	Tot.
6 on 6 (GK out)	1	0%	0/0	1	0/0	0/0	0/0
6 on 6	61	46%	28/47	14			
6 on 5	7	43%	3/3	4			

Numbers show attacking numbers of opponent. Lower efficiency of opponent means better defense of this team

# Jersey number Tot. Total shooting 6m 6m (line) shooting 9m 9m shooting Wng Wing shooting FB Fastbreak sh. 7m 7m penalty sh.  
Brk. Breakthrough sh. LD Long distance sh. As. Assists PC Pass clear chance E7 Earned 7m pen. TF Technical faults St. Steals  
2m 2m punishments C7. Committed 7m E2 Earned 2m pun. YC. Yellow cards R/B Red/Blue cards Blk. Blocks S Starting Line-up



# 25th IHF Women's Junior World Championship 2026



Final Round, Semifinals

Match Team Statistics  
Match No. 100

**France 31 - 36 Germany**  
(15 - 15) (16 - 21)

3.7.2026. 16:00  
Attendance: 3600  
Jinzhong City Gymnasium

Referees: Mads Fremstad (NOR) / Jorgen Jorstad (NOR)

## Shot distribution by player

3 J. Walther

	1/1	

4 L. Egeling

2/2	1/2	

1 post

5 F. Njinkeu

1/1	0/1	1/1
0/1		1/2
3/3	0/1	2/2

1 miss.

6 A. Mittag

		0/1
		0/1

1 block

7 C. Rohr

1/1		
	1/1	2/2

8 R. Litvinov

1/1		2/2

11 L. Lammich


13 A. Bornhardt

2/2		1/1
1/1		
4/4		1/1

1 post

14 M. Kern

0/1		1/1
0/1	0/1	

1 miss.

17 E. Niemann

	0/1	
1/1		

18 L. Klocke

	0/1	1/1

20 M. Tucholke

1/1	1/1	
		2/2

2 post 2 block

21 K. Ott


28 K. Goldammer

		1/1

## TOTAL

4/4	1/4	3/3
3/5		2/4
10/11	4/7	9/10

4 post 2 miss. 3 block

## Saves distribution goalkeepers

16 L. Lindemann

1/1		
		0/1

35 L. Steinecke

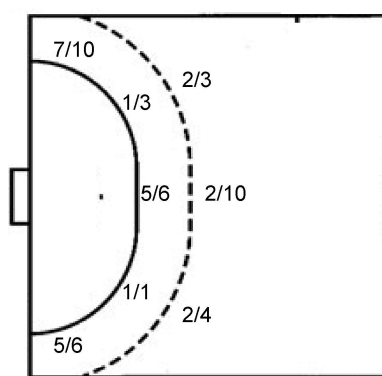
0/2	0/1	2/3
3/6	2/2	2/4
2/11	2/3	0/9

## TOTAL

0/2	0/1	2/3
4/7	2/2	2/4
2/11	2/3	0/10

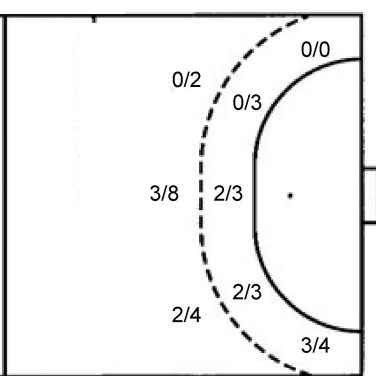
## Shots by position

### ATTACK



7m penalties 4/5  
Fastbreak 3/3  
Breakthrough 4/6  
Long dist. 0/0

### DEFENSE



7m penalties 4/6  
Fastbreak 5/5  
Breakthrough 9/14  
Long dist. 1/2

## Shooting statistics

Position	Goals	Sav.	Miss.	Post	Blk.	Total	%
Back (9m)	6	5	1	2	3	17	35
Line (6m)	7	2	0	1	0	10	70
Wing	12	3	1	0	0	16	75
7m penalties	4	0	0	1	0	5	80
Fastbreak	3	0	0	0	0	3	100
Breakthrough	4	2	0	0	0	6	67
<b>Total</b>	<b>36</b>	<b>12</b>	<b>2</b>	<b>4</b>	<b>3</b>	<b>57</b>	<b>63</b>

# Jersey number Tot. Total shooting 6m 6m (line) shooting 9m 9m shooting Wng Wing shooting FB Fastbreak sh. 7m 7m penalty sh.  
Brk. Breakthrough sh. LD Long distance sh. As. Assists PC Pass clear chance E7 Earned 7m pen. TF Technical faults St. Steals  
2m 2m punishments C7. Committed 7m E2 Earned 2m pun. YC. Yellow cards R/B Red/Blue cards Blk. Blocks S Starting Line-up

Handball statistics and livescore by Toma-soft ltd (www.toma-soft.hr)



# 25th IHF Women's Junior World Championship 2026



Final Round, Semifinals

## Match Team Statistics

Match No. 100

## France 31 - 36 Germany

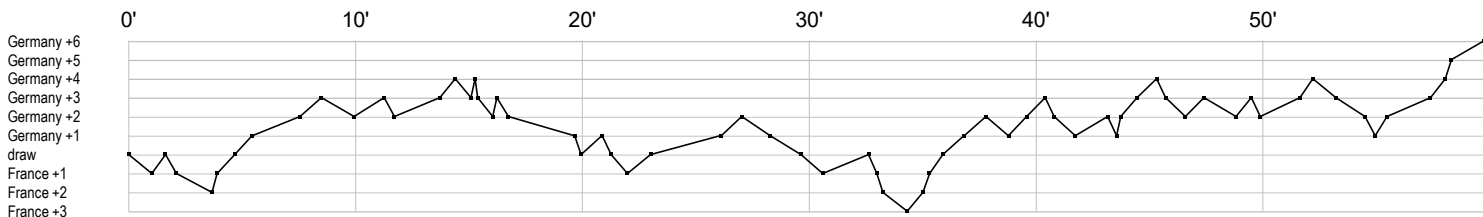
(15 - 15) (16 - 21)

3.7.2026. 16:00

Attendance: 3600

Jinzhong City Gymnasium

Referees: Mads Fremstad (NOR) / Jorgen Jorstad (NOR)



### France

1 Gonzalez L		s s r t s r r r r r		s a r s r s r r		r s r r r r r r r		r s r r r r
4 Gros B		g				bf g e t		
5 Barbarin J				g t				b r
7 Abdou D				f g g		p f g g g		e at ei a
8 Naal L				g a				p f
9 Injai Z		t t f c f t				f x a t f g b a f g		g f g t
10 Koestner C		g p2 f p f		g c p a t		g g f f c		a t c t g g t t f
11 Bureu-Cruz E								
13 Ferdilus E		f f						g i t
14 Atangana Y								
16 Gindro R		s r s r r r r r r						
17 Chantelly M		g t		i f		g f g		e gc
18 Vama M		g				a t		
19 Lambert L						b b g e		
21 Kingue P				f e g x g		a f x g f f		g t
24 Landriau M						r		ss r r r r r r r r

### Germany

3 Walther J				g				
4 Egeling L		g g		f		g		f
5 Njinkeu F		g g f f				f g g g g f g g		g f t
6 Mittag A		f a f e				t f		
7 Rohr C						g		a t g b g
8 Litvinov R		a e x a t b g t t				p a e g p a c a a g b a		
11 Lammich L						e t		e 2
13 Bornhardt A				g g c g g g				g f t
14 Kern M				g f f t a f		a b a t f a p c		
16 Lindemann L								s r
17 Niemann E		f a x g						
18 Klocke L						2 f		c c b g
20 Tucholke M				f f a g		ff at x g b g		g a b b
21 Ott K						t t		c2
28 Goldammer K								t g
35 Steinecke L		r r r s r r s s r r r r r		r r s s s s r r r s r r r a s s r r r r s r r		r r s r r r		r r s r r r

In game	g Goal scored	f Missed shot	a Assist	t Technical faults	b Steal
2 2min suspension	e Eearned 7m	c Committed 7m	y Yellow card	r Red Card	k Blue card
i Eearned 2min.	x Block	4 4min suspension	p Pass for clear chance	s Saved shot	r Received goal