



Match Team Statistics

Statistiques du match par équipe

Match 3

ESP 18 - 29 BRA
(10 - 15) (8 - 14)

Referees: KURTAGIC M / WETTERWIK M (SWE)

ESP - Spain

Players		Shots									Offence			Defence		Punishments			TP	
No.	Name	G/S	%	6m	Wing	9m	7m	FB	BT	EG	AS	TO	TF	ST	BS	YC	2Min	RC		BC
1	WIGGINS Nicole																			37:40
2	LOPEZ Marta	5/5	100		5/5							1								42:45
6	CAMPOS Carmen	4/7	57	0/2		0/1	2/2		2/2		2									28:06
8	ARDERIUS Silvia Eugenia	0/1	0			0/1														17:00
15	ECHEVERRIA Maitane	1/3	33		1/3															20:51
16	CASTELLANOS Mercedes																			16:17
17	GUTIERREZ Jennifer Maria	2/3	67		1/1			1/2										1		58:25
22	GONZALEZ Lara (C)																	1		27:28
23	ARCOS Paula	1/4	25					1/1	0/3		4	1		1				1		37:38
24	TCHAPCHET Lysa	0/3	0	0/2				0/1			2	1	1		1			1		42:44
33	GASSAMA Kaba	0/1	0	0/1							2		2					1		25:47
58	PRIETO Maria	0/1	0			0/1						1								3:51
86	CABRAL Alexandrina	1/3	33	0/1		0/1	1/1					1	3							27:20
99	GONZALEZ Mireya	4/9	44	1/1		0/4	3/3		0/1		2	1								34:08
Bench/Team																				
Totals		18/40	45	1/7	7/9	0/8	6/6	2/4	2/6		12	6	6	2	1			5		

Goalkeepers		Total Shots		6m Shots		Wing Shots		9m Shots		7m Shots		Fast Breaks		Breakthroughs	
No.	Name	S/S	%	S/S	%	S/S	%	S/S	%	S/S	%	S/S	%	S/S	%
1	WIGGINS Nicole	9/29	31	2/9	22	2/5	40	2/6	33	0/1	0	0/1	0	3/7	43
16	CASTELLANOS Mercedes	1/9	11			0/2	0	0/1	0	1/2	50	0/1	0	0/3	0
EG		1													
Totals		10/39	26	2/9	22	2/7	29	2/7	29	1/3	33	0/2	0	3/10	30

Team Shots	Goals	Saves	Missed	Post	Blocked	Total	%
6m Shots	1	3	3			7	14
Wing Shots	7	1	1			9	78
9m Shots		5	2	1		8	0
7m Shots	6				N/A	6	100
Fast Breaks	2	2				4	50
Breakthroughs	2	4				6	33
Empty Goal		N/A					
Totals	18	15	6	1		40	45

Number of Attacks: 50, Scoring Efficiency: 36%



Match Team Statistics

Statistiques du match par équipe

Match 3

ESP 18 - 29 BRA
(10 - 15) (8 - 14)

Referees: KURTAGIC M / WETTERWIK M (SWE)

ESP - Spain

Shots Distribution

Players

Goals / Shots

1 WIGGINS N	2 LOPEZ M	6 CAMPOS C	8 ARDERIUS SE	15 ECHEVERRIA M	16 CASTELLANOS M	17 GUTIERREZ JM
	1/1			0/1		0/1
		1/1		1/1		
	2/2	1/1				1/1
		1/1	1/3			
		1-Missed		1-Missed		
22 GONZALEZ L	23 ARCOS P	24 TCHAPTCHET L	33 GASSAMA K	58 PRIETO M	86 CABRAL A	99 GONZALEZ M
	0/1			0/1		0/1
		0/1	0/1		0/1	1/1
	0/1				1/1	0/1
		0/1				2/3
		1-Missed	1-Missed		1-Missed	1-Post

Team

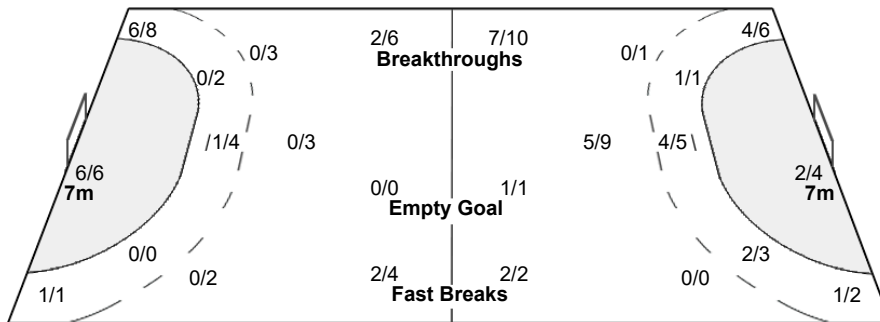
Goals / Shots

1/1	0/3	2/4
2/3	0/2	2/4
6/7	4/7	1/2

6-Missed 1-Post

Offence

Defence



Goalkeepers

Saves / Shots

0/4	0/1	0/6
2/5	2/2	3/6
0/6	2/4	1/5

1 WIGGINS N

0/3	0/1	0/3
2/5	2/2	2/3
0/5	2/2	1/5

16 CASTELLANOS M

0/1		0/3
		1/3
0/1	0/1	



Match Team Statistics

Statistiques du match par équipe

Match 3

ESP 18 - 29 BRA
(10 - 15) (8 - 14)

Referees: KURTAGIC M / WETTERWIK M (SWE)

BRA - Brazil

Players		Shots									Offence			Defence		Punishments			TP	
No.	Name	G/S	%	6m	Wing	9m	7m	FB	BT	EG	AS	TO	TF	ST	BS	YC	2Min	RC		BC
1	MORESCHI Gabriela											1								55:02
2	de PAULA Bruna (C)	6/9	67			2/4		2/2	2/3		4	1	2							35:11
6	FERNANDES Mariane	1/3	33			1/2			0/1		1									12:47
7	ARAUJO FROSSARD Tamires	4/5	80	3/4						1/1								1		49:05
10	QUINTINO Jessica	1/2	50		1/1		0/1					1								33:30
20	ARAUJO Larissa	4/5	80		4/5															47:45
21	CARDOSO Adriana	1/2	50		0/1		1/1						1							19:42
23	GUARIEIRO Giulia	4/5	80	2/2		1/1			1/2		1		1	1				2		55:04
30	BITOLO Gabriela	1/3	33			0/1	1/2													4:59
36	AROUNIAN Marcela																	2		18:56
42	LOPES Jhennifer	1/1	100	1/1										1						28:39
49	MATIELI Patricia	6/7	86	1/2		1/1			4/4		4	2		1						48:46
77	ROSA Kelly	0/2	0		0/1	0/1														10:10
87	de ARRUDA Renata																			0:24
Bench/Team													1							
Totals		29/44	66	7/9	5/8	5/10	2/4	2/2	7/10	1/1	10	5	5	3				5		

Goalkeepers		Total Shots		6m Shots		Wing Shots		9m Shots		7m Shots		Fast Breaks		Breakthroughs	
No.	Name	S/S	%	S/S	%	S/S	%	S/S	%	S/S	%	S/S	%	S/S	%
1	MORESCHI Gabriela	14/31	45	3/4	75	1/8	13	4/4	100	0/5	0	2/4	50	4/6	67
87	de ARRUDA Renata	0/1	0							0/1	0				
Totals		15/33	45	3/4	75	1/8	13	5/5	100	0/6	0	2/4	50	4/6	67

Team Shots	Goals	Saves	Missed	Post	Blocked	Total	%
6m Shots	7	2				9	78
Wing Shots	5	2	1			8	63
9m Shots	5	2	2		1	10	50
7m Shots	2	1		1	N/A	4	50
Fast Breaks	2					2	100
Breakthroughs	7	3				10	70
Empty Goal	1	N/A				1	100
Totals	29	10	3	1	1	44	66

Number of Attacks: 52, Scoring Efficiency: 56%



Match Team Statistics
Statistiques du match par équipe

Match 3

ESP 18 - 29 BRA
(10 - 15) (8 - 14)

Referees: KURTAGIC M / WETTERWIK M (SWE)

BRA - Brazil

Shots Distribution

Players

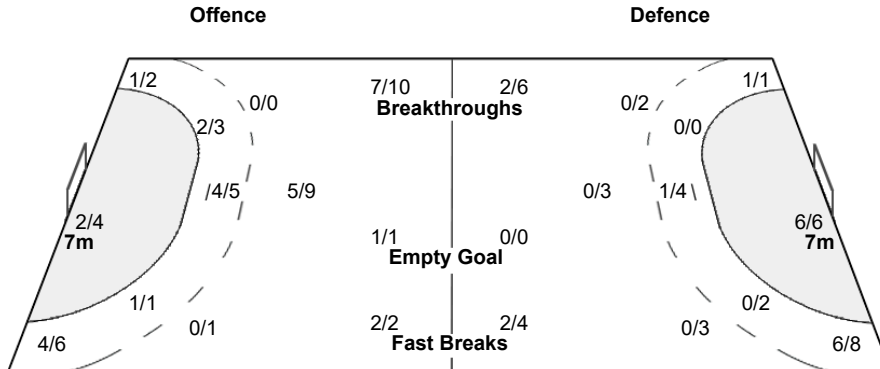
Goals / Shots

1 MORESCHI G	2 de PAULA B	6 FERNANDES M	7 ARAUJO FROSSARD T	10 QUINTINO J	20 ARAUJO L	21 CARDOSO A
	2/2		1/1	1/1	2/2	1/1
	1/1	1/1 0/1	0/1		0/1	
	1/1 1/1 1/2	0/1	1/1 1/1 1/1		1/1	
	1-Missed 1-Blocked			1-Post		1-Missed

23 GUARIEIRO G	30 BITOLO G	36 AROUNIAN M	42 LOPES J	49 MATIELI P	77 ROSA K	87 de ARRUDA R
2/2	1/1					
1/2	0/2			2/2	0/1	
			1/1	4/4 0/1		
				1-Missed		

Team
Goals / Shots

4/4	1/1	6/6
3/5	0/2	3/6
6/6	2/4	4/5
3-Missed	1-Post	1-Blocked



Goalkeepers
Saves / Shots

0/1	3/3	2/4
1/3	2/2	2/4
1/7	3/7	1/2

1 MORESCHI G

0/1	3/3	1/3
1/2	2/2	2/4
1/7	3/7	1/2

87 de ARRUDA R

0/1		

Legend:

(C) Captain	% Efficiency	2Min 2-Minute Suspensions	6m 6-metre Shots	7m 7-metre Shots
9m 9-metre Shots	AS Assists	BC Blue Cards	BS Blocked Shots	BT Breakthroughs
D Direct Red Card	EG Empty Goal	FB Fast Breaks	G/S Goals/Shots	N/A Not Applicable
No. Uniform Number	RC Red Cards	S/S Saves/Shots	ST Steals	TF Technical Faults
TO Turnovers	TP Time Played	Wing Wing Shots	X Red Card After Third 2-Minute Suspension	
YC Yellow Cards				