



26th IHF Women's World Championship

Denmark • Norway • Sweden

Final Round, Quarterfinals



Match Team Statistics

Match No. 99

Sweden 27 - 20 Germany

(16 - 6) (11 - 14)

13.12.2023. 17:30

Attendance: 6613

Jyske Bank Boxen

Referees: Mads Hansen (DEN) / Jesper Madsen (DEN)

Shot distribution by player

3 N. Koppang

4 O. Mellegard

1/1		3/3
0/1		1/1

6 C. Strömberg

7 L. Blohm

0/1		1/1
2/2		1/1

1/1 lob

8 J. Roberts

	0/1	1/1
0/1		
0/1		4/4

17 N. Dano

1 block

19 A. Lagerquist

23 E. Lindqvist

0/1	0/1	
		0/1

1 post 1 block

24 N. Hagman

	2/2	
1/1		2/2

29 K. Thorleifsdottir

35 S. Hvenfelt

38 E. Hansson

		1/1
	1/1	0/1

42 J. Carlson

0/1	0/1	2/2
0/1	0/1	
2/3	0/1	

54 T. Axner

		1/1

TOTAL

1/4	2/5	9/9
0/2	0/1	
5/8	1/2	8/10

1 post 2 block 1/1 lob

Saves distribution goalkeepers

1 J. Bundsen

0/2	1/2	2/4
	2/2	1/2
5/12	2/3	1/5

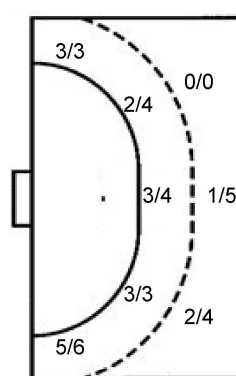
21 E. Eriksson

TOTAL

0/2	1/2	2/4
	2/2	1/2
5/12	2/3	1/5

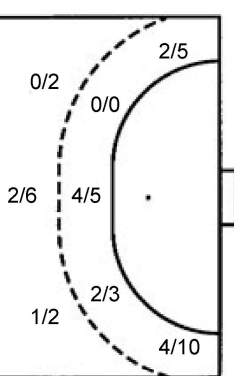
Shots by position

ATTACK



7m penalties 2/3
Fastbreak 2/2
Breakthrough 4/11
Long dist. 0/0

DEFENSE



7m penalties 2/3
Fastbreak 0/0
Breakthrough 3/10
Long dist. 0/0

Shooting statistics

Position	Goals	Sav.	Miss.	Post	Blk.	Total	%
Back (9m)	3	4	0	0	2	9	33
Line (6m)	8	3	0	0	0	11	73
Wing	8	1	0	0	0	9	89
7m penalties	2	1	0	0	0	3	67
Fastbreak	2	0	0	0	0	2	100
Breakthrough	4	6	0	1	0	11	36
Total	27	15	0	1	2	45	60

Jersey number Tot. Total shooting 6m 6m (line) shooting 9m 9m shooting Wng Wing shooting FB Fastbreak sh. 7m 7m penalty sh.
Brk. Breakthrough sh. LD Long distance sh. As. Assists PC Pass clear chance E7 Earned 7m pen. TF Technical faults St. Steals
2m 2m punishments C7. Committed 7m E2 Earned 2m pun. YC. Yellow cards R/B Red/Blue cards Blk. Blocks S Starting Line-up

Handball statistics and livescore by Toma-soft ltd (www.toma-soft.hr)



26th IHF Women's World Championship

Denmark • Norway • Sweden

Final Round, Quarterfinals



Match Team Statistics

Match No. 99

Sweden 27 - 20 Germany

(16 - 6) (11 - 14)

13.12.2023. 17:30

Attendance: 6613

Jyske Bank Boxen

Referees: Mads Hansen (DEN) / Jesper Madsen (DEN)

Germany

Players		Goals / shots										Attack				Def.			Penalties				TP		
#	Surname and name	S	Tot.	%	9m	6m	Wing	7m	FB	Brk.	LD	As.	PC	E7	E2	TF	St.	C7	Blk	YC	2m	R		B	
3	BERGER Amelie		4/8	50			4/8																		35:10
4	GRIJSEELS Alina		4/9	44	1/3	0/1		2/2		1/3			2	1			3	1							42:38
7	SCHMELZER Meike		2/3	67		2/3						1					1								24:43
9	ANTL Lisa Carolin		1/1	100		1/1																			9:49
10	THOMAIER Mareike		0/1	0				0/1																	0:20
11	SMITS Xenia	S	0/4	0	0/1					0/3		1	3	2			3	1	1						45:39
20	BÖLK Emily	S	1/4	25	0/2					1/2		3	2				2	2	1	1					52:11
22	WEIGEL Maren	S	0/1	0	0/1																				7:33
23	LOTT Annika		1/3	33	0/1	1/1				0/1		1	2			1			1						11:02
24	WACHTER Sarah											1													41:52
29	DÖLL Antje	S	1/3	33			1/3																		44:29
30	BEHREND Jenny	S	0/2	0			0/2										1	1							24:50
42	FILTER Katharina	S																							18:08
77	LEUCHTER Viola Charlotte		4/4	100	2/2	1/1				1/1		4	1			1									15:12
93	BEHNKE Julia	S																							31:13
95	STOCKSCHLÄDER Johanna Maria		2/3	67		1/1	1/2																		15:11
	Team / bench																								
	UKUPNO		20/46	43	3/10	6/8	6/15	2/3	0/0	3/10	0/0	11	10	3	0	10	6	3	2	0	0	0	0	0	0

Goalkeepers		Saves / shots									
#	Surname and name	Tot.	%	9m	6m	Wing	7m	FB	Brk.	LD	
24	WACHTER Sarah	13/31	42	4/5	3/9	0/5	0/1	0/2	6/9		
42	FILTER Katharina	2/11	18	0/2	0/2	1/4	1/2		0/1		
	TOTAL	15/42	36	4/7	3/11	1/9	1/3	0/2	6/10	0/0	

Coach: Markus Gaugisch

Number of attacks: 56, Efficiency: 36%, Average Duration: 31.18 seconds

Attack by type of defense

	Shots	9m	6m	Wing	TF	E7	E2
On def. 6-0	15/37	2/8	5/7	5/12	10	3	0
On def. 5-1	2/3	1/2	1/1	0/0	0	0	0
Fastbreak	0/0				0	0	0

Defense by type

	Total	9m	6m	Wing	Stl.	C7	2m
Def. 6-0	16/30	2/7	5/7	6/7	5	1	0
Def. 5-1	5/7	1/2	2/3	2/2	1	1	0
Def. 4-2	0/1	0/0	0/0	0/0	0	1	0
Def. 3-3	2/2	0/0	1/1	0/0	0	0	0
Fastbreak	2/2				0	0	0

Attack with superiority / minority / goalkeeper out

	Attack				Reaction		
	Att.	Eff.	Shots	TF	FB	LD	Tot.
6 on 6	56	36%	20/46	10			

Player superiority / GK out counted at the end of attack (in case it changes during attack)

Defense with superiority / minority / goalkeeper out

	Attack				Reaction		
	Att.	Eff.	Shots	TF	FB	LD	Tot.
6 on 6	57	47%	27/41	16			

Numbers show attacking numbers of opponent. Lower efficiency of opponent means better defense of this team

Jersey number Tot. Total shooting 6m 6m (line) shooting 9m 9m shooting Wng Wing shooting FB Fastbreak sh. 7m 7m penalty sh.
 Brk. Breakthrough sh. LD Long distance sh. As. Assists PC Pass clear chance E7 Earned 7m pen. TF Technical faults St. Steals
 2m 2m punishments C7. Committed 7m E2 Earned 2m pun. YC. Yellow cards R/B Red/Blue cards Blk. Blocks S Starting Line-up



26th IHF Women's World Championship

Denmark • Norway • Sweden

Final Round, Quarterfinals



Match Team Statistics

Match No. 99

Sweden 27 - 20 Germany

(16 - 6) (11 - 14)

13.12.2023. 17:30

Attendance: 6613

Jyske Bank Boxen

Referees: Mads Hansen (DEN) / Jesper Madsen (DEN)

Shot distribution by player

3 A. Berger

1/1	1/1	
0/2		1/1

1 post 1/2 lob

4 A. Grijseels

	0/1	1/1
2/3		1/1

3 miss.

7 M. Schmelzer

1/1		

1 post 1/1 lob

9 L. Antl

		1/1

1 miss.

10 M. Thomaier

1 post

11 X. Smits

	0/1	
	0/1	0/1

1 miss.

20 E. Bölk

		0/1
1/2		

1 post

22 M. Weigel

	0/1	

23 A. Lott

1/2	0/1	

29 A. Döll

		0/1
1/1		

1 miss.

30 J. Behrend

		0/1

1 miss.

77 V. Leuchter

1/1		2/2
		1/1

93 J. Behnke

95 J. Stockschröder

1/1	1/1	

1 miss.

TOTAL

2/2	1/2	2/4
	0/2	1/2
7/12	1/3	4/5

4 post 7 miss. 2/3 lob

Saves distribution goalkeepers

24 S. Wachter

3/4	3/4	0/7
2/2	1/1	
2/6	1/1	1/5

42 K. Filter

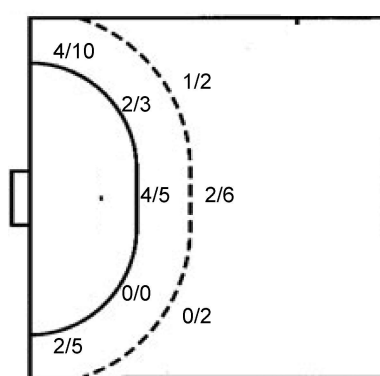
	0/1	0/2
1/2	0/1	1/5

TOTAL

3/4	3/5	0/9
2/2	1/1	
3/8	1/2	2/10

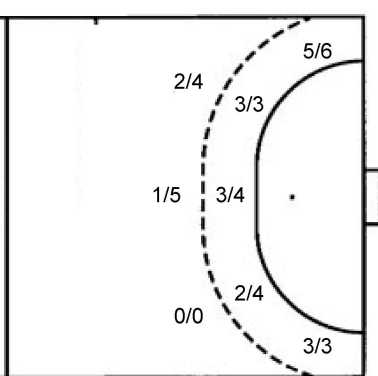
Shots by position

ATTACK



7m penalties 2/3
Fastbreak 0/0
Breakthrough 3/10
Long dist. 0/0

DEFENSE



7m penalties 2/3
Fastbreak 2/2
Breakthrough 4/11
Long dist. 0/0

Shooting statistics

Position	Goals	Sav.	Miss.	Post	Blk.	Total	%
Back (9m)	3	5	1	1	0	10	30
Line (6m)	6	0	1	1	0	8	75
Wing	6	5	3	1	0	15	40
7m penalties	2	0	0	1	0	3	67
Fastbreak	0	0	0	0	0	0	0
Breakthrough	3	5	2	0	0	10	30
Total	20	15	7	4	0	46	43

Jersey number Tot. Total shooting 6m 6m (line) shooting 9m 9m shooting Wng Wing shooting FB Fastbreak sh. 7m 7m penalty sh.
Brk. Breakthrough sh. LD Long distance sh. As. Assists PC Pass clear chance E7 Earned 7m pen. TF Technical faults St. Steals
2m 2m punishments C7. Committed 7m E2 Earned 2m pun. YC. Yellow cards R/B Red/Blue cards Blk. Blocks S Starting Line-up

Handball statistics and livescore by Toma-soft ltd (www.toma-soft.hr)

