





# 26th IHF Women's World Championship

Denmark • Norway • Sweden

Final Round, Quarterfinals



## Match Team Statistics

Match No. 98

## Netherlands 23 - 30 Norway

(11 - 12) (12 - 18)

12.12.2023. 20:30

Attendance: 7514

Trondheim Spektrum

Referees: Maike Merz (GER) / Tanja Kuttler (GER)

### Shot distribution by player

6 L. Van Der Heijden

0/1		

1 block

8 L. Abbingh

		1/1
		0/1
		1/3

1 block

9 L. Nüsser

	1/1	

12 B. Van Wetering

1/1		
		1/2

13 Y. Broch


16 T. Haggerty


18 K. Dulfer

0/1		
1/1		

20 I. Smits

		0/1

22 Z. Sprengers

0/1		
2/2	0/1	1/1

26 A. Malestein

2/2		0/2
		2/3

31 K. Vollebregt


44 N. Van Der Vliet

1/1		
1/1		

1 post 1 miss.

48 D. Housheer

1/1		1/2
0/1		
1/1		1/3

2 miss.

79 E. Polman

1/1		
0/2	1/1	

1 post 1/1 lob

### TOTAL

3/4		2/3
3/5		0/3
5/8	2/3	6/13

2 post 3 miss. 2 block 1/1 lob

### Saves distribution goalkeepers

30 R. Duijndam

0/1		1/2
		0/1
0/2		1/2

38 Y. Ten Holte

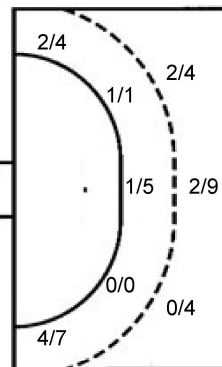
4/7	0/1	1/3
0/1	2/3	
3/9	0/1	1/6

### TOTAL

4/8	0/1	2/5
0/1	2/3	0/1
3/11	0/1	2/8

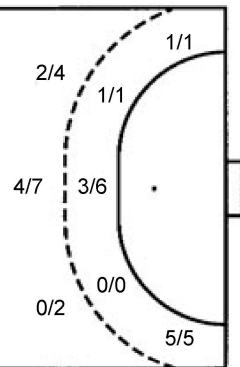
### Shots by position

#### ATTACK



7m penalties 2/2  
Fastbreak 2/2  
Breakthrough 6/9  
Long dist. 1/1

#### DEFENSE



7m penalties 4/5  
Fastbreak 5/6  
Breakthrough 4/9  
Long dist. 1/1

### Shooting statistics

Position	Goals	Sav.	Miss.	Post	Blk.	Total	%
Back (9m)	4	9	2	0	2	17	24
Line (6m)	2	2	1	1	0	6	33
Wing	6	5	0	0	0	11	55
7m penalties	2	0	0	0	0	2	100
Fastbreak	2	0	0	0	0	2	100
Breakthrough	6	2	0	1	0	9	67
<b>Total</b>	<b>22</b>	<b>18</b>	<b>3</b>	<b>2</b>	<b>2</b>	<b>47</b>	<b>47</b>

# Jersey number Tot. Total shooting 6m 6m (line) shooting 9m 9m shooting Wng Wing shooting FB Fastbreak sh. 7m 7m penalty sh.  
Brk. Breakthrough sh. LD Long distance sh. As. Assists PC Pass clear chance E7 Earned 7m pen. TF Technical faults St. Steals  
2m 2m punishments C7. Committed 7m E2 Earned 2m pun. YC. Yellow cards R/B Red/Blue cards Blk. Blocks S Starting Line-up

Handball statistics and livescore by Toma-soft ltd (www.toma-soft.hr)



# 26th IHF Women's World Championship

Denmark • Norway • Sweden

Final Round, Quarterfinals



Match Team Statistics

Match No. 98

## Netherlands 23 - 30 Norway

(11 - 12) (12 - 18)

12.12.2023. 20:30

Attendance: 7514

Trondheim Spektrum

Referees: Maike Merz (GER) / Tanja Kuttler (GER)

### Norway

Players		Goals / shots									Attack					Def.			Penalties			TP		
#	Surname and name	S	Tot.	%	9m	6m	Wing	7m	FB	Brk.	LD	As.	PC	E7	E2	TF	St.	C7	Blk	YC	2m		R	B
6	AARDAHL Maren Nyland	S	2/4	50		2/3				0/1											2			45:47
7	SKOGRAND Stine Ruscetta	S	9/9	100			5/5	4/4										2						56:30
9	MORK Nora	S	3/6	50	1/3			0/1	1/1	1/1		4	2	2		4	1				1			41:40
10	OFTEDAL Stine Bredal	S	3/5	60	1/1					2/4		3	3	3	1	3					1	1		36:28
12	SOLBERG Silje Margaretha	S										1												45:30
13	BRATTSET DALE Kari		1/1	100		1/1															1			18:46
14	BREISTOL Kristine																							
15	INGSTAD Vilde Mortensen		0/2	0		0/2										1	1							15:37
16	LUNDE Katrine																							9:33
21	BAKKERUD Ingvild Kristiansen		5/7	71	3/5				1/1		1/1	1				1	1		3					43:01
22	NOVAK Kristina Sirum																							0:02
23	HERREM Camilla	S	1/2	50					1/2			2				1	2				1			37:58
24	SOLBERG-ISAKSEN Sanna Charlotte		2/2	100			1/1		1/1															25:04
25	REISTAD Henny Ella	S	4/8	50	1/4	1/1			1/1	1/2		4			1	3					1			41:53
26	HOVDEN Emilie Margrethe																							
33	DEILA Thale Rushfeldt		0/1	0						0/1														2:09
	Team / bench																							
	UKUPNO		30/47	64	6/13	4/7	6/6	4/5	5/6	4/9	1/1	15	5	5	2	13	5	2	3	1	7	0	0	

Goalkeepers		Saves / shots								
#	Surname and name	Tot.	%	9m	6m	Wing	7m	FB	Brk.	LD
12	SOLBERG Silje Margaretha	14/33	42	7/11	2/4	3/8	0/1	0/2	2/7	
16	LUNDE Katrine	4/7	57	2/2		2/3	0/1		0/1	
	TOTAL	18/40	45	9/13	2/4	5/11	0/2	1/2	2/8	0/0

Coach: Thorir Hergeirsson

Number of attacks: 60, Efficiency: 50%, Average Duration: 27.35 seconds

### Attack by type of defense

	Shots	9m	6m	Wing	TF	E7	E2
On def. 6-0	16/30	6/12	2/5	5/5	13	5	2
On def. 5-1	4/5	0/1	2/2	1/1	0	0	0
Fastbreak	5/6				0	0	0

### Defense by type

	Total	9m	6m	Wing	Stl.	C7	2m
Def. 6-0	18/43	4/17	2/6	6/11	5	2	0
Fastbreak	2/2				0	0	7

### Attack with superiority / minority / goalkeeper out

	Attack				Reaction		
	Att.	Eff.	Shots	TF	FB	LD	Tot.
7 on 6 (GK out)	2	50%	1/1	1	0/0	0/0	0/0
6 on 6 (GK out)	1	0%	0/1	0	0/0	0/0	0/0
5 on 6 (GK out)	2	0%	0/1	1	0/0	0/0	0/0
6 on 6	46	48%	22/37	9			
5 on 6	1	100%	1/1	0			
4 on 6	1	0%	0/0	1			
6 on 5 (GK out)	2	50%	1/1	1	0/0	1/1	1/1
6 on 5	4	100%	4/4	0			
5 on 5	1	100%	1/1	0			

Player superiority / GK out counted at the end of attack (in case it changes during attack)

### Defense with superiority / minority / goalkeeper out

	Attack				Reaction		
	Att.	Eff.	Shots	TF	FB	LD	Tot.
7 on 6 (GK out)	5	60%	3/5	0	0/0	1/1	1/1
6 on 6 (GK out)	1	0%	0/1	0	0/0	0/0	0/0
6 on 5 (GK out)	1	100%	1/1	0	0/0	0/0	0/0
6 on 6	41	32%	13/29	12			
6 on 5	6	33%	2/5	1			
6 on 4	4	50%	2/2	2			
5 on 5	2	100%	2/2	0			

Numbers show attacking numbers of opponent. Lower efficiency of opponent means better defense of this team

# Jersey number Tot. Total shooting 6m 6m (line) shooting 9m 9m shooting Wng Wing shooting FB Fastbreak sh. 7m 7m penalty sh.  
 Brk. Breakthrough sh. LD Long distance sh. As. Assists PC Pass clear chance E7 Earned 7m pen. TF Technical faults St. Steals  
 2m 2m punishments C7. Committed 7m E2 Earned 2m pun. YC. Yellow cards R/B Red/Blue cards Blk. Blocks S Starting Line-up



# 26th IHF Women's World Championship

Denmark • Norway • Sweden

Final Round, Quarterfinals



## Match Team Statistics

Match No. 98

## Netherlands 23 - 30 Norway

(11 - 12) (12 - 18)

12.12.2023. 20:30

Attendance: 7514

Trondheim Spektrum

Referees: Maike Merz (GER) / Tanja Kuttler (GER)

### Shot distribution by player

#### 6 M. Aardahl

0/1	1/1	
	0/1	

1/1 lob

#### 7 S. Skogrand

		1/1
		1/1
4/4		2/2

1/1 lob

#### 9 N. Mork

2/3		1/1
	0/1	
0/1		

#### 10 S. Oftedal

0/1		0/1
2/2	1/1	

#### 13 K. Brattset Dale

		1/1

#### 14 K. Breistol


#### 15 V. Ingstad

		0/1
		0/1

#### 21 I. Bakkerud

1/1		
	2/2	
1/1		1/1

2 miss.

#### 22 K. Novak


#### 23 C. Herrem

0/1		1/1

#### 24 S. Solberg-Isaksen

		1/1

1/1 lob

#### 25 H. Reistad

1/2		1/1
1/1		
1/2		0/1

1 post

#### 26 E. Hovden


#### 33 T. Deila


1 miss.

### TOTAL

4/8	1/1	3/5
1/1	2/4	1/1
8/11	1/1	6/8

1 post 3 miss. 3/3 lob

### Saves distribution goalkeepers

#### 12 S. Solberg

1/4		1/3
1/4		2/2
3/8	0/2	6/9

#### 16 K. Lunde

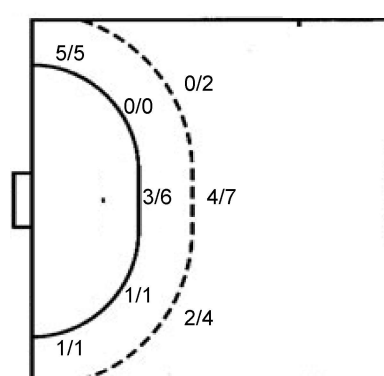
1/1		1/1
	1/1	1/4

### TOTAL

1/4		1/3
2/5		3/3
3/8	1/3	7/13

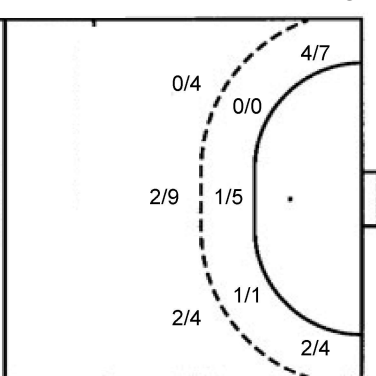
### Shots by position

#### ATTACK



7m penalties 4/5  
Fastbreak 5/6  
Breakthrough 4/9  
Long dist. 1/1

#### DEFENSE



7m penalties 2/2  
Fastbreak 2/2  
Breakthrough 6/9  
Long dist. 1/1

### Shooting statistics

Position	Goals	Sav.	Miss.	Post	Blk.	Total	%
Back (9m)	6	4	2	1	0	13	46
Line (6m)	4	3	0	0	0	7	57
Wing	6	0	0	0	0	6	100
7m penalties	4	1	0	0	0	5	80
Fastbreak	5	1	0	0	0	6	83
Breakthrough	4	4	1	0	0	9	44
<b>Total</b>	<b>29</b>	<b>13</b>	<b>3</b>	<b>1</b>	<b>0</b>	<b>46</b>	<b>63</b>

# Jersey number Tot. Total shooting 6m 6m (line) shooting 9m 9m shooting Wng Wing shooting FB Fastbreak sh. 7m 7m penalty sh.  
Brk. Breakthrough sh. LD Long distance sh. As. Assists PC Pass clear chance E7 Earned 7m pen. TF Technical faults St. Steals  
2m 2m punishments C7. Committed 7m E2 Earned 2m pun. YC. Yellow cards R/B Red/Blue cards Blk. Blocks S Starting Line-up

Handball statistics and livescore by Toma-soft ltd (www.toma-soft.hr)

