



26th IHF Women's World Championship

Denmark • Norway • Sweden

Main Round III, 3. round



Match Team Statistics

Match No. 96

Germany 28 - 30 Denmark

(13 - 15) (15 - 15)

11.12.2023. 20:30

Attendance: 8514

Jyske Bank Boxen

Referees: Bojan Lah (SLO) / David Sok (SLO)

Germany

#	Surname and name	S	Goals / shots									Attack					Def.			Penalties				TP	
			Tot.	%	9m	6m	Wing	7m	FB	Brk.	LD	As.	PC	E7	E2	TF	St.	C7	Blk	YC	2m	R	B		
3	BERGER Amelie	S	1/1	100			1/1																		25:19
4	GRIJSEELS Alina		0/2	0	0/1			0/1							1		1		4						23:01
7	SCHMELZER Meike																								8:07
9	ANTL Lisa Carolin		3/3	100		3/3																			27:10
10	THOMAIER Mareike		1/3	33				1/3																	0:48
11	SMITS Xenia	S	4/5	80	1/2					3/3				4	1	2	2	2	1	2	1		1		50:05
20	BÖLK Emily	S	5/7	71	1/3			2/2		2/2				2	2			2	3		1	3			40:10
22	WEIGEL Maren	S	1/3	33	0/2		1/1							3				1				1			30:40
23	LOTT Annika		3/6	50	1/4		1/1			1/1				1		1		1	1	1		1			24:25
24	WACHTER Sarah																								0:36
29	DÖLL Antje	S	2/3	67			2/2		0/1																32:32
30	BEHREND Jenny		2/2	100			1/1		1/1									1	1	1					33:02
42	FILTER Katharina	S																							54:37
77	LEUCHTER Viola Charlotte		2/4	50	1/3					1/1															6:39
93	BEHNKE Julia	S	3/4	75		3/4								1		2	1								35:46
95	STOCKSCHLÄDER Johanna Maria		1/1	100			1/1							1					1						27:03
Team / bench																		1							
UKUPNO			28/44	64	4/15	6/7	7/7	3/6	1/2	7/7	0/0			13	3	6	3	12	3	8	1	1	6	0	0

#	Surname and name	Saves / shots								
		Tot.	%	9m	6m	Wing	7m	FB	Brk.	LD
24	WACHTER Sarah	0/3	0				0/3			
42	FILTER Katharina	11/38	29	3/6	0/3	4/10	0/5	0/1	4/13	
TOTAL		11/41	27	3/6	0/3	4/10	0/8	0/1	4/13	0/0

Coach: Markus Gaugisch

Number of attacks: 54, Efficiency: 52%, Average Duration: 34.57 seconds

Attack by type of defense

	Shots	9m	6m	Wing	TF	E7	E2
On def. 6-0	24/36	4/15	6/7	7/7	12	6	3
Fastbreak	1/2				0	0	0

Defense by type

	Total	9m	6m	Wing	Stl.	C7	2m
Def. 6-0	20/36	3/9	3/3	5/10	3	8	1
Def. 5-1	1/2	0/0	0/0	1/2	0	0	0
Fastbreak	1/1				0	0	5

Attack with superiority / minority / goalkeeper out

	Attack				Reaction		
	Att.	Eff.	Shots	TF	FB	LD	Tot.
7 on 6 (GK out)	5	60%	3/5	0	0/0	0/0	0/0
7 on 5 (GK out)	1	100%	1/1	0	0/0	0/0	0/0
6 on 6 (GK out)	5	40%	2/3	2	0/0	0/0	0/0
5 on 6 (GK out)	1	0%	0/1	0	0/0	0/0	0/0
6 on 6	37	49%	18/28	9			
6 on 5	5	80%	4/4	1			

Player superiority / GK out counted at the end of attack (in case it changes during attack)

Defense with superiority / minority / goalkeeper out

	Attack				Reaction		
	Att.	Eff.	Shots	TF	FB	LD	Tot.
7 on 6 (GK out)	1	100%	1/1	0	0/0	0/0	0/0
6 on 6 (GK out)	4	50%	2/3	1	0/0	0/0	0/0
6 on 6	38	55%	21/31	7			
6 on 5	10	60%	6/10	0			

Numbers show attacking numbers of opponent. Lower efficiency of opponent means better defense of this team

Jersey number Tot. Total shooting 6m 6m (line) shooting 9m 9m shooting Wng Wing shooting FB Fastbreak sh. 7m 7m penalty sh.
 Brk. Breakthrough sh. LD Long distance sh. As. Assists PC Pass clear chance E7 Earned 7m pen. TF Technical faults St. Steals
 2m 2m punishments C7. Committed 7m E2 Earned 2m pun. YC. Yellow cards R/B Red/Blue cards Blk. Blocks S Starting Line-up



26th IHF Women's World Championship

Denmark • Norway • Sweden

Main Round III, 3. round



Match Team Statistics

Match No. 96

Germany 28 - 30 Denmark

(13 - 15) (15 - 15)

11.12.2023. 20:30

Attendance: 8514

Jyske Bank Boxen

Referees: Bojan Lah (SLO) / David Sok (SLO)

Shot distribution by player

3 A. Berger

	1/1	

4 A. Grijseels

	0/1	

1 block

7 M. Schmelzer

9 L. Antl

		1/1
1/1		1/1

10 M. Thomaier

0/1		1/1

1 post

11 X. Smits

1/1		
1/1		
1/1		1/1

1 miss.

20 E. Bölk

1/1		1/1
1/1		
1/1	1/1	

1 post 1 block

22 M. Weigel

		1/2
		0/1

23 A. Lott

0/1		
1/1		2/2

1 miss. 1 block

29 A. Döll

		0/1
1/1		

1/1 lob

30 J. Behrend

1/1		
		1/1

77 V. Leuchter

2/3		
		0/1

93 J. Behnke

1/1		1/1
	1/1	

1 miss.

95 J. Stockschröder

1/1		

TOTAL

3/4		3/4
6/8		2/3
5/5	3/4	5/7

2 post 3 miss. 3 block 1/1 lob

Saves distribution goalkeepers

24 S. Wachter

0/1		0/1

42 K. Filter

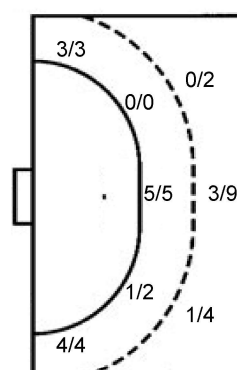
3/7	1/2	1/2
0/4	1/1	1/4
1/5	0/1	3/10

TOTAL

3/7	1/2	1/2
0/4	1/1	1/4
1/6	0/1	3/11

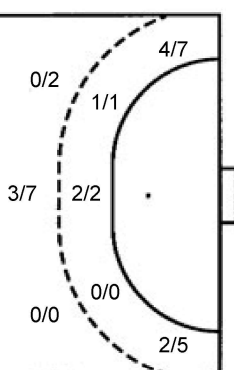
Shots by position

ATTACK



7m penalties 3/6
Fastbreak 1/2
Breakthrough 7/7
Long dist. 0/0

DEFENSE



7m penalties 8/8
Fastbreak 1/1
Breakthrough 9/14
Long dist. 0/0

Shooting statistics

Position	Goals	Sav.	Miss.	Post	Blk.	Total	%
Back (9m)	4	5	2	1	3	15	27
Line (6m)	6	0	1	0	0	7	86
Wing	7	0	0	0	0	7	100
7m penalties	3	2	0	1	0	6	50
Fastbreak	1	1	0	0	0	2	50
Breakthrough	7	0	0	0	0	7	100
Total	28	8	3	2	3	44	64

Jersey number Tot. Total shooting 6m 6m (line) shooting 9m 9m shooting Wng Wing shooting FB Fastbreak sh. 7m 7m penalty sh.
Brk. Breakthrough sh. LD Long distance sh. As. Assists PC Pass clear chance E7 Earned 7m pen. TF Technical faults St. Steals
2m 2m punishments C7. Committed 7m E2 Earned 2m pun. YC. Yellow cards R/B Red/Blue cards Blk. Blocks S Starting Line-up

Handball statistics and livescore by Toma-soft ltd (www.toma-soft.hr)



26th IHF Women's World Championship

Denmark • Norway • Sweden

Main Round III, 3. round



Match Team Statistics

Match No. 96

Germany 28 - 30 Denmark

(13 - 15) (15 - 15)

11.12.2023. 20:30

Attendance: 8514

Jyske Bank Boxen

Referees: Bojan Lah (SLO) / David Sok (SLO)

Denmark

#	Surname and name	S	Goals / shots									Attack				Def.			Penalties				TP				
			Tot.	%	9m	6m	Wing	7m	FB	Brk.	LD	As.	PC	E7	E2	TF	St.	C7	Blk	YC	2m	R		B			
1	TOFT Sandra											1															29:02
5	IVERSEN Sarah Aaberg		1/1	100		1/1						1		1				1									14:11
6	HAGESO Helena Elver		0/1	0	0/1									1	1	1											1:56
8	HANSEN Anne Mette	S	6/8	75	2/3	1/1						1	1	2		4		1		1							45:19
10	HEINDAHL Kathrine Brothmann	S	1/1	100		1/1													1								35:52
11	HAUGSTED Line		2/5	40	0/2										2			2	1		1						36:52
16	REINHARDT Althea Rebecca	S																									28:17
21	HANSEN Andrea Ulrikka Aagot		1/2	50		1/2																					1:43
23	JORGENSEN Kristina		5/7	71	0/1			5/5		0/1		1	2			1											15:22
25	JENSEN Trine Ostergaard	S	2/4	50		1/3			1/1								1							1			59:29
27	BURGAARD Louise Katharina	S	1/3	33						1/3		2		2	2												31:57
31	PETERSEN Simone Cathrine											1	2		1												2:54
32	HOJLUND Mie Enggrob	S	4/5	80	1/2					3/3		3	4	2		1		1									35:06
33	FRIIS Emma Cecilie Uhrskov	S	7/10	70		4/7	3/3									1											56:05
34	IVERSEN Rikke																	1	1					1			25:55
45	SCAGLIONE Julie Mathiesen																										
	Team / bench																										
	UKUPNO		30/47	64	3/9	3/3	6/12	8/8	1/1	9/14	0/0	10	9	8	6	8	1	6	3	1	3	0	0				

#	Surname and name	Saves / shots								
		Tot.	%	9m	6m	Wing	7m	FB	Brk.	LD
1	TOFT Sandra	4/19	21	3/7	0/1	0/5		1/2	0/4	
16	REINHARDT Althea Rebecca	4/17	24	2/2	0/5	0/2	2/5		0/3	
	TOTAL	8/36	22	5/9	0/6	0/7	2/5	1/2	0/7	0/0

Coach: Jesper Haandbak Jensen

Number of attacks: 53, Efficiency: 57%, Average Duration: 32.60 seconds

Attack by type of defense

	Shots	9m	6m	Wing	TF	E7	E2
On def. 6-0	20/36	3/9	3/3	5/10	8	8	6
On def. 5-1	1/2	0/0	0/0	1/2	0	0	0
Fastbreak	1/1				0	0	0

Defense by type

	Total	9m	6m	Wing	Stl.	C7	2m
Def. 6-0	24/36	4/15	6/7	7/7	1	6	0
Fastbreak	1/2				0	0	3

Attack with superiority / minority / goalkeeper out

	Attack				Reaction		
	Att.	Eff.	Shots	TF	FB	LD	Tot.
7 on 6 (GK out)	1	100%	1/1	0	0/0	0/0	0/0
6 on 6 (GK out)	4	50%	2/3	1	0/0	0/0	0/0
6 on 6	38	55%	21/31	7			
6 on 5	10	60%	6/10	0			

Player superiority / GK out counted at the end of attack (in case it changes during attack)

Defense with superiority / minority / goalkeeper out

	Attack				Reaction		
	Att.	Eff.	Shots	TF	FB	LD	Tot.
7 on 6 (GK out)	5	60%	3/5	0	0/0	0/0	0/0
7 on 5 (GK out)	1	100%	1/1	0	0/0	0/0	0/0
6 on 6 (GK out)	5	40%	2/3	2	0/0	0/0	0/0
5 on 6 (GK out)	1	0%	0/1	0	0/0	0/0	0/0
6 on 6	37	49%	18/28	9			
6 on 5	5	80%	4/4	1			

Numbers show attacking numbers of opponent. Lower efficiency of opponent means better defense of this team

Jersey number Tot. Total shooting 6m 6m (line) shooting 9m 9m shooting Wng Wing shooting FB Fastbreak sh. 7m 7m penalty sh.
 Brk. Breakthrough sh. LD Long distance sh. As. Assists PC Pass clear chance E7 Earned 7m pen. TF Technical faults St. Steals
 2m 2m punishments C7. Committed 7m E2 Earned 2m pun. YC. Yellow cards R/B Red/Blue cards Blk. Blocks S Starting Line-up



26th IHF Women's World Championship

Denmark • Norway • Sweden

Main Round III, 3. round



Match Team Statistics

Match No. 96

Germany 28 - 30 Denmark

(13 - 15) (15 - 15)

11.12.2023. 20:30

Attendance: 8514

Jyske Bank Boxen

Referees: Bojan Lah (SLO) / David Sok (SLO)

Shot distribution by player

5 S. Iversen

1/1		

6 H. Hageso

0/1		

8 A. Hansen

2/3		
		1/1
2/2		1/1

1 post

10 K. Heindahl

1/1		

11 L. Haugsted

	1/1	
		1/2
		0/1

1 block

21 A. Hansen

1/1		

1 post

23 K. Jorgensen

1/1	0/1	
1/1		1/1

1 miss. 2/2 lob

25 T. Jensen

0/1	0/1	
		2/2

27 L. Bargaard

0/1		1/2

31 S. Petersen

32 M. Hojlund

1/1		1/1
2/2		

1 miss.

33 E. Friis

		0/1
		1/1
1/1	1/1	3/4

1 miss. 1/1 lob

34 R. Iversen

45 J. Scaglione

TOTAL

4/7	1/2	1/2
4/4	0/1	3/4
5/6	1/1	8/11

2 post 3 miss. 1 block 3/3 lob

Saves distribution goalkeepers

1 S. Toft

0/2		1/2
1/3		1/2
0/4	0/1	1/4

16 A. Reinhardt

1/2		0/2
1/5		0/1
0/1	1/3	1/3

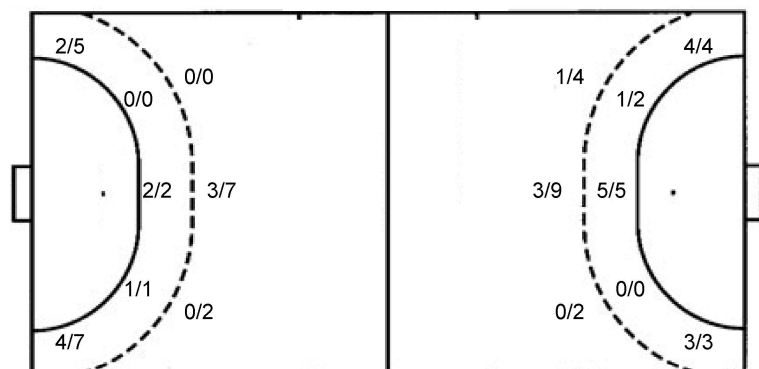
TOTAL

1/4		1/4
2/8		1/3
0/5	1/4	2/7

Shots by position

ATTACK

DEFENSE



7m penalties 8/8
Fastbreak 1/1
Breakthrough 9/14
Long dist. 0/0

7m penalties 3/6
Fastbreak 1/2
Breakthrough 7/7
Long dist. 0/0

Shooting statistics

Position	Goals	Sav.	Miss.	Post	Blk.	Total	%
Back (9m)	3	3	2	0	1	9	33
Line (6m)	3	0	0	0	0	3	100
Wing	6	4	1	1	0	12	50
7m penalties	8	0	0	0	0	8	100
Fastbreak	1	0	0	0	0	1	100
Breakthrough	9	4	0	1	0	14	64
Total	30	11	3	2	1	47	64

Jersey number Tot. Total shooting 6m 6m (line) shooting 9m 9m shooting Wng Wing shooting FB Fastbreak sh. 7m 7m penalty sh.
Brk. Breakthrough sh. LD Long distance sh. As. Assists PC Pass clear chance E7 Earned 7m pen. TF Technical faults St. Steals
2m 2m punishments C7. Committed 7m E2 Earned 2m pun. YC. Yellow cards R/B Red/Blue cards Blk. Blocks S Starting Line-up

Handball statistics and livescore by Toma-soft ltd (www.toma-soft.hr)



26th IHF Women's World Championship

Denmark • Norway • Sweden

Main Round III, 3. round



Match Team Statistics

Match No. 96

Germany 28 - 30 Denmark

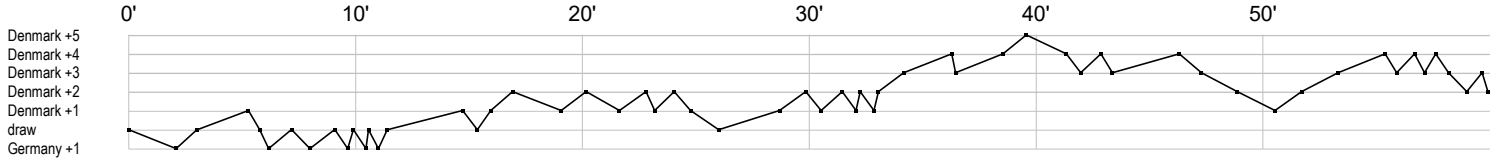
(13 - 15) (15 - 15)

11.12.2023. 20:30

Attendance: 8514

Jyske Bank Boxen

Referees: Bojan Lah (SLO) / David Sok (SLO)



Germany

3 Berger A	g
4 Grijseels A	e ft
7 Schmelzer M	t t a f
9 Antl L	g g
10 Thomaier M	g f
11 Smits X	p t g a f 2 g e ei a a b tc x c g g i a
20 Bolk E	cy a a2 f p 2 g g t c fg g p tc2
22 Weigel M	t2 a f g f a
23 Lott A	g e f f t a g f b 2c
24 Wachter S	f r
29 Döll A	f g g
30 Behrend J	bt g c g
42 Filter K	s r r s r s r r r s r r r s r r r r r s r s r s r s s r r r r r
77 Leuchter V	g g f f
93 Behnke J	e g g ei a f
95 Stockscläder	g c a

Denmark

1 Toft S	r r r r s s r r r r r r s a r r r r
5 Iversen S	a c e g
6 Hageso H	f t ei
8 Hansen A	cy e g g g g t g t e t a f f t p g
10 Heindahl K	x g
11 Haugsted L	i f g gi c c2 f f x
16 Reinhardt A	r r r r r r s r s r s r r r r s
21 Hansen A	f g
23 Jorgensen K	f a p g f g g p g t
25 Jensen T	f g f b g 2
27 Burgard L	f i a f a g e ei
31 Petersen S	i p p a
32 Højlund M	p p a g c g g g e p f e p t a a
33 Friis E	g g g t g g g g f f f
34 Iversen R	2c x
45 Scaglione J	

In game	g Goal scored	f Missed shot	a Assist	t Technical faults	b Steal
2 2min suspension	e Earned 7m	c Committed 7m	y Yellow card	r Red Card	k Blue card
i Earned 2min.	x Block	4 4min suspension	p Pass for clear chance	s Saved shot	r Received goal