





# 26th IHF Women's World Championship

Denmark • Norway • Sweden

Main Round III, 3. round



## Match Team Statistics

Match No. 94

## Japan 22 - 20 Serbia

(9 - 8) (13 - 12)

11.12.2023. 15:30

Attendance: 1979

Jyske Bank Boxen

Referees: Alexei Covalciuc (MDA) / Igor Covalciuc (MDA)

## Shot distribution by player

### 2 M. Nagata

		1/1

### 3 N. Sahara


### 4 M. Hatsumi


1/1 lob

### 6 Y. Kitahara


### 7 S. Hattori

1/1		1/1
		0/1
	1/1	

1 post 1/2 lob

### 9 C. Kasai

2/2	0/1	

### 13 K. Nakayama

1/1		1/2
1/1		2/5

1/1 lob

### 15 S. Ryu


### 20 N. Akiyama

		0/1

### 23 N. Aizawa

0/1		3/3
0/1		0/1

1 block 1/1 lob

### 24 A. Okada


### 32 H. Sasaki

		1/1
2/3		0/1

### 51 Y. Yoshidome

1/1		

### 89 S. Ishikawa


1 miss.

## TOTAL

1/2		5/5
1/1		1/4
6/8	1/2	3/8

1 post 1 miss. 1 block 4/5 lob

## Saves distribution goalkeepers

### 1 S. Kametani

0/1		0/1

### 12 A. Baba

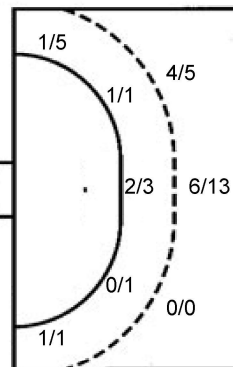
3/3	0/1	0/2
4/6	2/2	0/1
1/7	0/2	1/5

## TOTAL

3/3	0/1	0/2
4/6	2/2	0/1
1/8	0/2	1/6

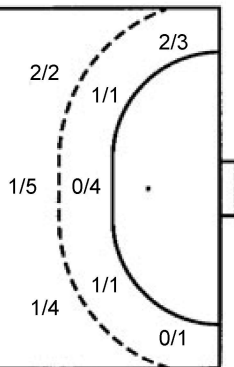
## Shots by position

### ATTACK



7m penalties	1/2
Fastbreak	3/3
Breakthrough	3/4
Long dist.	0/0

### DEFENSE



7m penalties	3/4
Fastbreak	0/0
Breakthrough	9/10
Long dist.	0/2

## Shooting statistics

Position	Goals	Sav.	Miss.	Post	Blk.	Total	%
Back (9m)	10	6	1	0	1	18	56
Line (6m)	3	2	0	0	0	5	60
Wing	2	3	0	1	0	6	33
7m penalties	1	1	0	0	0	2	50
Fastbreak	3	0	0	0	0	3	100
Breakthrough	3	1	0	0	0	4	75
<b>Total</b>	<b>22</b>	<b>13</b>	<b>1</b>	<b>1</b>	<b>1</b>	<b>38</b>	<b>58</b>

# Jersey number Tot. Total shooting 6m 6m (line) shooting 9m 9m shooting Wng Wing shooting FB Fastbreak sh. 7m 7m penalty sh.  
 Brk. Breakthrough sh. LD Long distance sh. As. Assists PC Pass clear chance E7 Earned 7m pen. TF Technical faults St. Steals  
 2m 2m punishments C7. Committed 7m E2 Earned 2m pun. YC. Yellow cards R/B Red/Blue cards Blk. Blocks S Starting Line-up

Handball statistics and livescore by Toma-soft ltd (www.toma-soft.hr)



# 26th IHF Women's World Championship

Denmark • Norway • Sweden

Main Round III, 3. round



Match Team Statistics

Match No. 94

## Japan 22 - 20 Serbia

(9 - 8) (13 - 12)

11.12.2023. 15:30

Attendance: 1979

Jyske Bank Boxen

Referees: Alexei Covalciuc (MDA) / Igor Covalciuc (MDA)

### Serbia

Players		Goals / shots										Attack				Def.			Penalties				TP		
#	Surname and name	S	Tot.	%	9m	6m	Wing	7m	FB	Brk.	LD	As.	PC	E7	E2	TF	St.	C7	Blk	YC	2m	R		B	
2	RADOSAVLJEVIĆ Sanja	S	2/4	50		0/1	1/1	1/1		0/1							1	1							27:45
3	VELIČKOVIĆ Teodora		3/6	50	1/4					2/2		1	1				3								32:27
4	MAJKIĆ Teodora																								
7	VUKAJLOVIĆ Aleksandra		6/8	75	0/1	1/1				5/5	0/1			3			1								50:48
11	LANIŠTANIN Marija		5/8	63	2/4	1/1		2/3						1			1		1						22:59
14	NUKOVIĆ Edita																1								18:20
15	JANJUŠEVIĆ Andela	S	2/3	67						2/2	0/1	3			3	1	2	1							52:18
22	JOVOVIĆ Jovana	S	1/2	50	1/2									1											7:54
25	STAMENIĆ Aleksandra		1/3	33		0/1	1/2									1	1								34:34
27	KUBINA Molli																								8:20
29	LOVRIĆ Nataša	S																							33:47
31	BOJIČIĆ Katarina	S	0/1	0		0/1																			16:00
34	RADEVIĆ Dunja		0/1	0			0/1										1								24:00
36	LAZIĆ Emilija	S	0/1	0		0/1								1			3						1		13:16
92	MILOJEVIĆ Jovana														1								1		28:41
99	ČOLIĆ Marija	S																							48:51
	Team / bench																								
	UKUPNO		20/37	54	4/11	2/6	2/4	3/4	0/0	9/10	0/2	4	7	4	2	14	2	2	1	1	1	3	1	0	

Goalkeepers		Saves / shots									
#	Surname and name	Tot.	%	9m	6m	Wing	7m	FB	Brk.	LD	
27	KUBINA Molli	3/6	50	1/2	0/2		1/1		1/1		
99	ČOLIĆ Marija	10/29	34	5/14	2/3	3/5	0/1	0/3	0/3		
	TOTAL	13/35	37	6/16	2/5	3/5	1/2	0/3	1/4	0/0	

Coach: Uroš Bregar

Number of attacks: 51, Efficiency: 39%, Average Duration: 37.29 seconds

### Attack by type of defense

	Shots	9m	6m	Wing	TF	E7	E2
On def. 6-0	10/16	2/7	2/2	0/1	5	2	0
On def. 5-1	5/11	2/4	0/3	1/1	7	2	1
On def. 4-2	2/3	0/0	0/1	1/1	2	0	1
On def. 3-3	0/1	0/0	0/0	0/1	0	0	0
Fastbreak	0/0				0	0	0

### Defense by type

	Total	9m	6m	Wing	Stl.	C7	2m
Def. 6-0	18/32	10/18	3/4	2/6	2	2	0
Fastbreak	3/3				0	0	3

### Defense with superiority / minority / goalkeeper out

	Attack				Reaction		
	Att.	Eff.	Shots	TF	FB	LD	Tot.
7 on 6 (GK out)	14	43%	6/12	2	0/0	0/1	0/1
7 on 5 (GK out)	1	0%	0/1	0	0/0	0/0	0/0
6 on 6 (GK out)	4	0%	0/0	4	0/0	0/1	0/1
6 on 5 (GK out)	1	0%	0/1	0	0/0	0/0	0/0
6 on 6	25	48%	12/17	8			
6 on 5	4	50%	2/4	0			
6 on 4	1	100%	1/1	0			
5 on 6	1	100%	1/1	0			

Numbers show attacking numbers of opponent. Lower efficiency of opponent means better defense of this team

### Attack with superiority / minority / goalkeeper out

	Attack				Reaction			
	Att.	Eff.	Shots	TF	FB	LD	Tot.	
7 on 6 (GK out)	2	0%	0/1	1	0/0	0/0	0/0	
6 on 6 (GK out)	4	25%	1/4	0	0/0	0/0	0/0	
6 on 6	38	37%	14/25	13				
5 on 6	1	100%	1/1	0				
6 on 5 (GK out)	1	100%	1/1	0	0/0	0/0	0/0	
6 on 5	5	60%	3/5	0				

Player superiority / GK out counted at the end of attack (in case it changes during attack)

# Jersey number Tot. Total shooting 6m 6m (line) shooting 9m 9m shooting Wng Wing shooting FB Fastbreak sh. 7m 7m penalty sh.  
 Brk. Breakthrough sh. LD Long distance sh. As. Assists PC Pass clear chance E7 Earned 7m pen. TF Technical faults St. Steals  
 2m 2m punishments C7. Committed 7m E2 Earned 2m pun. YC. Yellow cards R/B Red/Blue cards Blk. Blocks S Starting Line-up



# 26th IHF Women's World Championship

Denmark • Norway • Sweden

Main Round III, 3. round



## Match Team Statistics

Match No. 94

## Japan 22 - 20 Serbia

(9 - 8) (13 - 12)

11.12.2023. 15:30

Attendance: 1979

Jyske Bank Boxen

Referees: Alexei Covalciuc (MDA) / Igor Covalciuc (MDA)

## Shot distribution by player

### 2 S. Radosavljević

		1/1
0/1		
1/1		

1 post

### 3 T. Veličković

0/1		1/1
		1/1
		1/1

2 miss.

### 4 T. Majkić


### 7 A. Vukajlović

1/1		
2/3	1/1	2/2

1 miss.

### 11 M. Laništanin

	1/1	
0/1	0/1	
3/3		1/1

1 post

### 14 E. Nuković


### 15 A. Janjušević

1/1	0/1	
	1/1	

### 22 J. Jovović

0/1		
		1/1

### 25 A. Stamenić

0/1		
0/1		
1/1		

### 29 N. Lovrić


### 31 K. Bojčić

		0/1

### 34 D. Radević


1 post

### 36 E. Lazić

0/1		

### 92 J. Milojević


## TOTAL

0/3	1/1	2/2
2/6	0/2	1/1
7/8	2/2	5/6

3 post 3 miss.

## Saves distribution goalkeepers

### 27 M. Kubina

1/1		
0/1		1/1
1/2		0/1

### 99 M. Čolić

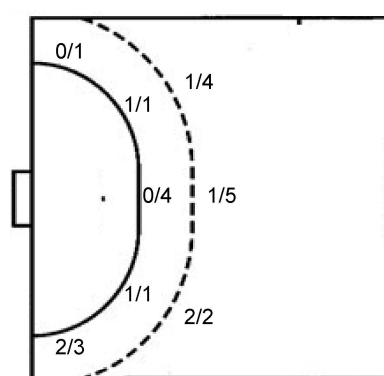
0/1		0/5
		2/3
1/6	1/2	5/7

## TOTAL

1/2		0/5
0/1		3/4
2/8	1/2	5/8

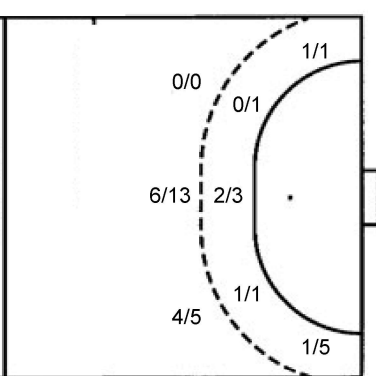
## Shots by position

### ATTACK



7m penalties 3/4  
Fastbreak 0/0  
Breakthrough 9/10  
Long dist. 0/2

### DEFENSE



7m penalties 1/2  
Fastbreak 3/3  
Breakthrough 3/4  
Long dist. 0/0

## Shooting statistics

Position	Goals	Sav.	Miss.	Post	Blk.	Total	%
Back (9m)	4	5	2	0	0	11	36
Line (6m)	2	4	0	0	0	6	33
Wing	2	1	0	1	0	4	50
7m penalties	3	0	0	1	0	4	75
Fastbreak	0	0	0	0	0	0	0
Breakthrough	9	0	0	1	0	10	90
<b>Total</b>	<b>20</b>	<b>10</b>	<b>2</b>	<b>3</b>	<b>0</b>	<b>35</b>	<b>57</b>

# Jersey number Tot. Total shooting 6m 6m (line) shooting 9m 9m shooting Wng Wing shooting FB Fastbreak sh. 7m 7m penalty sh.  
Brk. Breakthrough sh. LD Long distance sh. As. Assists PC Pass clear chance E7 Earned 7m pen. TF Technical faults St. Steals  
2m 2m punishments C7. Committed 7m E2 Earned 2m pun. YC. Yellow cards R/B Red/Blue cards Blk. Blocks S Starting Line-up

Handball statistics and livescore by Toma-soft ltd (www.toma-soft.hr)

