



26th IHF Women's World Championship

Denmark • Norway • Sweden

President's Cup I, 3. round



Match Team Statistics

Match No. 88

Paraguay 21 - 19 Greenland

(11 - 9) (10 - 10)

11.12.2023. 20:30

Attendance: 332

Arena Nord

Referees: Maali Alenezi (KUW) / Dalal Alnaseem (KUW)

Paraguay

Players		Goals / shots										Attack					Def.			Penalties				TP	
#	Surname and name	S	Tot.	%	9m	6m	Wing	7m	FB	Brk.	LD	As.	PC	E7	E2	TF	St.	C7	Blk	YC	2m	R	B		
2	ACUNA INFRAN Fatima		1/2	50			0/1	1/1										1							15:00
3	MISKINICH LUGO Ada																								22:06
4	INFRAN MORA Fernanda	S	4/4	100	1/1					3/3		4	2	1	1	9	2	2							57:06
6	MENDOZA PERALTA Jazmin		6/11	55	0/2		4/6			2/3						2									38:32
7	DOS SANTOS Karina	S																	1						27:03
8	VERGARA MARTINEZ Kiara															1									9:35
11	LEIVA MORLAS Delyne	S	3/4	75						3/4		1	2	1	1	2	2								50:03
12	OCAMPOS MOREL Fatima	S														1									59:04
14	FERNANDEZ ESTIGARRIBIA Maria	S	4/8	50	0/2			2/2		1/3	1/1	1		2	2	3	1								59:31
15	BOBADILLA PEREIRA Belinda																								
18	LUGO LARA Maggie	S	1/1	100							1/1					1		1							43:25
20	CRISTALDO VERA Ana												1			2									7:28
24	PORTILLO MIERES Ariana	S	2/5	40		1/1	0/2	0/1	1/1																30:11
25	MACHUCA ESPINOZA Maria																								0:56
Team / bench																					1				
UKUPNO			21/35	60	1/5	1/1	4/9	3/4	1/1	9/13	2/2	6	5	4	4	21	6	3	1	1	0	0	0	0	

Goalkeepers		Saves / shots									
#	Surname and name	Tot.	%	9m	6m	Wing	7m	FB	Brk.	LD	
12	OCAMPOS MOREL Fatima	10/28	36	4/7	0/1	6/12	0/1	0/1	0/6		
25	MACHUCA ESPINOZA Maria	0/1	0				0/1				
TOTAL		10/29	34	4/7	0/1	6/12	0/2	0/1	0/6	0/0	

Coach: Marizza Alejandra Faria Servin

Number of attacks: 53, Efficiency: 40%, Average Duration: 31.57 seconds

Attack by type of defense

	Shots	9m	6m	Wing	TF	E7	E2
On def. 6-0	12/19	1/2	1/1	4/7	14	2	2
On def. 5-1	2/6	0/1	0/0	0/2	5	2	2
On def. 4-2	1/3	0/2	0/0	0/0	2	0	0
Fastbreak	1/1				0	0	0

Defense by type

	Total	9m	6m	Wing	Stl.	C7	2m
Def. 6-0	10/21	2/7	0/0	4/10	2	0	0
Def. 5-1	3/6	0/0	1/1	1/4	1	2	0
Def. 4-2	3/4	1/2	0/0	1/1	3	1	0
Fastbreak	1/1				0	0	0

Attack with superiority / minority / goalkeeper out

	Attack				Reaction		
	Att.	Eff.	Shots	TF	FB	LD	Tot.
6 on 6	43	40%	17/25	18			
6 on 5	10	40%	4/7	3			

Player superiority / GK out counted at the end of attack (in case it changes during attack)

Defense with superiority / minority / goalkeeper out

	Attack				Reaction		
	Att.	Eff.	Shots	TF	FB	LD	Tot.
7 on 6 (GK out)	10	30%	3/6	4	0/0	0/0	0/0
6 on 6 (GK out)	7	29%	2/4	3	0/0	2/2	2/2
6 on 6	35	37%	13/23	12			
5 on 6	1	100%	1/1	0			

Numbers show attacking numbers of opponent. Lower efficiency of opponent means better defense of this team

Jersey number Tot. Total shooting 6m 6m (line) shooting 9m 9m shooting Wng Wing shooting FB Fastbreak sh. 7m 7m penalty sh.
 Brk. Breakthrough sh. LD Long distance sh. As. Assists PC Pass clear chance E7 Earned 7m pen. TF Technical faults St. Steals
 2m 2m punishments C7. Committed 7m E2 Earned 2m pun. YC. Yellow cards R/B Red/Blue cards Blk. Blocks S Starting Line-up

Handball statistics and livescore by Toma-soft ltd (www.toma-soft.hr)



26th IHF Women's World Championship

Denmark • Norway • Sweden

President's Cup I, 3. round



Match Team Statistics

Match No. 88

Paraguay 21 - 19 Greenland

(11 - 9) (10 - 10)

11.12.2023. 20:30

Attendance: 332

Arena Nord

Referees: Maali Alenezi (KUW) / Dalal Alnaseem (KUW)

Shot distribution by player

2 F. Acuna Insfran

		1/1

1 post

3 A. Miskinich Lugo

4 F. Insfran Mora

2/2		
1/1	1/1	

6 J. Mendoza Peralta

1/2	0/1	2/2
1/1	1/1	
		1/2

1 post 1 miss.

7 K. Dos Santos

8 K. Vergara Martinez

11 D. Leiva Morlas

1/1		2/2
	0/1	

14 M. Fernandez Estigarribia

2/2	0/1	
	1/1	0/1
1/1		

2 miss.

15 B. Bobadilla Pereira

18 M. Lugo Lara

	1/1	

20 A. Cristaldo Vera

24 A. Portillo Mieres

0/1		
1/1		
		1/2

0/1 lob

TOTAL

4/6	0/2	4/4
4/4	3/4	0/1
2/2	1/1	3/5

2 post 3 miss. 0/1 lob

Saves distribution goalkeepers

12 F. Ocampos Morel

	1/3	3/6
1/2		2/5
0/4	0/1	2/5

25 M. Machuca Espinoza

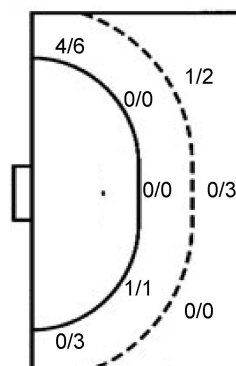
	0/1	

TOTAL

	1/3	3/6
1/2		2/5
0/4	0/2	2/5

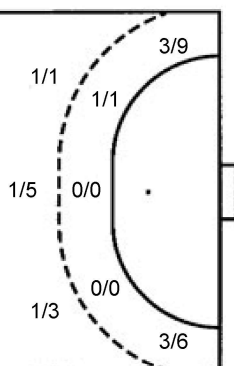
Shots by position

ATTACK



7m penalties 3/4
Fastbreak 1/1
Breakthrough 9/13
Long dist. 2/2

DEFENSE



7m penalties 2/3
Fastbreak 1/1
Breakthrough 6/6
Long dist. 0/0

Shooting statistics

Position	Goals	Sav.	Miss.	Post	Blk.	Total	%
Back (9m)	1	1	2	1	0	5	20
Line (6m)	1	0	0	0	0	1	100
Wing	4	4	0	1	0	9	44
7m penalties	3	1	0	0	0	4	75
Fastbreak	1	0	0	0	0	1	100
Breakthrough	9	3	1	0	0	13	69
Total	19	9	3	2	0	33	58

Jersey number Tot. Total shooting 6m 6m (line) shooting 9m 9m shooting Wng Wing shooting FB Fastbreak sh. 7m 7m penalty sh.
Brk. Breakthrough sh. LD Long distance sh. As. Assists PC Pass clear chance E7 Earned 7m pen. TF Technical faults St. Steals
2m 2m punishments C7. Committed 7m E2 Earned 2m pun. YC. Yellow cards R/B Red/Blue cards Blk. Blocks S Starting Line-up

Handball statistics and livescore by Toma-soft ltd (www.toma-soft.hr)



26th IHF Women's World Championship

Denmark • Norway • Sweden

President's Cup I, 3. round



Match Team Statistics

Match No. 88

Paraguay 21 - 19 Greenland

(11 - 9) (10 - 10)

11.12.2023. 20:30

Attendance: 332

Arena Nord

Referees: Maali Alenezi (KUW) / Dalal Alnaseem (KUW)

Greenland

#	Surname and name	S	Goals / shots								Attack				Def.			Penalties				TP			
			Tot.	%	9m	6m	Wing	7m	FB	Brk.	LD	As.	PC	E7	E2	TF	St.	C7	Blk	YC	2m		R	B	
2	LUKASSEN Nuunu	S													1	2									15:11
3	HEILMANN Andrea Marie Bertia Karina	S	1/2	50	0/1					1/1				1	1		1								21:02
4	HEILMANN Anja Labansen		3/6	50			3/6																		44:47
7	KAJANGMAT Aviana Vilhelmine Jorna	S	2/6	33			2/5	0/1						1											26:20
8	FREDERIKSEN Ane-Sofiannuqaq Petrine																								
10	GADGAARD Josefine Jakobsgaard	S	1/1	100						1/1				4			5	2				2			37:15
13	BJERGE Ivalu Cecilie	S	4/8	50	0/4			1/1		3/3				4	7		4	1							44:10
14	PETERSEN Nivi Jensen		0/1	0	0/1									1			5								32:16
15	ROTHBERG Sandra													1				1							9:50
16	LORENTZEN Rina Moller	S																							38:46
17	HANSEN Lykke Catrine Frank		3/3	100	3/3													1							13:46
18	HEILMANN Aviaaja																								13:38
19	LYBERTH Nukaaka																					1			9:02
21	PEDERSEN Aili Paneeraq		2/2	100					1/1	1/1							1	1	1			1			30:00
26	HOLM Ivaana Augusta Ottosen	S	1/1	100		1/1									1		1	2	1						54:13
79	ZEEB Sascha Ane Jordening		2/5	40			1/4	1/1									1								29:44
	Team / bench																								
	UKUPNO		19/35	54	3/9	1/1	6/15	2/3	1/1	6/6	0/0	10	8	3	0	19	8	4	0	0	4	0	0		

#	Surname and name	Saves / shots								
		Tot.	%	9m	6m	Wing	7m	FB	Brk.	LD
16	LORENTZEN Rina Moller	8/23	35		0/1	4/7	1/3	0/1	3/11	
18	HEILMANN Aviaaja	1/5	20	1/2		0/1	0/1		0/1	
	TOTAL	9/28	32	1/2	0/1	4/8	1/4	0/1	3/12	0/0

Coach: Anders Friis

Number of attacks: 53, Efficiency: 36%, Average Duration: 36.36 seconds

Attack by type of defense

	Shots	9m	6m	Wing	TF	E7	E2
On def. 6-0	10/21	2/7	0/0	4/10	13	0	0
On def. 5-1	3/6	0/0	1/1	1/4	2	2	0
On def. 4-2	3/4	1/2	0/0	1/1	4	1	0
Fastbreak	1/1				0	0	0

Defense by type

	Total	9m	6m	Wing	Stl.	C7	2m
Def. 6-0	12/19	1/2	1/1	4/7	5	2	0
Def. 5-1	2/6	0/1	0/0	0/2	3	2	0
Def. 4-2	1/3	0/2	0/0	0/0	0	0	0
Fastbreak	1/1				0	0	4

Attack with superiority / minority / goalkeeper out

	Attack				Reaction		
	Att.	Eff.	Shots	TF	FB	LD	Tot.
7 on 6 (GK out)	10	30%	3/6	4	0/0	0/0	0/0
6 on 6 (GK out)	7	29%	2/4	3	0/0	2/2	2/2
6 on 6	35	37%	13/23	12			
5 on 6	1	100%	1/1	0			

Player superiority / GK out counted at the end of attack (in case it changes during attack)

Defense with superiority / minority / goalkeeper out

	Attack				Reaction		
	Att.	Eff.	Shots	TF	FB	LD	Tot.
6 on 6	43	40%	17/25	18			
6 on 5	10	40%	4/7	3			

Numbers show attacking numbers of opponent. Lower efficiency of opponent means better defense of this team

Jersey number Tot. Total shooting 6m 6m (line) shooting 9m 9m shooting Wng Wing shooting FB Fastbreak sh. 7m 7m penalty sh.
 Brk. Breakthrough sh. LD Long distance sh. As. Assists PC Pass clear chance E7 Earned 7m pen. TF Technical faults St. Steals
 2m 2m punishments C7. Committed 7m E2 Earned 2m pun. YC. Yellow cards R/B Red/Blue cards Blk. Blocks S Starting Line-up



26th IHF Women's World Championship

Denmark • Norway • Sweden

President's Cup I, 3. round



Match Team Statistics

Match No. 88

Paraguay 21 - 19 Greenland

(11 - 9) (10 - 10)

11.12.2023. 20:30

Attendance: 332

Arena Nord

Referees: Maali Alenezi (KUW) / Dalal Alnaseem (KUW)

Shot distribution by player

2 N. Lukassen

3 A. Heilmann

		0/1
		1/1

4 A. Heilmann

		0/1
		1/1
1/1		1/3

7 A. Kajangmat

		1/1
0/1		
1/1		

1 post 1 miss. 0/1 lob

8 A. Frederiksen

10 J. Gadgaard

1/1		

13 I. Bjerge

		0/1
		1/2
1/1	2/2	

1 miss. 1 block

14 N. Petersen

	0/1	

15 S. Rothberg

17 L. Hansen

	2/2	
		1/1

19 N. Lyberth

21 A. Pedersen

		2/2

26 I. Holm

1/1 lob

79 S. Zeeb

1/1		1/2

2 miss.

TOTAL

	2/3	3/6
1/2		3/5
4/4	2/2	3/5

1 post 4 miss. 1 block 1/2 lob

Saves distribution goalkeepers

16 R. Lorentzen

2/4	2/2	0/4
0/3	1/2	
0/1	0/1	2/5

18 A. Heilmann

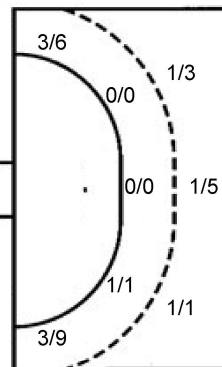
0/2		
0/1		1/1
0/1		

TOTAL

2/6	2/2	0/4
0/4	1/2	1/1
0/2	0/1	2/5

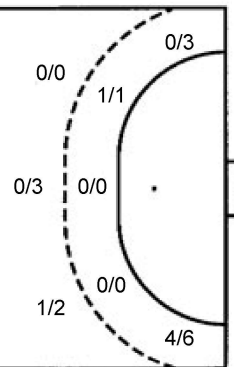
Shots by position

ATTACK



7m penalties 2/3
Fastbreak 1/1
Breakthrough 6/6
Long dist. 0/0

DEFENSE



7m penalties 3/4
Fastbreak 1/1
Breakthrough 9/13
Long dist. 2/2

Shooting statistics

Position	Goals	Sav.	Miss.	Post	Blk.	Total	%
Back (9m)	3	4	1	0	1	9	33
Line (6m)	1	0	0	0	0	1	100
Wing	6	6	2	1	0	15	40
7m penalties	2	0	1	0	0	3	67
Fastbreak	1	0	0	0	0	1	100
Breakthrough	6	0	0	0	0	6	100
Total	19	10	4	1	1	35	54

Jersey number Tot. Total shooting 6m 6m (line) shooting 9m 9m shooting Wng Wing shooting FB Fastbreak sh. 7m 7m penalty sh.
Brk. Breakthrough sh. LD Long distance sh. As. Assists PC Pass clear chance E7 Earned 7m pen. TF Technical faults St. Steals
2m 2m punishments C7. Committed 7m E2 Earned 2m pun. YC. Yellow cards R/B Red/Blue cards Blk. Blocks S Starting Line-up

Handball statistics and livescore by Toma-soft ltd (www.toma-soft.hr)

