



# 26th IHF Women's World Championship

Denmark • Norway • Sweden

President's Cup I, 3. round



Match Team Statistics

Match No. 87

Iceland 30 - 23 P.R. of China

(13 - 11) (17 - 12)

11.12.2023. 18:00

Attendance: 134

Arena Nord

Referees: Andrej Budzak (SVK) / Michal Zahradnik (SVK)

## Iceland

#	Surname and name	S	Goals / shots								Attack				Def.			Penalties				TP				
			Tot.	%	9m	6m	Wing	7m	FB	Brk.	LD	As.	PC	E7	E2	TF	St.	C7	Blk	YC	2m		R	B		
1	THORSTEINSDÓTTIR Elín Jóna															2										33:30
2	THORSTEINSDÓTTIR Berglind											1					3									10:37
4	STEFÁNSDÓTTIR Thórey Rósa		1/4	25			1/4																			20:23
6	ÁSEIRSDÓTTIR Thórey Anna	S	2/3	67			2/2		0/1						1	1										33:44
8	ALBERTSDÓTTIR Perla Ruth	S	1/1	100					1/1																	32:40
9	AGÚTSDÓTTIR Lilja		3/3	100			1/1		2/2																	18:28
12	RENÓTUDÓTTIR Hafdis	S										1				1										24:01
14	ELIÁSDÓTTIR Elísa		0/1	0			0/1											1								17:39
15	SIGURDARDÓTTIR Johanna Margret																									6:38
18	EINARSDÓTTIR Hildigunnur	S	3/5	60			3/5						1	1						2						41:49
21	ERLINGSDÓTTIR Sandra	S	6/10	60	1/3				4/4		1/3		1	3	2	1	4									36:27
22	MAGNÚSDÓTTIR Elín Rósa	S	6/8	75	1/2						5/6		3	3	1		2	3	1	2						48:25
25	STURLUDÓTTIR Thea Imani	S	5/6	83	4/5						1/1		3					1								36:31
26	JÓNSDÓTTIR Sunna		0/1	0								0/1						1		1	1					24:25
27	MAGNÚSDÓTTIR Díana Dögg		3/3	100							3/3		2			1	2							1		25:35
35	MAGNÚSDÓTTIR Katla María		0/1	0					0/1																	9:08
Team / bench																									1	
UKUPNO			30/46	65	6/10	3/6	4/7	4/4	3/5	10/13	0/1		10	8	4	2	12	8	3	4	2	2	0	0		

#	Surname and name	Saves / shots								
		Tot.	%	9m	6m	Wing	7m	FB	Brk.	LD
1	THORSTEINSDÓTTIR Elín Jóna	8/20	40	4/6	1/1	1/2	0/2	0/2	2/7	
12	RENÓTUDÓTTIR Hafdis	1/10	10	1/2	0/3	0/2	0/1		0/2	
TOTAL		9/30	30	5/8	1/4	1/4	0/3	0/2	2/9	0/0

Coach: Arnar Pétursson

Number of attacks: 57, Efficiency: 53%, Average Duration: 31.51 seconds

### Attack by type of defense

	Shots	9m	6m	Wing	TF	E7	E2
On def. 6-0	22/35	6/10	3/6	4/7	11	3	2
On def. 5-1	1/1	0/0	0/0	0/0	1	1	0
Fastbreak	3/5				0	0	0

### Defense by type

	Total	9m	6m	Wing	Stl.	C7	2m
Def. 6-0	11/29	1/13	1/1	2/4	1	3	0
Def. 5-1	5/7	2/3	2/3	1/1	7	0	0
Fastbreak	2/3				0	0	2

### Attack with superiority / minority / goalkeeper out

	Attack				Reaction		
	Att.	Eff.	Shots	TF	FB	LD	Tot.
6 on 6 (GK out)	3	33%	1/2	1	0/0	2/2	2/2
6 on 6	46	54%	25/37	9			
6 on 5	8	50%	4/6	2			

Player superiority / GK out counted at the end of attack (in case it changes during attack)

### Defense with superiority / minority / goalkeeper out

	Attack				Reaction		
	Att.	Eff.	Shots	TF	FB	LD	Tot.
6 on 6 (GK out)	5	40%	2/4	1	1/1	0/1	1/2
6 on 6	45	36%	16/30	15			
5 on 6	1	0%	0/0	1			
6 on 5	5	100%	5/5	0			

Numbers show attacking numbers of opponent. Lower efficiency of opponent means better defense of this team

# Jersey number Tot. Total shooting 6m 6m (line) shooting 9m 9m shooting Wng Wing shooting FB Fastbreak sh. 7m 7m penalty sh.  
 Brk. Breakthrough sh. LD Long distance sh. As. Assists PC Pass clear chance E7 Earned 7m pen. TF Technical faults St. Steals  
 2m 2m punishments C7. Committed 7m E2 Earned 2m pun. YC. Yellow cards R/B Red/Blue cards Blk. Blocks S Starting Line-up

Handball statistics and livescore by Toma-soft ltd (www.toma-soft.hr)



# 26th IHF Women's World Championship

Denmark • Norway • Sweden

President's Cup I, 3. round



## Match Team Statistics

Match No. 87

## Iceland 30 - 23 P.R. of China

(13 - 11) (17 - 12)

11.12.2023. 18:00

Attendance: 134

Arena Nord

Referees: Andrej Budzak (SVK) / Michal Zahradnik (SVK)

## Shot distribution by player

### 2 B. Thorsteinsdóttir


### 4 T. Stefánsdóttir

	0/1	
		0/1
0/1		1/1

### 6 T. Áseirsdóttir

1/1		0/1

1/1 lob

### 8 P. Albertsdóttir

		1/1

### 9 L. Ágútsdóttir

		1/1
		1/1
		1/1

### 14 E. Elíasdóttir


1 post

### 15 J. Sigurdardóttir


### 18 H. Einarsson

1/1		
2/3	0/1	

### 21 S. Erlingsdóttir

1/1		2/2
2/2	0/1	1/1

1 post 2 block

### 22 E. Magnúsdóttir

		1/1
4/4		1/2

1 miss.

### 25 T. Sturludóttir

1/1		1/1
0/1		
1/1		2/2

### 26 S. Jónsdóttir

		0/1

### 27 D. Magnúsdóttir

		1/1
1/1		
		1/1

### 35 K. Magnúsdóttir

0/1		

## TOTAL

4/4	0/1	5/6
1/2		2/3
9/12	0/2	8/10

2 post 1 miss. 2 block 1/1 lob

## Saves distribution goalkeepers

### 1 E. Thorsteinsdóttir

0/3		1/1
2/7	3/3	2/5

### 12 H. Renötudóttir

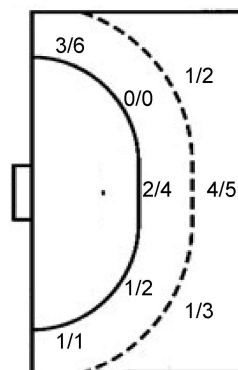
0/1		
0/1	1/1	
0/3	0/1	0/2

## TOTAL

0/4		1/1
0/1	1/1	
2/10	3/4	2/7

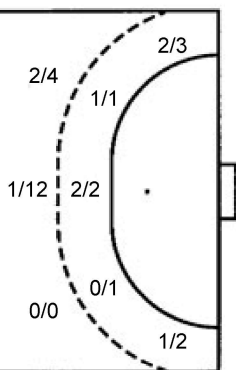
## Shots by position

### ATTACK



7m penalties	4/4
Fastbreak	3/5
Breakthrough	10/13
Long dist.	0/1

### DEFENSE



7m penalties	3/3
Fastbreak	2/3
Breakthrough	7/11
Long dist.	2/2

## Shooting statistics

Position	Goals	Sav.	Miss.	Post	Blk.	Total	%
Back (9m)	6	2	0	0	2	10	60
Line (6m)	3	2	0	1	0	6	50
Wing	4	3	0	0	0	7	57
7m penalties	4	0	0	0	0	4	100
Fastbreak	3	2	0	0	0	5	60
Breakthrough	10	1	1	1	0	13	77
<b>Total</b>	<b>30</b>	<b>10</b>	<b>1</b>	<b>2</b>	<b>2</b>	<b>45</b>	<b>67</b>

# Jersey number Tot. Total shooting 6m 6m (line) shooting 9m 9m shooting Wng Wing shooting FB Fastbreak sh. 7m 7m penalty sh.  
 Brk. Breakthrough sh. LD Long distance sh. As. Assists PC Pass clear chance E7 Earned 7m pen. TF Technical faults St. Steals  
 2m 2m punishments C7. Committed 7m E2 Earned 2m pun. YC. Yellow cards R/B Red/Blue cards Blk. Blocks S Starting Line-up

Handball statistics and livescore by Toma-soft ltd (www.toma-soft.hr)



# 26th IHF Women's World Championship

Denmark • Norway • Sweden

President's Cup I, 3. round



Match Team Statistics

Match No. 87

Iceland 30 - 23 P.R. of China

(13 - 11) (17 - 12)

11.12.2023. 18:00

Attendance: 134

Arena Nord

Referees: Andrej Budzak (SVK) / Michal Zahradnik (SVK)

## P.R. of China

Players		Goals / shots										Attack					Def.			Penalties				TP	
#	Surname and name	S	Tot.	%	9m	6m	Wing	7m	FB	Brk.	LD	As.	PC	E7	E2	TF	St.	C7	Blk	YC	2m	R	B		
1	LU Chang	S																							26:58
5	WANG Jiayi																								
9	JIANG Yishan																								1:15
11	LIU Chan	S	2/8	25	0/5				1/1	1/2		1	2	1		4									48:30
12	LI Xiaoqing	S	6/8	75	2/4					4/4		2				1		1				2			48:26
13	ZHAO Xinyao																								11:59
14	ZHOU Mengxue		0/3	0	0/2					0/1				1		2									11:20
17	HU Yunuo																								30:28
18	WEI Nana																	1							3:14
21	ZHANG Guisi		0/1	0		0/1									1				1						35:32
22	MA Jie																	1							24:23
23	ZHUANG Hongyan	S	1/2	50			1/2					2						1							34:54
27	GONG Lei	S	2/2	100		2/2												1	1	1		1			24:28
28	LIU Xuedan																								1:47
34	JIN Mengqing	S	7/13	54	0/4			3/3		2/4	2/2	4	2	1	1	9									58:32
53	LIU Yuting	S	5/7	71	1/1	1/1	2/3		1/2									1							58:13
	Team / bench																1								
	UKUPNO		23/44	52	3/16	3/4	3/5	3/3	2/3	7/11	2/2	9	4	3	2	17	2	4	2	1	2	1	0		

Goalkeepers		Saves / shots									
#	Surname and name	Tot.	%	9m	6m	Wing	7m	FB	Brk.	LD	
1	LU Chang	6/22	27	1/6	1/3	2/4	0/3	2/3	0/3		
17	HU Yunuo	5/19	26	1/2	1/2	1/3	0/1	0/2	1/8	1/1	
	TOTAL	11/41	27	2/8	2/5	3/7	0/4	2/5	1/11	1/1	

Coach: Yongli Zheng

Number of attacks: 56, Efficiency: 41%, Average Duration: 31.23 seconds

### Attack by type of defense

	Shots	9m	6m	Wing	TF	E7	E2
On def. 6-0	11/29	1/13	1/1	2/4	8	3	2
On def. 5-1	5/7	2/3	2/3	1/1	9	0	0
Fastbreak	2/3				0	0	0

### Defense by type

	Total	9m	6m	Wing	Stl.	C7	2m
Def. 6-0	22/35	6/10	3/6	4/7	2	3	0
Def. 5-1	1/1	0/0	0/0	0/0	0	1	0
Fastbreak	3/5				0	0	2

### Attack with superiority / minority / goalkeeper out

	Attack				Reaction		
	Att.	Eff.	Shots	TF	FB	LD	Tot.
6 on 6 (GK out)	5	40%	2/4	1	1/1	0/1	1/2
6 on 6	45	36%	16/30	15			
5 on 6	1	0%	0/0	1			
6 on 5	5	100%	5/5	0			

Player superiority / GK out counted at the end of attack (in case it changes during attack)

### Defense with superiority / minority / goalkeeper out

	Attack				Reaction		
	Att.	Eff.	Shots	TF	FB	LD	Tot.
6 on 6 (GK out)	3	33%	1/2	1	0/0	2/2	2/2
6 on 6	46	54%	25/37	9			
6 on 5	8	50%	4/6	2			

Numbers show attacking numbers of opponent. Lower efficiency of opponent means better defense of this team

# Jersey number Tot. Total shooting 6m 6m (line) shooting 9m 9m shooting Wng Wing shooting FB Fastbreak sh. 7m 7m penalty sh.  
 Brk. Breakthrough sh. LD Long distance sh. As. Assists PC Pass clear chance E7 Earned 7m pen. TF Technical faults St. Steals  
 2m 2m punishments C7. Committed 7m E2 Earned 2m pun. YC. Yellow cards R/B Red/Blue cards Blk. Blocks S Starting Line-up



# 26th IHF Women's World Championship

Denmark • Norway • Sweden

President's Cup I, 3. round



## Match Team Statistics

Match No. 87

## Iceland 30 - 23 P.R. of China

(13 - 11) (17 - 12)

11.12.2023. 18:00

Attendance: 134

Arena Nord

Referees: Andrej Budzak (SVK) / Michal Zahradnik (SVK)

## Shot distribution by player

<b>5 J. Wang</b> [Grid]	<b>9 Y. Jiang</b> [Grid]	<b>11 C. Liu</b> 1/1 0/1 1/1 0/1 3 miss. 1 block	<b>12 X. Li</b> [Grid] 2/2 4/4 1 post 1 block	<b>13 X. Zhao</b> [Grid]	<b>14 M. Zhou</b> [Grid] 0/1 0/2	<b>18 N. Wei</b> [Grid]
<b>21 G. Zhang</b> [Grid] 0/1	<b>22 J. Ma</b> [Grid]	<b>23 H. Zhuang</b> [Grid] 1/1 0/1	<b>27 L. Gong</b> [Grid] 1/1 1/1	<b>28 X. Liu</b> [Grid]	<b>34 M. Jin</b> 2/2 0/1 2/2 2/3 1/1 1 post 1 miss. 2 block	<b>53 Y. Liu</b> [Grid] 3/3 1 post 1 miss. 2/2 lob

### TOTAL

4/4		0/1
1/1	0/1	
8/10	3/6	5/7

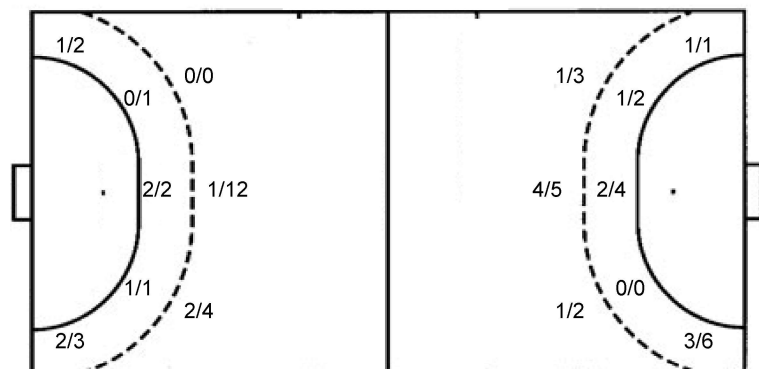
3 post 5 miss. 4 block 2/2 lob

## Saves distribution goalkeepers

<b>1 C. Lu</b> 0/4 1/1 1/4 1/1 2/7 1/5	<b>17 Y. Hu</b> [Grid] 0/2 1/2 0/2 1/5 2/2 1/5	<b>TOTAL</b> 0/4 1/1 1/6 1/2 1/3 3/12 2/2 2/10
---	--	---

## Shots by position

### ATTACK



7m penalties 3/3  
Fastbreak 2/3  
Breakthrough 7/11  
Long dist. 2/2

7m penalties 4/4  
Fastbreak 3/5  
Breakthrough 10/13  
Long dist. 0/1

## Shooting statistics

Position	Goals	Sav.	Miss.	Post	Blk.	Total	%
Back (9m)	3	5	3	1	4	16	19
Line (6m)	3	1	0	0	0	4	75
Wing	3	1	1	0	0	5	60
7m penalties	3	0	0	0	0	3	100
Fastbreak	2	0	0	1	0	3	67
Breakthrough	7	2	1	1	0	11	64
<b>Total</b>	<b>21</b>	<b>9</b>	<b>5</b>	<b>3</b>	<b>4</b>	<b>42</b>	<b>50</b>

# Jersey number Tot. Total shooting 6m 6m (line) shooting 9m 9m shooting Wng Wing shooting FB Fastbreak sh. 7m 7m penalty sh.  
Brk. Breakthrough sh. LD Long distance sh. As. Assists PC Pass clear chance E7 Earned 7m pen. TF Technical faults St. Steals  
2m 2m punishments C7. Committed 7m E2 Earned 2m pun. YC. Yellow cards R/B Red/Blue cards Blk. Blocks S Starting Line-up



# 26th IHF Women's World Championship

Denmark • Norway • Sweden

President's Cup I, 3. round



## Match Team Statistics

Match No. 87

## Iceland 30 - 23 P.R. of China

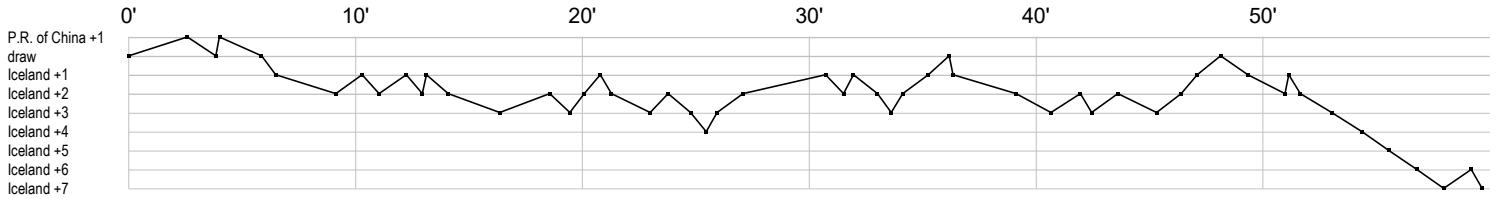
(13 - 11) (17 - 12)

11.12.2023. 18:00

Attendance: 134

Arena Nord

Referees: Andrej Budzak (SVK) / Michal Zahradnik (SVK)



### Iceland

1 Thorsteinsdóttir	r t s r s s r r r s r r r s s r r str
2 Thorsteinsdóttir	b b b
4 Stefánsdóttir	f g f f
6 Áseisdóttir T	t g b f g
8 Albertsdóttir P	g
9 Ágúsdóttir L	g g g
12 Renöudóttir	t r r s a r r r r r r
14 Elíasdóttir E	c f
15 Sigurdardóttir	
18 Einarisdóttir H	f e x x f g g g p
21 Erlingsdóttir S	g g p e g f a p t ft g f t eig p t f g
22 Magnúsdóttir	p p t x x c g f t g g p b a e a g g b g a b
25 Sturludóttir T	g g a f g g b a a g
26 Jónsdóttir S	y g f 2c
27 Magnúsdóttir	ig a 2 g t t g a
35 Magnúsdóttir	f

### P.R. of China

1 Lu C	s s r r r r r s r r
5 Wang J	
9 Jiang Y	
11 Liu C	f f t f e a t fg p f g t p t
12 Li X	a f g g 2 g g g f c2 t g a
13 Zhao X	
14 Zhou M	t f f e t f
17 Hu Y	s r s r r r s r r r s r r r r
18 Wei N	c
21 Zhang G	i x f
22 Ma J	b
23 Zhuang H	g a b a f
27 Gong L	cy g x g f
28 Liu X	
34 Jin M	t a f f g t a g f p a t t g f a t f f p g ei g g t t t t
53 Liu Y	g f c g g g f

In game	<b>g</b> Goal scored	<b>f</b> Missed shot	<b>a</b> Assist	<b>t</b> Technical faults	<b>b</b> Steal
<b>2</b> 2min suspension	<b>e</b> Earned 7m	<b>c</b> Committed 7m	<b>y</b> Yellow card	<b>r</b> Red Card	<b>k</b> Blue card
<b>i</b> Earned 2min.	<b>x</b> Block	<b>4</b> 4min suspension	<b>p</b> Pass for clear chance	<b>s</b> Saved shot	<b>r</b> Received goal