



# 26th IHF Women's World Championship

Denmark • Norway • Sweden

Main Round II, 3. round



Match Team Statistics

Match No. 86

## France 24 - 23 Norway

(12 - 12) (12 - 11)

10.12.2023. 20:30

Attendance: 6754

Trondheim Spektrum

Referees: Amar Konjicanin (BIH) / Dino Konjicanin (BIH)

### France

#	Surname and name	S	Goals / shots								Attack				Def.			Penalties				TP	
			Tot.	%	9m	6m	Wing	7m	FB	Brk.	LD	As.	PC	E7	E2	TF	St.	C7	Blk	YC	2m		R
1	GLAUSER Laura	S										1		1									53:54
2	NOCANDY Méline		1/2	50		0/1									2							1	12:12
3	TOUBLANC Alicia	S	1/3	33		1/1	0/1	0/1														1	36:11
6	VALENTINI Chloé	S	3/4	75			3/4																44:02
8	LASSOURCE Coralie																						14:31
10	ZAADI DEUNA Grace	S	1/3	33	1/2							1	4	1									11:41
20	FLIPPES Laura	S	2/4	50	0/1																	3	37:55
21	KANOR Orlane		4/8	50	3/6							1			1	2					1		37:02
22	HORACEK Tamara		2/6	33	0/2							2											38:17
26	FOPPA Pauletta	S	1/1	100		1/1								2								1	41:52
27	NZE MINKO Estelle	S	6/8	75	0/1							3	2		1	1	1						31:11
29	ONDONO Onacia																						
31	GRANIER Lucie		0/1	0																			20:48
32	BOUKTIT Sarah		3/5	60		3/4										1	1						22:05
34	GRANDVEAU Léna		0/3	0											1	2	1						17:18
99	SAKO Hatadou																						1:01
	Team / bench																						
	UKUPNO		24/48	50	4/12	5/7	3/5	2/6	2/4	8/14	0/0	9	8	5	5	7	4	4	1	0	6	0	0

#	Surname and name	Saves / shots									
		Tot.	%	9m	6m	Wing	7m	FB	Brk.	LD	
1	GLAUSER Laura	10/32	31	3/8		3/8	0/2			1/6	1/1
99	SAKO Hatadou	0/1	0				0/1				
	TOTAL	10/33	30	3/8	2/7	3/8	0/3	0/0	1/6	1/1	

Coach: Olivier Krumbholz

Number of attacks: 48, Efficiency: 50%, Average Duration: 37.27 seconds

### Attack by type of defense

	Shots	9m	6m	Wing	TF	E7	E2
On def. 6-0	20/38	4/12	5/7	3/5	7	5	5
Fastbreak	2/4				0	0	0

### Defense by type

	Total	9m	6m	Wing	Stl.	C7	2m
Def. 6-0	20/35	5/11	5/7	5/10	4	4	0
Fastbreak	0/0				0	0	6

### Attack with superiority / minority / goalkeeper out

	Attack				Reaction		
	Att.	Eff.	Shots	TF	FB	LD	Tot.
6 on 6 (GK out)	7	57%	4/7	0	0/0	0/1	0/1
6 on 6	32	47%	15/25	7			
6 on 5	8	50%	4/8	0			
5 on 6	1	100%	1/1	0			

Player superiority / GK out counted at the end of attack (in case it changes during attack)

### Defense with superiority / minority / goalkeeper out

	Attack				Reaction		
	Att.	Eff.	Shots	TF	FB	LD	Tot.
7 on 6 (GK out)	3	0%	0/3	0	0/0	0/0	0/0
6 on 6 (GK out)	4	50%	2/3	1	0/0	0/0	0/0
6 on 6	29	38%	11/19	10			
6 on 5	13	77%	10/12	1			

Numbers show attacking numbers of opponent. Lower efficiency of opponent means better defense of this team

# Jersey number Tot. Total shooting 6m 6m (line) shooting 9m 9m shooting Wng Wing shooting FB Fastbreak sh. 7m 7m penalty sh.  
 Brk. Breakthrough sh. LD Long distance sh. As. Assists PC Pass clear chance E7 Earned 7m pen. TF Technical faults St. Steals  
 2m 2m punishments C7. Committed 7m E2 Earned 2m pun. YC. Yellow cards R/B Red/Blue cards Blk. Blocks S Starting Line-up



# 26th IHF Women's World Championship

Denmark • Norway • Sweden

Main Round II, 3. round



## Match Team Statistics

Match No. 86

## France 24 - 23 Norway

(12 - 12) (12 - 11)

10.12.2023. 20:30

Attendance: 6754

Trondheim Spektrum

Referees: Amar Konjicanin (BIH) / Dino Konjicanin (BIH)

## Shot distribution by player

### 2 M. Nocandy

	0/1	1/1

### 3 A. Toublanc

0/1		
1/1		

1 post

### 6 C. Valentini

		2/2

1 miss. 1/1 lob

### 8 C. Lassource


### 10 G. Zaadi Deuna

		0/1
		1/2

### 20 L. Flippes

	0/1	
	2/2	0/1

### 21 O. Kanor

1/1		1/1
	0/2	
2/2		0/1

1 post

### 22 T. Horacek

2/2		0/1
	0/1	
	0/1	

1 block

### 26 P. Foppa

		1/1

### 27 E. Nze Minko

1/1		2/2
2/2		
0/1		1/1

1 post

### 29 O. Ondono


### 31 L. Granier

	0/1	

### 32 S. Bouktif

1/1	1/2	0/1

1/1 lob

### 34 L. Grandveau

	0/1	

2 post

## TOTAL

4/5		4/5
3/3	0/5	0/1
3/4	3/7	5/9

5 post 1 miss. 1 block 2/2 lob

## Saves distribution goalkeepers

### 1 L. Glauser

0/4		3/5
0/2	3/3	1/4
0/1	2/7	1/6

### 99 H. Sako

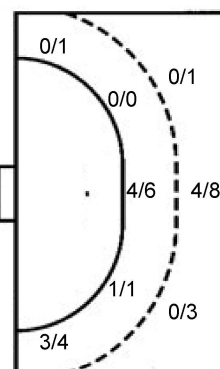
		0/1

## TOTAL

0/4		3/6
0/2	3/3	1/4
0/1	2/7	1/6

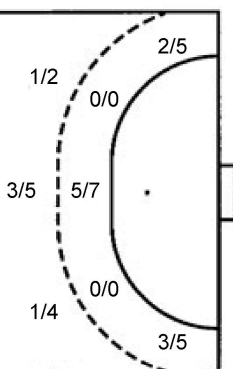
## Shots by position

### ATTACK



7m penalties 2/6  
Fastbreak 2/4  
Breakthrough 8/14  
Long dist. 0/0

### DEFENSE



7m penalties 3/4  
Fastbreak 0/0  
Breakthrough 5/7  
Long dist. 0/1

## Shooting statistics

Position	Goals	Sav.	Miss.	Post	Blk.	Total	%
Back (9m)	4	6	0	1	1	12	33
Line (6m)	5	2	0	0	0	7	71
Wing	3	1	1	0	0	5	60
7m penalties	2	3	0	1	0	6	33
Fastbreak	2	1	0	1	0	4	50
Breakthrough	8	4	0	2	0	14	57
<b>Total</b>	<b>24</b>	<b>17</b>	<b>1</b>	<b>5</b>	<b>1</b>	<b>48</b>	<b>50</b>

# Jersey number Tot. Total shooting 6m 6m (line) shooting 9m 9m shooting Wng Wing shooting FB Fastbreak sh. 7m 7m penalty sh.  
Brk. Breakthrough sh. LD Long distance sh. As. Assists PC Pass clear chance E7 Earned 7m pen. TF Technical faults St. Steals  
2m 2m punishments C7. Committed 7m E2 Earned 2m pun. YC. Yellow cards R/B Red/Blue cards Blk. Blocks S Starting Line-up

Handball statistics and livescore by Toma-soft ltd (www.toma-soft.hr)



# 26th IHF Women's World Championship

Denmark • Norway • Sweden

Main Round II, 3. round



Match Team Statistics

Match No. 86

## France 24 - 23 Norway

(12 - 12) (12 - 11)

10.12.2023. 20:30

Attendance: 6754

Trondheim Spektrum

Referees: Amar Konjicanin (BIH) / Dino Konjicanin (BIH)

### Norway

Players		Goals / shots									Attack				Def.			Penalties			TP				
#	Surname and name	S	Tot.	%	9m	6m	Wing	7m	FB	Brk.	LD	As.	PC	E7	E2	TF	St.	C7	Blk	YC		2m	R	B	
6	AARDAHL Maren Nyland		1/3	33		1/2					0/1				1		2			1		1			36:45
7	SKOGRAND Stine Ruscetta	S	3/4	75			2/3	1/1										1			1				55:35
9	MORK Nora	S	4/6	67	1/2			2/3		1/1		6	1	1			2								37:56
10	OFTEDAL Stine Bredal	S	3/5	60	2/3					1/2		4	5			2									36:38
12	SOLBERG Silje Margaretha	S																							19:06
13	BRATTSET DALE Kari																								
14	BREISTOL Kristine																								
15	INGSTAD Vilde Mortensen		4/5	80		4/5									1			1							34:37
16	LUNDE Katrine																								36:29
21	BAKKERUD Ingvild Kristiansen	S														1	1	1							32:22
22	NOVAK Kristina Sirum																								0:05
23	HERREM Camilla	S	2/5	40			2/5							1	1			1							58:46
24	SOLBERG-ISAKSEN Sanna Charlotte																								2:19
25	REISTAD Henny Ella	S	3/6	50	1/4					2/2		2	3	1	3	5		2				1			51:15
26	HOVDEN Emilie Margrethe		1/2	50			1/2															1			6:27
33	DEILA Thale Rushfeldt		2/4	50	1/2					1/2		1	1		1										11:40
	Team / bench																								
	UKUPNO		23/40	58	5/11	5/7	5/10	3/4	0/0	5/7	0/1	13	10	4	6	12	1	6	1	0	4	0	0		

Goalkeepers		Saves / shots								
#	Surname and name	Tot.	%	9m	6m	Wing	7m	FB	Brk.	LD
12	SOLBERG Silje Margaretha	7/16	44	3/4	0/2	1/2	2/2	0/1	1/5	
16	LUNDE Katrine	10/25	40	3/6	2/5	0/2	1/3	1/2	3/7	
	TOTAL	17/41	41	6/10	2/7	1/4	3/5	1/3	4/12	0/0

Coach: Thorir Hergeirsson

Number of attacks: 49, Efficiency: 47%, Average Duration: 36.39 seconds

### Attack by type of defense

	Shots	9m	6m	Wing	TF	E7	E2
On def. 6-0	20/35	5/11	5/7	5/10	12	4	5
On def. 5-1	0/0	0/0	0/0	0/0	0	0	1
Fastbreak	0/0				0	0	0

### Defense by type

	Total	9m	6m	Wing	Stl.	C7	2m
Def. 6-0	20/38	4/12	5/7	3/5	1	6	0
Fastbreak	2/4				0	0	4

### Attack with superiority / minority / goalkeeper out

	Attack				Reaction		
	Att.	Eff.	Shots	TF	FB	LD	Tot.
7 on 6 (GK out)	3	0%	0/3	0	0/0	0/0	0/0
6 on 6 (GK out)	4	50%	2/3	1	0/0	0/0	0/0
6 on 6	29	38%	11/19	10			
6 on 5	13	77%	10/12	1			

Player superiority / GK out counted at the end of attack (in case it changes during attack)

### Defense with superiority / minority / goalkeeper out

	Attack				Reaction		
	Att.	Eff.	Shots	TF	FB	LD	Tot.
6 on 6 (GK out)	7	57%	4/7	0	0/0	0/1	0/1
6 on 6	32	47%	15/25	7			
6 on 5	8	50%	4/8	0			
5 on 6	1	100%	1/1	0			

Numbers show attacking numbers of opponent. Lower efficiency of opponent means better defense of this team

# Jersey number Tot. Total shooting 6m 6m (line) shooting 9m 9m shooting Wng Wing shooting FB Fastbreak sh. 7m 7m penalty sh.  
 Brk. Breakthrough sh. LD Long distance sh. As. Assists PC Pass clear chance E7 Earned 7m pen. TF Technical faults St. Steals  
 2m 2m punishments C7. Committed 7m E2 Earned 2m pun. YC. Yellow cards R/B Red/Blue cards Blk. Blocks S Starting Line-up



# 26th IHF Women's World Championship

Denmark • Norway • Sweden

Main Round II, 3. round



## Match Team Statistics

Match No. 86

## France 24 - 23 Norway

(12 - 12) (12 - 11)

10.12.2023. 20:30

Attendance: 6754

Trondheim Spektrum

Referees: Amar Konjicanin (BIH) / Dino Konjicanin (BIH)

### Shot distribution by player

#### 6 M. Aardahl

		1/2
	0/1	

#### 7 S. Skogrand

1/1		
	2/3	

#### 9 N. Mork

1/1		1/2
		1/1
		1/1

1 miss.

#### 10 S. Oftedal

	0/2	1/1
		2/2

#### 13 K. Brattset Dale


#### 14 K. Breistol


#### 15 V. Ingstad

		1/1
		1/1
1/1	1/1	0/1

#### 21 I. Bakkerud


#### 22 K. Novak


#### 23 C. Herrem

	1/2	1/1

1 post 1 miss.

#### 24 S. Solberg-Isaksen


#### 25 H. Reistad

2/2		0/1
		1/1

1 miss. 1 block

#### 26 E. Hovden

1/1		0/1

#### 33 T. Deila

1/1		
	1/1	

1 post 1 miss.

### TOTAL

4/4		3/6
2/2	0/3	3/4
1/1	5/7	5/6

2 post 4 miss. 1 block

### Saves distribution goalkeepers

#### 12 S. Solberg

1/1		1/3
0/2	2/2	1/1
1/3	0/2	1/2

#### 16 K. Lunde

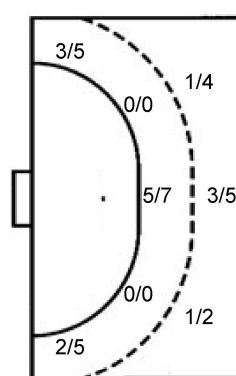
0/4		0/2
0/1	3/3	
0/1	4/5	3/7

### TOTAL

1/5		1/5
0/3	5/5	1/1
1/4	4/7	4/9

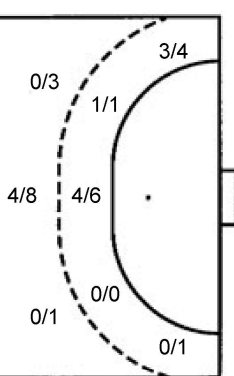
### Shots by position

#### ATTACK



7m penalties 3/4  
Fastbreak 0/0  
Breakthrough 5/7  
Long dist. 0/1

#### DEFENSE



7m penalties 2/6  
Fastbreak 2/4  
Breakthrough 8/14  
Long dist. 0/0

### Shooting statistics

Position	Goals	Sav.	Miss.	Post	Blk.	Total	%
Back (9m)	5	3	2	0	1	11	45
Line (6m)	5	2	0	0	0	7	71
Wing	5	3	1	1	0	10	50
7m penalties	3	0	1	0	0	4	75
Fastbreak	0	0	0	0	0	0	0
Breakthrough	5	1	0	1	0	7	71
<b>Total</b>	<b>23</b>	<b>9</b>	<b>4</b>	<b>2</b>	<b>1</b>	<b>39</b>	<b>59</b>

# Jersey number Tot. Total shooting 6m 6m (line) shooting 9m 9m shooting Wng Wing shooting FB Fastbreak sh. 7m 7m penalty sh.  
Brk. Breakthrough sh. LD Long distance sh. As. Assists PC Pass clear chance E7 Earned 7m pen. TF Technical faults St. Steals  
2m 2m punishments C7. Committed 7m E2 Earned 2m pun. YC. Yellow cards R/B Red/Blue cards Blk. Blocks S Starting Line-up

Handball statistics and livescore by Toma-soft ltd (www.toma-soft.hr)



# 26th IHF Women's World Championship

Denmark • Norway • Sweden

Main Round II, 3. round



## Match Team Statistics

Match No. 86

## France 24 - 23 Norway

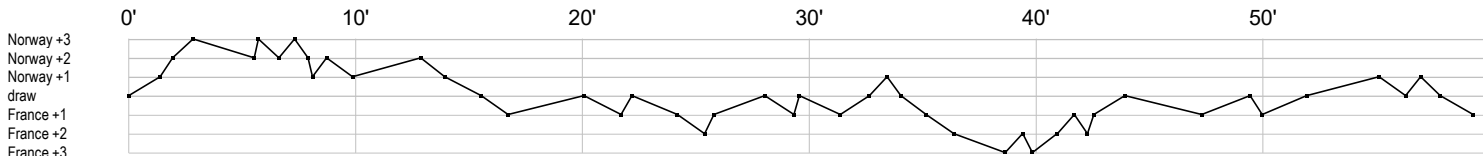
(12 - 12) (12 - 11)

10.12.2023. 20:30

Attendance: 6754

Trondheim Spektrum

Referees: Amar Konjicanin (BIH) / Dino Konjicanin (BIH)



### France

1 Glauser L	r r r r r r r s s r s r r r s s r p i s r s r r s r r r r r s r r r r r
2 Nocandy M	2 t a a f g t t
3 Toubianc A	f fg 2c t
6 Valentini C	f g g b g
8 Lassource C	
10 Zaadi Deuna	p fp g e a f p
20 Flippes L	g g f 2 f c 2 2
21 Kanor O	g f i a g g f g t f t x f
22 Horacek T	c f g f f a b g f a
26 Foppa P	c2 e g e
27 Nze Minko E	f p f g bg p g t a a i g g a g
29 Ondono O	
31 Granier L	f
32 Bouktit S	i g f t g fg
34 Grandveau L	f f p e fei b
99 Sako H	r

### Norway

6 Aardahl M	x t2 f t e g f
7 Skogrand S	g g g c 2
9 Mork N	a a p g g e f a t g f a g t a a
10 Oftedal S	g t f a a f p p p a a g p g t
12 Solberg S	s s s r r r r s r s s
13 Brattset Dale	
14 Breistol K	
15 Ingstad V	g c g f g g i
16 Lunde K	r r s r s r r s s s r r s r r r r s r r
21 Bakkerud I	c
22 Novak K	
23 Herrem C	f g c f i e g f
24 Solberg-Isaksen	
25 Reistad H	g ei t f i t t p t f p p i a gc2 a f c g t
26 Hovden E	g f2
33 Deila T	a g i fg f p

In game	<b>g</b> Goal scored	<b>f</b> Missed shot	<b>a</b> Assist	<b>t</b> Technical faults	<b>b</b> Steal
<b>2</b> 2min suspension	<b>e</b> Earned 7m	<b>c</b> Committed 7m	<b>y</b> Yellow card	<b>r</b> Red Card	<b>k</b> Blue card
<b>i</b> Earned 2min.	<b>x</b> Block	<b>4</b> 4min suspension	<b>p</b> Pass for clear chance	<b>s</b> Saved shot	<b>r</b> Received goal