





# 26th IHF Women's World Championship

Denmark • Norway • Sweden

Main Round II, 3. round



## Match Team Statistics

Match No. 84

## Angola 33 - 31 Republic of Korea

(20 - 15) (13 - 16)

10.12.2023. 15:30

Attendance: 1716

Trondheim Spektrum

Referees: Vladimir Jovandic (SRB) / Marko Sekulic (SRB)

### Shot distribution by player

<b>5 L. Mario</b> 1 post 2/2	<b>6 J. Machado</b> 1/1 1/1	<b>7 D. Rosario</b> 1 miss. 0/1 1/1	<b>8 H. Paulo</b>	<b>9 N. Santos</b> 1 post 1/1 lob 2/2	<b>10 A. Kassoma</b> 1 miss. 1/1 1/1 1/1 1/1 1/1 6/6	<b>11 M. Quizelete</b> 0/1 1/1
<b>13 N. Fonseca</b> 1 post 0/1	<b>18 C. Gabriel</b> 1 post 1/1	<b>20 S. Pascoal</b> 1 post 1 miss. 1 block 1/1 1/1 1/1 0/1	<b>25 L. Venancio</b>	<b>35 A. Carlos</b> 1 miss. 0/1 0/1 0/1 2/3	<b>78 B. Belo</b>	<b>90 I. Guialo</b> 1/1 2/2 0/1 3/3 0/1

### TOTAL

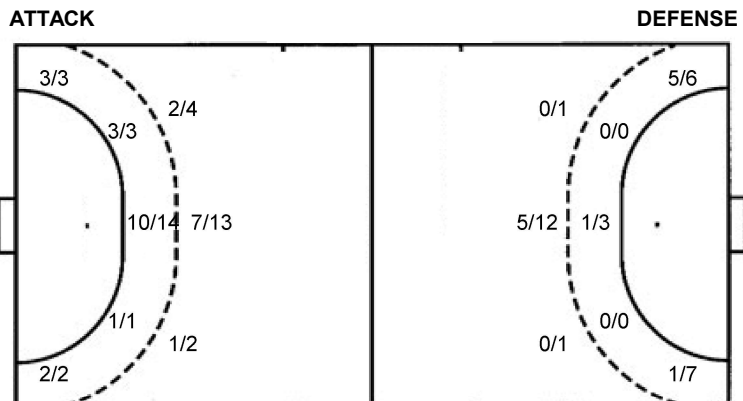
4/4	3/3	4/5
2/2	0/3	0/2
3/4	4/5	12/14

4 post 4 miss. 1 block 1/1 lob

### Saves distribution goalkeepers

<b>1 M. Alberto</b> 1/5 1/1 1/4 1/1 4/4 1/2 4/12 2/6 1/9	<b>16 T. Almeida</b> 0/1 0/1	<b>TOTAL</b> 1/6 1/1 1/4 1/1 4/4 1/2 4/12 2/6 1/10
---	------------------------------------	---

### Shots by position



7m penalties 1/2  
Fastbreak 1/2  
Breakthrough 2/6  
Long dist. 0/0

7m penalties 6/6  
Fastbreak 9/9  
Breakthrough 3/5  
Long dist. 0/0

### Shooting statistics

Position	Goals	Sav.	Miss.	Post	Blk.	Total	%
Back (9m)	10	7	1	0	1	19	53
Line (6m)	14	1	3	0	0	18	78
Wing	5	0	0	0	0	5	100
7m penalties	1	0	0	1	0	2	50
Fastbreak	1	0	0	1	0	2	50
Breakthrough	2	2	0	2	0	6	33
<b>Total</b>	<b>33</b>	<b>10</b>	<b>4</b>	<b>4</b>	<b>1</b>	<b>52</b>	<b>63</b>

# Jersey number Tot. Total shooting 6m 6m (line) shooting 9m 9m shooting Wng Wing shooting FB Fastbreak sh. 7m 7m penalty sh.  
Brk. Breakthrough sh. LD Long distance sh. As. Assists PC Pass clear chance E7 Earned 7m pen. TF Technical faults St. Steals  
2m 2m punishments C7. Committed 7m E2 Earned 2m pun. YC. Yellow cards R/B Red/Blue cards Blk. Blocks S Starting Line-up

Handball statistics and livescore by Toma-soft ltd (www.toma-soft.hr)



# 26th IHF Women's World Championship

Denmark • Norway • Sweden

Main Round II, 3. round



Match Team Statistics

Match No. 84

## Angola 33 - 31 Republic of Korea

(20 - 15) (13 - 16)

10.12.2023. 15:30

Attendance: 1716

Trondheim Spektrum

Referees: Vladimir Jovandic (SRB) / Marko Sekulic (SRB)

### Republic of Korea

Players		Goals / shots									Attack				Def.			Penalties				TP			
#	Surname and name	S	Tot.	%	9m	6m	Wing	7m	FB	Brk.	LD	As.	PC	E7	E2	TF	St.	C7	Blk	YC	2m		R	B	
6	SONG Jiyoung	S	7/13	54			2/8		5/5			1					1							45:51	
7	SHIN Eunjoo	S	4/5	80			3/4		1/1				1			1		1						53:50	
11	RYU Eun Hee	S	5/10	50	1/6			1/1	1/1	2/2		3	4	3	1	4								38:29	
12	JEONG Jinhui	S																						11:23	
16	PARK Saeyoung											1				2								47:31	
17	JO Suyeon		0/1	0	0/1							1												29:24	
19	KANG Eunhye	S	1/1	100		1/1										1		1			1			33:31	
20	JO Eunbeen													1	1									3:33	
22	WOO Bitna		9/12	75	3/4			5/5		1/3		4	2	2		1								43:19	
26	KANG Eunseo																							24:02	
29	YUN Yejin		2/2	100			1/1		1/1															4:28	
31	GIM Boeun	S	1/3	33		0/2			1/1			4	1			1	1							41:14	
33	SHIN Jinmi	S	2/3	67	1/2		1/1					5	2											32:15	
34	LEE Hyewon		0/1	0	0/1											2								11:10	
97	KIM Sejin																								
	Team / bench																								
	UKUPNO		31/51	61	5/14	1/3	7/14	6/6	9/9	3/5	0/0	19	10	6	2	12	2	2	0	0	1	0	0		

Goalkeepers		Saves / shots								
#	Surname and name	Tot.	%	9m	6m	Wing	7m	FB	Brk.	LD
12	JEONG Jinhui	1/11	9	1/5	0/4	0/2				
16	PARK Saeyoung	9/32	28	6/12	1/11	0/3	0/1	0/1	2/4	
	TOTAL	10/43	23	7/17	1/15	0/5	0/1	0/1	2/4	0/0

Coach: Henrik Signell

Number of attacks: 60, Efficiency: 52%, Average Duration: 30.47 seconds

#### Attack by type of defense

	Shots	9m	6m	Wing	TF	E7	E2
On def. 6-0	15/35	5/14	1/3	6/13	12	6	2
Fastbreak	9/9				0	0	0

#### Defense by type

	Total	9m	6m	Wing	Stl.	C7	2m
Def. 6-0	28/43	9/16	14/18	4/4	2	2	0
Def. 5-1	3/5	1/3	0/0	1/1	0	0	0
Fastbreak	1/2				0	0	1

#### Attack with superiority / minority / goalkeeper out

	Attack				Reaction		
	Att.	Eff.	Shots	TF	FB	LD	Tot.
6 on 6	57	49%	28/45	12			
6 on 5	3	100%	3/3	0			

Player superiority / GK out counted at the end of attack (in case it changes during attack)

#### Defense with superiority / minority / goalkeeper out

	Attack				Reaction		
	Att.	Eff.	Shots	TF	FB	LD	Tot.
6 on 6 (GK out)	2	100%	2/2	0	0/0	0/0	0/0
6 on 5 (GK out)	1	100%	1/1	0	0/0	0/0	0/0
6 on 6	58	50%	29/46	12			
6 on 5	1	100%	1/1	0			

Numbers show attacking numbers of opponent. Lower efficiency of opponent means better defense of this team

# Jersey number Tot. Total shooting 6m 6m (line) shooting 9m 9m shooting Wng Wing shooting FB Fastbreak sh. 7m 7m penalty sh.  
 Brk. Breakthrough sh. LD Long distance sh. As. Assists PC Pass clear chance E7 Earned 7m pen. TF Technical faults St. Steals  
 2m 2m punishments C7. Committed 7m E2 Earned 2m pun. YC. Yellow cards R/B Red/Blue cards Blk. Blocks S Starting Line-up



# 26th IHF Women's World Championship

Denmark • Norway • Sweden

Main Round II, 3. round



Match Team Statistics

Match No. 84

## Angola 33 - 31 Republic of Korea

(20 - 15) (13 - 16)

10.12.2023. 15:30

Attendance: 1716

Trondheim Spektrum

Referees: Vladimir Jovandic (SRB) / Marko Sekulic (SRB)

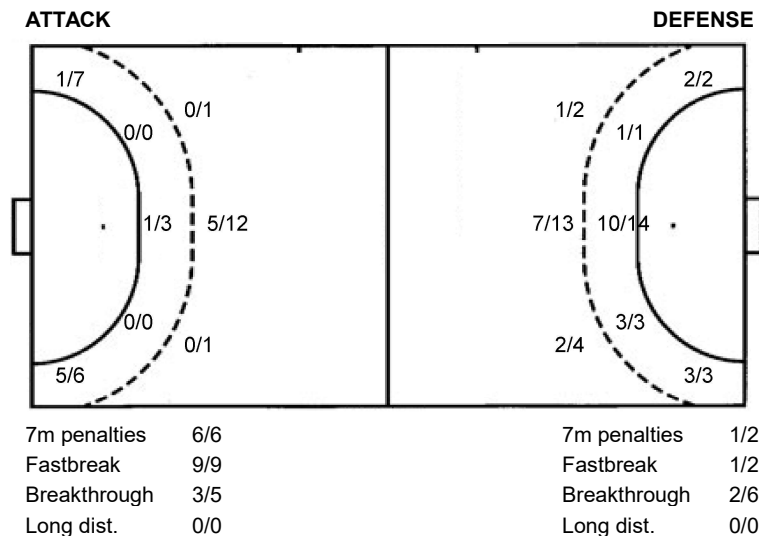
### Shot distribution by player

<b>6 J. Song</b> 2/2 0/1 1/1 0/1 1/1 2/4 1/2 1 post	<b>7 E. Shin</b> 0/1 2/2 1/1 1/1 lob	<b>11 E. Ryu</b> 1/1 0/3 1/3 3/3	<b>17 S. Jo</b> 0/1	<b>19 E. Kang</b> 1/1	<b>20 E. Jo</b>	<b>22 B. Woo</b> 1/1 0/1 3/3 1/1 4/4 1 miss. 1 block
<b>26 E. Kang</b>	<b>29 Y. Yun</b> 1/1 1/1	<b>31 B. Gim</b> 1/2 1 post	<b>33 J. Shin</b> 1/1 0/1 1/1	<b>34 H. Lee</b> 0/1	<b>97 S. Kim</b>	<b>TOTAL</b> 5/6 0/1 3/4 0/1 0/4 1/2 8/12 4/6 9/10 2 post 1 miss. 1 block 1/1 lob

### Saves distribution goalkeepers

<b>12 J. Jeong</b> 0/1 0/1 1/1 0/2 0/1 0/5	<b>16 S. Park</b> 0/4 0/2 1/4 0/2 3/3 1/1 1/2 1/4 2/9	<b>TOTAL</b> 0/4 0/3 1/5 0/2 3/3 2/2 1/4 1/5 2/14
---	--	--

### Shots by position



### Shooting statistics

Position	Goals	Sav.	Miss.	Post	Blk.	Total	%
Back (9m)	5	8	0	0	1	14	36
Line (6m)	1	1	0	1	0	3	33
Wing	6	6	0	1	0	13	46
7m penalties	6	0	0	0	0	6	100
Fastbreak	9	0	0	0	0	9	100
Breakthrough	3	1	1	0	0	5	60
<b>Total</b>	<b>30</b>	<b>16</b>	<b>1</b>	<b>2</b>	<b>1</b>	<b>50</b>	<b>60</b>

# Jersey number    Tot. Total shooting    6m 6m (line) shooting    9m 9m shooting    Wng Wing shooting    FB Fastbreak sh.    7m 7m penalty sh.  
 Brk. Breakthrough sh.    LD Long distance sh.    As. Assists    PC Pass clear chance    E7 Earned 7m pen.    TF Technical faults    St. Steals  
 2m 2m punishments    C7. Committed 7m    E2 Earned 2m pun.    YC. Yellow cards    R/B Red/Blue cards    Blk. Blocks    S Starting Line-up

Handball statistics and livescore by Toma-soft ltd (www.toma-soft.hr)



# 26th IHF Women's World Championship

Denmark • Norway • Sweden

Main Round II, 3. round



## Match Team Statistics

Match No. 84

## Angola 33 - 31 Republic of Korea

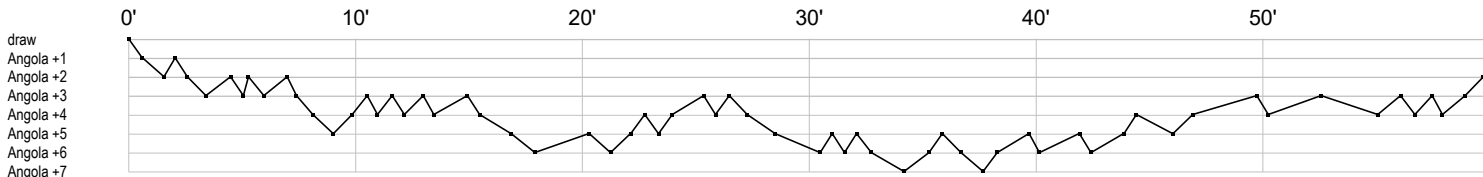
(20 - 15) (13 - 16)

10.12.2023. 15:30

Attendance: 1716

Trondheim Spektrum

Referees: Vladimir Jovandic (SRB) / Marko Sekulic (SRB)



### Angola

1	Alberto M	s r s r r sr s s r r r r s r r r r r sp s r r r r r r s s r s r r r sr s s r s r s r f
5	Mario L	c g f g 2c x
6	Machado J	g c g b
7	Rosario D	f g f 2
8	Paulo H	
9	Santos N	g g c g f t t
10	Kassoma A	g g g g g f a a g ei g g g g c x g t
11	Quizelete M	a g t f
13	Fonseca N	g f e c
16	Almeida T	r r
18	Gabriel C	t f gb a
20	Pascoal S	a f t p g t a t g f f a g f t c
25	Venancio L	
35	Carlos A	a g a y g f ba a a a t f fa f a f p
78	Belo B	
90	Guialo I	a a g a a g g f gp a t g t f g

### Republic of Korea

6	Song J	f g g g g g f f g bag f f g
7	Shin E	g f g c g p t g
11	Ryu E	a t p f g a g e p ft ie a g t p pf g f t e f g
12	Jeong J	r r r r s r r r r r r
16	Park S	r r r r r r s s r r s r r r t r r r r r r s r sa sr s s r s tr r r
17	Jo S	a f
19	Kang E	c2 g t
20	Jo E	ie
22	Woo B	p fe g g t a g a p g f g g a eg a f g g
26	Kang E	
29	Yun Y	g g
31	Gim B	fa t ba fa p a g
33	Shin J	p p a a g g a f a
34	Lee H	f t t
97	Kim S	

In game	<b>g</b> Goal scored	<b>f</b> Missed shot	<b>a</b> Assist	<b>t</b> Technical faults	<b>b</b> Steal
<b>2</b> 2min suspension	<b>e</b> Earned 7m	<b>c</b> Committed 7m	<b>y</b> Yellow card	<b>r</b> Red Card	<b>k</b> Blue card
<b>i</b> Earned 2min.	<b>x</b> Block	<b>4</b> 4min suspension	<b>p</b> Pass for clear chance	<b>s</b> Saved shot	<b>r</b> Received goal