



26th IHF Women's World Championship

Denmark • Norway • Sweden

Main Round IV, 3. round



Match Team Statistics

Match No. 83

Netherlands 29 - 21 Spain

(13 - 9) (16 - 12)

10.12.2023. 16:30

Attendance: 1314

Arena Nord

Referees: Mads Hansen (DEN) / Jesper Madsen (DEN)

Netherlands

| # | Surname and name | S | Goals / shots | | | | | | | | Attack | | | | Def. | | | Penalties | | | | TP | | | |
|----|-----------------------|---|---------------|-----|------|-----|-------|-----|-----|------|--------|-----|----|----|------|----|-----|-----------|-----|----|----|----|---|---|-------|
| | | | Tot. | % | 9m | 6m | Wing | 7m | FB | Brk. | LD | As. | PC | E7 | E2 | TF | St. | C7 | Blk | YC | 2m | | R | B | |
| 6 | VAN DER HEIJDEN Laura | | 3/4 | 75 | 1/2 | 1/1 | | | | | | | | | 3 | 1 | | | | | | | | | 32:50 |
| 8 | ABBINGH Lois | | 2/4 | 50 | 2/4 | | | | | | | | | | 1 | | | | | | | | | | 21:20 |
| 9 | NÜSSER Larissa | S | 2/2 | 100 | | | | | | 2/2 | | | | 4 | 1 | | | | | | | | | | 23:32 |
| 12 | VAN WETERING Bo | S | 2/3 | 67 | | 0/1 | 2/2 | | | | | | | | | | | | | | | | | | 33:44 |
| 13 | BROCH Yvette | S | | | | | | | | | | | | | | | 1 | | | | | 2 | | | 15:47 |
| 16 | HAGGERTY Tamara | | | | | | | | | | | | | | | | 1 | | | | | 1 | | | 7:34 |
| 18 | DULFER Kelly | S | 2/2 | 100 | | | | | | 2/2 | | | | 4 | 1 | | 1 | 2 | 1 | 1 | 2 | | | | 37:39 |
| 20 | SMITS Inger | | 1/2 | 50 | 0/1 | | | | | 1/1 | | | | | 1 | 1 | | | | | | | | | 31:56 |
| 22 | SPRENGERS Zoë | | 6/7 | 86 | | | 4/4 | | 2/2 | 0/1 | | | | | | | | | | | | | | | 26:22 |
| 26 | MALESTEIN Angela | S | 5/6 | 83 | | | 3/4 | 2/2 | | | | | | | | | 1 | | | | | | | | 47:45 |
| 30 | DUIJNDAM Rinka | | | | | | | | | | | | | | | | | | | | | | | | 10:02 |
| 31 | VOLLEBREGT Kelly | | 0/1 | 0 | | | 0/1 | | | | | | | | | | | | | | | | | | 6:46 |
| 38 | TEN HOLTE Yara | S | | | | | | | | | | | | | | | | | | | | | | | 45:58 |
| 44 | VAN DER VLIET Nikita | | 3/4 | 75 | | 3/4 | | | | | | | | | | 1 | | | | 2 | 1 | | 1 | | 46:08 |
| 48 | HOUSHEER Dione | S | 2/4 | 50 | 1/2 | | 1/1 | | | 0/1 | | | | 5 | | | | | | | | | | | 27:16 |
| 79 | POLMAN Estavana | | 1/3 | 33 | 0/1 | | | | | 1/2 | | | | | | | | | | | | | | | 5:21 |
| | Team / bench | | | | | | | | | | | | | | | | | | | | | | | | |
| | UKUPNO | | 29/42 | 69 | 4/10 | 4/6 | 10/12 | 2/2 | 2/2 | 7/10 | 0/0 | | | 15 | 4 | 2 | 1 | 16 | 4 | 3 | 3 | 0 | 3 | 0 | 0 |

| Goalkeepers | | Saves / shots | | | | | | | | |
|-------------|------------------|---------------|----|------|-----|------|-----|-----|------|-----|
| # | Surname and name | Tot. | % | 9m | 6m | Wing | 7m | FB | Brk. | LD |
| 30 | DUIJNDAM Rinka | 2/9 | 22 | 0/3 | 1/1 | 1/1 | 0/1 | | 0/3 | |
| 38 | TEN HOLTE Yara | 10/22 | 45 | 4/8 | 1/3 | 4/5 | 0/1 | 0/3 | 1/2 | |
| | TOTAL | 12/31 | 39 | 4/11 | 2/4 | 5/6 | 0/2 | 0/3 | 1/5 | 0/0 |

Coach: Per Johansson

Number of attacks: 56, Efficiency: 52%, Average Duration: 32.57 seconds

Attack by type of defense

| | Shots | 9m | 6m | Wing | TF | E7 | E2 |
|---------------|-------|-----|-----|------|----|----|----|
| On def. 6-0 | 13/21 | 3/8 | 2/3 | 4/4 | 9 | 1 | 1 |
| On def. 5-1 | 0/1 | 0/0 | 0/1 | 0/0 | 1 | 0 | 0 |
| On def. 3-2-1 | 12/16 | 1/2 | 2/2 | 6/8 | 6 | 1 | 0 |
| Fastbreak | 2/2 | | | | 0 | 0 | 0 |

Defense by type

| | Total | 9m | 6m | Wing | Stl. | C7 | 2m |
|-----------|-------|------|-----|------|------|----|----|
| Def. 6-0 | 14/36 | 7/15 | 2/5 | 1/10 | 4 | 3 | 0 |
| Fastbreak | 5/5 | | | | 0 | 0 | 3 |

Attack with superiority / minority / goalkeeper out

| | Attack | | | | Reaction | | |
|-----------------|--------|------|-------|----|----------|-----|------|
| | Att. | Eff. | Shots | TF | FB | LD | Tot. |
| 6 on 6 (GK out) | 6 | 17% | 1/2 | 4 | 3/3 | 0/0 | 3/3 |
| 6 on 6 | 47 | 55% | 26/35 | 12 | | | |
| 6 on 5 | 3 | 67% | 2/3 | 0 | | | |

Player superiority / GK out counted at the end of attack (in case it changes during attack)

Defense with superiority / minority / goalkeeper out

| | Attack | | | | Reaction | | |
|-----------------|--------|------|-------|----|----------|-----|------|
| | Att. | Eff. | Shots | TF | FB | LD | Tot. |
| 6 on 6 (GK out) | 2 | 0% | 0/2 | 0 | 0/0 | 0/0 | 0/0 |
| 6 on 6 | 45 | 33% | 15/30 | 15 | | | |
| 6 on 5 | 7 | 86% | 6/6 | 1 | | | |

Numbers show attacking numbers of opponent. Lower efficiency of opponent means better defense of this team

Jersey number Tot. Total shooting 6m 6m (line) shooting 9m 9m shooting Wng Wing shooting FB Fastbreak sh. 7m 7m penalty sh.
 Brk. Breakthrough sh. LD Long distance sh. As. Assists PC Pass clear chance E7 Earned 7m pen. TF Technical faults St. Steals
 2m 2m punishments C7. Committed 7m E2 Earned 2m pun. YC. Yellow cards R/B Red/Blue cards Blk. Blocks S Starting Line-up



26th IHF Women's World Championship

Denmark • Norway • Sweden

Main Round IV, 3. round



Match Team Statistics

Match No. 83

Netherlands 29 - 21 Spain

(13 - 9) (16 - 12)

10.12.2023. 16:30

Attendance: 1314

Arena Nord

Referees: Mads Hansen (DEN) / Jesper Madsen (DEN)

Shot distribution by player

6 L. Van Der Heijden

| | | |
|-----|-----|--|
| | | |
| | | |
| 1/2 | 2/2 | |

8 L. Abbingh

| | | |
|-----|--|-----|
| 1/1 | | 0/1 |
| | | |
| 1/1 | | 0/1 |

9 L. Nüsser

| | | |
|-----|-----|--|
| | | |
| | | |
| 1/1 | 1/1 | |

12 B. Van Wetering

| | | |
|-----|--|--|
| | | |
| | | |
| 1/1 | | |

1 miss. 1/1 lob

13 Y. Broch

| | | |
|--|--|--|
| | | |
| | | |
| | | |

16 T. Haggerty

| | | |
|--|--|--|
| | | |
| | | |
| | | |

18 K. Dulfer

| | | |
|--|-----|-----|
| | | |
| | | |
| | 1/1 | 1/1 |

20 I. Smits

| | | |
|--|--|-----|
| | | 0/1 |
| | | |
| | | |

1/1 lob

22 Z. Sprengers

| | | |
|-----|--|-----|
| | | 2/2 |
| 0/1 | | 1/1 |
| 2/2 | | 1/1 |

26 A. Malestein

| | | |
|-----|-----|-----|
| | | |
| 2/3 | 1/1 | |
| 1/1 | | 1/1 |

31 K. Vollebregt

| | | |
|--|--|--|
| | | |
| | | |
| | | |

1 post

44 N. Van Der Vliet

| | | |
|-----|--|-----|
| | | 1/1 |
| | | |
| 1/1 | | 1/1 |

1 miss.

48 D. Housheer

| | | |
|-----|--|-----|
| 1/1 | | |
| | | 0/1 |
| 1/1 | | |

1 miss.

79 E. Polman

| | | |
|--|--|-----|
| | | |
| | | 0/2 |
| | | 1/1 |

TOTAL

| | | |
|------|-----|-----|
| 2/2 | | 3/5 |
| 2/4 | 1/1 | 1/4 |
| 9/10 | 4/4 | 5/6 |

1 post 3 miss. 2/2 lob

Saves distribution goalkeepers

30 R. Duijndam

| | | |
|-----|-----|-----|
| 0/1 | | |
| 0/3 | | 1/1 |
| 0/1 | 1/1 | 0/2 |

38 Y. Ten Holte

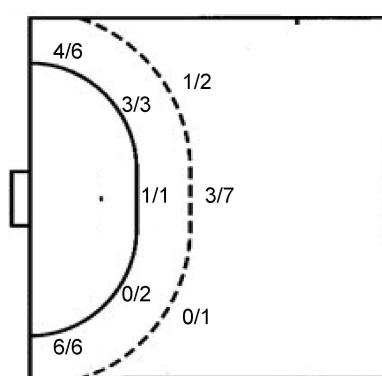
| | | |
|-----|-----|-----|
| | | 0/1 |
| 1/1 | 1/1 | 3/5 |
| 2/5 | 1/3 | 1/3 |

TOTAL

| | | |
|-----|-----|-----|
| 0/1 | | 0/1 |
| 1/4 | 1/1 | 4/6 |
| 2/6 | 2/4 | 1/5 |

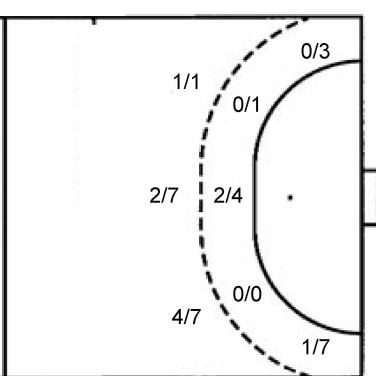
Shots by position

ATTACK



7m penalties 2/2
Fastbreak 2/2
Breakthrough 7/10
Long dist. 0/0

DEFENSE



7m penalties 2/3
Fastbreak 5/5
Breakthrough 4/6
Long dist. 0/0

Shooting statistics

| Position | Goals | Sav. | Miss. | Post | Blk. | Total | % |
|--------------|-----------|----------|----------|----------|----------|-----------|-----------|
| Back (9m) | 4 | 5 | 1 | 0 | 0 | 10 | 40 |
| Line (6m) | 4 | 0 | 2 | 0 | 0 | 6 | 67 |
| Wing | 10 | 1 | 0 | 1 | 0 | 12 | 83 |
| 7m penalties | 2 | 0 | 0 | 0 | 0 | 2 | 100 |
| Fastbreak | 2 | 0 | 0 | 0 | 0 | 2 | 100 |
| Breakthrough | 7 | 3 | 0 | 0 | 0 | 10 | 70 |
| Total | 29 | 9 | 3 | 1 | 0 | 42 | 69 |

Jersey number Tot. Total shooting 6m 6m (line) shooting 9m 9m shooting Wng Wing shooting FB Fastbreak sh. 7m 7m penalty sh.
Brk. Breakthrough sh. LD Long distance sh. As. Assists PC Pass clear chance E7 Earned 7m pen. TF Technical faults St. Steals
2m 2m punishments C7. Committed 7m E2 Earned 2m pun. YC. Yellow cards R/B Red/Blue cards Blk. Blocks S Starting Line-up

Handball statistics and livescore by Toma-soft ltd (www.toma-soft.hr)



26th IHF Women's World Championship

Denmark • Norway • Sweden

Main Round IV, 3. round



Match Team Statistics

Match No. 83

Netherlands 29 - 21 Spain

(13 - 9) (16 - 12)

10.12.2023. 16:30

Attendance: 1314

Arena Nord

Referees: Mads Hansen (DEN) / Jesper Madsen (DEN)

Spain

| # | Surname and name | S | Goals / shots | | | | | | | | Attack | | | | Def. | | | Penalties | | | | TP | | | |
|----|----------------------------------|---|---------------|-----|------|-----|------|-----|-----|------|--------|-----|----|----|------|----|-----|-----------|-----|----|----|----|---|-------|---|
| | | | Tot. | % | 9m | 6m | Wing | 7m | FB | Brk. | LD | As. | PC | E7 | E2 | TF | St. | C7 | Blk | YC | 2m | | R | B | |
| 2 | LOPEZ HERRERO Marta | | 0/2 | 0 | | | 0/2 | | | | | | | | 1 | | | | | | | | | 34:24 | |
| 6 | CAMPOS COSTA Carmen | | | | | | | | | | | | | | | | | | | | | | | | |
| 8 | ARDERIUS MARTIN Silvia | | | | | | | | | | | | | 3 | | 2 | | | | | | | | 14:48 | |
| 16 | CASTELLANOS SOANEZ Mercedes | S | | | | | | | | | | | | | | | | | | | | | | 30:07 | |
| 18 | ECHEVERRIA MARTINEZ Maitane | S | 1/5 | 20 | | | 1/5 | | | | | | | | | | | | | | | | | 36:21 | |
| 19 | SOMAZA BOSCH Ester | | 0/2 | 0 | 0/2 | | | | | | | | | 1 | | | | | | | | | | 16:04 | |
| 22 | GONZALEZ ORTEGA Lara | | | | | | | | | | | | | 1 | | | | | | | | | | 22:00 | |
| 27 | SO DELGADO-PINTO Danila Patricia | | 5/5 | 100 | 3/3 | | | | | 2/2 | | | | | | | | | | | | | | 4:39 | |
| 30 | LOPEZ JIMENEZ Soledad | S | 3/7 | 43 | | 2/2 | 0/3 | 0/1 | 1/1 | | | | | 1 | | | 1 | 1 | | | | | | 57:36 | |
| 33 | GASSAMA CISSOKHO Kaba | | 0/1 | 0 | | 0/1 | | | | | | | | | | 1 | | | | | | | | 24:02 | |
| 34 | FERNANDEZ FRAGA Alicia | S | 2/3 | 67 | | | | | 1/1 | 1/2 | | | | 1 | | 3 | | | | | | | | 27:58 | |
| 48 | ZOQBI DE PAULA Darly | | | | | | | | | | | | | | | | | | | | | | | 28:32 | |
| 52 | PEREZ BUFORN Paulina | | 2/3 | 67 | 0/1 | | | 1/1 | | 1/1 | | | | | | | | | | | | | | 17:05 | |
| 61 | TCHAPTCHET DEFO Lysa | S | 0/1 | 0 | | 0/1 | | | | | | | | 1 | | 3 | 2 | 1 | | | | 1 | | 37:28 | |
| 62 | ARCOS POVEDA Paula | S | 3/5 | 60 | 1/1 | 0/1 | | | 2/2 | 0/1 | | | | 2 | 4 | | 1 | 5 | 3 | 1 | | | | 47:54 | |
| 99 | GONZALEZ ALVAREZ Mireya | S | 5/10 | 50 | 3/8 | | | 1/1 | 1/1 | | | | | 1 | 3 | | | 3 | | | | 1 | | 21:02 | |
| | Team / bench | | | | | | | | | | | | | | | | | 1 | | | | | | | |
| | UKUPNO | | 21/44 | 48 | 7/15 | 2/5 | 1/10 | 2/3 | 5/5 | 4/6 | 0/0 | | | 6 | 12 | 3 | 3 | 16 | 5 | 2 | 0 | 0 | 2 | 0 | 0 |

| # | Surname and name | Saves / shots | | | | | | | | |
|----|-----------------------------|---------------|----|-----|-----|------|-----|-----|------|-----|
| | | Tot. | % | 9m | 6m | Wing | 7m | FB | Brk. | LD |
| 16 | CASTELLANOS SOANEZ Mercedes | 4/17 | 24 | 2/2 | 0/4 | 0/3 | 0/1 | 0/1 | 2/6 | |
| 48 | ZOQBI DE PAULA Darly | 5/21 | 24 | 3/7 | | 1/8 | 0/1 | 0/1 | 1/4 | |
| | TOTAL | 9/38 | 24 | 5/9 | 0/4 | 1/11 | 0/2 | 0/2 | 3/10 | 0/0 |

Coach: Ambrosio Jose Martin Cedres

Number of attacks: 54, Efficiency: 39%, Average Duration: 32.50 seconds

Attack by type of defense

| | Shots | 9m | 6m | Wing | TF | E7 | E2 |
|-------------|-------|------|-----|------|----|----|----|
| On def. 6-0 | 14/36 | 7/15 | 2/5 | 1/10 | 16 | 3 | 3 |
| Fastbreak | 5/5 | | | | 0 | 0 | 0 |

Attack with superiority / minority / goalkeeper out

| | Attack | | | | Reaction | | |
|-----------------|--------|------|-------|----|----------|-----|------|
| | Att. | Eff. | Shots | TF | FB | LD | Tot. |
| 6 on 6 (GK out) | 2 | 0% | 0/2 | 0 | 0/0 | 0/0 | 0/0 |
| 6 on 6 | 45 | 33% | 15/30 | 15 | | | |
| 6 on 5 | 7 | 86% | 6/6 | 1 | | | |

Player superiority / GK out counted at the end of attack (in case it changes during attack)

Defense by type

| | Total | 9m | 6m | Wing | Stl. | C7 | 2m |
|------------|-------|-----|-----|------|------|----|----|
| Def. 6-0 | 13/21 | 3/8 | 2/3 | 4/4 | 3 | 1 | 0 |
| Def. 5-1 | 0/1 | 0/0 | 0/1 | 0/0 | 0 | 0 | 0 |
| Def. 3-2-1 | 12/16 | 1/2 | 2/2 | 6/8 | 2 | 1 | 0 |
| Fastbreak | 2/2 | | | | 0 | 0 | 2 |

Defense with superiority / minority / goalkeeper out

| | Attack | | | | Reaction | | |
|-----------------|--------|------|-------|----|----------|-----|------|
| | Att. | Eff. | Shots | TF | FB | LD | Tot. |
| 6 on 6 (GK out) | 6 | 17% | 1/2 | 4 | 3/3 | 0/0 | 3/3 |
| 6 on 6 | 47 | 55% | 26/35 | 12 | | | |
| 6 on 5 | 3 | 67% | 2/3 | 0 | | | |

Numbers show attacking numbers of opponent. Lower efficiency of opponent means better defense of this team

Jersey number Tot. Total shooting 6m 6m (line) shooting 9m 9m shooting Wng Wing shooting FB Fastbreak sh. 7m 7m penalty sh.
 Brk. Breakthrough sh. LD Long distance sh. As. Assists PC Pass clear chance E7 Earned 7m pen. TF Technical faults St. Steals
 2m 2m punishments C7. Committed 7m E2 Earned 2m pun. YC. Yellow cards R/B Red/Blue cards Blk. Blocks S Starting Line-up



26th IHF Women's World Championship

Denmark • Norway • Sweden

Main Round IV, 3. round



Match Team Statistics

Match No. 83

Netherlands 29 - 21 Spain

(13 - 9) (16 - 12)

10.12.2023. 16:30

Attendance: 1314

Arena Nord

Referees: Mads Hansen (DEN) / Jesper Madsen (DEN)

Shot distribution by player

2 M. Lopez Herrero

| | | |
|-----|--|--|
| | | |
| 0/1 | | |
| | | |

1 post

6 C. Campos Costa

| | | |
|--|--|--|
| | | |
| | | |
| | | |

8 S. Arderius Martin

| | | |
|--|--|--|
| | | |
| | | |
| | | |

18 M. Echeverria Martinez

| | | |
|--|-----|--|
| | | |
| | | |
| | | |
| | 0/1 | |

3 miss. 1/1 lob

19 E. Somaza Bosch

| | | |
|--|--|-----|
| | | |
| | | 0/2 |
| | | |

22 L. Gonzalez Ortega

| | | |
|--|--|--|
| | | |
| | | |
| | | |

27 D. So Delgado-Pinto

| | | |
|--|-----|-----|
| | 1/1 | |
| | 2/2 | |
| | 1/1 | 1/1 |

30 S. Lopez Jimenez

| | | |
|-----|-----|-----|
| | | 1/2 |
| 1/1 | 1/2 | |
| | | |

1 post 0/1 lob

33 K. Gassama Cissokho

| | | |
|--|--|--|
| | | |
| | | |
| | | |

1 post

34 A. Fernandez Fraga

| | | |
|-----|-----|--|
| | | |
| | 1/1 | |
| 0/1 | | |

1/1 lob

52 P. Perez Bufom

| | | |
|-----|-----|-----|
| | | |
| 1/1 | 0/1 | |
| | | 1/1 |

61 L. Tchaptchet Defo

| | | |
|-----|--|--|
| | | |
| | | |
| 0/1 | | |

62 P. Arcos Poveda

| | | |
|--|-----|-----|
| | | 1/1 |
| | 1/1 | 0/1 |
| | | 1/1 |

1 miss.

99 M. Gonzalez Alvarez

| | | |
|-----|-----|-----|
| | | 1/1 |
| | | |
| 2/2 | 1/1 | 1/2 |

1 miss. 3 block

TOTAL

| | | |
|-----|-----|-----|
| 1/1 | | 1/1 |
| 3/4 | 2/3 | 2/6 |
| 4/6 | 2/4 | 4/5 |

3 post 5 miss. 3 block 2/3 lob

Saves distribution goalkeepers

16 M. Castellanos Soanez

| | | |
|-----|-----|-----|
| 0/1 | | 1/2 |
| 0/1 | 0/1 | 3/4 |
| 0/3 | 0/2 | 0/3 |

48 D. Zoqbi De Paula

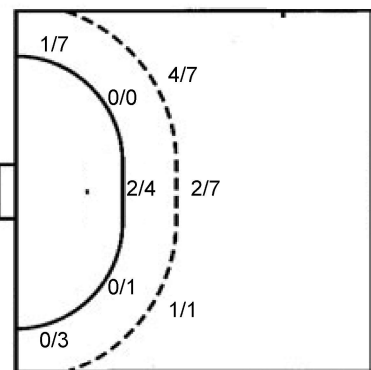
| | | |
|-----|-----|-----|
| 0/1 | | 1/3 |
| 2/3 | | |
| 1/7 | 0/2 | 1/3 |

TOTAL

| | | |
|------|-----|-----|
| 0/2 | | 2/5 |
| 2/4 | 0/1 | 3/4 |
| 1/10 | 0/4 | 1/6 |

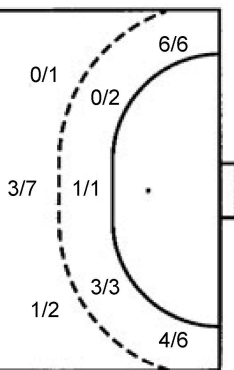
Shots by position

ATTACK



7m penalties 2/3
Fastbreak 5/5
Breakthrough 4/6
Long dist. 0/0

DEFENSE



7m penalties 2/2
Fastbreak 2/2
Breakthrough 7/10
Long dist. 0/0

Shooting statistics

| Position | Goals | Sav. | Miss. | Post | Blk. | Total | % |
|--------------|-----------|-----------|----------|----------|----------|-----------|-----------|
| Back (9m) | 7 | 4 | 1 | 0 | 3 | 15 | 47 |
| Line (6m) | 2 | 2 | 0 | 1 | 0 | 5 | 40 |
| Wing | 1 | 5 | 3 | 1 | 0 | 10 | 10 |
| 7m penalties | 2 | 0 | 0 | 1 | 0 | 3 | 67 |
| Fastbreak | 5 | 0 | 0 | 0 | 0 | 5 | 100 |
| Breakthrough | 4 | 1 | 1 | 0 | 0 | 6 | 67 |
| Total | 21 | 12 | 5 | 3 | 3 | 44 | 48 |

Jersey number Tot. Total shooting 6m 6m (line) shooting 9m 9m shooting Wng Wing shooting FB Fastbreak sh. 7m 7m penalty sh.
Brk. Breakthrough sh. LD Long distance sh. As. Assists PC Pass clear chance E7 Earned 7m pen. TF Technical faults St. Steals
2m 2m punishments C7. Committed 7m E2 Earned 2m pun. YC. Yellow cards R/B Red/Blue cards Blk. Blocks S Starting Line-up

Handball statistics and livescore by Toma-soft ltd (www.toma-soft.hr)



26th IHF Women's World Championship

Denmark • Norway • Sweden

Main Round IV, 3. round



Match Team Statistics

Match No. 83

Netherlands 29 - 21 Spain

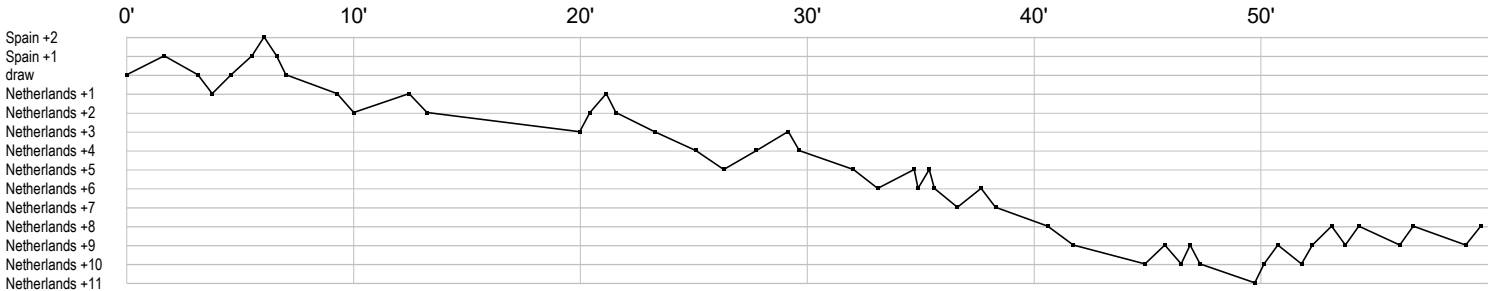
(13 - 9) (16 - 12)

10.12.2023. 16:30

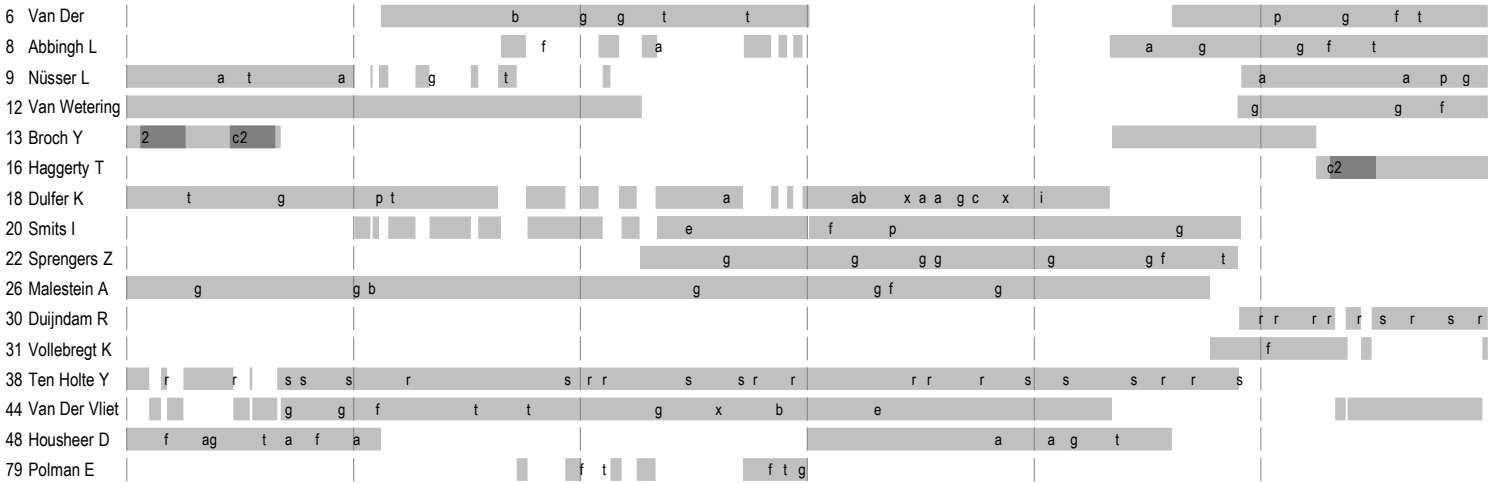
Attendance: 1314

Arena Nord

Referees: Mads Hansen (DEN) / Jesper Madsen (DEN)



Netherlands



Spain



| | | | | | |
|--------------------------|----------------------|--------------------------|--------------------------------|---------------------------|------------------------|
| In game | g Goal scored | f Missed shot | a Assist | t Technical faults | b Steal |
| 2 2min suspension | e Earned 7m | c Committed 7m | y Yellow card | r Red Card | k Blue card |
| i Earned 2min. | x Block | 4 4min suspension | p Pass for clear chance | s Saved shot | r Received goal |