



26th IHF Women's World Championship

Denmark • Norway • Sweden

Main Round III, 2. round



Match Team Statistics

Match No. 78

Romania 32 - 28 Japan

(17 - 14) (15 - 14)

9.12.2023. 15:30

Attendance: 3502

Jyske Bank Boxen

Referees: Mariana Garcia (ARG) / Maria Ines Paolantoni (ARG)

Shot distribution by player

Player	Goals	Assists	Penalties	7m	Fastbreak	Breakthrough	Long dist.
2 E. Dinca	0	0	0	0	0	0	0
4 M. Pascan	0	0	0	0	0	0	0
7 E. Buceschi	0/1	3/3	2/2	2/2	0/1	4/4	1/1 lob
13 C. Laslo	0/1	2/2	1/1	0/1			1 post 1 miss.
14 B. Bazaliu		1/1		0/1	1/1		1 post
18 D. Bucur			1/1				
21 A. Dindiligan		1/2	0/1	1/1			
22 A. Badea							
27 L. Ostase	0/1	1/1		1/1	1/1		1 miss.
28 M. Lixandriou							
30 S. Seraficeanu	1/2	0/1		2/2			
33 N. Balog							
70 A. Popa	1/1			1/1			1 post
77 C. Pintea				1/1		2/2	

TOTAL

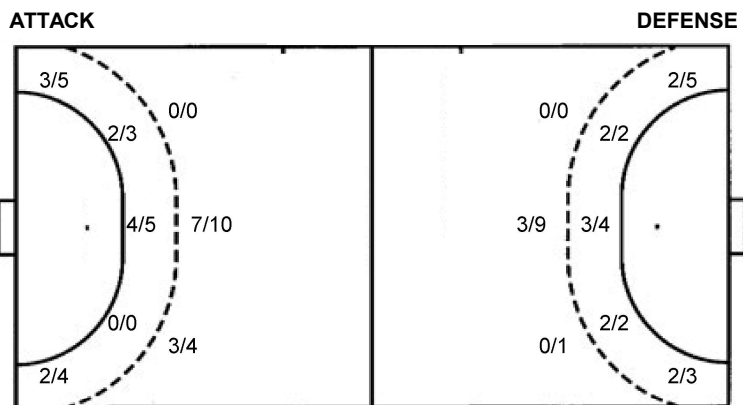
2/5	0/2	8/9
1/1		3/5
8/9	2/3	7/7

3 post 2 miss. 1/1 lob

Saves distribution goalkeepers

Player	Goals	Assists	Penalties	7m	Fastbreak	Breakthrough	Long dist.
12 D. Ciuca	2/3	0/1	0/2	1/1	0/5	1/2	0/4
98 D. Hosu	0/2	0/1	0/2	0/1	0/2	1/1	1/4
TOTAL	2/5	0/2	0/4	1/1	0/7	2/3	1/8

Shots by position



7m penalties 3/4
Fastbreak 0/0
Breakthrough 6/8
Long dist. 2/4

7m penalties 2/2
Fastbreak 7/7
Breakthrough 5/8
Long dist. 0/0

Shooting statistics

Position	Goals	Sav.	Miss.	Post	Blk.	Total	%
Back (9m)	10	3	0	1	0	14	71
Line (6m)	6	1	0	1	0	8	75
Wing	5	4	0	0	0	9	56
7m penalties	3	0	0	1	0	4	75
Fastbreak	0	0	0	0	0	0	0
Breakthrough	6	2	0	0	0	8	75
Total	30	10	0	3	0	43	70

Jersey number Tot. Total shooting 6m 6m (line) shooting 9m 9m shooting Wng Wing shooting FB Fastbreak sh. 7m 7m penalty sh.
Brk. Breakthrough sh. LD Long distance sh. As. Assists PC Pass clear chance E7 Earned 7m pen. TF Technical faults St. Steals
2m 2m punishments C7. Committed 7m E2 Earned 2m pun. YC. Yellow cards R/B Red/Blue cards Blk. Blocks S Starting Line-up

Handball statistics and livescore by Toma-soft ltd (www.toma-soft.hr)



26th IHF Women's World Championship

Denmark • Norway • Sweden

Main Round III, 2. round



Match Team Statistics

Match No. 78

Romania 32 - 28 Japan

(17 - 14) (15 - 14)

9.12.2023. 15:30

Attendance: 3502

Jyske Bank Boxen

Referees: Mariana Garcia (ARG) / Maria Ines Paolantoni (ARG)

Shot distribution by player

2 M. Nagata

3 N. Sahara

4 M. Hatsumi

6 Y. Kitahara

7 S. Hattori

		2/2
1/1		1/1

1 miss. 1/1 lob

9 C. Kasai

1/1		
2/2	1/1	

13 K. Nakayama

1/2		
		3/4

1 post 1 miss.

18 H. Matsumoto

1 post 1 miss.

20 N. Akiyama

		1/1

23 N. Aizawa

0/1		
2/2		
2/2	0/1	1/1

1 miss.

24 A. Okada

1/1		
1/1		

32 H. Sasaki

	0/1	
1/1	0/1	1/1

2 miss.

51 Y. Yoshidome

1/1		1/1

2/3 lob

89 S. Ishikawa

1/1		

TOTAL

3/5		2/2
4/4	0/1	1/1
7/7	1/3	7/8

2 post 6 miss. 3/4 lob

Saves distribution goalkeepers

1 S. Kametani

1/1		0/4
		0/1
0/2		0/1

22 N. Saito

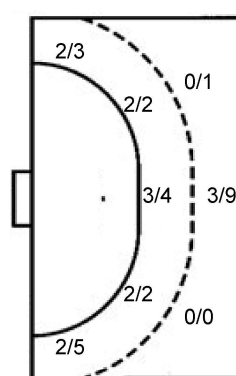
2/4	2/2	1/5
0/1		2/4
1/7	1/1	0/6

TOTAL

3/5	2/2	1/9
0/1		2/5
1/9	1/1	0/7

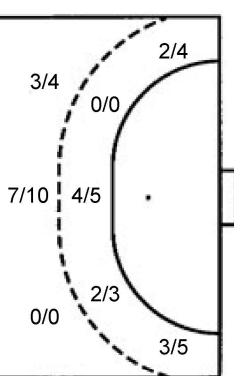
Shots by position

ATTACK



7m penalties 2/2
Fastbreak 7/7
Breakthrough 5/8
Long dist. 0/0

DEFENSE



7m penalties 3/4
Fastbreak 0/0
Breakthrough 6/8
Long dist. 2/4

Shooting statistics

Position	Goals	Sav.	Miss.	Post	Blk.	Total	%
Back (9m)	3	3	4	0	0	10	30
Line (6m)	7	0	0	1	0	8	88
Wing	4	1	2	1	0	8	50
7m penalties	2	0	0	0	0	2	100
Fastbreak	7	0	0	0	0	7	100
Breakthrough	5	3	0	0	0	8	63
Total	28	7	6	2	0	43	65

Jersey number Tot. Total shooting 6m 6m (line) shooting 9m 9m shooting Wng Wing shooting FB Fastbreak sh. 7m 7m penalty sh.
Brk. Breakthrough sh. LD Long distance sh. As. Assists PC Pass clear chance E7 Earned 7m pen. TF Technical faults St. Steals
2m 2m punishments C7. Committed 7m E2 Earned 2m pun. YC. Yellow cards R/B Red/Blue cards Blk. Blocks S Starting Line-up

Handball statistics and livescore by Toma-soft ltd (www.toma-soft.hr)

