





# 26th IHF Women's World Championship

Denmark • Norway • Sweden

President's Cup II, 2. round



## Match Team Statistics

Match No. 74

## Iran 20 - 32 Congo

(9 - 19) (11 - 13)

9.12.2023. 15:30

Attendance: 174

Arena Nord

Referees: Kristof Altmar (HUN) / Marton Horvath (HUN)

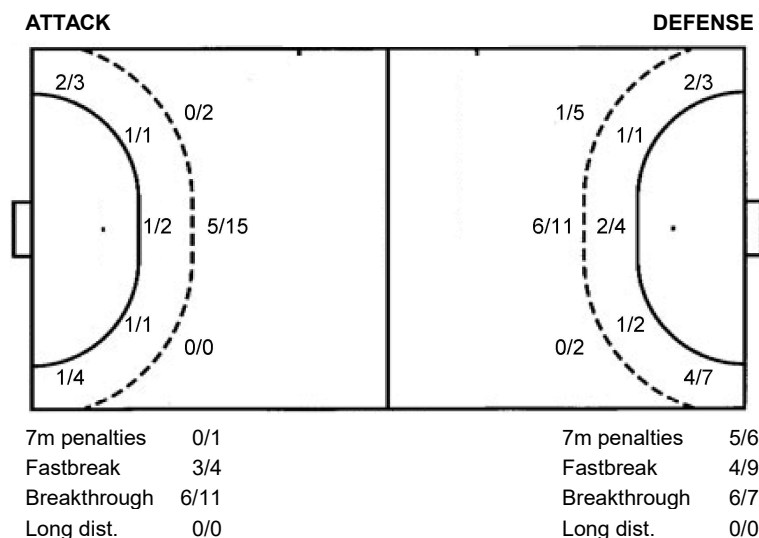
## Shot distribution by player

<b>2 A. Zandi</b> [ ] [ ] [ ] [ ] [ ] [ ] [ ] [ ] [ ]	<b>4 F. Merikh</b> [ ] [ ] [ ] [ ] [ ] [ ] 2/3 [ ] [ ] 2 post	<b>9 S. Rahmanian</b> 0/1 [ ] [ ] [ ] [ ] [ ] 0/1 [ ] [ ] 1/1 1 post 2 miss. 1/1 lob	<b>10 A. Shahsavari</b> [ ] [ ] [ ] [ ] [ ] [ ] [ ] [ ] [ ] 1/1	<b>11 M. Badvi</b> [ ] [ ] [ ] [ ] [ ] [ ] 1/1 0/1 1/1 1 miss. 2 block	<b>17 M. Vatan Parast Tootoonsiz</b> [ ] [ ] [ ] [ ] [ ] [ ] [ ] [ ] [ ]	<b>20 B. Eizadgashb</b> [ ] [ ] [ ] [ ] [ ] [ ] 0/1 [ ] [ ]
<b>24 H. Norouzi Khorzoughi</b> [ ] [ ] [ ] [ ] [ ] [ ] [ ] [ ] [ ] 0/1 [ ] [ ] [ ] 1/1 2 miss. 1/1 lob	<b>27 A. Kiyaniara</b> [ ] [ ] [ ] 1/1 [ ] [ ] 0/1 1/1 [ ] [ ] 1 post 1 miss.	<b>37 Z. Faghihi</b> 1/1 [ ] [ ] [ ] [ ] [ ] [ ] [ ] [ ] 1/1 1 post 1/1 lob	<b>76 N. Koudzarifarahani</b> [ ] [ ] [ ] [ ] [ ] [ ] [ ] [ ] [ ] 1/1 1 post 1 block	<b>88 M. Oshaghi</b> [ ] [ ] [ ] [ ] [ ] [ ] 1/1 [ ] [ ]	<b>96 S. Rajabi</b> [ ] [ ] [ ] [ ] [ ] [ ] [ ] [ ] [ ]	<b>TOTAL</b> 1/2 [ ] [ ] 1/1 0/1 2/5 5/8 0/1 8/8 6 post 6 miss. 3 block 3/3 lob

## Saves distribution goalkeepers

<b>12 F. Khalili Behfar</b> 3/8 3/4 3/8 2/4 [ ] 0/3 1/8 1/2 1/6	<b>22 H. Lak</b> [ ] [ ] [ ] [ ] [ ] [ ] [ ] [ ] [ ] 0/1	<b>33 A. Mohammadi Ologhi</b> [ ] [ ] [ ] [ ] [ ] [ ] 0/1 [ ] [ ]	<b>TOTAL</b> 3/8 3/4 3/8 2/4 [ ] 0/4 1/9 1/2 1/6
--	---	--	---

## Shots by position



## Shooting statistics

Position	Goals	Sav.	Miss.	Post	Blk.	Total	%
Back (9m)	5	4	3	2	3	17	29
Line (6m)	3	0	0	1	0	4	75
Wing	3	1	3	0	0	7	43
7m penalties	0	1	0	0	0	1	0
Fastbreak	3	1	0	0	0	4	75
Breakthrough	6	2	0	3	0	11	55
<b>Total</b>	<b>20</b>	<b>9</b>	<b>6</b>	<b>6</b>	<b>3</b>	<b>44</b>	<b>45</b>

# Jersey number Tot. Total shooting 6m 6m (line) shooting 9m 9m shooting Wng Wing shooting FB Fastbreak sh. 7m 7m penalty sh.  
 Brk. Breakthrough sh. LD Long distance sh. As. Assists PC Pass clear chance E7 Earned 7m pen. TF Technical faults St. Steals  
 2m 2m punishments C7. Committed 7m E2 Earned 2m pun. YC. Yellow cards R/B Red/Blue cards Blk. Blocks S Starting Line-up



# 26th IHF Women's World Championship

Denmark • Norway • Sweden

President's Cup II, 2. round



Match Team Statistics

Match No. 74

## Iran 20 - 32 Congo

(9 - 19) (11 - 13)

9.12.2023. 15:30

Attendance: 174

Arena Nord

Referees: Kristof Altmar (HUN) / Marton Horvath (HUN)

### Congo

#	Surname and name	S	Goals / shots								Attack				Def.			Penalties			TP			
			Tot.	%	9m	6m	Wing	7m	FB	Brk.	LD	As.	PC	E7	E2	TF	St.	C7	Blk	YC		2m	R	B
1	KODIA Ruth	S										1												46:08
2	OLIKAKA Jonedie Balotnelle		1/1	100		1/1										4								14:54
5	RUTIL Kimberley Lisa Melissa	S	3/3	100	1/1	1/1				1/1		2	1			2								15:37
7	NGUEKWIAN YIMGA Diane Gaelle	S	1/6	17	1/5			0/1				1	1	1				1		1				35:57
8	MOUELE MISSAMOU Ruptia Chrishna		0/1	0				0/1								1								8:03
10	HENDO Mercianne													1		1								16:19
11	MONGO MAKOUALA Hermida Chanaelle		3/5	60		3/4		0/1								2								35:38
13	ZOUBABELA Grace		1/3	33		1/3									1									18:48
15	DOMINGOS Eugenia Ventura		6/7	86	2/3			3/3		1/1		2				1								21:05
20	NTESSI Alicia Louise																							11:37
23	NGOMBELE Betchaidelle		3/6	50	2/5					1/1					1	1		2						26:17
45	NKOU Josephine Line Maxime	S	1/5	20	0/1			1/1	0/3			2		1	1		3			1				34:05
61	SARAIVA Rita Luana	S	3/5	60		2/4			1/1							1	1			1				40:02
66	MAMBOU Suzanne Bellette	S	5/7	71		0/1	2/3		3/3							1	1							34:34
78	DIAGOURAGA Fanta	S	2/4	50	1/3			1/1				3	1	1	1		2							31:11
99	JAPPONT Kassandra		3/4	75						3/4		1	1	1		1					1			29:45
	Team / bench																							
	UKUPNO		32/57	56	7/18	4/7	6/10	5/6	4/9	6/7	0/0	12	4	6	2	14	8	1	3	0	4	0	0	

#	Surname and name	Saves / shots								
		Tot.	%	9m	6m	Wing	7m	FB	Brk.	LD
1	KODIA Ruth	7/25	28	3/7	0/2	1/4		1/4	2/8	
20	NTESSI Alicia Louise	2/4	50	1/2	0/1		1/1			
	TOTAL	9/29	31	4/9	0/3	1/4	1/1	4/4	2/8	0/0

Coach: Younes Tatby

Number of attacks: 69, Efficiency: 46%, Average Duration: 24.62 seconds

### Attack by type of defense

	Shots	9m	6m	Wing	TF	E7	E2
On def. 6-0	2/3	2/3	0/0	0/0	2	1	0
On def. 5-1	17/32	5/15	3/5	5/7	11	4	1
On def. 4-2	4/6	0/0	1/2	1/2	0	1	1
On def. 3-3	0/0	0/0	0/0	0/0	1	0	0
Fastbreak	4/9				0	0	0

### Defense by type

	Total	9m	6m	Wing	Stl.	C7	2m
Def. 6-0	7/17	2/6	2/3	1/2	1	0	0
Def. 5-1	10/21	3/11	1/1	2/4	7	1	0
Def. 3-2-1	0/1	0/0	0/0	0/1	0	0	0
Fastbreak	3/4				0	0	4

### Attack with superiority / minority / goalkeeper out

	Attack				Reaction		
	Att.	Eff.	Shots	TF	FB	LD	Tot.
7 on 6 (GK out)	1	100%	1/1	0	0/0	0/0	0/0
6 on 6 (GK out)	1	0%	0/0	1	0/0	0/0	0/0
5 on 6 (GK out)	2	0%	0/2	0	0/0	0/0	0/0
6 on 6	57	47%	27/45	12			
5 on 6	2	0%	0/1	1			
6 on 5 (GK out)	2	50%	1/2	0	0/0	0/0	0/0
6 on 5	4	75%	3/4	0			

Player superiority / GK out counted at the end of attack (in case it changes during attack)

### Defense with superiority / minority / goalkeeper out

	Attack				Reaction		
	Att.	Eff.	Shots	TF	FB	LD	Tot.
6 on 6	56	29%	16/32	24			
6 on 5	6	33%	2/5	1			
6 on 4	2	50%	1/1	1			
5 on 6	3	33%	1/1	2			
5 on 5	1	0%	0/0	1			

Numbers show attacking numbers of opponent. Lower efficiency of opponent means better defense of this team

# Jersey number Tot. Total shooting 6m 6m (line) shooting 9m 9m shooting Wng Wing shooting FB Fastbreak sh. 7m 7m penalty sh.  
 Brk. Breakthrough sh. LD Long distance sh. As. Assists PC Pass clear chance E7 Earned 7m pen. TF Technical faults St. Steals  
 2m 2m punishments C7. Committed 7m E2 Earned 2m pun. YC. Yellow cards R/B Red/Blue cards Blk. Blocks S Starting Line-up

Handball statistics and livescore by Toma-soft ltd (www.toma-soft.hr)



# 26th IHF Women's World Championship

Denmark • Norway • Sweden

President's Cup II, 2. round



## Match Team Statistics

Match No. 74

## Iran 20 - 32 Congo

(9 - 19) (11 - 13)

9.12.2023. 15:30

Attendance: 174

Arena Nord

Referees: Kristof Altmar (HUN) / Marton Horvath (HUN)

### Shot distribution by player

#### 2 J. Olikaka

		1/1

#### 5 K. Rutil

1/1		
1/1		1/1

#### 7 D. Nguekwian Yimga

0/1	0/2	0/1
		1/1

1 block

#### 8 R. Mouele Missamou

		0/1

#### 10 M. Hendo


#### 11 H. Mongo Makouala

0/1	1/1	
0/1		
1/1	1/1	

#### 13 G. Zoubabela

1/1		
	0/1	

1 miss.

#### 15 E. Domingos

1/1		2/2
1/1		1/1

1 post 1/1 lob

#### 23 B. Ngombele

		1/1
1/1		1/1

3 miss.

#### 45 J. Nkou

	0/1	
1/1		

2 post 1 miss.

#### 61 R. Saraiva

1/1		0/1
		1/1
1/2		

#### 66 S. Mambou

2/2		1/1
1/2		
1/1		

1 post

#### 78 F. Diagouraga

		1/1
		1/1
		0/1

1 post

#### 99 K. Jappont

0/1		1/1
1/1		1/1

### TOTAL

5/8	1/4	5/8
2/4		4/4
8/9	1/2	5/6

5 post 5 miss. 1 block 1/1 lob

### Saves distribution goalkeepers

#### 1 R. Kodia

1/2		
0/1	1/1	2/4
2/6	1/1	0/8

#### 20 A. Ntessi

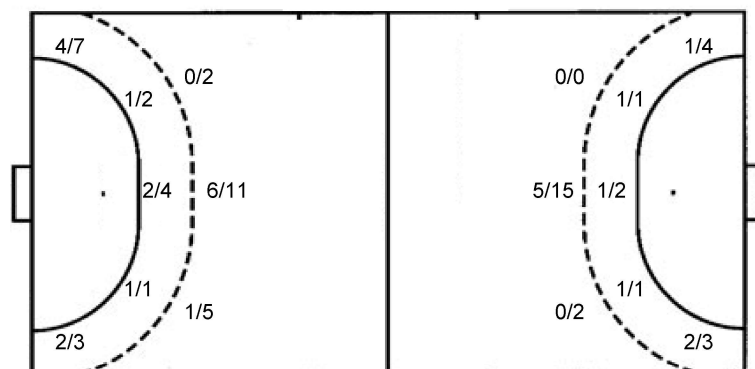
		1/1
1/2		

### TOTAL

1/2		
0/1	1/1	3/5
3/8	1/1	0/8

### Shots by position

#### ATTACK



7m penalties 5/6  
Fastbreak 4/9  
Breakthrough 6/7  
Long dist. 0/0

#### DEFENSE

7m penalties 0/1  
Fastbreak 3/4  
Breakthrough 6/11  
Long dist. 0/0

### Shooting statistics

Position	Goals	Sav.	Miss.	Post	Blk.	Total	%
Back (9m)	7	4	4	2	1	18	39
Line (6m)	4	2	0	1	0	7	57
Wing	6	3	1	0	0	10	60
7m penalties	5	1	0	0	0	6	83
Fastbreak	4	3	0	2	0	9	44
Breakthrough	6	1	0	0	0	7	86
<b>Total</b>	<b>32</b>	<b>14</b>	<b>5</b>	<b>5</b>	<b>1</b>	<b>57</b>	<b>56</b>

# Jersey number Tot. Total shooting 6m 6m (line) shooting 9m 9m shooting Wng Wing shooting FB Fastbreak sh. 7m 7m penalty sh.  
Brk. Breakthrough sh. LD Long distance sh. As. Assists PC Pass clear chance E7 Earned 7m pen. TF Technical faults St. Steals  
2m 2m punishments C7. Committed 7m E2 Earned 2m pun. YC. Yellow cards R/B Red/Blue cards Blk. Blocks S Starting Line-up

Handball statistics and livescore by Toma-soft ltd (www.toma-soft.hr)

