



## 26th IHF Women's World Championship

Denmark • Norway • Sweden

President's Cup I, 2. round



Match Team Statistics

Match No. 71

### P.R. of China 32 - 24 Greenland

(17 - 8) (15 - 16)

9.12.2023. 20:30

Attendance: 455

Arena Nord

Referees: Heidy Elsaied (EGY) / Yasmina Elsaied (EGY)

#### P.R. of China

Players		Goals / shots									Attack					Def.			Penalties				TP		
#	Surname and name	S	Tot.	%	9m	6m	Wing	7m	FB	Brk.	LD	As.	PC	E7	E2	TF	St.	C7	Blk	YC	2m	R		B	
1	LU Chang	S																							39:59
5	WANG Jiayi																								
9	JIANG Yishan		1/1	100		1/1																		1	5:28
11	LIU Chan	S	7/9	78	5/7					2/2		2	1	2	1	4	1								52:17
12	LI Xiaoqing	S	6/10	60	2/5			2/2		2/3		1							1						45:43
13	ZHAO Xinyao		2/3	67			1/2				1/1								1					1	25:34
14	ZHOU Mengxue		1/3	33	0/1					1/2		1			1										10:52
17	HU Yunuo																								18:33
18	WEI Nana																								
21	ZHANG Guisi																								20:04
22	MA Jie		1/1	100			1/1																		9:56
23	ZHUANG Hongyan	S	5/6	83			3/4		1/1		1/1			2	1	1									47:45
27	GONG Lei	S	3/4	75		3/3					0/1	1		1	1				2						42:54
28	LIU Xuedan		1/2	50	0/1					1/1		1													14:46
34	JIN Mengqing	S	3/4	75	1/1			2/3				5	2			6									51:04
53	LIU Yuting	S	2/3	67			2/3																1		35:05
	Team / bench																								
	UKUPNO		32/46	70	8/15	4/4	7/10	4/5	1/1	6/8	2/3	11	3	5	3	12	1	2	2	0	3	0	0		

Goalkeepers		Saves / shots								
#	Surname and name	Tot.	%	9m	6m	Wing	7m	FB	Brk.	LD
1	LU Chang	5/18	28	2/5	0/3	2/4		0/2	0/3	1/1
17	HU Yunuo	4/15	27	3/7	1/3		0/2	0/2	0/1	
	TOTAL	9/33	27	5/12	1/6	2/4	0/2	0/4	0/4	1/1

Coach: Yongli Zheng

Number of attacks: 55, Efficiency: 58%, Average Duration: 26.53 seconds

#### Attack by type of defense

	Shots	9m	6m	Wing	TF	E7	E2
On def. 6-0	15/23	3/8	2/2	5/6	9	4	3
On def. 5-1	10/14	5/7	2/2	2/4	3	1	0
Fastbreak	1/1				0	0	0

#### Defense by type

	Total	9m	6m	Wing	Stl.	C7	2m
Def. 6-0	11/25	1/9	4/6	2/6	0	2	0
Def. 5-1	7/12	6/8	1/2	0/2	1	0	0
Fastbreak	4/4				0	0	3

#### Attack with superiority / minority / goalkeeper out

	Attack				Reaction		
	Att.	Eff.	Shots	TF	FB	LD	Tot.
6 on 6 (GK out)	1	0%	0/0	1	1/1	0/0	1/1
6 on 5 (GK out)	1	100%	1/1	0	0/0	0/0	0/0
6 on 6	44	52%	23/33	11			
6 on 5	8	88%	7/8	0			
5 on 6	1	100%	1/1	0			

Player superiority / GK out counted at the end of attack (in case it changes during attack)

#### Defense with superiority / minority / goalkeeper out

	Attack				Reaction		
	Att.	Eff.	Shots	TF	FB	LD	Tot.
7 on 6 (GK out)	17	29%	5/11	6	0/0	1/2	1/2
6 on 6 (GK out)	4	50%	2/3	1	0/0	1/1	1/1
6 on 6	28	50%	14/23	5			
6 on 5 (GK out)	1	0%	0/1	0	0/0	0/0	0/0
6 on 5	5	60%	3/5	0			

Numbers show attacking numbers of opponent. Lower efficiency of opponent means better defense of this team

# Jersey number Tot. Total shooting 6m 6m (line) shooting 9m 9m shooting Wng Wing shooting FB Fastbreak sh. 7m 7m penalty sh.  
 Brk. Breakthrough sh. LD Long distance sh. As. Assists PC Pass clear chance E7 Earned 7m pen. TF Technical faults St. Steals  
 2m 2m punishments C7 Committed 7m E2 Earned 2m pun. YC. Yellow cards R/B Red/Blue cards Blk. Blocks S Starting Line-up

Handball statistics and livescore by Toma-soft ltd (www.toma-soft.hr)



# 26th IHF Women's World Championship

Denmark • Norway • Sweden

President's Cup I, 2. round



## Match Team Statistics

Match No. 71

## P.R. of China 32 - 24 Greenland

(17 - 8) (15 - 16)

9.12.2023. 20:30

Attendance: 455

Arena Nord

Referees: Heidy Elsaied (EGY) / Yasmina Elsaied (EGY)

### Shot distribution by player

<b>5 J. Wang</b>	<b>9 Y. Jiang</b>	<b>11 C. Liu</b>	<b>12 X. Li</b>	<b>13 X. Zhao</b>	<b>14 M. Zhou</b>	<b>18 N. Wei</b>
		3/3				
		1/1	1/1			
	1/1	1/1	1/1	1/1		
		1 post 1 block	1 post 1 miss. 1 block	1 post	1 miss.	
<b>21 G. Zhang</b>	<b>22 J. Ma</b>	<b>23 H. Zhuang</b>	<b>27 L. Gong</b>	<b>28 X. Liu</b>	<b>34 M. Jin</b>	<b>53 Y. Liu</b>
	1/1	2/2	2/2		1/1	1/1
		1/1	1/1	0/1	1/1	1/2
		1 post 1/1 lob	1 post	1/1 lob	1/1	1/1 lob

### TOTAL

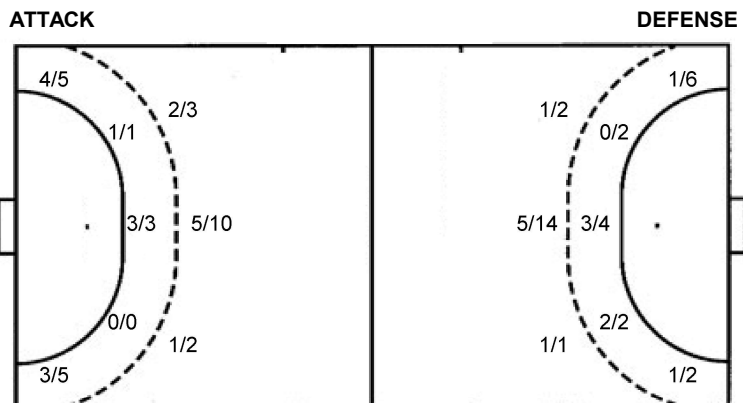
9/9		4/5
1/1	2/2	
7/8	2/3	4/6

5 post 2 miss. 2 block 3/3 lob

### Saves distribution goalkeepers

<b>1 C. Lu</b>	<b>17 Y. Hu</b>	<b>TOTAL</b>
	0/2	0/2
0/1	3/4	0/1
1/7	0/1	1/3
	1/2	1/3
	2/2	0/1
	1/3	5/6
	0/5	2/10
		0/1
		1/8

### Shots by position



7m penalties	4/5	7m penalties	2/2
Fastbreak	1/1	Fastbreak	4/4
Breakthrough	6/8	Breakthrough	4/4
Long dist.	2/3	Long dist.	0/1

### Shooting statistics

Position	Goals	Sav.	Miss.	Post	Blk.	Total	%
Back (9m)	8	2	1	2	2	15	53
Line (6m)	4	0	0	0	0	4	100
Wing	7	1	0	2	0	10	70
7m penalties	4	1	0	0	0	5	80
Fastbreak	1	0	0	0	0	1	100
Breakthrough	6	1	1	0	0	8	75
<b>Total</b>	<b>30</b>	<b>5</b>	<b>2</b>	<b>4</b>	<b>2</b>	<b>43</b>	<b>70</b>

# Jersey number Tot. Total shooting 6m 6m (line) shooting 9m 9m shooting Wng Wing shooting FB Fastbreak sh. 7m 7m penalty sh.  
 Brk. Breakthrough sh. LD Long distance sh. As. Assists PC Pass clear chance E7 Earned 7m pen. TF Technical faults St. Steals  
 2m 2m punishments C7. Committed 7m E2 Earned 2m pun. YC. Yellow cards R/B Red/Blue cards Blk. Blocks S Starting Line-up



# 26th IHF Women's World Championship

Denmark • Norway • Sweden

President's Cup I, 2. round



Match Team Statistics

Match No. 71

## P.R. of China 32 - 24 Greenland

(17 - 8) (15 - 16)

9.12.2023. 20:30

Attendance: 455

Arena Nord

Referees: Heidy Elsaied (EGY) / Yasmina Elsaied (EGY)

### Greenland

#	Surname and name	S	Goals / shots								Attack				Def.			Penalties				TP						
			Tot.	%	9m	6m	Wing	7m	FB	Brk.	LD	As.	PC	E7	E2	TF	St.	C7	Blk	YC	2m		R	B				
2	LUKASSEN Nuunu		1/2	50			1/2																					28:22
3	HEILMANN Andrea Marie Bertia Karina	S	1/3	33	0/1			1/2								2	1	1	1									27:02
4	HEILMANN Anja Labansen		1/1	100				1/1							1	1			3									27:52
7	KAJANGMAT Aviana Vilhelmine Jorna		2/5	40				0/3												1								28:07
8	FREDERIKSEN Ane-Sofiannnguaq Petrine	S																										19:48
10	GADGAARD Josefine Jakobsgaard		1/2	50	1/2										1	1					1							33:37
12	FLY Nivi Satorana Amalie	S																										20:31
13	BJERGE Ivalu Cecilie		3/5	60	0/2										3/3													31:32
14	PETERSEN Nivi Jensen	S	4/4	100	4/4										1	1												32:46
15	ROTHBERG Sandra	S	0/2	0		0/2																						24:26
17	HANSEN Lykke Catrine Frank		2/7	29	2/7										1													16:48
18	HEILMANN Aviaaja																											26:12
19	LYBERTH Nukaaka		3/4	75		1/2																						19:01
21	PEDERSEN Aili Paneeraq	S	1/2	50	0/1																							22:30
26	HOLM Ivaana Augusta Ottosen	S	4/5	80		4/4									0/1	1												42:26
79	ZEEB Sascha Ane Jordening		1/2	50				0/1	1/1																			19:00
	Team / bench																											
	UKUPNO		24/44	55	7/17	5/8	2/8	2/2	4/4	4/4	0/1	10	9	2	3	12	8	5	2	0	4	0	0					

#	Surname and name	Saves / shots								
		Tot.	%	9m	6m	Wing	7m	FB	Brk.	LD
12	FLY Nivi Satorana Amalie	2/17	12	2/4	0/2	0/4	0/2	0/1	0/4	
18	HEILMANN Aviaaja	3/18	17	0/6	0/2	1/4	1/3		1/3	
	TOTAL	5/35	14	2/10	0/4	1/8	1/5	0/1	1/7	0/0

Coach: **Anders Friis**

Number of attacks: 55, Efficiency: 44%, Average Duration: 38.85 seconds

### Attack by type of defense

	Shots	9m	6m	Wing	TF	E7	E2
On def. 6-0	11/25	1/9	4/6	2/6	9	2	2
On def. 5-1	7/12	6/8	1/2	0/2	3	0	1
Fastbreak	4/4				0	0	0

### Defense by type

	Total	9m	6m	Wing	Stl.	C7	2m
Def. 6-0	15/23	3/8	2/2	5/6	7	4	0
Def. 5-1	10/14	5/7	2/2	2/4	1	1	0
Fastbreak	1/1				0	0	4

### Attack with superiority / minority / goalkeeper out

	Attack				Reaction		
	Att.	Eff.	Shots	TF	FB	LD	Tot.
7 on 6 (GK out)	17	29%	5/11	6	0/0	1/2	1/2
6 on 6 (GK out)	4	50%	2/3	1	0/0	1/1	1/1
6 on 6	28	50%	14/23	5			
6 on 5 (GK out)	1	0%	0/1	0	0/0	0/0	0/0
6 on 5	5	60%	3/5	0			

Player superiority / GK out counted at the end of attack (in case it changes during attack)

### Defense with superiority / minority / goalkeeper out

	Attack				Reaction		
	Att.	Eff.	Shots	TF	FB	LD	Tot.
6 on 6 (GK out)	1	0%	0/0	1	1/1	0/0	1/1
6 on 5 (GK out)	1	100%	1/1	0	0/0	0/0	0/0
6 on 6	44	52%	23/33	11			
6 on 5	8	88%	7/8	0			
5 on 6	1	100%	1/1	0			

Numbers show attacking numbers of opponent. Lower efficiency of opponent means better defense of this team

# Jersey number Tot. Total shooting 6m 6m (line) shooting 9m 9m shooting Wng Wing shooting FB Fastbreak sh. 7m 7m penalty sh.  
 Brk. Breakthrough sh. LD Long distance sh. As. Assists PC Pass clear chance E7 Earned 7m pen. TF Technical faults St. Steals  
 2m 2m punishments C7. Committed 7m E2 Earned 2m pun. YC. Yellow cards R/B Red/Blue cards Blk. Blocks S Starting Line-up



# 26th IHF Women's World Championship

Denmark • Norway • Sweden

President's Cup I, 2. round



## Match Team Statistics

Match No. 71

## P.R. of China 32 - 24 Greenland

(17 - 8) (15 - 16)

9.12.2023. 20:30

Attendance: 455

Arena Nord

Referees: Heidy Elsaied (EGY) / Yasmina Elsaied (EGY)

### Shot distribution by player

#### 2 N. Lukassen

1/1		

1 post

#### 3 A. Heilmann

0/2		

1/1 lob

#### 4 A. Heilmann

		1/1

#### 7 A. Kajangmat

		1/1
	0/1	
1/1		

1 post 1 miss.

#### 8 A. Frederiksen


#### 10 J. Gadgaard

		0/1
1/1		

#### 13 I. Bjerge

	1/1	2/2

1 miss. 1 block

#### 14 N. Petersen

1/1		
1/1		
1/1		1/1

#### 15 S. Rothberg

	0/1	

1 miss.

#### 17 L. Hansen

1/1		
	0/2	
1/1		0/1

1 post 1 block

#### 19 N. Lyberth

	1/1	
1/1		1/1

1 miss.

#### 21 A. Pedersen

1/1		

1 miss.

#### 26 I. Holm

	0/1	
1/1		2/2

1/1 lob

#### 79 S. Zeeb

		1/1

1 post

### TOTAL

2/2		2/3
1/1	1/6	
8/10	1/1	7/8

4 post 5 miss. 2 block 2/2 lob

### Saves distribution goalkeepers

#### 12 N. Fly

0/4		0/1
0/1		
1/4	0/1	1/3

#### 18 A. Heilmann

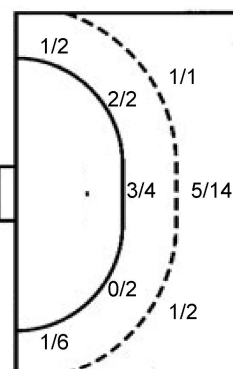
0/5		1/4
	0/1	
0/3	1/2	1/3

### TOTAL

0/9		1/5
0/1	0/1	
1/7	1/3	2/6

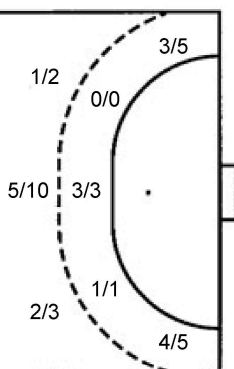
### Shots by position

#### ATTACK



7m penalties 2/2  
Fastbreak 4/4  
Breakthrough 4/4  
Long dist. 0/1

#### DEFENSE



7m penalties 4/5  
Fastbreak 1/1  
Breakthrough 6/8  
Long dist. 2/3

### Shooting statistics

Position	Goals	Sav.	Miss.	Post	Blk.	Total	%
Back (9m)	7	5	2	1	2	17	41
Line (6m)	5	1	2	0	0	8	63
Wing	2	2	1	3	0	8	25
7m penalties	2	0	0	0	0	2	100
Fastbreak	4	0	0	0	0	4	100
Breakthrough	4	0	0	0	0	4	100
<b>Total</b>	<b>24</b>	<b>8</b>	<b>5</b>	<b>4</b>	<b>2</b>	<b>43</b>	<b>56</b>

# Jersey number Tot. Total shooting 6m 6m (line) shooting 9m 9m shooting Wng Wing shooting FB Fastbreak sh. 7m 7m penalty sh.  
Brk. Breakthrough sh. LD Long distance sh. As. Assists PC Pass clear chance E7 Earned 7m pen. TF Technical faults St. Steals  
2m 2m punishments C7. Committed 7m E2 Earned 2m pun. YC. Yellow cards R/B Red/Blue cards Blk. Blocks S Starting Line-up

Handball statistics and livescore by Toma-soft ltd (www.toma-soft.hr)



# 26th IHF Women's World Championship

Denmark • Norway • Sweden

President's Cup I, 2. round



## Match Team Statistics

Match No. 71

## P.R. of China 32 - 24 Greenland

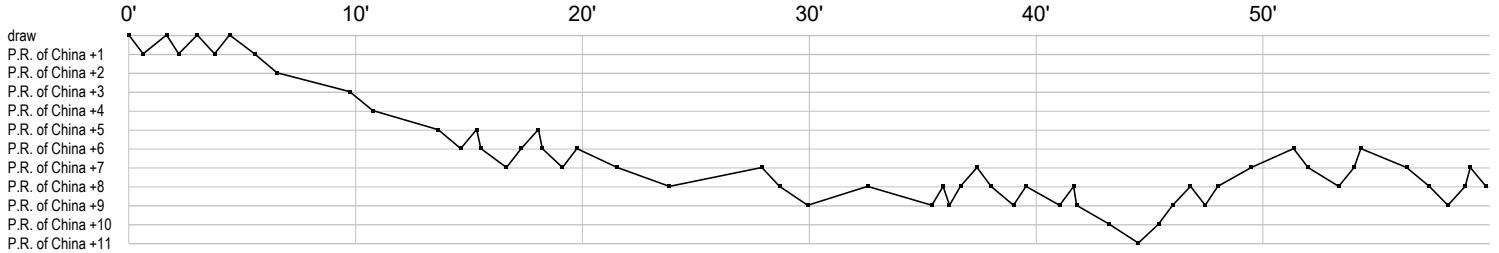
(17 - 8) (15 - 16)

9.12.2023. 20:30

Attendance: 455

Arena Nord

Referees: Heidy Elsaied (EGY) / Yasmina Elsaied (EGY)



### P.R. of China

1 Lu C	r r r s s r r r r s s r s	r r r r r
5 Wang J		
9 Jiang Y		g 2
11 Liu C	g fg p t a g g f t g e t g t a g ei b	
12 Li X	f g f f g c a g g	g
13 Zhao X	g c2 f	g
14 Zhou M	g a t	f f
17 Hu Y	s r s r r r s r r s r r r r r	
18 Wei N		
21 Zhang G		
22 Ma J		g
23 Zhuang H	ie g f g g g e t g	
27 Gong L	x f x	g g ie a
28 Liu X		f a g
34 Jin M	g a a a t g p f g p a a t	t t t t
53 Liu Y	g g f2	

### Greenland

2 Lukassen N	g b f	t
3 Heilmann A	g f	f ei t p
4 Heilmann A	t	t a p g
7 Kajangmat A	f f	g f bg
8 Frederiksen A		
10 Gadgaard J	g p c	f i a
12 Fly N	r r r r r r r r	r r s s r r r r
13 Bjerge I	g a f p p p t a a g t f	c a p g ba
14 Petersen N		g g a g p g
15 Rothberg S	x f b t	f c2 g g f a
17 Hansen L	t f f f	f c2 g g f a
18 Heilmann A	r r r r s r r r s s r r r r r r	
19 Lyberth N	g	g t bi f
21 Pedersen A	2c	g b
26 Holm I	t g gx f e g ba g	
79 Zeeb S		g f

In game	<b>g</b> Goal scored	<b>f</b> Missed shot	<b>a</b> Assist	<b>t</b> Technical faults	<b>b</b> Steal
<b>2</b> 2min suspension	<b>e</b> Earned 7m	<b>c</b> Committed 7m	<b>y</b> Yellow card	<b>r</b> Red Card	<b>k</b> Blue card
<b>i</b> Earned 2min.	<b>x</b> Block	<b>4</b> 4min suspension	<b>p</b> Pass for clear chance	<b>s</b> Saved shot	<b>r</b> Received goal