



# 26th IHF Women's World Championship

Denmark • Norway • Sweden

Main Round II, 2. round



Match Team Statistics

Match No. 69

Republic of Korea 22 - 32 France

(12 - 17) (10 - 15)

8.12.2023. 18:00

Attendance: 3507

Trondheim Spektrum

Referees: Novica Mitrovic (MNE) / Miljan Vesovic (MNE)

## Republic of Korea

Players			Goals / shots									Attack					Def.			Penalties				TP	
#	Surname and name	S	Tot.	%	9m	6m	Wing	7m	FB	Brk.	LD	As.	PC	E7	E2	TF	St.	C7	Blk	YC	2m	R	B		
6	SONG Jiyoung	S	1/2	50		1/2										1	2				1			46:08	
7	SHIN Eunjoo		2/4	50		2/4						1				1	2							46:27	
11	RYU Eun Hee	S	4/8	50	1/5		2/2			1/1		3		1	1	4	2							48:53	
12	JEONG Jinhui	S																						14:37	
16	PARK Saeyoung															1								44:30	
17	JO Suyeon		3/4	75	2/2	1/2						2				3								23:20	
19	KANG Eunhye	S	1/2	50		1/2												1	1					28:43	
20	JO Eunbeen															1									
22	WOO Bitna	S	4/4	100				2/2		2/2		1	3			2								40:51	
26	KANG Eunseo		0/1	0		0/1															1			18:32	
27	JEON Jiyeon															1								0:25	
29	YUN Yejin		0/1	0						0/1														19:00	
31	GIM Boeun	S	5/8	63	1/1	3/6			1/1				1											30:25	
33	SHIN Jinmi	S	1/3	33	0/2				1/1			4	4			3		1			2			39:44	
34	LEE Hyewon		1/2	50	0/1	1/1								1		1					1			18:25	
97	KIM Sejin																								
	Team / bench																				1				
	UKUPNO		22/39	56	4/11	9/18	2/2	2/2	2/2	3/4	0/0	11	8	2	1	18	6	2	1	1	5	0	0		

Goalkeepers		Saves / shots									
#	Surname and name	Tot.	%	9m	6m	Wing	7m	FB	Brk.	LD	
12	JEONG Jinhui	0/7	0	0/3	0/1				0/3		
16	PARK Saeyoung	5/28	18	1/3	1/12		0/2	1/5	2/6		
	TOTAL	5/35	14	1/6	1/13	0/0	0/2	1/5	2/9	0/0	

Coach: Henrik Signell

Number of attacks: 54, Efficiency: 41%, Average Duration: 40.68 seconds

## Attack by type of defense

	Shots	9m	6m	Wing	TF	E7	E2
On def. 6-0	15/32	4/11	9/18	0/0	15	2	1
On def. 5-1	1/1	0/0	0/0	0/0	3	0	0
Fastbreak	2/2				0	0	0

## Defense by type

	Total	9m	6m	Wing	Stl.	C7	2m
Def. 6-0	24/34	5/9	12/14	0/0	6	2	0
Fastbreak	4/5				0	0	5

## Attack with superiority / minority / goalkeeper out

	Attack				Reaction		
	Att.	Eff.	Shots	TF	FB	LD	Tot.
7 on 6 (GK out)	1	0%	0/1	0	0/0	1/1	1/1
7 on 5 (GK out)	1	0%	0/0	1	0/0	0/0	0/0
6 on 6 (GK out)	8	25%	2/5	3	0/0	1/1	1/1
6 on 6	42	45%	19/29	13			
6 on 5	1	100%	1/1	0			
5 on 6	1	0%	0/0	1			

Player superiority / GK out counted at the end of attack (in case it changes during attack)

## Defense with superiority / minority / goalkeeper out

	Attack				Reaction		
	Att.	Eff.	Shots	TF	FB	LD	Tot.
6 on 6	41	66%	27/33	8			
5 on 6	1	0%	0/0	1			
6 on 5	10	50%	5/7	3			

Numbers show attacking numbers of opponent. Lower efficiency of opponent means better defense of this team

# Jersey number Tot. Total shooting 6m 6m (line) shooting 9m 9m shooting Wng Wing shooting FB Fastbreak sh. 7m 7m penalty sh.  
Brk. Breakthrough sh. LD Long distance sh. As. Assists PC Pass clear chance E7 Earned 7m pen. TF Technical faults St. Steals  
2m 2m punishments C7. Committed 7m E2 Earned 2m pun. YC. Yellow cards R/B Red/Blue cards Blk. Blocks S Starting Line-up

Handball statistics and livescore by Toma-soft ltd (www.toma-soft.hr)



# 26th IHF Women's World Championship

Denmark • Norway • Sweden

Main Round II, 2. round



## Match Team Statistics

Match No. 69

## Republic of Korea 22 - 32 France

(12 - 17) (10 - 15)

8.12.2023. 18:00

Attendance: 3507

Trondheim Spektrum

Referees: Novica Mitrovic (MNE) / Miljan Vesovic (MNE)

## Shot distribution by player

6 J. Song

		1/1
		0/1

1 post

7 E. Shin

		1/1
1/2		

1 post

11 E. Ryu

1/1		2/2
0/1		1/2
0/1		

1 post

17 S. Jo

		1/1
		1/1
0/1	1/1	

1/1 lob

19 E. Kang

0/1		

20 E. Jo


22 B. Woo

		2/2
1/1		1/1

26 E. Kang


1 miss.

27 J. Jeon


29 Y. Yun

	0/1	

31 B. Gim

	1/1	1/1
		1/1
1/3	1/1	

1 post

33 J. Shin

		1/1
	0/1	

1 miss.

34 H. Lee

		1/2

97 S. Kim


## TOTAL

1/1	1/1	7/7
0/2	0/1	5/7
3/8	2/3	2/3

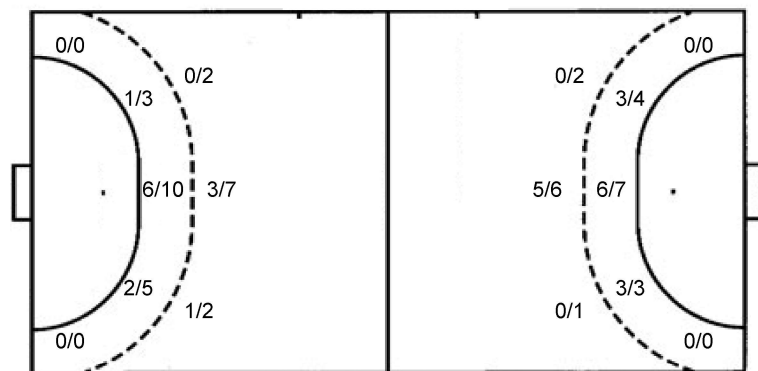
3 post 2 miss. 1/1 lob

## Saves distribution goalkeepers

<b>12 J. Jeong</b> <table><tr><td></td><td></td><td>0/1</td></tr><tr><td>0/1</td><td></td><td>0/1</td></tr><tr><td>0/1</td><td></td><td>0/3</td></tr></table>			0/1	0/1		0/1	0/1		0/3	<b>16 S. Park</b> <table><tr><td>1/2</td><td></td><td>0/3</td></tr><tr><td>0/1</td><td>1/2</td><td>1/5</td></tr><tr><td>0/6</td><td>0/2</td><td>2/6</td></tr></table>	1/2		0/3	0/1	1/2	1/5	0/6	0/2	2/6	<b>TOTAL</b> <table><tr><td>1/2</td><td></td><td>0/4</td></tr><tr><td>0/2</td><td>1/2</td><td>1/6</td></tr><tr><td>0/7</td><td>0/2</td><td>2/9</td></tr></table>	1/2		0/4	0/2	1/2	1/6	0/7	0/2	2/9
		0/1																											
0/1		0/1																											
0/1		0/3																											
1/2		0/3																											
0/1	1/2	1/5																											
0/6	0/2	2/6																											
1/2		0/4																											
0/2	1/2	1/6																											
0/7	0/2	2/9																											

## Shots by position

### ATTACK



7m penalties 2/2  
Fastbreak 2/2  
Breakthrough 3/4  
Long dist. 0/0

### DEFENSE

7m penalties 2/2  
Fastbreak 4/5  
Breakthrough 7/11  
Long dist. 2/3

## Shooting statistics

Position	Goals	Sav.	Miss.	Post	Blk.	Total	%
Back (9m)	4	5	1	1	0	11	36
Line (6m)	9	6	1	2	0	18	50
Wing	0	0	0	0	0	0	0
7m penalties	2	0	0	0	0	2	100
Fastbreak	2	0	0	0	0	2	100
Breakthrough	3	1	0	0	0	4	75
Total	20	12	2	3	0	37	54

#	Jersey number	Tot.	Total shooting	6m	6m (line) shooting	9m	9m shooting	Wng	Wing shooting	FB	Fastbreak sh.	7m	7m penalty sh.
Brk.	Breakthrough sh.	LD	Long distance sh.	As.	Assists	PC	Pass clear chance	E7	Earned 7m pen.	TF	Technical faults	St.	Steals
2m	2m punishments	C7.	Committed 7m	E2	Earned 2m pun.	YC.	Yellow cards	R/B	Red/Blue cards	Blk.	Blocks	S	Starting Line-up

Handball statistics and livescore by Toma-soft Ltd (www.toma-soft.hr)



# 26th IHF Women's World Championship

Denmark • Norway • Sweden

Main Round II, 2. round



## Match Team Statistics

Match No. 69

## Republic of Korea 22 - 32 France

(12 - 17) (10 - 15)

8.12.2023. 18:00

Attendance: 3507

Trondheim Spektrum

Referees: Novica Mitrovic (MNE) / Miljan Vesovic (MNE)

## France

Players		Goals / shots										Attack					Def.			Penalties				TP
#	Surname and name	S	Tot.	%	9m	6m	Wing	7m	FB	Brk.	LD	As.	PC	E7	E2	TF	St.	C7	Blk	YC	2m	R	B	
1	GLAUSER Laura	S																						30:00
2	NOCANDY Méline		1/4	25	0/1					1/3		1				1								13:24
3	TOUBLANC Alicia	S	3/3	100		2/2		1/1								1								30:31
6	VALENTINI Chloé	S	4/5	80		2/3			1/1		1/1		1		1	1	2							33:29
8	LASSOURCE Coralie		2/2	100		2/2																		26:28
10	ZAADI DEUNA Grace	S	2/2	100	1/1						1/1	6				1								19:42
20	FLIPPES Laura	S	1/2	50						1/2		3				1	2							39:59
21	KANOR Orlane		7/7	100	4/4					3/3		4				2		2						30:53
22	HORACEK Tamara		1/2	50	0/1			1/1				2				2	1							28:23
23	LASSOURCE Déborah		1/1	100						1/1		1												6:53
27	NZE MINKO Estelle	S	4/8	50	0/2				3/4	1/2		1		1	2	2								28:51
29	ONDONO Onacia		4/5	80		4/5									1									30:49
30	DEPUISET Camille																							30:00
31	GRANIER Lucie		2/3	67		2/2					0/1			1			1							28:19
32	BOUKTIT Sarah	S										1								1		1		29:11
34	GRANDVEAU Léna											1				1	2							13:08
	Team / bench																							
	UKUPNO		32/44	73	5/9	12/14	0/0	2/2	4/5	7/11	2/3	19	2	2	4	12	8	2	0	1	0	1	0	

Goalkeepers		Saves / shots									
#.	Surname and name	Tot.	%	9m	6m	Wing	7m	FB	Brk.	LD	
1	GLAUSER Laura	7/19	37	3/5	4/8	0/2	0/1	0/1	0/2		
30	DEPUISET Camille	5/15	33	2/4	2/7		0/1	0/1	1/2		
	TOTAL	12/34	35	5/9	6/15	0/2	0/2	1/2	1/4	0/0	

Coach: **Olivier Krumbholz**

Number of attacks: 52, Efficiency: 62%, Average Duration: 27.67 seconds

## Attack by type of defense

	Shots	9m	6m	Wing	TF	E7	E2
On def. 6-0	24/34	5/9	12/14	0/0	12	2	4
Fastbreak	4/5				0	0	0

## Attack with superiority / minority / goalkeeper out

	Attack				Reaction		
	Att.	Eff.	Shots	TF	FB	LD	Tot.
6 on 6	41	66%	27/33	8			
5 on 6	1	0%	0/0	1			
6 on 5	10	50%	5/7	3			

Player superiority / GK out counted at the end of attack (in case it changes during attack)

## Defense by type

	Total	9m	6m	Wing	Stl.	C7	2m
Def. 6-0	15/32	4/11	9/18	0/0	7	2	0
Def. 5-1	1/1	0/0	0/0	0/0	1	0	0
Fastbreak	2/2				0	0	0

## Defense with superiority / minority / goalkeeper out

	Attack				Reaction		
	Att.	Eff.	Shots	TF	FB	LD	Tot.
7 on 6 (GK out)	1	0%	0/1	0	0/0	1/1	1/1
7 on 5 (GK out)	1	0%	0/0	1	0/0	0/0	0/0
6 on 6 (GK out)	8	25%	2/5	3	0/0	1/1	1/1
6 on 6	42	45%	19/29	13			
6 on 5	1	100%	1/1	0			
5 on 6	1	0%	0/0	1			

Numbers show attacking numbers of opponent. Lower efficiency of opponent means better defense of this team

#	Jersey number	Tot.	Total shooting	6m	6m (line) shooting	9m	9m shooting	Wng	Wing shooting	FB	Fastbreak sh.	7m	7m penalty sh.
Brk.	Breakthrough sh.	LD	Long distance sh.	As.	Assists	PC	Pass clear chance	E7	Earned 7m pen.	TF	Technical faults	St.	Steals
2m	2m punishments	C7.	Committed 7m	E2	Earned 2m pun.	YC.	Yellow cards	R/B	Red/Blue cards	Blk.	Blocks	S	Starting Line-up

Handball statistics and livescore by Toma-soft ltd ([www.toma-soft.hr](http://www.toma-soft.hr))



# 26th IHF Women's World Championship

Denmark • Norway • Sweden

Main Round II, 2. round



## Match Team Statistics

Match No. 69

## Republic of Korea 22 - 32 France

(12 - 17) (10 - 15)

8.12.2023. 18:00

Attendance: 3507

Trondheim Spektrum

Referees: Novica Mitrovic (MNE) / Miljan Vesovic (MNE)

## Shot distribution by player

### 2 M. Nocandy

		1/1

2 post 1 miss.

### 3 A. Toublanc

		1/1
1/1		1/1

### 6 C. Valentini

		2/2
		1/1

1 post 1/1 lob

### 8 C. Lassource

1/1	1/1	

### 10 G. Zaadi Deuna

	1/1	
1/1		

### 20 L. Flippes

		0/1
		1/1

### 21 O. Kanor

		1/1
1/1		4/4
		1/1

### 22 T. Horacek

1/1		

1 miss.

### 23 D. Lassource

1/1		

### 27 E. Nze Minko

0/1		
	0/1	
2/2		2/3

1 block

### 29 O. Ondono

		1/1
	2/2	1/2

### 31 L. Granier

1/1		
1/1		

1 miss.

### 32 S. Bouktif


### 34 L. Grandveau


## TOTAL

1/2	1/1	4/4
2/2	1/2	5/6
7/7	2/2	8/10

3 post 3 miss. 1 block 1/1 lob

## Saves distribution goalkeepers

### 1 L. Glauser

0/1		0/3
1/1		1/4
4/6	0/2	1/1

### 30 C. Depuiset

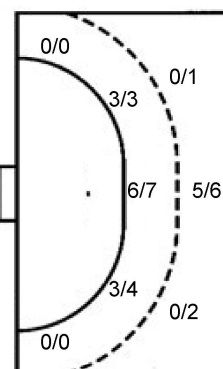
	0/1	0/4
1/1	1/1	1/3
1/2	1/1	0/2

## TOTAL

0/1	0/1	0/7
2/2	1/1	2/7
5/8	1/3	1/3

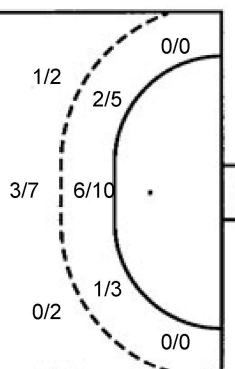
## Shots by position

### ATTACK



7m penalties 2/2  
Fastbreak 4/5  
Breakthrough 7/11  
Long dist. 2/3

### DEFENSE



7m penalties 2/2  
Fastbreak 2/2  
Breakthrough 3/4  
Long dist. 0/0

## Shooting statistics

Position	Goals	Sav.	Miss.	Post	Blk.	Total	%
Back (9m)	5	1	2	0	1	9	56
Line (6m)	12	1	0	1	0	14	86
Wing	0	0	0	0	0	0	0
7m penalties	2	0	0	0	0	2	100
Fastbreak	4	1	0	0	0	5	80
Breakthrough	7	2	0	2	0	11	64
Total	30	5	2	3	1	41	73

#	Jersey number	Tot.	Total shooting	6m	6m (line) shooting	9m	9m shooting	Wng	Wing shooting	FB	Fastbreak sh.	7m	7m penalty sh.
Brk.	Breakthrough sh.	LD	Long distance sh.	As.	Assists	PC	Pass clear chance	E7	Earned 7m pen.	TF	Technical faults	St.	Steals
2m	2m punishments	C7.	Committed 7m	E2	Earned 2m pun.	YC.	Yellow cards	R/B	Red/Blue cards	Blk.	Blocks	S	Starting Line-up

Handball statistics and livescore by Toma-soft ltd (www.toma-soft.hr)

