



# 26th IHF Women's World Championship

Denmark • Norway • Sweden

Main Round II, 2. round



Match Team Statistics

Match No. 68

## Austria 25 - 30 Angola

(14 - 16) (11 - 14)

8.12.2023. 15:30

Attendance: 1236

Trondheim Spektrum

Referees: Amar Konjicanin (BIH) / Dino Konjicanin (BIH)

### Austria

#	Surname and name	S	Goals / shots								Attack					Def.			Penalties			TP							
			Tot.	%	9m	6m	Wing	7m	FB	Brk.	LD	As.	PC	E7	E2	TF	St.	C7	Blk	YC	2m		R	B					
1	IVANČOK Lena																												32:44
3	PANDZA Katarina	S	8/13	62	2/6			1/1			5/6			2	3	1	1	3											51:55
5	FREY Sonja	S	5/8	63	2/5						3/3			3	3			1											34:18
6	DEDIĆ Mirela	S	2/2	100			1/1		1/1									1	1	1									49:22
9	KOVACS Patricia		2/4	50				1/1		1/2	0/1		3	1		2	2												28:45
15	WESS Claudia	S	2/4	50			2/4																						44:28
16	BLAŽEK Petra	S	1/1	100					1/1																				23:15
18	DRAMAC Kristina		1/2	50	1/2								1					1											8:01
19	GSCHWENTNER Lilli																												2:30
22	KAISER Stefanie																1		1	1						1			8:49
29	IVANČOK Ines	S	1/4	25	1/4											1	1	1	1	1									44:37
44	LEITNER Nora																												
54	SABATNIG Santina		0/2	0		0/2																							12:38
57	HUBER Josephine	S	3/5	60		3/5										1				2					1	2			52:35
64	PANDZA Ana												1				1	1											23:12
67	REICHERT Johanna																												2:51
	Team / bench																												
	UKUPNO		25/45	56	6/17	3/5	3/7	2/2	2/2	9/11	0/1	10	7	2	5	11	4	3	2	1	3	0	0						

Goalkeepers		Saves / shots									
#	Surname and name	Tot.	%	9m	6m	Wing	7m	FB	Brk.	LD	
1	IVANČOK Lena	9/26	35	4/7	0/3	2/5	1/2	0/3	1/5	1/1	
16	BLAŽEK Petra	1/13	8	0/7	0/2		0/1		1/3		
	TOTAL	10/39	26	4/14	0/5	2/5	1/3	0/3	2/8	1/1	

Coach: **Herbert Müller**

Number of attacks: 54, Efficiency: 46%, Average Duration: 33.55 seconds

### Attack by type of defense

	Shots	9m	6m	Wing	TF	E7	E2
On def. 6-0	21/40	6/17	3/5	3/7	11	2	5
Fastbreak	2/2				0	0	0

### Defense by type

	Total	9m	6m	Wing	Stl.	C7	2m
Def. 6-0	23/35	10/18	5/5	3/6	4	3	0
Def. press.	1/2	0/0	0/0	0/0	0	0	0
Fastbreak	3/3				0	0	3

### Attack with superiority / minority / goalkeeper out

	Attack				Reaction		
	Att.	Eff.	Shots	TF	FB	LD	Tot.
7 on 6 (GK out)	5	40%	2/4	1	0/0	0/0	0/0
7 on 5 (GK out)	1	100%	1/1	0	0/0	0/0	0/0
6 on 6 (GK out)	3	33%	1/2	1	0/0	0/1	0/1
6 on 5 (GK out)	2	50%	1/1	1	0/0	1/1	1/1
6 on 6	36	50%	18/30	6			
6 on 5	7	29%	2/5	2			

Player superiority / GK out counted at the end of attack (in case it changes during attack)

### Defense with superiority / minority / goalkeeper out

	Attack				Reaction		
	Att.	Eff.	Shots	TF	FB	LD	Tot.
7 on 6 (GK out)	1	100%	1/1	0	0/0	0/0	0/0
6 on 6 (GK out)	5	40%	2/5	0	0/0	0/1	0/1
6 on 6	43	58%	25/31	12			
7 on 5 (GK out)	2	50%	1/2	0	0/0	0/0	0/0
6 on 5	3	0%	0/2	1			
5 on 5	1	100%	1/1	0			

Numbers show attacking numbers of opponent. Lower efficiency of opponent means better defense of this team

# Jersey number Tot. Total shooting 6m 6m (line) shooting 9m 9m shooting Wng Wing shooting FB Fastbreak sh. 7m 7m penalty sh.  
 Brk. Breakthrough sh. LD Long distance sh. As. Assists PC Pass clear chance E7 Earned 7m pen. TF Technical faults St. Steals  
 2m 2m punishments C7. Committed 7m E2 Earned 2m pun. YC. Yellow cards R/B Red/Blue cards Blk. Blocks S Starting Line-up

Handball statistics and livescore by Toma-soft ltd (www.toma-soft.hr)



# 26th IHF Women's World Championship

Denmark • Norway • Sweden

Main Round II, 2. round



## Match Team Statistics

Match No. 68

## Austria 25 - 30 Angola

(14 - 16) (11 - 14)

8.12.2023. 15:30

Attendance: 1236

Trondheim Spektrum

Referees: Amar Konjicanin (BIH) / Dino Konjicanin (BIH)

### Shot distribution by player

#### 3 K. Pandza

1/2		1/1
0/1		
2/3	1/2	3/4

#### 5 S. Frey

		2/2
1/1	0/1	1/1
1/1		0/1

1 post

#### 6 M. Dedić

1/1	1/1	

#### 9 P. Kovács

		0/1
	0/1	
1/1		1/1

#### 15 C. Wess

		0/1
	0/1	1/1

1/1 lob

#### 18 K. Dramac

		1/1

1 block

#### 19 L. Gschwentner


#### 22 S. Kaiser


#### 29 I. Ivančok

	0/1	
1/1	0/1	0/1

#### 44 N. Leitner


#### 54 S. Sabatnig

0/1	0/1	

#### 57 J. Huber

	0/1	
3/3	0/1	

#### 64 A. Pandza


#### 67 J. Reichert


### TOTAL

1/2	0/2	4/6
1/2	0/2	1/1
9/11	2/7	5/8

1 post 1 block 1/1 lob

### Saves distribution goalkeepers

#### 1 L. Ivančok

2/4	0/1	1/1
0/3	1/1	2/2
1/8	1/2	0/3

#### 16 P. Blažek

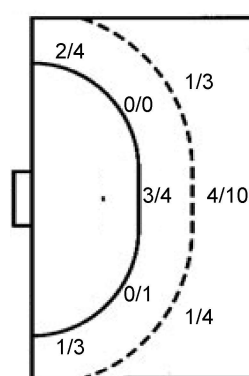
0/4	0/1	1/2
		0/1
0/3		0/2

### TOTAL

2/8	0/2	2/3
0/3	1/1	2/3
1/11	1/2	0/5

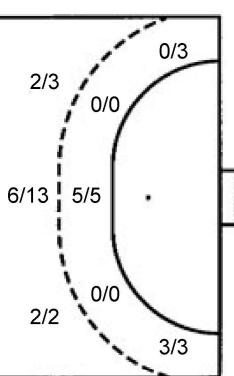
### Shots by position

#### ATTACK



7m penalties	2/2
Fastbreak	2/2
Breakthrough	9/11
Long dist.	0/1

#### DEFENSE



7m penalties	2/3
Fastbreak	3/3
Breakthrough	6/8
Long dist.	1/2

### Shooting statistics

Position	Goals	Sav.	Miss.	Post	Blk.	Total	%
Back (9m)	6	9	0	1	1	17	35
Line (6m)	3	2	0	0	0	5	60
Wing	3	4	0	0	0	7	43
7m penalties	2	0	0	0	0	2	100
Fastbreak	2	0	0	0	0	2	100
Breakthrough	9	2	0	0	0	11	82
<b>Total</b>	<b>25</b>	<b>17</b>	<b>0</b>	<b>1</b>	<b>1</b>	<b>44</b>	<b>57</b>

# Jersey number Tot. Total shooting 6m 6m (line) shooting 9m 9m shooting Wng Wing shooting FB Fastbreak sh. 7m 7m penalty sh.  
 Brk. Breakthrough sh. LD Long distance sh. As. Assists PC Pass clear chance E7 Earned 7m pen. TF Technical faults St. Steals  
 2m 2m punishments C7. Committed 7m E2 Earned 2m pun. YC. Yellow cards R/B Red/Blue cards Blk. Blocks S Starting Line-up

Handball statistics and livescore by Toma-soft ltd (www.toma-soft.hr)



# 26th IHF Women's World Championship

Denmark • Norway • Sweden

Main Round II, 2. round



Match Team Statistics

Match No. 68

## Austria 25 - 30 Angola

(14 - 16) (11 - 14)

8.12.2023. 15:30

Attendance: 1236

Trondheim Spektrum

Referees: Amar Konjicanin (BIH) / Dino Konjicanin (BIH)

### Angola

#	Surname and name	S	Goals / shots								Attack					Def.			Penalties				TP				
			Tot.	%	9m	6m	Wing	7m	FB	Brk.	LD	As.	PC	E7	E2	TF	St.	C7	Blk	YC	2m	R		B			
1	ALBERTO Marta Samuel	S																									55:41
5	MARIO Liliane Martins												1														27:30
6	MACHADO Juliana José		3/3	100	2/2										1	1								2			37:56
7	ROSARIO Dolores Palmira Lingombe Do	S																						1			3:42
8	PAULO Helena Gilda Simao																										
9	SANTOS Natalia Maria Bernardo Dos	S	3/4	75		0/1	1/1	1/1	1/1							1		1						1			47:10
10	KASSOMA Albertina Da Cruz	S	4/5	80		3/3				1/2	1		2	1	4	1	1	1									54:22
11	QUIZELETE Marilia Jacinta José		0/1	0		0/1																					12:41
13	FONSECA Natalia Mafela Kamalandua		4/4	100		2/2		2/2							1	1											31:55
16	ALMEIDA Teresa Patricia L. Filipe De																										
18	GABRIEL Chelcia Cristina		2/2	100						2/2	3	2			2	1											30:40
20	PASCOAL Stelvia De Jesus	S	3/6	50	2/4	1/1	0/1				1	4			3								1			43:48	
25	VENANCIO Liliana Da Silva																										5:33
35	CARLOS Azenaide	S	9/13	69	6/9	1/1	1/1			1/2	3		1														33:56
78	BELO Bernardeth Carla																										
90	GUIALO Isabel Evelize Wangimba	S	2/7	29	0/3			1/2		1/2	2	1			1												31:52
	Team / bench																										
	UKUPNO		30/45	67	10/18	5/5	3/6	2/3	3/3	6/8	1/2	10	7	3	3	13	3	2	1	0	4	1	0				

#	Surname and name	Saves / shots								
		Tot.	%	9m	6m	Wing	7m	FB	Brk.	LD
1	ALBERTO Marta Samuel	18/43	42	9/15	2/5	4/7	0/2	0/2	2/11	1/1
16	ALMEIDA Teresa Patricia L. Filipe De									
	TOTAL	18/43	42	9/15	2/5	4/7	0/2	0/2	2/11	1/1

Coach: Vivaldo Francisco Eduardo

Number of attacks: 55, Efficiency: 55%, Average Duration: 31.62 seconds

### Attack by type of defense

	Shots	9m	6m	Wing	TF	E7	E2
On def. 6-0	23/35	10/18	5/5	3/6	13	3	3
On def. press.	1/2	0/0	0/0	0/0	0	0	0
Fastbreak	3/3				0	0	0

### Defense by type

	Total	9m	6m	Wing	Stl.	C7	2m
Def. 6-0	21/40	6/17	3/5	3/7	3	2	0
Fastbreak	2/2				0	0	4

### Attack with superiority / minority / goalkeeper out

	Attack				Reaction		
	Att.	Eff.	Shots	TF	FB	LD	Tot.
7 on 6 (GK out)	1	100%	1/1	0	0/0	0/0	0/0
6 on 6 (GK out)	5	40%	2/5	0	0/0	0/1	0/1
6 on 6	43	58%	25/31	12			
7 on 5 (GK out)	2	50%	1/2	0	0/0	0/0	0/0
6 on 5	3	0%	0/2	1			
5 on 5	1	100%	1/1	0			

Player superiority / GK out counted at the end of attack (in case it changes during attack)

### Defense with superiority / minority / goalkeeper out

	Attack				Reaction		
	Att.	Eff.	Shots	TF	FB	LD	Tot.
7 on 6 (GK out)	5	40%	2/4	1	0/0	0/0	0/0
7 on 5 (GK out)	1	100%	1/1	0	0/0	0/0	0/0
6 on 6 (GK out)	3	33%	1/2	1	0/0	0/1	0/1
6 on 5 (GK out)	2	50%	1/1	1	0/0	1/1	1/1
6 on 6	36	50%	18/30	6			
6 on 5	7	29%	2/5	2			

Numbers show attacking numbers of opponent. Lower efficiency of opponent means better defense of this team

# Jersey number Tot. Total shooting 6m 6m (line) shooting 9m 9m shooting Wng Wing shooting FB Fastbreak sh. 7m 7m penalty sh.  
 Brk. Breakthrough sh. LD Long distance sh. As. Assists PC Pass clear chance E7 Earned 7m pen. TF Technical faults St. Steals  
 2m 2m punishments C7. Committed 7m E2 Earned 2m pun. YC. Yellow cards R/B Red/Blue cards Blk. Blocks S Starting Line-up



# 26th IHF Women's World Championship

Denmark • Norway • Sweden

Main Round II, 2. round



## Match Team Statistics

Match No. 68

## Austria 25 - 30 Angola

(14 - 16) (11 - 14)

8.12.2023. 15:30

Attendance: 1236

Trondheim Spektrum

Referees: Amar Konjicanin (BIH) / Dino Konjicanin (BIH)

### Shot distribution by player

<b>5 L. Mario</b>	<b>6 J. Machado</b>	<b>7 D. Rosario</b>	<b>8 H. Paulo</b>	<b>9 N. Santos</b>	<b>10 A. Kassoma</b>	<b>11 M. Quizelete</b>
	1/1			0/1	1/1 1/1	
				1/1	0/1	
	1/1			2/2	1/1	1/1
						1 miss.
<b>13 N. Fonseca</b>	<b>18 C. Gabriel</b>	<b>20 S. Pascoal</b>	<b>25 L. Venancio</b>	<b>35 A. Carlos</b>	<b>78 B. Belo</b>	<b>90 I. Guialo</b>
1/1	2/2	1/1 0/1		0/1 2/2 1/1		0/1
		0/1		1/1		1/1
2/2 1/1		1/1 0/1 1/1		2/2 2/2		1/2
				1 post 0/1 lob		1 post 1 miss. 1 block

### TOTAL

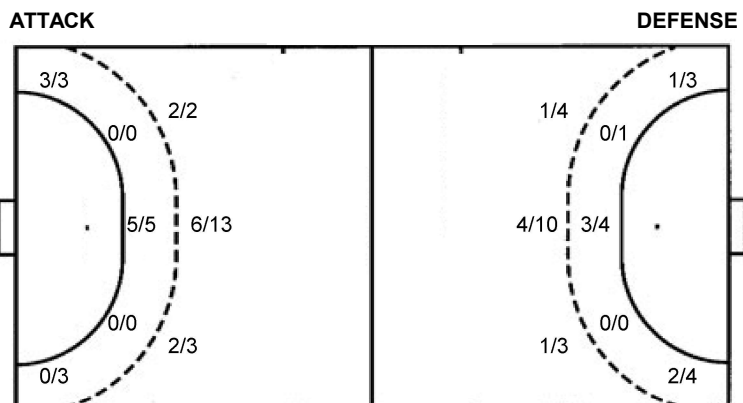
6/8	3/3	1/3
3/3	0/1	1/3
10/11	1/2	5/5

2 post 2 miss. 1 block 0/1 lob

### Saves distribution goalkeepers

<b>1 M. Alberto</b>	<b>16 T. Almeida</b>	<b>TOTAL</b>
1/2 2/2 2/6		1/2 2/2 2/6
1/2 2/2 0/1		1/2 2/2 0/1
2/11 5/8 3/8		2/11 5/8 3/8

### Shots by position



7m penalties 2/3  
 Fastbreak 3/3  
 Breakthrough 6/8  
 Long dist. 1/2

7m penalties 2/2  
 Fastbreak 2/2  
 Breakthrough 9/11  
 Long dist. 0/1

### Shooting statistics

Position	Goals	Sav.	Miss.	Post	Blk.	Total	%
Back (9m)	10	4	1	2	1	18	56
Line (6m)	5	0	0	0	0	5	100
Wing	3	2	1	0	0	6	50
7m penalties	2	1	0	0	0	3	67
Fastbreak	3	0	0	0	0	3	100
Breakthrough	6	2	0	0	0	8	75
<b>Total</b>	<b>29</b>	<b>9</b>	<b>2</b>	<b>2</b>	<b>1</b>	<b>43</b>	<b>67</b>

# Jersey number Tot. Total shooting 6m 6m (line) shooting 9m 9m shooting Wng Wing shooting FB Fastbreak sh. 7m 7m penalty sh.  
 Brk. Breakthrough sh. LD Long distance sh. As. Assists PC Pass clear chance E7 Earned 7m pen. TF Technical faults St. Steals  
 2m 2m punishments C7. Committed 7m E2 Earned 2m pun. YC. Yellow cards R/B Red/Blue cards Blk. Blocks S Starting Line-up

Handball statistics and livescore by Toma-soft ltd (www.toma-soft.hr)

