



26th IHF Women's World Championship

Denmark • Norway • Sweden

Main Round IV, 2. round



Match Team Statistics

Match No. 66

Czech Republic 30 - 22 Spain

(13 - 9) (17 - 13)

8.12.2023. 18:00

Attendance: 697

Arena Nord

Referees: Mads Hansen (DEN) / Jesper Madsen (DEN)

Czech Republic

Players		Goals / shots										Attack					Def.			Penalties				TP	
#	Surname and name	S	Tot.	%	9m	6m	Wing	7m	FB	Brk.	LD	As.	PC	E7	E2	TF	St.	C7	Blk	YC	2m	R	B		
9	STRÍŠKOVÁ Adéla																								1:14
22	ŠUSTÁČKOVÁ Marketa	S	2/5	40	0/1		1/1			1/3		3	1			3		3							52:33
24	DESORTOVÁ Eliška																								
31	STELLNEROVÁ Alena																								1:11
32	KUXOVÁ Natálie		1/1	100					1/1								1								18:54
33	KUDLÁČKOVÁ Petra	S													1										57:52
34	FRANKOVÁ Julie		1/1	100	1/1														1	1					28:15
38	FRANKOVÁ Anna																								8:41
42	DRESSLEROVÁ Katka		0/1	0		0/1						1				2		1				1			14:35
44	ZACHOVÁ Dominika	S	2/3	67			1/2		1/1			1					1								50:13
48	KOVÁŘOVÁ Sára																								0:31
51	JERABKOVÁ Marketa	S	9/14	64	5/8	1/1				3/5		7	3			1	2	2							60:00
67	MALÁ Veronika	S	7/10	70		1/1	4/7		2/2			1				2	1	1					1		60:00
79	NOVOTNÁ Sabrina																								0:13
91	JESTŘÍBKOVÁ Anna	S	0/1	0		0/1										1									5:48
96	CHOLEVOVÁ Charlotte	S	8/10	80	2/4	2/2				4/4		4	2			1									60:00
	Team / bench																								
	UKUPNO		30/46	65	8/14	4/6	6/10	0/0	4/4	8/12	0/0	17	6	0	0	11	5	7	1	1	2	0	0		

Goalkeepers		Saves / shots									
#	Surname and name	Tot.	%	9m	6m	Wing	7m	FB	Brk.	LD	
33	KUDLÁČKOVÁ Petra	18/39	46	8/9	4/8	2/9	1/6		3/7		
79	NOVOTNÁ Sabrina	0/1	0				0/1				
	TOTAL	18/40	45	8/9	4/8	2/9	1/7	0/0	3/7	0/0	

Coach: **Bent Dahl**

Number of attacks: 55, Efficiency: 55%, Average Duration: 28.29 seconds

Attack by type of defense

	Shots	9m	6m	Wing	TF	E7	E2
On def. 6-0	16/28	6/11	2/4	5/8	11	0	0
On def. 5-1	7/8	1/1	1/1	1/1	0	0	0
On def. 3-3	3/6	1/2	1/1	0/1	0	0	0
Fastbreak	4/4				0	0	0

Defense by type

	Total	9m	6m	Wing	Stl.	C7	2m
Def. 6-0	15/37	1/12	3/8	7/9	5	7	0
Fastbreak	0/1				0	0	2

Attack with superiority / minority / goalkeeper out

	Attack				Reaction		
	Att.	Eff.	Shots	TF	FB	LD	Tot.
6 on 6 (GK out)	2	50%	1/2	0	0/0	0/0	0/0
6 on 6	52	54%	28/41	11			
5 on 6	1	100%	1/1	0			

Player superiority / GK out counted at the end of attack (in case it changes during attack)

Defense with superiority / minority / goalkeeper out

	Attack				Reaction		
	Att.	Eff.	Shots	TF	FB	LD	Tot.
6 on 6	53	40%	21/40	13			
6 on 5	3	33%	1/1	2			

Numbers show attacking numbers of opponent. Lower efficiency of opponent means better defense of this team

Jersey number Tot. Total shooting 6m 6m (line) shooting 9m 9m shooting Wng Wing shooting FB Fastbreak sh. 7m 7m penalty sh.
 Brk. Breakthrough sh. LD Long distance sh. As. Assists PC Pass clear chance E7 Earned 7m pen. TF Technical faults St. Steals
 2m 2m punishments C7. Committed 7m E2 Earned 2m pun. YC. Yellow cards R/B Red/Blue cards Blk. Blocks S Starting Line-up



26th IHF Women's World Championship

Denmark • Norway • Sweden

Main Round IV, 2. round



Match Team Statistics

Match No. 66

Czech Republic 30 - 22 Spain

(13 - 9) (17 - 13)

8.12.2023. 18:00

Attendance: 697

Arena Nord

Referees: Mads Hansen (DEN) / Jesper Madsen (DEN)

Shot distribution by player

9 A. Střížková [Grid]	22 M. Šustáčková [Grid] 1/1 0/1 1 post 1 miss. 1/1 lob	24 E. Desortová [Grid]	31 A. Stellnerová [Grid]	32 N. Kuxová [Grid] 1/1	34 J. Franková [Grid] 1/1	38 A. Franková [Grid]
42 K. Dresslerová [Grid] 0/1	44 D. Zachova [Grid] 2/2 1 post	48 S. Kovářová [Grid]	51 M. Jerabkova [Grid] 1/2 0/1 1/2 2/3 1/1 1/1 3/3 1 miss.	67 V. Malá [Grid] 3/3 1/2 1/1 0/1 1/1 1 miss. 1/1 lob	91 A. Jestřibková [Grid] 1 miss.	96 C. Cholevová [Grid] 4/4 1/1 1/2 2/3

TOTAL

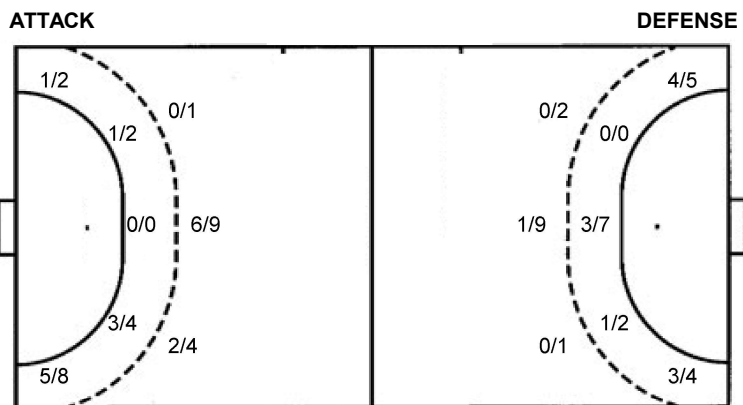
3/4	0/1	9/10
4/6		3/3
3/5	0/2	6/7

2 post 4 miss. 2/2 lob

Saves distribution goalkeepers

33 P. Kudláčková [Grid] 2/2 2/5 2/5 4/4 2/5 3/4 2/10	79 S. Novotná [Grid] 0/1	TOTAL [Grid] 2/2 2/5 2/5 4/4 3/4 1/2 2/6 2/10
--	------------------------------------	---

Shots by position



7m penalties	0/0	7m penalties	6/7
Fastbreak	4/4	Fastbreak	0/1
Breakthrough	8/12	Breakthrough	4/8
Long dist.	0/0	Long dist.	0/0

Shooting statistics

Position	Goals	Sav.	Miss.	Post	Blk.	Total	%
Back (9m)	8	6	0	0	0	14	57
Line (6m)	4	1	1	0	0	6	67
Wing	6	2	1	1	0	10	60
7m penalties	0	0	0	0	0	0	0
Fastbreak	4	0	0	0	0	4	100
Breakthrough	8	1	2	1	0	12	67
Total	30	10	4	2	0	46	65

Jersey number Tot. Total shooting 6m 6m (line) shooting 9m 9m shooting Wng Wing shooting FB Fastbreak sh. 7m 7m penalty sh.
 Brk. Breakthrough sh. LD Long distance sh. As. Assists PC Pass clear chance E7 Earned 7m pen. TF Technical faults St. Steals
 2m 2m punishments C7. Committed 7m E2 Earned 2m pun. YC. Yellow cards R/B Red/Blue cards Blk. Blocks S Starting Line-up



26th IHF Women's World Championship

Denmark • Norway • Sweden

Main Round IV, 2. round



Match Team Statistics

Match No. 66

Czech Republic 30 - 22 Spain

(13 - 9) (17 - 13)

8.12.2023. 18:00

Attendance: 697

Arena Nord

Referees: Mads Hansen (DEN) / Jesper Madsen (DEN)

Spain

#	Surname and name	S	Goals / shots									Attack				Def.			Penalties				TP			
			Tot.	%	9m	6m	Wing	7m	FB	Brk.	LD	As.	PC	E7	E2	TF	St.	C7	Blk	YC	2m	R		B		
2	LOPEZ HERRERO Marta		3/3	100		1/1	2/2																			33:56
6	CAMPOS COSTA Carmen		1/2	50											1											10:20
8	ARDERIUS MARTIN Silvia		1/1	100				1/1							2	2										17:40
16	CASTELLANOS SOANEZ Mercedes																									25:12
18	ECHEVERRIA MARTINEZ Maitane	S	1/3	33				1/2		0/1						1										26:05
19	SOMAZA BOSCH Ester		1/4	25	1/4																					9:49
20	GONZALEZ DE GARIBAY BARBA Amaia																									
22	GONZALEZ ORTEGA Lara	S																								27:06
27	SO DELGADO-PINTO Danila Patricia		0/2	0	0/2																					1:56
30	LOPEZ JIMENEZ Soledad	S	4/5	80				4/5																		59:13
33	GASSAMA CISSOKHO Kaba		2/5	40		2/5										2										22:57
34	FERNANDEZ FRAGA Alicia		0/1	0					0/1						4	2										30:07
48	ZOQBI DE PAULA Darly	S																								34:48
52	PEREZ BUFORN Paulina	S	6/9	67	0/2	1/1		5/5		0/1					3											37:55
61	TCHAPCHET DEFO Lysa	S	0/2	0		0/2										3										33:04
62	ARCOS POVEDA Paula	S	3/9	33	0/4					3/5					1	2	1	1	1	1						49:52
	Team / bench																									
	UKUPNO		22/46	48	1/12	4/9	7/9	6/7	0/1	4/8	0/0				11	6	7	2	15	2	0	0	0	0	0	0

#	Surname and name	Saves / shots								
		Tot.	%	9m	6m	Wing	7m	FB	Brk.	LD
16	CASTELLANOS SOANEZ Mercedes	5/18	28	3/7	0/2	1/2		0/1	1/6	
48	ZOQBI DE PAULA Darly	5/22	23	3/7	1/3	1/6		0/3	0/3	
	TOTAL	10/40	25	6/14	1/5	2/8	0/0	0/4	1/9	0/0

Coach: Ambrosio Jose Martin Cedres

Number of attacks: 56, Efficiency: 39%, Average Duration: 36.50 seconds

Attack by type of defense

	Shots	9m	6m	Wing	TF	E7	E2
On def. 6-0	15/37	1/12	3/8	7/9	15	7	2
Fastbreak	0/1				0	0	0

Defense by type

	Total	9m	6m	Wing	Stl.	C7	2m
Def. 6-0	16/28	6/11	2/4	5/8	2	0	0
Def. 5-1	7/8	1/1	1/1	1/1	0	0	0
Def. 3-3	3/6	1/2	1/1	0/1	0	0	0
Fastbreak	4/4				0	0	0

Attack with superiority / minority / goalkeeper out

	Attack				Reaction		
	Att.	Eff.	Shots	TF	FB	LD	Tot.
6 on 6	53	40%	21/40	13			
6 on 5	3	33%	1/1	2			

Player superiority / GK out counted at the end of attack (in case it changes during attack)

Defense with superiority / minority / goalkeeper out

	Attack				Reaction		
	Att.	Eff.	Shots	TF	FB	LD	Tot.
6 on 6 (GK out)	2	50%	1/2	0	0/0	0/0	0/0
6 on 6	52	54%	28/41	11			
5 on 6	1	100%	1/1	0			

Numbers show attacking numbers of opponent. Lower efficiency of opponent means better defense of this team

Jersey number Tot. Total shooting 6m 6m (line) shooting 9m 9m shooting Wng Wing shooting FB Fastbreak sh. 7m 7m penalty sh.
 Brk. Breakthrough sh. LD Long distance sh. As. Assists PC Pass clear chance E7 Earned 7m pen. TF Technical faults St. Steals
 2m 2m punishments C7. Committed 7m E2 Earned 2m pun. YC. Yellow cards R/B Red/Blue cards Blk. Blocks S Starting Line-up



26th IHF Women's World Championship

Denmark • Norway • Sweden

Main Round IV, 2. round



Match Team Statistics

Match No. 66

Czech Republic 30 - 22 Spain

(13 - 9) (17 - 13)

8.12.2023. 18:00

Attendance: 697

Arena Nord

Referees: Mads Hansen (DEN) / Jesper Madsen (DEN)

Shot distribution by player

2 M. Lopez Herrero

1/1		
		1/1

1/1 lob

6 C. Campos Costa

	0/1	
		1/1

8 S. Arderius Martin

		1/1

18 M. Echeverria Martinez

1/1	0/1	

1 miss.

19 E. Somaza Bosch

	1/2	

1 post 1 block

20 A. Gonzalez De Garibay Barba

22 L. Gonzalez Ortega

27 D. So Delgado-Pinto

	0/1	
0/1		

30 S. Lopez Jimenez

2/2	0/1	1/1

1/1 lob

33 K. Gassama Cissokho

		1/2
	0/1	1/2

34 A. Fernandez Fraga

		0/1

52 P. Perez Buforn

		0/1
		2/2
1/1		3/4

1 post

61 L. Tchaptchet Defo

0/1		

1 post

62 P. Arcos Poveda

0/2		1/1
1/2	0/1	
0/1		1/1

1 miss.

TOTAL

0/2		1/2
3/5	0/4	4/6
3/5	1/4	8/10

3 post 2 miss. 1 block 2/2 lob

Saves distribution goalkeepers

16 M. Castellanos Soanez

1/3	1/1	1/5
1/3		0/1
1/2		0/3

48 D. Zoqbi De Paula

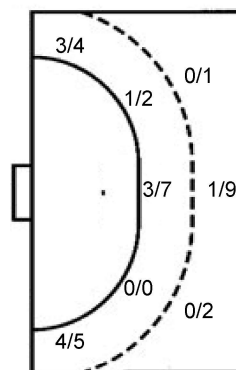
0/1		0/5
1/3		0/2
1/3	2/2	1/4

TOTAL

1/4	1/1	1/10
2/6		0/3
2/5	2/2	1/7

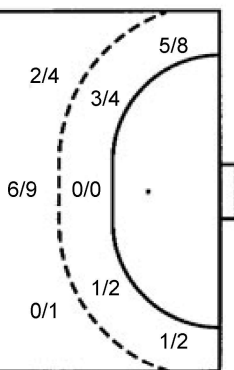
Shots by position

ATTACK



7m penalties 6/7
Fastbreak 0/1
Breakthrough 4/8
Long dist. 0/0

DEFENSE



7m penalties 0/0
Fastbreak 4/4
Breakthrough 8/12
Long dist. 0/0

Shooting statistics

Position	Goals	Sav.	Miss.	Post	Blk.	Total	%
Back (9m)	1	8	0	2	1	12	8
Line (6m)	4	4	0	1	0	9	44
Wing	7	2	0	0	0	9	78
7m penalties	6	1	0	0	0	7	86
Fastbreak	0	0	1	0	0	1	0
Breakthrough	4	3	1	0	0	8	50
Total	22	18	2	3	1	46	48

Jersey number Tot. Total shooting 6m 6m (line) shooting 9m 9m shooting Wng Wing shooting FB Fastbreak sh. 7m 7m penalty sh.
Brk. Breakthrough sh. LD Long distance sh. As. Assists PC Pass clear chance E7 Earned 7m pen. TF Technical faults St. Steals
2m 2m punishments C7. Committed 7m E2 Earned 2m pun. YC. Yellow cards R/B Red/Blue cards Blk. Blocks S Starting Line-up

Handball statistics and livescore by Toma-soft ltd (www.toma-soft.hr)



26th IHF Women's World Championship

Denmark • Norway • Sweden

Main Round IV, 2. round

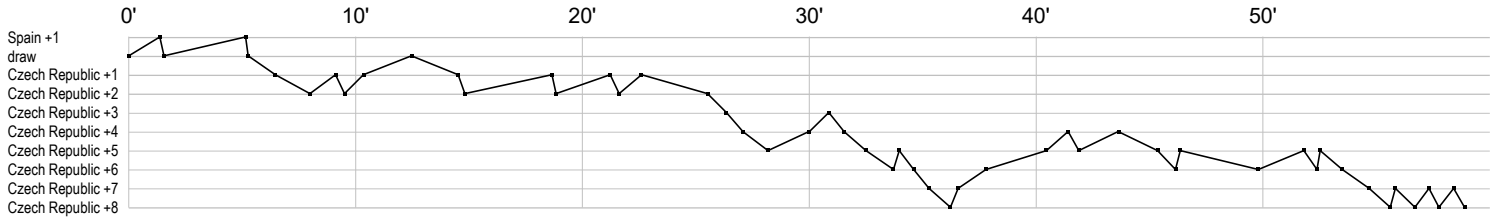


Match Team Statistics
Match No. 66

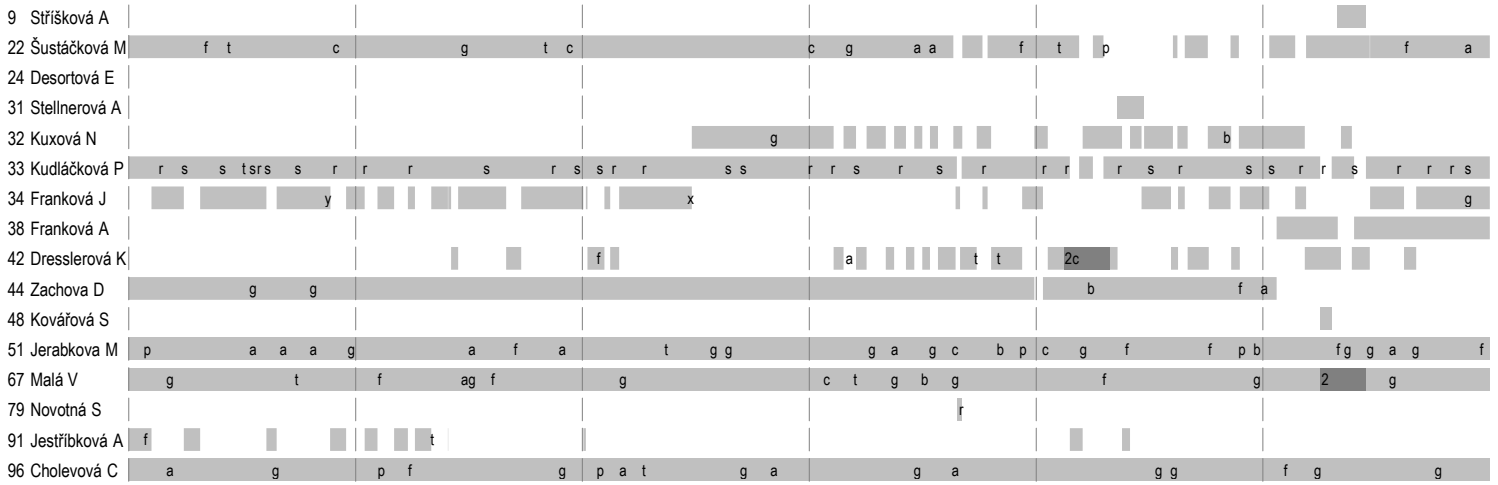
Czech Republic 30 - 22 Spain
(13 - 9) (17 - 13)

8.12.2023. 18:00
Attendance: 697
Arena Nord

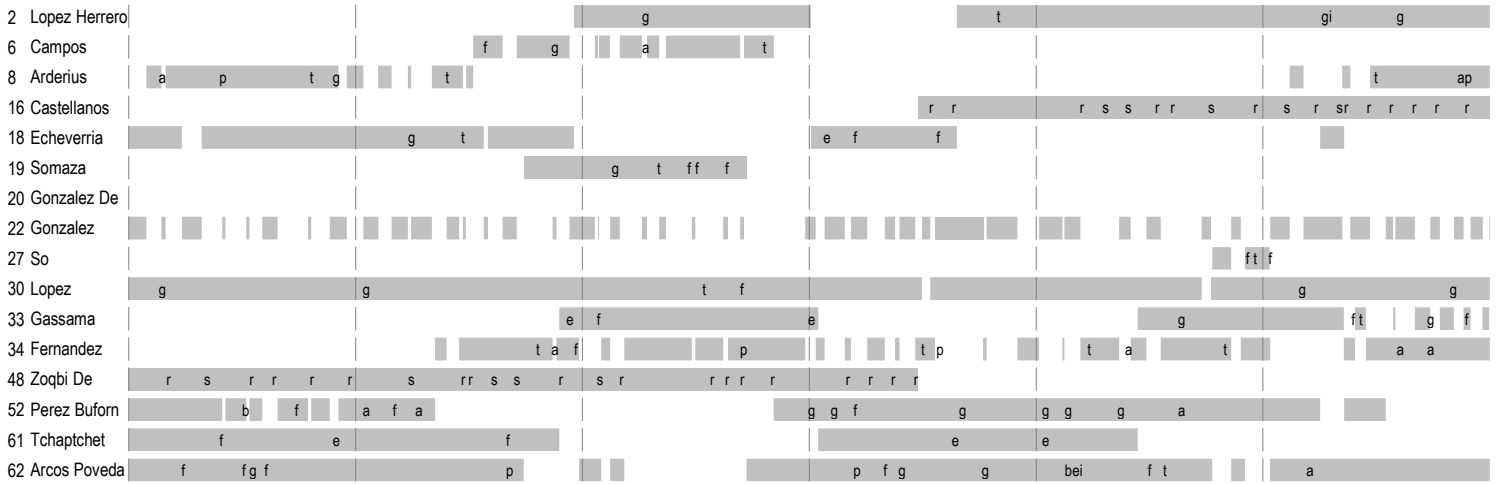
Referees: Mads Hansen (DEN) / Jesper Madsen (DEN)



Czech Republic



Spain



In game	g Goal scored	f Missed shot	a Assist	t Technical faults	b Steal
2 2min suspension	e Earned 7m	c Committed 7m	y Yellow card	r Red Card	k Blue card
i Earned 2min.	x Block	4 4min suspension	p Pass for clear chance	s Saved shot	r Received goal