



26th IHF Women's World Championship

Denmark • Norway • Sweden

Main Round III, 1. round



Match Team Statistics

Match No. 64

Denmark 26 - 27 Japan

(12 - 12) (14 - 15)

7.12.2023. 20:30

Attendance: 6707

Jyske Bank Boxen

Referees: Yann Carmaux (FRA) / Julien Mursch (FRA)

Shot distribution by player

5 S. Iversen

		1/2
1/1		

1 post

6 H. Hageso

1/1		

8 A. Hansen

10 K. Heindahl

1/1		

11 L. Haugsted

	1/1	

1 miss.

21 A. Hansen

23 K. Jorgensen

		0/2
		0/1
		2/4

1 miss.

25 T. Jensen

1/2		
		0/1
2/3	0/1	

1/1 lob

27 L. Bargaard

1/1	2/2	

1 miss.

31 S. Petersen

1 post 1 miss.

32 M. Hojlund

1/1	1/1	1/1
1/2	0/1	1/1

33 E. Friis

1/1		
	1/1	1/1

1/1 lob

34 R. Iversen

1/1		

1 post

41 E. Halilcevic

1/1	0/1	1/2

1 post

TOTAL

4/5	1/2	2/5
2/3	0/1	2/5
6/7	4/5	3/5

4 post 4 miss. 2/2 lob

Saves distribution goalkeepers

1 S. Toft

0/1	0/1	
	0/1	0/1

16 A. Reinhardt

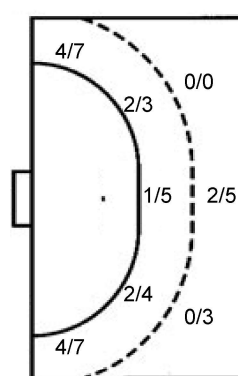
2/6	2/2	1/5
0/2	1/1	2/2
0/7	2/2	2/5

TOTAL

2/7	2/3	1/5
0/2	1/1	2/2
0/7	2/3	2/6

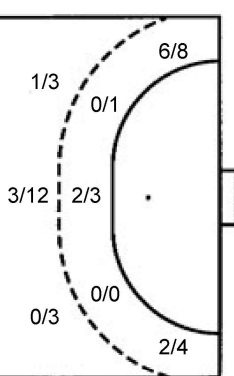
Shots by position

ATTACK



7m penalties 2/2
Fastbreak 0/1
Breakthrough 8/10
Long dist. 1/1

DEFENSE



7m penalties 3/5
Fastbreak 0/1
Breakthrough 9/10
Long dist. 1/1

Shooting statistics

Position	Goals	Sav.	Miss.	Post	Blk.	Total	%
Back (9m)	2	5	1	0	0	8	25
Line (6m)	5	3	2	2	0	12	42
Wing	8	5	0	1	0	14	57
7m penalties	2	0	0	0	0	2	100
Fastbreak	0	1	0	0	0	1	0
Breakthrough	8	0	1	1	0	10	80
Total	25	14	4	4	0	47	53

Jersey number Tot. Total shooting 6m 6m (line) shooting 9m 9m shooting Wng Wing shooting FB Fastbreak sh. 7m 7m penalty sh.
Brk. Breakthrough sh. LD Long distance sh. As. Assists PC Pass clear chance E7 Earned 7m pen. TF Technical faults St. Steals
2m 2m punishments C7. Committed 7m E2 Earned 2m pun. YC. Yellow cards R/B Red/Blue cards Blk. Blocks S Starting Line-up

Handball statistics and livescore by Toma-soft ltd (www.toma-soft.hr)



26th IHF Women's World Championship

Denmark • Norway • Sweden

Main Round III, 1. round



Match Team Statistics

Match No. 64

Denmark 26 - 27 Japan

(12 - 12) (14 - 15)

7.12.2023. 20:30

Attendance: 6707

Jyske Bank Boxen

Referees: Yann Carmaux (FRA) / Julien Mursch (FRA)

Japan

Players		Goals / shots										Attack					Def.			Penalties				TP	
#	Surname and name	S	Tot.	%	9m	6m	Wing	7m	FB	Brk.	LD	As.	PC	E7	E2	TF	St.	C7	Blk	YC	2m	R	B		
1	KAMETANI Sakura	S																							54:00
2	NAGATA Mika																	1							14:44
3	SAHARA Naoko																								0:02
4	HATSUMI Miyako													1	1										7:27
6	KITAHARA Yumi	S																1							26:58
7	HATTORI Saki	S	7/10	70	0/1	1/1	2/4	3/3			1/1						1								58:06
9	KASAI Chikako	S	1/2	50		1/2								1	1			1							51:31
13	NAKAYAMA Kaho		4/8	50	0/3	0/1				4/4		1		1	1	3									32:39
18	MATSUMOTO Hikaru		3/5	60			3/5						1												23:58
20	AKIYAMA Natsumi																								10:00
22	SAITO Naho																								0:32
23	AIZAWA Natsuki	S	4/10	40	2/6			0/1		2/3		6	4	2		1	1								59:19
24	OKADA Ayame															1									0:31
32	SASAKI Haruno	S	5/12	42	2/8			0/1		3/3		3	2					1							49:26
51	YOSHIDOME Yuki	S	3/4	75			3/3		0/1									1							21:45
89	ISHIKAWA Sora																								9:02
	Team / bench															3									
	UKUPNO		27/51	53	4/18	2/4	8/12	3/5	0/1	9/10	1/1	10	7	5	4	8	5	2	0	0	0	2	0	0	

Goalkeepers		Saves / shots									
#	Surname and name	Tot.	%	9m	6m	Wing	7m	FB	Brk.	LD	
1	KAMETANI Sakura	14/37	38	5/7	3/8	5/13		1/1	0/8		
22	SAITO Naho	0/2	0				0/2				
	TOTAL	14/39	36	5/7	3/8	5/13	0/2	2/1	0/8	0/0	

Coach: Shigeo Kusumoto

Number of attacks: 54, Efficiency: 50%, Average Duration: 37.33 seconds

Attack by type of defense

	Shots	9m	6m	Wing	TF	E7	E2
On def. 6-0	23/44	4/18	2/4	8/12	8	5	4
Fastbreak	0/1				0	0	0

Defense by type

	Total	9m	6m	Wing	Stl.	C7	2m
Def. 6-0	22/41	2/8	5/11	7/12	5	2	0
Def. 5-1	1/2	0/0	0/1	1/1	0	0	0
Fastbreak	0/1				0	0	2

Attack with superiority / minority / goalkeeper out

	Attack				Reaction		
	Att.	Eff.	Shots	TF	FB	LD	Tot.
7 on 6 (GK out)	7	43%	3/6	1	0/0	1/1	1/1
6 on 6 (GK out)	3	33%	1/2	1	0/0	0/0	0/0
6 on 6	35	49%	17/30	5			
7 on 5 (GK out)	1	100%	1/1	0	0/0	0/0	0/0
6 on 5	8	63%	5/7	1			

Player superiority / GK out counted at the end of attack (in case it changes during attack)

Defense with superiority / minority / goalkeeper out

	Attack				Reaction		
	Att.	Eff.	Shots	TF	FB	LD	Tot.
7 on 6 (GK out)	6	50%	3/4	2	0/0	1/1	1/1
6 on 6 (GK out)	8	63%	5/7	1	0/0	0/0	0/0
6 on 6	36	50%	18/31	5			
6 on 5	3	0%	0/2	1			
5 on 6	1	0%	0/1	0			

Numbers show attacking numbers of opponent. Lower efficiency of opponent means better defense of this team

Jersey number Tot. Total shooting 6m 6m (line) shooting 9m 9m shooting Wng Wing shooting FB Fastbreak sh. 7m 7m penalty sh.
 Brk. Breakthrough sh. LD Long distance sh. As. Assists PC Pass clear chance E7 Earned 7m pen. TF Technical faults St. Steals
 2m 2m punishments C7. Committed 7m E2 Earned 2m pun. YC. Yellow cards R/B Red/Blue cards Blk. Blocks S Starting Line-up



26th IHF Women's World Championship

Denmark • Norway • Sweden

Main Round III, 1. round



Match Team Statistics

Match No. 64

Denmark 26 - 27 Japan

(12 - 12) (14 - 15)

7.12.2023. 20:30

Attendance: 6707

Jyske Bank Boxen

Referees: Yann Carmaux (FRA) / Julien Mursch (FRA)

Shot distribution by player

2 M. Nagata

3 N. Sahara

4 M. Hatsumi

6 Y. Kitahara

7 S. Hattori

2/2	1/1	2/2
2/2	0/1	

1 post 1 miss.

9 C. Kasai

1/1		0/1

13 K. Nakayama

0/1		
		0/1
	1/1	2/2

2 miss. 1/1 lob

18 H. Matsumoto

	0/1	
2/2		1/1

1 post

20 N. Akiyama

23 N. Aizawa

1/2	0/1	1/1
2/2	0/1	

3 block

24 A. Okada

32 H. Sasaki

1/1	1/2	
1/1		
1/1		0/2

4 block 1/1 lob

51 Y. Yoshidome

1/1		1/2
		1/1

89 S. Ishikawa

TOTAL

5/7	2/4	4/5
2/2	0/1	0/2
7/7	1/3	4/6

2 post 3 miss. 7 block 2/2 lob

Saves distribution goalkeepers

1 S. Kametani

1/5	1/1	3/5
1/2	1/1	3/5
1/7	1/4	2/5

22 N. Saito

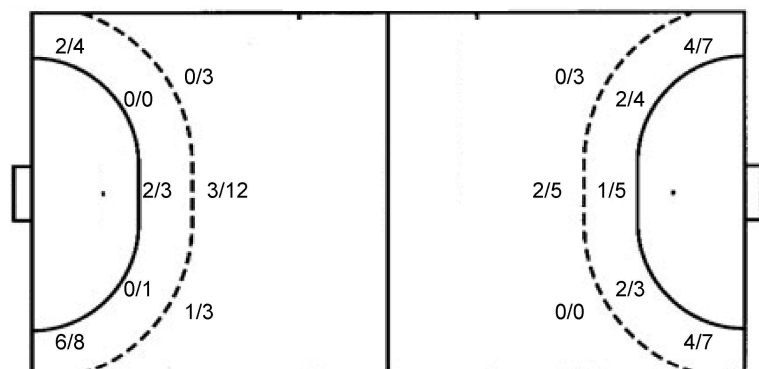
0/1		
	0/1	

TOTAL

1/5	1/1	3/5
1/3	1/1	3/5
1/7	1/5	2/5

Shots by position

ATTACK



7m penalties 3/5
Fastbreak 0/1
Breakthrough 9/10
Long dist. 1/1

DEFENSE

7m penalties 2/2
Fastbreak 0/1
Breakthrough 8/10
Long dist. 1/1

Shooting statistics

Position	Goals	Sav.	Miss.	Post	Blk.	Total	%
Back (9m)	4	4	3	0	7	18	22
Line (6m)	2	2	0	0	0	4	50
Wing	8	2	0	2	0	12	67
7m penalties	3	2	0	0	0	5	60
Fastbreak	0	1	0	0	0	1	0
Breakthrough	9	1	0	0	0	10	90
Total	26	12	3	2	7	50	52

Jersey number Tot. Total shooting 6m 6m (line) shooting 9m 9m shooting Wng Wing shooting FB Fastbreak sh. 7m 7m penalty sh.
Brk. Breakthrough sh. LD Long distance sh. As. Assists PC Pass clear chance E7 Earned 7m pen. TF Technical faults St. Steals
2m 2m punishments C7. Committed 7m E2 Earned 2m pun. YC. Yellow cards R/B Red/Blue cards Blk. Blocks S Starting Line-up

Handball statistics and livescore by Toma-soft ltd (www.toma-soft.hr)

