



# 26th IHF Women's World Championship

Denmark • Norway • Sweden

President's Cup II, 1. round



## Match Team Statistics

Match No. 58

## Chile 30 - 20 Iran

(14 - 6) (16 - 14)

7.12.2023. 13:00

Attendance: 220

Arena Nord

Referees: Yufeng Cheng (CHN) / Yunlei Zhou (CHN)

### Chile

#	Surname and name	S	Goals / shots								Attack					Def.			Penalties				TP								
			Tot.	%	9m	6m	Wing	7m	FB	Brk.	LD	As.	PC	E7	E2	TF	St.	C7	Blk	YC	2m	R		B							
4	PAUL Constanza	S	2/3	67	1/2					1/1					2	2															38:30
5	RAMIREZ MUNOZ Romina Antonia	S	5/8	63		1/1	2/4			2/3																					35:26
6	LOVERA SALAS Valeska Andrea	S	6/10	60	2/5		0/1	4/4							1								4							29:49	
7	MÜLLER RUIZ Gabriela Belén		3/6	50			0/1			3/5													4	1						35:49	
8	ARAYA SALFATE Josefa Ignacia	S	4/7	57	1/3	1/1		1/1	0/1	1/1				1	1															34:21	
9	GALVEZ Catalina		0/1	0	0/1									1	2															17:34	
10	PARRA PARRA Francisca Andrea	S	3/4	75	1/1					2/3				3	2	2	1	1					2	1	1					36:35	
14	MORENO CORDOVA Catalina Francisca		2/2	100		2/2									1															25:34	
16	TORRES LARA Alicia Ignacia	S	2/4	50		2/4									1															24:55	
17	PACHECO CORTÉS Pía Victoria		1/1	100		1/1																								32:22	
18	CORREA VERGARA Maria Elena													1																12:23	
19	PIANTINI AVENDANO Antonella Valentina																													10:23	
22	ÁLVAREZ GYLLEN Maura Andrea		0/1	0	0/1										1															24:20	
23	CORTEZ FUENZALIDA Madeleine Noelia	S												4	2															49:17	
27	ZAVALA REYES Francisca Elena																														
28	CARRASCO Valeria		2/2	100						2/2				1																12:34	
	Team / bench																														
	UKUPNO		30/49	61	5/13	7/9	2/6	5/5	5/9	6/7	0/0			13	9	6	1	20	2	6	2	1	2	0	0						

Goalkeepers		Saves / shots									
#	Surname and name	Tot.	%	9m	6m	Wing	7m	FB	Brk.	LD	
19	PIANTINI AVENDANO Antonella Valentina	4/9	44	0/1	1/1		2/3	0/1	1/3		
23	CORTEZ FUENZALIDA Madeleine Noelia	13/28	46	9/9	1/2	1/5	0/2	1/5	1/5		
	TOTAL	17/37	46	9/10	2/3	1/5	2/5	1/6	2/8	0/0	

Coach: Felipe Barrientos

Number of attacks: 63, Efficiency: 48%, Average Duration: 28.55 seconds

### Attack by type of defense

	Shots	9m	6m	Wing	TF	E7	E2
On def. 6-0	8/13	4/5	2/4	1/2	4	2	1
On def. 5-1	12/22	1/8	5/5	1/4	15	4	0
On def. 3-3	0/0	0/0	0/0	0/0	1	0	0
Fastbreak	5/9				0	0	0

### Defense by type

	Total	9m	6m	Wing	Stl.	C7	2m
Def. 6-0	12/33	1/16	1/3	4/5	1	4	0
Def. 4-2	0/1	0/1	0/0	0/0	1	2	0
Fastbreak	5/7				0	0	2

### Attack with superiority / minority / goalkeeper out

	Attack				Reaction		
	Att.	Eff.	Shots	TF	FB	LD	Tot.
7 on 6 (GK out)	1	0%	0/1	0	0/0	0/1	0/1
6 on 6	54	48%	26/37	17			
6 on 5	5	60%	3/4	1			
5 on 6	3	33%	1/1	2			

Player superiority / GK out counted at the end of attack (in case it changes during attack)

### Defense with superiority / minority / goalkeeper out

	Attack				Reaction		
	Att.	Eff.	Shots	TF	FB	LD	Tot.
6 on 6	56	34%	19/41	15			
5 on 6	3	0%	0/2	1			
6 on 5	3	33%	1/2	1			

Numbers show attacking numbers of opponent. Lower efficiency of opponent means better defense of this team

# Jersey number Tot. Total shooting 6m 6m (line) shooting 9m 9m shooting Wng Wing shooting FB Fastbreak sh. 7m 7m penalty sh.  
 Brk. Breakthrough sh. LD Long distance sh. As. Assists PC Pass clear chance E7 Earned 7m pen. TF Technical faults St. Steals  
 2m 2m punishments C7. Committed 7m E2 Earned 2m pun. YC. Yellow cards R/B Red/Blue cards Blk. Blocks S Starting Line-up

Handball statistics and livescore by Toma-soft ltd (www.toma-soft.hr)



# 26th IHF Women's World Championship

Denmark • Norway • Sweden

President's Cup II, 1. round



## Match Team Statistics

Match No. 58

## Chile 30 - 20 Iran

(14 - 6) (16 - 14)

7.12.2023. 13:00

Attendance: 220

Arena Nord

Referees: Yufeng Cheng (CHN) / Yunlei Zhou (CHN)

### Shot distribution by player

<b>4 C. Paul</b> 1 miss. 1/1 1/1	<b>5 R. Ramirez Munoz</b> 1 post 1 miss. 1/1 lob 1/2 1/1 1/1 1/1	<b>6 V. Lovera Salas</b> 1 post 0/1 1/1 2/2 0/1 2/3	<b>7 G. Müller Ruiz</b> 1 miss. 0/1 lob 1/1 2/2	<b>8 J. Araya Salfate</b> 1 post 1 miss. 1/1 1/2 2/2	<b>9 C. Galvez</b> 1 block	<b>10 F. Parra Parra</b> 1/1 lob 1/1 1/2
<b>14 C. Moreno Córdova</b> 2/2	<b>16 A. Torres Lara</b> 0/1 1/1 0/1 1/1	<b>17 P. Pacheco Cortés</b> 1/1	<b>18 M. Correa Vergara</b>	<b>22 M. Álvarez Gyllen</b> 1 block	<b>27 F. Zavala Reyes</b>	<b>28 V. Carrasco</b> 1/1 1/1

### TOTAL

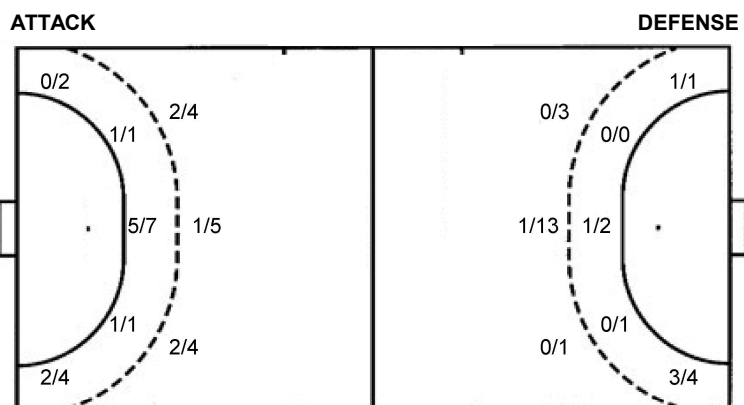
1/2	2/2	3/3
3/4	0/1	2/3
7/10	1/2	9/10

3 post 4 miss. 2 block 2/3 lob

### Saves distribution goalkeepers

<b>19 A. Piantini Avendano</b> 1/1 1/3 1/1	<b>23 M. Cortez Fuenzalida</b> 1/2 0/4 1/1 1/1 2/4 2/5 1/1 3/8	<b>TOTAL</b> 2/3 0/5 1/1 1/1 2/4 3/8 2/2 3/8
--	---	---

### Shots by position



7m penalties	5/5	7m penalties	3/6
Fastbreak	5/9	Fastbreak	5/7
Breakthrough	6/7	Breakthrough	6/9
Long dist.	0/0	Long dist.	0/1

### Shooting statistics

Position	Goals	Sav.	Miss.	Post	Blk.	Total	%
Back (9m)	5	2	2	2	2	13	38
Line (6m)	7	2	0	0	0	9	78
Wing	2	3	1	0	0	6	33
7m penalties	5	0	0	0	0	5	100
Fastbreak	5	2	1	1	0	9	56
Breakthrough	6	1	0	0	0	7	86
<b>Total</b>	<b>30</b>	<b>10</b>	<b>4</b>	<b>3</b>	<b>2</b>	<b>49</b>	<b>61</b>

# Jersey number Tot. Total shooting 6m 6m (line) shooting 9m 9m shooting Wng Wing shooting FB Fastbreak sh. 7m 7m penalty sh.  
 Brk. Breakthrough sh. LD Long distance sh. As. Assists PC Pass clear chance E7 Earned 7m pen. TF Technical faults St. Steals  
 2m 2m punishments C7. Committed 7m E2 Earned 2m pun. YC. Yellow cards R/B Red/Blue cards Blk. Blocks S Starting Line-up



# 26th IHF Women's World Championship

Denmark • Norway • Sweden

President's Cup II, 1. round



Match Team Statistics

Match No. 58

## Chile 30 - 20 Iran

(14 - 6) (16 - 14)

7.12.2023. 13:00

Attendance: 220

Arena Nord

Referees: Yufeng Cheng (CHN) / Yunlei Zhou (CHN)

### Iran

Players		Goals / shots									Attack				Def.		Penalties				TP				
#	Surname and name	S	Tot.	%	9m	6m	Wing	7m	FB	Brk.	LD	As.	PC	E7	E2	TF	St.	C7	Blk	YC	2m	R	B		
2	ZANDI Asra		1/2	50	0/1					1/1			1			1									23:34
4	MERIKH Fatemeh	S	8/18	44	1/9			3/4	2/2	2/3		1	1	4	1	3									55:32
9	RAHMANIAN Setareh	S	0/2	0	0/1		0/1							1		2		1			2				28:56
10	SHAHAHVARI Atieh		0/1	0		0/1						1				2		1							19:13
11	BADVI Mehraban											1				1									4:09
12	KHALILI BEHFAR Fatemeh	S	0/1	0							0/1					2									46:23
17	VATAN PARAST TOOTOONSIZ Mina	S										1	1	1											10:44
20	EIZADGASHB Bahar		2/5	40	0/1		1/1	0/1	1/1	0/1			1				1	1							39:31
22	LAK Haniyeh																								13:25
24	NOROUZI KHORZOUGHJ Hadiseh	S	2/2	100			1/1			1/1		1				1									58:32
27	KIYANIARA Arezou		0/1	0	0/1							1				1									22:44
33	MOHAMMADI OLOGHI Arezoo																								0:12
37	FAGHIHI Zahra	S	0/2	0		0/1			0/1			1							1						16:45
76	KOUDZARIFARAHANI Nastaran	S	4/11	36	0/4	1/1		0/1	1/2	2/3						3	1	1							47:45
88	OSHAHGI Maede		1/1	100					1/1									1	1						21:55
96	RAJABI Sanaz		2/2	100			2/2																		10:40
	Team / bench															1									
	UKUPNO		20/48	42	1/17	1/3	4/5	3/6	5/7	6/9	0/1	7	4	6	1	17	2	5	2	0	2	0	0		

Goalkeepers		Saves / shots								
#	Surname and name	Tot.	%	9m	6m	Wing	7m	FB	Brk.	LD
12	KHALILI BEHFAR Fatemeh	9/33	27	2/6	1/7	3/5	0/2	2/6	1/7	
22	LAK Haniyeh	1/6	17	0/1	1/2		0/2	0/1		
33	MOHAMMADI OLOGHI Arezoo	0/1	0				0/1			
	TOTAL	10/40	25	2/7	2/9	3/5	0/5	3/7	1/7	0/0

Coach: Gholamali Akbarabadi

Number of attacks: 62, Efficiency: 32%, Average Duration: 29.52 seconds

### Attack by type of defense

	Shots	9m	6m	Wing	TF	E7	E2
On def. 6-0	12/33	1/16	1/3	4/5	13	4	0
On def. 4-2	0/1	0/1	0/0	0/0	4	2	1
Fastbreak	5/7				0	0	0

### Defense by type

	Total	9m	6m	Wing	Stl.	C7	2m
Def. 6-0	8/13	4/5	2/4	1/2	0	2	0
Def. 5-1	12/22	1/8	5/5	1/4	2	3	0
Fastbreak	5/9				0	0	2

### Attack with superiority / minority / goalkeeper out

	Attack				Reaction		
	Att.	Eff.	Shots	TF	FB	LD	Tot.
6 on 6	56	34%	19/41	15			
5 on 6	3	0%	0/2	1			
6 on 5	3	33%	1/2	1			

Player superiority / GK out counted at the end of attack (in case it changes during attack)

### Defense with superiority / minority / goalkeeper out

	Attack				Reaction		
	Att.	Eff.	Shots	TF	FB	LD	Tot.
7 on 6 (GK out)	1	0%	0/1	0	0/0	0/1	0/1
6 on 6	54	48%	26/37	17			
6 on 5	5	60%	3/4	1			
5 on 6	3	33%	1/1	2			

Numbers show attacking numbers of opponent. Lower efficiency of opponent means better defense of this team

# Jersey number Tot. Total shooting 6m 6m (line) shooting 9m 9m shooting Wng Wing shooting FB Fastbreak sh. 7m 7m penalty sh.  
 Brk. Breakthrough sh. LD Long distance sh. As. Assists PC Pass clear chance E7 Earned 7m pen. TF Technical faults St. Steals  
 2m 2m punishments C7. Committed 7m E2 Earned 2m pun. YC. Yellow cards R/B Red/Blue cards Blk. Blocks S Starting Line-up



# 26th IHF Women's World Championship

Denmark • Norway • Sweden

President's Cup II, 1. round



## Match Team Statistics

Match No. 58

## Chile 30 - 20 Iran

(14 - 6) (16 - 14)

7.12.2023. 13:00

Attendance: 220

Arena Nord

Referees: Yufeng Cheng (CHN) / Yunlei Zhou (CHN)

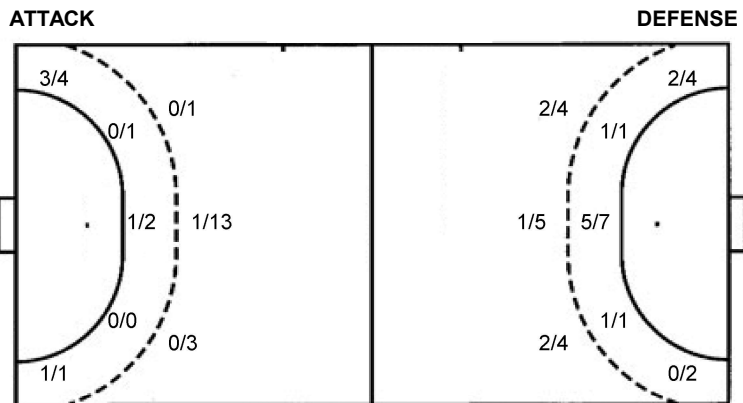
## Shot distribution by player

<b>2 A. Zandi</b> 0/1 1/1	<b>4 F. Merikh</b> 1/2 2/2 2/4 0/1 1/1 2 post 2 miss. 1 block 2/2 lob	<b>9 S. Rahmanian</b> 1 post 0/1 lob	<b>10 A. Shahsavari</b> 0/1 lob	<b>11 M. Badvi</b>	<b>17 M. Vatan Parast Tootoonsiz</b>	<b>20 B. Eizadgashb</b> 0/1 2/2 0/1 1 block
<b>24 H. Norouzi Khorzoughi</b> 1/1 1/1	<b>27 A. Kiyaniara</b> 1 miss.	<b>37 Z. Faghihi</b> 1 post	<b>76 N. Koudzarfarahani</b> 0/1 0/1 1/1 0/1 3/5 0/1 lob	<b>88 M. Oshaghi</b> 1/1	<b>96 S. Rajabi</b> 1/1 1/1	<b>TOTAL</b> 1/3 0/1 0/1 2/4 5/8 0/2 5/8 4 post 3 miss. 2 block 2/5 lob

## Saves distribution goalkeepers

<b>12 F. Khalili Behfar</b> 1/2 0/2 0/3 1/4 1/1 0/1 3/8 1/2 1/7	<b>22 H. Lak</b> 1/2 0/2 0/2	<b>33 A. Mohammadi Ologhi</b> 0/1	<b>TOTAL</b> 1/2 0/2 0/3 1/4 1/1 1/3 3/10 1/2 1/10
--	------------------------------------	--------------------------------------	---

## Shots by position



7m penalties 3/6  
Fastbreak 5/7  
Breakthrough 6/9  
Long dist. 0/1

7m penalties 5/5  
Fastbreak 5/9  
Breakthrough 6/7  
Long dist. 0/0

## Shooting statistics

Position	Goals	Sav.	Miss.	Post	Blk.	Total	%
Back (9m)	1	9	3	2	2	17	6
Line (6m)	1	2	0	0	0	3	33
Wing	4	1	0	0	0	5	80
7m penalties	3	3	0	0	0	6	50
Fastbreak	5	1	0	1	0	7	71
Breakthrough	6	2	0	1	0	9	67
<b>Total</b>	<b>20</b>	<b>18</b>	<b>3</b>	<b>4</b>	<b>2</b>	<b>47</b>	<b>43</b>

# Jersey number Tot. Total shooting 6m 6m (line) shooting 9m 9m shooting Wng Wing shooting FB Fastbreak sh. 7m 7m penalty sh.  
Brk. Breakthrough sh. LD Long distance sh. As. Assists PC Pass clear chance E7 Earned 7m pen. TF Technical faults St. Steals  
2m 2m punishments C7. Committed 7m E2 Earned 2m pun. YC. Yellow cards R/B Red/Blue cards Blk. Blocks S Starting Line-up



# 26th IHF Women's World Championship

Denmark • Norway • Sweden

President's Cup II, 1. round



## Match Team Statistics

Match No. 58

## Chile 30 - 20 Iran

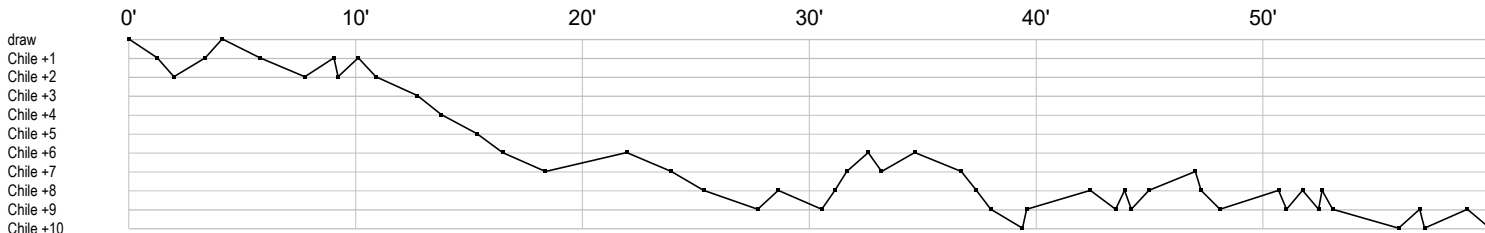
(14 - 6) (16 - 14)

7.12.2023. 13:00

Attendance: 220

Arena Nord

Referees: Yufeng Cheng (CHN) / Yunlei Zhou (CHN)



### Chile



### Iran



In game	<b>g</b> Goal scored	<b>f</b> Missed shot	<b>a</b> Assist	<b>t</b> Technical faults	<b>b</b> Steal
<b>2</b> 2min suspension	<b>e</b> Earned 7m	<b>c</b> Committed 7m	<b>y</b> Yellow card	<b>r</b> Red Card	<b>k</b> Blue card
<b>i</b> Earned 2min.	<b>x</b> Block	<b>4</b> 4min suspension	<b>p</b> Pass for clear chance	<b>s</b> Saved shot	<b>r</b> Received goal