



26th IHF Women's World Championship

Denmark • Norway • Sweden

Group E, 3. round



Match Team Statistics

Match No. 48

Denmark 39 - 23 Romania

(21 - 10) (18 - 13)

5.12.2023. 20:30

Attendance: 10788

Jyske Bank Boxen

Referees: Bojan Lah (SLO) / David Sok (SLO)

Denmark

#	Surname and name	S	Goals / shots								Attack				Def.			Penalties			TP					
			Tot.	%	9m	6m	Wing	7m	FB	Brk.	LD	As.	PC	E7	E2	TF	St.	C7	Blk	YC		2m	R	B		
1	TOFT Sandra	S										3													39:42	
5	IVERSEN Sarah Aaberg											1				1	1	1							32:54	
6	HAGESO Helena Elver		2/2	100	1/1							1				1									10:20	
8	HANSEN Anne Mette	S	4/6	67	1/2			1/1				2	3		1	2	1	1					1		26:41	
10	HEINDAHL Kathrine Brothmann	S	1/1	100		1/1						1				1	1	1	1						32:03	
11	HAUGSTED Line	S	1/3	33	1/3											2							2		29:20	
16	REINHARDT Althea Rebecca																								17:17	
21	HANSEN Andrea Ulrikka Aagot		2/2	100				1/1				1											1		28:58	
23	JORGENSEN Kristina		10/13	77	1/2	2/2	1/2	2/2	2/2	1/2	1/1	2	2			1	1						1		37:38	
25	JENSEN Trine Ostergaard	S	5/6	83				2/2						1	1		1								32:03	
27	BURGAARD Louise Katharina	S	2/2	100		1/1						2	1			1						1	1		22:30	
31	PETERSEN Simone Cathrine		0/1	0								2		1	1	1									13:24	
32	HOJLUND Mie Enggrob		3/4	75	2/2	0/1						1													11:33	
33	FRIIS Emma Cecilie Uhrskov	S	4/7	57		1/1	3/6																		42:54	
34	IVERSEN Rikke		3/4	75		2/3											1	1	2						32:23	
45	SCAGLIONE Julie Mathiesen		2/5	40	2/3		0/1					1													10:20	
	Team / bench																									
	UKUPNO		39/56	70	8/13	7/9	8/13	2/2	6/7	6/10	2/2	17	6	2	3	9	6	7	7	1	3	0	0			

#	Surname and name	Saves / shots								
		Tot.	%	9m	6m	Wing	7m	FB	Brk.	LD
1	TOFT Sandra	12/26	46	5/10	2/6	3/5	0/1	0/1	2/3	
16	REINHARDT Althea Rebecca	11/19	58	2/2	4/6	1/5	4/6			
	TOTAL	23/45	51	7/12	6/12	4/10	4/7	0/1	2/3	0/0

Coach: Jesper Haandbak Jensen

Number of attacks: 64, Efficiency: 61%, Average Duration: 26.11 seconds

Attack by type of defense

	Shots	9m	6m	Wing	TF	E7	E2
On def. 6-0	22/36	5/9	5/7	7/11	7	2	3
On def. 5-1	5/7	2/3	1/1	1/2	2	0	0
Fastbreak	6/7				0	0	0

Defense by type

	Total	9m	6m	Wing	Stl.	C7	2m
Def. 6-0	18/45	5/20	6/12	6/10	6	7	0
Fastbreak	1/2				0	0	3

Attack with superiority / minority / goalkeeper out

	Attack				Reaction		
	Att.	Eff.	Shots	TF	FB	LD	Tot.
7 on 6 (GK out)	1	0%	0/0	1	0/0	0/0	0/0
6 on 6 (GK out)	5	20%	1/3	2	0/0	1/1	1/1
6 on 6	53	66%	35/47	6			
6 on 5	4	50%	2/4	0			
6 on 4	1	100%	1/1	0			

Player superiority / GK out counted at the end of attack (in case it changes during attack)

Defense with superiority / minority / goalkeeper out

	Attack				Reaction		
	Att.	Eff.	Shots	TF	FB	LD	Tot.
7 on 6 (GK out)	4	25%	1/3	1	1/1	1/1	2/2
6 on 6 (GK out)	4	0%	0/3	1	0/0	0/0	0/0
5 on 6 (GK out)	1	100%	1/1	0	0/0	0/0	0/0
6 on 6	49	35%	17/38	11			
6 on 5	7	57%	4/6	1			

Numbers show attacking numbers of opponent. Lower efficiency of opponent means better defense of this team

Jersey number Tot. Total shooting 6m 6m (line) shooting 9m 9m shooting Wng Wing shooting FB Fastbreak sh. 7m 7m penalty sh.
 Brk. Breakthrough sh. LD Long distance sh. As. Assists PC Pass clear chance E7 Earned 7m pen. TF Technical faults St. Steals
 2m 2m punishments C7. Committed 7m E2 Earned 2m pun. YC. Yellow cards R/B Red/Blue cards Blk. Blocks S Starting Line-up



26th IHF Women's World Championship

Denmark • Norway • Sweden

Group E, 3. round



Match Team Statistics

Match No. 48

Denmark 39 - 23 Romania

(21 - 10) (18 - 13)

5.12.2023. 20:30

Attendance: 10788

Jyske Bank Boxen

Referees: Bojan Lah (SLO) / David Sok (SLO)

Shot distribution by player

5 S. Iversen

6 H. Hageso

1/1		1/1

8 A. Hansen

2/2		
		1/1
0/2		

1/1 lob

10 K. Heindahl

1/1		

11 L. Haugsted

1/2		0/1

21 A. Hansen

2/2 lob

23 K. Jorgensen

	1/2	0/1
2/2	1/2	6/6

25 T. Jensen

1/1	0/1	1/1
	1/1	
	1/1	1/1

27 L. Bargaard

1/1		
		1/1

31 S. Petersen

0/1		

32 M. Hojlund

1/1		
		1/1
1/1		

1 post

33 E. Friis

0/1		0/1
1/1	1/1	1/1

1 post 1/1 lob

34 R. Iversen

1/2	1/1	

1/1 lob

45 J. Scaglione

2/2		
0/1		
	0/1	

1 miss.

TOTAL

9/10	1/3	2/4
2/5	2/2	2/3
4/7	3/5	9/9

2 post 1 miss. 5/5 lob

Saves distribution goalkeepers

1 S. Toft

1/2	0/1	2/3
3/6	1/1	0/2
0/4	5/6	0/1

16 A. Reinhardt

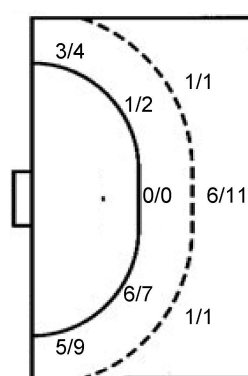
2/3	2/2	2/5
3/5		
1/2	0/1	1/1

TOTAL

3/5	2/3	4/8
6/11	1/1	0/2
1/6	5/7	1/2

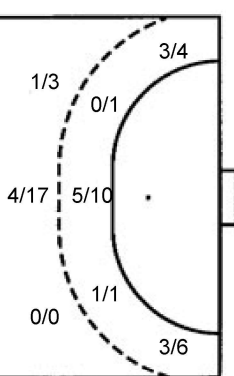
Shots by position

ATTACK



7m penalties 2/2
Fastbreak 6/7
Breakthrough 6/10
Long dist. 2/2

DEFENSE



7m penalties 3/7
Fastbreak 1/2
Breakthrough 1/3
Long dist. 1/2

Shooting statistics

Position	Goals	Sav.	Miss.	Post	Blk.	Total	%
Back (9m)	8	5	0	0	0	13	62
Line (6m)	7	1	0	1	0	9	78
Wing	8	3	1	1	0	13	62
7m penalties	2	0	0	0	0	2	100
Fastbreak	6	1	0	0	0	7	86
Breakthrough	6	4	0	0	0	10	60
Total	37	14	1	2	0	54	69

Jersey number Tot. Total shooting 6m 6m (line) shooting 9m 9m shooting Wng Wing shooting FB Fastbreak sh. 7m 7m penalty sh.
Brk. Breakthrough sh. LD Long distance sh. As. Assists PC Pass clear chance E7 Earned 7m pen. TF Technical faults St. Steals
2m 2m punishments C7. Committed 7m E2 Earned 2m pun. YC. Yellow cards R/B Red/Blue cards Blk. Blocks S Starting Line-up

Handball statistics and livescore by Toma-soft ltd (www.toma-soft.hr)



26th IHF Women's World Championship

Denmark • Norway • Sweden

Group E, 3. round



Match Team Statistics

Match No. 48

Denmark 39 - 23 Romania

(21 - 10) (18 - 13)

5.12.2023. 20:30

Attendance: 10788

Jyske Bank Boxen

Referees: Bojan Lah (SLO) / David Sok (SLO)

Romania

#	Surname and name	S	Goals / shots								Attack				Def.			Penalties				TP			
			Tot.	%	9m	6m	Wing	7m	FB	Brk.	LD	As.	PC	E7	E2	TF	St.	C7	Blk	YC	2m		R	B	
2	DINCA Elena-Nicoleta	S	0/1	0			0/1																		27:45
7	BUCESCHI Eliza-Iulia	S	2/5	40	0/2		1/1	1/2							1		1		2						16:42
12	CIUCA Diana-Cristiana	S																							26:15
13	LASLO Cristina	S	0/3	0	0/3									1	1			1					1		27:14
14	BAZALIU Bianca-Maria		0/2	0	0/2										1			1							5:11
18	BUCUR Daria	S																1					1		14:49
20	DUMANSKA Yuliya																								13:44
21	DINDILIGAN Alexandra		2/2	100			2/2							1		2							1		33:52
22	BADEA Alexandra-Diana		2/3	67			2/3																		31:25
27	OSTASE Lorena-Gabriela		3/8	38		3/8										1	1								39:51
28	LIXANDROIU Maria Diana		5/10	50	3/6			2/3						3	1			4							32:42
30	SERAFICEANU Sonia-Mariana	S	3/5	60		1/1	1/3		1/1					1									2		25:27
70	POPA Andreea- Cristina		2/6	33	1/4					1/1	0/1			4	5	2	1	2							49:11
71	GOGIRLA Alicia-Maria		1/6	17	1/3			0/2		0/1				2	1										30:00
77	PINTEA Crina-Elena	S	3/5	60		2/3			0/1		1/1			1				3					1		29:24
98	HOSU Daciana																								16:28
	Team / bench																								
	UKUPNO		23/56	41	5/20	6/12	6/10	3/7	1/2	1/3	1/2			12	11	7	2	14	3	2	0	1	3	0	0

#	Surname and name	Saves / shots								
		Tot.	%	9m	6m	Wing	7m	FB	Brk.	LD
12	CIUCA Diana-Cristiana	5/22	23	1/4	0/3	2/7	0/1	1/3	1/4	
20	DUMANSKA Yuliya	4/13	31	1/3	0/3	1/3		0/1	2/3	
98	HOSU Daciana	5/15	33	3/6	1/2	0/1	0/1	0/2	1/3	
	TOTAL	14/50	28	5/13	1/8	3/11	0/2	1/6	4/10	0/0

Coach: Constantin -Florentin Pera

Number of attacks: 65, Efficiency: 35%, Average Duration: 29.66 seconds

Attack by type of defense

	Shots	9m	6m	Wing	TF	E7	E2
On def. 6-0	18/45	5/20	6/12	6/10	14	7	2
Fastbreak	1/2				0	0	0

Defense by type

	Total	9m	6m	Wing	Stl.	C7	2m
Def. 6-0	22/36	5/9	5/7	7/11	3	2	0
Def. 5-1	5/7	2/3	1/1	1/2	0	0	0
Fastbreak	6/7				0	0	3

Attack with superiority / minority / goalkeeper out

	Attack				Reaction		
	Att.	Eff.	Shots	TF	FB	LD	Tot.
7 on 6 (GK out)	4	25%	1/3	1	1/1	1/1	2/2
6 on 6 (GK out)	4	0%	0/3	1	0/0	0/0	0/0
5 on 6 (GK out)	1	100%	1/1	0	0/0	0/0	0/0
6 on 6	49	35%	17/38	11			
6 on 5	7	57%	4/6	1			

Player superiority / GK out counted at the end of attack (in case it changes during attack)

Defense with superiority / minority / goalkeeper out

	Attack				Reaction		
	Att.	Eff.	Shots	TF	FB	LD	Tot.
7 on 6 (GK out)	1	0%	0/0	1	0/0	0/0	0/0
6 on 6 (GK out)	5	20%	1/3	2	0/0	1/1	1/1
6 on 6	53	66%	35/47	6			
6 on 5	4	50%	2/4	0			
6 on 4	1	100%	1/1	0			

Numbers show attacking numbers of opponent. Lower efficiency of opponent means better defense of this team

Jersey number Tot. Total shooting 6m 6m (line) shooting 9m 9m shooting Wng Wing shooting FB Fastbreak sh. 7m 7m penalty sh.
 Brk. Breakthrough sh. LD Long distance sh. As. Assists PC Pass clear chance E7 Earned 7m pen. TF Technical faults St. Steals
 2m 2m punishments C7. Committed 7m E2 Earned 2m pun. YC. Yellow cards R/B Red/Blue cards Blk. Blocks S Starting Line-up

Handball statistics and livescore by Toma-soft ltd (www.toma-soft.hr)



26th IHF Women's World Championship

Denmark • Norway • Sweden

Group E, 3. round



Match Team Statistics

Match No. 48

Denmark 39 - 23 Romania

(21 - 10) (18 - 13)

5.12.2023. 20:30

Attendance: 10788

Jyske Bank Boxen

Referees: Bojan Lah (SLO) / David Sok (SLO)

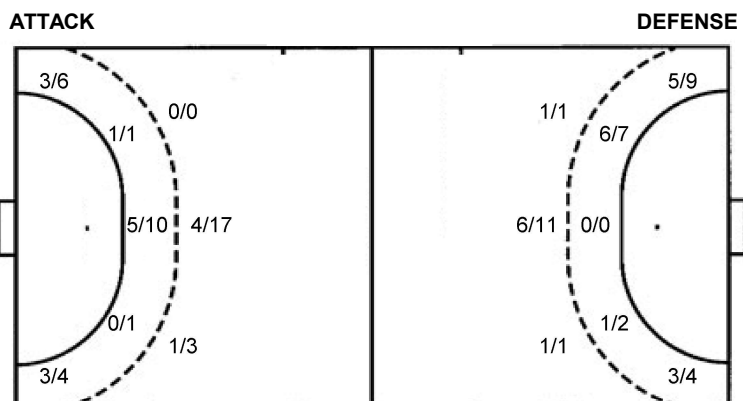
Shot distribution by player

2 E. Dinca 0/1	7 E. Buceschi 0/1 2/2 2 block	13 C. Laslo 0/1 1 miss. 1 block	14 B. Bazaliu 2 block	18 D. Bucur	21 A. Dindiligan 2/2	22 A. Badea 0/1 1/1 1/1
27 L. Ostase 1/2 0/2 0/1 2/2 0/1	28 M. Lixandroiu 0/1 2/4 1/1 1/1 0/1 1/1 1 block	30 S. Seraficeanu 1/1 0/1 1/1	70 A. Popa 0/1 1/1 0/1 0/1 1/1	71 A. Gogirla 1/1 0/1 0/1 0/1	77 C. Pinteia 1/1 1/1 1/1 0/1 1 post	TOTAL 2/5 1/3 4/8 5/11 1/2 2/2 5/6 2/7 1/2 1 post 2 miss. 7 block

Saves distribution goalkeepers

12 D. Ciuca 0/6 1/1 1/3 1/2 1/2 1/3 0/2 0/3	20 Y. Dumanska 0/2 1/1 1/2 0/1 2/2 0/3	98 D. Hosu 1/2 1/1 1/1 0/1 2/3 0/1 0/3	TOTAL 1/10 2/2 2/4 3/5 1/3 3/7 2/5 0/9
---	--	--	--

Shots by position



7m penalties 3/7
Fastbreak 1/2
Breakthrough 1/3
Long dist. 1/2

7m penalties 2/2
Fastbreak 6/7
Breakthrough 6/10
Long dist. 2/2

Shooting statistics

Position	Goals	Sav.	Miss.	Post	Blk.	Total	%
Back (9m)	5	7	1	0	7	20	25
Line (6m)	6	6	0	0	0	12	50
Wing	6	4	0	0	0	10	60
7m penalties	3	4	0	0	0	7	43
Fastbreak	1	0	0	1	0	2	50
Breakthrough	1	2	0	0	0	3	33
Total	22	23	1	1	7	54	41

Jersey number Tot. Total shooting 6m 6m (line) shooting 9m 9m shooting Wng Wing shooting FB Fastbreak sh. 7m 7m penalty sh.
Brk. Breakthrough sh. LD Long distance sh. As. Assists PC Pass clear chance E7 Earned 7m pen. TF Technical faults St. Steals
2m 2m punishments C7. Committed 7m E2 Earned 2m pun. YC. Yellow cards R/B Red/Blue cards Blk. Blocks S Starting Line-up

Handball statistics and livescore by Toma-soft ltd (www.toma-soft.hr)



26th IHF Women's World Championship

Denmark • Norway • Sweden

Group E, 3. round



Match Team Statistics

Match No. 48

Denmark 39 - 23 Romania

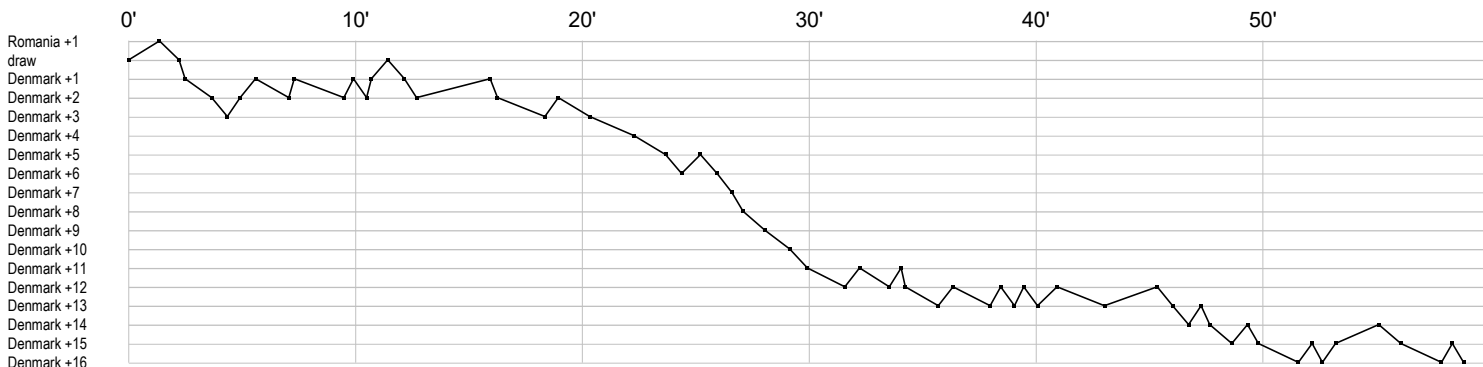
(21 - 10) (18 - 13)

5.12.2023. 20:30

Attendance: 10788

Jyske Bank Boxen

Referees: Bojan Lah (SLO) / David Sok (SLO)



Denmark

1 Toft S	r s s r s r r r r a r s r s r s a s a r s r s s r r s r s
5 Iversen S	c b a x
6 Hageso H	g a g t
8 Hansen A	a t p c2 p p i t b g a g f f g g
10 Heindahl K	ba g x t c
11 Haugsted L	g f t t x f x
16 Reinhardt A	s s r s s r s r s r s r s
21 Hansen A	c g c 2 g a
23 Jorgensen K	p g g g g a g p t f b g g g a f g 2 f g
25 Jensen T	g b g g f e i g g
27 Burgard L	x a t a p y g g a a
31 Petersen S	i e f t a a c
32 Hojlund M	g f a g g
33 Friis E	g g f f f g g
34 Iversen R	x g f c x g b g
45 Scaglione J	g f g f a

Romania

2 Dinca E	f b p
7 Buceschi E	f g a f t t e f
12 Ciuca D	r r r s r r r r s s r s r r r r r r
13 Laslo C	a f p f 2c f t
14 Bazaliu B	f p f t
18 Bucur D	t 2
20 Dumanska Y	r r r r s r r s s r r r
21 Dindiligan A	2c e e g a g
22 Badea A	f g g
27 Ostase L	f g e f f g g i f
28 Lixandroui M	t g f g t a f g g f t g f a t f a
30 Seraficeanu S	g f b g g a b f
70 Popa A	a p p a t e i t f p f f g g a f p a e p
71 Gogirla A	f g p f f f p f e
77 Pintea C	a f y g g t g t f t
98 Hosu D	r s r s r r r r s r sr

In game	g Goal scored	f Missed shot	a Assist	t Technical faults	b Steal
2 2min suspension	e Earned 7m	c Committed 7m	y Yellow card	r Red Card	k Blue card
i Earned 2min.	x Block	4 4min suspension	p Pass for clear chance	s Saved shot	r Received goal