



26th IHF Women's World Championship

Denmark • Norway • Sweden

Group E, 3. round



Match Team Statistics

Match No. 47

Serbia 30 - 16 Chile

(10 - 6) (20 - 10)

5.12.2023. 18:00

Attendance: 7438

Jyske Bank Boxen

Referees: Maali Alenezi (KUW) / Dalal Alnaseem (KUW)

Serbia

#	Surname and name	S	Goals / shots								Attack					Def.			Penalties				TP						
			Tot.	%	9m	6m	Wing	7m	FB	Brk.	LD	As.	PC	E7	E2	TF	St.	C7	Blk	YC	2m	R		B					
1	SIMIĆ Marija																											6:54	
2	RADOSAVLJEVIĆ Sanja	S	4/7	57				2/3	1/1	1/3																		28:22	
3	VELIČKOVIĆ Teodora		2/2	100											2													12:54	
7	VUKAJLOVIĆ Aleksandra		3/6	50			1/1								1													16:18	
11	LANIŠTANIN Marija																												
14	NUKOVIĆ Edita		3/3	100	1/1	1/1																			1	1		26:26	
15	JANJUŠEVIĆ Andela	S	1/3	33			1/2		0/1						3	5		1	3									47:01	
22	JOVOVIĆ Jovana	S	3/4	75	1/1	2/2									10	3	1		4	1								52:28	
25	STAMENIĆ Aleksandra		7/8	88			1/1	4/4		2/3									1	1								32:29	
27	KUBINA Molli														1													22:07	
29	LOVRIĆ Nataša	S	0/1	0			0/1																					20:54	
31	BOJIČIĆ Katarina	S	2/3	67			1/2			1/1																		25:25	
34	RADEVIĆ Dunja		4/6	67				2/4		2/2																		38:14	
36	LAZIĆ Emilija	S	1/4	25			0/1								2	2	1		1									46:24	
92	MILOJEVIĆ Jovana		0/3	0			0/3																					15:08	
99	ČOLIĆ Marija	S													1	1			2									28:56	
	Team / bench																												
	UKUPNO		30/50	60	2/2	7/13	8/12	1/2	6/9	5/11	1/1				20	11	2	1	13	4	1	1	1	3	0	0			

#	Surname and name	Saves / shots								
		Tot.	%	9m	6m	Wing	7m	FB	Brk.	LD
1	SIMIĆ Marija	2/4	50	1/1		0/2			1/1	
27	KUBINA Molli	3/9	33	2/3	1/2	0/3			0/1	
99	ČOLIĆ Marija	4/8	50	3/5		0/1	0/1	1/1		
	TOTAL	9/21	43	6/9	1/2	0/6	0/1	1/1	1/2	0/0

Coach: Uroš Bregar

Number of attacks: 62, Efficiency: 48%, Average Duration: 19.13 seconds

Attack by type of defense

	Shots	9m	6m	Wing	TF	E7	E2
On def. 6-0	19/29	2/2	6/10	6/9	12	1	1
On def. 5-1	3/6	0/0	1/2	2/2	1	1	0
Fastbreak	6/9				0	0	0

Defense by type

	Total	9m	6m	Wing	Stl.	C7	2m
Def. 6-0	11/23	3/13	1/2	6/6	4	1	0
Fastbreak	0/1				0	0	3

Attack with superiority / minority / goalkeeper out

	Attack				Reaction		
	Att.	Eff.	Shots	TF	FB	LD	Tot.
6 on 6 (GK out)	5	0%	0/2	3	0/0	2/2	2/2
6 on 6	52	56%	29/44	8			
6 on 5	3	33%	1/3	0			
5 on 6	2	0%	0/0	2			

Player superiority / GK out counted at the end of attack (in case it changes during attack)

Defense with superiority / minority / goalkeeper out

	Attack				Reaction		
	Att.	Eff.	Shots	TF	FB	LD	Tot.
7 on 6 (GK out)	2	100%	2/2	0	0/0	1/1	1/1
6 on 6	50	18%	9/19	31			
5 on 6	3	0%	0/1	2			
6 on 5	8	63%	5/6	2			

Numbers show attacking numbers of opponent. Lower efficiency of opponent means better defense of this team

Jersey number Tot. Total shooting 6m 6m (line) shooting 9m 9m shooting Wng Wing shooting FB Fastbreak sh. 7m 7m penalty sh.
 Brk. Breakthrough sh. LD Long distance sh. As. Assists PC Pass clear chance E7 Earned 7m pen. TF Technical faults St. Steals
 2m 2m punishments C7. Committed 7m E2 Earned 2m pun. YC. Yellow cards R/B Red/Blue cards Blk. Blocks S Starting Line-up



26th IHF Women's World Championship

Denmark • Norway • Sweden

Group E, 3. round



Match Team Statistics

Match No. 47

Serbia 30 - 16 Chile

(10 - 6) (20 - 10)

5.12.2023. 18:00

Attendance: 7438

Jyske Bank Boxen

Referees: Maali Alenezi (KUW) / Dalal Alnaseem (KUW)

Shot distribution by player

2 S. Radosavljević

	1/1	
1/1		

3 post 2/2 lob

3 T. Veličković

		1/1
	1/1	

7 A. Vukajlović

1/1		1/2
1/2		

1 post

11 M. Laništanin

14 E. Nuković

1/1		
	1/1	
		1/1

15 A. Janjušević

		0/1
		1/1

1 post

22 J. Jovović

1/1		1/1
	1/2	

25 A. Stamenić

3/3	1/1	
1/1		

1 post 2/2 lob

29 N. Lovrić

		0/1

31 K. Bojičić

		0/1
1/1		1/1

34 D. Radević

		1/1
	2/2	

1 post 1 miss. 1/1 lob

36 E. Lazić

0/1		
0/1	0/1	1/1

92 J. Milojević

0/1	0/1	
0/1		

TOTAL

5/5	2/2	2/3
3/5	1/2	2/5
2/5	4/6	4/4

7 post 1 miss. 5/5 lob

Saves distribution goalkeepers

1 M. Simić

	0/1	
1/1	1/1	0/1

27 M. Kubina

0/1		1/2
0/1		
1/1	0/1	1/3

99 M. Čolić

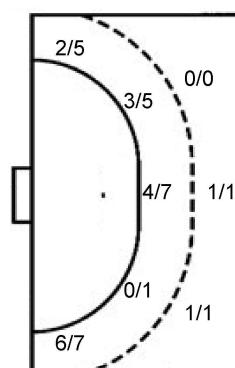
		0/1
1/2		1/2
		1/2

TOTAL

0/1	0/1	1/3
1/3		1/2
2/2	1/2	2/6

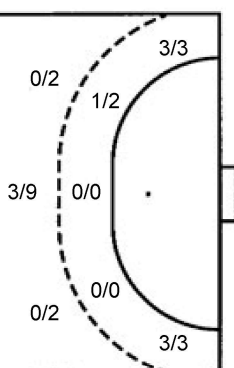
Shots by position

ATTACK



7m penalties	1/2
Fastbreak	6/9
Breakthrough	5/11
Long dist.	1/1

DEFENSE



7m penalties	1/1
Fastbreak	0/1
Breakthrough	1/2
Long dist.	4/4

Shooting statistics

Position	Goals	Sav.	Miss.	Post	Blk.	Total	%
Back (9m)	2	0	0	0	0	2	100
Line (6m)	7	6	0	0	0	13	54
Wing	8	1	1	2	0	12	67
7m penalties	1	0	0	1	0	2	50
Fastbreak	6	0	0	3	0	9	67
Breakthrough	5	5	0	1	0	11	45
Total	29	12	1	7	0	49	59

Jersey number Tot. Total shooting 6m 6m (line) shooting 9m 9m shooting Wng Wing shooting FB Fastbreak sh. 7m 7m penalty sh.
 Brk. Breakthrough sh. LD Long distance sh. As. Assists PC Pass clear chance E7 Earned 7m pen. TF Technical faults St. Steals
 2m 2m punishments C7. Committed 7m E2 Earned 2m pun. YC. Yellow cards R/B Red/Blue cards Blk. Blocks S Starting Line-up

Handball statistics and livescore by Toma-soft ltd (www.toma-soft.hr)



26th IHF Women's World Championship

Denmark • Norway • Sweden

Group E, 3. round



Match Team Statistics

Match No. 47

Serbia 30 - 16 Chile

(10 - 6) (20 - 10)

5.12.2023. 18:00

Attendance: 7438

Jyske Bank Boxen

Referees: Maali Alenezi (KUW) / Dalal Alnaseem (KUW)

Chile

Players		Goals / shots										Attack				Def.			Penalties				TP		
#	Surname and name	S	Tot.	%	9m	6m	Wing	7m	FB	Brk.	LD	As.	PC	E7	E2	TF	St.	C7	Blk	YC	2m	R	B		
4	PAUL Constanza	S	3/5	60	1/3		2/2										3								41:30
5	RAMIREZ MUNOZ Romina Antonia																								0:01
6	LOVERA SALAS Valeska Andrea	S	2/6	33	1/5			1/1				1					8	1						1	42:02
7	MÜLLER RUIZ Gabriela Belén		1/1	100			1/1											1	1						31:02
8	ARAYA SALFATE Josefa Ignacia		1/2	50	1/2							1	1		3	8	1								37:25
9	GALVEZ Catalina																4	1							14:44
10	PARRA PARRA Francisca Andrea	S	1/3	33	0/1				0/1	1/1		2					4	1	1						46:02
14	MORENO CORDOVA Catalina Francisca																4	1							28:48
16	TORRES LARA Alicia Ignacia	S	2/3	67		1/2					1/1			1											34:08
18	CORREA VERGARA Maria Elena		0/1	0						0/1		1													14:21
19	PIANTINI AVENDANO Antonella Valentina																								0:14
22	ALVAREZ GYLLEN Maura Andrea	S	4/6	67	0/2		3/3				1/1		1										1		52:47
23	CORTEZ FUENZALIDA Madeleine Noelia	S	2/2	100							2/2														58:36
27	ZAVALA REYES Francisca Elena	S															1								4:59
28	CARRASCO Valeria											1	1				3								13:21
Team / bench																									
UKUPNO			16/29	55	3/13	1/2	6/6	1/1	0/1	1/2	4/4	6	3	1	3	35	7	2	0	0	2	0	0		

Goalkeepers		Saves / shots									
#	Surname and name	Tot.	%	9m	6m	Wing	7m	FB	Brk.	LD	
19	PIANTINI AVENDANO Antonella Valentina										
23	CORTEZ FUENZALIDA Madeleine Noelia	12/41	29	0/2	6/13	1/9	0/1	0/6	5/10		
TOTAL		12/41	29	0/2	6/13	1/9	0/1	1/6	5/10	0/0	

Coach: Felipe Barrientos

Number of attacks: 63, Efficiency: 25%, Average Duration: 38.22 seconds

Attack by type of defense

	Shots	9m	6m	Wing	TF	E7	E2
On def. 6-0	11/23	3/13	1/2	6/6	35	1	3
Fastbreak	0/1				0	0	0

Defense by type

	Total	9m	6m	Wing	Stl.	C7	2m
Def. 6-0	19/29	2/2	6/10	6/9	7	1	0
Def. 5-1	3/6	0/0	1/2	2/2	0	1	0
Fastbreak	6/9				0	0	2

Attack with superiority / minority / goalkeeper out

	Attack				Reaction		
	Att.	Eff.	Shots	TF	FB	LD	Tot.
7 on 6 (GK out)	2	100%	2/2	0	0/0	1/1	1/1
6 on 6	50	18%	9/19	31			
5 on 6	3	0%	0/1	2			
6 on 5	8	63%	5/6	2			

Player superiority / GK out counted at the end of attack (in case it changes during attack)

Defense with superiority / minority / goalkeeper out

	Attack				Reaction		
	Att.	Eff.	Shots	TF	FB	LD	Tot.
6 on 6 (GK out)	5	0%	0/2	3	0/0	2/2	2/2
6 on 6	52	56%	29/44	8			
6 on 5	3	33%	1/3	0			
5 on 6	2	0%	0/0	2			

Numbers show attacking numbers of opponent. Lower efficiency of opponent means better defense of this team

Jersey number Tot. Total shooting 6m 6m (line) shooting 9m 9m shooting Wng Wing shooting FB Fastbreak sh. 7m 7m penalty sh.
 Brk. Breakthrough sh. LD Long distance sh. As. Assists PC Pass clear chance E7 Earned 7m pen. TF Technical faults St. Steals
 2m 2m punishments C7. Committed 7m E2 Earned 2m pun. YC. Yellow cards R/B Red/Blue cards Blk. Blocks S Starting Line-up

Handball statistics and livescore by Toma-soft ltd (www.toma-soft.hr)



26th IHF Women's World Championship

Denmark • Norway • Sweden

Group E, 3. round



Match Team Statistics

Match No. 47

Serbia 30 - 16 Chile

(10 - 6) (20 - 10)

5.12.2023. 18:00

Attendance: 7438

Jyske Bank Boxen

Referees: Maali Alenezi (KUW) / Dalal Alnaseem (KUW)

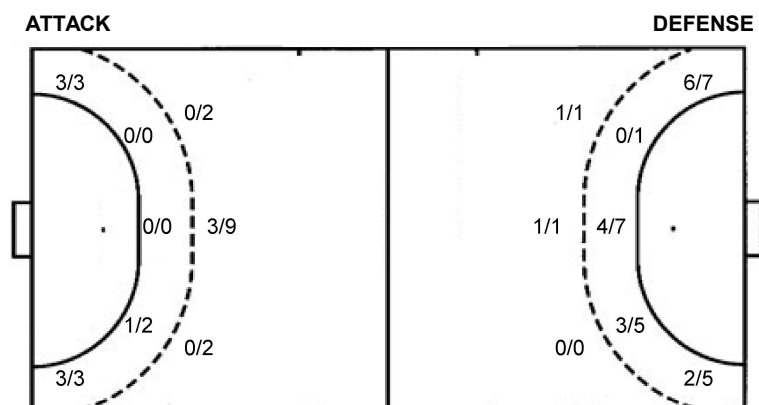
Shot distribution by player

4 C. Paul 1 miss. 3/4	5 R. Ramirez Munoz	6 V. Lovera Salas 1 block 0/1 1/1 1/2	7 G. Müller Ruiz 1/1	8 J. Araya Salfate 1/1 0/1	9 C. Galvez	10 F. Parra Parra 1 miss. 0/1 lob 1/1
14 C. Moreno Córdoba	16 A. Torres Lara 0/1 1/1 1/1	18 M. Correa Vergara 0/1	22 M. Álvarez Gyllen 1 miss. 1/1 1/1 1/2 1/1	27 F. Zavala Reyes	28 V. Carrasco	TOTAL 1/1 1/1 2/3 2/3 1/2 1/3 1/2 5/7 3 miss. 1 block 0/1 lob

Saves distribution goalkeepers

19 A. Piantini Avendano	23 M. Cortez Fuenzalida 0/5 0/2 1/3 2/5 1/1 3/5 3/5 2/6 0/4	TOTAL 0/5 0/2 1/3 2/5 1/1 3/5 3/5 2/6 0/4
--------------------------------	---	---

Shots by position



7m penalties 1/1
Fastbreak 0/1
Breakthrough 1/2
Long dist. 4/4

7m penalties 1/2
Fastbreak 6/9
Breakthrough 5/11
Long dist. 1/1

Shooting statistics

Position	Goals	Sav.	Miss.	Post	Blk.	Total	%
Back (9m)	3	6	3	0	1	13	23
Line (6m)	1	1	0	0	0	2	50
Wing	6	0	0	0	0	6	100
7m penalties	1	0	0	0	0	1	100
Fastbreak	0	1	0	0	0	1	0
Breakthrough	1	1	0	0	0	2	50
Total	12	9	3	0	1	25	48

Jersey number Tot. Total shooting 6m 6m (line) shooting 9m 9m shooting Wng Wing shooting FB Fastbreak sh. 7m 7m penalty sh.
Brk. Breakthrough sh. LD Long distance sh. As. Assists PC Pass clear chance E7 Earned 7m pen. TF Technical faults St. Steals
2m 2m punishments C7. Committed 7m E2 Earned 2m pun. YC. Yellow cards R/B Red/Blue cards Blk. Blocks S Starting Line-up

Handball statistics and livescore by Toma-soft ltd (www.toma-soft.hr)

