



26th IHF Women's World Championship

Denmark • Norway • Sweden

Group A, 3. round



Match Team Statistics

Match No. 46

Sweden 22 - 17 Croatia

(9 - 7) (13 - 10)

5.12.2023. 20:30

Attendance: 8538

Scandinavian

Referees: Tanja Kuttler (GER) / Maike Merz (GER)

Shot distribution by player

3 N. Koppang

0/1		

4 O. Mellegard

1/1		
1/1		

7 L. Blohm

		1/1
1/1		0/1

8 J. Roberts

0/3	0/2	
		2/2

10 M. Lundström

		1/1
2/2		0/1

17 N. Dano

0/1		

1 miss.

19 A. Lagerquist

23 E. Lindqvist

0/1		
1/1		0/1

1 miss.

24 N. Hagman

	1/1	0/1
		1/1
2/2		1/1

29 K. Thorleifsdottir

2 block

35 S. Hvenfelt

		1/1

38 E. Hansson

1 miss.

42 J. Carlson

1/1	2/2	1/1
1/2		
	1/1	

1 post

54 T. Axner

0/1		

2 post

TOTAL

1/2	3/3	2/3
2/8	0/2	2/2
7/8	1/1	4/7

3 post 3 miss. 2 block

Saves distribution goalkeepers

1 J. Bundsen

21 E. Eriksson

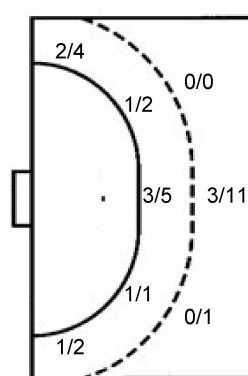
0/2		1/3
3/6	3/3	2/3
4/6	0/1	2/7

TOTAL

0/2		1/3
3/6	3/3	2/3
4/6	0/1	2/7

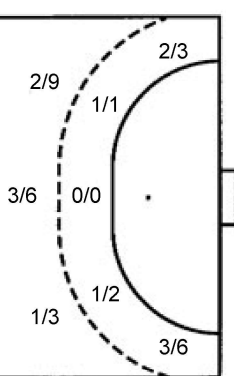
Shots by position

ATTACK



7m penalties	4/4
Fastbreak	4/5
Breakthrough	3/9
Long dist.	0/0

DEFENSE



7m penalties	1/2
Fastbreak	1/2
Breakthrough	2/3
Long dist.	0/0

Shooting statistics

Position	Goals	Sav.	Miss.	Post	Blk.	Total	%
Back (9m)	3	4	1	2	2	12	25
Line (6m)	5	3	0	0	0	8	63
Wing	3	2	1	0	0	6	50
7m penalties	4	0	0	0	0	4	100
Fastbreak	4	1	0	0	0	5	80
Breakthrough	3	4	1	1	0	9	33
Total	22	14	3	3	2	44	50

Jersey number Tot. Total shooting 6m 6m (line) shooting 9m 9m shooting Wng Wing shooting FB Fastbreak sh. 7m 7m penalty sh.
 Brk. Breakthrough sh. LD Long distance sh. As. Assists PC Pass clear chance E7 Earned 7m pen. TF Technical faults St. Steals
 2m 2m punishments C7. Committed 7m E2 Earned 2m pun. YC. Yellow cards R/B Red/Blue cards Blk. Blocks S Starting Line-up

Handball statistics and livescore by Toma-soft ltd (www.toma-soft.hr)



26th IHF Women's World Championship

Denmark • Norway • Sweden

Group A, 3. round



Match Team Statistics

Match No. 46

Sweden 22 - 17 Croatia

(9 - 7) (13 - 10)

5.12.2023. 20:30

Attendance: 8538

Scandinaviu

Referees: Tanja Kuttler (GER) / Maike Merz (GER)

Croatia

#	Surname and name	S	Goals / shots								Attack					Def.			Penalties			TP		
			Tot.	%	9m	6m	Wing	7m	FB	Brk.	LD	As.	PC	E7	E2	TF	St.	C7	Blk	YC	2m		R	B
1	BEŠEN Lucija															1								2:49
2	ZADRAVEC Nikolina	S	0/2	0			0/2									1		1						45:51
3	POSAVEC Paula																							
6	ŠENVALD Sara	S														2		1					1	25:50
8	POSAVEC Stela		0/1	0												1								15:02
9	MICIJEVIC Camila	S	1/5	20	1/5											2						1		22:33
10	MILOSAVLJEVIĆ Dejana	S	2/2	100	1/1											2	2	1	1		1	1		50:17
17	JEŽIĆ Katarina	S	1/1	100		1/1																		33:07
25	BURIĆ Lara		2/3	67			2/3									1								14:30
26	BRKIC Mia																							14:33
28	ŠIMARA Andrea	S	5/8	63	0/1	1/1	3/4		1/2							1	1							58:49
38	BARIŠIĆ Tina		1/6	17	1/5			0/1														1		21:09
43	BIRTIĆ Klara		1/2	50	1/2										2			1	4		1			29:00
77	BLAŽEVIĆ Valentina		3/5	60	1/2	0/1		1/1		1/1					1									24:40
88	PRKAČIN Kristina		1/2	50	1/2										1									9:01
91	PIJEVIĆ Tea	S													1	1			1	1				52:49
	Team / bench															1								
	UKUPNO		17/37	46	6/18	2/3	5/9	1/2	1/2	2/3	0/0		7	4	2	3	18	4	4	1	0	4	0	0

#	Surname and name	Saves / shots								
		Tot.	%	9m	6m	Wing	7m	FB	Brk.	LD
1	BEŠEN Lucija	0/2	0				0/1	0/1		
91	PIJEVIĆ Tea	13/33	39	4/7	3/8	1/4	0/3	1/4	4/7	
	TOTAL	13/35	37	4/7	3/8	1/4	0/4	1/5	4/7	0/0

Coach: Ivica Obrvan

Number of attacks: 55, Efficiency: 31%, Average Duration: 35.85 seconds

Attack by type of defense

	Shots	9m	6m	Wing	TF	E7	E2
On def. 6-0	15/33	6/18	2/3	5/9	18	2	3
Fastbreak	1/2				0	0	0

Defense by type

	Total	9m	6m	Wing	Stl.	C7	2m
Def. 6-0	13/34	3/12	5/8	2/5	4	4	0
Fastbreak	4/5				0	0	4

Attack with superiority / minority / goalkeeper out

	Attack				Reaction		
	Att.	Eff.	Shots	TF	FB	LD	Tot.
7 on 6 (GK out)	1	0%	0/1	0	0/0	0/0	0/0
6 on 6 (GK out)	5	60%	3/4	1	0/0	0/0	0/0
6 on 6	42	26%	11/26	16			
5 on 6	1	0%	0/1	0			
6 on 5	6	50%	3/5	1			

Player superiority / GK out counted at the end of attack (in case it changes during attack)

Defense with superiority / minority / goalkeeper out

	Attack				Reaction		
	Att.	Eff.	Shots	TF	FB	LD	Tot.
6 on 6 (GK out)	4	25%	1/3	1	1/1	0/0	1/1
6 on 5 (GK out)	1	100%	1/1	0	0/0	0/0	0/0
6 on 6	43	37%	16/32	11			
6 on 5	6	67%	4/5	1			

Numbers show attacking numbers of opponent. Lower efficiency of opponent means better defense of this team

Jersey number Tot. Total shooting 6m 6m (line) shooting 9m 9m shooting Wng Wing shooting FB Fastbreak sh. 7m 7m penalty sh.
 Brk. Breakthrough sh. LD Long distance sh. As. Assists PC Pass clear chance E7 Earned 7m pen. TF Technical faults St. Steals
 2m 2m punishments C7. Committed 7m E2 Earned 2m pun. YC. Yellow cards R/B Red/Blue cards Blk. Blocks S Starting Line-up



26th IHF Women's World Championship

Denmark • Norway • Sweden

Group A, 3. round



Match Team Statistics

Match No. 46

Sweden 22 - 17 Croatia

(9 - 7) (13 - 10)

5.12.2023. 20:30

Attendance: 8538

Scandinadium

Referees: Tanja Kuttler (GER) / Maike Merz (GER)

Shot distribution by player

2 N. Zadavec	3 P. Posavec	6 S. Šenvald	8 S. Posavec	9 Č. Mičijević	10 D. Milosavljević	17 K. Ježić
0/1			0/1	1/1		
				0/1	1/1	
				1 post		1/1
25 L. Burić	26 M. Brkic	28 A. Šimara	38 T. Barišić	43 K. Birtić	77 V. Blažević	88 K. Prkačin
2/2		1/1	0/2			
		1/1	0/1			1/1
		0/1		1/1	1/2	
		1 post	1 post 1 block	1 post		0/1

TOTAL

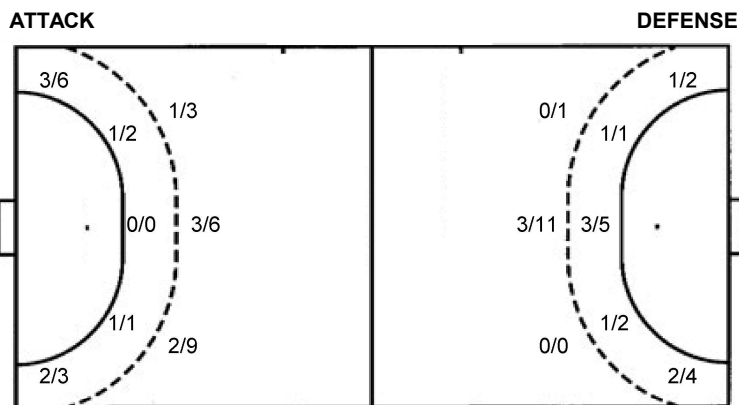
2/2		2/3
3/6	1/4	1/3
2/6	1/1	5/7

4 post 1 block

Saves distribution goalkeepers

1 L. Bešen	91 T. Pijević	TOTAL
0/1	1/2	1/2
	0/2	0/3
	0/2	0/2
	2/2	2/2
	0/1	0/1
0/1	3/6	3/7

Shots by position



7m penalties 1/2
Fastbreak 1/2
Breakthrough 2/3
Long dist. 0/0

7m penalties 4/4
Fastbreak 4/5
Breakthrough 3/9
Long dist. 0/0

Shooting statistics

Position	Goals	Sav.	Miss.	Post	Blk.	Total	%
Back (9m)	6	9	0	2	1	18	33
Line (6m)	2	1	0	0	0	3	67
Wing	5	4	0	0	0	9	56
7m penalties	1	0	0	1	0	2	50
Fastbreak	1	0	0	1	0	2	50
Breakthrough	2	1	0	0	0	3	67
Total	17	15	0	4	1	37	46

Jersey number Tot. Total shooting 6m 6m (line) shooting 9m 9m shooting Wng Wing shooting FB Fastbreak sh. 7m 7m penalty sh.
Brk. Breakthrough sh. LD Long distance sh. As. Assists PC Pass clear chance E7 Earned 7m pen. TF Technical faults St. Steals
2m 2m punishments C7. Committed 7m E2 Earned 2m pun. YC. Yellow cards R/B Red/Blue cards Blk. Blocks S Starting Line-up

Handball statistics and livescore by Toma-soft ltd (www.toma-soft.hr)

