



26th IHF Women's World Championship

Denmark • Norway • Sweden

Group A, 3. round



Match Team Statistics

Match No. 45

P.R. of China 15 - 22 Senegal

(9 - 9) (6 - 13)

5.12.2023. 18:00

Attendance: 3714

Scandinaviu

Referees: Georgi Doychinov (BUL) / Yulian Goretsov (BUL)

P.R. of China

Players		Goals / shots										Attack					Def.			Penalties				TP
#	Surname and name	S	Tot.	%	9m	6m	Wing	7m	FB	Brk.	LD	As.	PC	E7	E2	TF	St.	C7	Blk	YC	2m	R	B	
1	LU Chang	S																						29:29
5	WANG Jiayi															1								1:54
9	JIANG Yishan																							6:00
11	LIU Chan	S	2/5	40	2/5							1	3			8	1							43:10
12	LI Xiaoqing	S	1/4	25	1/1			0/1		0/2		2	1				1				2			45:21
13	ZHAO Xinyao		3/4	75			3/4									1	1							37:47
14	ZHOU Mengxue		3/4	75	1/2					2/2		1	1	1		3								27:38
17	HU Yunuo											1												27:36
18	WEI Nana																	1						5:16
21	ZHANG Guisi		1/1	100					1/1															11:12
22	MA Jie																							
23	ZHUANG Hongyan	S	1/3	33			1/3									2								59:14
27	GONG Lei	S	0/1	0		0/1														1				44:55
28	LIU Xuedan															1								
34	JIN Mengqing	S	4/6	67	2/3					2/3			2			7	1	1						58:11
53	LIU Yuting	S	0/1	0			0/1									1	2							22:17
	Team / bench																							
	UKUPNO		15/29	52	6/11	0/1	4/8	0/1	1/1	4/7	0/0	5	7	1	0	24	6	2	0	1	2	0	0	

Goalkeepers		Saves / shots									
#	Surname and name	Tot.	%	9m	6m	Wing	7m	FB	Brk.	LD	
1	LU Chang	2/12	17	1/3	1/4	0/1	0/1	0/1	0/2		
17	HU Yunuo	3/14	21	0/4	0/2	1/3	0/1		2/4		
	TOTAL	5/26	19	1/7	1/6	1/4	0/2	0/1	2/6	0/0	

Coach: Yongli Zheng

Number of attacks: 53, Efficiency: 28%, Average Duration: 28.87 seconds

Attack by type of defense

	Shots	9m	6m	Wing	TF	E7	E2
On def. 6-0	13/24	6/11	0/1	4/7	23	1	0
On def. 5-1	1/3	0/0	0/0	0/1	1	0	0
Fastbreak	1/1				0	0	0

Attack with superiority / minority / goalkeeper out

	Attack				Reaction		
	Att.	Eff.	Shots	TF	FB	LD	Tot.
7 on 6 (GK out)	2	0%	0/0	2	0/0	1/1	1/1
6 on 6 (GK out)	1	0%	0/1	0	0/0	0/0	0/0
6 on 6	49	29%	14/27	22			
5 on 6	1	100%	1/1	0			

Player superiority / GK out counted at the end of attack (in case it changes during attack)

Defense by type

	Total	9m	6m	Wing	Stl.	C7	2m
Def. 6-0	11/17	4/7	3/3	2/4	2	0	0
Def. 5-1	5/11	2/2	1/4	0/1	4	2	0
Def. 3-3	1/2	0/0	1/1	0/0	0	0	0
Def. press.	0/1	0/1	0/0	0/0	0	0	0
Fastbreak	1/2				0	0	2

Defense with superiority / minority / goalkeeper out

	Attack				Reaction		
	Att.	Eff.	Shots	TF	FB	LD	Tot.
6 on 6	49	39%	19/32	17			
6 on 5	4	75%	3/4	0			

Numbers show attacking numbers of opponent. Lower efficiency of opponent means better defense of this team

Jersey number Tot. Total shooting 6m 6m (line) shooting 9m 9m shooting Wng Wing shooting FB Fastbreak sh. 7m 7m penalty sh.
 Brk. Breakthrough sh. LD Long distance sh. As. Assists PC Pass clear chance E7 Earned 7m pen. TF Technical faults St. Steals
 2m 2m punishments C7. Committed 7m E2 Earned 2m pun. YC. Yellow cards R/B Red/Blue cards Blk. Blocks S Starting Line-up

Handball statistics and livescore by Toma-soft ltd (www.toma-soft.hr)



26th IHF Women's World Championship

Denmark • Norway • Sweden

Group A, 3. round



Match Team Statistics

Match No. 45

P.R. of China 15 - 22 Senegal

(9 - 9) (6 - 13)

5.12.2023. 18:00

Attendance: 3714

Scandinaviu

Referees: Georgi Doychinov (BUL) / Yulian Goretsov (BUL)

Shot distribution by player

5 J. Wang

9 Y. Jiang

11 C. Liu

		1/1
0/1	1/1	0/1

1 block

12 X. Li

		0/1
		1/1

2 post

13 X. Zhao

		1/1
		1/1

1 post 1/1 lob

14 M. Zhou

		1/1
2/2		

1 post

18 N. Wei

21 G. Zhang

		1/1

22 J. Ma

23 H. Zhuang

1/1		
0/1		

1 post

27 L. Gong

		0/1

28 X. Liu

34 M. Jin

		1/1
1/1		
1/1	0/1	1/1

1 miss.

53 Y. Liu

0/1		

TOTAL

1/1		5/5
1/3		1/3
3/4	1/2	2/3

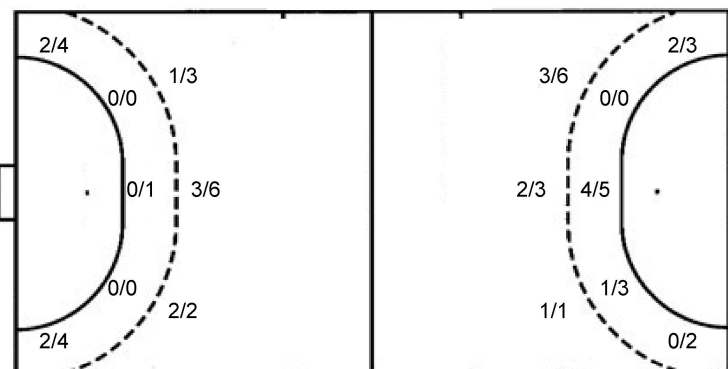
5 post 1 miss. 1 block 1/1 lob

Saves distribution goalkeepers

1 C. Lu <table><tr><td>0/2</td><td></td><td>0/1</td></tr><tr><td>0/3</td><td>0/1</td><td>1/1</td></tr><tr><td>1/2</td><td></td><td>0/2</td></tr></table>	0/2		0/1	0/3	0/1	1/1	1/2		0/2	17 Y. Hu <table><tr><td>0/1</td><td></td><td>0/1</td></tr><tr><td>2/4</td><td></td><td>0/2</td></tr><tr><td>0/1</td><td>1/2</td><td>0/3</td></tr></table>	0/1		0/1	2/4		0/2	0/1	1/2	0/3	TOTAL <table><tr><td>0/3</td><td></td><td>0/2</td></tr><tr><td>2/7</td><td>0/1</td><td>1/3</td></tr><tr><td>1/3</td><td>1/2</td><td>0/5</td></tr></table>	0/3		0/2	2/7	0/1	1/3	1/3	1/2	0/5
0/2		0/1																											
0/3	0/1	1/1																											
1/2		0/2																											
0/1		0/1																											
2/4		0/2																											
0/1	1/2	0/3																											
0/3		0/2																											
2/7	0/1	1/3																											
1/3	1/2	0/5																											

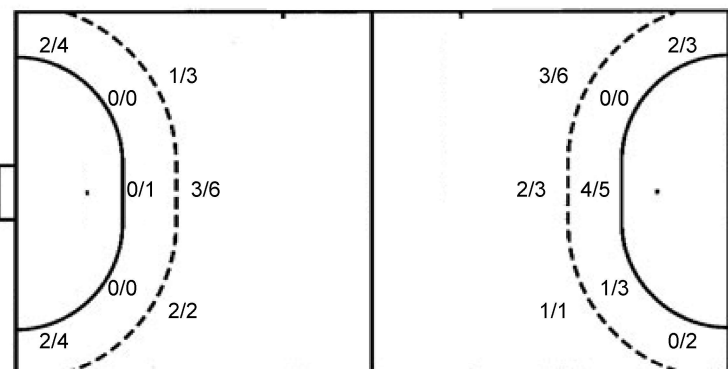
Shots by position

ATTACK



7m penalties 0/1
Fastbreak 1/1
Breakthrough 4/7
Long dist. 0/0

DEFENSE



7m penalties 2/2
Fastbreak 1/2
Breakthrough 4/8
Long dist. 1/1

Shooting statistics

Position	Goals	Sav.	Miss.	Post	Blk.	Total	%
Back (9m)	6	2	1	1	1	11	55
Line (6m)	0	1	0	0	0	1	0
Wing	4	2	0	2	0	8	50
7m penalties	0	0	0	1	0	1	0
Fastbreak	1	0	0	0	0	1	100
Breakthrough	4	2	0	1	0	7	57
Total	15	7	1	5	1	29	52

#	Jersey number	Tot.	Total shooting	6m	6m (line) shooting	9m	9m shooting	Wng	Wing shooting	FB	Fastbreak sh.	7m	7m penalty sh.
Brk.	Breakthrough sh.	LD	Long distance sh.	As.	Assists	PC	Pass clear chance	E7	Earned 7m pen.	TF	Technical faults	St.	Steals
2m	2m punishments	C7.	Committed 7m	E2	Earned 2m pun.	YC.	Yellow cards	R/B	Red/Blue cards	Blk.	Blocks	S	Starting Line-up

Handball statistics and livescore by Toma-soft ltd (www.toma-soft.hr)



26th IHF Women's World Championship

Denmark • Norway • Sweden

Group A, 3. round



Match Team Statistics

Match No. 45

P.R. of China 15 - 22 Senegal

(9 - 9) (6 - 13)

5.12.2023. 18:00

Attendance: 3714

Scandinadium

Referees: Georgi Doychinov (BUL) / Yulian Goretsov (BUL)

Senegal

Players		Goals / shots										Attack					Def.			Penalties				TP
#	Surname and name	S	Tot.	%	9m	6m	Wing	7m	FB	Brk.	LD	As.	PC	E7	E2	TF	St.	C7	Blk	YC	2m	R	B	
1	SALL Fama																							1:39
7	CAMARA Doungou		1/3	33	1/2	0/1						1	1			5								38:16
10	CISSOKHO Aminata		3/3	100		1/1	1/1		1/1						1		1	1						39:15
13	SAGNA Soukeina	S	8/10	80	4/4			2/2		1/3	1/1	5	3			5								47:11
14	KEITA Fanta	S	3/6	50	1/3					2/3		1	1	1		1	1							40:06
15	NDIAYE Hawa Ramatou	S													1	1								44:04
16	TOUBISSA ELBECO Justicia	S											1											58:21
19	SECK Khady																							1:04
21	DIAWARA Mathita																							
27	SY Dienaba	S	3/4	75			2/3			1/1			1			4	2							51:26
28	KAMDOP Laura																							
31	FALL Marie	S	4/6	67		4/6								1			2		1					40:48
44	DAPINA Raissa	S	0/3	0			0/2		0/1			1				1	2							54:24
55	SENE Ndeye Sokhna Camara																							
77	KEBE Sophie		0/1	0						0/1														1:33
92	CAMARA Coura		0/1	0	0/1																			1:53
	Team / bench																							
	UKUPNO		22/37	59	6/10	5/8	3/6	2/2	1/2	4/8	1/1	8	7	2	2	17	8	1	1	0	0	0	0	

Goalkeepers		Saves / shots									
#	Surname and name	Tot.	%	9m	6m	Wing	7m	FB	Brk.	LD	
1	SALL Fama										
16	TOUBISSA ELBECO Justicia	7/22	32	2/8	1/1	2/6		0/1	2/6		
55	SENE Ndeye Sokhna Camara										
	TOTAL	7/22	32	2/8	1/1	2/6	0/0	0/1	2/6	0/0	

Coach: Yacine Messaoudi

Number of attacks: 53, Efficiency: 42%, Average Duration: 39.06 seconds

Attack by type of defense

	Shots	9m	6m	Wing	TF	E7	E2
On def. 6-0	11/17	4/7	3/3	2/4	9	0	2
On def. 5-1	5/11	2/2	1/4	0/1	8	2	0
On def. 3-3	1/2	0/0	1/1	0/0	0	0	0
On def. press.	0/1	0/1	0/0	0/0	0	0	0
Fastbreak	1/2				0	0	0

Attack with superiority / minority / goalkeeper out

	Attack				Reaction		
	Att.	Eff.	Shots	TF	FB	LD	Tot.
6 on 6	49	39%	19/32	17			
6 on 5	4	75%	3/4	0			

Player superiority / GK out counted at the end of attack (in case it changes during attack)

Defense by type

	Total	9m	6m	Wing	Stl.	C7	2m
Def. 6-0	13/24	6/11	0/1	4/7	7	1	0
Def. 5-1	1/3	0/0	0/0	0/1	1	0	0
Fastbreak	1/1				0	0	0

Defense with superiority / minority / goalkeeper out

	Attack				Reaction		
	Att.	Eff.	Shots	TF	FB	LD	Tot.
7 on 6 (GK out)	2	0%	0/0	2	0/0	1/1	1/1
6 on 6 (GK out)	1	0%	0/1	0	0/0	0/0	0/0
6 on 6	49	29%	14/27	22			
5 on 6	1	100%	1/1	0			

Numbers show attacking numbers of opponent. Lower efficiency of opponent means better defense of this team

Jersey number Tot. Total shooting 6m 6m (line) shooting 9m 9m shooting Wng Wing shooting FB Fastbreak sh. 7m 7m penalty sh.
 Brk. Breakthrough sh. LD Long distance sh. As. Assists PC Pass clear chance E7 Earned 7m pen. TF Technical faults St. Steals
 2m 2m punishments C7. Committed 7m E2 Earned 2m pun. YC. Yellow cards R/B Red/Blue cards Blk. Blocks S Starting Line-up

Handball statistics and livescore by Toma-soft ltd (www.toma-soft.hr)



26th IHF Women's World Championship

Denmark • Norway • Sweden

Group A, 3. round



Match Team Statistics

Match No. 45

P.R. of China 15 - 22 Senegal

(9 - 9) (6 - 13)

5.12.2023. 18:00

Attendance: 3714

Scandinaviu

Referees: Georgi Doychinov (BUL) / Yulian Goretsov (BUL)

Shot distribution by player

7 D. Camara

1/1		

1 post 1 miss.

10 A. Cissokho

1/1		
		1/1
		1/1

13 S. Sagna

1/1		2/2
2/3	1/1	
	1/1	1/1

1 post

14 F. Keita

0/1	1/1	
		2/2

2 miss.

15 H. Ndiaye

19 K. Seck

21 M. Diawara

27 D. Sy

1/1		
2/2		
	0/1	

28 L. Kamdop

31 M. Fall

		1/2
2/2		1/1

1 miss.

44 R. Dapina

3 post

77 S. Kebe

1 miss.

92 C. Camara

0/1		

TOTAL

3/3		2/2
5/7	2/2	2/3
2/3	1/2	5/5

5 post 5 miss.

Saves distribution goalkeepers

1 F. Sall

16 J. Toubissa Elbeco

0/1		0/5
2/3		2/3
1/4	1/2	1/3

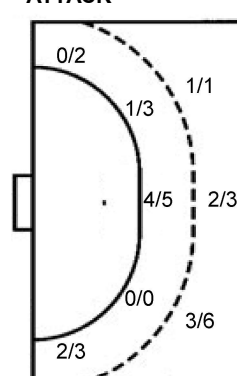
55 N. Sene

TOTAL

0/1		0/5
2/3		2/3
1/4	1/2	1/3

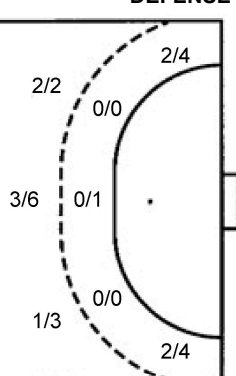
Shots by position

ATTACK



7m penalties	2/2
Fastbreak	1/2
Breakthrough	4/8
Long dist.	1/1

DEFENSE



7m penalties	0/1
Fastbreak	1/1
Breakthrough	4/7
Long dist.	0/0

Shooting statistics

Position	Goals	Sav.	Miss.	Post	Blk.	Total	%
Back (9m)	6	1	3	0	0	10	60
Line (6m)	5	1	1	1	0	8	63
Wing	2	1	0	2	0	5	40
7m penalties	2	0	0	0	0	2	100
Fastbreak	1	0	0	1	0	2	50
Breakthrough	4	2	1	1	0	8	50
Total	20	5	5	5	0	35	57

#	Jersey number	Tot.	Total shooting	6m	6m (line) shooting	9m	9m shooting	Wng	Wing shooting	FB	Fastbreak sh.	7m	7m penalty sh.
Brk.	Breakthrough sh.	LD	Long distance sh.	As.	Assists	PC	Pass clear chance	E7	Eearned 7m pen.	TF	Technical faults	St.	Steals
2m	2m punishments	C7.	Committed 7m	E2	Eearned 2m pun.	YC.	Yellow cards	R/B	Red/Blue cards	Blk.	Blocks	S	Starting Line-up

Handball statistics and livescore by Toma-soft ltd (www.toma-soft.hr)

