



26th IHF Women's World Championship

Denmark • Norway • Sweden

Group F, 3. round



Match Team Statistics

Match No. 42

Germany 33 - 17 Poland

(19 - 10) (14 - 7)

4.12.2023. 20:30

Attendance: 1021

Jyske Bank Boxen

Referees: Alexei Covalciuc (MDA) / Igor Covalciuc (MDA)

Germany

Players		Goals / shots									Attack				Def.			Penalties				TP		
#	Surname and name	S	Tot.	%	9m	6m	Wing	7m	FB	Brk.	LD	As.	PC	E7	E2	TF	St.	C7	Blk	YC	2m		R	B
3	BERGER Amelie	S	3/3	100			1/1		2/2			1												36:00
4	GRIJSEELS Alina	S	7/7	100	1/1	1/1		4/4		1/1		3	2			2						1		34:24
7	SCHMELZER Meike		1/2	50		1/2																2		19:02
9	ANTL Lisa Carolin		1/2	50		1/2								1		1								20:08
10	THOMAIER Mareike		1/3	33	0/1			0/1		1/1				1		2								10:13
11	SMITS Xenia		5/6	83					2/3	3/3		5		1		2								36:58
20	BÖLK Emily	S	2/8	25	0/5					2/3		1	2	1	1		3	1	2					42:56
22	WEIGEL Maren	S	0/1	0	0/1							2				1								5:59
23	LOTT Annika		2/4	50	2/4							2	1		1		1		1		1			22:09
24	WACHTER Sarah														1									10:52
29	DÖLL Antje	S	5/5	100			2/2		2/2		1/1							2				1		41:01
30	BEHREND Jenny																							22:31
42	FILTER Katharina	S										1	1											46:53
77	LEUCHTER Viola Charlotte		2/5	40	1/4					1/1						3	2							21:02
93	BEHNKE Julia	S	3/4	75		3/3			0/1					1	1		1							31:01
95	STOCKSCHLÄDER Johanna Maria		1/3	33			0/2		1/1								1							18:16
	Team / bench																							
	UKUPNO		33/53	62	4/16	6/8	3/5	4/5	7/9	8/9	1/1	15	6	5	3	12	8	3	3	0	5	0	0	

Goalkeepers		Saves / shots								
#	Surname and name	Tot.	%	9m	6m	Wing	7m	FB	Brk.	LD
24	WACHTER Sarah	3/8	38	1/2	0/1		0/1	0/1	1/2	1/1
42	FILTER Katharina	8/20	40	2/4	1/4	4/6	0/2	1/2	0/2	
	TOTAL	11/28	39	3/6	1/5	4/6	0/3	1/3	1/4	1/1

Coach: Markus Gaugisch

Number of attacks: 61, Efficiency: 54%, Average Duration: 26.10 seconds

Attack by type of defense

	Shots	9m	6m	Wing	TF	E7	E2
On def. 6-0	20/37	4/16	5/7	3/5	12	5	3
Fastbreak	7/9				0	0	0

Defense by type

	Total	9m	6m	Wing	Stl.	C7	2m
Def. 6-0	12/34	3/15	4/5	2/9	8	3	0
Fastbreak	2/3				0	0	5

Attack with superiority / minority / goalkeeper out

	Attack				Reaction		
	Att.	Eff.	Shots	TF	FB	LD	Tot.
6 on 6 (GK out)	2	0%	0/1	1	0/0	0/1	0/1
5 on 6 (GK out)	2	100%	2/2	0	0/0	0/0	0/0
6 on 6	45	51%	23/35	10			
6 on 5	8	63%	5/7	1			
5 on 6	2	50%	1/2	0			
5 on 5	2	100%	2/2	0			

Player superiority / GK out counted at the end of attack (in case it changes during attack)

Defense with superiority / minority / goalkeeper out

	Attack				Reaction		
	Att.	Eff.	Shots	TF	FB	LD	Tot.
7 on 6 (GK out)	12	17%	2/9	3	0/0	0/0	0/0
6 on 6 (GK out)	5	40%	2/3	2	1/1	1/1	2/2
6 on 6	33	30%	10/22	11			
5 on 6	3	0%	0/0	3			
7 on 5 (GK out)	2	0%	0/0	2	1/1	0/0	1/1
6 on 5	4	50%	2/3	1			
6 on 4	2	50%	1/2	0			

Numbers show attacking numbers of opponent. Lower efficiency of opponent means better defense of this team

Jersey number Tot. Total shooting 6m 6m (line) shooting 9m 9m shooting Wng Wing shooting FB Fastbreak sh. 7m 7m penalty sh.
 Brk. Breakthrough sh. LD Long distance sh. As. Assists PC Pass clear chance E7 Earned 7m pen. TF Technical faults St. Steals
 2m 2m punishments C7. Committed 7m E2 Earned 2m pun. YC. Yellow cards R/B Red/Blue cards Blk. Blocks S Starting Line-up



26th IHF Women's World Championship

Denmark • Norway • Sweden

Group F, 3. round



Match Team Statistics

Match No. 42

Germany 33 - 17 Poland

(19 - 10) (14 - 7)

4.12.2023. 20:30

Attendance: 1021

Jyske Bank Boxen

Referees: Alexei Covalciuc (MDA) / Igor Covalciuc (MDA)

Shot distribution by player

3 A. Berger

1/1		
	2/2	

4 A. Grijseels

2/2	1/1	4/4

7 M. Schmelzer

	0/1	
1/1		

9 L. Antl

	1/1	

1 miss.

10 M. Thomaier

1/2		

1 block

11 X. Smits

1/1		
1/2		3/3

20 E. Bölk

0/1		0/1
2/3		

1 post 2 miss.

22 M. Weigel

1 block

23 A. Lott

1/1		
		1/1

1 post 1 miss.

29 A. Döll

	2/2	2/2

1/1 lob

30 J. Behrend

77 V. Leuchter

1/1		1/2
0/1		
		0/1

93 J. Behnke

1/2		
	1/1	1/1

95 J. Stockschröder

	1/1	0/2

TOTAL

5/6	0/1	1/2
1/4	1/1	0/3
6/8	7/7	11/12

2 post 4 miss. 2 block 1/1 lob

Saves distribution goalkeepers

24 S. Wachter

2/2		0/1
	1/1	
		0/2

42 K. Filter

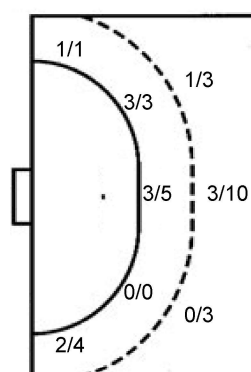
0/1	2/3	1/2
1/3	1/1	1/4
	1/2	0/2

TOTAL

2/3	2/3	1/3
1/3	2/2	1/4
	1/2	0/4

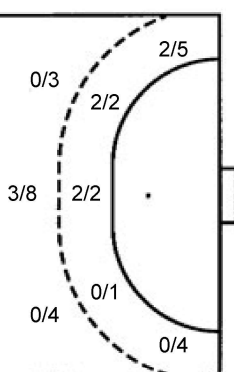
Shots by position

ATTACK



7m penalties 4/5
Fastbreak 7/9
Breakthrough 8/9
Long dist. 1/1

DEFENSE



7m penalties 3/3
Fastbreak 2/3
Breakthrough 3/5
Long dist. 0/2

Shooting statistics

Position	Goals	Sav.	Miss.	Post	Blk.	Total	%
Back (9m)	4	5	3	2	2	16	25
Line (6m)	6	1	1	0	0	8	75
Wing	3	2	0	0	0	5	60
7m penalties	4	1	0	0	0	5	80
Fastbreak	7	2	0	0	0	9	78
Breakthrough	8	1	0	0	0	9	89
Total	32	12	4	2	2	52	62

Jersey number Tot. Total shooting 6m 6m (line) shooting 9m 9m shooting Wng Wing shooting FB Fastbreak sh. 7m 7m penalty sh.
Brk. Breakthrough sh. LD Long distance sh. As. Assists PC Pass clear chance E7 Earned 7m pen. TF Technical faults St. Steals
2m 2m punishments C7. Committed 7m E2 Earned 2m pun. YC. Yellow cards R/B Red/Blue cards Blk. Blocks S Starting Line-up

Handball statistics and livescore by Toma-soft ltd (www.toma-soft.hr)



26th IHF Women's World Championship

Denmark • Norway • Sweden

Group F, 3. round



Match Team Statistics

Match No. 42

Germany 33 - 17 Poland

(19 - 10) (14 - 7)

4.12.2023. 20:30

Attendance: 1021

Jyske Bank Boxen

Referees: Alexei Covalciuc (MDA) / Igor Covalciuc (MDA)

Poland

Players		Goals / shots										Attack				Def.			Penalties			TP				
#	Surname and name	S	Tot.	%	9m	6m	Wing	7m	FB	Brk.	LD	As.	PC	E7	E2	TF	St.	C7	Blk	YC	2m		R	B		
2	ZIMNY Aleksandra		0/4	0	0/3	0/1										2			1		1				17:41	
6	GALIŃSKA Emilia		1/5	20	1/5							2			1	1									18:52	
8	KOBYLIŃSKA Monika	S	3/8	38	1/5			2/2		0/1			3	2	2	2	1	2				1			47:11	
9	BALSAM Magda	S	2/4	50			0/2	1/1	1/1							1									34:41	
11	WIERTELAK Mariola		1/1	100					1/1																23:14	
13	MATUSZCZYK Sylwia		2/2	100		2/2											1								19:58	
16	PLACZEK Adrianna	S														1									32:28	
17	GORNA Adrianna		0/3	0		0/2					0/1														22:41	
18	TOMCZYK Aleksandra		1/1	100	1/1								1			5						1			20:03	
21	ZIMA Barbara		0/1	0							0/1	1				1									18:00	
22	ROSIAK Aleksandra		1/2	50	0/1					1/1		2	1			4									22:35	
34	URBANSKA Marlena	S	2/2	100		2/2								1		1		1							42:34	
40	MICHALAK Daria	S	2/4	50			2/3		0/1			1													26:02	
49	KOCHANIAK-SALA Karolina	S	2/3	67						2/3		2	5		1	4		2				1			39:24	
78	UŚCINOWICZ Paulina																			1					21:28	
96	NOCUN Dagmara	S	0/2	0		0/2																			12:40	
	Team / bench																									
	UKUPNO		17/42	40	3/15	4/5	2/9	3/3	2/3	3/5	0/2	8	10	3	4	22	2	5	2	0	4	0	0			

Goalkeepers		Saves / shots									
#	Surname and name	Tot.	%	9m	6m	Wing	7m	FB	Brk.	LD	
16	PLACZEK Adrianna	9/30	30	3/6	1/6	1/3	1/4	2/4	1/7		
21	ZIMA Barbara	3/12	25	2/3	0/1	1/2	0/1	0/3	0/2		
	TOTAL	12/42	29	5/9	1/7	2/5	1/5	3/7	1/9	0/0	

Coach: Arne Senstad

Number of attacks: 61, Efficiency: 28%, Average Duration: 33.43 seconds

Attack by type of defense

	Shots	9m	6m	Wing	TF	E7	E2
On def. 6-0	12/34	3/15	4/5	2/9	22	3	4
Fastbreak	2/3				0	0	0

Defense by type

	Total	9m	6m	Wing	Stl.	C7	2m
Def. 6-0	20/37	4/16	5/7	3/5	2	5	0
Fastbreak	7/9				0	0	4

Attack with superiority / minority / goalkeeper out

	Attack				Reaction		
	Att.	Eff.	Shots	TF	FB	LD	Tot.
7 on 6 (GK out)	12	17%	2/9	3	0/0	0/0	0/0
6 on 6 (GK out)	5	40%	2/3	2	1/1	1/1	2/2
6 on 6	33	30%	10/22	11			
5 on 6	3	0%	0/0	3			
7 on 5 (GK out)	2	0%	0/0	2	1/1	0/0	1/1
6 on 5	4	50%	2/3	1			
6 on 4	2	50%	1/2	0			

Player superiority / GK out counted at the end of attack (in case it changes during attack)

Defense with superiority / minority / goalkeeper out

	Attack				Reaction		
	Att.	Eff.	Shots	TF	FB	LD	Tot.
6 on 6 (GK out)	2	0%	0/1	1	0/0	0/1	0/1
5 on 6 (GK out)	2	100%	2/2	0	0/0	0/0	0/0
6 on 6	45	51%	23/35	10			
6 on 5	8	63%	5/7	1			
5 on 6	2	50%	1/2	0			
5 on 5	2	100%	2/2	0			

Numbers show attacking numbers of opponent. Lower efficiency of opponent means better defense of this team

Jersey number Tot. Total shooting 6m 6m (line) shooting 9m 9m shooting Wng Wing shooting FB Fastbreak sh. 7m 7m penalty sh.
 Brk. Breakthrough sh. LD Long distance sh. As. Assists PC Pass clear chance E7 Earned 7m pen. TF Technical faults St. Steals
 2m 2m punishments C7. Committed 7m E2 Earned 2m pun. YC. Yellow cards R/B Red/Blue cards Blk. Blocks S Starting Line-up



26th IHF Women's World Championship

Denmark • Norway • Sweden

Group F, 3. round



Match Team Statistics

Match No. 42

Germany 33 - 17 Poland

(19 - 10) (14 - 7)

4.12.2023. 20:30

Attendance: 1021

Jyske Bank Boxen

Referees: Alexei Covalciuc (MDA) / Igor Covalciuc (MDA)

Shot distribution by player

2 A. Zimny 1 post 2 miss. 0/1 lob	6 E. Galińska 1 post 1 miss. 1 block	8 M. Kobylińska 1 miss. 1 block	9 M. Balsam 1 miss. 1/1 lob	11 M. Wiertelak 1/1 lob	13 S. Matuszczyk 1/1	17 A. Górna 1 block
18 A. Tomczyk 1/1	22 A. Rosiak 1 miss.	34 M. Urbańska 1/1	40 D. Michałak 1 post 1/1 lob	49 K. Kochaniak-Sala 1 post	78 P. Uścińowicz	96 D. Nocuń 1 miss.

TOTAL

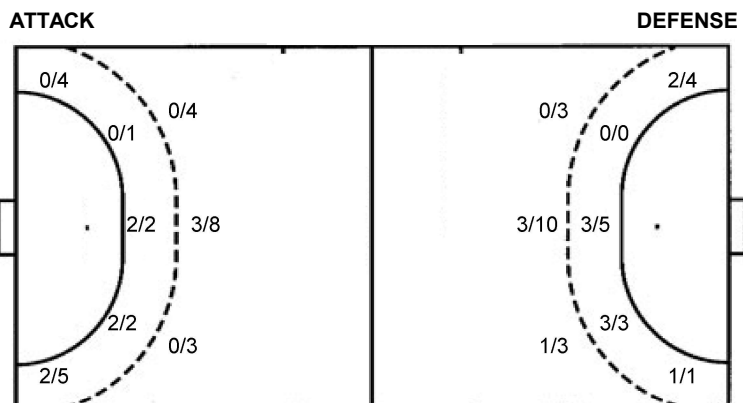
1/3	1/3	2/3
2/3	0/1	3/4
	1/2	4/4

4 post 7 miss. 3 block 3/4 lob

Saves distribution goalkeepers

16 A. Płaczek	21 B. Zima	TOTAL
1/3 1/1 0/1	0/3 1/1	1/6 1/1 1/2
3/4 2/2	1/1	3/4 3/3
2/7 0/5 0/7	0/1 0/1 1/4	2/8 0/6 1/11

Shots by position



7m penalties 3/3
Fastbreak 2/3
Breakthrough 3/5
Long dist. 0/2

7m penalties 4/5
Fastbreak 7/9
Breakthrough 8/9
Long dist. 1/1

Shooting statistics

Position	Goals	Sav.	Miss.	Post	Blk.	Total	%
Back (9m)	3	3	5	2	2	15	20
Line (6m)	4	1	0	0	0	5	80
Wing	2	4	2	1	0	9	22
7m penalties	3	0	0	0	0	3	100
Fastbreak	2	1	0	0	0	3	67
Breakthrough	3	1	0	1	0	5	60
Total	17	10	7	4	2	40	43

Jersey number Tot. Total shooting 6m 6m (line) shooting 9m 9m shooting Wng Wing shooting FB Fastbreak sh. 7m 7m penalty sh.
Brk. Breakthrough sh. LD Long distance sh. As. Assists PC Pass clear chance E7 Earned 7m pen. TF Technical faults St. Steals
2m 2m punishments C7. Committed 7m E2 Earned 2m pun. YC. Yellow cards R/B Red/Blue cards Blk. Blocks S Starting Line-up

Handball statistics and livescore by Toma-soft ltd (www.toma-soft.hr)

