



26th IHF Women's World Championship

Denmark • Norway • Sweden

Group B, 3. round



Match Team Statistics

Match No. 37

Cameroon 26 - 23 Paraguay

(12 - 12) (14 - 11)

4.12.2023. 18:00

Attendance: 689

Helsingborg Arena

Referees: Cristina Lovin (ROU) / Simona Stancu (ROU)

Cameroon

| # | Surname and name | S | Goals / shots | | | | | | | | Attack | | | | | Def. | | | Penalties | | | | TP | | | | | |
|--------------|----------------------------------|---|---------------|-----|-------|-----|------|-----|-----|------|--------|-----|----|----|-----|------|-----|----|-----------|----|----|---|----|---|---|---|--|-------|
| | | | Tot. | % | 9m | 6m | Wing | 7m | FB | Brk. | LD | As. | PC | E7 | E2 | TF | St. | C7 | Blk | YC | 2m | R | | B | | | | |
| 1 | MBEN BEDIANG Isabelle Noelle | S | 0/1 | 0 | | | | | | | | | | | 0/1 | | | | | | | | | | | | | 59:33 |
| 2 | NNOMO Sonya Marlaine | S | 2/4 | 50 | 1/2 | | | | | 1/2 | | | | | | 2 | 1 | | | | | | | | | 1 | | 49:20 |
| 3 | ATTISSO Brenda-Sherryl | | | | | | | | | | | | | | | | | | | | | | | | | | | 3:53 |
| 4 | FEUDJI VENGOU Genie Lupin | | 1/2 | 50 | | 1/1 | 0/1 | | | | | | | | | | | | | | | | | | | | | 22:46 |
| 5 | MBOUCHOU MANDOP Anne Florette | | | | | | | | | | | | | | | | | | | | | | | | | | | 9:14 |
| 6 | TOUBA BYOLO Marie Yolande Nadine | S | 2/4 | 50 | | | 2/4 | | | | | | | | | | | | | | | | | | 1 | 1 | | 33:53 |
| 7 | ATEBA ENGADI Laetitia Petronie | S | 5/9 | 56 | 3/5 | | 0/1 | | 0/1 | 2/2 | | | | | 5 | 3 | | 1 | 2 | | | | | | | 1 | | 39:26 |
| 8 | KONGNYUY Sifan | | | | | | | | | | | | | | | | | | | | | | | | | | | 17:36 |
| 9 | VOULANIA Chantal | | | | | | | | | | | | | | | | | | | | | | | | | | | 17:43 |
| 11 | NYAMSI POKOP Vicky Orchelle | S | 2/4 | 50 | 1/1 | 1/3 | | | | | | | | | 1 | | | | | | | | | | | 1 | | 33:35 |
| 12 | HAOUA Issa | S | 3/3 | 100 | 1/1 | | 2/2 | | | | | | | | 2 | 1 | | | 2 | | 1 | | | | | 1 | | 30:36 |
| 15 | EBANGA BABOGA Paola Cyrielle | S | 9/12 | 75 | 8/11 | | | | | 1/1 | | | | | | | | | 1 | 2 | | | | | | 1 | | 58:17 |
| 17 | NCHOUAPOUGNIGNI PASMA Vanessa | | 2/3 | 67 | 0/1 | 2/2 | | | | | | | | | 1 | | | | | 1 | | | | | | 2 | | 43:41 |
| 22 | BALANA Marie-Paule | | | | | | | | | | | | | | | | | | | | | | | | | | | 0:27 |
| Team / bench | | | | | | | | | | | | | | | | | | | | | | | | | | | | |
| UKUPNO | | | 26/42 | 62 | 14/21 | 4/6 | 4/8 | 0/0 | 1/3 | 3/3 | 0/1 | 11 | 5 | 0 | 2 | 16 | 1 | 1 | 0 | 0 | 7 | 0 | 0 | | | | | |

| # | Surname and name | Saves / shots | | | | | | | | |
|-------|------------------------------|---------------|----|-----|-----|------|-----|-----|------|-----|
| | | Tot. | % | 9m | 6m | Wing | 7m | FB | Brk. | LD |
| 1 | MBEN BEDIANG Isabelle Noelle | 10/32 | 31 | 4/6 | 2/4 | 4/10 | | 0/3 | 0/9 | |
| 22 | BALANA Marie-Paule | 0/1 | 0 | | | | 0/1 | | | |
| TOTAL | | 10/33 | 30 | 4/6 | 2/4 | 4/10 | 0/1 | 0/3 | 0/9 | 0/0 |

Coach: Bertin Njantou Tabeth

Number of attacks: 57, Efficiency: 46%, Average Duration: 28.32 seconds

Attack by type of defense

| | Shots | 9m | 6m | Wing | TF | E7 | E2 |
|---------------|-------|------|-----|------|----|----|----|
| On def. 6-0 | 14/22 | 8/11 | 2/4 | 2/5 | 9 | 0 | 1 |
| On def. 3-2-1 | 9/14 | 4/8 | 2/2 | 2/3 | 7 | 0 | 1 |
| Fastbreak | 1/3 | | | | 0 | 0 | 0 |

Defense by type

| | Total | 9m | 6m | Wing | Stl. | C7 | 2m |
|-----------|-------|-----|-----|------|------|----|----|
| Def. 6-0 | 17/29 | 2/4 | 1/3 | 6/13 | 1 | 1 | 0 |
| Def. 5-1 | 1/2 | 0/1 | 0/0 | 0/0 | 0 | 0 | 0 |
| Fastbreak | 3/3 | | | | 0 | 0 | 7 |

Attack with superiority / minority / goalkeeper out

| | Attack | | | | Reaction | | |
|-----------------|--------|------|-------|----|----------|-----|------|
| | Att. | Eff. | Shots | TF | FB | LD | Tot. |
| 7 on 6 (GK out) | 1 | 100% | 1/1 | 0 | 0/0 | 0/0 | 0/0 |
| 6 on 6 | 43 | 44% | 19/31 | 12 | | | |
| 6 on 5 | 3 | 100% | 3/3 | 0 | | | |
| 5 on 6 | 6 | 50% | 3/4 | 2 | | | |
| 4 on 6 | 4 | 0% | 0/2 | 2 | | | |

Player superiority / GK out counted at the end of attack (in case it changes during attack)

Defense with superiority / minority / goalkeeper out

| | Attack | | | | Reaction | | |
|-----------------|--------|------|-------|----|----------|-----|------|
| | Att. | Eff. | Shots | TF | FB | LD | Tot. |
| 7 on 6 (GK out) | 3 | 67% | 2/2 | 1 | 0/0 | 0/1 | 0/1 |
| 6 on 6 (GK out) | 3 | 0% | 0/0 | 3 | 0/0 | 0/0 | 0/0 |
| 6 on 6 | 39 | 36% | 14/24 | 15 | | | |
| 6 on 5 | 9 | 56% | 5/7 | 2 | | | |
| 6 on 4 | 3 | 67% | 2/2 | 1 | | | |

Numbers show attacking numbers of opponent. Lower efficiency of opponent means better defense of this team

Jersey number Tot. Total shooting 6m 6m (line) shooting 9m 9m shooting Wng Wing shooting FB Fastbreak sh. 7m 7m penalty sh.
 Brk. Breakthrough sh. LD Long distance sh. As. Assists PC Pass clear chance E7 Earned 7m pen. TF Technical faults St. Steals
 2m 2m punishments C7. Committed 7m E2 Earned 2m pun. YC. Yellow cards R/B Red/Blue cards Blk. Blocks S Starting Line-up



26th IHF Women's World Championship

Denmark • Norway • Sweden

Group B, 3. round



Match Team Statistics

Match No. 37

Cameroon 26 - 23 Paraguay

(12 - 12) (14 - 11)

4.12.2023. 18:00

Attendance: 689

Helsingborg Arena

Referees: Cristina Lovin (ROU) / Simona Stancu (ROU)

Shot distribution by player

2 S. Nnomo

| | | |
|-----|-----|--|
| 1/1 | | |
| | 0/1 | |
| 1/1 | | |

1 post

3 B. Attisso

| | | |
|--|--|--|
| | | |
| | | |
| | | |

4 G. Feudji Vengou

| | | |
|--|-----|--|
| | | |
| | 0/1 | |
| | 1/1 | |

5 A. Mbouchou Mandop

| | | |
|--|--|--|
| | | |
| | | |
| | | |

6 M. Touba Byolo

| | | |
|--|-----|-----|
| | | 1/1 |
| | 0/1 | 1/1 |
| | | |

1 post

7 L. Ateba Engadi

| | | |
|-----|-----|-----|
| | | 1/1 |
| 3/3 | 0/2 | 1/1 |
| | | |

1 post 1 miss.

8 S. Kongnyuy

| | | |
|--|--|--|
| | | |
| | | |
| | | |

9 C. Voulania

| | | |
|--|--|--|
| | | |
| | | |
| | | |

11 V. Nyamsi Pokop

| | | |
|-----|-----|-----|
| | | |
| 1/2 | 0/1 | |
| | | 1/1 |

12 I. Haoua

| | | |
|-----|-----|-----|
| | | |
| | | |
| 1/1 | 1/1 | 1/1 |

15 P. Ebanga Baboga

| | | |
|-----|-----|-----|
| 2/2 | | 2/2 |
| 1/1 | | |
| 2/2 | 1/1 | 1/2 |

2 miss.

17 V. Nchouapouognigni Pasma

| | | |
|-----|--|--|
| | | |
| | | |
| 2/2 | | |

1 miss.

TOTAL

| | | |
|-----|-----|-----|
| 3/3 | | 4/4 |
| 5/6 | 0/6 | 2/2 |
| 6/6 | 3/3 | 3/4 |

3 post 4 miss.

Saves distribution goalkeepers

1 I. Mben Bediang

| | | |
|-----|-----|-----|
| 0/5 | 1/1 | 0/2 |
| 3/7 | 2/3 | 1/2 |
| 1/4 | 2/4 | 0/3 |

22 M. Balana

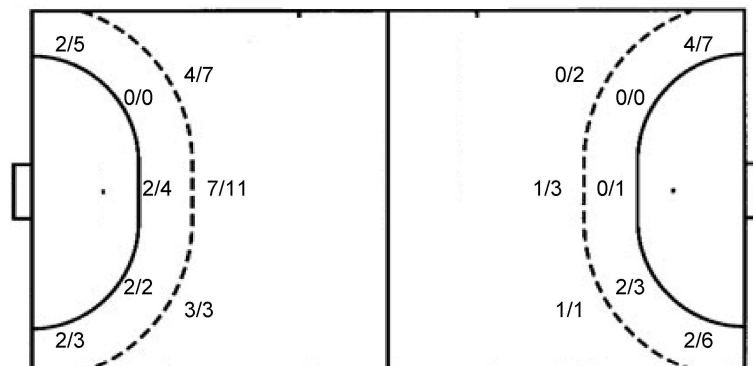
| | | |
|-----|--|--|
| | | |
| 0/1 | | |
| | | |

TOTAL

| | | |
|-----|-----|-----|
| 0/5 | 1/1 | 0/2 |
| 3/8 | 2/3 | 1/2 |
| 1/4 | 2/4 | 0/3 |

Shots by position

ATTACK



7m penalties 0/0

Fastbreak 1/3

Breakthrough 3/3

Long dist. 0/1

7m penalties 1/1

Fastbreak 3/3

Breakthrough 9/10

Long dist. 0/0

Shooting statistics

| Position | Goals | Sav. | Miss. | Post | Blk. | Total | % |
|--------------|-----------|----------|----------|----------|----------|-----------|-----------|
| Back (9m) | 14 | 1 | 4 | 2 | 0 | 21 | 67 |
| Line (6m) | 4 | 2 | 0 | 0 | 0 | 6 | 67 |
| Wing | 4 | 3 | 0 | 1 | 0 | 8 | 50 |
| 7m penalties | 0 | 0 | 0 | 0 | 0 | 0 | 0 |
| Fastbreak | 1 | 2 | 0 | 0 | 0 | 3 | 33 |
| Breakthrough | 3 | 0 | 0 | 0 | 0 | 3 | 100 |
| Total | 26 | 8 | 4 | 3 | 0 | 41 | 63 |

Jersey number Tot. Total shooting 6m 6m (line) shooting 9m 9m shooting Wng Wing shooting FB Fastbreak sh. 7m 7m penalty sh.
 Brk. Breakthrough sh. LD Long distance sh. As. Assists PC Pass clear chance E7 Earned 7m pen. TF Technical faults St. Steals
 2m 2m punishments C7. Committed 7m E2 Earned 2m pun. YC. Yellow cards R/B Red/Blue cards Blk. Blocks S Starting Line-up

Handball statistics and livescore by Toma-soft ltd (www.toma-soft.hr)



26th IHF Women's World Championship

Denmark • Norway • Sweden

Group B, 3. round



Match Team Statistics

Match No. 37

Cameroon 26 - 23 Paraguay

(12 - 12) (14 - 11)

4.12.2023. 18:00

Attendance: 689

Helsingborg Arena

Referees: Cristina Lovin (ROU) / Simona Stancu (ROU)

Paraguay

| Players | | Goals / shots | | | | | | | | | Attack | | | | Def. | | | Penalties | | | | TP | | | |
|--------------|------------------------------|---------------|-------|-----|-----|-----|------|-----|-----|------|--------|-----|----|----|------|----|-----|-----------|-----|----|----|----|---|---|-------|
| # | Surname and name | S | Tot. | % | 9m | 6m | Wing | 7m | FB | Brk. | LD | As. | PC | E7 | E2 | TF | St. | C7 | Blk | YC | 2m | | R | B | |
| 2 | ACUNA INFRAN Fatima | | 1/2 | 50 | | | 1/2 | | | | | | | | | 1 | | | | | | | | | 22:01 |
| 3 | MISKINICH LUGO Ada | | | | | | | | | | | | | | 1 | | | | | | | 1 | | | 14:25 |
| 4 | INFRAN MORA Fernanda | S | 7/9 | 78 | | 1/2 | | | 1/1 | 5/6 | | 3 | 2 | 1 | 2 | 6 | 1 | | | | | | | | 51:04 |
| 6 | MENDOZA PERALTA Jazmin | | 4/6 | 67 | 1/1 | | 2/4 | | 1/1 | | | 1 | | | 1 | 1 | | | | | | | | | 46:23 |
| 7 | DOS SANTOS RODRIGUEZ Karina | S | | | | | | | | | | | | | | | | | | | | | | | 27:24 |
| 8 | VERGARA MARTINEZ Kiara | S | 0/2 | 0 | | | 0/2 | | | | | | | | | | | | | | | | | | 11:50 |
| 11 | LEIVA MORLAS Delyne | S | 2/2 | 100 | 1/1 | 1/1 | | | | | | 1 | | | 4 | | | | | | | | | | 39:04 |
| 12 | OCAMPOS MOREL Fatima | S | | | | | | | | | | 1 | | | | | | | | | | | | | 47:32 |
| 14 | FERNANDEZ ESTIGARRIBIA Maria | S | 5/8 | 63 | 0/3 | | | | 1/1 | 4/4 | | 5 | 4 | | 3 | 6 | | | | | | 1 | | | 49:04 |
| 15 | BOBADILLA PEREIRA Belinda | | | | | | | | | | | | | | 1 | | | | | | | | | | 1:15 |
| 18 | LUGO LARA Maggie | S | 0/1 | 0 | | 0/1 | | | | | | 3 | | | 1 | | | | | | | | | | 47:27 |
| 20 | CRISTALDO VERA Ana | | 0/1 | 0 | 0/1 | | | | | | | | 1 | | 1 | | | | | | | | | | 25:17 |
| 24 | PORTILLO MIERES Ariana | | 4/6 | 67 | | | 3/5 | 1/1 | | | | | | | | | | | | | | | | | 26:43 |
| 25 | MACHUCA ESPINOZA Maria | | | | | | | | | | | | | | | | | | | | | | | | 10:31 |
| 28 | SAMANIEGO BENITEZ Milagros | | | | | | | | | | | | | | | | | | | | | | | | |
| Team / bench | | | | | | | | | | | | | | | | 1 | | | | | | | | | |
| UKUPNO | | | 23/37 | 62 | 2/6 | 2/4 | 6/13 | 1/1 | 3/3 | 9/10 | 0/0 | 13 | 8 | 1 | 7 | 22 | 1 | 0 | 0 | 0 | 2 | 0 | 0 | | |

| Goalkeepers | | Saves / shots | | | | | | | | |
|-------------|------------------------|---------------|----|------|-----|------|-----|-----|------|-----|
| # | Surname and name | Tot. | % | 9m | 6m | Wing | 7m | FB | Brk. | LD |
| 12 | OCAMPOS MOREL Fatima | 8/30 | 27 | 1/12 | 2/6 | 3/7 | | 2/3 | 0/2 | |
| 25 | MACHUCA ESPINOZA Maria | 0/4 | 0 | 0/3 | | | | | 0/1 | |
| TOTAL | | 8/34 | 24 | 1/15 | 2/6 | 3/7 | 0/0 | 2/3 | 0/3 | 0/0 |

Coach: Marizza Alejandra Faria Servin

Number of attacks: 57, Efficiency: 40%, Average Duration: 34.49 seconds

Attack by type of defense

| | Shots | 9m | 6m | Wing | TF | E7 | E2 |
|-------------|-------|-----|-----|------|----|----|----|
| On def. 6-0 | 17/29 | 2/4 | 1/3 | 6/13 | 19 | 1 | 7 |
| On def. 5-1 | 1/2 | 0/1 | 0/0 | 0/0 | 3 | 0 | 0 |
| Fastbreak | 3/3 | | | | 0 | 0 | 0 |

Defense by type

| | Total | 9m | 6m | Wing | Stl. | C7 | 2m |
|------------|-------|------|-----|------|------|----|----|
| Def. 6-0 | 14/22 | 8/11 | 2/4 | 2/5 | 0 | 0 | 0 |
| Def. 3-2-1 | 9/14 | 4/8 | 2/2 | 2/3 | 1 | 0 | 0 |
| Fastbreak | 1/3 | | | | 0 | 0 | 2 |

Attack with superiority / minority / goalkeeper out

| | Attack | | | | Reaction | | |
|-----------------|--------|------|-------|----|----------|-----|------|
| | Att. | Eff. | Shots | TF | FB | LD | Tot. |
| 7 on 6 (GK out) | 3 | 67% | 2/2 | 1 | 0/0 | 0/1 | 0/1 |
| 6 on 6 (GK out) | 3 | 0% | 0/0 | 3 | 0/0 | 0/0 | 0/0 |
| 6 on 6 | 39 | 36% | 14/24 | 15 | | | |
| 6 on 5 | 9 | 56% | 5/7 | 2 | | | |
| 6 on 4 | 3 | 67% | 2/2 | 1 | | | |

Player superiority / GK out counted at the end of attack (in case it changes during attack)

Defense with superiority / minority / goalkeeper out

| | Attack | | | | Reaction | | |
|-----------------|--------|------|-------|----|----------|-----|------|
| | Att. | Eff. | Shots | TF | FB | LD | Tot. |
| 7 on 6 (GK out) | 1 | 100% | 1/1 | 0 | 0/0 | 0/0 | 0/0 |
| 6 on 6 | 43 | 44% | 19/31 | 12 | | | |
| 6 on 5 | 3 | 100% | 3/3 | 0 | | | |
| 5 on 6 | 6 | 50% | 3/4 | 2 | | | |
| 4 on 6 | 4 | 0% | 0/2 | 2 | | | |

Numbers show attacking numbers of opponent. Lower efficiency of opponent means better defense of this team

Jersey number Tot. Total shooting 6m 6m (line) shooting 9m 9m shooting Wng Wing shooting FB Fastbreak sh. 7m 7m penalty sh.
 Brk. Breakthrough sh. LD Long distance sh. As. Assists PC Pass clear chance E7 Earned 7m pen. TF Technical faults St. Steals
 2m 2m punishments C7. Committed 7m E2 Earned 2m pun. YC. Yellow cards R/B Red/Blue cards Blk. Blocks S Starting Line-up



26th IHF Women's World Championship

Denmark • Norway • Sweden

Group B, 3. round



Match Team Statistics

Match No. 37

Cameroon 26 - 23 Paraguay

(12 - 12) (14 - 11)

4.12.2023. 18:00

Attendance: 689

Helsingborg Arena

Referees: Cristina Lovin (ROU) / Simona Stancu (ROU)

Shot distribution by player

2 F. Acuna Insfran

| | | |
|--|-----|-----|
| | | |
| | | |
| | 0/1 | 1/1 |

3 A. Miskinich Lugo

| | | |
|--|--|--|
| | | |
| | | |
| | | |

4 F. Insfran Mora

| | | |
|-----|-----|--|
| 1/1 | | |
| 2/2 | 1/1 | |
| 1/1 | 2/3 | |

1 post

6 J. Mendoza Peralta

| | | |
|-----|--|--|
| 3/3 | | |
| 1/1 | | |
| | | |

1 post 1 miss.

7 K. Dos Santos

| | | |
|--|--|--|
| | | |
| | | |
| | | |

8 K. Vergara Martinez

| | | |
|-----|-----|--|
| | | |
| 0/1 | 0/1 | |
| | | |

11 D. Leiva Morlas

| | | |
|-----|--|-----|
| | | |
| | | |
| 1/1 | | 1/1 |

14 M. Fernandez Estigarribia

| | | |
|-----|--|-----|
| 1/1 | | 1/1 |
| 1/3 | | 1/2 |
| 1/1 | | |

15 B. Bobadilla Pereira

| | | |
|--|--|--|
| | | |
| | | |
| | | |

18 M. Lugo Lara

| | | |
|--|-----|--|
| | | |
| | 0/1 | |
| | | |

20 A. Cristaldo Vera

| | | |
|--|-----|--|
| | 0/1 | |
| | | |
| | | |

24 A. Portillo Mieres

| | | |
|-----|--|-----|
| | | 1/1 |
| 1/1 | | |
| 0/1 | | 1/1 |

1 miss. 1/1 lob

28 M. Samaniego Benitez

| | | |
|--|--|--|
| | | |
| | | |
| | | |

TOTAL

| | | |
|-----|-----|-----|
| 5/5 | 0/1 | 2/2 |
| 5/8 | 1/3 | 1/2 |
| 3/4 | 2/4 | 3/3 |

2 post 2 miss. 1/1 lob

Saves distribution goalkeepers

12 F. Ocampos Morel

| | | |
|-----|-----|-----|
| 0/2 | | 0/3 |
| 1/6 | 6/6 | 0/2 |
| 0/5 | 0/2 | 1/4 |

25 M. Machuca Espinoza

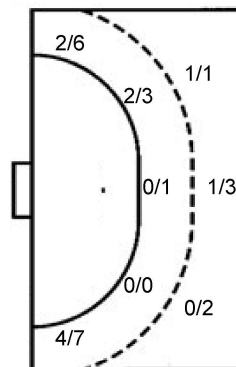
| | | |
|-----|-----|-----|
| 0/1 | | 0/1 |
| | | |
| 0/1 | 0/1 | |

TOTAL

| | | |
|-----|-----|-----|
| 0/3 | | 0/4 |
| 1/6 | 6/6 | 0/2 |
| 0/6 | 0/3 | 1/4 |

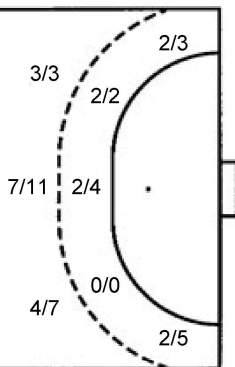
Shots by position

ATTACK



| | |
|--------------|------|
| 7m penalties | 1/1 |
| Fastbreak | 3/3 |
| Breakthrough | 9/10 |
| Long dist. | 0/0 |

DEFENSE



| | |
|--------------|-----|
| 7m penalties | 0/0 |
| Fastbreak | 1/3 |
| Breakthrough | 3/3 |
| Long dist. | 0/1 |

Shooting statistics

| Position | Goals | Sav. | Miss. | Post | Blk. | Total | % |
|--------------|-----------|-----------|----------|----------|----------|-----------|-----------|
| Back (9m) | 2 | 4 | 0 | 0 | 0 | 6 | 33 |
| Line (6m) | 2 | 2 | 0 | 0 | 0 | 4 | 50 |
| Wing | 6 | 4 | 2 | 1 | 0 | 13 | 46 |
| 7m penalties | 1 | 0 | 0 | 0 | 0 | 1 | 100 |
| Fastbreak | 3 | 0 | 0 | 0 | 0 | 3 | 100 |
| Breakthrough | 9 | 0 | 0 | 1 | 0 | 10 | 90 |
| Total | 23 | 10 | 2 | 2 | 0 | 37 | 62 |

Jersey number Tot. Total shooting 6m 6m (line) shooting 9m 9m shooting Wng Wing shooting FB Fastbreak sh. 7m 7m penalty sh.
 Brk. Breakthrough sh. LD Long distance sh. As. Assists PC Pass clear chance E7 Earned 7m pen. TF Technical faults St. Steals
 2m 2m punishments C7. Committed 7m E2 Earned 2m pun. YC. Yellow cards R/B Red/Blue cards Blk. Blocks S Starting Line-up

Handball statistics and livescore by Toma-soft ltd (www.toma-soft.hr)



26th IHF Women's World Championship

Denmark • Norway • Sweden

Group B, 3. round



Match Team Statistics

Match No. 37

Cameroon 26 - 23 Paraguay

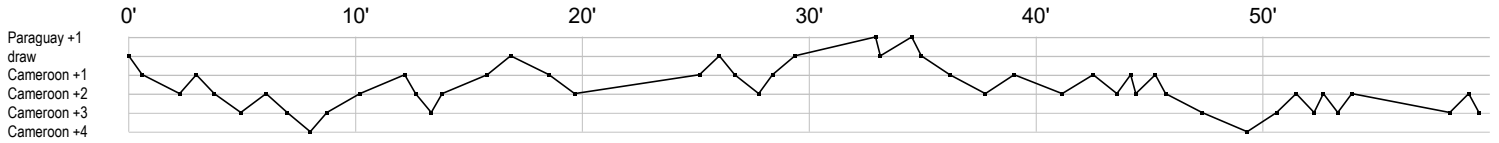
(12 - 12) (14 - 11)

4.12.2023. 18:00

Attendance: 689

Helsingborg Arena

Referees: Cristina Lovin (ROU) / Simona Stancu (ROU)



Cameroon

| | | | | | |
|-----------------|-------------|------------------|-----------------|-------------------|---------------|
| 1 Mben | s r s | r sr s r r r r s | rsr r r | r r f r s s r r r | r r r r s s r |
| 2 Nnomo S | a a p tg | f 2 | f t | t t | g t |
| 3 Attisso B | | | | | |
| 4 Feudji | | f g t | t | | |
| 5 Mbouchou | | | | | |
| 6 Toubia Byolo | | t | g | g f b | f |
| 7 Ateba Engadi | g g f a p f | | i a p f a g t a | a g p2 | f g t |
| 8 Kongnyuy S | | | | | |
| 9 Voulania C | | | t | | |
| 11 Nyamsi | g a | f f g 2 | | | |
| 12 Haoua I | g 2c | g t p a a | | t | g |
| 15 Ebanga | g | f f | 2 g | g f gi | g g g t g t g |
| 17 Nchouapouogr | 2 | t | f 2 | g a | g |
| 22 Balana M | r | | | | |

Paraguay

| | | | | | |
|--------------------|-----------------|-----------------|-------------------|---------------|----------------|
| 2 Acuna Insfran | | | gt | f | |
| 3 Miskinich | | i 2 | | | |
| 4 Insfran Mora | p ei t g g | a f bi g a g | g t t t a t | g p | f tg |
| 6 Mendoza | | gi g f g | t | g | f a |
| 7 Dos Santos | | | | | |
| 8 Vergara | f | f | | | |
| 11 Leiva Morlas | t | p | t | t g g | t |
| 12 Ocampos | r r r r s r r s | ss ar r s r r s | s r r s r r r r r | r r r r r r | |
| 14 Fernandez | i a f t t | p g t g i | t g | a 2 p f a p t | gi a a g p t f |
| 15 Bobadilla | | t | | | |
| 18 Lugo Lara M | aa | a f t | | | |
| 20 Cristaldo Vera | | p t | f | | |
| 24 Portillo Mieres | g | g | f | | f g g |
| 25 Machuca | | | | | r r r r |
| 28 Samaniego | | | | | |

| | | | | | |
|--------------------------|----------------------|--------------------------|--------------------------------|---------------------------|------------------------|
| In game | g Goal scored | f Missed shot | a Assist | t Technical faults | b Steal |
| 2 2min suspension | e Earned 7m | c Committed 7m | y Yellow card | r Red Card | k Blue card |
| i Earned 2min. | x Block | 4 4min suspension | p Pass for clear chance | s Saved shot | r Received goal |