



# 26th IHF Women's World Championship

Denmark • Norway • Sweden

Group C, 3. round



Match Team Statistics

Match No. 36

## Norway 33 - 23 Republic of Korea

(20 - 11) (13 - 12)

3.12.2023. 20:30

Attendance: 3456

DNB Arena

Referees: Cristian Lemes (URU) / Mathias Sosa (URU)

### Norway

Players			Goals / shots								Attack					Def.			Penalties				TP		
#	Surname and name	S	Tot.	%	9m	6m	Wing	7m	FB	Brk.	LD	As.	PC	E7	E2	TF	St.	C7	Blk	YC	2m	R		B	
6	AARDAHL Maren Nyland	S	4/7	57		3/6					1/1								1					41:03	
7	SKOGRAND Stine Ruscetta	S	3/3	100			2/2		1/1								1				1			28:42	
9	MORK Nora	S										6	2											12:14	
10	OFTEDAL Stine Bredal	S	2/3	67						2/3		5	4		1	3	1							32:52	
14	BREISTOL Kristine																								
15	INGSTAD Vilde Mortensen		3/4	75		3/4										2		1			1			36:58	
16	LUNDE Katrine	S										2	1											47:48	
21	BAKKERUD Ingvild Kristiansen	S	4/6	67	1/2		1/1		0/1		2/2	1	1								3			47:37	
22	NOVAK Kristina Sirum																								
23	HERREM Camilla	S	7/9	78			4/5		2/3	1/1						2	2	1						48:14	
24	SOLBERG-ISAKSEN Sanna Charlotte		4/4	100			2/2		2/2															11:41	
25	REISTAD Henny Ella		2/6	33	2/6							2	1			2								39:42	
26	HOVDEN Emilie Margrethe		1/3	33			1/1	0/1	0/1															33:55	
30	SAETEREN Maja Furu																								
32	NYGAARD Olivia Lykke											1												9:08	
33	DEILA Thale Rushfeldt		3/3	100					1/1	2/2		2		1	1	1		1						30:00	
	Team / bench																								
	UKUPNO		33/48	69	3/8	6/10	10/11	0/1	6/9	5/6	3/3	19	9	1	2	10	4	3	4	0	2	0	0		

Goalkeepers		Saves / shots								
#	Surname and name	Tot.	%	9m	6m	Wing	7m	FB	Brk.	LD
16	LUNDE Katrine	11/28	39	2/6	1/1	2/8	1/3	0/2	5/8	
32	NYGAARD Olivia Lykke	2/7	29	1/3	0/1	1/1		0/1	0/1	
	TOTAL	13/35	37	3/9	1/2	3/9	1/3	0/3	5/9	0/0

Coach: Thorir Hergeirsson

Number of attacks: 57, Efficiency: 58%, Average Duration: 23.53 seconds

### Attack by type of defense

	Shots	9m	6m	Wing	TF	E7	E2
On def. 6-0	23/33	3/7	6/10	9/10	10	1	2
Fastbreak	6/9				0	0	0

### Defense by type

	Total	9m	6m	Wing	Stl.	C7	2m
Def. 6-0	18/37	7/17	1/2	6/9	4	3	0
Fastbreak	3/3				0	0	2

### Attack with superiority / minority / goalkeeper out

	Attack				Reaction		
	Att.	Eff.	Shots	TF	FB	LD	Tot.
7 on 6 (GK out)	1	100%	1/1	0	0/0	0/0	0/0
6 on 6 (GK out)	3	67%	2/2	1	0/0	0/0	0/0
6 on 6	51	55%	28/42	9			
6 on 5	2	100%	2/2	0			

Player superiority / GK out counted at the end of attack (in case it changes during attack)

### Defense with superiority / minority / goalkeeper out

	Attack				Reaction		
	Att.	Eff.	Shots	TF	FB	LD	Tot.
7 on 6 (GK out)	6	0%	0/3	3	0/1	1/1	1/2
6 on 6 (GK out)	1	100%	1/1	0	0/0	0/0	0/0
6 on 6	46	43%	20/32	14			
6 on 5	4	50%	2/4	0			

Numbers show attacking numbers of opponent. Lower efficiency of opponent means better defense of this team

# Jersey number Tot. Total shooting 6m 6m (line) shooting 9m 9m shooting Wng Wing shooting FB Fastbreak sh. 7m 7m penalty sh.  
 Brk. Breakthrough sh. LD Long distance sh. As. Assists PC Pass clear chance E7 Earned 7m pen. TF Technical faults St. Steals  
 2m 2m punishments C7. Committed 7m E2 Earned 2m pun. YC. Yellow cards R/B Red/Blue cards Blk. Blocks S Starting Line-up

Handball statistics and livescore by Toma-soft ltd (www.toma-soft.hr)



# 26th IHF Women's World Championship

Denmark • Norway • Sweden

Group C, 3. round



## Match Team Statistics

Match No. 36

## Norway 33 - 23 Republic of Korea

(20 - 11) (13 - 12)

3.12.2023. 20:30

Attendance: 3456

DNB Arena

Referees: Cristian Lemes (URU) / Mathias Sosa (URU)

### Shot distribution by player

#### 6 M. Aardahl

	0/1	
1/1		1/2
	1/2	1/1

#### 7 S. Skogrand

1/1		
		2/2

#### 9 N. Mork


#### 10 S. Oftedal

	0/1	
1/1		1/1

#### 14 K. Breistol


#### 15 V. Ingstad

		2/2
		1/1

#### 21 I. Bakkerud

		1/1
	1/1	
	1/1	

1 miss.

2 post

#### 22 K. Novak


#### 23 C. Herrem

		2/3
2/2	0/1	2/2

1/1 lob

#### 24 S. Solberg-Isaksen

		1/1
1/1	1/1	1/1

#### 25 H. Reistad

0/1	1/1	
0/1		
		1/1

2 post

#### 26 E. Hovden

		0/1
1/1	0/1	

#### 30 M. Saeteren


#### 33 T. Deila

1/1		1/1
1/1		

### TOTAL

1/2	1/3	2/2
2/3	1/1	6/9
6/6	3/6	9/9

4 post 1 miss. 1/1 lob

### Saves distribution goalkeepers

#### 16 K. Lunde

	2/2	
0/4	2/2	0/2
1/5	6/7	0/4

#### 32 O. Nygaard

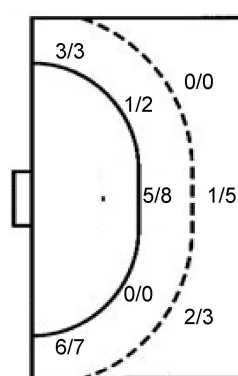
2/2		0/2
0/1		0/2

### TOTAL

	2/2	
2/6	2/2	0/4
1/6	6/7	0/6

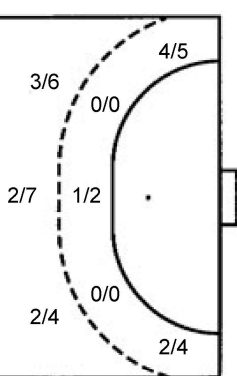
### Shots by position

#### ATTACK



7m penalties 0/1  
Fastbreak 6/9  
Breakthrough 5/6  
Long dist. 3/3

#### DEFENSE



7m penalties 2/3  
Fastbreak 3/3  
Breakthrough 4/9  
Long dist. 0/0

### Shooting statistics

Position	Goals	Sav.	Miss.	Post	Blk.	Total	%
Back (9m)	3	2	0	3	0	8	38
Line (6m)	6	3	1	0	0	10	60
Wing	9	1	0	0	0	10	90
7m penalties	0	1	0	0	0	1	0
Fastbreak	6	2	0	1	0	9	67
Breakthrough	5	1	0	0	0	6	83
<b>Total</b>	<b>29</b>	<b>10</b>	<b>1</b>	<b>4</b>	<b>0</b>	<b>44</b>	<b>66</b>

# Jersey number Tot. Total shooting 6m 6m (line) shooting 9m 9m shooting Wng Wing shooting FB Fastbreak sh. 7m 7m penalty sh.  
Brk. Breakthrough sh. LD Long distance sh. As. Assists PC Pass clear chance E7 Earned 7m pen. TF Technical faults St. Steals  
2m 2m punishments C7. Committed 7m E2 Earned 2m pun. YC. Yellow cards R/B Red/Blue cards Blk. Blocks S Starting Line-up

Handball statistics and livescore by Toma-soft ltd (www.toma-soft.hr)



# 26th IHF Women's World Championship

Denmark • Norway • Sweden

Group C, 3. round



Match Team Statistics

Match No. 36

## Norway 33 - 23 Republic of Korea

(20 - 11) (13 - 12)

3.12.2023. 20:30

Attendance: 3456

DNB Arena

Referees: Cristian Lemes (URU) / Mathias Sosa (URU)

### Republic of Korea

Players		Goals / shots									Attack				Def.			Penalties				TP				
#	Surname and name	S	Tot.	%	9m	6m	Wing	7m	FB	Brk.	LD	As.	PC	E7	E2	TF	St.	C7	Blk	YC	2m	R	B			
6	SONG Jiyoung	S	2/4	50	1/1		1/3					1					1	1							45:25	
7	SHIN Eunjoo	S	6/7	86			4/5		2/2			2					2	1							57:45	
11	RYU Eun Hee	S	5/11	45	2/7			1/2		2/2		5	7	1			4						2		56:19	
12	JEONG Jinhui	S																							26:59	
16	PARK Saeyoung											1													26:06	
17	JO Suyeon	S																							0:57	
19	KANG Eunhye		1/1	100		1/1								1	1		1	1							39:20	
20	JO Eunbeen		1/2	50						1/2							1								8:26	
22	WOO Bitna		3/7	43	2/4					1/3		3		1		2									42:54	
26	KANG Eunseo																								14:01	
27	JEON Jiyeon		2/2	100			1/1	1/1																	12:03	
29	YUN Yejin																									
31	GIM Boeun	S	1/2	50		0/1			1/1								2								40:03	
33	SHIN Jinmi	S	2/7	29	2/5					0/2		3	2		1	5									47:37	
34	LEE Hyewon																									
97	KIM Sejin																									
	Team / bench																							1		
	UKUPNO		23/43	53	7/17	1/2	6/9	2/3	3/3	4/9	0/0	15	9	3	2	17	3	1	0	1	2	0	0			

Goalkeepers		Saves / shots								
#	Surname and name	Tot.	%	9m	6m	Wing	7m	FB	Brk.	LD
12	JEONG Jinhui	4/24	17	1/3	2/6	0/6		0/3	1/3	0/3
16	PARK Saeyoung	6/19	32	1/2	1/3	1/5	1/1	2/5	0/3	
	TOTAL	10/43	23	2/5	3/9	1/11	1/1	2/8	1/6	0/3

Coach: Henrik Signell

Number of attacks: 57, Efficiency: 40%, Average Duration: 39.48 seconds

#### Attack by type of defense

	Shots	9m	6m	Wing	TF	E7	E2
On def. 6-0	18/37	7/17	1/2	6/9	17	3	2
Fastbreak	3/3				0	0	0

#### Defense by type

	Total	9m	6m	Wing	Stl.	C7	2m
Def. 6-0	23/33	3/7	6/10	9/10	3	1	0
Fastbreak	6/9				0	0	2

#### Attack with superiority / minority / goalkeeper out

	Attack				Reaction		
	Att.	Eff.	Shots	TF	FB	LD	Tot.
7 on 6 (GK out)	6	0%	0/3	3	0/1	1/1	1/2
6 on 6 (GK out)	1	100%	1/1	0	0/0	0/0	0/0
6 on 6	46	43%	20/32	14			
6 on 5	4	50%	2/4	0			

Player superiority / GK out counted at the end of attack (in case it changes during attack)

#### Defense with superiority / minority / goalkeeper out

	Attack				Reaction		
	Att.	Eff.	Shots	TF	FB	LD	Tot.
7 on 6 (GK out)	1	100%	1/1	0	0/0	0/0	0/0
6 on 6 (GK out)	3	67%	2/2	1	0/0	0/0	0/0
6 on 6	51	55%	28/42	9			
6 on 5	2	100%	2/2	0			

Numbers show attacking numbers of opponent. Lower efficiency of opponent means better defense of this team

# Jersey number Tot. Total shooting 6m 6m (line) shooting 9m 9m shooting Wng Wing shooting FB Fastbreak sh. 7m 7m penalty sh.  
 Brk. Breakthrough sh. LD Long distance sh. As. Assists PC Pass clear chance E7 Earned 7m pen. TF Technical faults St. Steals  
 2m 2m punishments C7. Committed 7m E2 Earned 2m pun. YC. Yellow cards R/B Red/Blue cards Blk. Blocks S Starting Line-up



# 26th IHF Women's World Championship

Denmark • Norway • Sweden

Group C, 3. round



## Match Team Statistics

Match No. 36

## Norway 33 - 23 Republic of Korea

(20 - 11) (13 - 12)

3.12.2023. 20:30

Attendance: 3456

DNB Arena

Referees: Cristian Lemes (URU) / Mathias Sosa (URU)

### Shot distribution by player

<b>6 J. Song</b> 0/1 1/2 1/1	<b>7 E. Shin</b> 1/2 1/1 2/2 2/2 lob	<b>11 E. Ryu</b> 0/1 1/1 2/2 0/1 2/2 1 post 1 miss. 2 block	<b>17 S. Jo</b>	<b>19 E. Kang</b> 1/1	<b>20 E. Jo</b> 0/1 1/1	<b>22 B. Woo</b> 0/1 2/2 0/1 1/1 1 post 1 block
<b>26 E. Kang</b>	<b>27 J. Jeon</b> 1/1 1/1	<b>29 Y. Yun</b>	<b>31 B. Gim</b> 1/1 0/1	<b>33 J. Shin</b> 0/1 2/2 0/3 1 block	<b>34 H. Lee</b>	<b>97 S. Kim</b>

### TOTAL

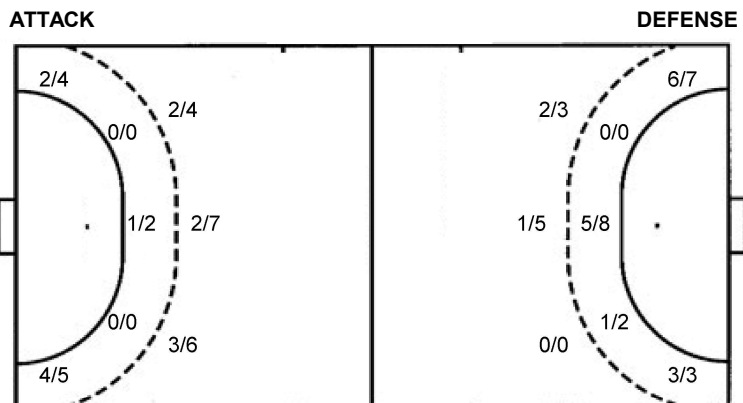
0/2
4/6 0/2 4/4
5/6 2/8 6/6

2 post 1 miss. 4 block 2/2 lob

### Saves distribution goalkeepers

<b>12 J. Jeong</b> 1/2 2/3 0/1 0/1 1/5 0/1 0/2 0/7	<b>16 S. Park</b> 0/1 1/3 2/4 0/5 3/4 0/2	<b>TOTAL</b> 1/2 2/3 0/2 1/3 0/1 3/9 0/6 3/6 0/9
---	--	---

### Shots by position



7m penalties 2/3  
Fastbreak 3/3  
Breakthrough 4/9  
Long dist. 0/0

7m penalties 0/1  
Fastbreak 6/9  
Breakthrough 5/6  
Long dist. 3/3

### Shooting statistics

Position	Goals	Sav.	Miss.	Post	Blk.	Total	%
Back (9m)	7	3	1	2	4	17	41
Line (6m)	1	1	0	0	0	2	50
Wing	6	3	0	0	0	9	67
7m penalties	2	1	0	0	0	3	67
Fastbreak	3	0	0	0	0	3	100
Breakthrough	4	5	0	0	0	9	44
<b>Total</b>	<b>23</b>	<b>13</b>	<b>1</b>	<b>2</b>	<b>4</b>	<b>43</b>	<b>53</b>

# Jersey number Tot. Total shooting 6m 6m (line) shooting 9m 9m shooting Wng Wing shooting FB Fastbreak sh. 7m 7m penalty sh.  
Brk. Breakthrough sh. LD Long distance sh. As. Assists PC Pass clear chance E7 Earned 7m pen. TF Technical faults St. Steals  
2m 2m punishments C7. Committed 7m E2 Earned 2m pun. YC. Yellow cards R/B Red/Blue cards Blk. Blocks S Starting Line-up

