





# 26th IHF Women's World Championship

Denmark • Norway • Sweden

Group E, 2. round



## Match Team Statistics

Match No. 34

## Chile 11 - 46 Denmark

(5 - 20) (6 - 26)

3.12.2023. 20:30

Attendance: 7622

Jyske Bank Boxen

Referees: Andjelina Kazanegra (MNE) / Jelena Vujacic (MNE)

### Shot distribution by player

<b>4 C. Paul</b> 0/1 1/2 1/1 0/1 1/1	<b>5 R. Ramirez Munoz</b> 0/0 0/0 0/0	<b>6 V. Lovera Salas</b> 0/1 1/1 2/3 0/1 1 post 3 block	<b>7 G. Müller Ruiz</b> 0/0 0/0 0/0	<b>8 J. Araya Salfate</b> 1/1 0/1 1/1	<b>9 C. Galvez</b> 0/0 0/1 1 post	<b>10 F. Parra Parra</b> 0/0 1/1 2 post 2 miss. 1 block 1/1 lob
<b>14 C. Moreno Córdova</b> 0/0 0/0 0/0	<b>16 A. Torres Lara</b> 0/1	<b>17 P. Pacheco Cortés</b> 1/1	<b>18 M. Correa Vergara</b> 0/0 0/0 0/0	<b>22 M. Álvarez Gyllen</b> 0/1 0/1 1 post	<b>27 F. Zavala Reyes</b> 0/0 0/0 0/0	<b>28 V. Carrasco</b> 0/0 0/0 0/0

### TOTAL

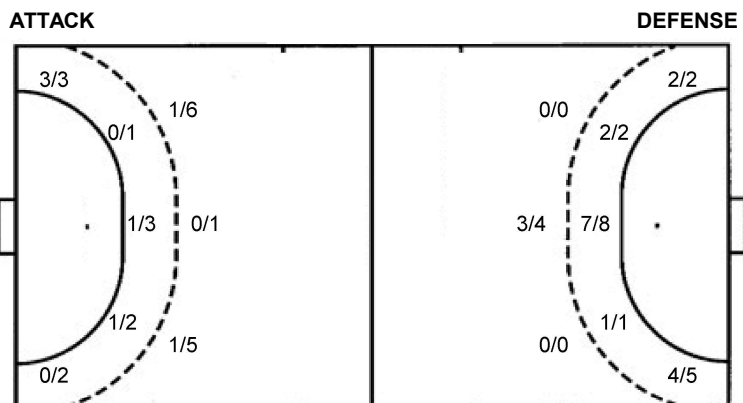
1/3	0/1	3/5
1/2	0/1	0/2
4/5	1/1	0/1

5 post 2 miss. 4 block 1/1 lob

### Saves distribution goalkeepers

<b>19 A. Piantini Avendano</b> 0/3 0/1 0/2 0/1 0/2 0/7	<b>23 M. Cortez Fuenzalida</b> 1/7 1/2 0/4 0/1 1/2 1/11 1/1 0/3	<b>TOTAL</b> 1/10 1/2 0/5 0/3 1/3 1/13 1/1 0/10
---	--	--

### Shots by position



7m penalties 2/4  
Fastbreak 0/0  
Breakthrough 2/6  
Long dist. 0/0

7m penalties 1/1  
Fastbreak 15/17  
Breakthrough 10/13  
Long dist. 1/1

### Shooting statistics

Position	Goals	Sav.	Miss.	Post	Blk.	Total	%
Back (9m)	2	4	1	1	4	12	17
Line (6m)	2	4	0	0	0	6	33
Wing	3	1	0	1	0	5	60
7m penalties	2	1	1	0	0	4	50
Fastbreak	0	0	0	0	0	0	0
Breakthrough	2	1	0	3	0	6	33
<b>Total</b>	<b>11</b>	<b>11</b>	<b>2</b>	<b>5</b>	<b>4</b>	<b>33</b>	<b>33</b>

# Jersey number Tot. Total shooting 6m 6m (line) shooting 9m 9m shooting Wng Wing shooting FB Fastbreak sh. 7m 7m penalty sh.  
Brk. Breakthrough sh. LD Long distance sh. As. Assists PC Pass clear chance E7 Earned 7m pen. TF Technical faults St. Steals  
2m 2m punishments C7. Committed 7m E2 Earned 2m pun. YC. Yellow cards R/B Red/Blue cards Blk. Blocks S Starting Line-up



# 26th IHF Women's World Championship

Denmark • Norway • Sweden

Group E, 2. round



Match Team Statistics

Match No. 34

## Chile 11 - 46 Denmark

(5 - 20) (6 - 26)

3.12.2023. 20:30

Attendance: 7622

Jyske Bank Boxen

Referees: Andjelina Kazanegra (MNE) / Jelena Vujacic (MNE)

### Denmark

#	Surname and name	S	Goals / shots								Attack					Def.			Penalties				TP					
			Tot.	%	9m	6m	Wing	7m	FB	Brk.	LD	As.	PC	E7	E2	TF	St.	C7	Blk	YC	2m	R		B				
1	TOFT Sandra																											
5	IVERSEN Sarah Aaberg		5/5	100		3/3																						21:46
6	HAGESO Helena Elver		3/3	100																								17:50
8	HANSEN Anne Mette	S	4/5	80		2/2																						34:34
10	HEINDAHL Kathrine Brothmann		2/2	100		2/2																						29:00
11	HAUGSTED Line	S																										14:15
12	KRISTENSEN Anna Opstrup	S																										57:06
21	HANSEN Andrea Ulrikka Aagot		6/7	86				2/3																				41:47
23	JORGENSEN Kristina		5/8	63	1/2	1/1																						26:28
25	JENSEN Trine Ostergaard	S	3/4	75				2/2																				17:54
27	BURGAARD Louise Katharina	S	4/4	100		1/1			1/1																			36:51
32	HOJLUND Mie Enggrob		1/1	100																								14:57
33	FRIIS Emma Cecilie Uhrskov																											
34	IVERSEN Rikke	S	1/2	50		0/1																						24:25
41	HALILCEVIC Elma	S	5/5	100				2/2																				59:54
45	SCAGLIONE Julie Mathiesen		7/8	88	2/2	1/1																						23:10
Team / bench																												
UKUPNO			46/54	85	3/4	10/11	6/7	1/1	15/17	10/13	1/1																	

#	Surname and name	Saves / shots								
		Tot.	%	9m	6m	Wing	7m	FB	Brk.	LD
1	TOFT Sandra									
12	KRISTENSEN Anna Opstrup	11/22	50	4/6	4/6	1/4	1/3		1/3	
TOTAL		11/22	50	4/6	4/6	1/4	1/3	2/0	1/3	0/0

Coach: Jesper Haandbak Jensen

Number of attacks: 60, Efficiency: 77%, Average Duration: 16.95 seconds

### Attack by type of defense

	Shots	9m	6m	Wing	TF	E7	E2
On def. 6-0	29/33	3/4	10/10	6/6	6	1	1
Fastbreak	15/17				0	0	0

### Defense by type

	Total	9m	6m	Wing	Stl.	C7	2m
Def. 6-0	3/10	0/3	0/3	2/2	1	0	0
Def. 5-1	6/19	2/9	2/3	1/3	7	4	0
Fastbreak	0/0				0	0	4

### Attack with superiority / minority / goalkeeper out

	Attack				Reaction		
	Att.	Eff.	Shots	TF	FB	LD	Tot.
7 on 6 (GK out)	3	67%	2/3	0	0/0	0/0	0/0
6 on 6 (GK out)	6	67%	4/5	1	0/0	0/0	0/0
6 on 6	49	78%	38/44	5			
6 on 5	2	100%	2/2	0			

Player superiority / GK out counted at the end of attack (in case it changes during attack)

### Defense with superiority / minority / goalkeeper out

	Attack				Reaction		
	Att.	Eff.	Shots	TF	FB	LD	Tot.
7 on 6 (GK out)	1	0%	0/0	1	0/0	1/1	1/1
6 on 6	51	20%	10/22	29			
6 on 5	6	17%	1/5	1			
5 on 6	1	0%	0/0	1			

Numbers show attacking numbers of opponent. Lower efficiency of opponent means better defense of this team

# Jersey number Tot. Total shooting 6m 6m (line) shooting 9m 9m shooting Wng Wing shooting FB Fastbreak sh. 7m 7m penalty sh.  
 Brk. Breakthrough sh. LD Long distance sh. As. Assists PC Pass clear chance E7 Earned 7m pen. TF Technical faults St. Steals  
 2m 2m punishments C7. Committed 7m E2 Earned 2m pun. YC. Yellow cards R/B Red/Blue cards Blk. Blocks S Starting Line-up



# 26th IHF Women's World Championship

Denmark • Norway • Sweden

Group E, 2. round



## Match Team Statistics

Match No. 34

## Chile 11 - 46 Denmark

(5 - 20) (6 - 26)

3.12.2023. 20:30

Attendance: 7622

Jyske Bank Boxen

Referees: Andjelina Kazanegra (MNE) / Jelena Vujacic (MNE)

## Shot distribution by player

### 5 S. Iversen

	1/1	
1/1		1/1
1/1		1/1

### 6 H. Hageso

1/1		1/1
		1/1

### 8 A. Hansen

1/1		
		0/1
3/3		

### 10 K. Heindahl

1/1		
		1/1

### 11 L. Haugsted


### 21 A. Hansen

1/1		1/1
1/1		1/1

1 miss. 2/2 lob

### 23 K. Jorgensen

1/1		
	0/1	4/4

2 post

### 25 T. Jensen

1/1		
0/1		1/1

1/1 lob

### 27 L. Bargaard

		1/1
2/2		1/1

### 32 M. Hojlund

		1/1

### 33 E. Friis


### 34 R. Iversen

0/1		
1/1		

### 41 E. Halilovic

3/3		2/2

### 45 J. Scaglione

1/1	0/1	
1/1	1/1	
4/4		

## TOTAL

9/10	1/2	5/5
3/3	1/1	2/3
12/13	0/1	10/10

2 post 1 miss. 3/3 lob

## Saves distribution goalkeepers

### 1 S. Toft


### 12 A. Kristensen

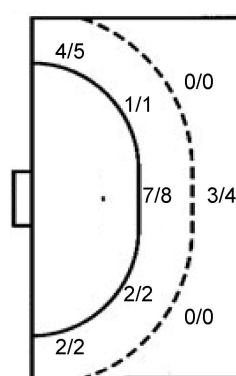
2/3	1/1	2/5
1/2	1/1	2/2
1/5	0/1	1/1

## TOTAL

2/3	1/1	2/5
1/2	1/1	2/2
1/5	0/1	1/1

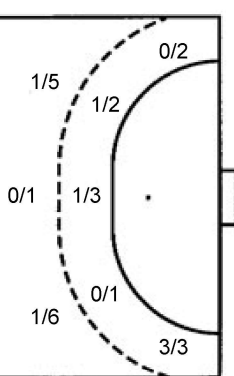
## Shots by position

### ATTACK



7m penalties 1/1  
Fastbreak 15/17  
Breakthrough 10/13  
Long dist. 1/1

### DEFENSE



7m penalties 2/4  
Fastbreak 0/0  
Breakthrough 2/6  
Long dist. 0/0

## Shooting statistics

Position	Goals	Sav.	Miss.	Post	Blk.	Total	%
Back (9m)	3	0	0	1	0	4	75
Line (6m)	10	1	0	0	0	11	91
Wing	6	0	1	0	0	7	86
7m penalties	1	0	0	0	0	1	100
Fastbreak	15	2	0	0	0	17	88
Breakthrough	10	2	0	1	0	13	77
<b>Total</b>	<b>45</b>	<b>5</b>	<b>1</b>	<b>2</b>	<b>0</b>	<b>53</b>	<b>85</b>

# Jersey number Tot. Total shooting 6m 6m (line) shooting 9m 9m shooting Wng Wing shooting FB Fastbreak sh. 7m 7m penalty sh.  
Brk. Breakthrough sh. LD Long distance sh. As. Assists PC Pass clear chance E7 Earned 7m pen. TF Technical faults St. Steals  
2m 2m punishments C7. Committed 7m E2 Earned 2m pun. YC. Yellow cards R/B Red/Blue cards Blk. Blocks S Starting Line-up

Handball statistics and livescore by Toma-soft ltd (www.toma-soft.hr)

