



26th IHF Women's World Championship

Denmark • Norway • Sweden

Group E, 2. round



Match Team Statistics

Match No. 33

Romania 37 - 28 Serbia

(19 - 13) (18 - 15)

3.12.2023. 18:00

Attendance: 5907

Jyske Bank Boxen

Referees: Bonok Koo (KOR) / Seok Lee (KOR)

Romania

#	Surname and name	S	Goals / shots								Attack				Def.			Penalties				TP					
			Tot.	%	9m	6m	Wing	7m	FB	Brk.	LD	As.	PC	E7	E2	TF	St.	C7	Blk	YC	2m		R	B			
2	DINCA Elena-Nicoleta	S	4/4	100				2/2				2/2				1											50:47
4	PASCAN Maria-Claudia																										
7	BUCESCHI Eliza-Iulia	S	8/10	80	2/3	1/1		3/3			2/3				2	3	2		2		1						32:43
12	CIUCA Diana-Cristiana	S																									21:32
13	LASLO Cristina	S	4/10	40	0/6	1/1		2/2		1/1				9		1			4								47:22
14	BAZALIU Bianca-Maria		1/4	25	1/4									1					1		1						14:12
18	BUCUR Daria	S	1/4	25	1/4									3					1								43:31
20	DUMANSKA Yuliya																										16:02
21	DINDILIGAN Alexandra		2/2	100				1/1		1/1																	9:13
22	BADEA Alexandra-Diana		0/2	0				0/1		0/1							1										10:56
27	OSTASE Lorena-Gabriela		2/3	67		2/3																		1			14:00
30	SERAFICEANU Sonia-Mariana	S	7/7	100			6/6		1/1															1			50:32
70	POPA Andreea- Cristina		2/4	50	0/1					2/2	0/1			1	3			1									35:48
71	GOGIRLA Alicia-Maria		2/2	100	1/1			1/1																			6:41
77	PINTEA Crina-Elena	S	4/4	100		3/3			1/1							2	1	2									46:38
98	HOSU Daciana													2													20:03
	Team / bench																										
	UKUPNO		37/56	66	5/19	7/8	9/10	6/6	7/8	3/5	0/0			19	6	6	2	4	6	1	1	0	2	0	0		

#	Surname and name	Saves / shots								
		Tot.	%	9m	6m	Wing	7m	FB	Brk.	LD
12	CIUCA Diana-Cristiana	5/16	31	5/7	0/2	0/5			0/2	
20	DUMANSKA Yuliya	1/8	13	1/3	0/2	0/2			0/1	
98	HOSU Daciana	4/14	29	2/5	1/3	0/1	0/1		1/4	
	TOTAL	10/38	26	8/15	1/7	0/8	0/1	0/0	1/7	0/0

Coach: **Constantin -Florentin Pera**

Number of attacks: 57, Efficiency: 65%, Average Duration: 28.95 seconds

Attack by type of defense

	Shots	9m	6m	Wing	TF	E7	E2
On def. 6-0	21/39	5/19	6/7	7/8	4	6	2
Fastbreak	7/8				0	0	0

Defense by type

	Total	9m	6m	Wing	Stl.	C7	2m
Def. 6-0	27/42	7/19	6/7	8/9	6	1	0
Fastbreak	0/0				0	0	2

Attack with superiority / minority / goalkeeper out

	Attack				Reaction		
	Att.	Eff.	Shots	TF	FB	LD	Tot.
7 on 6 (GK out)	1	0%	0/1	0	0/0	0/0	0/0
6 on 6 (GK out)	3	0%	0/3	0	0/0	0/0	0/0
6 on 6	50	68%	34/46	4			
6 on 4	3	100%	3/3	0			

Player superiority / GK out counted at the end of attack (in case it changes during attack)

Defense with superiority / minority / goalkeeper out

	Attack				Reaction		
	Att.	Eff.	Shots	TF	FB	LD	Tot.
5 on 6 (GK out)	2	0%	0/2	0	0/0	0/0	0/0
6 on 6	51	51%	26/36	15			
6 on 5	4	50%	2/4	0			

Numbers show attacking numbers of opponent. Lower efficiency of opponent means better defense of this team

Jersey number Tot. Total shooting 6m 6m (line) shooting 9m 9m shooting Wng Wing shooting FB Fastbreak sh. 7m 7m penalty sh.
 Brk. Breakthrough sh. LD Long distance sh. As. Assists PC Pass clear chance E7 Earned 7m pen. TF Technical faults St. Steals
 2m 2m punishments C7. Committed 7m E2 Earned 2m pun. YC. Yellow cards R/B Red/Blue cards Blk. Blocks S Starting Line-up



26th IHF Women's World Championship

Denmark • Norway • Sweden

Group E, 2. round



Match Team Statistics

Match No. 33

Romania 37 - 28 Serbia

(19 - 13) (18 - 15)

3.12.2023. 18:00

Attendance: 5907

Jyske Bank Boxen

Referees: Bonok Koo (KOR) / Seok Lee (KOR)

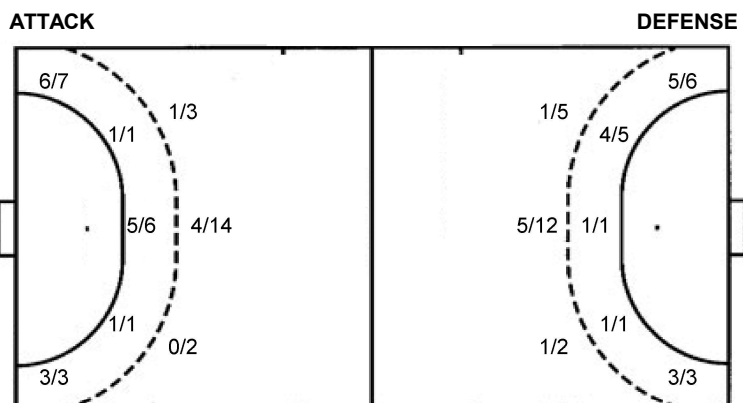
Shot distribution by player

2 E. Dinca 1/1 2/2 1/1 lob	4 M. Pascan	7 E. Buceschi 1/2 3/3 1/1 3/3 1 miss.	13 C. Laslo 1/1 2/2 1/2 0/1 2 post 2 miss.	14 B. Bazaliu 0/1 1/1 0/1 1 miss.	18 D. Bucur 0/1 1/2 1 block	21 A. Dindiligan 1/1 1/1	22 A. Badea 0/1 1 miss.	27 L. Ostase 2/2 0/1	30 S. Seraficeanu 1/1 6/6	70 A. Popa 1/1 1/1 1 miss. 1 block	71 A. Gogirla 1/1	77 C. Pinte 1/1 3/3	TOTAL 5/5 0/1 11/12 2/4 3/4 6/7 2/3 7/9 2 post 6 miss. 2 block 1/1 lob
--	--------------------	---	--	--	---	---------------------------------------	--------------------------------------	-----------------------------------	--	--	-----------------------------	----------------------------------	--

Saves distribution goalkeepers

12 D. Ciuca 0/3 0/1 1/4 2/2 1/4	20 Y. Dumanska 0/2 0/1 0/1 1/1	98 D. Hosu 0/1 1/2 0/3 1/1 1/2	TOTAL 0/6 0/1 0/2 1/4 1/1 2/3 1/10 3/6 2/5
---	---	--	--

Shots by position



7m penalties	6/6	7m penalties	1/1
Fastbreak	7/8	Fastbreak	0/0
Breakthrough	3/5	Breakthrough	6/7
Long dist.	0/0	Long dist.	0/0

Shooting statistics

Position	Goals	Sav.	Miss.	Post	Blk.	Total	%
Back (9m)	5	7	3	2	2	19	26
Line (6m)	7	1	0	0	0	8	88
Wing	9	1	0	0	0	10	90
7m penalties	6	0	0	0	0	6	100
Fastbreak	7	0	1	0	0	8	88
Breakthrough	3	0	2	0	0	5	60
Total	37	9	6	2	2	56	66

Jersey number Tot. Total shooting 6m 6m (line) shooting 9m 9m shooting Wng Wing shooting FB Fastbreak sh. 7m 7m penalty sh.
 Brk. Breakthrough sh. LD Long distance sh. As. Assists PC Pass clear chance E7 Earned 7m pen. TF Technical faults St. Steals
 2m 2m punishments C7. Committed 7m E2 Earned 2m pun. YC. Yellow cards R/B Red/Blue cards Blk. Blocks S Starting Line-up



26th IHF Women's World Championship

Denmark • Norway • Sweden

Group E, 2. round



Match Team Statistics

Match No. 33

Romania 37 - 28 Serbia

(19 - 13) (18 - 15)

3.12.2023. 18:00

Attendance: 5907

Jyske Bank Boxen

Referees: Bonok Koo (KOR) / Seok Lee (KOR)

Serbia

Players		Goals / shots									Attack					Def.			Penalties				TP		
#	Surname and name	S	Tot.	%	9m	6m	Wing	7m	FB	Brk.	LD	As.	PC	E7	E2	TF	St.	C7	Blk	YC	2m	R		B	
2	RADOSAVLJEVIĆ Sanja	S	3/4	75			2/3			1/1															33:05
3	VELIČKOVIĆ Teodora		0/1	0	0/1													1							5:18
4	MAJKIĆ Teodora		0/1	0	0/1							1				1									6:40
7	VUKAJLOVIĆ Aleksandra		0/1	0	0/1							2				1									11:22
11	LANIŠTANIN Marija		5/7	71	3/5			1/1		1/1		1			1	1									19:41
14	NUKOVIĆ Edita																								6:14
15	JANJUŠEVIĆ Andela	S	4/5	80	3/4					1/1		2	2			2									40:05
22	JOVOVIĆ Jovana	S	5/9	56	1/4	1/1				3/4		6				5	1				1				50:46
25	STAMENIĆ Aleksandra		3/4	75	0/1		3/3								1							1			27:09
27	KUBINA Molli																								47:37
29	LOVRIĆ Nataša	S	1/1	100			1/1																		43:33
31	BOJIČIĆ Katarina	S	2/2	100		2/2												4			1	1			37:15
34	RADEVIĆ Dunja		2/2	100		2/2																			16:27
36	LAZIĆ Emilija	S	1/4	25	0/3	1/1										4					2				31:19
92	MILOJEVIĆ Jovana		2/2	100		2/2								1		1		1							32:05
99	ČOLIĆ Marija	S																							11:02
	Team / bench																								1
	UKUPNO		28/43	65	7/19	6/7	8/9	1/1	0/0	6/7	0/0	12	2	1	2	15	1	6	2	3	2	0	0		

Goalkeepers		Saves / shots								
#	Surname and name	Tot.	%	9m	6m	Wing	7m	FB	Brk.	LD
27	KUBINA Molli	9/35	26	7/11	1/4	1/7	0/4	0/6	0/3	
99	ČOLIĆ Marija	0/11	0	0/1	0/4	0/3	0/2	0/1		
	TOTAL	9/46	20	7/12	1/8	1/10	0/6	0/7	0/3	0/0

Coach: Uroš Bregar

Number of attacks: 57, Efficiency: 49%, Average Duration: 34.21 seconds

Attack by type of defense

	Shots	9m	6m	Wing	TF	E7	E2
On def. 6-0	27/42	7/19	6/7	8/9	15	1	1
On def. 5-1	0/0	0/0	0/0	0/0	0	0	1
Fastbreak	0/0				0	0	0

Defense by type

	Total	9m	6m	Wing	Stl.	C7	2m
Def. 6-0	21/39	5/19	6/7	7/8	1	6	0
Fastbreak	7/8				0	0	2

Attack with superiority / minority / goalkeeper out

	Attack				Reaction		
	Att.	Eff.	Shots	TF	FB	LD	Tot.
5 on 6 (GK out)	2	0%	0/2	0	0/0	0/0	0/0
6 on 6	51	51%	26/36	15			
6 on 5	4	50%	2/4	0			

Player superiority / GK out counted at the end of attack (in case it changes during attack)

Defense with superiority / minority / goalkeeper out

	Attack				Reaction		
	Att.	Eff.	Shots	TF	FB	LD	Tot.
7 on 6 (GK out)	1	0%	0/1	0	0/0	0/0	0/0
6 on 6 (GK out)	3	0%	0/3	0	0/0	0/0	0/0
6 on 6	50	68%	34/46	4			
6 on 4	3	100%	3/3	0			

Numbers show attacking numbers of opponent. Lower efficiency of opponent means better defense of this team

Jersey number Tot. Total shooting 6m 6m (line) shooting 9m 9m shooting Wng Wing shooting FB Fastbreak sh. 7m 7m penalty sh.
 Brk. Breakthrough sh. LD Long distance sh. As. Assists PC Pass clear chance E7 Earned 7m pen. TF Technical faults St. Steals
 2m 2m punishments C7. Committed 7m E2 Earned 2m pun. YC. Yellow cards R/B Red/Blue cards Blk. Blocks S Starting Line-up

Handball statistics and livescore by Toma-soft ltd (www.toma-soft.hr)



26th IHF Women's World Championship

Denmark • Norway • Sweden

Group E, 2. round



Match Team Statistics

Match No. 33

Romania 37 - 28 Serbia

(19 - 13) (18 - 15)

3.12.2023. 18:00

Attendance: 5907

Jyske Bank Boxen

Referees: Bonok Koo (KOR) / Seok Lee (KOR)

Shot distribution by player

2 S. Radosavljević

	1/1	1/1
1/1		

1 post

3 T. Veličković

		0/1

4 T. Majkić

1 block

7 A. Vukajlović

		0/1

11 M. Laništanin

1/1		
1/1		
3/3		0/1

1 miss.

14 E. Nuković

15 A. Janjušević

2/2		1/1
	0/1	
1/1		

22 J. Jovović

0/1		
2/3	2/3	1/1

1 post

25 A. Stamenić

1/1		
1/1		
1/1		

1 miss.

29 N. Lovrić

1/1		

31 K. Bojčić

		1/1
	1/1	

34 D. Radević

1/1		1/1

36 E. Lazić

		0/1
	0/2	1/1

92 J. Milojević

1/1		
1/1		

TOTAL

6/6	1/1	2/2
3/4	0/1	1/3
9/10	3/6	3/5

2 post 2 miss. 1 block

Saves distribution goalkeepers

27 M. Kubina

0/4	1/1	1/9
2/3		1/2
1/7	1/3	2/6

99 M. Čolić

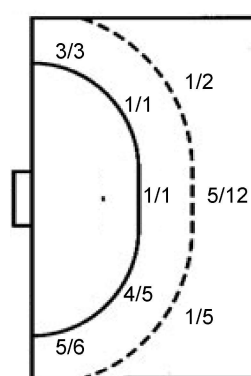
0/1		0/3
0/1		0/2
		0/3

TOTAL

0/5	1/1	1/12
2/4		1/4
1/7	1/3	2/9

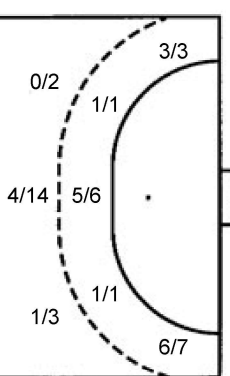
Shots by position

ATTACK



7m penalties	1/1
Fastbreak	0/0
Breakthrough	6/7
Long dist.	0/0

DEFENSE



7m penalties	6/6
Fastbreak	7/8
Breakthrough	3/5
Long dist.	0/0

Shooting statistics

Position	Goals	Sav.	Miss.	Post	Blk.	Total	%
Back (9m)	7	8	2	1	1	19	37
Line (6m)	6	1	0	0	0	7	86
Wing	8	0	0	1	0	9	89
7m penalties	1	0	0	0	0	1	100
Fastbreak	0	0	0	0	0	0	0
Breakthrough	6	1	0	0	0	7	86
Total	28	10	2	2	1	43	65

Jersey number Tot. Total shooting 6m 6m (line) shooting 9m 9m shooting Wng Wing shooting FB Fastbreak sh. 7m 7m penalty sh.
 Brk. Breakthrough sh. LD Long distance sh. As. Assists PC Pass clear chance E7 Earned 7m pen. TF Technical faults St. Steals
 2m 2m punishments C7. Committed 7m E2 Earned 2m pun. YC. Yellow cards R/B Red/Blue cards Blk. Blocks S Starting Line-up

Handball statistics and livescore by Toma-soft ltd (www.toma-soft.hr)



26th IHF Women's World Championship

Denmark • Norway • Sweden

Group E, 2. round



Match Team Statistics

Match No. 33

Romania 37 - 28 Serbia

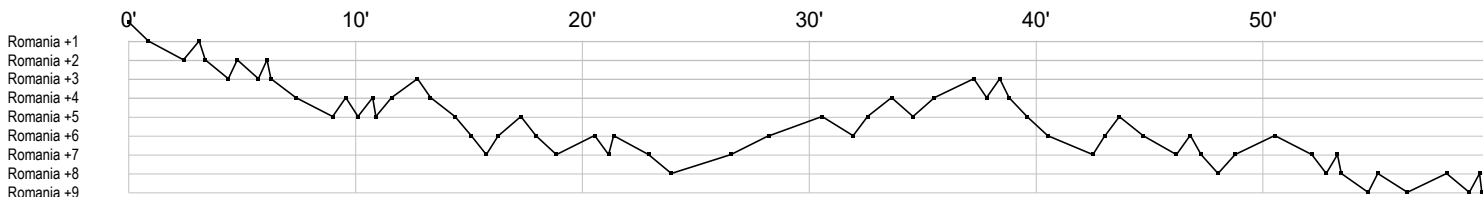
(19 - 13) (18 - 15)

3.12.2023. 18:00

Attendance: 5907

Jyske Bank Boxen

Referees: Bonok Koo (KOR) / Seok Lee (KOR)



Romania

2 Dinca E	g	a g	g	g
4 Pascan M				
7 Buceschi E	g g a t t a f g		c g e pg	e g pg g f p
12 Ciuca D	s r r r s s r r r r s r r r			
13 Laslo C	a a f a a b g	b bg	f a e f g a a gf	b f a a f
14 Bazaliu B		f a g b f f		x
18 Bucur D	a ba f a	g f	f	
20 Dumanska Y		s r r r	r r r r r	
21 Dindiligan A				g g
22 Badea A				f f e
27 Ostase L			2	g g f
30 Seraficeanu S	g g g	g g	g g	2
70 Popa A		g a	f f	i p g p p
71 Gogirla A				g g
77 Pintea C	g g g	g	t i e e	t
98 Hosu D			r	s s r r r a r r

Serbia

2 Radosavljević		g g	g f	
3 Veličković T				c
4 Majkić T		a		t f
7 Vukajlović A			a a	f t
11 Laništanin M		f a t g i	g	g f g g
14 Nuković E				
15 Janjušević A	g g g	t t a	p	p g f a
22 Jovović J	g f b t t	a f a y a f	g t a	f t a g t a g g
25 Stamenić A			g g2	f gi
27 Kubina M		r s r r r s r r r r r s s	s r r s r r	r r r r r r r r s r s r
29 Lovrić N		g		
31 Bojičić K	y		c c 2c	c g g
34 Rađević D		g g		
36 Lazić E	f t g f	t	xx f	t t
92 Milojević J		t g	g e	c
99 Čolić M	r r r r r r r r		r	r

In game	g Goal scored	f Missed shot	a Assist	t Technical faults	b Steal
2 2min suspension	e Earned 7m	c Committed 7m	y Yellow card	r Red Card	k Blue card
i Earned 2min.	x Block	4 4min suspension	p Pass for clear chance	s Saved shot	r Received goal