



# 26th IHF Women's World Championship

Denmark • Norway • Sweden

Group G, 3. round



Match Team Statistics

Match No. 32

## Brazil 25 - 27 Spain

(12 - 16) (13 - 11)

3.12.2023. 18:00

Attendance: 811

Arena Nord

Referees: Yann Carmaux (FRA) / Julien Mursch (FRA)

### Brazil

Players		Goals / shots										Attack					Def.			Penalties				TP	
#	Surname and name	S	Tot.	%	9m	6m	Wing	7m	FB	Brk.	LD	As.	PC	E7	E2	TF	St.	C7	Blk	YC	2m	R	B		
1	GONÇALVES DIAS MORESCHI Gabriela																								28:05
2	ALMEIDA DE PAULA Bruna	S	5/8	63	1/2					4/6		6	4			2	1	2				2			36:52
6	OLIVEIRA FERNANDES Mariane															1									8:12
7	MORENA LIMA DE ARAUJO Tamires	S	4/7	57		3/5				0/1	1/1	1									1		2		45:39
9	RODRIGUES BELO Ana Paula	S	8/10	80	5/6			2/3		1/1		1	1		2	3									26:22
11	PAULINO DE LIMA Fernanda																								0:14
12	ARENHART Bárbara	S																							26:28
20	FAIS MUNHOZ ARAUJO Larissa	S	2/6	33		1/1	1/5								1										55:45
21	CARDOSO DE CASTRO Adriana	S	1/3	33			1/2	0/1							2	1		1	1			1			29:31
23	GUARIEIRO Giulia		2/2	100						2/2			3												29:33
29	GOMES DA ROCHA Francielle	S	1/1	100						1/1		1		1		3									30:28
36	SANTOS AROUNIAN Marcela																								24:01
42	ROSA LOPES DOS SANTOS Jhennifer															1									32:18
49	MATIELI MACHADO Patricia																								4:04
77	DE ABREU ROSA Kelly																						1		10:16
88	COSTA Mariana		2/2	100			2/2									1									32:12
	Team / bench																								
	UKUPNO		25/39	64	6/8	4/6	4/9	2/4	0/0	8/11	1/1	9	8	4	3	11	2	3	1	0	6	0	0		

Goalkeepers		Saves / shots									
#	Surname and name	Tot.	%	9m	6m	Wing	7m	FB	Brk.	LD	
1	GONÇALVES DIAS MORESCHI Gabriela	4/16	25	1/2	1/3	1/3	0/1	0/1	1/6		
12	ARENHART Bárbara	5/20	25	1/3	0/5	1/2	1/3	1/3	1/5		
	TOTAL	9/36	25	2/5	1/8	2/5	1/3	1/4	2/11	0/0	

Coach: Cristiano Silva

Number of attacks: 48, Efficiency: 52%, Average Duration: 40.96 seconds

### Attack by type of defense

	Shots	9m	6m	Wing	TF	E7	E2
On def. 6-0	21/32	5/7	4/6	4/9	11	4	3
On def. 5-1	1/2	1/1	0/0	0/0	0	0	0
Fastbreak	0/0				0	0	0

### Defense by type

	Total	9m	6m	Wing	Stl.	C7	2m
Def. 6-0	19/31	3/9	6/7	2/5	2	3	0
Def. 5-1	2/2	0/0	0/0	1/1	0	0	0
Def. 4-2	1/1	0/0	1/1	0/0	0	0	0
Fastbreak	3/4				0	0	6

### Attack with superiority / minority / goalkeeper out

	Attack				Reaction		
	Att.	Eff.	Shots	TF	FB	LD	Tot.
7 on 6 (GK out)	1	100%	1/1	0	0/0	0/0	0/0
6 on 6 (GK out)	3	67%	2/3	0	0/0	0/0	0/0
6 on 5 (GK out)	3	33%	1/2	1	0/0	0/0	0/0
6 on 6	33	48%	16/23	10			
6 on 5	6	50%	3/6	0			
6 on 4	1	100%	1/1	0			
5 on 6	1	100%	1/1	0			

Player superiority / GK out counted at the end of attack (in case it changes during attack)

### Defense with superiority / minority / goalkeeper out

	Attack				Reaction		
	Att.	Eff.	Shots	TF	FB	LD	Tot.
6 on 6 (GK out)	2	50%	1/2	0	0/0	0/0	0/0
6 on 6	33	58%	19/26	7			
5 on 6	2	50%	1/1	1			
7 on 5 (GK out)	1	0%	0/1	0	0/0	0/0	0/0
6 on 5 (GK out)	2	50%	1/2	0	0/0	0/0	0/0
6 on 5	8	63%	5/8	0			

Numbers show attacking numbers of opponent. Lower efficiency of opponent means better defense of this team

# Jersey number Tot. Total shooting 6m 6m (line) shooting 9m 9m shooting Wng Wing shooting FB Fastbreak sh. 7m 7m penalty sh.  
 Brk. Breakthrough sh. LD Long distance sh. As. Assists PC Pass clear chance E7 Earned 7m pen. TF Technical faults St. Steals  
 2m 2m punishments C7. Committed 7m E2 Earned 2m pun. YC. Yellow cards R/B Red/Blue cards Blk. Blocks S Starting Line-up



# 26th IHF Women's World Championship

Denmark • Norway • Sweden

Group G, 3. round



## Match Team Statistics

Match No. 32

## Brazil 25 - 27 Spain

(12 - 16) (13 - 11)

3.12.2023. 18:00

Attendance: 811

Arena Nord

Referees: Yann Carmaux (FRA) / Julien Mursch (FRA)

### Shot distribution by player

2 B. Almeida De Paula

0/1		0/2
1/1		4/4

6 M. Oliveira Fernandes


7 T. Morena Lima De Araujo

0/1	0/1	
0/1		
1/1	1/1	1/1

1/1 lob

9 A. Rodrigues Belo

		2/2
2/2	0/1	4/5

11 F. Paulino De Lima


20 L. Fais Munhoz Araujo

0/1		1/1
	1/1	0/1

1 post 1 miss.

21 A. Cardoso De Castro

		0/1
		1/2

23 G. Guarieiro

2/2		

29 F. Gomes Da Rocha

1/1		

36 M. Santos Arunian


42 J. Rosa Lopes Dos Santos


49 P. Matieli Machado


77 K. De Abreu Rosa


88 M. Costa

1/1		1/1

### TOTAL

0/3	0/1	3/5
0/1		0/1
8/8	2/3	11/14

1 post 1 miss. 1/1 lob

### Saves distribution goalkeepers

1 G. Gonçalves Dias Moreschi

0/1		0/1
	0/1	2/2
1/5	0/1	1/5

12 B. Arenhart

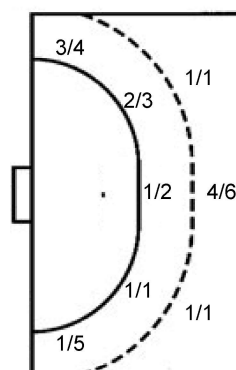
0/3		
1/2		0/1
2/8		2/5

### TOTAL

0/4		0/1
1/2	0/1	2/3
3/13	0/1	3/10

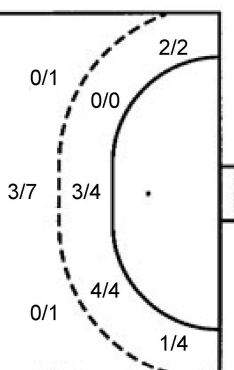
### Shots by position

#### ATTACK



7m penalties 2/4  
Fastbreak 0/0  
Breakthrough 8/11  
Long dist. 1/1

#### DEFENSE



7m penalties 2/3  
Fastbreak 3/4  
Breakthrough 9/11  
Long dist. 0/0

### Shooting statistics

Position	Goals	Sav.	Miss.	Post	Blk.	Total	%
Back (9m)	6	2	0	0	0	8	75
Line (6m)	4	2	0	0	0	6	67
Wing	4	3	1	1	0	9	44
7m penalties	2	2	0	0	0	4	50
Fastbreak	0	0	0	0	0	0	0
Breakthrough	8	3	0	0	0	11	73
<b>Total</b>	<b>24</b>	<b>12</b>	<b>1</b>	<b>1</b>	<b>0</b>	<b>38</b>	<b>63</b>

# Jersey number Tot. Total shooting 6m 6m (line) shooting 9m 9m shooting Wng Wing shooting FB Fastbreak sh. 7m 7m penalty sh.  
Brk. Breakthrough sh. LD Long distance sh. As. Assists PC Pass clear chance E7 Earned 7m pen. TF Technical faults St. Steals  
2m 2m punishments C7. Committed 7m E2 Earned 2m pun. YC. Yellow cards R/B Red/Blue cards Blk. Blocks S Starting Line-up

Handball statistics and livescore by Toma-soft ltd (www.toma-soft.hr)



# 26th IHF Women's World Championship

Denmark • Norway • Sweden

Group G, 3. round



Match Team Statistics

Match No. 32

## Brazil 25 - 27 Spain

(12 - 16) (13 - 11)

3.12.2023. 18:00

Attendance: 811

Arena Nord

Referees: Yann Carmaux (FRA) / Julien Mursch (FRA)

### Spain

Players		Goals / shots									Attack				Def.			Penalties			TP			
#	Surname and name	S	Tot.	%	9m	6m	Wing	7m	FB	Brk.	LD	As.	PC	E7	E2	TF	St.	C7	Blk	YC		2m	R	B
6	CAMPOS COSTA Carmen											1												
8	ARDERIUS MARTIN Silvia		3/5	60				1/2	0/1	2/2		3			2	2	1	1						31:14
16	CASTELLANOS SOANEZ Mercedes	S																						17:18
18	ECHEVERRIA MARTINEZ Maitane	S	0/2	0			0/2							1	1		1							43:45
20	GONZALEZ DE GARIBAY BARBA Amaia																							
22	GONZALEZ ORTEGA Lara	S																		1	1			33:35
27	SO DELGADO-PINTO Danila Patricia																							14:45
30	LOPEZ JIMENEZ Soledad	S	4/4	100			2/2		2/2							1		2						49:00
33	GASSAMA CISSOKHO Kaba		3/3	100		3/3								1										33:26
34	FERNANDEZ FRAGA Alicia		3/4	75	1/1			1/1		1/2		6	1		2	1	1							28:08
48	ZOQBI DE PAULA Darly																						1	41:37
52	PEREZ BUFORN Paulina		2/4	50	0/1	1/1	1/2									1								13:54
58	PRIETO O'MULLONY Maria																							
61	TCHAPTCHET DEFO Lysa	S	4/5	80		3/4				1/1				1	1	1								31:02
62	ARCOS POVEDA Paula	S	5/6	83	0/1				1/1	4/4		2	2				1	1	1				1	55:24
99	GONZALEZ ALVAREZ Mireya	S	3/8	38	2/6					1/2		5	2			1								26:52
	Team / bench																							
	UKUPNO		27/41	66	3/9	7/8	3/6	2/3	3/4	9/11	0/0	17	5	3	6	8	4	4	0	1	5	0	0	

Goalkeepers		Saves / shots								
#	Surname and name	Tot.	%	9m	6m	Wing	7m	FB	Brk.	LD
16	CASTELLANOS SOANEZ Mercedes	1/12	8	0/2	0/1	0/2	1/3		0/4	
48	ZOQBI DE PAULA Darly	11/24	46	2/6	2/5	3/5	1/1		3/7	
	TOTAL	12/36	33	2/8	2/6	3/7	2/4	1/0	3/11	0/0

Coach: Ambrosio Jose Martin Cedres

Number of attacks: 48, Efficiency: 56%, Average Duration: 33.94 seconds

### Attack by type of defense

	Shots	9m	6m	Wing	TF	E7	E2
On def. 6-0	19/31	3/9	6/7	2/5	7	3	6
On def. 5-1	2/2	0/0	0/0	1/1	1	0	0
On def. 4-2	1/1	0/0	1/1	0/0	0	0	0
Fastbreak	3/4				0	0	0

### Defense by type

	Total	9m	6m	Wing	Stl.	C7	2m
Def. 6-0	21/32	5/7	4/6	4/9	4	4	0
Def. 5-1	1/2	1/1	0/0	0/0	0	0	0
Fastbreak	0/0				0	0	5

### Attack with superiority / minority / goalkeeper out

	Attack				Reaction		
	Att.	Eff.	Shots	TF	FB	LD	Tot.
6 on 6 (GK out)	2	50%	1/2	0	0/0	0/0	0/0
6 on 6	33	58%	19/26	7			
5 on 6	2	50%	1/1	1			
7 on 5 (GK out)	1	0%	0/1	0	0/0	0/0	0/0
6 on 5 (GK out)	2	50%	1/2	0	0/0	0/0	0/0
6 on 5	8	63%	5/8	0			

Player superiority / GK out counted at the end of attack (in case it changes during attack)

### Defense with superiority / minority / goalkeeper out

	Attack				Reaction		
	Att.	Eff.	Shots	TF	FB	LD	Tot.
7 on 6 (GK out)	1	100%	1/1	0	0/0	0/0	0/0
6 on 6 (GK out)	3	67%	2/3	0	0/0	0/0	0/0
6 on 5 (GK out)	3	33%	1/2	1	0/0	0/0	0/0
6 on 6	33	48%	16/23	10			
6 on 5	6	50%	3/6	0			
6 on 4	1	100%	1/1	0			
5 on 6	1	100%	1/1	0			

Numbers show attacking numbers of opponent. Lower efficiency of opponent means better defense of this team

# Jersey number Tot. Total shooting 6m 6m (line) shooting 9m 9m shooting Wng Wing shooting FB Fastbreak sh. 7m 7m penalty sh.  
 Brk. Breakthrough sh. LD Long distance sh. As. Assists PC Pass clear chance E7 Earned 7m pen. TF Technical faults St. Steals  
 2m 2m punishments C7. Committed 7m E2 Earned 2m pun. YC. Yellow cards R/B Red/Blue cards Blk. Blocks S Starting Line-up



# 26th IHF Women's World Championship

Denmark • Norway • Sweden

Group G, 3. round



## Match Team Statistics

Match No. 32

## Brazil 25 - 27 Spain

(12 - 16) (13 - 11)

3.12.2023. 18:00

Attendance: 811

Arena Nord

Referees: Yann Carmaux (FRA) / Julien Mursch (FRA)

## Shot distribution by player

### 6 C. Campos Costa


### 8 S. Arderius Martin

1/1		
0/1		
1/2	1/1	

### 18 M. Echeverria Martinez

		0/1

1 miss.

### 20 A. Gonzalez De Garibay Barba


### 22 L. Gonzalez Ortega


### 27 D. So Delgado-Pinto


### 30 S. Lopez Jimenez

2/2		1/1

1/1 lob

### 33 K. Gassama Cissokho

1/1		2/2

### 34 A. Fernandez Fraga

		1/1
1/2		1/1

### 52 P. Perez Bufom

		0/1
1/1		1/2

### 58 M. Prieto O'Mullony


### 61 L. Tchaptchet Defo

1/1		
1/1		0/1
2/2		

### 62 P. Arcos Poveda

1/1		1/1
	1/1	
1/1		1/1

1 miss.

### 99 M. Gonzalez Alvarez

1/1		
1/2		1/2

2 miss. 1 block

## TOTAL

4/4		1/1
1/2	1/1	1/3
10/13	1/1	7/10

4 miss. 1 block 1/1 lob

## Saves distribution goalkeepers

### 16 M. Castellanos Soanez

		0/1
		1/1
0/4		0/5

### 48 D. Zoqbi De Paula

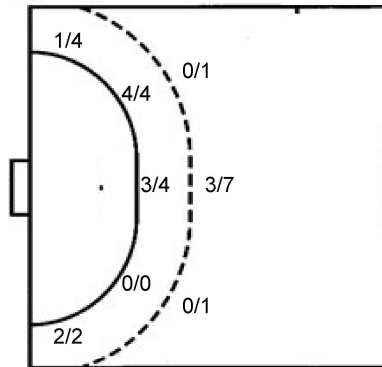
3/3	1/1	2/4
1/1		
0/4	1/2	3/9

## TOTAL

3/3	1/1	2/5
1/1		1/1
0/8	1/2	3/14

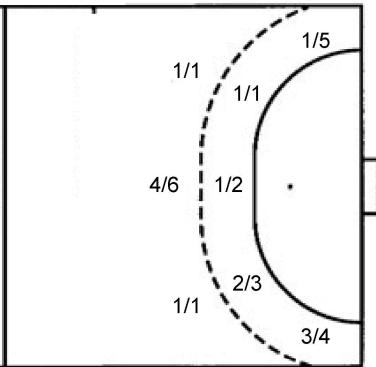
## Shots by position

### ATTACK



7m penalties	2/3
Fastbreak	3/4
Breakthrough	9/11
Long dist.	0/0

### DEFENSE



7m penalties	2/4
Fastbreak	0/0
Breakthrough	8/11
Long dist.	1/1

## Shooting statistics

Position	Goals	Sav.	Miss.	Post	Blk.	Total	%
Back (9m)	3	2	3	0	1	9	33
Line (6m)	7	1	0	0	0	8	88
Wing	3	2	1	0	0	6	50
7m penalties	2	1	0	0	0	3	67
Fastbreak	3	1	0	0	0	4	75
Breakthrough	9	2	0	0	0	11	82
<b>Total</b>	<b>27</b>	<b>9</b>	<b>4</b>	<b>0</b>	<b>1</b>	<b>41</b>	<b>66</b>

# Jersey number Tot. Total shooting 6m 6m (line) shooting 9m 9m shooting Wng Wing shooting FB Fastbreak sh. 7m 7m penalty sh.  
 Brk. Breakthrough sh. LD Long distance sh. As. Assists PC Pass clear chance E7 Earned 7m pen. TF Technical faults St. Steals  
 2m 2m punishments C7. Committed 7m E2 Earned 2m pun. YC. Yellow cards R/B Red/Blue cards Blk. Blocks S Starting Line-up

Handball statistics and livescore by Toma-soft ltd (www.toma-soft.hr)



# 26th IHF Women's World Championship

## Denmark • Norway • Sweden

### Group G, 3. round



#### Match Team Statistics

Match No. 32

### Brazil 25 - 27 Spain

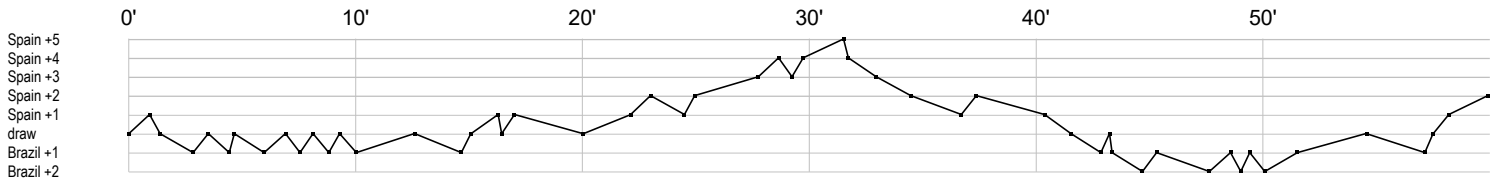
(12 - 16) (13 - 11)

3.12.2023. 18:00

Attendance: 811

Arena Nord

Referees: Yann Carmaux (FRA) / Julien Mursch (FRA)



#### Brazil

1	Gonçalves					r							r	r	s	r	s	r	s	r	r	r	s	r	r													
2	Almeida De		g	a	a	a	g	gb2c			g	p		t	c	2		f	f		a	a	t	g		a			p	p	pf							
6	Oliveira												t																									
7	Morena Lima			g														xf	g		g	2		a	f	g	2			f								
9	Rodrigues						p		g		t	t	i				g		t						a	g			f	g	g	i				f		g
11	Paulino De																																					
12	Arenhart B		r	r	r	s	r	r		s	r	s	r	r	r		s	r	r	s	r		r	r	r													
20	Fais Munhoz						f																		f	e			g				g			f	f	
21	Cardoso De						g									c	2		f					e		ie	f	b										
23	Guareiro G																											pp			p	g	g					
29	Gomes Da		t				g								a	e		t																		t		
36	Santos																																					
42	Rosa Lopes																																					
49	Matieli																																					
77	De Abreu																																	2				
88	Costa M									g																												

#### Spain

6	Campos																																															
8	Arderius									g		f		a	g		bf					g		a				2c		i		t				i	t	a										
16	Castellanos		r	r	r	r	r	r		r		r	s	r																																		
18	Echeverria									bie	f					2																					f											
20	Gonzalez De																																															
22	Gonzalez							y																												2												
27	So																																															
30	Lopez		g												g	c	c		g																		g											
33	Gassama														e				g	g		g																										
34	Fernandez														g	a	i	p	a		a									a		f	t		i	g	g	a	ba									
48	Zoqi De										s	2							r	s	r	s	r		r		r	s	s	r	r	r	r	r	s		r	r	s	s	r	ss						
52	Perez Buforn																	t																		f		g	f									
58	Prieto																																															
61	Tchaptchet									g		g	g	t																								f										
62	Arcos Poveda		a	f																																		g	2c		g	p	g	p	a		g	g
99	Gonzalez									g	a	f	a		p		a	g									f	g		a		f	a	f	t	f		p										

In game	g	Goal scored	f	Missed shot	a	Assist	t	Technical faults	b	Steal	
2	2min suspension	e	Earned 7m	c	Committed 7m	y	Yellow card	r	Red Card	k	Blue card
i	Earned 2min.	x	Block	4	4min suspension	p	Pass for clear chance	s	Saved shot	r	Received goal