



26th IHF Women's World Championship

Denmark • Norway • Sweden

Group A, 2. round



Match Team Statistics

Match No. 30

Senegal 18 - 26 Sweden

(12 - 14) (6 - 12)

3.12.2023. 18:00

Attendance: 7098

Scandinaviu

Referees: Cristina Lovin (ROU) / Simona Stancu (ROU)

Senegal

Players		Goals / shots									Attack					Def.			Penalties			TP			
#	Surname and name	S	Tot.	%	9m	6m	Wing	7m	FB	Brk.	LD	As.	PC	E7	E2	TF	St.	C7	Blk	YC	2m	R	B		
1	SALL Fama																								2:44
7	CAMARA Doungou		2/6	33	1/5					1/1			1			2	2								48:03
10	CISSOKHO Aminata		1/2	50			1/2											1							23:27
13	SAGNA Soukeina	S	8/13	62	6/10	0/1		2/2				5	3	1		5	1	1							56:40
14	KEITA Fanta	S	1/4	25	0/3	1/1								1	1	2									48:08
15	NDIAYE Hawa Ramatou	S	2/4	50		2/4						1													49:56
16	TOUBISSA ELBECO Justicia	S																							52:37
19	SECK Khady																								0:51
21	DIAWARA Mathita																								1:22
27	SY Dienaba	S	1/2	50		1/1	0/1									1		1				1			43:04
28	KAMDOP Laura																								
31	FALL Marie	S	1/2	50		1/2																	1		38:48
44	DAPINA Raissa	S	2/3	67			2/3									1									53:34
55	SENE Ndeye Sokhna Camara																								
77	KEBE Sophie																								
92	CAMARA Coura		0/1	0	0/1																				0:46
	Team / bench																							1	
	UKUPNO		18/37	49	7/19	5/9	3/6	2/2	0/0	1/1	0/0	6	4	2	1	11	3	3	0	1	2	0	0		

Goalkeepers		Saves / shots								
#	Surname and name	Tot.	%	9m	6m	Wing	7m	FB	Brk.	LD
1	SALL Fama	0/3	0				0/1	0/1	0/1	
16	TOUBISSA ELBECO Justicia	9/31	29	4/10	1/4	3/7	0/2	1/3	0/5	
55	SENE Ndeye Sokhna Camara									
	TOTAL	9/34	26	4/10	1/4	3/7	0/3	1/4	0/6	0/0

Coach: Yacine Messaoudi

Number of attacks: 46, Efficiency: 39%, Average Duration: 51.52 seconds

Attack by type of defense

	Shots	9m	6m	Wing	TF	E7	E2
On def. 6-0	16/35	7/19	5/9	3/6	11	2	1
Fastbreak	0/0				0	0	0

Defense by type

	Total	9m	6m	Wing	Stl.	C7	2m
Def. 6-0	19/30	6/11	3/5	4/8	3	3	0
Fastbreak	3/4				0	0	2

Attack with superiority / minority / goalkeeper out

	Attack				Reaction		
	Att.	Eff.	Shots	TF	FB	LD	Tot.
7 on 6 (GK out)	7	71%	5/7	0	1/1	0/1	1/2
6 on 6	35	34%	12/25	10			
6 on 5	3	33%	1/2	1			
5 on 6	1	0%	0/1	0			

Player superiority / GK out counted at the end of attack (in case it changes during attack)

Defense with superiority / minority / goalkeeper out

	Attack				Reaction		
	Att.	Eff.	Shots	TF	FB	LD	Tot.
7 on 6 (GK out)	3	67%	2/3	0	0/0	0/0	0/0
6 on 6 (GK out)	2	50%	1/2	0	0/0	0/0	0/0
6 on 6	40	53%	21/29	11			
6 on 5	2	100%	2/2	0			

Numbers show attacking numbers of opponent. Lower efficiency of opponent means better defense of this team

Jersey number Tot. Total shooting 6m 6m (line) shooting 9m 9m shooting Wng Wing shooting FB Fastbreak sh. 7m 7m penalty sh.
 Brk. Breakthrough sh. LD Long distance sh. As. Assists PC Pass clear chance E7 Earned 7m pen. TF Technical faults St. Steals
 2m 2m punishments C7. Committed 7m E2 Earned 2m pun. YC. Yellow cards R/B Red/Blue cards Blk. Blocks S Starting Line-up

Handball statistics and livescore by Toma-soft ltd (www.toma-soft.hr)



26th IHF Women's World Championship

Denmark • Norway • Sweden

Group A, 2. round



Match Team Statistics

Match No. 30

Senegal 18 - 26 Sweden

(12 - 14) (6 - 12)

3.12.2023. 18:00

Attendance: 7098

Scandinaviavium

Referees: Cristina Lovin (ROU) / Simona Stancu (ROU)

Shot distribution by player

7 D. Camara

1/1		
0/1	0/1	
1/1		0/1

1 miss.

10 A. Cissokho

		1/1

1 post

13 S. Sagna

2/4	1/1	
		1/1
4/4	0/1	

1 post 1 miss.

14 F. Keita

	0/1	
		1/1

1 post 1 block

15 H. Ndiaye

		1/1
	1/2	

0/1 lob

19 K. Seck

21 M. Diawara

27 D. Sy

		1/2

28 L. Kamdop

31 M. Fall

		1/1
	0/1	

44 R. Dapina

		0/1
1/1		

1/1 lob

77 S. Kebe

92 C. Camara

1 block

TOTAL

3/5	1/1	2/2
0/1	0/2	1/2
6/6	1/4	3/5

3 post 2 miss. 2 block 1/2 lob

Saves distribution goalkeepers

1 F. Sall

		0/1
0/2		

16 J. Toubissa

Elbeco		
2/4		1/5
	1/2	0/2
3/8	1/1	1/9

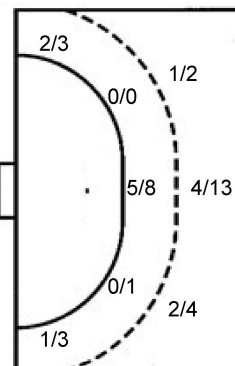
55 N. Sene

TOTAL

2/4		1/6
	1/2	0/2
3/10	1/1	1/9

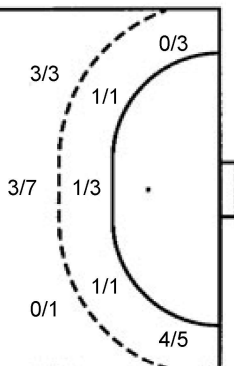
Shots by position

ATTACK



7m penalties	2/2
Fastbreak	0/0
Breakthrough	1/1
Long dist.	0/0

DEFENSE



7m penalties	3/3
Fastbreak	3/4
Breakthrough	6/6
Long dist.	1/2

Shooting statistics

Position	Goals	Sav.	Miss.	Post	Blk.	Total	%
Back (9m)	7	6	2	2	2	19	37
Line (6m)	5	4	0	0	0	9	56
Wing	3	2	0	1	0	6	50
7m penalties	2	0	0	0	0	2	100
Fastbreak	0	0	0	0	0	0	0
Breakthrough	1	0	0	0	0	1	100
Total	18	12	2	3	2	37	49

Jersey number Tot. Total shooting 6m 6m (line) shooting 9m 9m shooting Wng Wing shooting FB Fastbreak sh. 7m 7m penalty sh.
 Brk. Breakthrough sh. LD Long distance sh. As. Assists PC Pass clear chance E7 Earned 7m pen. TF Technical faults St. Steals
 2m 2m punishments C7. Committed 7m E2 Earned 2m pun. YC. Yellow cards R/B Red/Blue cards Blk. Blocks S Starting Line-up

Handball statistics and livescore by Toma-soft ltd (www.toma-soft.hr)



26th IHF Women's World Championship

Denmark • Norway • Sweden

Group A, 2. round



Match Team Statistics

Match No. 30

Senegal 18 - 26 Sweden

(12 - 14) (6 - 12)

3.12.2023. 18:00

Attendance: 7098

Scandinaviu

Referees: Cristina Lovin (ROU) / Simona Stancu (ROU)

Sweden

#	Surname and name	S	Goals / shots								Attack					Def.			Penalties				TP							
			Tot.	%	9m	6m	Wing	7m	FB	Brk.	LD	As.	PC	E7	E2	TF	St.	C7	Blk	YC	2m	R		B						
1	BUNDSSEN Johanna	S	1/1	100											1/1	1														58:25
3	KOPPANG Nina																													0:01
4	MELLEGGARD Olivia	S	2/4	50		1/1			1/1	0/1					0/1															31:36
8	ROBERTS Jamina	S	6/8	75	1/3	1/1									4/4	4	3													53:14
10	LUNDSTRÖM Mathilda	S	2/3	67					2/3									1												33:00
12	SCHJÖTT Irma																													
17	DANO Nina		2/2	100	1/1										1/1	1	1	1	1											13:56
19	LAGERQUIST Anna	S	0/1	0		0/1																								48:11
23	LINDQVIST Emma	S	2/3	67	0/1											4	1													47:16
24	HAGMAN Nathalie		5/7	71		0/1		2/3	2/2	1/1						1	1	1	1											27:00
29	THORLEIFSDOTTIR Kristin		1/3	33	1/3											1	2													37:55
35	HVENFELT Sofia																													19:47
38	HANSSON Elin		0/2	0				0/2																						30:29
42	CARLSON Jenny	S	4/4	100	2/2	1/1									1/1	1														17:33
44	DE JONG Daniela		1/1	100	1/1																									0:46
54	AXNER Tyra																													0:51
	Team / bench																													
	UKUPNO		26/39	67	6/11	3/5	4/8	3/3	3/4	6/6	1/2	10	9	3	2	11	3	2	2	2	2	0	0							

#	Surname and name	Saves / shots								
		Tot.	%	9m	6m	Wing	7m	FB	Brk.	LD
1	BUNDSSEN Johanna	12/30	40	6/13	4/9	2/5	0/2		0/1	
12	SCHJÖTT Irma									
	TOTAL	12/30	40	6/13	4/9	2/5	0/2	1/0	0/1	0/0

Coach: Tomas Axner

Number of attacks: 47, Efficiency: 55%, Average Duration: 25.81 seconds

Attack by type of defense

	Shots	9m	6m	Wing	TF	E7	E2
On def. 6-0	19/30	6/11	3/5	4/8	11	3	2
Fastbreak	3/4				0	0	0

Defense by type

	Total	9m	6m	Wing	Stl.	C7	2m
Def. 6-0	16/35	7/19	5/9	3/6	3	2	0
Fastbreak	0/0				0	0	2

Attack with superiority / minority / goalkeeper out

	Attack				Reaction		
	Att.	Eff.	Shots	TF	FB	LD	Tot.
7 on 6 (GK out)	3	67%	2/3	0	0/0	0/0	0/0
6 on 6 (GK out)	2	50%	1/2	0	0/0	0/0	0/0
6 on 6	40	53%	21/29	11			
6 on 5	2	100%	2/2	0			

Player superiority / GK out counted at the end of attack (in case it changes during attack)

Defense with superiority / minority / goalkeeper out

	Attack				Reaction		
	Att.	Eff.	Shots	TF	FB	LD	Tot.
7 on 6 (GK out)	7	71%	5/7	0	1/1	0/1	1/2
6 on 6	35	34%	12/25	10			
6 on 5	3	33%	1/2	1			
5 on 6	1	0%	0/1	0			

Numbers show attacking numbers of opponent. Lower efficiency of opponent means better defense of this team

Jersey number Tot. Total shooting 6m 6m (line) shooting 9m 9m shooting Wng Wing shooting FB Fastbreak sh. 7m 7m penalty sh.
 Brk. Breakthrough sh. LD Long distance sh. As. Assists PC Pass clear chance E7 Earned 7m pen. TF Technical faults St. Steals
 2m 2m punishments C7. Committed 7m E2 Earned 2m pun. YC. Yellow cards R/B Red/Blue cards Blk. Blocks S Starting Line-up



26th IHF Women's World Championship

Denmark • Norway • Sweden

Group A, 2. round



Match Team Statistics

Match No. 30

Senegal 18 - 26 Sweden

(12 - 14) (6 - 12)

3.12.2023. 18:00

Attendance: 7098

Scandinaviavium

Referees: Cristina Lovin (ROU) / Simona Stancu (ROU)

Shot distribution by player

3 N. Koppang

4 O. Mellegard

	0/1	
2/2		

1 miss.

8 J. Roberts

		2/2
		4/5

1 post

10 M. Lundström

		1/2
		1/1

17 N. Dano

		1/1
1/1		

19 A. Lagerquist

0/1		

23 E. Lindqvist

1/2		1/1

24 N. Hagman

1/2		
	1/1	1/1
1/1		1/1

1 block

29 K. Thorleifsdottir

1/2		
0/1		

35 S. Hvenfelt

38 E. Hansson

	0/1	

1 miss.

42 J. Carlson

		1/1
		1/1
1/1		1/1

44 D. De Jong

1/1		

54 T. Axné

TOTAL

2/4		5/6
	1/2	2/2
7/10	0/1	8/9

1 post 2 miss. 1 block

Saves distribution goalkeepers

1 J. Bundsen

2/5	0/1	0/2
1/1	2/2	1/2
0/6	3/4	2/5

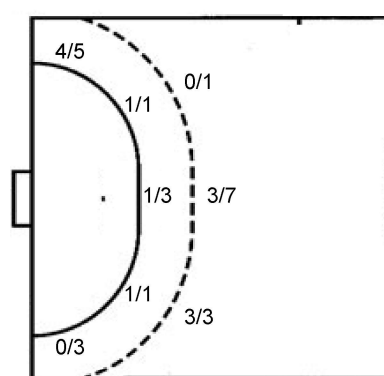
12 I. Schjött

TOTAL

2/5	0/1	0/2
1/1	2/2	1/2
0/6	3/4	2/5

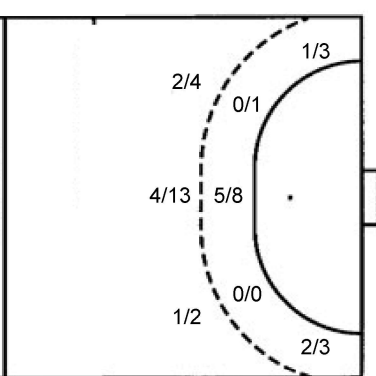
Shots by position

ATTACK



7m penalties 3/3
Fastbreak 3/4
Breakthrough 6/6
Long dist. 1/2

DEFENSE



7m penalties 2/2
Fastbreak 0/0
Breakthrough 1/1
Long dist. 0/0

Shooting statistics

Position	Goals	Sav.	Miss.	Post	Blk.	Total	%
Back (9m)	6	4	0	1	0	11	55
Line (6m)	3	1	0	0	1	5	60
Wing	4	3	1	0	0	8	50
7m penalties	3	0	0	0	0	3	100
Fastbreak	3	1	0	0	0	4	75
Breakthrough	6	0	0	0	0	6	100
Total	25	9	1	1	1	37	68

Jersey number Tot. Total shooting 6m 6m (line) shooting 9m 9m shooting Wng Wing shooting FB Fastbreak sh. 7m 7m penalty sh.
Brk. Breakthrough sh. LD Long distance sh. As. Assists PC Pass clear chance E7 Earned 7m pen. TF Technical faults St. Steals
2m 2m punishments C7. Committed 7m E2 Earned 2m pun. YC. Yellow cards R/B Red/Blue cards Blk. Blocks S Starting Line-up

Handball statistics and livescore by Toma-soft ltd (www.toma-soft.hr)

