



26th IHF Women's World Championship

Denmark • Norway • Sweden

Group A, 2. round



Match Team Statistics

Match No. 29

Croatia 39 - 13 P.R. of China

(19 - 7) (20 - 6)

3.12.2023. 15:30

Attendance: 3061

Scandinaviu

Referees: Bruna Correa (BRA) / Renata Correa (BRA)

Croatia

Players		Goals / shots										Attack				Def.			Penalties				TP			
#	Surname and name	S	Tot.	%	9m	6m	Wing	7m	FB	Brk.	LD	As.	PC	E7	E2	TF	St.	C7	Blk	YC	2m	R		B		
1	BEŠEN Lucija											2				1									30:00	
2	ZADRAVEC Nikolina	S	3/5	60			3/3		0/2						1	1									27:42	
3	POSAVEC Paula	S	2/2	100			2/2						1									1			37:08	
6	ŠENVALD Sara	S												1		3	1	1							23:47	
8	POSAVEC Stela											1				2									24:59	
9	MIČIJEVIĆ Camila	S	2/4	50	1/3					1/1		2	1				1		2	1					19:24	
10	MILOSAVLJEVIĆ Dejana	S	5/6	83				2/2	1/1	2/3		2	1	1		1									34:31	
17	JEŽIĆ Katarina		2/2	100		1/1			1/1			1	3	1			1	2							30:07	
23	PAVLOVIĆ Katarina		2/6	33	0/1				1/3	1/2		3				1									25:52	
25	BURIĆ Lara		5/7	71		0/1	2/2		2/3	1/1							1								30:00	
26	BRKIC Mia		5/7	71		4/5	1/2														1				31:15	
28	ŠIMARA Andrea		5/6	83			2/2		3/4			2	2												24:39	
38	BARIŠIĆ Tina		2/4	50	0/1			0/1		2/2		4	1			3	3								16:37	
77	BLAŽEVIĆ Valentina	S	5/5	100	2/2			1/1		2/2		2				1									12:14	
88	PRKAČIN Kristina		1/2	50	1/2							1	1					1							23:59	
91	PIJEVIĆ Tea	S										1	1				1								27:46	
	Team / bench																									
	UKUPNO		39/56	70	4/9	5/7	10/11	3/4	8/14	9/11	0/0	21	11	4	1	12	8	4	2	1	2	0	0			

Goalkeepers		Saves / shots									
#	Surname and name	Tot.	%	9m	6m	Wing	7m	FB	Brk.	LD	
1	BEŠEN Lucija	9/15	60	6/9	0/1	3/4	0/1				
91	PIJEVIĆ Tea	11/18	61	4/9	1/1	3/3	0/2		3/3		
	TOTAL	20/33	61	10/18	1/2	6/7	0/3	0/0	3/3	0/0	

Coach: Ivica Obrvan

Number of attacks: 66, Efficiency: 59%, Average Duration: 21.59 seconds

Attack by type of defense

	Shots	9m	6m	Wing	TF	E7	E2
On def. 6-0	1/1	0/0	0/0	1/1	0	2	1
On def. 5-1	18/26	3/8	4/6	5/5	8	1	0
On def. 4-2	7/9	1/1	1/1	3/4	4	1	0
Fastbreak	8/14				0	0	0

Defense by type

	Total	9m	6m	Wing	Stl.	C7	2m
Def. 6-0	10/34	8/23	1/2	1/6	8	4	0
Fastbreak	0/0				0	0	2

Attack with superiority / minority / goalkeeper out

	Attack				Reaction		
	Att.	Eff.	Shots	TF	FB	LD	Tot.
7 on 6 (GK out)	1	0%	0/1	0	0/0	0/0	0/0
6 on 6 (GK out)	3	33%	1/2	1	0/0	0/0	0/0
6 on 6	56	61%	34/46	10			
6 on 5	5	60%	3/4	1			
5 on 6	1	100%	1/1	0			

Player superiority / GK out counted at the end of attack (in case it changes during attack)

Defense with superiority / minority / goalkeeper out

	Attack				Reaction		
	Att.	Eff.	Shots	TF	FB	LD	Tot.
6 on 6 (GK out)	2	0%	0/0	2	0/0	0/0	0/0
6 on 6	55	22%	12/32	23			
5 on 6	1	0%	0/1	0			
6 on 5	5	20%	1/3	2			

Numbers show attacking numbers of opponent. Lower efficiency of opponent means better defense of this team

Jersey number Tot. Total shooting 6m 6m (line) shooting 9m 9m shooting Wng Wing shooting FB Fastbreak sh. 7m 7m penalty sh.
 Brk. Breakthrough sh. LD Long distance sh. As. Assists PC Pass clear chance E7 Earned 7m pen. TF Technical faults St. Steals
 2m 2m punishments C7. Committed 7m E2 Earned 2m pun. YC. Yellow cards R/B Red/Blue cards Blk. Blocks S Starting Line-up



26th IHF Women's World Championship

Denmark • Norway • Sweden

Group A, 2. round



Match Team Statistics

Match No. 29

Croatia 39 - 13 P.R. of China

(19 - 7) (20 - 6)

3.12.2023. 15:30

Attendance: 3061

Scandinaviavium

Referees: Bruna Correa (BRA) / Renata Correa (BRA)

Shot distribution by player

2 N. Zadravec

1/1		1/1
	0/1	1/1

1 miss.

3 P. Posavec

		1/1
1/1		

6 S. Šenvald

8 S. Posavec

9 Č. Mičijević

2/3		0/1

10 D. Milosavljević

	1/1	2/2
		0/1
		2/2

17 K. Ježić

		1/1
1/1		

23 K. Pavlović

0/2		0/1
1/1		0/1

1/1 lob

25 L. Burić

		1/1
1/1	0/1	2/2

1 post 1/1 lob

26 M. Brkic

1/1		1/1
	2/2	1/1

1 post 1 miss.

28 A. Šimara

		1/1
1/2		1/1
		1/1

1/1 lob

38 T. Barišić

	1/1	0/1
		0/1
1/1		

77 V. Blažević

	1/1	1/1
1/1	2/2	

88 K. Prkačin

		1/1

1 miss.

TOTAL

3/4	3/3	7/9
2/5		4/7
6/6	4/6	7/8

2 post 3 miss. 3/3 lob

Saves distribution goalkeepers

1 L. Bešen

1/1	2/2	
2/3	2/2	1/2
	1/3	0/1

91 T. Pijević

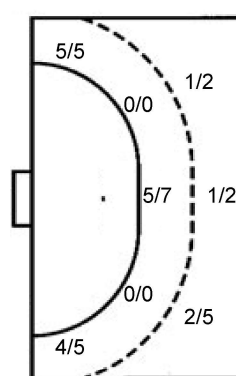
0/3		2/3
1/1	1/1	2/2
2/2	1/2	2/4

TOTAL

1/4	2/2	2/3
3/4	3/3	3/4
2/2	2/5	2/5

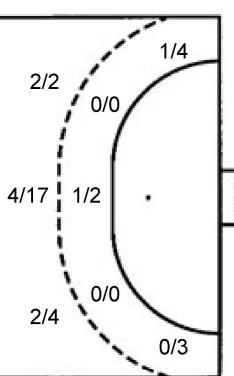
Shots by position

ATTACK



7m penalties 3/4
Fastbreak 8/14
Breakthrough 9/11
Long dist. 0/0

DEFENSE



7m penalties 3/4
Fastbreak 0/0
Breakthrough 0/3
Long dist. 0/0

Shooting statistics

Position	Goals	Sav.	Miss.	Post	Blk.	Total	%
Back (9m)	4	4	1	0	0	9	44
Line (6m)	5	1	0	1	0	7	71
Wing	9	0	1	0	0	10	90
7m penalties	3	1	0	0	0	4	75
Fastbreak	8	4	1	1	0	14	57
Breakthrough	9	2	0	0	0	11	82
Total	38	12	3	2	0	55	69

Jersey number Tot. Total shooting 6m 6m (line) shooting 9m 9m shooting Wng Wing shooting FB Fastbreak sh. 7m 7m penalty sh.
Brk. Breakthrough sh. LD Long distance sh. As. Assists PC Pass clear chance E7 Earned 7m pen. TF Technical faults St. Steals
2m 2m punishments C7. Committed 7m E2 Earned 2m pun. YC. Yellow cards R/B Red/Blue cards Blk. Blocks S Starting Line-up

Handball statistics and livescore by Toma-soft ltd (www.toma-soft.hr)



26th IHF Women's World Championship

Denmark • Norway • Sweden

Group A, 2. round



Match Team Statistics

Match No. 29

Croatia 39 - 13 P.R. of China

(19 - 7) (20 - 6)

3.12.2023. 15:30

Attendance: 3061

Scandinaviu

Referees: Bruna Correa (BRA) / Renata Correa (BRA)

P.R. of China

Players		Goals / shots									Attack					Def.			Penalties				TP		
#	Surname and name	S	Tot.	%	9m	6m	Wing	7m	FB	Brk.	LD	As.	PC	E7	E2	TF	St.	C7	Blk	YC	2m	R	B		
1	LU Chang	S																							35:01
5	WANG Jiayi																								
9	JIANG Yishan		0/1	0	0/1																				11:09
11	LIU Chan	S	3/7	43	3/6					0/1				1		5	2	2					2		48:52
12	LI Xiaoqing	S	4/6	67	2/4	1/1		1/1				1	3	1		6		1							33:25
13	ZHAO Xinyao		0/1	0			0/1									1	1								13:50
14	ZHOU Mengxue		1/6	17	1/4					0/2				1		3									17:53
17	HU Yunuo																								23:26
18	WEI Nana		1/3	33	0/2			1/1					1			2									23:56
21	ZHANG Guisi														1										22:51
22	MA Jie		0/1	0			0/1																		19:08
23	ZHUANG Hongyan	S	0/1	0			0/1							1		1		1							40:50
27	GONG Lei	S	0/1	0		0/1										1									25:44
28	LIU Xuedan		1/3	33	0/2			1/1					2		1	4									24:37
34	JIN Mengqing	S	2/5	40	2/4			0/1					2			3									35:23
53	LIU Yuting	S	1/4	25			1/4																		43:55
	Team / bench																1								
	UKUPNO		13/39	33	8/23	1/2	1/7	3/4	0/0	0/3	0/0	1	8	4	2	27	3	4	0	0	2	0	0		

Goalkeepers		Saves / shots								
#	Surname and name	Tot.	%	9m	6m	Wing	7m	FB	Brk.	LD
1	LU Chang	7/33	21	4/5	0/2	0/8	1/3	2/8	0/7	
17	HU Yunuo	5/18	28	0/3	1/4	0/2	0/1	2/4	2/4	
	TOTAL	12/51	24	4/8	1/6	0/10	1/4	4/12	2/11	0/0

Coach: Yongli Zheng

Number of attacks: 63, Efficiency: 21%, Average Duration: 34.51 seconds

Attack by type of defense

	Shots	9m	6m	Wing	TF	E7	E2
On def. 6-0	10/34	8/23	1/2	1/6	27	4	2
Fastbreak	0/0				0	0	0

Defense by type

	Total	9m	6m	Wing	Stl.	C7	2m
Def. 6-0	1/1	0/0	0/0	1/1	0	1	0
Def. 5-1	18/26	3/8	4/6	5/5	2	2	0
Def. 4-2	7/9	1/1	1/1	3/4	1	1	0
Fastbreak	8/14				0	0	2

Attack with superiority / minority / goalkeeper out

	Attack				Reaction		
	Att.	Eff.	Shots	TF	FB	LD	Tot.
6 on 6 (GK out)	2	0%	0/0	2	0/0	0/0	0/0
6 on 6	55	22%	12/32	23			
5 on 6	1	0%	0/1	0			
6 on 5	5	20%	1/3	2			

Player superiority / GK out counted at the end of attack (in case it changes during attack)

Defense with superiority / minority / goalkeeper out

	Attack				Reaction		
	Att.	Eff.	Shots	TF	FB	LD	Tot.
7 on 6 (GK out)	1	0%	0/1	0	0/0	0/0	0/0
6 on 6 (GK out)	3	33%	1/2	1	0/0	0/0	0/0
6 on 6	56	61%	34/46	10			
6 on 5	5	60%	3/4	1			
5 on 6	1	100%	1/1	0			

Numbers show attacking numbers of opponent. Lower efficiency of opponent means better defense of this team

Jersey number Tot. Total shooting 6m 6m (line) shooting 9m 9m shooting Wng Wing shooting FB Fastbreak sh. 7m 7m penalty sh.
 Brk. Breakthrough sh. LD Long distance sh. As. Assists PC Pass clear chance E7 Earned 7m pen. TF Technical faults St. Steals
 2m 2m punishments C7. Committed 7m E2 Earned 2m pun. YC. Yellow cards R/B Red/Blue cards Blk. Blocks S Starting Line-up

Handball statistics and livescore by Toma-soft ltd (www.toma-soft.hr)



26th IHF Women's World Championship

Denmark • Norway • Sweden

Group A, 2. round



Match Team Statistics

Match No. 29

Croatia 39 - 13 P.R. of China

(19 - 7) (20 - 6)

3.12.2023. 15:30

Attendance: 3061

Scandinaviavium

Referees: Bruna Correa (BRA) / Renata Correa (BRA)

Shot distribution by player

5 J. Wang	9 Y. Jiang	11 C. Liu	12 X. Li	13 X. Zhao	14 M. Zhou	18 N. Wei
		2/2 0/1 0/1			0/1	
		0/1	1/1	0/1	0/1 0/1	
	0/1		1/1 1/1		0/1 1/2	1/2
			1 post 1 block			1 block
21 G. Zhang	22 J. Ma	23 H. Zhuang	27 L. Gong	28 X. Liu	34 M. Jin	53 Y. Liu
				1/1		0/1
	0/1					0/1
				0/1		0/1
				1 miss.	2 miss.	1/1 lob

TOTAL

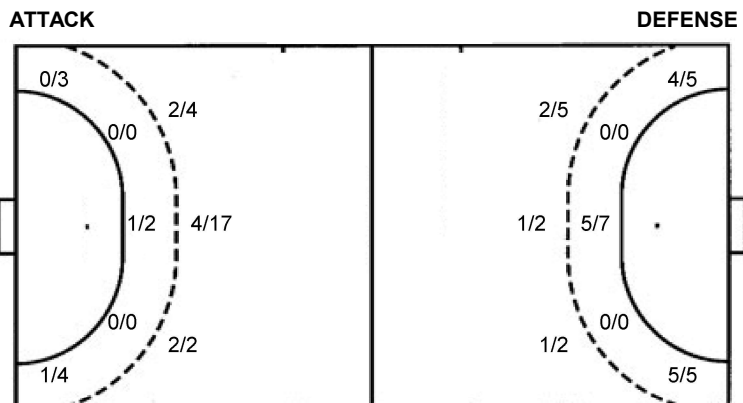
3/4	0/2	1/3
1/4	0/3	1/4
0/2	3/5	3/5

1 post 3 miss. 2 block 1/1 lob

Saves distribution goalkeepers

1 C. Lu	17 Y. Hu	TOTAL
1/4 0/2 2/7		1/4 0/3 2/9
1/2	0/1 0/2	3/5
0/4 0/1 1/8	2/3	3/7
	2/5 1/3	0/6 2/6 1/8

Shots by position



7m penalties 3/4
Fastbreak 0/0
Breakthrough 0/3
Long dist. 0/0

7m penalties 3/4
Fastbreak 8/14
Breakthrough 9/11
Long dist. 0/0

Shooting statistics

Position	Goals	Sav.	Miss.	Post	Blk.	Total	%
Back (9m)	8	10	2	1	2	23	35
Line (6m)	1	1	0	0	0	2	50
Wing	1	6	0	0	0	7	14
7m penalties	3	0	1	0	0	4	75
Fastbreak	0	0	0	0	0	0	0
Breakthrough	0	3	0	0	0	3	0
Total	13	20	3	1	2	39	33

Jersey number Tot. Total shooting 6m 6m (line) shooting 9m 9m shooting Wng Wing shooting FB Fastbreak sh. 7m 7m penalty sh.
Brk. Breakthrough sh. LD Long distance sh. As. Assists PC Pass clear chance E7 Earned 7m pen. TF Technical faults St. Steals
2m 2m punishments C7. Committed 7m E2 Earned 2m pun. YC. Yellow cards R/B Red/Blue cards Blk. Blocks S Starting Line-up

Handball statistics and livescore by Toma-soft ltd (www.toma-soft.hr)

