



26th IHF Women's World Championship

Denmark • Norway • Sweden

Group D, 2. round



Match Team Statistics

Match No. 28

Iceland 22 - 31 France

(10 - 20) (12 - 11)

2.12.2023. 18:00

Attendance: 2414

DNB Arena

Referees: Vladimir Jovandic (SRB) / Marko Sekulic (SRB)

Iceland

#	Surname and name	S	Goals / shots								Attack				Def.			Penalties			TP			
			Tot.	%	9m	6m	Wing	7m	FB	Brk.	LD	As.	PC	E7	E2	TF	St.	C7	Blk	YC		2m	R	B
1	THORSTEINSDÓTTIR Elín Jóna	S													1									53:12
2	THORSTEINSDÓTTIR Berglind																							11:41
3	JACOBSEN Andrea	S	1/2	50	0/1					1/1	1	1		2		2				1				38:34
4	STEFANSDÓTTIR Thórey Rósa		2/2	100			2/2							1										24:01
6	ASEIRSDÓTTIR Thórey Anna		2/3	67			2/3							1										22:15
8	ALBERTSDÓTTIR Perla Ruth	S	1/3	33			1/3					1	1	1										30:35
9	AGÜTSDÓTTIR Lilja		2/4	50			2/3		0/1							1								20:34
12	RENÖTUDÓTTIR Hafdis																							
15	SIGURDARDÓTTIR Johanna Margret												1											6:03
18	EINARSDÓTTIR Hildigunnur	S											1											26:11
21	ERLINGSDÓTTIR Sandra	S	7/9	78	1/2			4/5		2/2	1	2		1	3		1							32:52
22	MAGNÚSDÓTTIR Elín Rósa		1/4	25	0/3					1/1	5	1		6										38:49
25	STURLUDÓTTIR Thea Imani	S	3/10	30	1/7	0/1				2/2	2	3		1	2		1			1				41:13
26	JÖNSDÓTTIR Sunna	S	0/2	0		0/2								1			1							17:25
27	MAGNÚSDÓTTIR Díana Dögg		2/4	50	0/2					2/2		1	1		2	1	1							22:39
33	JENSÓTTIR Katrín Tinna		1/1	100		1/1						1												33:56
	Team / bench																					1		
	UKUPNO		22/44	50	2/15	1/4	7/11	4/5	0/1	8/8	0/0	9	9	5	3	19	2	5	1	1	2	0	0	

#	Surname and name	Saves / shots								
		Tot.	%	9m	6m	Wing	7m	FB	Brk.	LD
1	THORSTEINSDÓTTIR Elín Jóna	14/45	31	2/8	1/7	3/7	4/5	1/8	3/8	0/2
12	RENÖTUDÓTTIR Hafdis									
	TOTAL	14/45	31	2/8	1/7	3/7	4/5	1/8	3/8	0/2

Coach: Arnar Pétursson

Number of attacks: 61, Efficiency: 36%, Average Duration: 38.38 seconds

Attack by type of defense

	Shots	9m	6m	Wing	TF	E7	E2
On def. 6-0	18/35	2/14	1/2	7/11	16	3	2
On def. 5-1	0/2	0/1	0/1	0/0	3	2	1
Fastbreak	0/1				0	0	0

Defense by type

	Total	9m	6m	Wing	Stl.	C7	2m
Def. 6-0	10/17	4/6	1/2	4/5	0	1	0
Def. 5-1	11/16	2/5	5/6	0/1	2	4	0
Fastbreak	7/8				0	0	2

Attack with superiority / minority / goalkeeper out

	Attack				Reaction		
	Att.	Eff.	Shots	TF	FB	LD	Tot.
7 on 6 (GK out)	8	38%	3/4	4	0/0	2/2	2/2
7 on 5 (GK out)	2	50%	1/2	0	0/0	0/0	0/0
6 on 6 (GK out)	3	0%	0/2	1	1/1	0/0	1/1
6 on 6	42	36%	15/30	12			
6 on 5	6	50%	3/4	2			

Player superiority / GK out counted at the end of attack (in case it changes during attack)

Defense with superiority / minority / goalkeeper out

	Attack				Reaction		
	Att.	Eff.	Shots	TF	FB	LD	Tot.
6 on 6	50	56%	28/41	9			
5 on 6	6	0%	0/3	3			
6 on 5	4	75%	3/4	0			

Numbers show attacking numbers of opponent. Lower efficiency of opponent means better defense of this team

Jersey number Tot. Total shooting 6m 6m (line) shooting 9m 9m shooting Wng Wing shooting FB Fastbreak sh. 7m 7m penalty sh.
 Brk. Breakthrough sh. LD Long distance sh. As. Assists PC Pass clear chance E7 Earned 7m pen. TF Technical faults St. Steals
 2m 2m punishments C7. Committed 7m E2 Earned 2m pun. YC. Yellow cards R/B Red/Blue cards Blk. Blocks S Starting Line-up



26th IHF Women's World Championship

Denmark • Norway • Sweden

Group D, 2. round



Match Team Statistics

Match No. 28

Iceland 22 - 31 France

(10 - 20) (12 - 11)

2.12.2023. 18:00

Attendance: 2414

DNB Arena

Referees: Vladimir Jovandic (SRB) / Marko Sekulic (SRB)

Shot distribution by player

2 B. Thorsteinsdóttir

3 A. Jacobsen

1/1		

1 miss.

4 T. Stefánsdóttir

1/1		

6 T. Áseirsdóttir

1/1		
1/1		

1 post

8 P. Albertsdóttir

		1/1

2 miss.

9 L. Ágútsdóttir

		1/1
0/2		
1/1		

15 J. Sigurdardóttir

18 H. Einarsson

21 S. Erlingsdóttir

1/1		1/1
		0/2
4/4		1/1

22 E. Magnúsdóttir

0/1	0/1	
1/1		

1 post

25 T. Sturludóttir

		1/1
	0/3	0/1
2/2	0/1	

1 post 1 block

26 S. Jónsdóttir

	0/1	

1 post

27 D. Magnúsdóttir

		1/1
1/1		

1 miss. 1 block

33 K. Jensdóttir

		1/1

TOTAL

2/2		5/5
3/6	0/4	0/3
9/9	0/2	3/3

4 post 4 miss. 2 block

Saves distribution goalkeepers

1 E. Thorsteinsdóttir

0/2	2/2	0/2
2/4	4/7	1/5
2/12	3/4	0/6

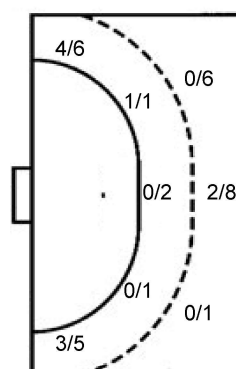
12 H. Renötudóttir

TOTAL

0/2	2/2	0/2
2/4	4/7	1/5
2/12	3/4	0/6

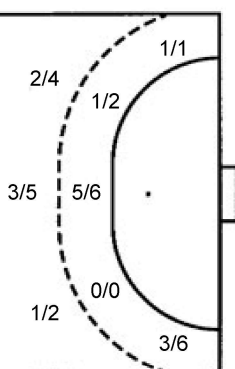
Shots by position

ATTACK



7m penalties 4/5
Fastbreak 0/1
Breakthrough 8/8
Long dist. 0/0

DEFENSE



7m penalties 1/5
Fastbreak 7/8
Breakthrough 5/8
Long dist. 2/2

Shooting statistics

Position	Goals	Sav.	Miss.	Post	Blk.	Total	%
Back (9m)	2	7	2	2	2	15	13
Line (6m)	1	2	0	1	0	4	25
Wing	7	1	2	1	0	11	64
7m penalties	4	1	0	0	0	5	80
Fastbreak	0	1	0	0	0	1	0
Breakthrough	8	0	0	0	0	8	100
Total	22	12	4	4	2	44	50

Jersey number Tot. Total shooting 6m 6m (line) shooting 9m 9m shooting Wng Wing shooting FB Fastbreak sh. 7m 7m penalty sh.
Brk. Breakthrough sh. LD Long distance sh. As. Assists PC Pass clear chance E7 Earned 7m pen. TF Technical faults St. Steals
2m 2m punishments C7. Committed 7m E2 Earned 2m pun. YC. Yellow cards R/B Red/Blue cards Blk. Blocks S Starting Line-up

Handball statistics and livescore by Toma-soft ltd (www.toma-soft.hr)



26th IHF Women's World Championship

Denmark • Norway • Sweden

Group D, 2. round



Match Team Statistics

Match No. 28

Iceland 22 - 31 France

(10 - 20) (12 - 11)

2.12.2023. 18:00

Attendance: 2414

DNB Arena

Referees: Vladimir Jovandic (SRB) / Marko Sekulic (SRB)

France

Players		Goals / shots									Attack				Def.			Penalties				TP			
#	Surname and name	S	Tot.	%	9m	6m	Wing	7m	FB	Brk.	LD	As.	PC	E7	E2	TF	St.	C7	Blk	YC	2m		R	B	
1	GLAUSER Laura	S										3													30:00
2	NOCANDY Méline	S	2/5	40	1/1	0/1			0/1	1/2						2									22:03
3	TOUBLANC Alicia	S	2/4	50			2/3	0/1									1								14:54
6	VALENTINI Chloé	S	3/3	100			1/1		2/2				1				1								16:12
8	LASSOURCE Coralie		1/2	50	0/1				1/1			1						1				1			43:48
10	ZAADI DEUNA Grace		1/4	25	0/2			0/1			1/1	3	2			1		1							20:07
20	FLIPPES Laura	S	1/1	100						1/1		1	1												16:33
21	KANOR Orlane		5/5	100	3/3	1/1				1/1								1							24:39
22	HORACEK Tamara		0/1	0				0/1				1				2	1	1				1			25:12
23	LASSOURCE Déborah		1/1	100						1/1		1				1		1				1			18:44
26	FOPPA Pauletta	S	0/1	0		0/1						1							1						24:01
27	NZE MINKO Estelle	S	4/6	67	1/3				2/2	1/1		3	1	2	1	3	2								27:42
31	GRANIER Lucie		4/6	67		1/1	1/3		1/1		1/1														43:52
32	BOUKTIT Sarah		5/6	83		4/4		1/2				3	1	1		1	3		1						37:27
34	GRANDVEAU Léna		2/4	50	1/1				1/1	0/2		1		2	1	1									24:46
99	SAKO Hatadou															1									30:00
	Team / bench																								
	UKUPNO		31/49	63	6/11	6/8	4/7	1/5	7/8	5/8	2/2	18	6	5	2	12	8	5	2	0	3	0	0		

Goalkeepers		Saves / shots								
#	Surname and name	Tot.	%	9m	6m	Wing	7m	FB	Brk.	LD
1	GLAUSER Laura	7/17	41	4/5	2/3	0/3	1/2		0/4	
99	SAKO Hatadou	5/17	29	3/4		1/5	0/3	1/1	0/4	
	TOTAL	12/34	35	7/9	2/3	1/8	1/5	2/1	0/8	0/0

Coach: Olivier Krumbholz

Number of attacks: 60, Efficiency: 52%, Average Duration: 20.98 seconds

Attack by type of defense

	Shots	9m	6m	Wing	TF	E7	E2
On def. 6-0	10/17	4/6	1/2	4/5	3	1	1
On def. 5-1	11/16	2/5	5/6	0/1	9	4	1
Fastbreak	7/8				0	0	0

Defense by type

	Total	9m	6m	Wing	Stl.	C7	2m
Def. 6-0	18/35	2/14	1/2	7/11	7	3	0
Def. 5-1	0/2	0/1	0/1	0/0	1	2	0
Fastbreak	0/1				0	0	3

Attack with superiority / minority / goalkeeper out

	Attack				Reaction		
	Att.	Eff.	Shots	TF	FB	LD	Tot.
6 on 6	50	56%	28/41	9			
5 on 6	6	0%	0/3	3			
6 on 5	4	75%	3/4	0			

Player superiority / GK out counted at the end of attack (in case it changes during attack)

Defense with superiority / minority / goalkeeper out

	Attack				Reaction		
	Att.	Eff.	Shots	TF	FB	LD	Tot.
7 on 6 (GK out)	8	38%	3/4	4	0/0	2/2	2/2
7 on 5 (GK out)	2	50%	1/2	0	0/0	0/0	0/0
6 on 6 (GK out)	3	0%	0/2	1	1/1	0/0	1/1
6 on 6	42	36%	15/30	12			
6 on 5	6	50%	3/4	2			

Numbers show attacking numbers of opponent. Lower efficiency of opponent means better defense of this team

Jersey number Tot. Total shooting 6m 6m (line) shooting 9m 9m shooting Wng Wing shooting FB Fastbreak sh. 7m 7m penalty sh.
 Brk. Breakthrough sh. LD Long distance sh. As. Assists PC Pass clear chance E7 Earned 7m pen. TF Technical faults St. Steals
 2m 2m punishments C7. Committed 7m E2 Earned 2m pun. YC. Yellow cards R/B Red/Blue cards Blk. Blocks S Starting Line-up



26th IHF Women's World Championship

Denmark • Norway • Sweden

Group D, 2. round



Match Team Statistics

Match No. 28

Iceland 22 - 31 France

(10 - 20) (12 - 11)

2.12.2023. 18:00

Attendance: 2414

DNB Arena

Referees: Vladimir Jovandic (SRB) / Marko Sekulic (SRB)

Shot distribution by player

2 M. Nocandy

	0/2	1/2
1/1		

3 A. Toublanc

	0/1	
1/2		

1/1 lob

6 C. Valentini

		1/1
1/1	1/1	

8 C. Lassource

1/2		

10 G. Zaadi Deuna

	0/1	
	1/1	

1 miss. 1 block

20 L. Flippes

		1/1

21 O. Kanor

		2/2
2/2		1/1

22 T. Horacek

0/1		

23 D. Lassource

		1/1

26 P. Foppa

1 post

27 E. Nze Minko

1/2	1/1	
1/1		1/1

1 miss.

31 L. Granier

1/1	0/1	1/1
	1/1	
1/1	0/1	

32 S. Bouktif

1/1		
1/1		1/1
1/1	0/1	1/1

34 L. Grandveau

	0/1	
1/1	0/1	1/1

TOTAL

2/2	0/2	2/2
2/4	3/7	4/5
10/12	1/4	6/6

1 post 2 miss. 1 block 1/1 lob

Saves distribution goalkeepers

1 L. Glauser

		0/2
0/1	4/4	1/1
0/5	2/2	0/2

99 H. Sako

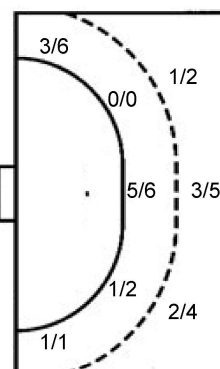
0/2		0/3
3/5		2/2
0/4		0/1

TOTAL

0/2		0/5
3/6	4/4	3/3
0/9	2/2	0/3

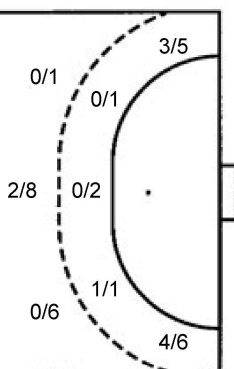
Shots by position

ATTACK



7m penalties	1/5
Fastbreak	7/8
Breakthrough	5/8
Long dist.	2/2

DEFENSE



7m penalties	4/5
Fastbreak	0/1
Breakthrough	8/8
Long dist.	0/0

Shooting statistics

Position	Goals	Sav.	Miss.	Post	Blk.	Total	%
Back (9m)	6	2	2	0	1	11	55
Line (6m)	6	1	0	1	0	8	75
Wing	4	3	0	0	0	7	57
7m penalties	1	4	0	0	0	5	20
Fastbreak	7	1	0	0	0	8	88
Breakthrough	5	3	0	0	0	8	63
Total	29	14	2	1	1	47	62

Jersey number Tot. Total shooting 6m 6m (line) shooting 9m 9m shooting Wng Wing shooting FB Fastbreak sh. 7m 7m penalty sh.
 Brk. Breakthrough sh. LD Long distance sh. As. Assists PC Pass clear chance E7 Earned 7m pen. TF Technical faults St. Steals
 2m 2m punishments C7. Committed 7m E2 Earned 2m pun. YC. Yellow cards R/B Red/Blue cards Blk. Blocks S Starting Line-up

Handball statistics and livescore by Toma-soft ltd (www.toma-soft.hr)



26th IHF Women's World Championship

Denmark • Norway • Sweden

Group D, 2. round



Match Team Statistics

Match No. 28

Iceland 22 - 31 France

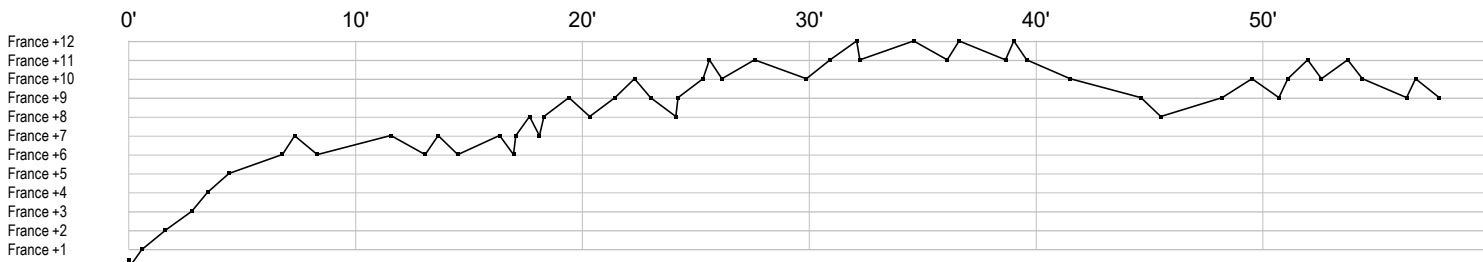
(10 - 20) (12 - 11)

2.12.2023. 18:00

Attendance: 2414

DNB Arena

Referees: Vladimir Jovandic (SRB) / Marko Sekulic (SRB)



Iceland

1 Thorsteinsdóttir	r r r r r s r r s s r r r t s r r r r s r f r r r r s s r r r s r s r r s s r r r r r r s
2 Thorsteinsdóttir	
3 Jacobsen A	t f a t c g 2c e
4 Stefánsdóttir	g t g
6 Áseirdóttir T	g gf
8 Albertsdóttir P	g p ei f f
9 Ágútsdóttir L	f b gf g
12 Renötudóttir	
15 Sigurdardóttir	e
18 Einarsdóttir H	e
21 Erlingsdóttir S	t t a g g f p g c f g t pi g g g
22 Magnúsdóttir	a t a f p a t t g f t t f a a t
25 Sturludóttir T	2c ff f f p t f g g f g p f t a ap i
26 Jónsdóttir S	f x t f
27 Magnúsdóttir	tp f g t fgc b e
33 Jensdóttir K	g p

France

1 Glauser L	a s s as r r r r r r as r r r s s f
2 Nocandy M	f f t f g g t
3 Toubanc A	f g b g f
6 Valentini C	b g g p g
8 Lassource C	a 2 f g c
10 Zaadi Deuna	fa a a f g f p t c p
20 Flippes L	p a g
21 Kanor O	g g gg g c
22 Horacek T	b c f t t 2 a
23 Lassource D	2c t g a
26 Foppa P	a x f
27 Nze Minko E	g i e g g t a f t e f bg ab p a t
31 Granier L	g g g g f f
32 Bouktit S	g t ba x ba ba g f p g e g g
34 Grandveau L	a f g g f t ei e
99 Sako H	s r s s r r r r r r t r s r r r r

In game	g Goal scored	f Missed shot	a Assist	t Technical faults	b Steal
2 2min suspension	e Earned 7m	c Committed 7m	y Yellow card	r Red Card	k Blue card
i Earned 2min.	x Block	4 4min suspension	p Pass for clear chance	s Saved shot	r Received goal