



26th IHF Women's World Championship

Denmark • Norway • Sweden

Group H, 2. round



Match Team Statistics

Match No. 23

Czech Republic 31 - 22 Argentina

(16 - 10) (15 - 12)

2.12.2023. 15:30

Attendance: 711

Arena Nord

Referees: Kristof Altmar (HUN) / Marton Horvath (HUN)

Czech Republic

| # | Surname and name | S | Goals / shots | | | | | | | | Attack | | | | | Def. | | | Penalties | | | | TP | | | | | |
|--------------|---------------------|---|---------------|-----|------|-----|------|-----|-----|------|--------|-----|----|----|----|------|-----|----|-----------|----|----|---|----|---|--|--|--|-------|
| | | | Tot. | % | 9m | 6m | Wing | 7m | FB | Brk. | LD | As. | PC | E7 | E2 | TF | St. | C7 | Blk | YC | 2m | R | | B | | | | |
| 9 | STRIŠKOVÁ Adéla | | | | | | | | | | | | | | | | | | | | | | | | | | | 3:44 |
| 22 | ŠUSTÁČKOVÁ Marketa | S | 5/8 | 63 | 3/6 | | | | | | | | | | | | | | | | | | | | | | | 53:47 |
| 24 | DESORTOVÁ Eliška | | | | | | | | | | | | | | | | | | | | | | | | | | | |
| 31 | STELLNEROVÁ Alena | | | | | | | | | | | | | | | | | | | | | | | | | | | 0:18 |
| 32 | KUXOVÁ Natálie | | 2/2 | 100 | | | | | | | | | | | | | | | | | | | | | | | | 22:46 |
| 33 | KUDLÁČKOVÁ Petra | S | | | | | | | | | | | | | | | | | | | | | | | | | | 47:37 |
| 34 | FRANKOVÁ Julie | S | | | | | | | | | | | | | | | | | | | | | | | | | | 38:29 |
| 38 | FRANKOVÁ Anna | | | | | | | | | | | | | | | | | | | | | | | | | | | 8:05 |
| 42 | DRESSLEROVÁ Katka | | 0/1 | 0 | 0/1 | | | | | | | | | | | | | | | | | | | | | | | 1:42 |
| 44 | ZACHOVÁ Dominika | S | 5/6 | 83 | | 1/2 | | | | | | | | | | | | | | | | | | | | | | 46:30 |
| 48 | KOVÁROVÁ Sára | | | | | | | | | | | | | | | | | | | | | | | | | | | 2:23 |
| 51 | JERABKOVÁ Marketa | | 7/10 | 70 | 2/3 | 1/1 | 1/1 | 1/3 | | | | | | | | | | | | | | | | | | | | 32:01 |
| 67 | MALÁ Veronika | S | 8/10 | 80 | | 0/1 | 4/5 | | 4/4 | | | | | | | | | | | | | | | | | | | 56:05 |
| 79 | NOVOTNÁ Sabrina | | | | | | | | | | | | | | | | | | | | | | | | | | | 6:13 |
| 91 | JESTŘÍBKOVÁ Anna | S | 2/2 | 100 | | 2/2 | | | | | | | | | | | | | | | | | | | | | | 48:35 |
| 96 | CHOLEVOVÁ Charlotte | S | 2/6 | 33 | 1/4 | | | | 1/1 | 0/1 | | | | | | | | | | | | | | | | | | 51:42 |
| Team / bench | | | | | | | | | | | | | | | | | | | | | | | | | | | | |
| UKUPNO | | | 31/45 | 69 | 6/13 | 3/5 | 6/8 | 1/3 | 9/9 | 6/7 | 0/0 | 18 | 4 | 3 | 3 | 15 | 4 | 2 | 3 | 1 | 7 | 0 | 0 | | | | | |

| # | Surname and name | Saves / shots | | | | | | | | |
|-------|------------------|---------------|----|------|-----|------|-----|-----|------|-----|
| | | Tot. | % | 9m | 6m | Wing | 7m | FB | Brk. | LD |
| 33 | KUDLÁČKOVÁ Petra | 12/32 | 38 | 8/12 | 1/6 | 2/5 | 0/2 | | 1/7 | |
| 79 | NOVOTNÁ Sabrina | 2/4 | 50 | 0/1 | | | | | 1/2 | 1/1 |
| TOTAL | | 14/36 | 39 | 8/12 | 1/7 | 2/5 | 0/2 | 0/0 | 2/9 | 1/1 |

Coach: Bent Dahl

Number of attacks: 58, Efficiency: 53%, Average Duration: 25.93 seconds

Attack by type of defense

| | Shots | 9m | 6m | Wing | TF | E7 | E2 |
|-------------|-------|------|-----|------|----|----|----|
| On def. 6-0 | 16/28 | 5/12 | 3/5 | 5/7 | 12 | 2 | 3 |
| On def. 5-1 | 3/3 | 0/0 | 0/0 | 1/1 | 2 | 1 | 0 |
| On def. 4-2 | 2/2 | 1/1 | 0/0 | 0/0 | 1 | 0 | 0 |
| Fastbreak | 9/9 | | | | 0 | 0 | 0 |

Defense by type

| | Total | 9m | 6m | Wing | Stl. | C7 | 2m |
|-----------|-------|------|-----|------|------|----|----|
| Def. 6-0 | 20/42 | 4/15 | 6/9 | 3/6 | 4 | 2 | 0 |
| Fastbreak | 0/0 | | | | 0 | 0 | 7 |

Attack with superiority / minority / goalkeeper out

| | Attack | | | | Reaction | | |
|-----------------|--------|------|-------|----|----------|-----|------|
| | Att. | Eff. | Shots | TF | FB | LD | Tot. |
| 7 on 6 (GK out) | 2 | 0% | 0/2 | 0 | 0/0 | 0/0 | 0/0 |
| 6 on 6 (GK out) | 8 | 50% | 4/6 | 2 | 0/0 | 0/1 | 0/1 |
| 5 on 6 (GK out) | 1 | 100% | 1/1 | 0 | 0/0 | 0/0 | 0/0 |
| 6 on 6 | 40 | 53% | 21/27 | 13 | | | |
| 6 on 5 | 5 | 100% | 5/5 | 0 | | | |
| 5 on 6 | 2 | 0% | 0/2 | 0 | | | |

Player superiority / GK out counted at the end of attack (in case it changes during attack)

Defense with superiority / minority / goalkeeper out

| | Attack | | | | Reaction | | |
|-----------------|--------|------|-------|----|----------|-----|------|
| | Att. | Eff. | Shots | TF | FB | LD | Tot. |
| 6 on 6 (GK out) | 3 | 33% | 1/3 | 0 | 1/1 | 0/0 | 1/1 |
| 6 on 6 | 40 | 38% | 15/27 | 13 | | | |
| 5 on 6 | 1 | 0% | 0/0 | 1 | | | |
| 6 on 5 (GK out) | 1 | 0% | 0/1 | 0 | 0/0 | 0/0 | 0/0 |
| 6 on 5 | 12 | 50% | 6/8 | 4 | | | |
| 6 on 4 | 2 | 0% | 0/2 | 0 | | | |

Numbers show attacking numbers of opponent. Lower efficiency of opponent means better defense of this team

Jersey number Tot. Total shooting 6m 6m (line) shooting 9m 9m shooting Wng Wing shooting FB Fastbreak sh. 7m 7m penalty sh.
 Brk. Breakthrough sh. LD Long distance sh. As. Assists PC Pass clear chance E7 Earned 7m pen. TF Technical faults St. Steals
 2m 2m punishments C7. Committed 7m E2 Earned 2m pun. YC. Yellow cards R/B Red/Blue cards Blk. Blocks S Starting Line-up



26th IHF Women's World Championship

Denmark • Norway • Sweden

Group H, 2. round



Match Team Statistics

Match No. 23

Czech Republic 31 - 22 Argentina

(16 - 10) (15 - 12)

2.12.2023. 15:30

Attendance: 711

Arena Nord

Referees: Kristof Altmar (HUN) / Marton Horvath (HUN)

Shot distribution by player

| | | | | | | |
|--------------------------|---------------------------------|------------------------|--------------------------------------|----------------------------|--------------------------|------------------------|
| 9 A. Střížková | 22 M. Šustáčková | 24 E. Desortová | 31 A. Stellnerová | 32 N. Kuxová | 34 J. Franková | 38 A. Franková |
| | 2/4 0/1 1/1 1/1 1/1 | | | 1/1 1/1 | | |
| 42 K. Dresslerová | 44 D. Zachova | 48 S. Kovářová | 51 M. Jerabkova | 67 V. Malá | 91 A. Jestřibková | 96 C. Cholevová |
| 0/1 | 1/1 1/1 1/1 2/2 1 post | | 2/2 1/1 0/1 1/1 3/4 1 miss. | 4/4 3/4 1 miss. 1/1 lob | 1/1 1/1 | 0/1 2/2 1 miss. |

TOTAL

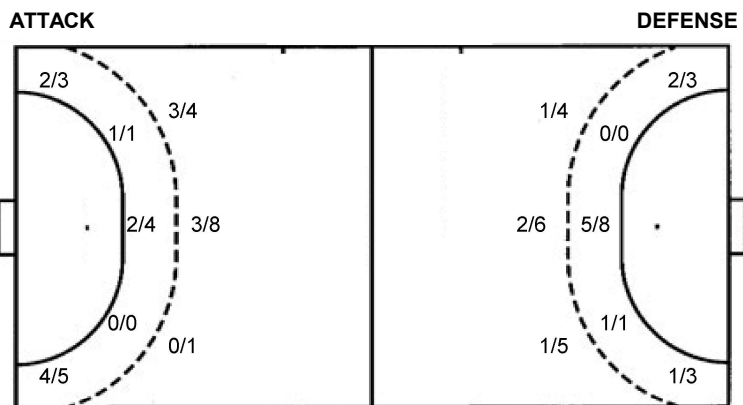
| | | |
|------|-----|-----|
| 5/8 | 1/1 | 2/2 |
| 1/2 | | 4/5 |
| 9/13 | 1/1 | 7/8 |

1 post 3 miss. 1/1 lob

Saves distribution goalkeepers

| | | |
|------------------------------------|----------------------|--|
| 33 P. Kudláčková | 79 S. Novotná | TOTAL |
| 3/4 0/1 1/1 2/2 4/10 1/2 0/8 | 1/2 | 4/6 1/3 0/1 1/1 2/2 4/11 1/2 0/8 |

Shots by position



| | | | |
|--------------|-----|--------------|------|
| 7m penalties | 1/3 | 7m penalties | 2/2 |
| Fastbreak | 9/9 | Fastbreak | 0/0 |
| Breakthrough | 6/7 | Breakthrough | 7/12 |
| Long dist. | 0/0 | Long dist. | 0/1 |

Shooting statistics

| Position | Goals | Sav. | Miss. | Post | Blk. | Total | % |
|--------------|-----------|-----------|----------|----------|----------|-----------|-----------|
| Back (9m) | 6 | 6 | 1 | 0 | 0 | 13 | 46 |
| Line (6m) | 3 | 2 | 0 | 0 | 0 | 5 | 60 |
| Wing | 6 | 0 | 1 | 1 | 0 | 8 | 75 |
| 7m penalties | 1 | 1 | 1 | 0 | 0 | 3 | 33 |
| Fastbreak | 9 | 0 | 0 | 0 | 0 | 9 | 100 |
| Breakthrough | 6 | 1 | 0 | 0 | 0 | 7 | 86 |
| Total | 31 | 10 | 3 | 1 | 0 | 45 | 69 |

Jersey number Tot. Total shooting 6m 6m (line) shooting 9m 9m shooting Wng Wing shooting FB Fastbreak sh. 7m 7m penalty sh.
 Brk. Breakthrough sh. LD Long distance sh. As. Assists PC Pass clear chance E7 Earned 7m pen. TF Technical faults St. Steals
 2m 2m punishments C7. Committed 7m E2 Earned 2m pun. YC. Yellow cards R/B Red/Blue cards Blk. Blocks S Starting Line-up



26th IHF Women's World Championship

Denmark • Norway • Sweden

Group H, 2. round



Match Team Statistics

Match No. 23

Czech Republic 31 - 22 Argentina

(16 - 10) (15 - 12)

2.12.2023. 15:30

Attendance: 711

Arena Nord

Referees: Kristof Altmar (HUN) / Marton Horvath (HUN)

Argentina

| # | Surname and name | S | Goals / shots | | | | | | | | Attack | | | | | Def. | | | Penalties | | | TP | | | | | | |
|--------------|-------------------------|---|---------------|----|------|-----|------|-----|-----|------|--------|-----|----|----|----|------|-----|----|-----------|----|----|----|---|---|---|---|---|-------|
| | | | Tot. | % | 9m | 6m | Wing | 7m | FB | Brk. | LD | As. | PC | E7 | E2 | TF | St. | C7 | Blk | YC | 2m | | R | B | | | | |
| 1 | CARRATU Marisol | S | | | | | | | | | | | | | | | | | | | | | | | | | | 13:22 |
| 2 | RIVADENEIRA Sofia Clara | | 1/2 | 50 | | | 1/2 | | | | | | | | | | | | | | | | | | | | | 29:42 |
| 3 | ROMERO Martina | | 2/3 | 67 | 0/1 | | | | | 2/2 | | | | | 1 | | | 1 | 3 | 1 | | | | | | | | 21:56 |
| 5 | PIZZO Manuela | S | 5/7 | 71 | 1/2 | | | 2/3 | 2/2 | | | | | | | | | | | | | | 1 | | | | | 40:08 |
| 6 | GARCIA Graciela Ayelen | S | 0/1 | 0 | | | | 0/1 | | | | | | | | | | | | | | | | | | | | 30:00 |
| 7 | CAMPIGLI Rocio | S | 1/2 | 50 | | 1/2 | | | | | | | | | | | | | 3 | | 1 | | | | | | | 38:10 |
| 9 | MENDOZA Luciana | | 2/4 | 50 | 0/1 | | | | | 2/3 | | | | 2 | | | | | 1 | | 1 | | | | | | | 14:26 |
| 12 | ROSALEZ Fatima Ayelen | | | | | | | | | | | | | | | | | | | | | | | | | | | 43:15 |
| 13 | GAVILAN Giuliana | S | 5/7 | 71 | | 5/6 | | | | | | | | | | | | | 1 | 3 | | | | | | | | 41:03 |
| 17 | CAVO Malena | S | 1/4 | 25 | 1/3 | | | | | 0/1 | | | | 4 | 1 | 2 | 2 | 3 | | 1 | | | | | | | | 34:16 |
| 19 | LEARRETA Valentina | | | | | | | | | | | | | | | | | | | | | | | | | | | 5:14 |
| 21 | GANDULFO Macarena | | | | | | | | | | | | | | | | | | | | | | | | | | | 5:11 |
| 22 | KARSTEN Elke Josselinne | | 1/2 | 50 | 0/1 | | | | | 1/1 | | | | 1 | | | | | 2 | | | | | | 2 | | | 13:06 |
| 24 | BONO Carolina | S | 2/5 | 40 | 2/3 | | | | | 0/2 | | | | 1 | 2 | | 1 | 2 | | | | | | | | | | 29:55 |
| 25 | CASASOLA Micaela Joana | | 2/7 | 29 | 0/4 | | | | | 2/3 | | | | 2 | 1 | | 1 | 1 | | | | | | 1 | | | | 45:38 |
| 26 | DALLE CRODE Lucia | | 0/1 | 0 | | 0/1 | | | | | | | | | | | | | | | | | | | | | | 13:52 |
| Team / bench | | | | | | | | | | | | | | | | | | | | | | | | | | | | |
| UKUPNO | | | 22/45 | 49 | 4/15 | 6/9 | 3/6 | 2/2 | 0/0 | 7/12 | 0/1 | 11 | 4 | 2 | 6 | 18 | 1 | 3 | 0 | 1 | 3 | 0 | 0 | 0 | 0 | 0 | 0 | 0 |

| # | Surname and name | Saves / shots | | | | | | | | |
|-------|-----------------------|---------------|----|------|-----|------|-----|-----|------|-----|
| | | Tot. | % | 9m | 6m | Wing | 7m | FB | Brk. | LD |
| 1 | CARRATU Marisol | 1/9 | 11 | 1/4 | | 0/2 | | 0/1 | 0/2 | |
| 12 | ROSALEZ Fatima Ayelen | 9/32 | 28 | 5/8 | 2/5 | 0/4 | 1/2 | 0/8 | 1/5 | |
| TOTAL | | 10/41 | 24 | 6/12 | 2/5 | 0/6 | 1/2 | 0/9 | 1/7 | 0/0 |

Coach: Eduardo Gabriel Gallardo

Number of attacks: 59, Efficiency: 37%, Average Duration: 35.19 seconds

Attack by type of defense

| | Shots | 9m | 6m | Wing | TF | E7 | E2 |
|-------------|-------|------|-----|------|----|----|----|
| On def. 6-0 | 20/42 | 4/15 | 6/9 | 3/6 | 18 | 2 | 6 |
| Fastbreak | 0/0 | | | | 0 | 0 | 0 |

Defense by type

| | Total | 9m | 6m | Wing | Stl. | C7 | 2m |
|-----------|-------|------|-----|------|------|----|----|
| Def. 6-0 | 16/28 | 5/12 | 3/5 | 5/7 | 1 | 2 | 0 |
| Def. 5-1 | 3/3 | 0/0 | 0/0 | 1/1 | 0 | 1 | 0 |
| Def. 4-2 | 2/2 | 1/1 | 0/0 | 0/0 | 0 | 0 | 0 |
| Fastbreak | 9/9 | | | | 0 | 0 | 3 |

Attack with superiority / minority / goalkeeper out

| | Attack | | | | Reaction | | |
|-----------------|--------|------|-------|----|----------|-----|------|
| | Att. | Eff. | Shots | TF | FB | LD | Tot. |
| 6 on 6 (GK out) | 3 | 33% | 1/3 | 0 | 1/1 | 0/0 | 1/1 |
| 6 on 6 | 40 | 38% | 15/27 | 13 | | | |
| 5 on 6 | 1 | 0% | 0/0 | 1 | | | |
| 6 on 5 (GK out) | 1 | 0% | 0/1 | 0 | 0/0 | 0/0 | 0/0 |
| 6 on 5 | 12 | 50% | 6/8 | 4 | | | |
| 6 on 4 | 2 | 0% | 0/2 | 0 | | | |

Player superiority / GK out counted at the end of attack (in case it changes during attack)

Defense with superiority / minority / goalkeeper out

| | Attack | | | | Reaction | | |
|-----------------|--------|------|-------|----|----------|-----|------|
| | Att. | Eff. | Shots | TF | FB | LD | Tot. |
| 7 on 6 (GK out) | 2 | 0% | 0/2 | 0 | 0/0 | 0/0 | 0/0 |
| 6 on 6 (GK out) | 8 | 50% | 4/6 | 2 | 0/0 | 0/1 | 0/1 |
| 5 on 6 (GK out) | 1 | 100% | 1/1 | 0 | 0/0 | 0/0 | 0/0 |
| 6 on 6 | 40 | 53% | 21/27 | 13 | | | |
| 6 on 5 | 5 | 100% | 5/5 | 0 | | | |
| 5 on 6 | 2 | 0% | 0/2 | 0 | | | |

Numbers show attacking numbers of opponent. Lower efficiency of opponent means better defense of this team

Jersey number Tot. Total shooting 6m 6m (line) shooting 9m 9m shooting Wng Wing shooting FB Fastbreak sh. 7m 7m penalty sh.
 Brk. Breakthrough sh. LD Long distance sh. As. Assists PC Pass clear chance E7 Earned 7m pen. TF Technical faults St. Steals
 2m 2m punishments C7. Committed 7m E2 Earned 2m pun. YC. Yellow cards R/B Red/Blue cards Blk. Blocks S Starting Line-up



26th IHF Women's World Championship

Denmark • Norway • Sweden

Group H, 2. round



Match Team Statistics

Match No. 23

Czech Republic 31 - 22 Argentina

(16 - 10) (15 - 12)

2.12.2023. 15:30

Attendance: 711

Arena Nord

Referees: Kristof Altmar (HUN) / Marton Horvath (HUN)

Shot distribution by player

2 S. Rivadeneira

| | | |
|--|-----|-----|
| | 0/1 | |
| | | |
| | | 1/1 |

3 M. Romero

| | | |
|-----|-----|--|
| | | |
| | | |
| 1/2 | 1/1 | |

5 M. Pizzo

| | | |
|-----|--|-----|
| 1/3 | | |
| 1/1 | | |
| 1/1 | | 1/1 |

1/1 lob

6 G. Garcia

| | | |
|-----|--|--|
| | | |
| | | |
| 0/1 | | |

7 R. Campigli

| | | |
|--|--|-----|
| | | |
| | | |
| | | 1/1 |

1 miss.

9 L. Mendoza

| | | |
|-----|--|-----|
| 0/1 | | 1/1 |
| | | |
| 1/1 | | |

1 post

13 G. Gavilan

| | | |
|-----|--|-----|
| 1/2 | | 1/1 |
| | | |
| 1/2 | | 2/2 |

17 M. Cavo

| | | |
|-----|-----|-----|
| | | |
| | | 0/1 |
| 0/1 | 0/1 | 1/1 |

19 V. Learreta

| | | |
|--|--|--|
| | | |
| | | |
| | | |

21 M. Gandulfo

| | | |
|--|--|--|
| | | |
| | | |
| | | |

22 E. Karsten

| | | |
|-----|-----|--|
| | | |
| | 0/1 | |
| 1/1 | | |

24 C. Bono

| | | |
|-----|--|-----|
| | | 0/1 |
| | | |
| 2/2 | | |

1 post 1 miss.

25 M. Casasola

| | | |
|--|--|-----|
| | | |
| | | 0/1 |
| | | 2/2 |

1 post 1 miss. 1 block 0/1 lob

26 L. Dalle Crode

| | | |
|--|--|--|
| | | |
| | | |
| | | |

1 block

TOTAL

| | | |
|------|-----|-----|
| 2/6 | 0/1 | 2/3 |
| 1/1 | 0/1 | 0/2 |
| 7/11 | 1/2 | 8/8 |

3 post 3 miss. 2 block 1/2 lob

Saves distribution goalkeepers

1 M. Carratu

| | | |
|-----|-----|-----|
| 1/3 | | 0/1 |
| | | |
| 0/3 | 0/1 | |

12 F. Rosalez

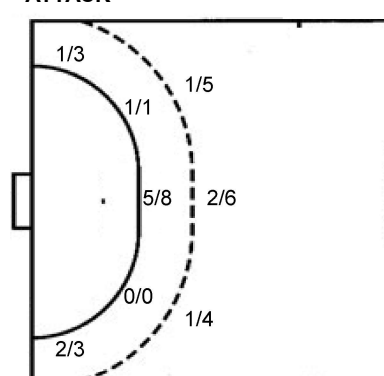
| | | |
|------|-----|-----|
| 2/5 | 0/1 | 0/1 |
| 1/2 | | 1/5 |
| 4/10 | | 1/8 |

TOTAL

| | | |
|------|-----|-----|
| 3/8 | 0/1 | 0/2 |
| 1/2 | | 1/5 |
| 4/13 | 0/1 | 1/8 |

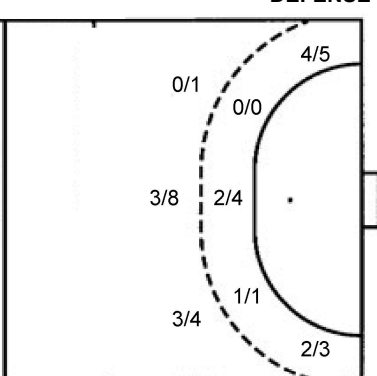
Shots by position

ATTACK



7m penalties 2/2
Fastbreak 0/0
Breakthrough 7/12
Long dist. 0/1

DEFENSE



7m penalties 1/3
Fastbreak 9/9
Breakthrough 6/7
Long dist. 0/0

Shooting statistics

| Position | Goals | Sav. | Miss. | Post | Blk. | Total | % |
|--------------|-----------|-----------|----------|----------|----------|-----------|-----------|
| Back (9m) | 4 | 8 | 1 | 1 | 1 | 15 | 27 |
| Line (6m) | 6 | 1 | 1 | 0 | 1 | 9 | 67 |
| Wing | 3 | 3 | 0 | 0 | 0 | 6 | 50 |
| 7m penalties | 2 | 0 | 0 | 0 | 0 | 2 | 100 |
| Fastbreak | 0 | 0 | 0 | 0 | 0 | 0 | 0 |
| Breakthrough | 7 | 2 | 1 | 2 | 0 | 12 | 58 |
| Total | 22 | 14 | 3 | 3 | 2 | 44 | 50 |

Jersey number Tot. Total shooting 6m 6m (line) shooting 9m 9m shooting Wng Wing shooting FB Fastbreak sh. 7m 7m penalty sh.
Brk. Breakthrough sh. LD Long distance sh. As. Assists PC Pass clear chance E7 Earned 7m pen. TF Technical faults St. Steals
2m 2m punishments C7. Committed 7m E2 Earned 2m pun. YC. Yellow cards R/B Red/Blue cards Blk. Blocks S Starting Line-up

Handball statistics and livescore by Toma-soft ltd (www.toma-soft.hr)



26th IHF Women's World Championship

Denmark • Norway • Sweden

Group H, 2. round



Match Team Statistics

Match No. 23

Czech Republic 31 - 22 Argentina

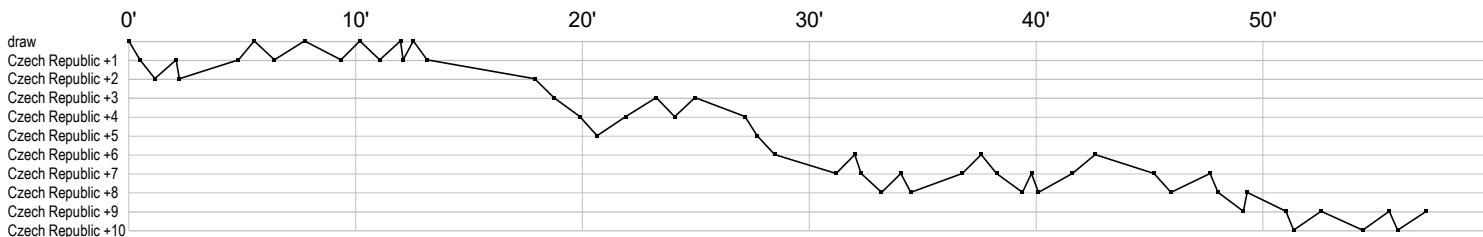
(16 - 10) (15 - 12)

2.12.2023. 15:30

Attendance: 711

Arena Nord

Referees: Kristof Altmar (HUN) / Marton Horvath (HUN)



Czech Republic

| | |
|------------------|--|
| 9 Stríšková A | |
| 22 Šustáčková M | g a f g f t a2 t g a g t p a g f |
| 24 Desortová E | |
| 31 Stellnerová A | |
| 32 Kuxová N | g t a g b i p |
| 33 Kudláčková P | r s r r r r s a r r s s s s r r r s s a a r a r r r a s r r f s r s r sr |
| 34 Franková J | 2 x c p |
| 38 Franková A | 2 |
| 42 Dresslerová K | f t |
| 44 Zachova D | e g gi g fg g |
| 48 Kovárová S | |
| 51 Jerabkova M | gg y t g g 2 g f ba2 fg t fg p |
| 67 Malá V | b tg g i g t g g b g t f g t f g |
| 79 Novotná S | s r s r |
| 91 Jestřibková A | t t e a g g |
| 96 Cholevová C | a x c2 t a a g f t f e 2 g a aa x f f |

Argentina

| | |
|------------------|--|
| 1 Carratu M | rr r r s r r r r |
| 2 Rivadeneira S | f g |
| 3 Romero M | f b g t gi a t t |
| 5 Pizzo M | g y g f f g g g |
| 6 Garcia G | f |
| 7 Campigli R | c g g ft t t |
| 9 Mendoza L | c g t a f f g a |
| 12 Rosalez F | s r r r r r s r r r r r r s sr r r r sr r s r r ss |
| 13 Gavilan G | t tf g g i t g g f g g |
| 17 Cavo M | p aei g f a a t t i f c a f t e |
| 19 Learreta V | |
| 21 Gandulfo M | |
| 22 Karsten E | ft2 g t a 2 |
| 24 Bono C | f g t f p i p t g a |
| 25 Casasola M | a t g f f f i g p f a f2 |
| 26 Dalle Crode L | f |

| | | | | | |
|--------------------------|----------------------|--------------------------|--------------------------------|---------------------------|------------------------|
| In game | g Goal scored | f Missed shot | a Assist | t Technical faults | b Steal |
| 2 2min suspension | e Earned 7m | c Committed 7m | y Yellow card | r Red Card | k Blue card |
| i Earned 2min. | x Block | 4 4min suspension | p Pass for clear chance | s Saved shot | r Received goal |