



26th IHF Women's World Championship

Denmark • Norway • Sweden

Group E, 1. round



Match Team Statistics

Match No. 18

Denmark 25 - 21 Serbia

(10 - 12) (15 - 9)

1.12.2023. 20:30

Attendance: 12389

Jyske Bank Boxen

Referees: Alexei Covalciuc (MDA) / Igor Covalciuc (MDA)

Denmark

#	Surname and name	S	Goals / shots								Attack				Def.			Penalties				TP				
			Tot.	%	9m	6m	Wing	7m	FB	Brk.	LD	As.	PC	E7	E2	TF	St.	C7	Blk	YC	2m		R	B		
1	TOFT Sandra		1/1	100																					30:04	
5	IVERSEN Sarah Aaberg		2/2	100		2/2										1	1								22:07	
6	HAGESO Helena Elver		1/2	50	1/2										1	1									7:10	
8	HANSEN Anne Mette															1									15:07	
10	HEINDAHL Kathrine Brothmann	S	1/2	50		1/2																			28:56	
11	HAUGSTED Line	S	1/4	25	1/3										1			1	1	1	1	2			43:35	
16	REINHARDT Althea Rebecca	S																							28:58	
23	JORGENSEN Kristina	S	5/9	56	1/5				2/2		2/2			3	2	1				2	1				34:21	
25	JENSEN Trine Ostergaard		3/5	60			3/3	0/1	0/1																39:09	
27	BURGAARD Louise Katharina	S	0/1	0	0/1										1										25:03	
31	PETERSEN Simone Cathrine	S	2/3	67					1/1		1/2			4		3	3	1							27:29	
32	HOJLUND Mie Enggrob		2/3	67	1/1						1/2			2									1		23:46	
33	FRIIS Emma Cecilie Uhrskov	S	5/7	71		1/1	3/4	1/2																	60:00	
34	IVERSEN Rikke		2/2	100		2/2																	1	1	32:00	
41	HALILCEVIC Elma																								0:41	
45	SCAGLIONE Julie Mathiesen																								0:48	
	Team / bench																									
	UKUPNO		25/41	61	4/12	6/7	6/7	4/6	0/1	4/7	1/1	12	3	6	6	5	2	7	4	0	1	0	0			

#	Surname and name	Saves / shots								
		Tot.	%	9m	6m	Wing	7m	FB	Brk.	LD
1	TOFT Sandra	5/14	36	1/1	1/2	2/4	0/4		1/3	
16	REINHARDT Althea Rebecca	4/16	25	1/4	0/1	2/6	0/3		1/2	
	TOTAL	9/30	30	2/5	1/3	4/10	0/7	0/0	2/5	0/0

Coach: Jesper Haandbak Jensen

Number of attacks: 41, Efficiency: 61%, Average Duration: 30.49 seconds

Attack by type of defense

	Shots	9m	6m	Wing	TF	E7	E2
On def. 6-0	20/32	4/12	6/7	6/7	5	6	6
Fastbreak	0/1				0	0	0

Defense by type

	Total	9m	6m	Wing	Stl.	C7	2m
Def. 6-0	12/29	3/13	2/3	5/8	2	6	0
Def. 5-1	2/5	0/0	0/2	1/2	0	1	0
Fastbreak	0/0				0	0	1

Attack with superiority / minority / goalkeeper out

	Attack				Reaction		
	Att.	Eff.	Shots	TF	FB	LD	Tot.
6 on 5 (GK out)	1	100%	1/1	0	0/0	0/0	0/0
6 on 6	30	63%	19/27	3			
6 on 5	9	56%	5/8	1			
6 on 4	1	0%	0/0	1			

Player superiority / GK out counted at the end of attack (in case it changes during attack)

Defense with superiority / minority / goalkeeper out

	Attack				Reaction		
	Att.	Eff.	Shots	TF	FB	LD	Tot.
7 on 6 (GK out)	1	0%	0/1	0	0/0	1/1	1/1
6 on 6 (GK out)	7	29%	2/5	2	0/0	0/0	0/0
5 on 6 (GK out)	1	0%	0/0	1	0/0	0/0	0/0
6 on 6	31	58%	18/26	5			
5 on 6	1	0%	0/1	0			
6 on 5	1	100%	1/1	0			

Numbers show attacking numbers of opponent. Lower efficiency of opponent means better defense of this team

Jersey number Tot. Total shooting 6m 6m (line) shooting 9m 9m shooting Wng Wing shooting FB Fastbreak sh. 7m 7m penalty sh.
 Brk. Breakthrough sh. LD Long distance sh. As. Assists PC Pass clear chance E7 Earned 7m pen. TF Technical faults St. Steals
 2m 2m punishments C7. Committed 7m E2 Earned 2m pun. YC. Yellow cards R/B Red/Blue cards Blk. Blocks S Starting Line-up

Handball statistics and livescore by Toma-soft ltd (www.toma-soft.hr)



26th IHF Women's World Championship

Denmark • Norway • Sweden

Group E, 1. round



Match Team Statistics

Match No. 18

Denmark 25 - 21 Serbia

(10 - 12) (15 - 9)

1.12.2023. 20:30

Attendance: 12389

Jyske Bank Boxen

Referees: Alexei Covalciuc (MDA) / Igor Covalciuc (MDA)

Shot distribution by player

5 S. Iversen

	1/1	1/1

6 H. Hageso

		1/1
		0/1

8 A. Hansen

10 K. Heindahl

		1/2

11 L. Haugsted

0/1		0/1
		1/1

1 miss.

23 K. Jorgensen

		0/1
		1/1
1/2		3/3

2 post

25 T. Jensen

0/1	2/2	1/1

1 post

27 L. Burggaard

1 post

31 S. Petersen

		0/1
1/1		1/1

32 M. Hojlund

1/1		0/1
1/1		

33 E. Friis

		1/1
1/1		
1/1		0/1

1 miss. 2/2 lob

34 R. Iversen

1/1		
1/1		

41 E. Halilovic

45 J. Scaglione

TOTAL

2/2		2/5
1/2		1/2
5/7	3/3	8/11

4 post 2 miss. 2/2 lob

Saves distribution goalkeepers

1 S. Toft

	2/2	
0/5	1/2	2/4

16 A. Reinhardt

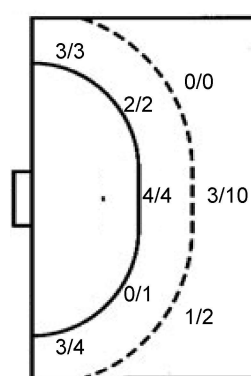
1/1		0/2
	1/1	
0/5	0/2	2/4

TOTAL

1/1	2/2	0/2
	1/1	
0/10	1/4	4/8

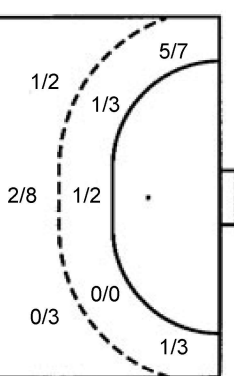
Shots by position

ATTACK



7m penalties 4/6
Fastbreak 0/1
Breakthrough 4/7
Long dist. 1/1

DEFENSE



7m penalties 7/7
Fastbreak 0/0
Breakthrough 3/6
Long dist. 0/0

Shooting statistics

Position	Goals	Sav.	Miss.	Post	Blk.	Total	%
Back (9m)	4	4	1	3	0	12	33
Line (6m)	6	1	0	0	0	7	86
Wing	6	1	0	0	0	7	86
7m penalties	4	0	1	1	0	6	67
Fastbreak	0	1	0	0	0	1	0
Breakthrough	4	3	0	0	0	7	57
Total	24	10	2	4	0	40	60

Jersey number Tot. Total shooting 6m 6m (line) shooting 9m 9m shooting Wng Wing shooting FB Fastbreak sh. 7m 7m penalty sh.
Brk. Breakthrough sh. LD Long distance sh. As. Assists PC Pass clear chance E7 Earned 7m pen. TF Technical faults St. Steals
2m 2m punishments C7. Committed 7m E2 Earned 2m pun. YC. Yellow cards R/B Red/Blue cards Blk. Blocks S Starting Line-up

Handball statistics and livescore by Toma-soft ltd (www.toma-soft.hr)



26th IHF Women's World Championship

Denmark • Norway • Sweden

Group E, 1. round



Match Team Statistics

Match No. 18

Denmark 25 - 21 Serbia

(10 - 12) (15 - 9)

1.12.2023. 20:30

Attendance: 12389

Jyske Bank Boxen

Referees: Alexei Covalciuc (MDA) / Igor Covalciuc (MDA)

Serbia

Players		Goals / shots									Attack					Def.			Penalties			TP			
#	Surname and name	S	Tot.	%	9m	6m	Wing	7m	FB	Brk.	LD	As.	PC	E7	E2	TF	St.	C7	Blk	YC	2m		R	B	
2	RADOSAVLJEVIĆ Sanja	S	5/7	71			5/7												1						56:56
3	VELIČKOVIĆ Teodora																								0:01
4	MAJKIĆ Teodora												1												4:50
7	VUKAJLOVIĆ Aleksandra		0/1	0						0/1												1			8:28
11	LANIŠTANIN Marija		5/6	83	0/1			5/5																	3:17
14	NUKOVIĆ Edita		0/1	0		0/1																			7:50
15	JANJUŠEVIĆ Andela	S	3/7	43	1/4					2/3		2	2	2		2	1					1			59:30
22	JOVOVIĆ Jovana	S	5/8	63	2/5			2/2		1/1		4	3	3	1	5	2								55:27
25	STAMENIĆ Aleksandra																								
27	KUBINA Molli																								0:12
29	LOVRIĆ Nataša	S	1/3	33			1/3											1							45:08
31	BOJIČIĆ Katarina	S	0/2	0		0/2								1								2			52:02
34	RADEVIĆ Dunja																								14:41
36	LAZIĆ Emilija	S	1/5	20	0/3	1/1				0/1		2	1				1	1							36:12
92	MILOJEVIĆ Jovana		1/1	100		1/1												1					3		22:09
99	ČOLIĆ Marija	S																							52:48
	Team / bench															1						1			
	UKUPNO		21/41	51	3/13	2/5	6/10	7/7	0/0	3/6	0/0	6	8	7	1	8	2	6	0	1	7	0	0		

Goalkeepers		Saves / shots								
#	Surname and name	Tot.	%	9m	6m	Wing	7m	FB	Brk.	LD
27	KUBINA Molli	0/1	0				0/1			
99	ČOLIĆ Marija	10/33	30	4/8	1/7	1/7	0/3	1/1	3/7	
	TOTAL	10/34	29	4/8	1/7	1/7	0/4	1/1	3/7	0/0

Coach: Uroš Bregar

Number of attacks: 42, Efficiency: 50%, Average Duration: 55.88 seconds

Attack by type of defense

	Shots	9m	6m	Wing	TF	E7	E2
On def. 6-0	12/29	3/13	2/3	5/8	6	6	0
On def. 5-1	2/5	0/0	0/2	1/2	2	1	1
Fastbreak	0/0				0	0	0

Defense by type

	Total	9m	6m	Wing	Stl.	C7	2m
Def. 6-0	20/32	4/12	6/7	6/7	2	6	0
Fastbreak	0/1				0	0	7

Attack with superiority / minority / goalkeeper out

	Attack				Reaction		
	Att.	Eff.	Shots	TF	FB	LD	Tot.
7 on 6 (GK out)	1	0%	0/1	0	0/0	1/1	1/1
6 on 6 (GK out)	7	29%	2/5	2	0/0	0/0	0/0
5 on 6 (GK out)	1	0%	0/0	1	0/0	0/0	0/0
6 on 6	31	58%	18/26	5			
5 on 6	1	0%	0/1	0			
6 on 5	1	100%	1/1	0			

Player superiority / GK out counted at the end of attack (in case it changes during attack)

Defense with superiority / minority / goalkeeper out

	Attack				Reaction		
	Att.	Eff.	Shots	TF	FB	LD	Tot.
6 on 5 (GK out)	1	100%	1/1	0	0/0	0/0	0/0
6 on 6	30	63%	19/27	3			
6 on 5	9	56%	5/8	1			
6 on 4	1	0%	0/0	1			

Numbers show attacking numbers of opponent. Lower efficiency of opponent means better defense of this team

Jersey number Tot. Total shooting 6m 6m (line) shooting 9m 9m shooting Wng Wing shooting FB Fastbreak sh. 7m 7m penalty sh.
 Brk. Breakthrough sh. LD Long distance sh. As. Assists PC Pass clear chance E7 Earned 7m pen. TF Technical faults St. Steals
 2m 2m punishments C7. Committed 7m E2 Earned 2m pun. YC. Yellow cards R/B Red/Blue cards Blk. Blocks S Starting Line-up

Handball statistics and livescore by Toma-soft ltd (www.toma-soft.hr)



26th IHF Women's World Championship

Denmark • Norway • Sweden

Group E, 1. round



Match Team Statistics

Match No. 18

Denmark 25 - 21 Serbia

(10 - 12) (15 - 9)

1.12.2023. 20:30

Attendance: 12389

Jyske Bank Boxen

Referees: Alexei Covalciuc (MDA) / Igor Covalciuc (MDA)

Shot distribution by player

2 S. Radosavljević

	0/1	
2/2		1/2

2/2 lob

3 T. Veličković

4 T. Majkić

7 A. Vukajlović

	0/1	

11 M. Laništanin

		1/1
4/4		

1 miss.

14 E. Nuković

	0/1	

15 A. Janjušević

	1/1	2/3

2 miss. 1 block

22 J. Jovović

2/2	2/2	1/1

1 post 1 miss. 1 block

25 A. Stamenić

29 N. Lovrić

	0/1	1/1
		0/1

31 K. Bojčić

2 post

34 D. Radević

36 E. Lazić

	0/1	
1/1	0/1	

2 block

92 J. Milojević

1/1		

TOTAL

0/1	0/2	2/2
	0/1	
10/10	3/4	4/8

3 post 4 miss. 4 block 2/2 lob

Saves distribution goalkeepers

27 M. Kubina

		0/1

99 M. Čolić

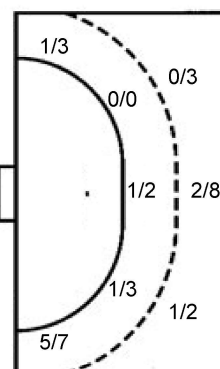
0/2		3/5
1/2		1/2
2/7	0/3	3/10

TOTAL

0/2		3/5
1/2		1/2
2/7	0/3	3/11

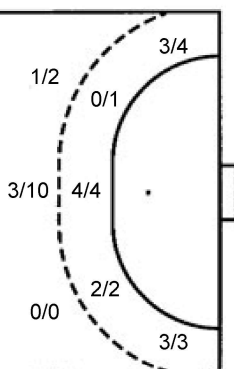
Shots by position

ATTACK



7m penalties	7/7
Fastbreak	0/0
Breakthrough	3/6
Long dist.	0/0

DEFENSE



7m penalties	4/6
Fastbreak	0/1
Breakthrough	4/7
Long dist.	1/1

Shooting statistics

Position	Goals	Sav.	Miss.	Post	Blk.	Total	%
Back (9m)	3	2	3	1	4	13	23
Line (6m)	2	1	0	2	0	5	40
Wing	6	4	0	0	0	10	60
7m penalties	7	0	0	0	0	7	100
Fastbreak	0	0	0	0	0	0	0
Breakthrough	3	2	1	0	0	6	50
Total	21	9	4	3	4	41	51

Jersey number Tot. Total shooting 6m 6m (line) shooting 9m 9m shooting Wng Wing shooting FB Fastbreak sh. 7m 7m penalty sh.
 Brk. Breakthrough sh. LD Long distance sh. As. Assists PC Pass clear chance E7 Earned 7m pen. TF Technical faults St. Steals
 2m 2m punishments C7. Committed 7m E2 Earned 2m pun. YC. Yellow cards R/B Red/Blue cards Blk. Blocks S Starting Line-up

Handball statistics and livescore by Toma-soft ltd (www.toma-soft.hr)



26th IHF Women's World Championship

Denmark • Norway • Sweden

Group E, 1. round



Match Team Statistics

Match No. 18

Denmark 25 - 21 Serbia

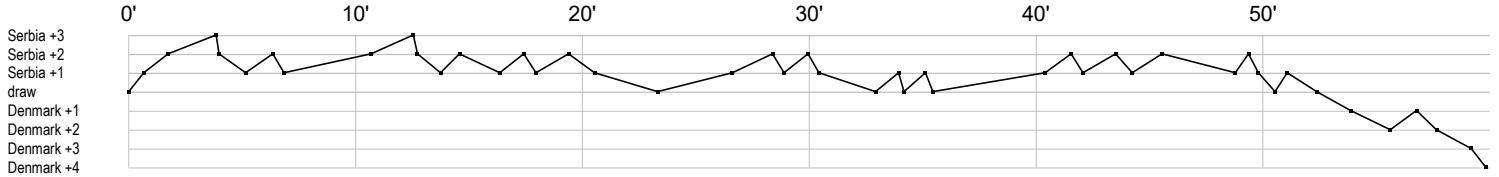
(10 - 12) (15 - 9)

1.12.2023. 20:30

Attendance: 12389

Jyske Bank Boxen

Referees: Alexei Covalciuc (MDA) / Igor Covalciuc (MDA)



Denmark

1 Toft S								f		s	r	r	ss	r	r	r		r	s	r		r
5 Iversen S									g								c		e			gi
6 Hageso H									g	f				a								
8 Hansen A													e								c	
10 Heindahl K									g													f
11 Haugsted L									f	x			f			a						
16 Reinhardt A									r	r	r	r	s	sr	r	r	r	r	sr			
23 Jorgensen K									ff	a		e	f	t		g						
25 Jensen T																						
27 Burggaard L									a			f		c								i
31 Petersen S												a	e			a	g					t
32 Hojlund M																x	a		a			
33 Friis E									g	g					f	f	g		g			
34 Iversen R																						
41 Halilcevic E																						
45 Scaglione J																						

Serbia

2 Radosavljević																						
3 Veličković T																						
4 Majkić T																						
7 Vukajlović A																						
11 Laništanin M																						
14 Nuković E																						
15 Janjušević A																						
22 Jovović J																						
25 Stamenić A																						
27 Kubina M																						
29 Lovrić N																						
31 Bojčić K																						
34 Radević D																						
36 Lazić E																						
92 Miojević J																						
99 Čolić M																						

In game	g Goal scored	f Missed shot	a Assist	t Technical faults	b Steal
2 2min suspension	e Eearned 7m	c Committed 7m	y Yellow card	r Red Card	k Blue card
i Eearned 2min.	x Block	4 4min suspension	p Pass for clear chance	s Saved shot	r Received goal