



26th IHF Women's World Championship

Denmark • Norway • Sweden

Group A, 1. round



Match Team Statistics

Match No. 14

Sweden 36 - 24 P.R. of China

(22 - 8) (14 - 16)

1.12.2023. 20:30

Attendance: 8407

Scandinaviuim

Referees: Andrej Budzak (SVK) / Michal Zahradnik (SVK)

Sweden

#	Surname and name	S	Goals / shots								Attack				Def.			Penalties				TP														
			Tot.	%	9m	6m	Wing	7m	FB	Brk.	LD	As.	PC	E7	E2	TF	St.	C7	Blk	YC	2m		R	B												
1	BUNDSSEN Johanna	S													1																					31:47
3	KOPPANG Nina		6/7	86	1/1	0/1	4/4			1/1						1																			29:45	
4	MELLEGLARD Olivia		2/3	67			2/3																												24:20	
7	BLOHM Linn	S	3/4	75		3/4																													27:41	
8	ROBERTS Jamina	S	5/6	83						0/1	4/4	1/1		4	1																				27:44	
17	DANO Nina		4/7	57	0/2						3/4	1/1		4																					27:10	
19	LAGERQUIST Anna														1																				25:55	
21	ERIKSSON Evelina																																			27:28
23	LINDKVIK Emma	S	2/2	100	1/1									3																					33:15	
24	HAGMAN Nathalie	S	4/4	100			2/2			2/2																										27:27
29	THORLACIUS THORLEIFSDOTTIR Kristin		1/2	50							1/2			3																						18:13
35	HVENFELT Sofia		5/5	100		4/4					1/1			1																						27:05
38	HANSSON Elin	S	1/1	100		1/1								1																						35:32
42	KARLSSON Jenny	S	0/2	0	0/1						0/1			5	1																					15:47
44	DE JONG Daniela		2/2	100	1/1					1/1				2																						18:02
54	AXNER Tyra		1/2	50							1/2			1	1																					22:49
	Team / bench																																			
	UKUPNO		36/47	77	3/6	8/10	8/9	0/0	4/5	11/15	2/2			24	5	0	0	14	2	4	3	0	1	0	0											

#	Surname and name	Saves / shots								
		Tot.	%	9m	6m	Wing	7m	FB	Brk.	LD
1	BUNDSSEN Johanna	7/15	47	4/6	1/2	1/2	1/2	0/1	0/2	
21	ERIKSSON Evelina	3/19	16	1/4	1/1	0/5	0/2	0/1	1/6	
	TOTAL	10/34	29	5/10	2/3	1/7	1/4	0/2	1/8	0/0

Coach: Tomas Axner

Number of attacks: 60, Efficiency: 60%, Average Duration: 23.90 seconds

Attack by type of defense

	Shots	9m	6m	Wing	TF	E7	E2
On def. 6-0	18/24	2/5	4/5	4/4	12	0	0
On def. 5-1	8/11	1/1	2/3	3/4	2	0	0
Fastbreak	4/5				0	0	0

Defense by type

	Total	9m	6m	Wing	Stl.	C7	2m
Def. 6-0	19/37	5/18	1/3	6/8	2	4	0
Fastbreak	2/3				0	0	1

Attack with superiority / minority / goalkeeper out

	Attack				Reaction		
	Att.	Eff.	Shots	TF	FB	LD	Tot.
7 on 6 (GK out)	1	100%	1/1	0	0/0	0/0	0/0
6 on 6 (GK out)	1	0%	0/1	0	0/0	0/0	0/0
6 on 6	58	60%	35/44	14			

Player superiority / GK out counted at the end of attack (in case it changes during attack)

Defense with superiority / minority / goalkeeper out

	Attack				Reaction		
	Att.	Eff.	Shots	TF	FB	LD	Tot.
7 on 6 (GK out)	6	17%	1/4	2	0/0	2/2	2/2
6 on 6	51	45%	23/36	15			
6 on 5	2	0%	0/0	2			

Numbers show attacking numbers of opponent. Lower efficiency of opponent means better defense of this team

Jersey number Tot. Total shooting 6m 6m (line) shooting 9m 9m shooting Wng Wing shooting FB Fastbreak sh. 7m 7m penalty sh.
 Brk. Breakthrough sh. LD Long distance sh. As. Assists PC Pass clear chance E7 Earned 7m pen. TF Technical faults St. Steals
 2m 2m punishments C7. Committed 7m E2 Earned 2m pun. YC. Yellow cards R/B Red/Blue cards Blk. Blocks S Starting Line-up



26th IHF Women's World Championship

Denmark • Norway • Sweden

Group A, 1. round



Match Team Statistics

Match No. 14

Sweden 36 - 24 P.R. of China

(22 - 8) (14 - 16)

1.12.2023. 20:30

Attendance: 8407

Scandinavian

Referees: Andrej Budzak (SVK) / Michal Zahradnik (SVK)

Shot distribution by player

3 N. Koppang

1/1		
		1/1
2/2	0/1	2/2

4 O. Mellegard

		1/1
1/1		

1 post

7 L. Blohm

	1/1	
1/1		0/1

1/1 lob

8 J. Roberts

1/1		
	1/1	1/1
1/1		1/1

1 post

17 N. Dano

2/2		
1/1	1/1	

1 post 2 miss.

19 A. Lagerquist

23 E. Lindqvist

1/1		1/1

24 N. Hagman

	1/1	
		3/3

29 K. Thorleifsdottir

1/1		

1 post

35 S. Hvenfelt

		1/1
2/2		2/2

38 E. Hansson

1/1		

42 J. Carlson

	0/1	

1 block

44 D. De Jong

	1/1	1/1

54 T. Axner

		1/1

1 miss.

TOTAL

4/4	2/2	1/1
2/2	2/2	3/3
9/9	1/3	11/12

4 post 3 miss. 1 block 1/1 lob

Saves distribution goalkeepers

1 J. Bundsen

2/2		0/1
0/1		0/1
5/7		0/1

21 E. Eriksson

0/1		0/1
		0/1
2/9		1/6

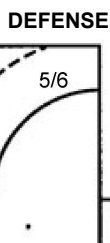
TOTAL

2/3		0/2
0/1		0/2
7/16		1/7

Shots by position



7m penalties 0/0
Fastbreak 4/5
Breakthrough 11/15
Long dist. 2/2



7m penalties 3/4
Fastbreak 2/3
Breakthrough 7/8
Long dist. 0/0

Shooting statistics

Position	Goals	Sav.	Miss.	Post	Blk.	Total	%
Back (9m)	3	0	2	0	1	6	50
Line (6m)	8	2	0	0	0	10	80
Wing	8	0	0	1	0	9	89
7m penalties	0	0	0	0	0	0	0
Fastbreak	4	0	0	1	0	5	80
Breakthrough	11	1	1	2	0	15	73
Total	34	3	3	4	1	45	76

Jersey number Tot. Total shooting 6m 6m (line) shooting 9m 9m shooting Wng Wing shooting FB Fastbreak sh. 7m 7m penalty sh.
Brk. Breakthrough sh. LD Long distance sh. As. Assists PC Pass clear chance E7 Earned 7m pen. TF Technical faults St. Steals
2m 2m punishments C7. Committed 7m E2 Earned 2m pun. YC. Yellow cards R/B Red/Blue cards Blk. Blocks S Starting Line-up

Handball statistics and livescore by Toma-soft ltd (www.toma-soft.hr)



26th IHF Women's World Championship

Denmark • Norway • Sweden

Group A, 1. round



Match Team Statistics

Match No. 14

Sweden 36 - 24 P.R. of China

(22 - 8) (14 - 16)

1.12.2023. 20:30

Attendance: 8407

Scandinaviu

Referees: Andrej Budzak (SVK) / Michal Zahradnik (SVK)

P.R. of China

Players		Goals / shots									Attack				Def.			Penalties				TP			
#	Surname and name	S	Tot.	%	9m	6m	Wing	7m	FB	Brk.	LD	As.	PC	E7	E2	TF	St.	C7	Blk	YC	2m		R	B	
1	LU Chang	S										1													26:22
5	WANG Jiayi															1									7:45
7	JIANG Yishan																								0:05
11	LIU Chan	S	3/6	50	2/5					1/1			2	1		2	1								34:39
12	LI Xiaoqing	S	1/3	33	0/2					1/1		1	1			6									38:31
13	ZHAO Xinyao																								3:54
14	ZHOU Mengxue		2/4	50	0/2	1/1				1/1		1				2									14:52
17	HU Yunuo											1													30:05
18	WEI Nana		2/6	33	1/3		0/1			1/2		2		1		1	1								26:54
21	ZHANG Guisi											1													22:01
22	MA Jie		1/1	100			1/1																		18:52
23	ZHUANG Hongyan	S	1/3	33			0/1		1/2			1				1	1								43:42
27	GONG Lei	S	0/1	0		0/1						1			1				1						41:30
28	LIU Xuedan		4/4	100				3/3		1/1						3	2								19:17
34	JIN Mengqing	S	4/10	40	2/6	0/1		0/1		2/2		2		1		1									38:39
53	LIU Yuting	S	6/6	100			5/5		1/1					1		2									52:52
	Team / bench																								
	UKUPNO		24/44	55	5/18	1/3	6/8	3/4	2/3	7/8	0/0	11	3	4	1	19	5	0	1	0	0	0	0	0	

Goalkeepers		Saves / shots								
#	Surname and name	Tot.	%	9m	6m	Wing	7m	FB	Brk.	LD
1	LU Chang	0/21	0	0/1	0/4	0/5		0/3	0/7	0/1
17	HU Yunuo	3/17	18	0/2	2/6	0/3		0/1	1/5	
	TOTAL	3/38	8	0/3	2/10	0/8	0/0	0/4	1/12	0/1

Coach: Yongli Zheng

Number of attacks: 59, Efficiency: 41%, Average Duration: 36.71 seconds

Attack by type of defense

	Shots	9m	6m	Wing	TF	E7	E2
On def. 6-0	19/37	5/18	1/3	6/8	19	4	1
Fastbreak	2/3				0	0	0

Defense by type

	Total	9m	6m	Wing	Stl.	C7	2m
Def. 6-0	18/24	2/5	4/5	4/4	4	0	0
Def. 5-1	8/11	1/1	2/3	3/4	1	0	0
Fastbreak	4/5				0	0	0

Attack with superiority / minority / goalkeeper out

	Attack				Reaction		
	Att.	Eff.	Shots	TF	FB	LD	Tot.
7 on 6 (GK out)	6	17%	1/4	2	0/0	2/2	2/2
6 on 6	51	45%	23/36	15			
6 on 5	2	0%	0/0	2			

Player superiority / GK out counted at the end of attack (in case it changes during attack)

Defense with superiority / minority / goalkeeper out

	Attack				Reaction		
	Att.	Eff.	Shots	TF	FB	LD	Tot.
7 on 6 (GK out)	1	100%	1/1	0	0/0	0/0	0/0
6 on 6 (GK out)	1	0%	0/1	0	0/0	0/0	0/0
6 on 6	58	60%	35/44	14			

Numbers show attacking numbers of opponent. Lower efficiency of opponent means better defense of this team

Jersey number Tot. Total shooting 6m 6m (line) shooting 9m 9m shooting Wng Wing shooting FB Fastbreak sh. 7m 7m penalty sh.
 Brk. Breakthrough sh. LD Long distance sh. As. Assists PC Pass clear chance E7 Earned 7m pen. TF Technical faults St. Steals
 2m 2m punishments C7. Committed 7m E2 Earned 2m pun. YC. Yellow cards R/B Red/Blue cards Blk. Blocks S Starting Line-up



26th IHF Women's World Championship

Denmark • Norway • Sweden

Group A, 1. round



Match Team Statistics

Match No. 14

Sweden 36 - 24 P.R. of China

(22 - 8) (14 - 16)

1.12.2023. 20:30

Attendance: 8407

Scandinaviavium

Referees: Andrej Budzak (SVK) / Michal Zahradnik (SVK)

Shot distribution by player

5 J. Wang	7 Y. Jiang	11 C. Liu	12 X. Li	13 X. Zhao	14 M. Zhou	18 N. Wei																																																															
<table border="1"><tr><td></td><td></td><td></td></tr><tr><td></td><td></td><td></td></tr><tr><td></td><td></td><td></td></tr></table>										<table border="1"><tr><td></td><td></td><td></td></tr><tr><td></td><td></td><td></td></tr><tr><td></td><td></td><td></td></tr></table>										<table border="1"><tr><td></td><td></td><td></td></tr><tr><td></td><td></td><td>1/1</td></tr><tr><td>1/2</td><td></td><td>1/1</td></tr></table> 1 miss. 1 block						1/1	1/2		1/1	<table border="1"><tr><td></td><td></td><td></td></tr><tr><td>1/1</td><td></td><td></td></tr><tr><td></td><td></td><td></td></tr></table> 2 block				1/1						<table border="1"><tr><td></td><td></td><td></td></tr><tr><td></td><td></td><td></td></tr><tr><td></td><td></td><td></td></tr></table>										<table border="1"><tr><td></td><td></td><td></td></tr><tr><td></td><td></td><td></td></tr><tr><td>2/3</td><td></td><td></td></tr></table> 1 miss.							2/3			<table border="1"><tr><td></td><td></td><td>1/1</td></tr><tr><td></td><td></td><td></td></tr><tr><td>0/2</td><td></td><td>1/2</td></tr></table> 1 miss.			1/1				0/2		1/2
		1/1																																																																			
1/2		1/1																																																																			
1/1																																																																					
2/3																																																																					
		1/1																																																																			
0/2		1/2																																																																			
21 G. Zhang	22 J. Ma	23 H. Zhuang	27 L. Gong	28 X. Liu	34 M. Jin	53 Y. Liu																																																															
<table border="1"><tr><td></td><td></td><td></td></tr><tr><td></td><td></td><td></td></tr><tr><td></td><td></td><td></td></tr></table>										<table border="1"><tr><td></td><td></td><td></td></tr><tr><td>1/1</td><td></td><td></td></tr><tr><td></td><td></td><td></td></tr></table>				1/1						<table border="1"><tr><td></td><td></td><td></td></tr><tr><td></td><td></td><td>1/1</td></tr><tr><td></td><td></td><td></td></tr></table> 2 post						1/1				<table border="1"><tr><td></td><td></td><td></td></tr><tr><td>0/1</td><td></td><td></td></tr><tr><td></td><td></td><td></td></tr></table>				0/1						<table border="1"><tr><td></td><td></td><td></td></tr><tr><td>1/1</td><td></td><td>2/2</td></tr><tr><td></td><td></td><td></td></tr></table> 1/1 lob				1/1		2/2				<table border="1"><tr><td></td><td></td><td>1/1</td></tr><tr><td></td><td></td><td>1/1</td></tr><tr><td>1/3</td><td></td><td></td></tr></table> 1 post 1 miss.			1/1			1/1	1/3			<table border="1"><tr><td></td><td></td><td></td></tr><tr><td></td><td></td><td></td></tr><tr><td>3/3</td><td></td><td>1/1</td></tr></table> 2/2 lob							3/3		1/1
1/1																																																																					
		1/1																																																																			
0/1																																																																					
1/1		2/2																																																																			
		1/1																																																																			
		1/1																																																																			
1/3																																																																					
3/3		1/1																																																																			

TOTAL

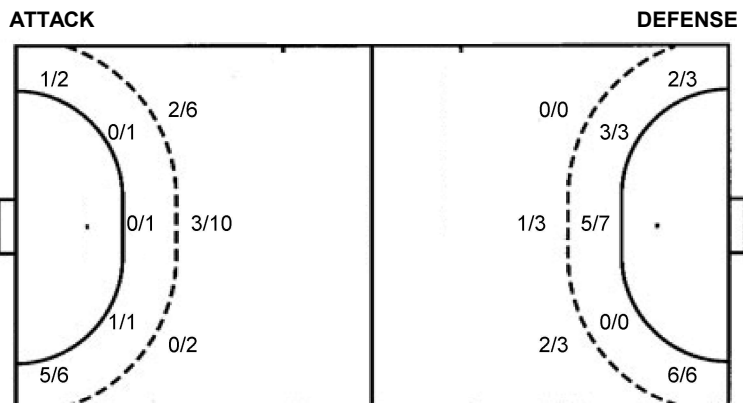
1/3	2/2
1/1	2/2
9/16	6/7

3 post 4 miss. 3 block 3/3 lob

Saves distribution goalkeepers

1 C. Lu	17 Y. Hu	TOTAL																											
<table border="1"><tr><td>0/3</td><td>0/2</td><td></td></tr><tr><td>0/2</td><td>0/1</td><td>0/1</td></tr><tr><td>0/6</td><td>0/1</td><td>0/5</td></tr></table>	0/3	0/2		0/2	0/1	0/1	0/6	0/1	0/5	<table border="1"><tr><td>0/1</td><td></td><td>0/1</td></tr><tr><td></td><td></td><td>0/2</td></tr><tr><td>0/3</td><td>2/2</td><td>1/7</td></tr></table>	0/1		0/1			0/2	0/3	2/2	1/7	<table border="1"><tr><td>0/4</td><td>0/2</td><td>0/1</td></tr><tr><td>0/2</td><td>0/1</td><td>0/3</td></tr><tr><td>0/9</td><td>2/3</td><td>1/12</td></tr></table>	0/4	0/2	0/1	0/2	0/1	0/3	0/9	2/3	1/12
0/3	0/2																												
0/2	0/1	0/1																											
0/6	0/1	0/5																											
0/1		0/1																											
		0/2																											
0/3	2/2	1/7																											
0/4	0/2	0/1																											
0/2	0/1	0/3																											
0/9	2/3	1/12																											

Shots by position



7m penalties	3/4	7m penalties	0/0
Fastbreak	2/3	Fastbreak	4/5
Breakthrough	7/8	Breakthrough	11/15
Long dist.	0/0	Long dist.	2/2

Shooting statistics

Position	Goals	Sav.	Miss.	Post	Blk.	Total	%
Back (9m)	5	5	4	1	3	18	28
Line (6m)	1	2	0	0	0	3	33
Wing	6	1	0	1	0	8	75
7m penalties	3	1	0	0	0	4	75
Fastbreak	2	0	0	1	0	3	67
Breakthrough	7	1	0	0	0	8	88
Total	24	10	4	3	3	44	55

Jersey number Tot. Total shooting 6m 6m (line) shooting 9m 9m shooting Wng Wing shooting FB Fastbreak sh. 7m 7m penalty sh.
 Brk. Breakthrough sh. LD Long distance sh. As. Assists PC Pass clear chance E7 Earned 7m pen. TF Technical faults St. Steals
 2m 2m punishments C7. Committed 7m E2 Earned 2m pun. YC. Yellow cards R/B Red/Blue cards Blk. Blocks S Starting Line-up



26th IHF Women's World Championship

Denmark • Norway • Sweden

Group A, 1. round



Match Team Statistics

Match No. 14

Sweden 36 - 24 P.R. of China

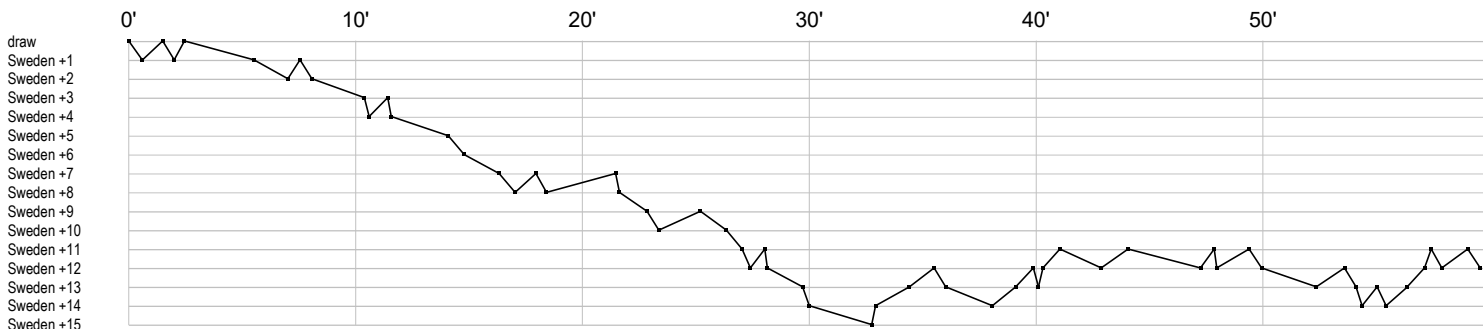
(22 - 8) (14 - 16)

1.12.2023. 20:30

Attendance: 8407

Scandinaviuim

Referees: Andrej Budzak (SVK) / Michal Zahradnik (SVK)



Sweden

1 Bundsen J	r r ssst r s r r s s r s r
3 Koppang N	g g g f g t g p g
4 Mellegard O	g t g f
7 Blohm L	g x g x f c g
8 Roberts J	a g tf a g a g x g c t a p g
17 Dano N	a a f a gg b f g t g a t f
19 Lagerquist A	p
21 Eriksson E	r sr r r r r r r r r sr r r r r
23 Lindkvist E	a t a g a g t
24 Hagman N	c g t gg g
29 Thorlacius	f a a ag
35 Hvenfelt S	g ag b x g g g
38 Hansson E	t g a
42 Karlsson J	p f a a a f a
44 De Jong D	a t g g a
54 Axné T	t f g t p c a2

P.R. of China

1 Lu C	r r r r r rr r r r r a r r r r r
5 Wang J	t
7 Jiang Y	
11 Liu C	g b f e f p t p t g g
12 Li X	tt p t g f t t f a t
13 Zhao X	
14 Zhou M	g g t f a f t
17 Hu Y	r r r r sr r r r sr asr r r r
18 Wei N	f tf g fa g e f b a
21 Zhang G	a
22 Ma J	g
23 Zhuang H	a bf f t g
27 Gong L	x a i f
28 Liu X	g t g b t g b g
34 Jin M	fff f f a f g g t a g e g
53 Liu Y	e g g t g g g t g

In game	g Goal scored	f Missed shot	a Assist	t Technical faults	b Steal
2 2min suspension	e Eearned 7m	c Committed 7m	y Yellow card	r Red Card	k Blue card
i Eearned 2min.	x Block	4 4min suspension	p Pass for clear chance	s Saved shot	r Received goal