



# 26th IHF Women's World Championship

Denmark • Norway • Sweden

Group D, 1. round



Match Team Statistics

Match No. 12

## France 30 - 29 Angola

(18 - 15) (12 - 14)

30.11.2023. 20:30

Attendance: 1830

DNB Arena

Referees: Amar Konjicanin (BIH) / Dino Konjicanin (BIH)

### France

| Players |                   | Goals / shots |       |     |     |     |      |     |       |      | Attack |     |    |    |    | Def. |     |    | Penalties |    |    | TP |   |  |       |
|---------|-------------------|---------------|-------|-----|-----|-----|------|-----|-------|------|--------|-----|----|----|----|------|-----|----|-----------|----|----|----|---|--|-------|
| #       | Surname and name  | S             | Tot.  | %   | 9m  | 6m  | Wing | 7m  | FB    | Brk. | LD     | As. | PC | E7 | E2 | TF   | St. | C7 | Blk       | YC | 2m | R  | B |  |       |
| 1       | GLAUSER Laura     | S             |       |     |     |     |      |     |       |      |        |     |    |    |    |      |     |    |           |    |    |    |   |  | 30:41 |
| 2       | NOCANDY Méline    | S             | 0/1   | 0   |     |     |      |     |       | 0/1  |        |     |    |    |    |      | 4   | 1  |           |    |    |    |   |  | 13:41 |
| 3       | TOUBLANC Alicia   | S             | 6/11  | 55  |     |     | 4/8  | 1/2 | 1/1   |      |        |     |    |    |    |      |     |    |           |    |    |    |   |  | 34:05 |
| 6       | VALENTINI Chloé   | S             | 6/9   | 67  |     | 2/2 |      |     | 4/7   |      |        |     |    |    |    | 1    |     |    |           |    |    |    |   |  | 37:43 |
| 8       | LASSOURCE Coralie |               | 4/5   | 80  |     |     | 1/2  |     | 3/3   |      |        |     |    |    | 1  |      |     |    |           |    |    |    |   |  | 22:15 |
| 10      | ZAADI DEUNA Grace |               |       |     |     |     |      |     |       |      |        |     |    |    |    |      | 2   |    |           |    |    |    |   |  | 2:51  |
| 20      | FLIPPES Laura     | S             | 4/5   | 80  | 1/1 |     |      |     | 2/3   | 1/1  |        | 7   | 4  | 1  |    | 2    | 2   |    |           |    |    |    | 1 |  | 40:03 |
| 21      | KANOR Orlane      |               | 3/4   | 75  | 3/4 |     |      |     |       |      |        | 1   |    |    |    | 2    |     | 1  | 1         |    |    |    |   |  | 21:04 |
| 22      | HORACEK Tamara    |               | 2/5   | 40  | 1/2 |     |      | 0/1 | 0/1   | 1/1  |        | 5   | 3  |    |    | 2    | 3   |    |           |    |    |    |   |  | 43:36 |
| 23      | LASSOURCE Déborah |               |       |     |     |     |      |     |       |      |        |     |    |    |    |      |     |    |           |    |    |    |   |  |       |
| 26      | FOPPA Pauletta    | S             | 1/1   | 100 |     | 1/1 |      |     |       |      |        | 1   | 1  | 1  | 3  | 1    | 3   |    | 1         |    | 1  |    |   |  | 60:00 |
| 27      | NZE MINKO Estelle | S             | 2/3   | 67  | 2/2 |     |      |     |       |      | 0/1    | 5   | 4  |    |    | 2    | 1   |    |           |    |    | 1  |   |  | 38:13 |
| 31      | GRANIER Lucie     |               | 1/4   | 25  |     | 1/1 |      |     | 0/2   | 0/1  |        |     |    |    |    | 1    |     |    |           |    |    |    |   |  | 25:55 |
| 32      | BOUKTIT Sarah     |               |       |     |     |     |      |     |       |      |        |     |    |    |    |      |     |    |           |    |    |    |   |  |       |
| 34      | GRANDVEAU Léna    |               | 1/1   | 100 |     |     |      |     |       | 1/1  |        |     | 2  | 1  | 1  |      |     |    |           |    |    |    |   |  | 20:34 |
| 99      | SAKO Hatadou      |               |       |     |     |     |      |     |       |      |        | 1   |    |    |    |      |     |    |           |    |    |    |   |  | 29:19 |
|         | Team / bench      |               |       |     |     |     |      |     |       |      |        |     |    |    |    |      |     |    |           |    |    |    |   |  |       |
|         | UKUPNO            |               | 30/49 | 61  | 7/9 | 4/4 | 5/10 | 1/3 | 10/17 | 3/5  | 0/1    | 20  | 15 | 3  | 5  | 17   | 10  | 1  | 2         | 0  | 3  | 0  | 0 |  |       |

| Goalkeepers |                  | Saves / shots |    |      |     |      |     |     |      |     |
|-------------|------------------|---------------|----|------|-----|------|-----|-----|------|-----|
| #           | Surname and name | Tot.          | %  | 9m   | 6m  | Wing | 7m  | FB  | Brk. | LD  |
| 1           | GLAUSER Laura    | 3/20          | 15 | 3/14 | 0/4 | 0/1  |     |     | 0/1  |     |
| 99          | SAKO Hatadou     | 8/20          | 40 | 6/11 | 0/3 | 2/3  | 0/1 |     | 0/2  |     |
|             | TOTAL            | 11/40         | 28 | 9/25 | 0/7 | 2/4  | 0/1 | 0/0 | 0/3  | 0/0 |

Coach: Olivier Krumbholz

Number of attacks: 64, Efficiency: 47%, Average Duration: 22.09 seconds

### Attack by type of defense

|             | Shots | 9m  | 6m  | Wing | TF | E7 | E2 |
|-------------|-------|-----|-----|------|----|----|----|
| On def. 6-0 | 19/28 | 7/9 | 4/4 | 5/10 | 17 | 3  | 5  |
| Fastbreak   | 10/17 |     |     |      | 0  | 0  | 0  |

### Defense by type

|            | Total | 9m    | 6m  | Wing | Stl. | C7 | 2m |
|------------|-------|-------|-----|------|------|----|----|
| Def. 6-0   | 20/34 | 10/21 | 6/6 | 2/5  | 9    | 1  | 0  |
| Def. 5-1   | 7/8   | 6/7   | 0/0 | 0/0  | 1    | 0  | 0  |
| Def. 3-2-1 | 1/2   | 0/1   | 1/1 | 0/0  | 0    | 0  | 0  |
| Fastbreak  | 0/0   |       |     |      | 0    | 0  | 3  |

### Attack with superiority / minority / goalkeeper out

|        | Attack |      |       |    | Reaction |    |      |
|--------|--------|------|-------|----|----------|----|------|
|        | Att.   | Eff. | Shots | TF | FB       | LD | Tot. |
| 6 on 6 | 48     | 46%  | 22/34 | 14 |          |    |      |
| 6 on 5 | 12     | 50%  | 6/10  | 2  |          |    |      |
| 5 on 6 | 4      | 50%  | 2/3   | 1  |          |    |      |

Player superiority / GK out counted at the end of attack (in case it changes during attack)

### Defense with superiority / minority / goalkeeper out

|                 | Attack |      |       |    | Reaction |     |      |
|-----------------|--------|------|-------|----|----------|-----|------|
|                 | Att.   | Eff. | Shots | TF | FB       | LD  | Tot. |
| 7 on 6 (GK out) | 2      | 100% | 2/2   | 0  | 0/0      | 0/0 | 0/0  |
| 6 on 6 (GK out) | 9      | 33%  | 3/4   | 5  | 4/4      | 0/1 | 4/5  |
| 6 on 6          | 49     | 43%  | 21/31 | 18 |          |     |      |
| 6 on 5          | 5      | 60%  | 3/5   | 0  |          |     |      |

Numbers show attacking numbers of opponent. Lower efficiency of opponent means better defense of this team

# Jersey number Tot. Total shooting 6m 6m (line) shooting 9m 9m shooting Wng Wing shooting FB Fastbreak sh. 7m 7m penalty sh.  
 Brk. Breakthrough sh. LD Long distance sh. As. Assists PC Pass clear chance E7 Earned 7m pen. TF Technical faults St. Steals  
 2m 2m punishments C7. Committed 7m E2 Earned 2m pun. YC. Yellow cards R/B Red/Blue cards Blk. Blocks S Starting Line-up



# 26th IHF Women's World Championship

Denmark • Norway • Sweden

Group D, 1. round



## Match Team Statistics

Match No. 12

## France 30 - 29 Angola

(18 - 15) (12 - 14)

30.11.2023. 20:30

Attendance: 1830

DNB Arena

Referees: Amar Konjicanin (BIH) / Dino Konjicanin (BIH)

### Shot distribution by player

#### 2 M. Nocandy

|  |  |  |
|--|--|--|
|  |  |  |
|  |  |  |
|  |  |  |

1 post

#### 3 A. Toublanc

|     |     |     |
|-----|-----|-----|
|     | 1/1 |     |
| 0/1 | 0/1 | 1/1 |
| 2/2 |     | 2/2 |

3 miss.

#### 6 C. Valentini

|     |  |     |
|-----|--|-----|
|     |  |     |
| 1/1 |  | 2/3 |
| 0/1 |  | 1/1 |

1 miss. 2/2 lob

#### 8 C. Lassource

|     |  |     |
|-----|--|-----|
|     |  |     |
| 1/1 |  |     |
| 2/2 |  | 1/1 |

1 post

#### 10 G. Zaadi Deuna

|  |  |  |
|--|--|--|
|  |  |  |
|  |  |  |
|  |  |  |

#### 20 L. Flippes

|     |     |     |
|-----|-----|-----|
|     |     |     |
| 1/1 |     | 0/1 |
| 1/1 | 2/2 |     |

#### 21 O. Kanor

|     |     |     |
|-----|-----|-----|
|     |     |     |
|     |     |     |
| 1/1 | 0/1 | 2/2 |

#### 22 T. Horacek

|  |  |     |
|--|--|-----|
|  |  |     |
|  |  | 1/2 |
|  |  | 1/1 |

2 post

#### 23 D. Lassource

|  |  |  |
|--|--|--|
|  |  |  |
|  |  |  |
|  |  |  |

#### 26 P. Foppa

|  |  |     |
|--|--|-----|
|  |  |     |
|  |  |     |
|  |  | 1/1 |

#### 27 E. Nze Minko

|     |  |     |
|-----|--|-----|
|     |  |     |
| 1/1 |  | 1/1 |
| 0/1 |  |     |

#### 31 L. Granier

|     |  |     |
|-----|--|-----|
|     |  |     |
| 0/2 |  |     |
|     |  | 1/1 |

1 post

#### 32 S. Bouktif

|  |  |  |
|--|--|--|
|  |  |  |
|  |  |  |
|  |  |  |

#### 34 L. Grandveau

|     |  |  |
|-----|--|--|
|     |  |  |
|     |  |  |
| 1/1 |  |  |

### TOTAL

|     |     |     |
|-----|-----|-----|
|     | 1/1 |     |
| 4/7 | 0/1 | 5/8 |
| 7/9 | 2/3 | 9/9 |

5 post 4 miss. 2/2 lob

### Saves distribution goalkeepers

#### 1 L. Glauser

|     |     |     |
|-----|-----|-----|
| 0/2 |     | 0/3 |
| 0/2 | 2/2 | 0/2 |
| 1/5 | 0/1 | 0/3 |

#### 99 H. Sako

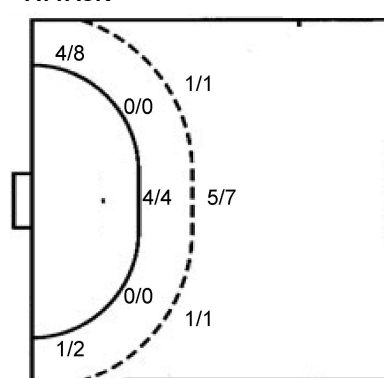
|     |     |     |
|-----|-----|-----|
|     |     | 0/2 |
| 0/1 | 3/3 | 1/4 |
| 0/1 | 3/3 | 1/5 |

### TOTAL

|     |     |     |
|-----|-----|-----|
| 0/2 |     | 0/5 |
| 0/3 | 5/5 | 1/6 |
| 1/6 | 3/4 | 1/8 |

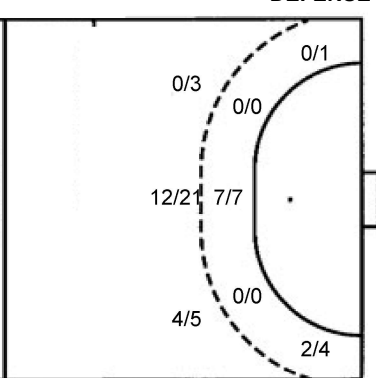
### Shots by position

#### ATTACK



7m penalties 1/3  
Fastbreak 10/17  
Breakthrough 3/5  
Long dist. 0/1

#### DEFENSE



7m penalties 1/1  
Fastbreak 0/0  
Breakthrough 3/3  
Long dist. 0/0

### Shooting statistics

| Position     | Goals     | Sav.     | Miss.    | Post     | Blk.     | Total     | %         |
|--------------|-----------|----------|----------|----------|----------|-----------|-----------|
| Back (9m)    | 7         | 2        | 0        | 0        | 0        | 9         | 78        |
| Line (6m)    | 4         | 0        | 0        | 0        | 0        | 4         | 100       |
| Wing         | 5         | 2        | 2        | 1        | 0        | 10        | 50        |
| 7m penalties | 1         | 0        | 1        | 1        | 0        | 3         | 33        |
| Fastbreak    | 10        | 4        | 1        | 2        | 0        | 17        | 59        |
| Breakthrough | 3         | 1        | 0        | 1        | 0        | 5         | 60        |
| <b>Total</b> | <b>30</b> | <b>9</b> | <b>4</b> | <b>5</b> | <b>0</b> | <b>48</b> | <b>63</b> |

# Jersey number Tot. Total shooting 6m 6m (line) shooting 9m 9m shooting Wng Wing shooting FB Fastbreak sh. 7m 7m penalty sh.  
Brk. Breakthrough sh. LD Long distance sh. As. Assists PC Pass clear chance E7 Earned 7m pen. TF Technical faults St. Steals  
2m 2m punishments C7. Committed 7m E2 Earned 2m pun. YC. Yellow cards R/B Red/Blue cards Blk. Blocks S Starting Line-up

Handball statistics and livescore by Toma-soft ltd (www.toma-soft.hr)



# 26th IHF Women's World Championship

Denmark • Norway • Sweden

Group D, 1. round



Match Team Statistics

Match No. 12

## France 30 - 29 Angola

(18 - 15) (12 - 14)

30.11.2023. 20:30

Attendance: 1830

DNB Arena

Referees: Amar Konjicanin (BIH) / Dino Konjicanin (BIH)

### Angola

| #            | Surname and name                     | S | Goals / shots |     |       |     |      |     |     |      | Attack |     |    |    |    | Def. |     |    | Penalties |    |    | TP |   |   |   |   |       |
|--------------|--------------------------------------|---|---------------|-----|-------|-----|------|-----|-----|------|--------|-----|----|----|----|------|-----|----|-----------|----|----|----|---|---|---|---|-------|
|              |                                      |   | Tot.          | %   | 9m    | 6m  | Wing | 7m  | FB  | Brk. | LD     | As. | PC | E7 | E2 | TF   | St. | C7 | Blk       | YC | 2m |    | R | B |   |   |       |
| 1            | ALBERTO Marta Samuel                 |   |               |     |       |     |      |     |     |      |        |     |    |    |    |      |     |    |           |    |    |    |   |   |   |   | 43:39 |
| 5            | MARIO Liliane Martines               |   |               |     |       |     |      |     |     |      |        |     |    |    |    |      |     |    |           |    |    |    |   |   |   |   | 8:23  |
| 6            | MACHADO Juliana José                 |   | 1/1           | 100 |       |     |      | 1/1 |     |      |        |     |    |    | 1  |      |     |    | 6         | 2  |    |    |   |   |   |   | 44:32 |
| 7            | ROSARIO Dolores Palmira Lingombe Do  | S | 1/2           | 50  | 1/1   |     |      | 0/1 |     |      |        |     |    |    |    |      |     |    |           |    | 1  |    |   |   |   |   | 19:49 |
| 8            | PAULO Helena Gilda Simao             | S | 3/7           | 43  | 2/5   |     |      | 0/1 |     |      |        |     |    |    | 1  |      |     |    |           |    | 4  |    |   |   |   |   | 31:57 |
| 9            | SANTOS Natalia Maria Bernardo Dos    | S | 1/1           | 100 |       |     |      |     | 1/1 |      |        |     |    |    | 1  |      |     |    |           |    |    |    |   | 1 |   |   | 44:14 |
| 10           | KASSOMA Albertina Da Cruz            | S | 5/5           | 100 |       |     | 5/5  |     |     |      |        |     |    |    | 1  | 1    | 3   | 1  | 1         | 1  |    |    |   | 1 |   |   | 50:36 |
| 11           | QUIZELETE Marilia Jacinta José       |   |               |     |       |     |      |     |     |      |        |     |    |    |    |      |     |    |           |    |    |    |   |   |   |   | 14:22 |
| 13           | FONSECA Natalia Mafela Kamalandua    |   | 1/2           | 50  |       |     |      | 0/1 |     |      |        |     |    |    |    |      |     |    |           |    |    |    |   | 1 |   |   | 8:47  |
| 16           | ALMEIDA Teresa Patricia L. Filipe De |   |               |     |       |     |      |     |     |      |        |     |    |    |    |      |     |    |           |    |    |    |   |   |   |   | 11:36 |
| 18           | GABRIEL Chelcia Cristina             |   | 2/2           | 100 | 2/2   |     |      |     |     |      |        |     |    |    | 1  |      |     |    |           |    | 1  |    |   |   |   |   | 6:34  |
| 20           | PASCOAL Stelvia De Jesus             | S | 3/8           | 38  | 3/8   |     |      |     |     |      |        |     |    |    | 1  | 1    |     |    |           |    | 3  |    |   | 1 |   |   | 43:58 |
| 25           | VENANCIO Liliana Da Silva            |   | 1/1           | 100 |       |     |      | 1/1 |     |      |        |     |    |    |    |      |     |    |           |    | 2  | 1  |   |   |   | 1 | 22:53 |
| 35           | CARLOS Azenaide Danila José          | S | 5/5           | 100 | 3/3   | 1/1 | 1/1  |     |     |      |        |     |    |    | 1  |      |     |    |           |    | 3  | 1  |   |   |   |   | 32:34 |
| 78           | BELO Bernardeth Carla                |   |               |     |       |     |      |     |     |      |        |     |    |    |    |      |     |    |           |    |    |    |   |   |   |   |       |
| 90           | GUIALO Isabel Evelize Wangimba       | S | 6/11          | 55  | 5/10  |     |      |     |     |      |        |     |    |    | 6  | 1    |     |    |           |    | 1  |    |   |   |   |   | 36:06 |
| Team / bench |                                      |   |               |     |       |     |      |     |     |      |        |     |    |    |    |      |     |    |           |    |    |    |   |   |   |   |       |
| UKUPNO       |                                      |   | 29/45         | 64  | 16/29 | 7/7 | 2/5  | 1/1 | 0/0 | 3/3  | 0/0    |     |    |    | 10 | 5    | 1   | 4  | 23        | 5  | 3  | 0  | 0 | 5 | 0 | 0 |       |

| #     | Surname and name                     | Saves / shots |    |     |     |      |     |      |      |     |
|-------|--------------------------------------|---------------|----|-----|-----|------|-----|------|------|-----|
|       |                                      | Tot.          | %  | 9m  | 6m  | Wing | 7m  | FB   | Brk. | LD  |
| 1     | ALBERTO Marta Samuel                 | 7/33          | 21 | 1/5 | 0/4 | 2/6  | 0/1 | 2/12 | 1/4  | 1/1 |
| 16    | ALMEIDA Teresa Patricia L. Filipe De | 3/7           | 43 | 1/4 |     | 0/1  |     | 2/2  |      |     |
| TOTAL |                                      | 10/40         | 25 | 2/9 | 0/4 | 2/7  | 0/1 | 4/14 | 1/4  | 1/1 |

Coach: Vivaldo Francisco Eduardo

Number of attacks: 65, Efficiency: 45%, Average Duration: 33.63 seconds

### Attack by type of defense

|               | Shots | 9m    | 6m  | Wing | TF | E7 | E2 |
|---------------|-------|-------|-----|------|----|----|----|
| On def. 6-0   | 20/34 | 10/21 | 6/6 | 2/5  | 21 | 1  | 3  |
| On def. 5-1   | 7/8   | 6/7   | 0/0 | 0/0  | 1  | 0  | 1  |
| On def. 3-2-1 | 1/2   | 0/1   | 1/1 | 0/0  | 1  | 0  | 0  |
| Fastbreak     | 0/0   |       |     |      | 0  | 0  | 0  |

### Defense by type

|           | Total | 9m  | 6m  | Wing | Stl. | C7 | 2m |
|-----------|-------|-----|-----|------|------|----|----|
| Def. 6-0  | 19/28 | 7/9 | 4/4 | 5/10 | 5    | 3  | 0  |
| Fastbreak | 10/17 |     |     |      | 0    | 0  | 5  |

### Attack with superiority / minority / goalkeeper out

|                 | Attack |      |       |    | Reaction |     |      |
|-----------------|--------|------|-------|----|----------|-----|------|
|                 | Att.   | Eff. | Shots | TF | FB       | LD  | Tot. |
| 7 on 6 (GK out) | 2      | 100% | 2/2   | 0  | 0/0      | 0/0 | 0/0  |
| 6 on 6 (GK out) | 9      | 33%  | 3/4   | 5  | 4/4      | 0/1 | 4/5  |
| 6 on 6          | 49     | 43%  | 21/31 | 18 |          |     |      |
| 6 on 5          | 5      | 60%  | 3/5   | 0  |          |     |      |

Player superiority / GK out counted at the end of attack (in case it changes during attack)

### Defense with superiority / minority / goalkeeper out

|        | Attack |      |       |    | Reaction |    |      |
|--------|--------|------|-------|----|----------|----|------|
|        | Att.   | Eff. | Shots | TF | FB       | LD | Tot. |
| 6 on 6 | 48     | 46%  | 22/34 | 14 |          |    |      |
| 6 on 5 | 12     | 50%  | 6/10  | 2  |          |    |      |
| 5 on 6 | 4      | 50%  | 2/3   | 1  |          |    |      |

Numbers show attacking numbers of opponent. Lower efficiency of opponent means better defense of this team

# Jersey number Tot. Total shooting 6m 6m (line) shooting 9m 9m shooting Wng Wing shooting FB Fastbreak sh. 7m 7m penalty sh.  
 Brk. Breakthrough sh. LD Long distance sh. As. Assists PC Pass clear chance E7 Earned 7m pen. TF Technical faults St. Steals  
 2m 2m punishments C7. Committed 7m E2 Earned 2m pun. YC. Yellow cards R/B Red/Blue cards Blk. Blocks S Starting Line-up



# 26th IHF Women's World Championship

Denmark • Norway • Sweden

Group D, 1. round



## Match Team Statistics

Match No. 12

## France 30 - 29 Angola

(18 - 15) (12 - 14)

30.11.2023. 20:30

Attendance: 1830

DNB Arena

Referees: Amar Konjicanin (BIH) / Dino Konjicanin (BIH)

## Shot distribution by player

|                      |                      |                      |                       |                     |                      |                        |
|----------------------|----------------------|----------------------|-----------------------|---------------------|----------------------|------------------------|
| <b>5 L. Mario</b>    | <b>6 J. Machado</b>  | <b>7 D. Rosario</b>  | <b>8 H. Paulo</b>     | <b>9 N. Santos</b>  | <b>10 A. Kassoma</b> | <b>11 M. Quizelete</b> |
|                      | 1/1                  |                      |                       |                     |                      |                        |
|                      |                      | 0/1                  | 1/1                   |                     | 1/1                  |                        |
|                      |                      |                      | 1/1                   |                     | 1/1                  |                        |
|                      |                      |                      | 1/1                   | 0/2                 | 1/1                  |                        |
|                      |                      |                      |                       |                     | 1/1                  |                        |
|                      |                      |                      |                       |                     | 1/1 lob              |                        |
| <b>13 N. Fonseca</b> | <b>18 C. Gabriel</b> | <b>20 S. Pascoal</b> | <b>25 L. Venancio</b> | <b>35 A. Carlos</b> | <b>78 B. Belo</b>    | <b>90 I. Guialo</b>    |
|                      |                      |                      |                       |                     |                      | 1/1                    |
|                      |                      | 0/3                  |                       | 1/1                 |                      | 0/1                    |
| 1/1                  |                      | 0/1                  |                       | 1/1                 |                      | 2/2                    |
| 1 post               | 1/1                  | 0/1                  | 1/1                   | 1/1                 | 3/3                  | 1/2                    |
|                      |                      | 1 miss.              |                       |                     |                      | 1 post 2 block         |

## TOTAL

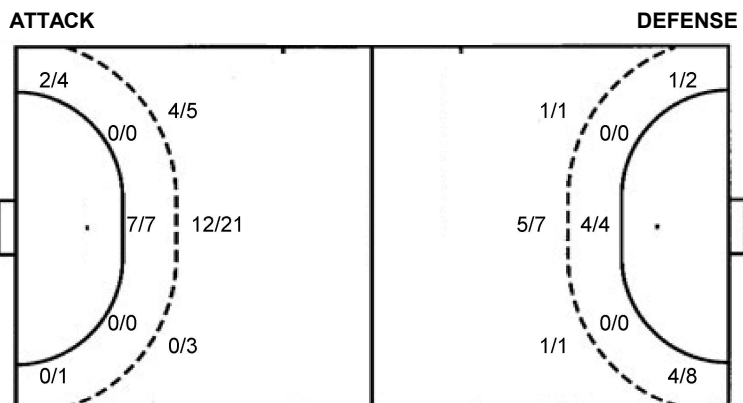
|     |     |     |
|-----|-----|-----|
| 2/2 |     | 5/5 |
| 3/3 | 0/5 | 5/6 |
| 5/6 | 1/4 | 7/8 |

2 post 1 miss. 2 block 1/1 lob

## Saves distribution goalkeepers

|                     |                      |              |
|---------------------|----------------------|--------------|
| <b>1 M. Alberto</b> | <b>16 T. Almeida</b> | <b>TOTAL</b> |
|                     |                      |              |
| 0/1                 |                      | 0/1          |
| 2/6                 | 1/1                  | 1/1          |
| 1/6                 |                      | 3/8          |
| 2/7                 | 1/2                  | 0/8          |
| 0/8                 | 0/1                  | 0/1          |
|                     | 0/1                  | 2/9          |
|                     |                      | 1/3          |
|                     |                      | 0/9          |

## Shots by position



|              |     |              |       |
|--------------|-----|--------------|-------|
| 7m penalties | 1/1 | 7m penalties | 1/3   |
| Fastbreak    | 0/0 | Fastbreak    | 10/17 |
| Breakthrough | 3/3 | Breakthrough | 3/5   |
| Long dist.   | 0/0 | Long dist.   | 0/1   |

## Shooting statistics

| Position     | Goals     | Sav.      | Miss.    | Post     | Blk.     | Total     | %         |
|--------------|-----------|-----------|----------|----------|----------|-----------|-----------|
| Back (9m)    | 16        | 9         | 1        | 1        | 2        | 29        | 55        |
| Line (6m)    | 7         | 0         | 0        | 0        | 0        | 7         | 100       |
| Wing         | 2         | 2         | 0        | 1        | 0        | 5         | 40        |
| 7m penalties | 1         | 0         | 0        | 0        | 0        | 1         | 100       |
| Fastbreak    | 0         | 0         | 0        | 0        | 0        | 0         | 0         |
| Breakthrough | 3         | 0         | 0        | 0        | 0        | 3         | 100       |
| <b>Total</b> | <b>29</b> | <b>11</b> | <b>1</b> | <b>2</b> | <b>2</b> | <b>45</b> | <b>64</b> |

# Jersey number Tot. Total shooting 6m 6m (line) shooting 9m 9m shooting Wng Wing shooting FB Fastbreak sh. 7m 7m penalty sh.  
 Brk. Breakthrough sh. LD Long distance sh. As. Assists PC Pass clear chance E7 Earned 7m pen. TF Technical faults St. Steals  
 2m 2m punishments C7. Committed 7m E2 Earned 2m pun. YC. Yellow cards R/B Red/Blue cards Blk. Blocks S Starting Line-up

Handball statistics and livescore by Toma-soft ltd (www.toma-soft.hr)



# 26th IHF Women's World Championship

Denmark • Norway • Sweden

Group D, 1. round



## Match Team Statistics

Match No. 12

## France 30 - 29 Angola

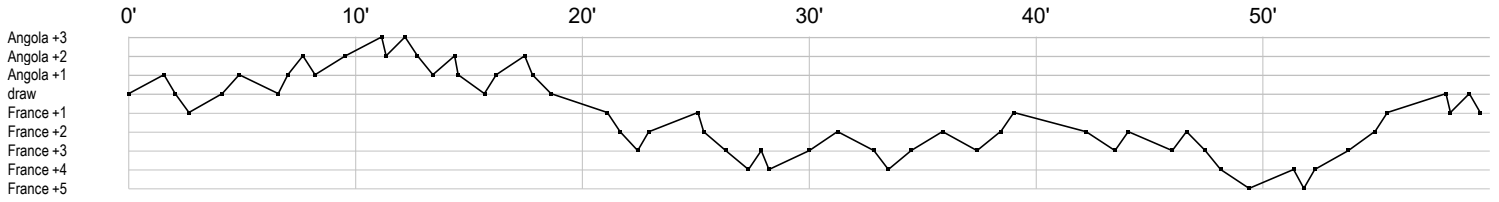
(18 - 15) (12 - 14)

30.11.2023. 20:30

Attendance: 1830

DNB Arena

Referees: Amar Konjicanin (BIH) / Dino Konjicanin (BIH)



### France

|                |                     |                                  |                  |
|----------------|---------------------|----------------------------------|------------------|
| 1 Glauser L    | r s r r r r r r r r | r s                              | r r r r r s r r  |
| 2 Nocandy M    | f t b t             | t                                | p                |
| 3 Toublanc A   | g f f f g           | g g                              | f g g            |
| 6 Valentini C  | f g g g g f         | f t                              | g g              |
| 8 Lassource C  |                     | g gi                             | g g f            |
| 10 Zaadi Deuna |                     |                                  | t t              |
| 20 Flippes L   | e t p a p a a bg    | a fb                             | t pg a a g       |
| 21 Kanor O     | g a x g             | f c                              | g t t            |
| 22 Horacek T   | a p f bp a f a g t  | ba                               | f ba t p g       |
| 23 Lassource D |                     |                                  |                  |
| 26 Foppa P     | i e b 2 g bp        | x                                | bi a t i         |
| 27 Nze Minko E | p g p a f 2         | a                                | t bp t a a g p a |
| 31 Granier L   |                     | f f g t                          | f                |
| 32 Bouktit S   |                     |                                  |                  |
| 34 Grandveau L |                     | g p                              | ie p             |
| 99 Sako H      |                     | r r s a r r r r sr sr s sr r r r | s s r            |

### Angola

|                |                                 |         |               |           |           |
|----------------|---------------------------------|---------|---------------|-----------|-----------|
| 1 Alberto M    | r r s s r s r r r r r r r r r r | r r     | s s r r r s   | r r r r r | r         |
| 5 Mario L      |                                 |         |               |           |           |
| 6 Machado J    |                                 | t t     | b             | p t t t   | g b       |
| 7 Rosario D    | g                               | t f     |               |           |           |
| 8 Paulo H      | g g t g t                       | t       | f f f t f     | a         |           |
| 9 Santos N     |                                 |         | p g           | 2c        |           |
| 10 Kassoma A   | i 2c                            | ig p g  | e g b         | t g g     |           |
| 11 Quizelete M |                                 |         |               |           |           |
| 13 Fonseca N   |                                 | f g 2   |               |           |           |
| 16 Almeida T   |                                 | s r rs  |               | s r       | r         |
| 18 Gabriel C   |                                 | g t     |               | g a       |           |
| 20 Pascoal S   | c f f                           | t       | g g t f a t 2 | f g f p   |           |
| 25 Venancio L  | t                               |         |               | t         | gb 2      |
| 35 Carlos A    | g t b a g g t t                 |         | g g           |           |           |
| 78 Belo B      |                                 |         |               |           |           |
| 90 Guialo I    | a g g gi                        | a f f a | f             | g a       | a a f g g |

|                   |               |                   |                         |                    |                 |
|-------------------|---------------|-------------------|-------------------------|--------------------|-----------------|
| In game           | g Goal scored | f Missed shot     | a Assist                | t Technical faults | b Steal         |
| 2 2min suspension | e Earned 7m   | c Committed 7m    | y Yellow card           | r Red Card         | k Blue card     |
| i Earned 2min.    | x Block       | 4 4min suspension | p Pass for clear chance | s Saved shot       | r Received goal |