



26th IHF Women's World Championship
Denmark • Norway • Sweden
Final Round, Finals



Match Team Statistics

Match No. 112

France 31 - 28 Norway
(20 - 17) (11 - 11)

17.12.2023. 19:00

Attendance: 12031

Jyske Bank Boxen

Referees: Bojan Lah (SLO) / David Sok (SLO)

France

Players		Goals / shots									Attack					Def.			Penalties				TP		
#	Surname and name	S	Tot.	%	9m	6m	Wing	7m	FB	Brk.	LD	As.	PC	E7	E2	TF	St.	C7	Blk	YC	2m	R		B	
1	GLAUSER Laura	S																							28:18
2	NOCANDY Méline		1/2	50						1/2			2		2	1	2								16:51
3	TOUBLANC Alicia	S	2/4	50			2/3		0/1								1	1							39:57
6	VALENTINI Chloé	S	4/5	80			3/3		0/1		1/1						1	1	1						46:04
8	LASSOURCE Coralie		0/1	0			0/1															1			14:28
10	ZAADI DEUNA Grace		0/1	0	0/1							1	1												10:45
20	FLIPPES Laura	S	2/2	100	1/1					1/1		1				1									14:50
21	KANOR Orlane		4/6	67	3/5	1/1							1					1	1			1			36:42
22	HORACEK Tamara	S	5/6	83	2/2			3/4				1						2							30:32
23	LASSOURCE Déborah													1				1							12:20
26	FOPPA Pauletta	S	1/1	100	1/1								1	3	2	1	3	3		1	1				56:58
27	NZE MINKO Estelle	S	3/5	60	1/1				1/2	1/2		3				2	3					1			30:58
31	GRANIER Lucie		1/2	50					1/1	0/1															19:14
32	BOUKTIT Sarah		3/4	75		1/1		2/3																	5:54
34	GRANDVEAU Léna		5/6	83	2/3	1/1				2/2		2	3	1		1	1								28:16
99	SAKO Hatadou												1												27:53
	Team / bench															2									
	UKUPNO		31/45	69	9/13	4/4	5/7	5/7	2/5	5/8	1/1	10	7	7	3	11	9	8	1	1	4	0	0		

Goalkeepers		Saves / shots								
#	Surname and name	Tot.	%	9m	6m	Wing	7m	FB	Brk.	LD
1	GLAUSER Laura	4/20	20	1/3	2/3	0/2	0/4		0/7	1/1
99	SAKO Hatadou	4/16	25	1/4		2/4	1/4	0/1	0/3	
	TOTAL	8/36	22	2/7	2/3	2/6	1/8	0/1	0/10	1/1

Coach: Olivier Krumbholz

Number of attacks: 54, Efficiency: 57%, Average Duration: 36.13 seconds

Attack by type of defense

	Shots	9m	6m	Wing	TF	E7	E2
On def. 6-0	23/32	9/13	4/4	5/7	11	7	3
Fastbreak	2/5				0	0	0

Defense by type

	Total	9m	6m	Wing	Stl.	C7	2m
Def. 6-0	17/24	5/8	1/3	3/5	9	7	0
Def. 5-1	2/2	0/0	0/0	1/1	0	1	0
Fastbreak	1/1				0	0	4

Attack with superiority / minority / goalkeeper out

	Attack				Reaction		
	Att.	Eff.	Shots	TF	FB	LD	Tot.
6 on 6 (GK out)	2	50%	1/1	1	0/0	0/0	0/0
6 on 5 (GK out)	1	100%	1/1	0	0/0	0/0	0/0
6 on 6	42	57%	24/33	9			
6 on 5	5	60%	3/5	0			
5 on 6	3	33%	1/2	1			
5 on 5	1	100%	1/1	0			

Player superiority / GK out counted at the end of attack (in case it changes during attack)

Defense with superiority / minority / goalkeeper out

	Attack				Reaction		
	Att.	Eff.	Shots	TF	FB	LD	Tot.
7 on 6 (GK out)	3	33%	1/2	1	0/0	0/0	0/0
6 on 6 (GK out)	1	100%	1/1	0	0/0	0/0	0/0
6 on 6	40	58%	23/28	12			
5 on 6	2	50%	1/1	1			
7 on 5 (GK out)	1	100%	1/1	0	0/0	0/0	0/0
6 on 5 (GK out)	1	0%	0/0	1	0/0	1/1	1/1
6 on 5	5	0%	0/2	3			
5 on 5	1	100%	1/1	0			

Numbers show attacking numbers of opponent. Lower efficiency of opponent means better defense of this team

Jersey number Tot. Total shooting 6m 6m (line) shooting 9m 9m shooting Wng Wing shooting FB Fastbreak sh. 7m 7m penalty sh.
Brk. Breakthrough sh. LD Long distance sh. As. Assists PC Pass clear chance E7 Earned 7m pen. TF Technical faults St. Steals
2m 2m punishments C7 Committed 7m E2 Earned 2m pun. YC Yellow cards R/B Red/Blue cards Blk. Blocks S Starting Line-up



26th IHF Women's World Championship

Denmark • Norway • Sweden

Final Round, Finals



Match Team Statistics

Match No. 112

France 31 - 28 Norway

(20 - 17) (11 - 11)

17.12.2023. 19:00

Attendance: 12031

Jyske Bank Boxen

Referees: Bojan Lah (SLO) / David Sok (SLO)

Shot distribution by player

2 M. Nocandy

0/1		
	1/1	

3 A. Toublanc

1/1	1/1	

1 post 1 miss.

6 C. Valentini

	0/1	
	1/1	2/2

1/1 lob

8 C. Lassource

	0/1	

10 G. Zaadi Deuna

0/1		

20 L. Flippes

	1/1	
1/1		

21 O. Kanor

1/1		
3/3	0/1	

1 miss.

22 T. Horacek

1/1	2/2	1/1
0/1		1/1

23 D. Lassource

26 P. Foppa

		1/1

27 E. Nze Minko

		2/2
		1/2

1 miss.

31 L. Granier

		0/1
1/1		

32 S. Bouktif

1/1		
1/1		
0/1		1/1

34 L. Grandveau

1/1		2/2
		2/2

1 block

TOTAL

4/6	2/2	5/5
1/1	2/4	3/4
6/8	2/3	5/6

1 post 3 miss. 1 block 1/1 lob

Saves distribution goalkeepers

1 L. Glauser

0/2		1/4
1/2	1/2	1/3
0/4		0/3

99 H. Sako

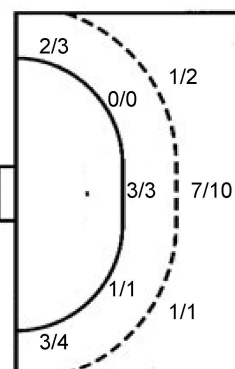
2/6	0/1	1/2
0/2		0/3
1/1		0/1

TOTAL

2/8	0/1	2/6
1/4	1/2	1/6
1/5		0/4

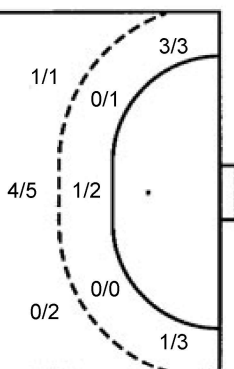
Shots by position

ATTACK



7m penalties	5/7
Fastbreak	2/5
Breakthrough	5/8
Long dist.	1/1

DEFENSE



7m penalties	7/8
Fastbreak	1/1
Breakthrough	10/10
Long dist.	0/1

Shooting statistics

Position	Goals	Sav.	Miss.	Post	Blk.	Total	%
Back (9m)	9	2	1	0	1	13	69
Line (6m)	4	0	0	0	0	4	100
Wing	5	1	1	0	0	7	71
7m penalties	5	2	0	0	0	7	71
Fastbreak	2	1	1	1	0	5	40
Breakthrough	5	3	0	0	0	8	63
Total	30	9	3	1	1	44	68

Jersey number Tot. Total shooting 6m 6m (line) shooting 9m 9m shooting Wng Wing shooting FB Fastbreak sh. 7m 7m penalty sh.
 Brk. Breakthrough sh. LD Long distance sh. As. Assists PC Pass clear chance E7 Earned 7m pen. TF Technical faults St. Steals
 2m 2m punishments C7. Committed 7m E2 Earned 2m pun. YC. Yellow cards R/B Red/Blue cards Blk. Blocks S Starting Line-up

Handball statistics and livescore by Toma-soft ltd (www.toma-soft.hr)



26th IHF Women's World Championship

Denmark • Norway • Sweden

Final Round, Finals



Match Team Statistics

Match No. 112

France 31 - 28 Norway

(20 - 17) (11 - 11)

17.12.2023. 19:00

Attendance: 12031

Jyske Bank Boxen

Referees: Bojan Lah (SLO) / David Sok (SLO)

Norway

#	Surname and name	S	Goals / shots									Attack					Def.			Penalties				TP						
			Tot.	%	9m	6m	Wing	7m	FB	Brk.	LD	As.	PC	E7	E2	TF	St.	C7	Blk	YC	2m	R	B							
6	AARDAHL Maren Nyland	S	1/3	33		1/3																	1						17:08	
7	SKOGRAND Stine Ruscetta	S	0/2	0			0/2																						51:59	
9	MORK Nora	S	8/10	80	0/2			7/7																1					31:49	
10	OFTEDAL Stine Bredal		6/7	86	2/3																								31:02	
12	SOLBERG Silje Margaretha	S	0/1	0										0/1															17:17	
13	BRATTSET DALE Kari																												11:32	
14	BREISTOL Kristine																												2:28	
15	INGSTAD Vilde Mortensen																												48:54	
16	LUNDE Katrine										1																		40:04	
21	BAKKERUD Ingvild Kristiansen	S	2/2	100																									28:06	
22	NOVAK Kristina Sirum																												0:40	
23	HERREM Camilla	S	4/4	100			3/3			1/1																			51:02	
24	SOLBERG-ISAKSEN Sanna Charlotte																												8:58	
25	REISTAD Henny Ella	S	5/6	83	3/3			0/1																					44:12	
26	HOVDEN Emilie Margrethe		2/2	100			1/1			1/1																			10:41	
33	DEILA Thale Rushfeldt																												24:08	
Team / bench																														
UKUPNO			28/37	76	5/8	1/3	4/6	7/8	1/1	10/10	0/1	6	6	8	4	18	1	7	1	2	3	0	0							

#	Surname and name	Saves / shots								
		Tot.	%	9m	6m	Wing	7m	FB	Brk.	LD
12	SOLBERG Silje Margaretha	2/16	13	1/4	0/2	0/3	0/4		1/3	
16	LUNDE Katrine	7/23	30	1/7	0/2	1/3	2/3	1/3	2/5	
TOTAL		9/39	23	2/11	0/4	1/6	2/7	1/3	3/8	0/0

Coach: Thorir Hergeirsson

Number of attacks: 54, Efficiency: 52%, Average Duration: 30.22 seconds

Attack by type of defense

	Shots	9m	6m	Wing	TF	E7	E2
On def. 6-0	17/24	5/8	1/3	3/5	16	7	3
On def. 5-1	2/2	0/0	0/0	1/1	2	1	1
Fastbreak	1/1				0	0	0

Defense by type

	Total	9m	6m	Wing	Stl.	C7	2m
Def. 6-0	23/32	9/13	4/4	5/7	1	7	0
Fastbreak	2/5				0	0	3

Attack with superiority / minority / goalkeeper out

	Attack				Reaction		
	Att.	Eff.	Shots	TF	FB	LD	Tot.
7 on 6 (GK out)	3	33%	1/2	1	0/0	0/0	0/0
6 on 6 (GK out)	1	100%	1/1	0	0/0	0/0	0/0
6 on 6	40	58%	23/28	12			
5 on 6	2	50%	1/1	1			
7 on 5 (GK out)	1	100%	1/1	0	0/0	0/0	0/0
6 on 5 (GK out)	1	0%	0/0	1	0/0	1/1	1/1
6 on 5	5	0%	0/2	3			
5 on 5	1	100%	1/1	0			

Player superiority / GK out counted at the end of attack (in case it changes during attack)

Defense with superiority / minority / goalkeeper out

	Attack				Reaction		
	Att.	Eff.	Shots	TF	FB	LD	Tot.
6 on 6 (GK out)	2	50%	1/1	1	0/0	0/0	0/0
6 on 5 (GK out)	1	100%	1/1	0	0/0	0/0	0/0
6 on 6	42	57%	24/33	9			
6 on 5	5	60%	3/5	0			
5 on 6	3	33%	1/2	1			
5 on 5	1	100%	1/1	0			

Numbers show attacking numbers of opponent. Lower efficiency of opponent means better defense of this team

Jersey number Tot. Total shooting 6m 6m (line) shooting 9m 9m shooting Wng Wing shooting FB Fastbreak sh. 7m 7m penalty sh.
 Brk. Breakthrough sh. LD Long distance sh. As. Assists PC Pass clear chance E7 Earned 7m pen. TF Technical faults St. Steals
 2m 2m punishments C7 Committed 7m E2 Earned 2m pun. YC. Yellow cards R/B Red/Blue cards Blk. Blocks S Starting Line-up



26th IHF Women's World Championship

Denmark • Norway • Sweden

Final Round, Finals



Match Team Statistics

Match No. 112

France 31 - 28 Norway

(20 - 17) (11 - 11)

17.12.2023. 19:00

Attendance: 12031

Jyske Bank Boxen

Referees: Bojan Lah (SLO) / David Sok (SLO)

Shot distribution by player

6 M. Aardahl

		0/1
		0/1
1/1		

7 S. Skogrand

0/1		
0/1		

9 N. Mork

3/3		2/2
0/1		
1/1		2/2

1 block

10 S. Oftedal

1/2	1/1	
2/2		1/1
1/1		

13 K. Brattset Dale

14 K. Breistol

15 V. Ingstad

21 I. Bakkerud

		1/1
		1/1

22 K. Novak

23 C. Herrem

1/1		
1/1		1/1
		1/1

24 S. Solberg-Isaksen

25 H. Reistad

		2/3
		2/2
1/1		

26 E. Hovden

1/1		
	1/1	

33 T. Deila

TOTAL

6/8	1/1	4/6
3/4	1/1	5/6
4/5		4/4

1 block

Saves distribution goalkeepers

12 S. Solberg

1/4	0/2	0/2
0/1	0/1	
0/1	0/1	1/3

16 K. Lunde

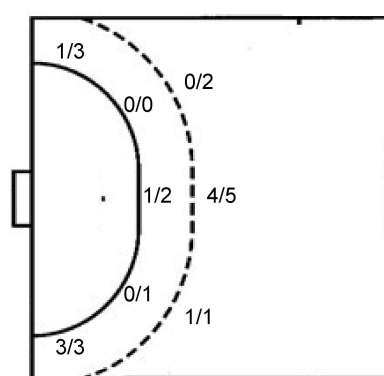
1/2		0/3
	2/3	1/4
2/7	1/1	0/3

TOTAL

2/6	0/2	0/5
0/1	2/4	1/4
2/8	1/2	1/6

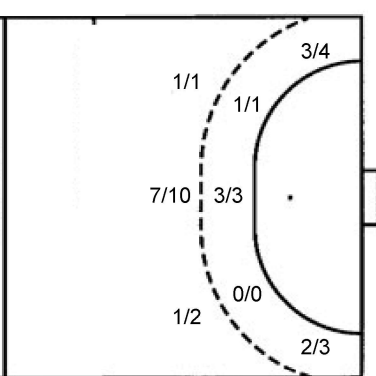
Shots by position

ATTACK



7m penalties 7/8
Fastbreak 1/1
Breakthrough 10/10
Long dist. 0/1

DEFENSE



7m penalties 5/7
Fastbreak 2/5
Breakthrough 5/8
Long dist. 1/1

Shooting statistics

Position	Goals	Sav.	Miss.	Post	Blk.	Total	%
Back (9m)	5	2	0	0	1	8	63
Line (6m)	1	2	0	0	0	3	33
Wing	4	2	0	0	0	6	67
7m penalties	7	1	0	0	0	8	88
Fastbreak	1	0	0	0	0	1	100
Breakthrough	10	0	0	0	0	10	100
Total	28	7	0	0	1	36	78

Jersey number Tot. Total shooting 6m 6m (line) shooting 9m 9m shooting Wng Wing shooting FB Fastbreak sh. 7m 7m penalty sh.
Brk. Breakthrough sh. LD Long distance sh. As. Assists PC Pass clear chance E7 Earned 7m pen. TF Technical faults St. Steals
2m 2m punishments C7. Committed 7m E2 Earned 2m pun. YC. Yellow cards R/B Red/Blue cards Blk. Blocks S Starting Line-up

Handball statistics and livescore by Toma-soft ltd (www.toma-soft.hr)



26th IHF Women's World Championship

Denmark • Norway • Sweden

Final Round, Finals



Match Team Statistics

Match No. 112

France 31 - 28 Norway

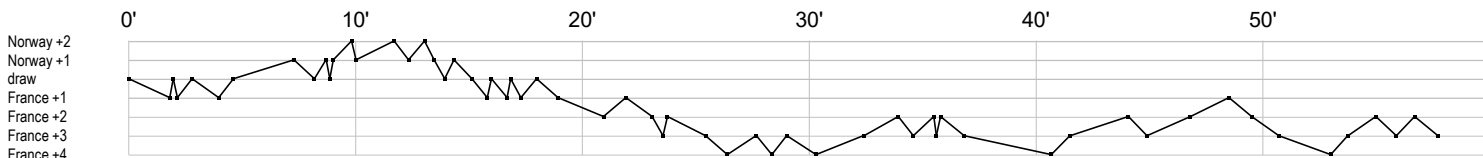
(20 - 17) (11 - 11)

17.12.2023. 19:00

Attendance: 12031

Jyske Bank Boxen

Referees: Bojan Lah (SLO) / David Sok (SLO)



France

1 Glauser L	s r r r s s r r r r r r r r r r r r r r r s r r r
2 Nocandy M	
3 Toublanc A	g
6 Valentini C	g g bg
8 Lassource C	f 2
10 Zaadi Deuna	f p a
20 Flippes L	g a t g
21 Kanor O	g g g p x c f f g2
22 Horacek T	g c g c a g g f g
23 Lassource D	e c
26 Foppa P	cy t ei c2 b bp ei e g c b
27 Nze Minko E	fa t a g g bg tf 2 b a b
31 Granier L	g f
32 Bouktit S	g g f
34 Grandveau L	a g p pa e f gb g p t g g
99 Sako H	r p r r r r s s r r r s r r r r r s

Norway

6 Aardahl M	f g y e f
7 Skogrand S	f e f
9 Mork N	y f pg pg g g f g t g i t g t t pg t
10 Oftedal S	p a t ei tg tg g t t g a g p f i t g p
12 Solberg S	s r r r f s r r r r r r r r
13 Brattset Dale	t
14 Breistol K	t
15 Ingstad V	e c c e
16 Lunde K	r s r r r r r r s r s s r r s r s s s r r r a r r
21 Bakkerud I	g c2 t c2 g a x
22 Novak K	
23 Herrem C	g gc g g
24 Solberg-Isaksen	
25 Reistad H	g a g g b g t e t g e t f c
26 Hovden E	g g
33 Deila T	e ai t 2c

In game	g Goal scored	f Missed shot	a Assist	t Technical faults	b Steal
2 2min suspension	e Earned 7m	c Committed 7m	y Yellow card	r Red Card	k Blue card
i Earned 2min.	x Block	4 4min suspension	p Pass for clear chance	s Saved shot	r Received goal