



# 26th IHF Women's World Championship

Denmark • Norway • Sweden

Final Round, Semifinals



Match Team Statistics

Match No. 108

## Denmark 28 - 29 Norway

(14 - 9) (9 - 14) (OT1: 5 - 6)

15.12.2023. 17:30

Attendance: 12136

Jyske Bank Boxen

Referees: Amar Konjicanin (BIH) / Dino Konjicanin (BIH)

### Denmark

#	Surname and name	S	Goals / shots								Attack					Def.			Penalties			TP													
			Tot.	%	9m	6m	Wing	7m	FB	Brk.	LD	As.	PC	E7	E2	TF	St.	C7	Blk	YC	2m		R	B											
1	TOFT Sandra																																		10:06
5	IVERSEN Sarah Aaberg		0/1	0		0/1																												30:48	
6	HAGESO Helena Elver																																	2:05	
8	HANSEN Anne Mette	S	5/6	83	1/2																													52:08	
10	HEINDAHL Kathrine Brothmann	S	4/4	100		4/4																												20:03	
11	HAUGSTED Line		1/1	100																														38:39	
16	REINHARDT Althea Rebecca	S																																52:40	
21	HANSEN Andrea Ulrikka Aagot																																	0:06	
23	JORGENSEN Kristina		7/11	64	2/6																													31:09	
25	JENSEN Trine Ostergaard	S																																	57:05
27	BURGAARD Louise Katharina	S	4/5	80	2/2	2/2																													46:38
31	PETERSEN Simone Cathrine		0/1	0																															8:28
32	HOJLUND Mie Enggrob	S	3/8	38	1/6	1/1																												26:12	
33	FRIIS Emma Cecilie Uhrskov	S	3/6	50		0/1	2/3	1/2																											65:41
34	IVERSEN Rikke		1/2	50		1/2																													46:31
45	SCAGLIONE Julie Mathiesen																																		1:17
Team / bench																																			
UKUPNO			28/45	62	6/16	8/11	2/3	5/6	0/0	7/9	0/0	7	3	6	4	16	3	9	1	1	5	0	0												

#	Surname and name	Saves / shots								
		Tot.	%	9m	6m	Wing	7m	FB	Brk.	LD
1	TOFT Sandra	1/8	13	1/3			0/4	0/1		
16	REINHARDT Althea Rebecca	13/34	38	6/10	1/1	3/7	1/4	1/1	1/11	
TOTAL		14/42	33	7/13	1/1	3/7	1/8	1/2	1/11	0/0

Coach: Jesper Haandbak Jensen

Number of attacks: 59, Efficiency: 47%, Average Duration: 39.05 seconds

### Attack by type of defense

	Shots	9m	6m	Wing	TF	E7	E2
On def. 6-0	23/39	6/16	8/11	2/3	16	6	4
Fastbreak	0/0				0	0	0

### Defense by type

	Total	9m	6m	Wing	Stl.	C7	2m
Def. 6-0	20/37	6/16	0/1	4/9	3	9	0
Fastbreak	1/2				0	0	5

### Attack with superiority / minority / goalkeeper out

	Attack				Reaction		
	Att.	Eff.	Shots	TF	FB	LD	Tot.
7 on 6 (GK out)	5	40%	2/3	2	0/0	1/1	1/1
6 on 6 (GK out)	5	20%	1/2	3	0/0	0/2	0/2
6 on 6	40	50%	20/32	8			
6 on 5	8	63%	5/6	2			
5 on 6	1	0%	0/0	1			

Player superiority / GK out counted at the end of attack (in case it changes during attack)

### Defense with superiority / minority / goalkeeper out

	Attack				Reaction		
	Att.	Eff.	Shots	TF	FB	LD	Tot.
7 on 6 (GK out)	1	100%	1/1	0	0/0	0/0	0/0
6 on 6 (GK out)	3	100%	3/3	0	0/0	0/0	0/0
6 on 6	42	43%	18/33	9			
5 on 6	1	100%	1/1	0			
6 on 5	10	60%	6/10	0			
5 on 5	1	0%	0/1	0			

Numbers show attacking numbers of opponent. Lower efficiency of opponent means better defense of this team

# Jersey number Tot. Total shooting 6m 6m (line) shooting 9m 9m shooting Wng Wing shooting FB Fastbreak sh. 7m 7m penalty sh.  
 Brk. Breakthrough sh. LD Long distance sh. As. Assists PC Pass clear chance E7 Earned 7m pen. TF Technical faults St. Steals  
 2m 2m punishments C7. Committed 7m E2 Earned 2m pun. YC. Yellow cards R/B Red/Blue cards Blk. Blocks S Starting Line-up



# 26th IHF Women's World Championship

Denmark • Norway • Sweden

Final Round, Semifinals



## Match Team Statistics

Match No. 108

## Denmark 28 - 29 Norway

(14 - 9) (9 - 14) (OT1: 5 - 6)

15.12.2023. 17:30

Attendance: 12136

Jyske Bank Boxen

Referees: Amar Konjicanin (BIH) / Dino Konjicanin (BIH)

## Shot distribution by player

### 5 S. Iversen

		0/1

### 6 H. Hageso


### 8 A. Hansen

1/1		
1/1	1/1	2/2

1 post

### 10 K. Heindahl

2/2		
1/1		1/1

### 11 L. Haugsted

1/1		

### 21 A. Hansen


### 23 K. Jorgensen

1/1	0/1	
		0/1
2/2		4/4

1 miss. 1 block

### 25 T. Jensen


### 27 L. Bargaard

		0/1
3/3	1/1	

### 31 S. Petersen

0/1		

### 32 M. Hojlund

0/1	0/1	
		1/1
	0/1	2/2

1 post 1 miss.

### 33 E. Friis

		0/1
1/1	0/1	1/1

1 post 1/1 lob

### 34 R. Iversen

1/2		

### 45 J. Scaglione


## TOTAL

3/4	0/2	
1/1		1/4
10/12	2/4	10/11

3 post 2 miss. 1 block 1/1 lob

## Saves distribution goalkeepers

### 1 S. Toft

	1/1	0/3
0/2		
0/1		0/1

### 16 A. Reinhardt

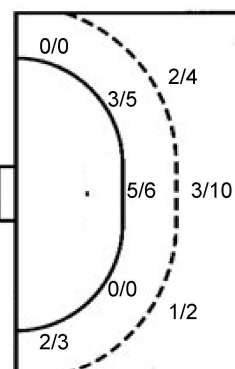
2/3		1/3
3/7	1/1	2/6
3/3	1/3	0/8

## TOTAL

2/3	1/1	1/6
3/9	1/1	2/6
3/4	1/3	0/9

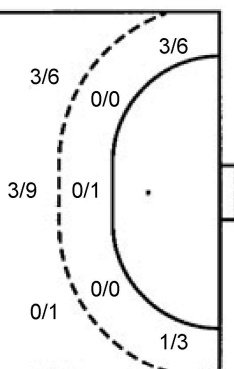
## Shots by position

### ATTACK



7m penalties 5/6  
Fastbreak 0/0  
Breakthrough 7/9  
Long dist. 0/0

### DEFENSE



7m penalties 7/9  
Fastbreak 1/2  
Breakthrough 10/11  
Long dist. 1/3

## Shooting statistics

Position	Goals	Sav.	Miss.	Post	Blk.	Total	%
Back (9m)	6	5	2	2	1	16	38
Line (6m)	8	2	0	1	0	11	73
Wing	2	1	0	0	0	3	67
7m penalties	5	1	0	0	0	6	83
Fastbreak	0	0	0	0	0	0	0
Breakthrough	7	2	0	0	0	9	78
<b>Total</b>	<b>28</b>	<b>11</b>	<b>2</b>	<b>3</b>	<b>1</b>	<b>45</b>	<b>62</b>

# Jersey number Tot. Total shooting 6m 6m (line) shooting 9m 9m shooting Wng Wing shooting FB Fastbreak sh. 7m 7m penalty sh.  
Brk. Breakthrough sh. LD Long distance sh. As. Assists PC Pass clear chance E7 Earned 7m pen. TF Technical faults St. Steals  
2m 2m punishments C7. Committed 7m E2 Earned 2m pun. YC. Yellow cards R/B Red/Blue cards Blk. Blocks S Starting Line-up

Handball statistics and livescore by Toma-soft ltd (www.toma-soft.hr)



# 26th IHF Women's World Championship

Denmark • Norway • Sweden

Final Round, Semifinals



Match Team Statistics

Match No. 108

## Denmark 28 - 29 Norway

(14 - 9) (9 - 14) (OT1: 5 - 6)

15.12.2023. 17:30

Attendance: 12136

Jyske Bank Boxen

Referees: Amar Konjicanin (BIH) / Dino Konjicanin (BIH)

### Norway

#	Surname and name	S	Goals / shots									Attack					Def.			Penalties				TP												
			Tot.	%	9m	6m	Wing	7m	FB	Brk.	LD	As.	PC	E7	E2	TF	St.	C7	Blk	YC	2m	R	B													
6	AARDAHL Maren Nyland	S	1/1	100																															40:18	
7	SKOGRAND Stine Ruscetta	S	1/4	25				1/3	0/1																										53:54	
9	MORK Nora	S	3/5	60	0/1					3/4																									38:09	
10	OFTEDAL Stine Bredal		5/9	56	1/3																														48:38	
12	SOLBERG Silje Margaretha		0/1	0																															48:09	
13	BRATTSET DALE Kari																																		8:30	
14	BREISTOL Kristine		0/2	0	0/2																														6:13	
15	INGSTAD Vilde Mortensen		0/1	0		0/1																													56:42	
16	LUNDE Katrine	S																																	17:36	
21	BAKKERUD Ingvild Kristiansen	S	0/3	0	0/3																														18:42	
22	NOVAK Kristina Sirum																																			
23	HERREM Camilla	S	2/5	40				2/4		0/1																									49:10	
24	SOLBERG-ISAKSEN Sanna Charlotte		1/2	50				1/2																											20:50	
25	REISTAD Henny Ella	S	15/17	88	5/7					4/4	1/1	5/5			2	1			1	2	1													56:05		
26	HOVDEN Emilie Margrethe																																		16:06	
33	DEILA Thale Rushfeldt		1/1	100												1																		10:58		
Team / bench																																				
UKUPNO			29/51	57	6/16	0/1	4/9	7/9	1/2	10/11	1/3		4	7	9	6	9	7	5	1	0	4	0	0												

#	Surname and name	Saves / shots								
		Tot.	%	9m	6m	Wing	7m	FB	Brk.	LD
12	SOLBERG Silje Margaretha	10/26	38	4/9	2/5	1/2	1/3		2/7	
16	LUNDE Katrine	1/13	8	1/2	0/5	0/1	0/3		0/2	
TOTAL		11/39	28	5/11	2/10	1/3	1/6	1/0	2/9	0/0

Coach: Thorir Hergeirsson

Number of attacks: 58, Efficiency: 50%, Average Duration: 32.66 seconds

#### Attack by type of defense

	Shots	9m	6m	Wing	TF	E7	E2
On def. 6-0	20/37	6/16	0/1	4/9	9	8	6
Fastbreak	1/2				0	1	0

#### Defense by type

	Total	9m	6m	Wing	Stl.	C7	2m
Def. 6-0	23/39	6/16	8/11	2/3	7	5	0
Fastbreak	0/0				0	0	4

#### Attack with superiority / minority / goalkeeper out

	Attack				Reaction		
	Att.	Eff.	Shots	TF	FB	LD	Tot.
7 on 6 (GK out)	1	100%	1/1	0	0/0	0/0	0/0
6 on 6 (GK out)	3	100%	3/3	0	0/0	0/0	0/0
6 on 6	42	43%	18/33	9			
5 on 6	1	100%	1/1	0			
6 on 5	10	60%	6/10	0			
5 on 5	1	0%	0/1	0			

Player superiority / GK out counted at the end of attack (in case it changes during attack)

#### Defense with superiority / minority / goalkeeper out

	Attack				Reaction		
	Att.	Eff.	Shots	TF	FB	LD	Tot.
7 on 6 (GK out)	5	40%	2/3	2	0/0	1/1	1/1
6 on 6 (GK out)	5	20%	1/2	3	0/0	0/2	0/2
6 on 6	40	50%	20/32	8			
6 on 5	8	63%	5/6	2			
5 on 6	1	0%	0/0	1			

Numbers show attacking numbers of opponent. Lower efficiency of opponent means better defense of this team

# Jersey number Tot. Total shooting 6m 6m (line) shooting 9m 9m shooting Wng Wing shooting FB Fastbreak sh. 7m 7m penalty sh.  
 Brk. Breakthrough sh. LD Long distance sh. As. Assists PC Pass clear chance E7 Earned 7m pen. TF Technical faults St. Steals  
 2m 2m punishments C7. Committed 7m E2 Earned 2m pun. YC. Yellow cards R/B Red/Blue cards Blk. Blocks S Starting Line-up



# 26th IHF Women's World Championship

Denmark • Norway • Sweden

Final Round, Semifinals



## Match Team Statistics

Match No. 108

## Denmark 28 - 29 Norway

(14 - 9) (9 - 14) (OT1: 5 - 6)

15.12.2023. 17:30

Attendance: 12136

Jyske Bank Boxen

Referees: Amar Konjicanin (BIH) / Dino Konjicanin (BIH)

## Shot distribution by player

### 6 M. Aardahl

	1/1	

### 7 S. Skogrand

0/2	1/1	

1 miss.

### 9 N. Mork

		1/1
0/1		2/2

1 post

### 10 S. Oftedal

		1/1
1/1	0/1	
		3/3

2 miss. 1 block

### 13 K. Brattset Dale


### 14 K. Breistol

0/1		0/1

### 15 V. Ingstad

		0/1

### 21 I. Bakkerud

		0/1
0/2		

### 22 K. Novak


### 23 C. Herrem

1/3		
	0/1	1/1

### 24 S. Solberg-Isaksen

		1/1

1 miss.

### 25 H. Reistad

	0/1	3/3
5/5		3/3
1/1	1/1	2/2

1 post

### 26 E. Hovden


### 33 T. Deila

		1/1

## TOTAL

1/3	0/1	5/6
6/9	1/2	4/6
1/4	2/3	9/9

2 post 4 miss. 1 block

## Saves distribution goalkeepers

### 12 S. Solberg

0/1	2/2	
0/1		3/4
2/6	2/3	1/8

### 16 K. Lunde

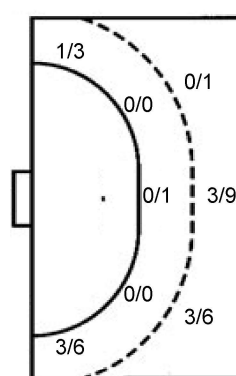
1/3		
0/6	0/1	0/3

## TOTAL

1/4	2/2	
0/1		3/4
2/12	2/4	1/11

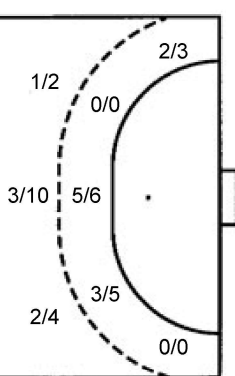
## Shots by position

### ATTACK



7m penalties 7/7  
Fastbreak 1/2  
Breakthrough 10/11  
Long dist. 1/3

### DEFENSE



7m penalties 5/6  
Fastbreak 0/0  
Breakthrough 7/9  
Long dist. 0/0

## Shooting statistics

Position	Goals	Sav.	Miss.	Post	Blk.	Total	%
Back (9m)	6	7	1	1	1	16	38
Line (6m)	0	1	0	0	0	1	0
Wing	4	3	2	0	0	9	44
7m penalties	7	1	0	1	0	9	78
Fastbreak	1	1	0	0	0	2	50
Breakthrough	10	1	0	0	0	11	91
<b>Total</b>	<b>28</b>	<b>14</b>	<b>3</b>	<b>2</b>	<b>1</b>	<b>48</b>	<b>58</b>

# Jersey number Tot. Total shooting 6m 6m (line) shooting 9m 9m shooting Wng Wing shooting FB Fastbreak sh. 7m 7m penalty sh.  
Brk. Breakthrough sh. LD Long distance sh. As. Assists PC Pass clear chance E7 Earned 7m pen. TF Technical faults St. Steals  
2m 2m punishments C7. Committed 7m E2 Earned 2m pun. YC. Yellow cards R/B Red/Blue cards Blk. Blocks S Starting Line-up

Handball statistics and livescore by Toma-soft ltd (www.toma-soft.hr)

