



26th IHF Women's World Championship

Denmark • Norway • Sweden

Final Round, Semifinals



Match Team Statistics

Match No. 107

Sweden 28 - 37 France

(11 - 19) (17 - 18)

15.12.2023. 21:00

Attendance: 8154

Jyske Bank Boxen

Referees: Tanja Kuttler (GER) / Maike Merz (GER)

Sweden

#	Surname and name	S	Goals / shots									Attack					Def.			Penalties				TP				
			Tot.	%	9m	6m	Wing	7m	FB	Brk.	LD	As.	PC	E7	E2	TF	St.	C7	Blk	YC	2m	R	B					
1	BUNDSEN Johanna	S																										35:55
3	KOPPANG Nina		1/2	50	1/2												1											5:16
4	MELLEGARD Olivia		1/2	50			0/1	1/1					1				1		1									34:43
6	STRÖMBERG Carin		1/2	50			0/1					1/1	3		1		1											8:13
7	BLOHM Linn	S	4/4	100			4/4								2		1											51:40
8	ROBERTS Jamina	S	3/8	38	0/4		1/1	1/1				1/2	3	3			3	1	1					1				34:32
10	LUNDSTRÖM Mathilda		1/2	50			0/1			1/1							1	1									33:28	
19	LAGERQUIST Anna	S																							1			22:25
21	ERIKSSON Evelina																											14:05
23	LINDQVIST Emma	S	1/2	50	0/1						1/1		1	1	1		2		1				2					32:57
24	HAGMAN Nathalie	S	5/9	56			2/5	3/4																				27:05
29	THORLEIFSDOTTIR Kristín		3/7	43	2/6						1/1			1				2	1				1					24:01
35	HVENFELT Sofia																											19:55
38	HANSSON Elin	S	2/3	67			2/3											1										24:18
42	CARLSON Jenny		4/7	57	2/5	2/2									1	1	2						1					34:03
54	AXNER Tyra		2/6	33	0/4						2/2			4	2													17:24
	Team / bench																											
	UKUPNO		28/54	52	5/22	7/8	5/11	4/5	1/1	6/7	0/0			12	8	5	2	12	4	4	0	0	5	0	0			

Goalkeepers		Saves / shots									
#	Surname and name	Tot.	%	9m	6m	Wing	7m	FB	Brk.	LD	
1	BUNDSEN Johanna	10/34	29	3/6	2/7	3/6	1/3	0/5	0/6	1/1	
21	ERIKSSON Evelina	1/9	11	0/1	1/4	0/1	0/1		0/2		
	TOTAL	11/43	26	3/7	3/11	3/7	1/4	0/5	0/8	1/1	

Coach: Tomas Axné

Number of attacks: 64, Efficiency: 44%, Average Duration: 31.75 seconds

Attack by type of defense

	Shots	9m	6m	Wing	TF	E7	E2
On def. 6-0	23/48	5/22	7/8	5/11	11	5	2
On def. 5-1	0/0	0/0	0/0	0/0	1	0	0
Fastbreak	1/1				0	0	0

Defense by type

	Total	9m	6m	Wing	Stl.	C7	2m
Def. 6-0	24/35	4/9	8/11	4/7	4	4	0
Fastbreak	6/6				0	0	5

Attack with superiority / minority / goalkeeper out

	Attack				Reaction			
	Att.	Eff.	Shots	TF	FB	LD	Tot.	
7 on 6 (GK out)	15	33%	5/12	3	0/0	2/4	2/4	
7 on 5 (GK out)	1	100%	1/1	0	0/0	0/0	0/0	
6 on 6 (GK out)	7	43%	3/6	1	2/2	1/1	3/3	
5 on 6 (GK out)	1	0%	0/1	0	0/0	0/0	0/0	
6 on 6	39	49%	19/31	8				
6 on 5	1	0%	0/1	0				

Player superiority / GK out counted at the end of attack (in case it changes during attack)

Defense with superiority / minority / goalkeeper out

	Attack				Reaction		
	Att.	Eff.	Shots	TF	FB	LD	Tot.
6 on 6 (GK out)	1	0%	0/0	1	0/0	0/0	0/0
6 on 6	54	54%	29/42	12			
6 on 5	8	88%	7/8	0			
6 on 4	1	100%	1/1	0			

Numbers show attacking numbers of opponent. Lower efficiency of opponent means better defense of this team

Jersey number Tot. Total shooting 6m 6m (line) shooting 9m 9m shooting Wng Wing shooting FB Fastbreak sh. 7m 7m penalty sh.
 Brk. Breakthrough sh. LD Long distance sh. As. Assists PC Pass clear chance E7 Earned 7m pen. TF Technical faults St. Steals
 2m 2m punishments C7. Committed 7m E2 Earned 2m pun. YC. Yellow cards R/B Red/Blue cards Blk. Blocks S Starting Line-up



26th IHF Women's World Championship

Denmark • Norway • Sweden

Final Round, Semifinals



Match Team Statistics

Match No. 107

Sweden 28 - 37 France

(11 - 19) (17 - 18)

15.12.2023. 21:00

Attendance: 8154

Jyske Bank Boxen

Referees: Tanja Kuttler (GER) / Maike Merz (GER)

Shot distribution by player

3 N. Koppang

		1/1

1 post

4 O. Mellegard

1/1	0/1	

6 C. Strömberg

0/1		

1/1 lob

7 L. Blohm

		2/2
1/1	1/1	

8 J. Roberts

	0/1	1/2
1/2		
0/1		1/1

1 miss.

10 M. Lundström

	0/1	
1/1		

19 A. Lagerquist

23 E. Lindqvist

0/1		
		1/1

24 N. Hagman

		1/2
1/1		1/2
	2/2	

1 post 0/1 lob

29 K. Thorleifsdottir

1/2		
2/2		0/2

1 post

35 S. Hvenfelt

38 E. Hansson

	1/1	
1/1		

1 post

42 J. Carlsson

0/1		1/1
1/1		0/1
1/1		1/1

1 post

54 T. Axner

		0/1
	2/2	

2 miss. 1 block

TOTAL

2/5	1/4	6/8
6/8		1/6
3/4	5/5	3/3

5 post 3 miss. 1 block 1/2 lob

Saves distribution goalkeepers

1 J. Bundsen

2/4	2/2	0/3
1/3		3/6
0/2	0/2	0/7

21 E. Eriksson

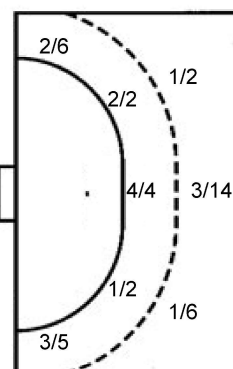
0/2		
0/1		0/1
0/1	1/2	0/1

TOTAL

2/6	2/2	0/3
1/4		3/7
0/3	1/4	0/8

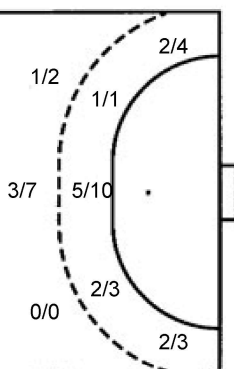
Shots by position

ATTACK



7m penalties	4/5
Fastbreak	1/1
Breakthrough	6/7
Long dist.	0/0

DEFENSE



7m penalties	3/4
Fastbreak	6/6
Breakthrough	8/8
Long dist.	4/6

Shooting statistics

Position	Goals	Sav.	Miss.	Post	Blk.	Total	%
Back (9m)	5	10	3	3	1	22	23
Line (6m)	7	1	0	0	0	8	88
Wing	5	4	0	2	0	11	45
7m penalties	4	1	0	0	0	5	80
Fastbreak	1	0	0	0	0	1	100
Breakthrough	6	1	0	0	0	7	86
Total	28	17	3	5	1	54	52

Jersey number Tot. Total shooting 6m 6m (line) shooting 9m 9m shooting Wng Wing shooting FB Fastbreak sh. 7m 7m penalty sh.
 Brk. Breakthrough sh. LD Long distance sh. As. Assists PC Pass clear chance E7 Earned 7m pen. TF Technical faults St. Steals
 2m 2m punishments C7. Committed 7m E2 Earned 2m pun. YC. Yellow cards R/B Red/Blue cards Blk. Blocks S Starting Line-up

Handball statistics and livescore by Toma-soft ltd (www.toma-soft.hr)



26th IHF Women's World Championship

Denmark • Norway • Sweden

Final Round, Semifinals



Match Team Statistics

Match No. 107

Sweden 28 - 37 France

(11 - 19) (17 - 18)

15.12.2023. 21:00

Attendance: 8154

Jyske Bank Boxen

Referees: Tanja Kuttler (GER) / Maike Merz (GER)

France

#	Surname and name	S	Goals / shots								Attack				Def.			Penalties				TP						
			Tot.	%	9m	6m	Wing	7m	FB	Brk.	LD	As.	PC	E7	E2	TF	St.	C7	Blk	YC	2m		R	B				
1	GLAUSER Laura	S													1												49:22	
2	NOCANDY Méline																										2:55	
3	TOUBLANC Alicia	S	3/6	50		1/2	1/2	0/1	1/1																		37:18	
6	VALENTINI Chloé	S	4/5	80				2/3		2/2					1		1	3	1								41:46	
8	LASSOURCE Coralie		1/3	33				0/1							1				1								18:14	
10	ZAADI DEUNA Grace	S	1/2	50	0/1										3			1		1							12:37	
20	FLIPPES Laura		3/3	100		2/2					1/1			2	2	1		1	1	1			1				29:25	
21	KANOR Orlane		2/4	50	1/3						1/1			2				2	1		1						25:35	
22	HORACEK Tamara	S	9/10	90	3/4				3/3		2/2	1/1		2	2		1	1						1			36:05	
23	LASSOURCE Déborah		0/1	0	0/1																			1			4:24	
26	FOPPA Pauletta	S	5/7	71		3/5				2/2						2	1			1	1						47:59	
27	NZE MINKO Estelle	S	4/5	80		1/2					3/3			4	2		1	2	1								40:20	
31	GRANIER Lucie		1/2	50		0/1	1/1																				21:48	
32	BOUKTIT Sarah		1/3	33		1/2						0/1															12:01	
34	GRANDVEAU Léna		3/3	100							1/1	2/2				1		1		1							30:06	
99	SAKO Hatadou																										10:02	
	Team / bench																											
	UKUPNO		37/54	69	4/9	8/14	4/7	3/4	6/6	8/8	4/6			14	8	4	4	13	7	5	1	1	2	0	0			

#	Surname and name	Saves / shots								
		Tot.	%	9m	6m	Wing	7m	FB	Brk.	LD
1	GLAUSER Laura	12/33	36	8/13	0/5	2/5	1/3	0/1	1/6	
99	SAKO Hatadou	5/12	42	2/2	1/3	2/4	0/2		0/1	
	TOTAL	17/45	38	10/15	1/8	4/9	1/5	0/1	1/7	0/0

Coach: Olivier Krumbholz

Number of attacks: 64, Efficiency: 58%, Average Duration: 24.08 seconds

Attack by type of defense

	Shots	9m	6m	Wing	TF	E7	E2
On def. 6-0	24/35	4/9	8/11	4/7	13	4	4
Fastbreak	6/6				0	0	0

Defense by type

	Total	9m	6m	Wing	Stl.	C7	2m
Def. 6-0	23/48	5/22	7/8	5/11	6	5	0
Def. 5-1	0/0	0/0	0/0	0/0	1	0	0
Fastbreak	1/1				0	0	2

Attack with superiority / minority / goalkeeper out

	Attack				Reaction		
	Att.	Eff.	Shots	TF	FB	LD	Tot.
6 on 6 (GK out)	1	0%	0/0	1	0/0	0/0	0/0
6 on 6	54	54%	29/42	12			
6 on 5	8	88%	7/8	0			
6 on 4	1	100%	1/1	0			

Player superiority / GK out counted at the end of attack (in case it changes during attack)

Defense with superiority / minority / goalkeeper out

	Attack				Reaction		
	Att.	Eff.	Shots	TF	FB	LD	Tot.
7 on 6 (GK out)	15	33%	5/12	3	0/0	2/4	2/4
7 on 5 (GK out)	1	100%	1/1	0	0/0	0/0	0/0
6 on 6 (GK out)	7	43%	3/6	1	2/2	1/1	3/3
5 on 6 (GK out)	1	0%	0/1	0	0/0	0/0	0/0
6 on 6	39	49%	19/31	8			
6 on 5	1	0%	0/1	0			

Numbers show attacking numbers of opponent. Lower efficiency of opponent means better defense of this team

Jersey number Tot. Total shooting 6m 6m (line) shooting 9m 9m shooting Wng Wing shooting FB Fastbreak sh. 7m 7m penalty sh.
 Brk. Breakthrough sh. LD Long distance sh. As. Assists PC Pass clear chance E7 Earned 7m pen. TF Technical faults St. Steals
 2m 2m punishments C7. Committed 7m E2 Earned 2m pun. YC. Yellow cards R/B Red/Blue cards Blk. Blocks S Starting Line-up



26th IHF Women's World Championship

Denmark • Norway • Sweden

Final Round, Semifinals



Match Team Statistics

Match No. 107

Sweden 28 - 37 France

(11 - 19) (17 - 18)

15.12.2023. 21:00

Attendance: 8154

Jyske Bank Boxen

Referees: Tanja Kuttler (GER) / Maike Merz (GER)

Shot distribution by player

2 M. Nocandy

3 A. Toublanc

		0/1
		1/1

2/4 lob

6 C. Valentini

		0/1
	1/1	2/2

1/1 lob

8 C. Lassource

0/1		
		1/1

1 post

10 G. Zaadi Deuna

		1/1

1 miss.

20 L. Flippes

1/1		
1/1		1/1

21 O. Kanor

1/2		
	1/1	

1 post

22 T. Horacek

1/1		2/2
1/1		2/3
1/1	1/1	1/1

23 D. Lassource

	0/1	

26 P. Foppa

		2/2
	1/2	1/1

1 post 1/1 lob

27 E. Nze Minko

1/2		1/1
2/2		

31 L. Granier

	1/1	

1 miss.

32 S. Bouktif

	0/1	
1/1		

1 miss.

34 L. Grandveau

1/1		2/2

TOTAL

4/6	0/2	4/4
3/4		4/7
4/4	5/6	9/9

3 post 3 miss. 4/6 lob

Saves distribution goalkeepers

1 L. Glauser

2/4	2/2	2/6
1/5		4/5
1/4	0/4	0/3

99 H. Sako

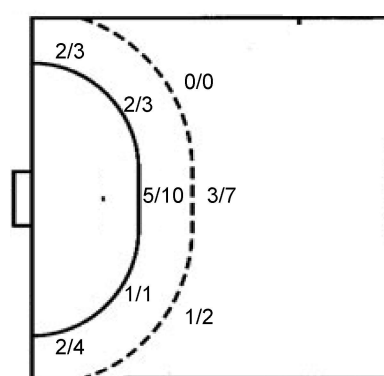
1/1	1/2	0/2
1/3		1/1
	0/1	

TOTAL

3/5	3/4	2/8
2/8		5/6
1/4	0/5	0/3

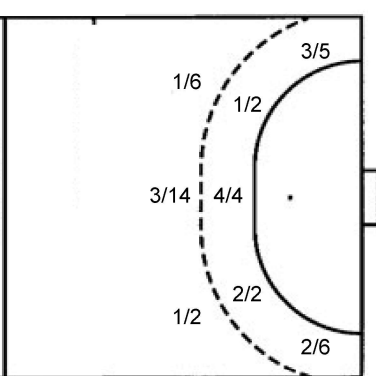
Shots by position

ATTACK



7m penalties 3/4
Fastbreak 6/6
Breakthrough 8/8
Long dist. 4/6

DEFENSE



7m penalties 4/5
Fastbreak 1/1
Breakthrough 6/7
Long dist. 0/0

Shooting statistics

Position	Goals	Sav.	Miss.	Post	Blk.	Total	%
Back (9m)	4	3	1	1	0	9	44
Line (6m)	8	3	2	1	0	14	57
Wing	4	3	0	0	0	7	57
7m penalties	3	1	0	0	0	4	75
Fastbreak	6	0	0	0	0	6	100
Breakthrough	8	0	0	0	0	8	100
Total	33	10	3	2	0	48	69

Jersey number Tot. Total shooting 6m 6m (line) shooting 9m 9m shooting Wng Wing shooting FB Fastbreak sh. 7m 7m penalty sh.
Brk. Breakthrough sh. LD Long distance sh. As. Assists PC Pass clear chance E7 Earned 7m pen. TF Technical faults St. Steals
2m 2m punishments C7. Committed 7m E2 Earned 2m pun. YC. Yellow cards R/B Red/Blue cards Blk. Blocks S Starting Line-up

Handball statistics and livescore by Toma-soft ltd (www.toma-soft.hr)



26th IHF Women's World Championship

Denmark • Norway • Sweden

Final Round, Semifinals



Match Team Statistics

Match No. 107

Sweden 28 - 37 France

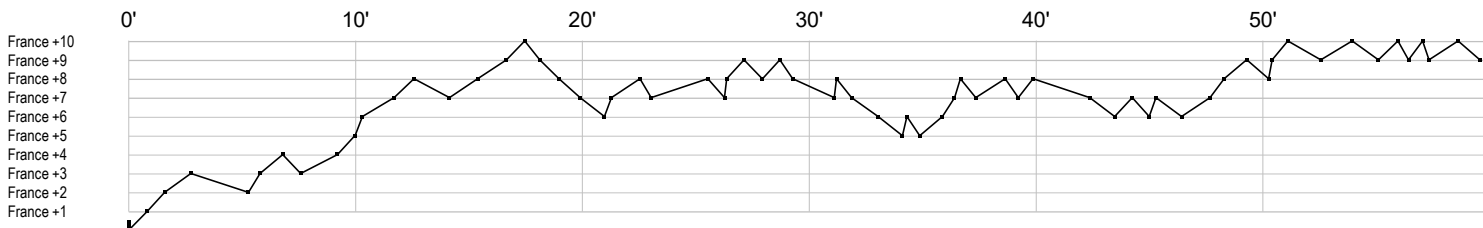
(11 - 19) (17 - 18)

15.12.2023. 21:00

Attendance: 8154

Jyske Bank Boxen

Referees: Tanja Kuttler (GER) / Maike Merz (GER)



Sweden

1 Bundsen J	r r r r r ss r r r r	r	r	s r s r s r r r sr r	s r r	r r r s	r s s
3 Koppang N	gb f						
4 Mellegard O		f	t	a	g	c	
6 Strömberg C					ae		g a a f t
7 Blohm L	e	g	e g g g	g			t
8 Roberts J	f f p f f p		g a	f	b g c t	t	t2 g p a a
10 Lundström M		g	bt				f
19 Lagerquist A				2			
21 Eriksson E		r	r r sr r r	r		r	
23 Lindqvist E	f	tt	c2		2		e a g p
24 Hagman N	g	f	g		g		f g g f f
29 Thorleifsdottir					ff	g t g b	t 2 gf p f
35 Hvenfelt S							
38 Hansson E		f t					g g
42 Carlson J	f	c	f		g ge g	f	i pg i
54 Axné T		a f p f p a a	f g fg a				

France

1 Glauser L	ss s s	r s	s r s s	r r r r r sa r r	r t sr r r r s r	r s	r r r r r	r
2 Nocandy M				t				
3 Toubanc A	g	ff	g		c g		f b	
6 Valentini C	p	g	g t		t f		t bgi g	
8 Lassource C				g	f			p bf
10 Zaadi Deuna	a	f c	a	t a	g			
20 Flippes L	a	y g t	bg	p g		e a	pc	
21 Kanor O			g t	f t a x		f b	g	a
22 Horacek T	g	g p a	g		g g	gt2	ig a g f pg	
23 Lassource D								f 2
26 Foppa P	g f	e	ie	f g		g bg c	g	
27 Nze Minko E		ga a b	g		gi p g f t p a		a t	
31 Granier L				g				f
32 Bouktit S								g f f
34 Grandveau L			t c				e	g g g
99 Sako H	r			r				s s r s sr r sr r

In game	g Goal scored	f Missed shot	a Assist	t Technical faults	b Steal
2 2min suspension	e Earned 7m	c Committed 7m	y Yellow card	r Red Card	k Blue card
i Earned 2min.	x Block	4 4min suspension	p Pass for clear chance	s Saved shot	r Received goal